

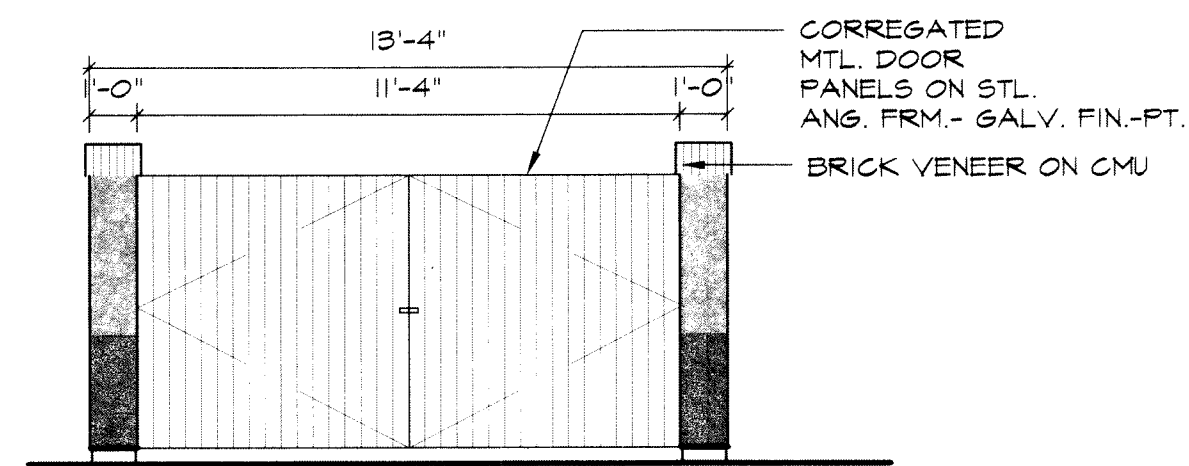
# FLETCHER ELEMENTARY SCHOOL

## SITE DEVELOPMENT PLAN

10455 E. 25TH AVE.

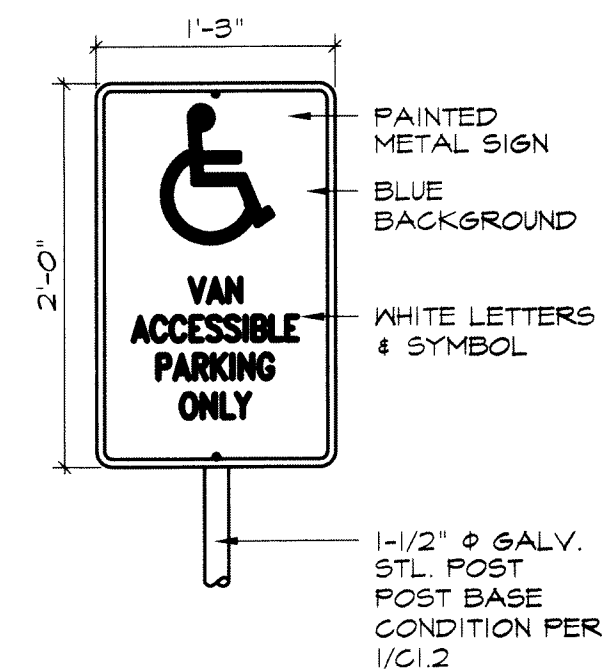
### FLETCHER ELEMENTARY SUBDIVISION FILING NO. 1 & 2

### CITY OF AURORA, COUNTY OF ADAMS, STATE OF COLORADO



**Trash Enclosure**

Scale: 1/4" = 1'-0"  
XREF

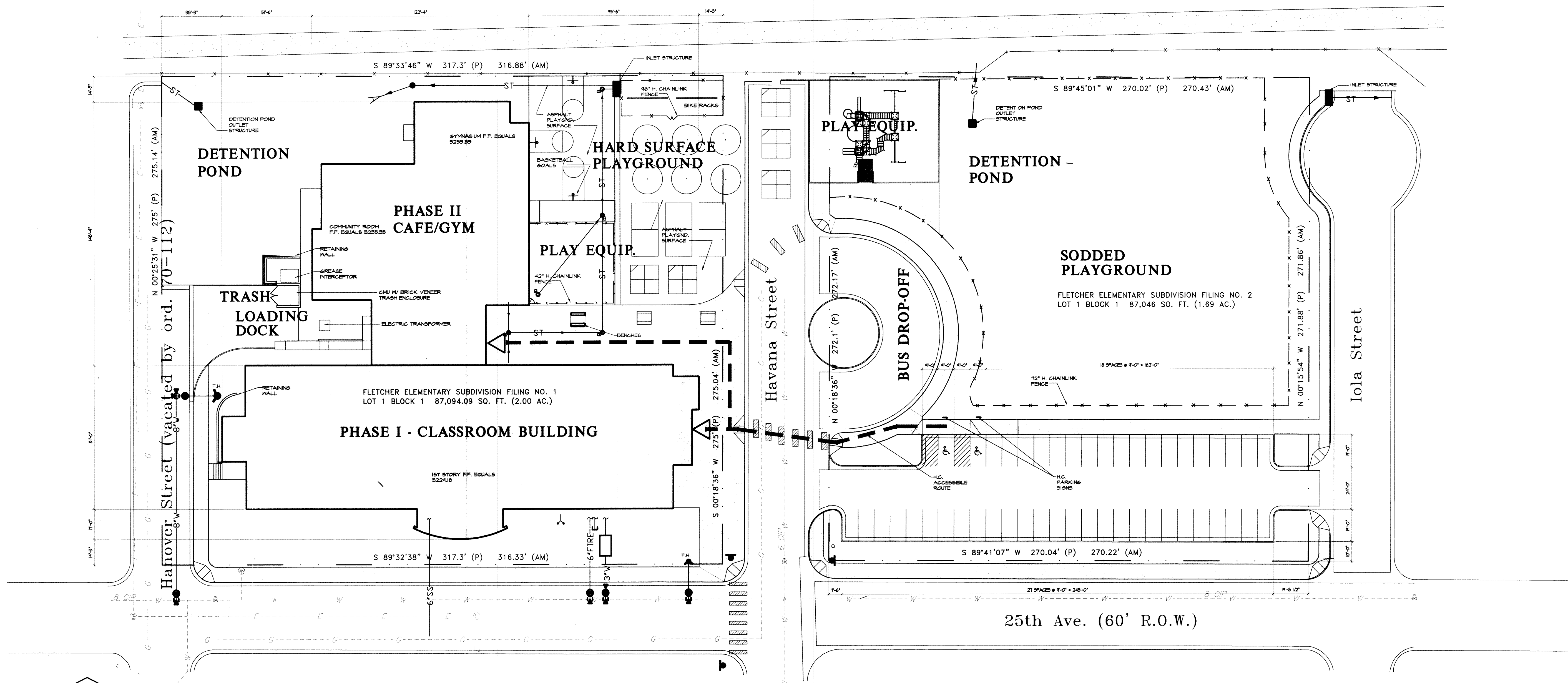


**H.C. SIGN**

Scale: 1" = 1'-0"  
XREF

#### Site Data

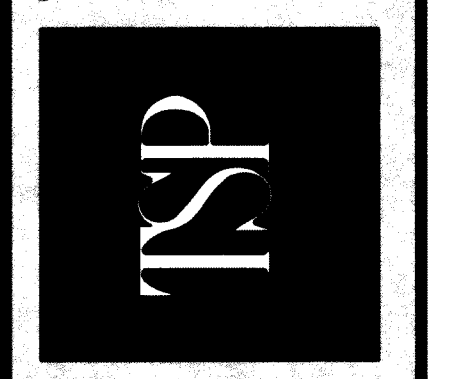
ITEM	SQUARE FOOTAGE	% OF GROSS SITE
GROSS SITE AREA	174,140.09	100.0
* BUILDING FOOTPRINT	35,167	20.0
* PARKING/DRIVES	23,433	13.5
HARDSCAPE TOTAL	58,600	33.5
* LANDSCAPE/RECREATION AREA (INCLUDES SIDEWALKS & HARDSCAPE PLAYGROUND)	115,540.09	66.5
ITEM	DESCRIPTION	
BUILDING SIZE 3 LEVELS	75,315 S.F. TOTAL BASEMENT 21,413 S.F. FIRST STORY 20,074 S.F. SECOND STORY	
PARKING REQUIRED 40 STAFF	40 SPACES	
PROVIDED	45 SPACES	



**Site Plan**

Scale: 1"=30'-0"  
XREF

**TSP Five, Inc.**  
A Professional Design Group  
8751 E. Hampden Ave. Suite A-1  
Denver, Colorado 80231  
(303) 695-1997 Fax: (303) 695-1938  
503 Remington, Suite 5  
Ft. Collins, Colorado 80524  
(970) 493-1772 Fax: (970) 493-1820



**Fletcher Elementary School**  
Aurora, Colorado  
**Site Plan**

File Name: Fletcher Elem  
Project No.: 05000000  
Drawn By: DW  
Checked By:  
Date: 1/23/01  
Copyright © 2000



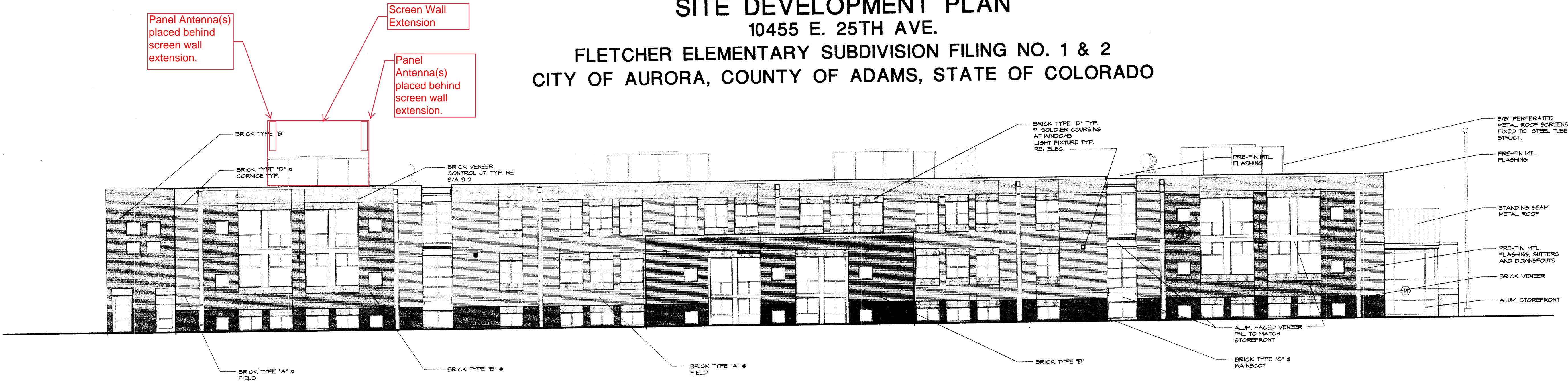
# FLETCHER ELEMENTARY SCHOOL

## SITE DEVELOPMENT PLAN

10455 E. 25TH AVE.

### FLETCHER ELEMENTARY SUBDIVISION FILING NO. 1 & 2

### CITY OF AURORA, COUNTY OF ADAMS, STATE OF COLORADO



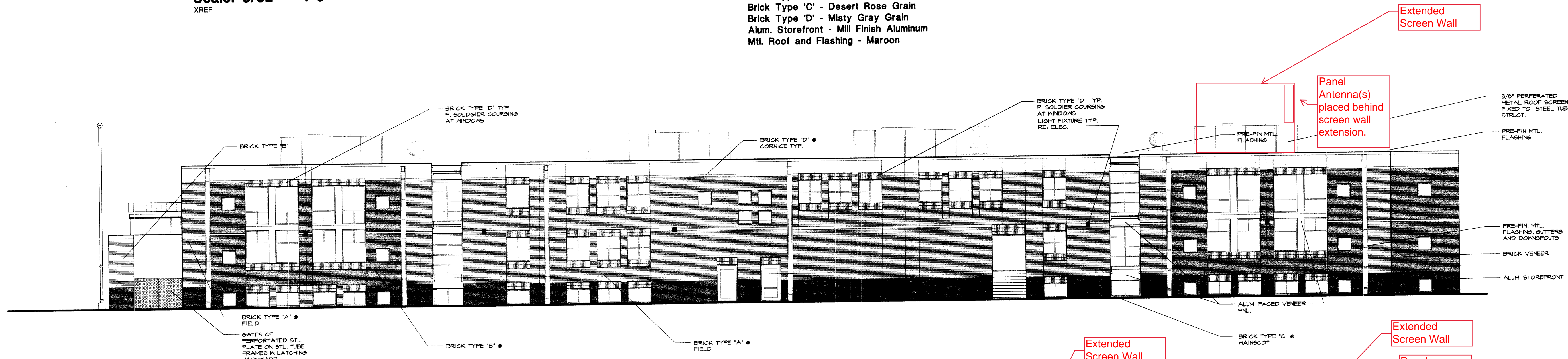
**Phase One - South Elevation**

Scale: 3/32" = 1'-0"

XREF

#### Building Colors:

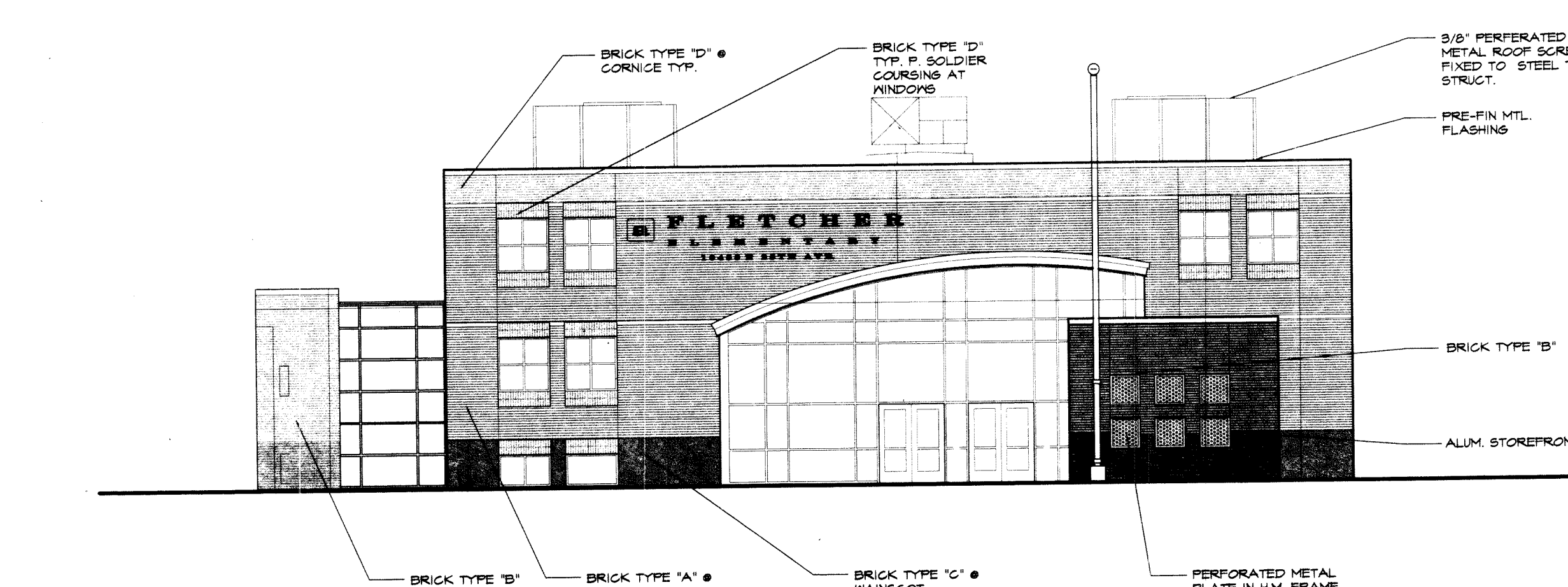
- Brick Type 'A' - Medium Buff Grain
- Brick Type 'B' - Dark Buff Grain
- Brick Type 'C' - Desert Rose Grain
- Brick Type 'D' - Misty Gray Grain
- Alum. Storefront - Mill Finish Aluminum
- Mtl. Roof and Flashing - Maroon



**Phase One - North Elevation**

Scale: 3/32" = 1'-0"

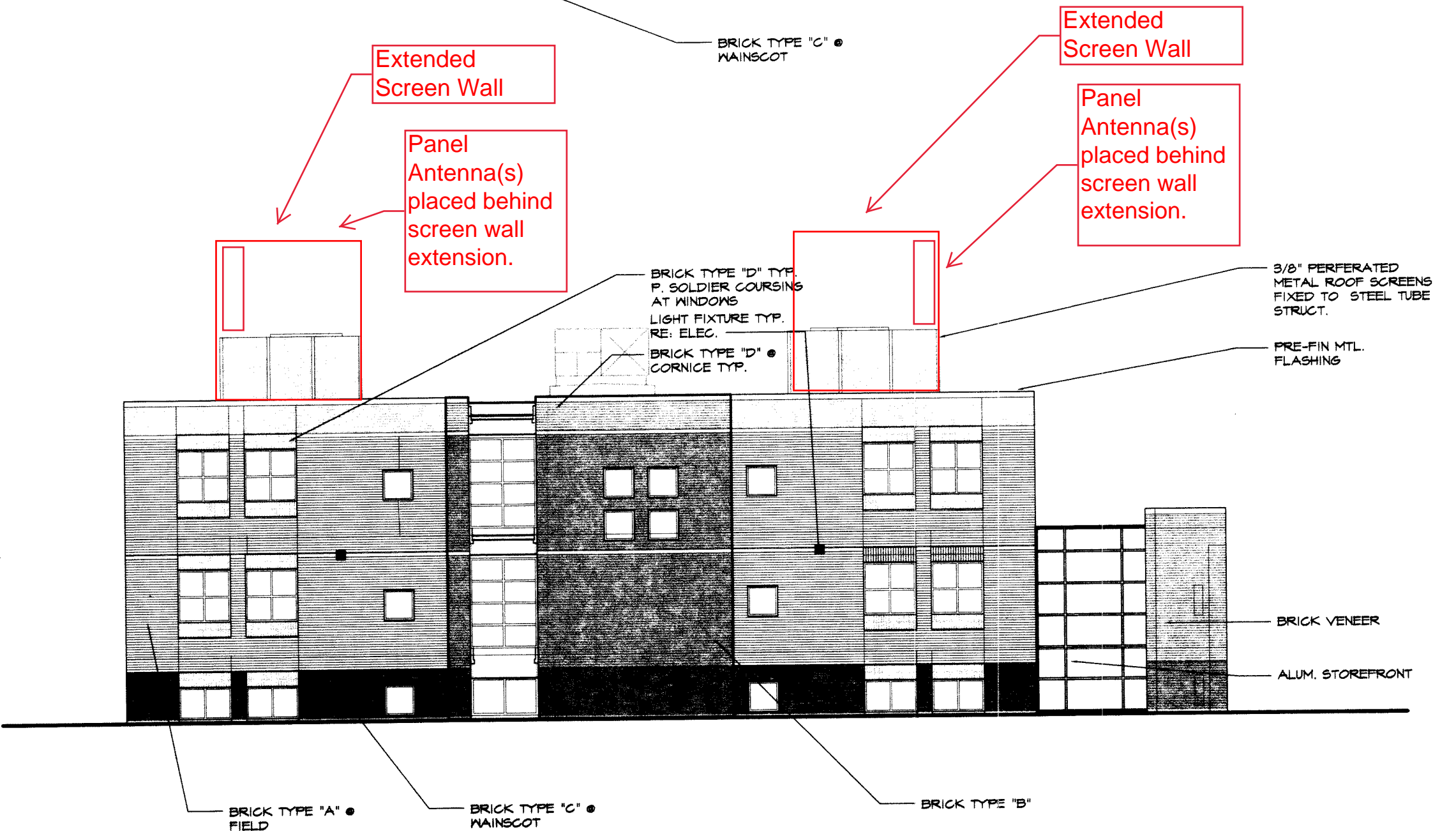
XREF



**Phase One - East Elevation**

Scale: 3/32" = 1'-0"

XREF



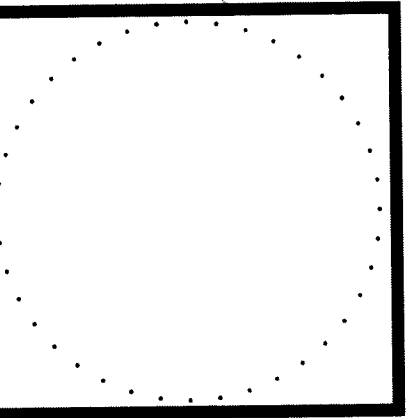
**Phase One - West Elevation**

Scale: 3/32" = 1'-0"

XREF

FLETCHER ELEMENTARY SCHOOL 2000-6067-1

REVISIONS	NO.	DATE	DESCRIPTION



**TSP Five, Inc.** - A Professional Design Group  
 8751 E. Hampden Ave. Suite A-1  
 Denver, Colorado 80231  
 (303) 695-1897 Fax: (303) 695-1968  
 503 Remington, Suite 5  
 Ft. Collins, Colorado 80524  
 (970) 493-1772 Fax: (970) 493-1820

**TSP**

**Fletcher Elementary School**  
 Aurora, Colorado

**Phase One Elevations**

File Name: Fletcher Elem  
 Project No.: 05000000  
 Drawn By: DW  
 Checked By: \_\_\_\_\_  
 Date: 1/23/01  
 Copyright © 2000



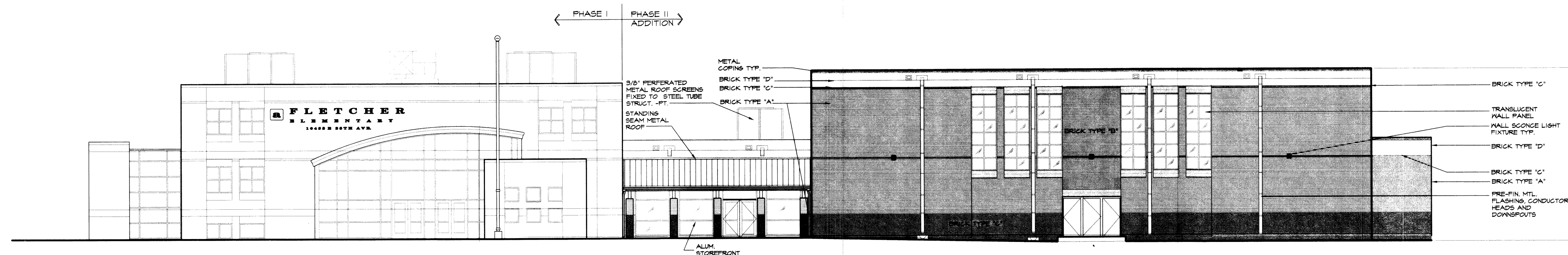
# FLETCHER ELEMENTARY SCHOOL

## SITE DEVELOPMENT PLAN

10455 E. 25TH AVE.

### FLETCHER ELEMENTARY SUBDIVISION FILING NO. 1 & 2

### CITY OF AURORA, COUNTY OF ADAMS, STATE OF COLORADO



**Phase Two- East Elevation**

Scale: 3/32" = 1'-0"

XREF

#### Building Colors:

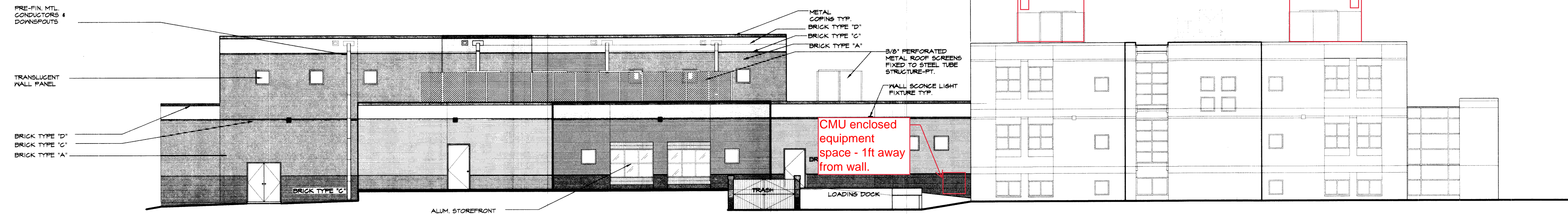
Brick Type 'A' - Medium Buff Grain  
Brick Type 'B' - Dark Buff Grain  
Brick Type 'C' - Desert Rose Grain  
Brick Type 'D' - Misty Gray Grain  
Alum. Storefront - Mill Finish Aluminum  
Mtl. Roof and Flashing - Maroon

Panel Antenna(s) placed behind screen wall extension.

Extended Screen Wall

Extended Screen Wall

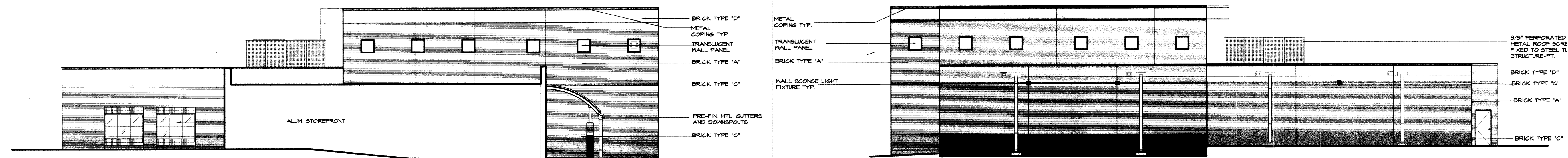
Panel Antenna(s) placed behind screen wall extension.



**Phase Two - West Elevation**

Scale: 3/32" = 1'-0"

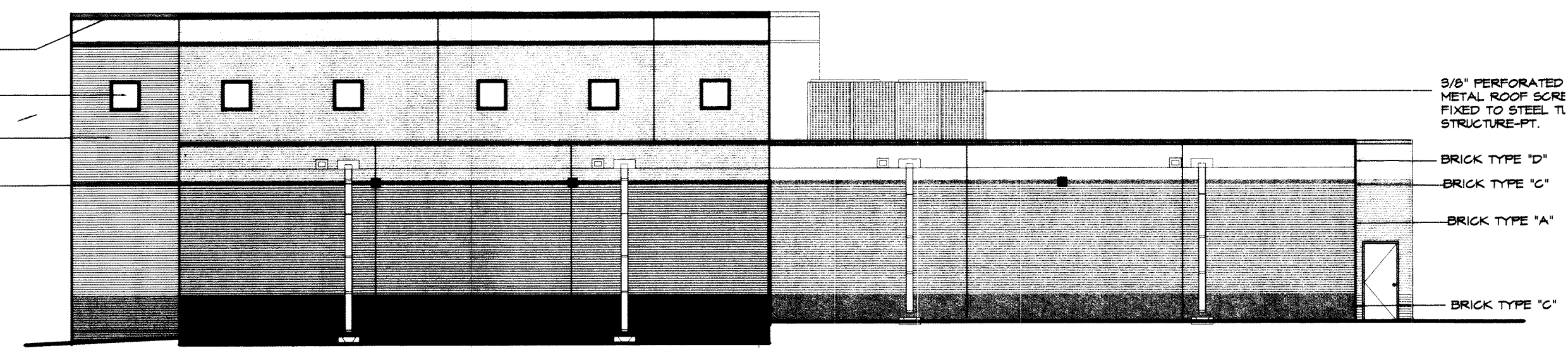
XREF



**Phase Two - South Elevation**

Scale: 3/32" = 1'-0"

XREF

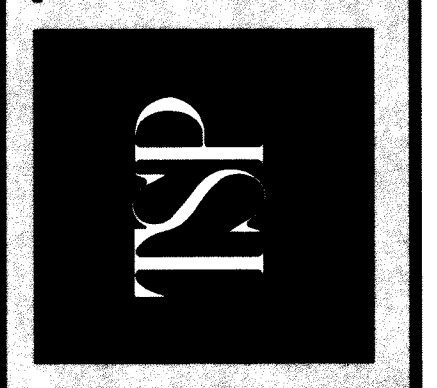


**Phase Two - North Elevation**

Scale: 3/32" = 1'-0"

XREF

TSP Five, Inc. A Professional Design Group  
8751 E. Hampden Ave. Suite A-1  
Denver, Colorado 80231  
(303) 695-1997 Fax: (303) 695-1938  
503 Remington, Suite 5  
Ft. Collins, Colorado 80524  
(970) 493-1772 Fax: (970) 493-1820

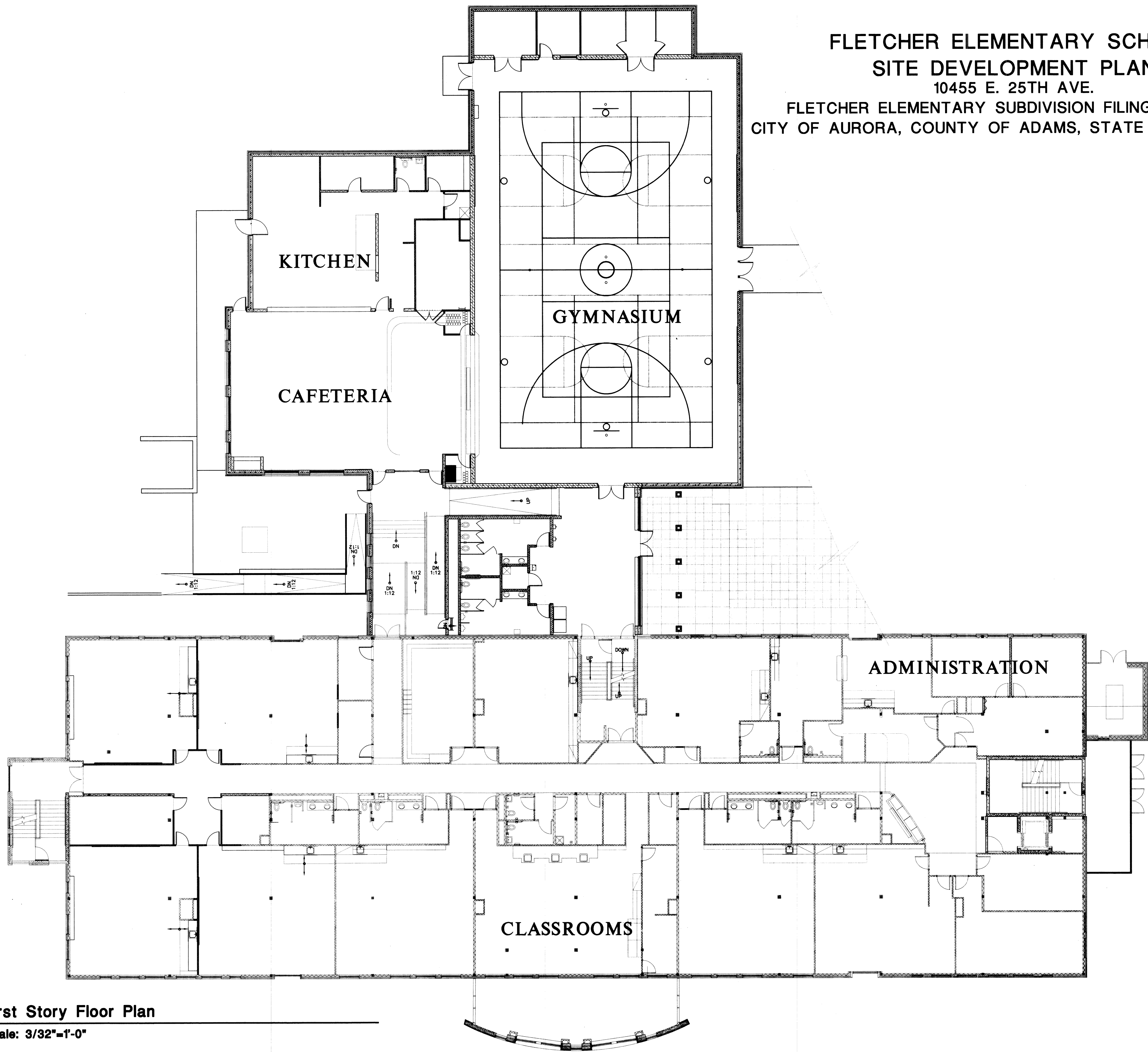


Fletcher Elementary School  
Aurora, Colorado  
Phase Two Elevations

File Name Fletcher Elem  
Project No. 0500000  
Drawn By DM  
Checked By  
Date 1/23/01  
Copyright © 2001



FLETCHER ELEMENTARY SCHOOL  
SITE DEVELOPMENT PLAN  
10455 E. 25TH AVE.  
FLETCHER ELEMENTARY SUBDIVISION FILING NO. 1 & 2  
CITY OF AURORA, COUNTY OF ADAMS, STATE OF COLORADO



First Story Floor Plan

Scale: 3/32"=1'-0"  
XREF

REVISIONS

NO.	DATE	DESCRIPTION

**TSP Five, Inc.**  
A Professional Design Group  
8731 E. Hampden Ave. Suite A-1  
Denver, Colorado 80231  
(303) 695-1997 Fax: (303) 695-1938  
903 Remington, Suite 5  
Ft. Collins, Colorado 80524  
(970) 493-1772 Fax: (970) 493-1820



Fletcher Elementary School

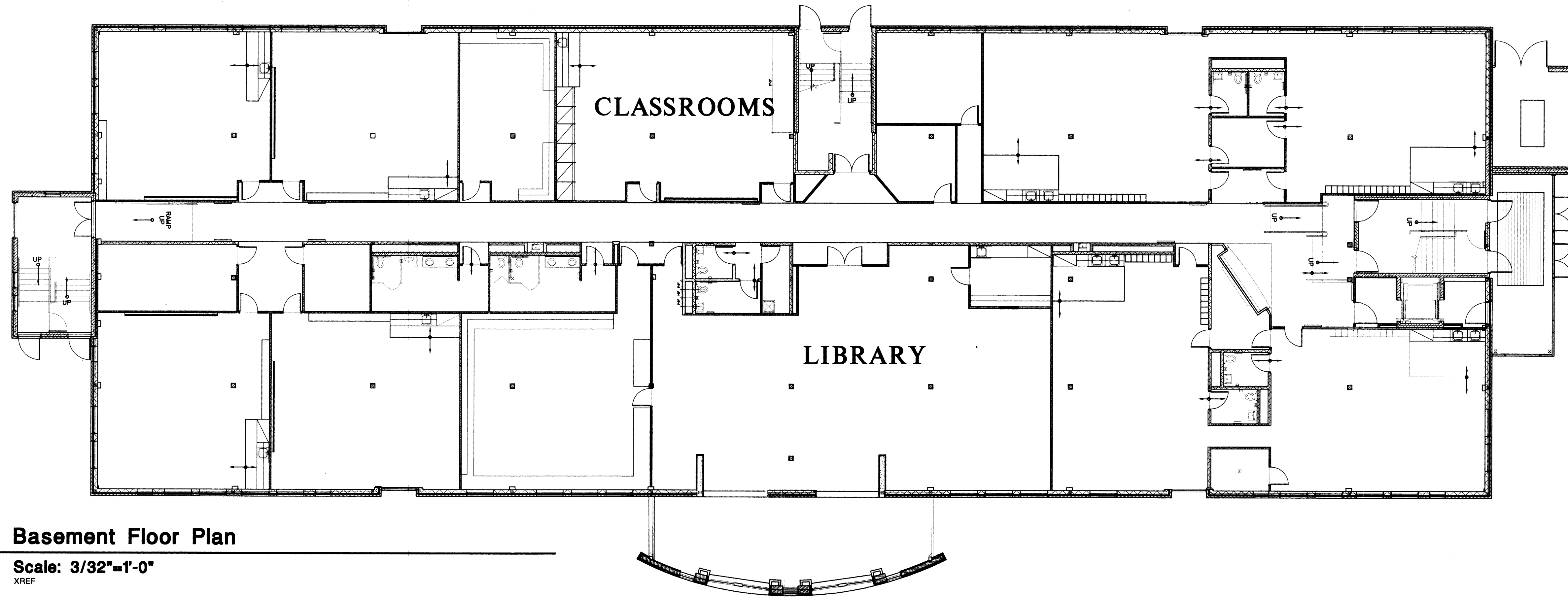
Aurora, Colorado

First Story Floor Plan

File Name: Fletcher Elem  
Project No.: 05000000  
Drawn By: DM  
Checked By: \_\_\_\_\_  
Date: 1/23/01  
Copyright © 2001

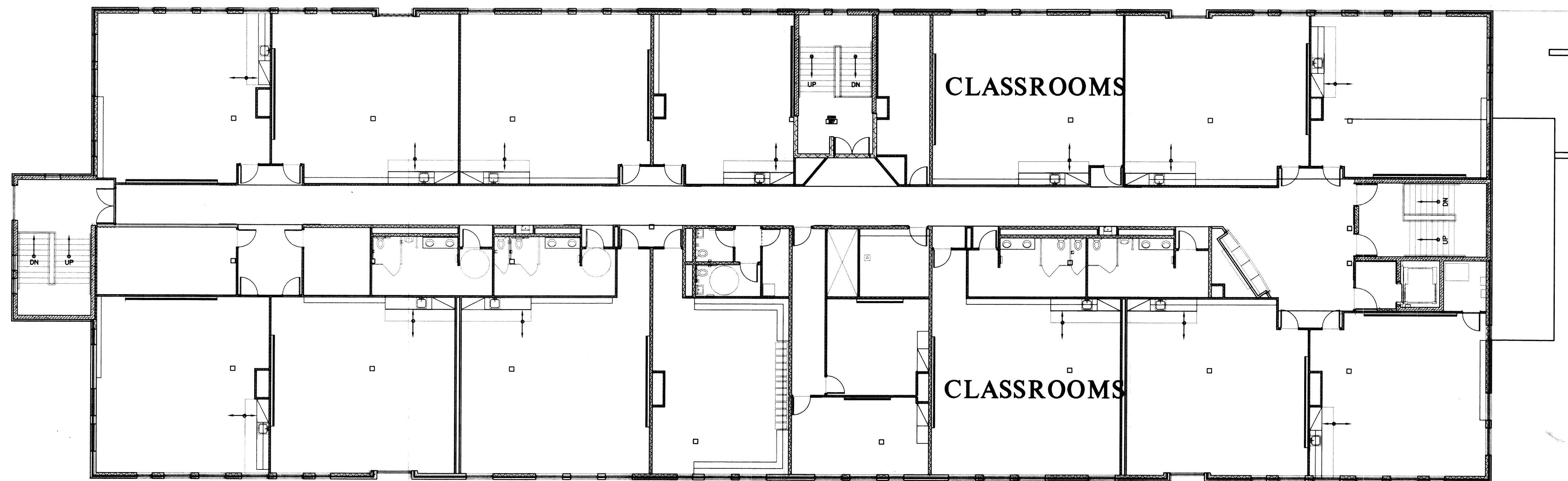
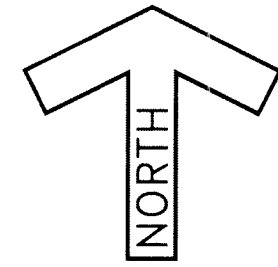


**FLETCHER ELEMENTARY SCHOOL  
SITE DEVELOPMENT PLAN  
10455 E. 25TH AVE.  
FLETCHER ELEMENTARY SUBDIVISION FILING NO. 1 & 2  
CITY OF AURORA, COUNTY OF ADAMS, STATE OF COLORADO**



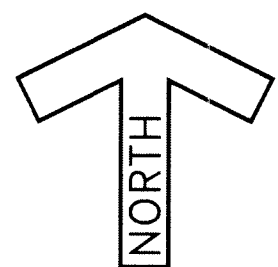
### Basement Floor Plan

**Scale: 3/32"=1'-0"**  
XREF

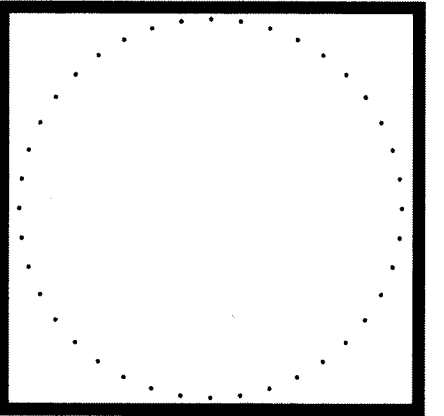


## Second Story Floor Plan

**Scale: 3/32"=1'-0"**  
XREF

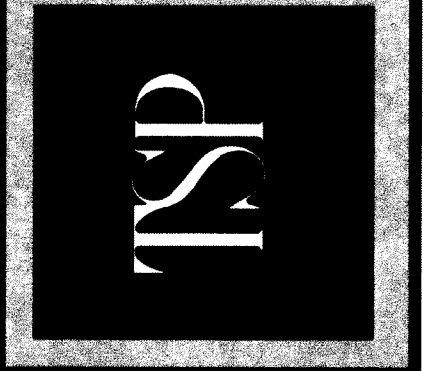


REVISIONS		
NO.	DATE	DESCRIPTION



**TSP Five, Inc.** • A Professional Design Group  
8751 E. Hampden Ave. Suite A-1  
Denver, Colorado 80231  
(303) 695-1987 • Fax: (303) 695-1938

503 Remington, Suite 5  
Ft. Collins, Colorado 80524  
(970) 493-1772 • Fax: (970) 493-1820



Fletcher Elementary School  
Aurora, Colorado  
Basement and Second Story  
Floor Plans

File Name Fletcher Elem  
Project No. 0500000  
Drawn By DM  
Checked By \_\_\_\_\_  
Date 1/23/01  
Copyright © 2001



