

DESIGN POINT SUMMARY			
DESIGN POINT	CONTRIBUTING BASINS	FLOW (CFS)	
		Q2	Q100
1	POND A, B, C RELEASE	—	4.10
2	A1, A2, A3, A4, A5, A6, A7, A8, A9	6.33	19.13
3	A1, A2, A3, A4, A5, A6, A7	3.14	10.02
4	A1, A2, A3, A4, A5, A6	2.94	9.38
5	A1, A2, A3, A4, A5	2.68	8.44
6	A1, A2	1.49	4.58
7	A1	0.59	1.71
8	A4, A5	0.88	2.87
9	A4	0.78	2.51
10	A8	2.83	8.17
11	B1	0.76	2.24
12	C1, C2, C3	6.37	18.78
13	C1, C2	4.87	14.44
14	C3	1.52	4.41
15	D	0.23	0.67
16	E	0.10	0.35
17	F	0.14	0.46

BASIN SUMMARY						
BASIN	AREA (AC)	C2	C100	Q2	Q100	I%
A1	0.27	0.67	0.73	0.59	1.71	75%
A2	0.54	0.58	0.66	1.01	3.13	65%
A3	0.20	0.71	0.76	0.47	1.36	79%
A4	0.44	0.54	0.65	0.78	2.51	58%
A5	0.20	0.17	0.22	0.11	0.38	5%
A6	0.25	0.36	0.48	0.29	1.03	36%
A7	0.12	0.70	0.76	0.27	0.80	77%
A8	1.24	0.78	0.84	2.83	8.17	88%
A9	0.30	0.47	0.55	0.45	1.42	47%
B1	0.38	0.63	0.68	0.76	2.24	67%
C1	0.55	0.80	0.90	1.44	4.35	90%
C2	1.42	0.74	0.81	3.44	10.09	82%
C3	0.62	0.76	0.82	1.52	4.41	85%
D	0.13	0.52	0.57	0.23	0.67	52%
E	0.20	0.15	0.20	0.10	0.35	2%
F	0.17	0.25	0.30	0.14	0.46	15%

AUMHC SAFETY NET CAMPUS MASTER DRAINAGE MAP

NOTES:

1. BASIS OF BEARINGS: THE EAST PROPERTY LINE OF THE SUBJECT PROPERTY BEARING S13°29'37"E AS NOTED ON PLANS.
2. BENCHMARK: COA ID 4S6713SE002. OLD BENCHMARK ID M-027.5 3" BRASS CAP ATOP THE NORTH SIDE INLET AT THE NW CORNER OF MISSISSIPPI AVE AND POTOMAC STREET NAVD88 DATUM=5578.57'
3. CITY OF AURORA PLAN REVIEW IS ONLY FOR GENERAL CONFORMANCE WITH CITY OF AURORA DESIGN CRITERIA AND THE CITY CODE. THE CITY IS NOT RESPONSIBLE FOR THE ACCURACY AND ADEQUACY OF THE DESIGN, OR DIMENSIONS AND ELEVATIONS WHICH SHALL BE CONFIRMED AND CORRELATED AT THE JOB SITE. THE CITY OF AURORA, THROUGH THE APPROVAL OF THIS DOCUMENT, ASSUMES NO RESPONSIBILITY FOR THE COMPLETENESS AND/OR ACCURACY OF THIS DOCUMENT.
4. ALL ON-SITE STORM SEWER, SWALES, WATER QUALITY AND STORMWATER DETENTION FACILITIES ARE PRIVATE UNLESS SPECIFICALLY NOTED TO BE PUBLIC, AND ARE DESIGNED FOR THE 100-YEAR STORM EVENT.
5. THE DEVELOPER SHALL HAVE A LICENSE PROFESSIONAL ENGINEER CERTIFY EACH STORMWATER DETENTION POND AND/OR WATER QUALITY BMP IS BUILT ACCORDING TO THE APPROVED PLANS AND SPECIFICATIONS AND THE REQUIRED DETENTION VOLUME, INCLUDING THE WQCV WHEN USED, IS MET. THE CERTIFICATION SHALL ALSO VERIFY ALL PERTINENT DIMENSIONS, ELEVATIONS, REQUIRED OUTLET ORIFICE PLATES FOR DETENTION AND WQCV AND OTHER PERMANENT BMPS REQUIREMENTS ARE INSTALLED PER THE APPROVED PLANS AND SPECIFICATIONS, AND SHALL SHOW THE AS-BUILT DESIGN VOLUMES (WQCV, 10-YEAR, 100-YEAR, EURV) AND OTHER PERTINENT DIMENSIONS, ELEVATIONS AND CAPACITY REQUIREMENTS ASSOCIATED WITH THE WQ BMP USED. THE CERTIFICATION SHALL BE PROVIDED TO THE CITY OF AURORA ENGINEERING CONTROL SECTION PRINCIPAL ENGINEER, AN APPROVED POND CERTIFICATE SHALL BE REQUIRED PRIOR TO THE RETURN OF ANY FISCAL SECURITY DEPOSIT (AS WELL AS SATISFYING OTHER CONDITIONS OF THE STORMWATER PERMIT) FOR SITES THAT DO NOT REQUIRE A CERTIFICATE OF OCCUPANCY. EXAMPLES OF THESE SITES INCLUDE BUT ARE NOT LIMITED TO: SITES WITHOUT VERTICAL CONSTRUCTION, OIL AND GAS WELL PADS, OUTDOOR STORAGE, AND TOW YARDS. AN APPROVED POND CERTIFICATE SHALL BE REQUIRED PRIOR TO COMMENCEMENT OF BUSINESS OPERATIONS. IN NO CASE SHALL A CERTIFICATE OF OCCUPANCY OR TEMPORARY CERTIFICATE OF OCCUPANCY BE ISSUED WITHOUT AN APPROVED POND CERTIFICATE.
6. GRADE LANDSCAPE AREAS 10' AWAY FROM BUILDING AT GREATER OF THE FOLLOWING: MIN 5.0% PER CITY OF AURORA STANDARDS OR GEOTECHNICAL REPORT RECOMMENDATIONS. GRADE IMPERVIOUS AREAS AWAY FROM BUILDING AT MIN 2.0%

LEGEND

EXISTING		PROPOSED
=====	PROPERTY LINE	=====
=====	EASEMENT	=====
=====	CURB & GUTTER	=====
=====	6" VERTICAL TYPE I (CATCH) CURB & GUTTER	=====
=====	6" VERTICAL TYPE II (CATCH) CURB & GUTTER	=====
=====	HANDICAP RAMPS	=====
=====	RITTERINGS/ MAINTENANCE RAMP	=====
=====	DESCRIPTIONS	=====
=====	INDEX CONTOURS	=====
=====	INTERMEDIATE CONTOURS	=====

BASIN LEGEND

BASIN BOUNDARY	=====
DIRECTION OF FLOW	=====
DESIGN POINT	=====
EMERGENCY OVERFLOW	=====
BASIN	=====
AREA IN ACRES	=====

FACILITY DATA:

NOTE: ALL DETENTION AND WATER QUALITY FACILITIES ARE PRIVATE.

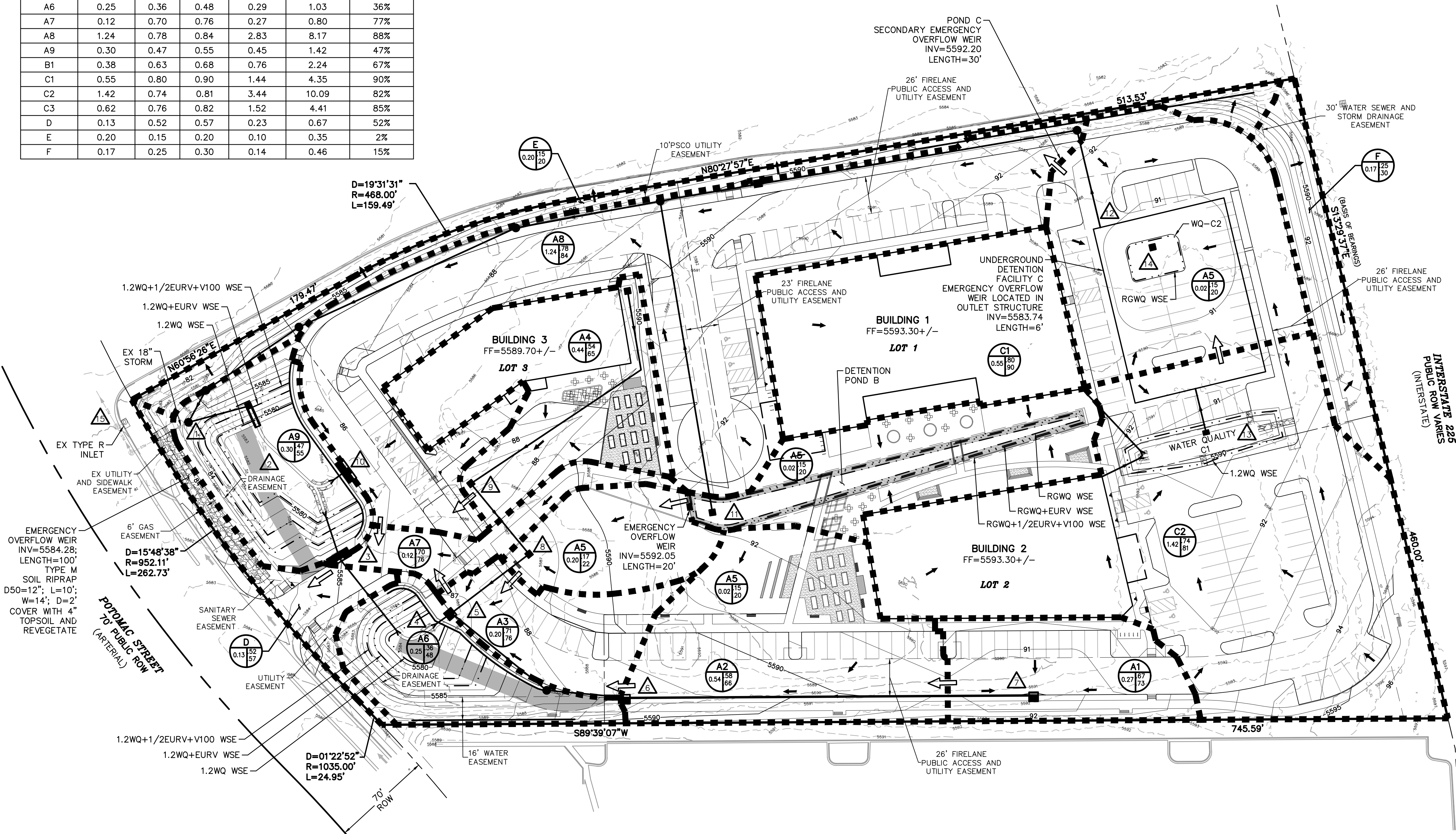
DETENTION POND A:
1.2*WQCV=0.11 AC-FT
EURV+1.2*WQCV=0.45 AC-FT
V100+1/2EURV+1.2*WQCV=0.75 AC-FT
YWQ= 5579.75
YEVRV= 5581.96
Y100=5583.28
Q100=2.23 CFS
MAX DEPTH=5.7'

DETENTION POND B:
RAIN GARDEN WQCV=0.01 AC-FT
EURV+RAIN GARDEN WQCV=0.06 AC-FT
V100+1/2EURV+RAIN GARDEN WQCV=0.09 AC-FT
YWQ= 5590.70
YEVRV= 5591.32
Y100=5591.74
Q100=0.24 CFS
MAX DEPTH=1.2'

WATER QUALITY C1:
1.2*WQCV=0.08 AC-FT
YWQ= 5590.40
MAX DEPTH=3.1'

WATER QUALITY C2:
RAIN GARDEN WQCV=0.02 AC-FT
YWQ= 5590.00
MAX DEPTH=1.0'

DETENTION POND C:
EURV=0.33 AC-FT
V100+1/2EURV=0.59 AC-FT
YEVRV= 5581.59
Y100=5583.74
Q100=1.63 CFS
MAX DEPTH=5.4'



LOTS 1-3, BLOCK 1
CAREUNIT OF AURORA
SUBDIVISION FILING NO 2
AUMHC SAFETY NET CAMPUS
MASTER DRAINAGE MAP

No.	Description of Revisions	Date	Name
1	1ST SUBMITAL	06/30/22	JC

Date:	JUNE 2022
Job Number:	
Design By:	J. COCO
Drawn By:	J. COCO
Checked By:	J. COCO

Sheet Number:

D1