

EXHIBIT A

SOUTH KINGSTON STREET AS DEDICATED ON THE PLAT OF KENTON HEIGHTS RECORDED NOVEMBER 15, 1968 AT RECEPTION NO. 886505, SITUATED IN THE SOUTHWEST QUARTER OF SECTION 23, TOWNSHIP 4 SOUTH, RANGE 67 WEST, 6TH PRINCIPAL MERIDIAN, IN THE CITY OF AURORA, COUNTY OF ARAPAHOE, STATE OF COLORADO, SAID RIGHT-OF-WAY BEING MORE PARTICULARLY DESCRIBED AS FOLLOWS:

BEARINGS SHOWN HEREIN ARE ASSUMED AND ARE BASED UPON THE SOUTH LINE OF THE SOUTHWEST QUARTER SECTION 23, T4S, R67W, 6TH P.M. WHICH BEARS N90°00'00"W BETWEEN A FOUND 3" BRASS CAP STAMPED "LS 16419" IN A RANGE BOX ACCEPTED AS THE SOUTHEAST CORNER OF THE SOUTHWEST $\frac{1}{4}$ OF SAID SECTION 23 AND A FOUND 3" BRASS CAP STAMPED "LS 16848" IN A RANGE BOX ACCEPTED AS THE SOUTHWEST CORNER OF THE SOUTHWEST $\frac{1}{4}$ OF SAID SECTION 23.

BEGINNING AT THE NORTHEAST CORNER OF LOT 5, SAID KENTON HEIGHTS;

THENCE ALONG THE NORTH, EAST, SOUTH, AND WEST RIGHT-OF-WAY LINES THE FOLLOWING FIVE (5) COURSES:

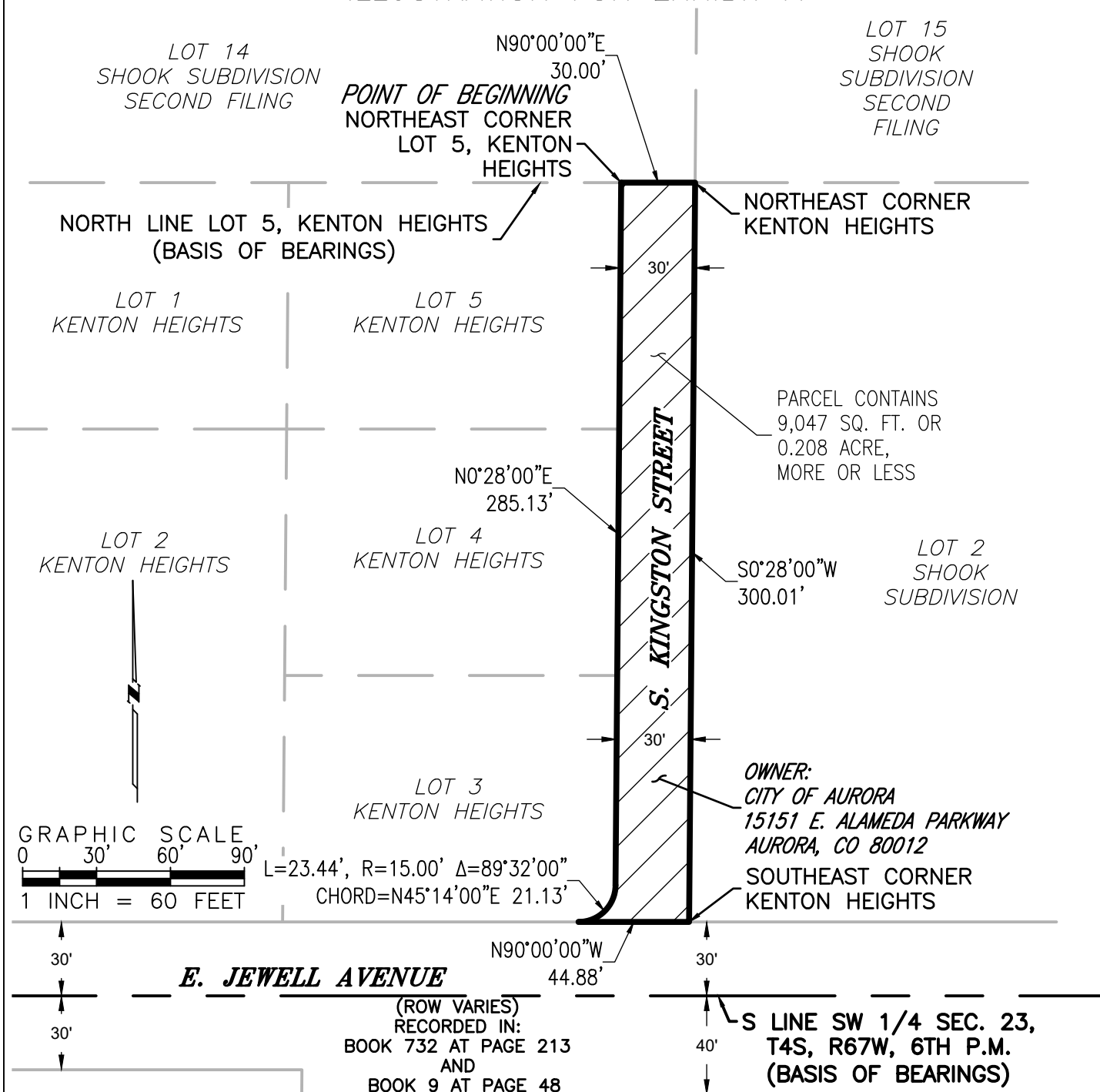
1. NORTH 90°00'00" EAST, A DISTANCE OF 30.00 FEET;
2. SOUTH 00°28'00" WEST, A DISTANCE OF 300.01 FEET TO THE NORTH RIGHT-OF-WAY LINE OF EAST JEWELL AVENUE AS RECORDED IN BOOK 732, PAGE 213, AND BOOK 9, PAGE 48 OF SAID COUNTY RECORDS;
3. NORTH 90°00'00" WEST ALONG SAID NORTH RIGHT-OF-WAY LINE, A DISTANCE OF 44.88 FEET TO A POINT OF NON-TANGENT CURVATURE;
4. DEPARTING FROM SAID NORTH RIGHT-OF-WAY LINE 23.44 FEET ALONG THE ARC OF A CURVE TO THE LEFT HAVING A RADIUS OF 15.00 FEET, A CENTRAL ANGLE OF 89°32'00", SUBTENDED BY A CHORD WHICH BEARS NORTH 45°14'00" EAST, AND A DISTANCE OF 21.13 FEET;
5. NORTH 00°28'00" EAST, A DISTANCE OF 285.13 FEET TO THE **POINT OF BEGINNING**.

CONTAINING 9,047 SQUARE FEET OR 0.208 ACRE, MORE OR LESS.

SAMUEL L GALLUCCI, PLS 38584
FOR AND ON BEHALF OF
EMK CONSULTANTS, INC.

EMK CONSULTANTS, INC. ENGINEERING & SURVEYING
LAND DEVELOPMENT SERVICES AND SOLUTIONS www.EMKC.com
7006 SOUTH ALTON WAY, BLDG. F CENTENNIAL, COLORADO 80112-2019 (303)694-1520

ILLUSTRATION FOR EXHIBIT A



EMK CONSULTANTS, INC. ENGINEERING SURVEYING
LAND DEVELOPMENT SERVICES AND SOLUTIONS www.EMKC.com
 7006 SOUTH ALTON WAY, BLDG. F CENTENNIAL, COLORADO 80112-2019 (303)694-1520
 THIS ILLUSTRATION DOES NOT REPRESENT A MONUMENTED SURVEY AND IS ONLY INTENDED TO DEPICT THE ACCOMPANYING LEGAL DESCRIPTION.

CITY OF AURORA, COLORADO

DRAWN BY	SCALE	R.O.W. FILE NO.
JTH	1"=60'	
CHECKED BY	DATE	JOB NO.
SLG3	07/13/23	13069

A RIGHT-OF-WAY VACATION SITUATED IN THE
 SOUTHWEST 1/4 OF SECTION 23, T4S, R67W, 6TH P.M.
 CITY OF AURORA, ARAPAHOE COUNTY, COLORADO