

Rush North Water Delivery Method

Fresh water used for completion operations at the Rush North location will be transported by a temporary water line ("Layflat").

Layflat description: Temporary, above-ground water supply line, typically 12" in diameter and typically made of synthetic rubber or similar "hose" material. They are used for the transfer of water from an identified water source to support company's hydraulic fracturing operations.

"Facilities" associated with use of Layflat lines include the following:

- In-line pumps
- Spools
- Secondary containment equipment
- Ramps

Equipment used for installation may include pick-up trucks, flatbed trailers, skid steer, and skid steer mounted reel winder.

Layflat lines are laid on the surface, at grade and do not require excavation. They do not require staking in order to secure them from movement and are placed at least 10' from the edge of the roadway.

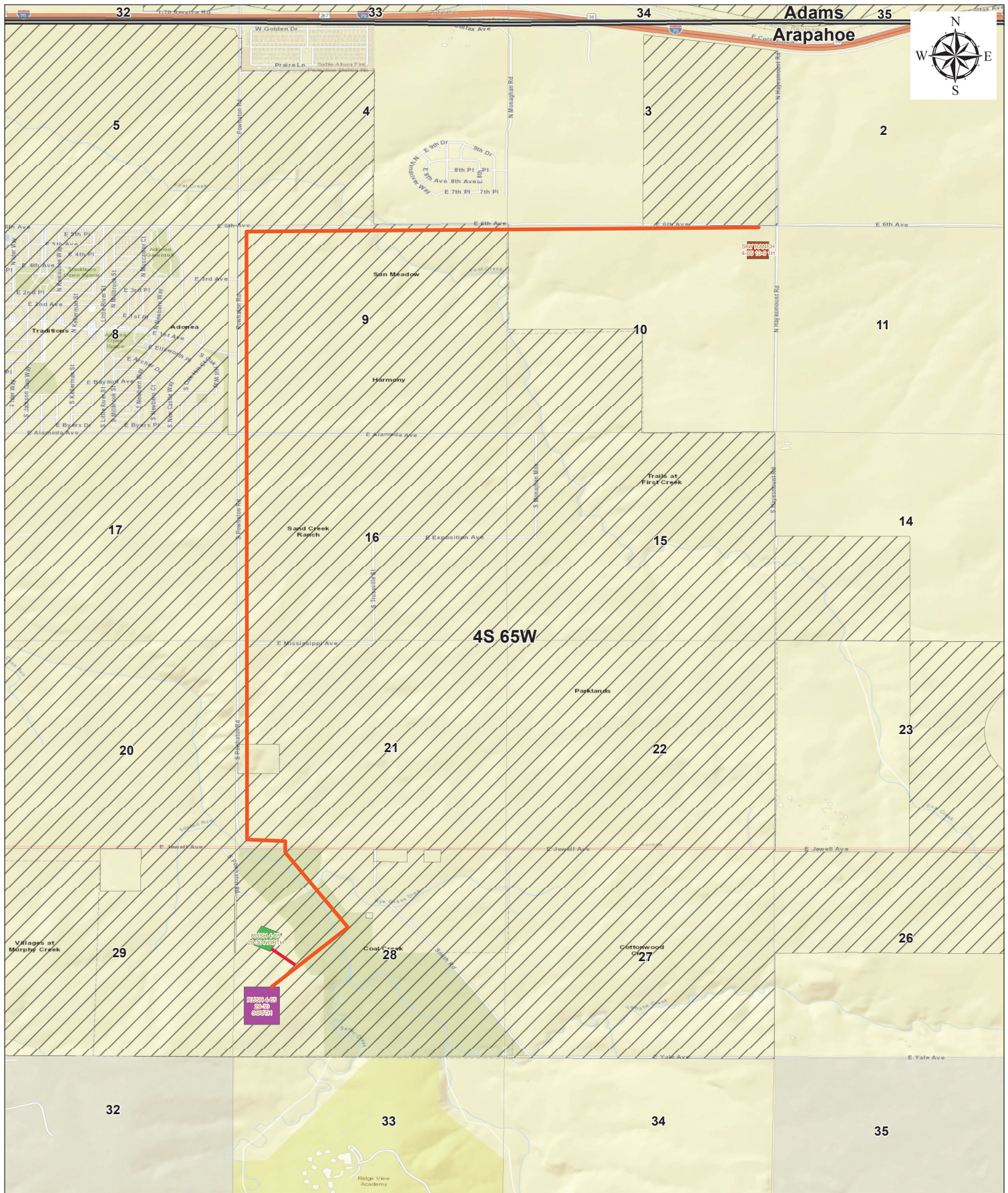
Deployment and retrieval of a Layflat line: a truck carrying spools of hose follows along-side a skid steer tractor. The skid steer carries and straddles the spool of Layflat line and releases the hose by the reel rolling forward. Victaulic couplings are used to assemble segments of Layflat hose. The process of retrieving the Layflat hose involves the same equipment and process in reverse (reel rolling backward). When Layflat lines run alongside road right of way, traffic control plans are implemented to manage and mandate safety procedures.

Route Description

The scope of this fresh water transfer will originate from Sky Ranch Pond located in Section 10, T4S, R65W, Arapahoe County, Colorado. *The route described below is contingent upon several agreements with various parties and is subject to change.*

Rush North

- From the Sky Ranch Pond in Section 10 the route heads due West along E. 6th Avenue to Powhatan Road, (*City license needed*), then South, the first mile South is covered under MLA 17-87 Exhibit A-5, the second 2 miles down to Jewell Ave., then East along Jewell Ave. approximately 1/4 mile, is covered under MLA 17-18, Exhibit A, Pt. 1.
- Then Southeast along Coal Creek via agreement on private land (Arapahoe County Reception #D7066796) approximately 1/2 mile until it turns Southwest across a private landowner via agreement (Arapahoe County Reception #D9109319) to enter pad location.



4/20/2020
©Crestone Peak Resources GIS
Created by julie.long

Sky Pit CoA to Rush Pads

Disclaimer:
Information depicted on these maps is the sole property of Crestone Peak Resources, LLC (CPR). Electronic reproductions of any portion of this map is strictly prohibited absent the written consent of CPR. This information is to be used for reference purposes only. CPR does not guarantee the accuracy of this material and is not responsible for any misuse or misrepresentation of this information

0 0.275 0.55 1.1 Miles

Coordinate System: GCS WGS 1984

Legend

- Rush LFL
- RUSH 4-65 29-30 NORTH
- RUSH 4-65 29-30 SOUTH
- SKY RANCH 4-65 10-9 1H
- ▨ Aurora City Limits



**CRESTONE PEAK
RESOURCES**