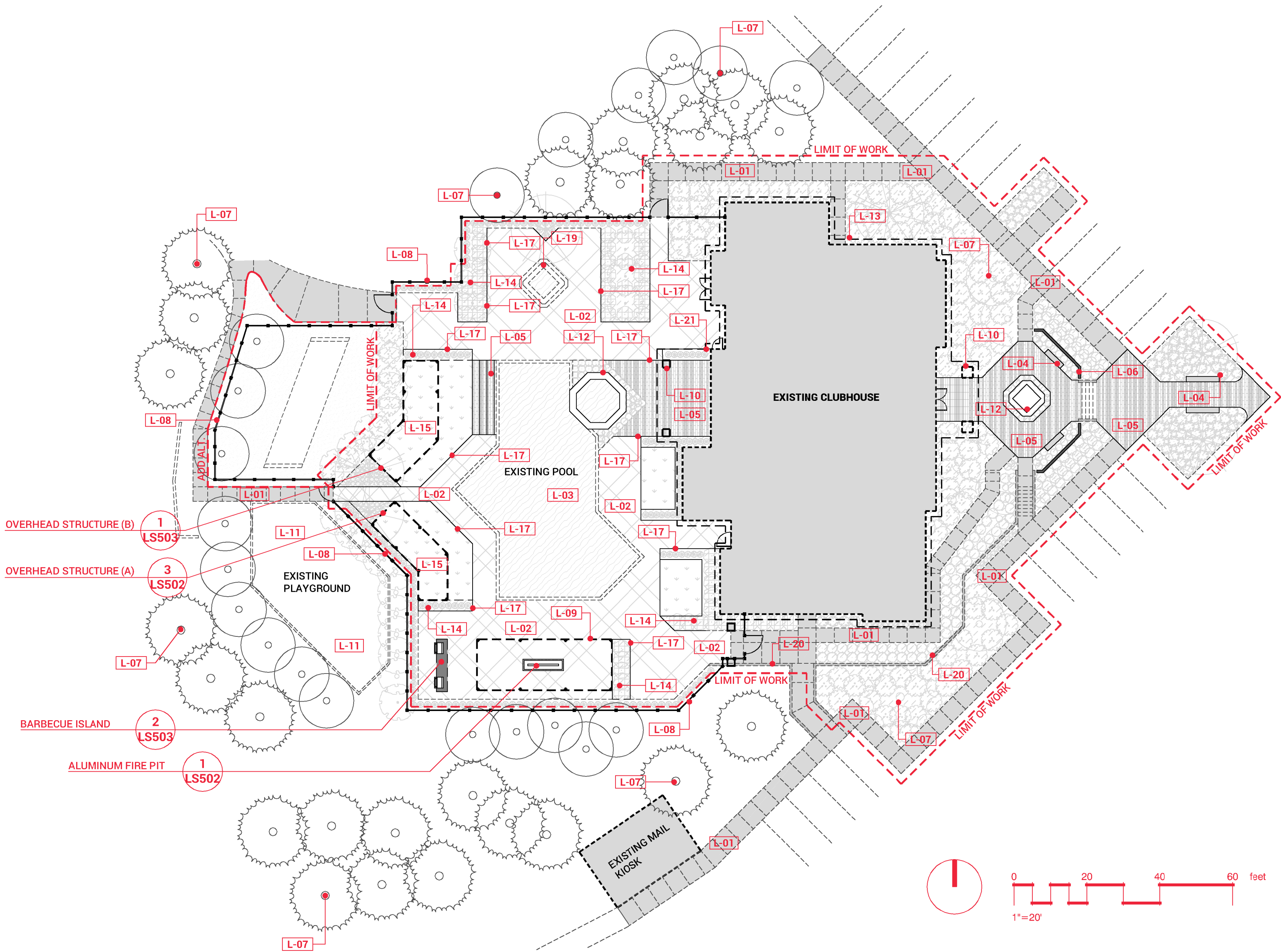


REFERENCE NOTES SCHEDULE

| SYMBOL | SITE LAYOUT DESCRIPTION | QTY | DETAIL |
|--------|--|---------|--------|
| L-01 | EXISTING CONCRETE WALKWAYS - (PROTECT-IN-PLACE) | | |
| L-02 | EXISTING POOL DECK - (PROTECT-IN-PLACE) | | |
| L-03 | EXISTING POOL AND POOL COPING - (PROTECT-IN-PLACE) | | |
| L-04 | CONCRETE SEAT WALLS - SMOOTH TROWEL FINISH | 2/LS501 | |
| L-05 | NEW CONCRETE PAVER - 6" X 24" X 4" BELGARD MODULINE SERIES - SHOT BLAST FINISH - COLORS GRAPHITE AND FOUNDRY - RUNNING BOND LAYOUT PER PLAN (5/LS501) - OR APPROVED EQUAL | 3/LS501 | |
| L-06 | 3' EXPOSED X 12" WIDE CONCRETE COURTYARD WALL | 1/LS501 | |
| L-07 | EXISTING TREE (PROTECT-IN-PLACE) | | |
| L-08 | EXISTING FENCE - (PROTECT-IN-PLACE) | | |
| L-09 | EXISTING CABANA TO BE REFINISHED TO MATCH COLOR OF NEW STRUCTURES, CUT/REMOVE ALL DECORATIVE OVERHANG ENDS ON LATTICE, RAFTERS AND BEAMS TO HAVE SQUARE ENDS THAT MATCH NEW STRUCTURES (TYP.) | | |
| L-10 | EXISTING BUILDING PILLAR - (PROTECT-IN-PLACE) | | |
| L-11 | EXISTING PLAYGROUND - (PROTECT-IN-PLACE) | | |
| L-12 | REFINISH FOUNTAIN - (PROTECT-IN-PLACE) EXISTING WATER FEATURE STONE BASE - (ENTIRE CIRCUMFERENCE) - TOP 3" ALUMINUM METAL CAP - COLOR WAVE- MIDNIGHT BLACK CW20 - 2" X 12" INSIDE 2'-3" OF WATER LINE TO BE TILED WITH THE SAME TILE - OR APPROVED EQUAL - SEE 3D DETAIL FOR REFERENCE | | |
| L-13 | EXISTING BUILDING ROOFLINE/OVERHAND | | |
| L-14 | NEW PLANTER AREA TO BE CUT INTO EXISTING POOLDECK | | |
| L-15 | SYNTHETIC TURF AREA - BOLT 90 - GB-112 - PILE HEIGHT: 2" - (PER SOUTHWEST GREENS) | 3/LP501 | |
| L-17 | CUT EXISTING CONCRETE POOL PATIO BACK TO THIS EDGE FOR NEW PLANTERS AND TURF AREAS | | |
| L-19 | EXISTING HOT TUB AND HOT TUB COPING - PROTECT-IN-PLACE | | |
| L-20 | EXISTING RETAINING WALL - PROTECT-IN-PLACE | | |
| L-21 | EXISTING ROOF STRUCTURE - (PROTECT-IN-PLACE) | | |



6/4

LOFTSIXFOUR

DESIGNING OUTDOOR LIVING EXPERIENCES

A: 9500 S 500 W STE 215
SANDY UT 84070

P: 801 878 4717

W: LOFTSIXFOUR.COM

THE DESIGNS SHOWN AND DESCRIBED HEREIN INCLUDING ALL TECHNICAL DRAWINGS, GRAPHIC REPRESENTATION AND MODELS THEREOF, ARE PROPRIETARY AND CAN NOT BE COPIED, DUPLICATED, OR COMMERCIALY EXPLOITED IN WHOLE OR IN PART WITHOUT THE SOLE AND EXPRESS WRITTEN PERMISSION FROM LOFT SIX FOUR. THESE DRAWINGS ARE AVAILABLE FOR LIMITED REVIEW AND EVALUATION BY CLIENTS, CONSULTANTS, CONTRACTORS, GOVERNMENT AGENCIES, VENDORS, AND OFFICE PERSONNEL ONLY IN ACCORDANCE WITH THIS NOTICE.



ASPEN RIDGE

18851 E BALTIC PL /
AURORA / CO

DATE // 2020-09-09

PROJECT NO. // 2011

DRAWN BY // KCF

CHECKED BY // BAR

REVISIONS //

TITLE //

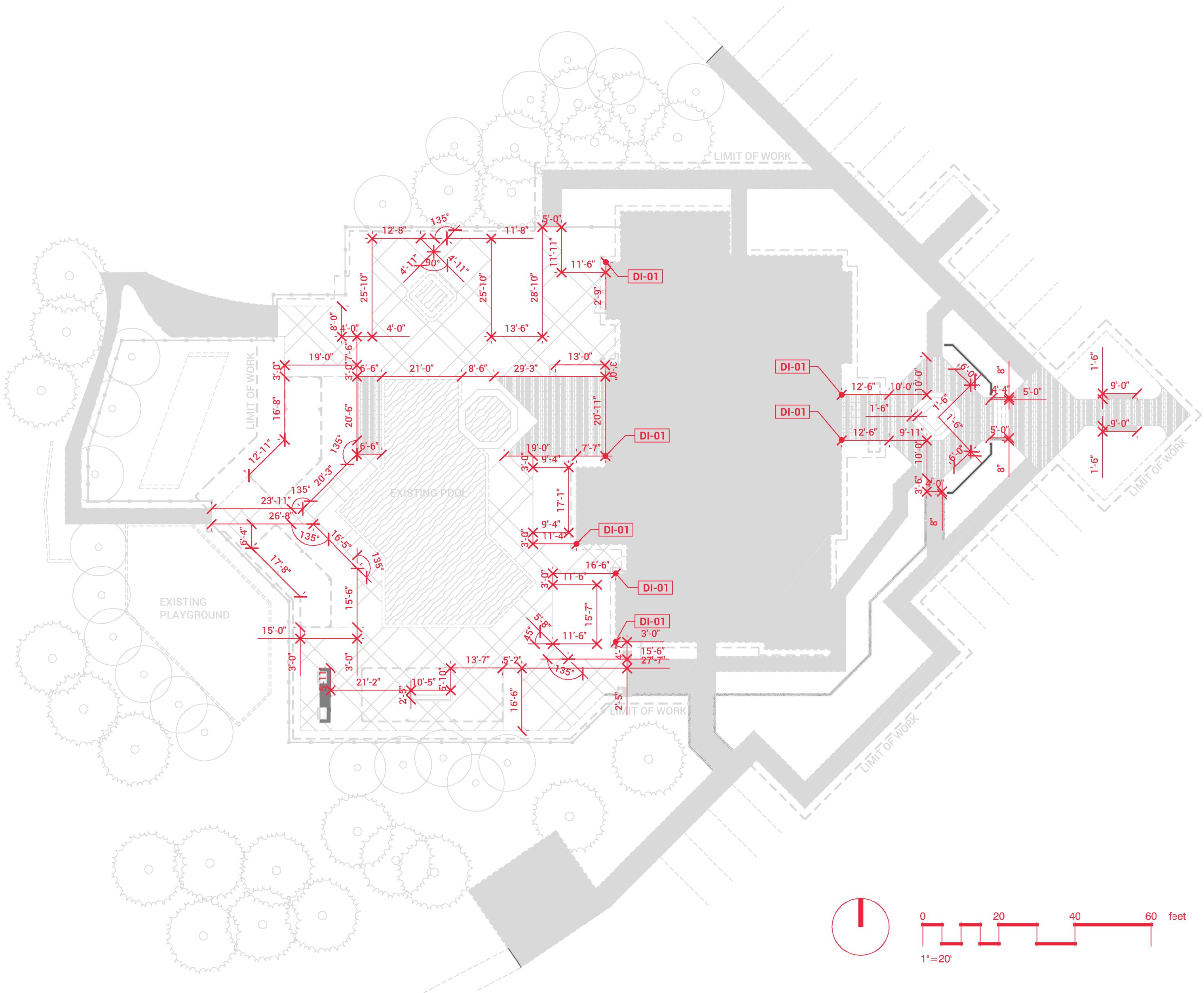
SHEET //

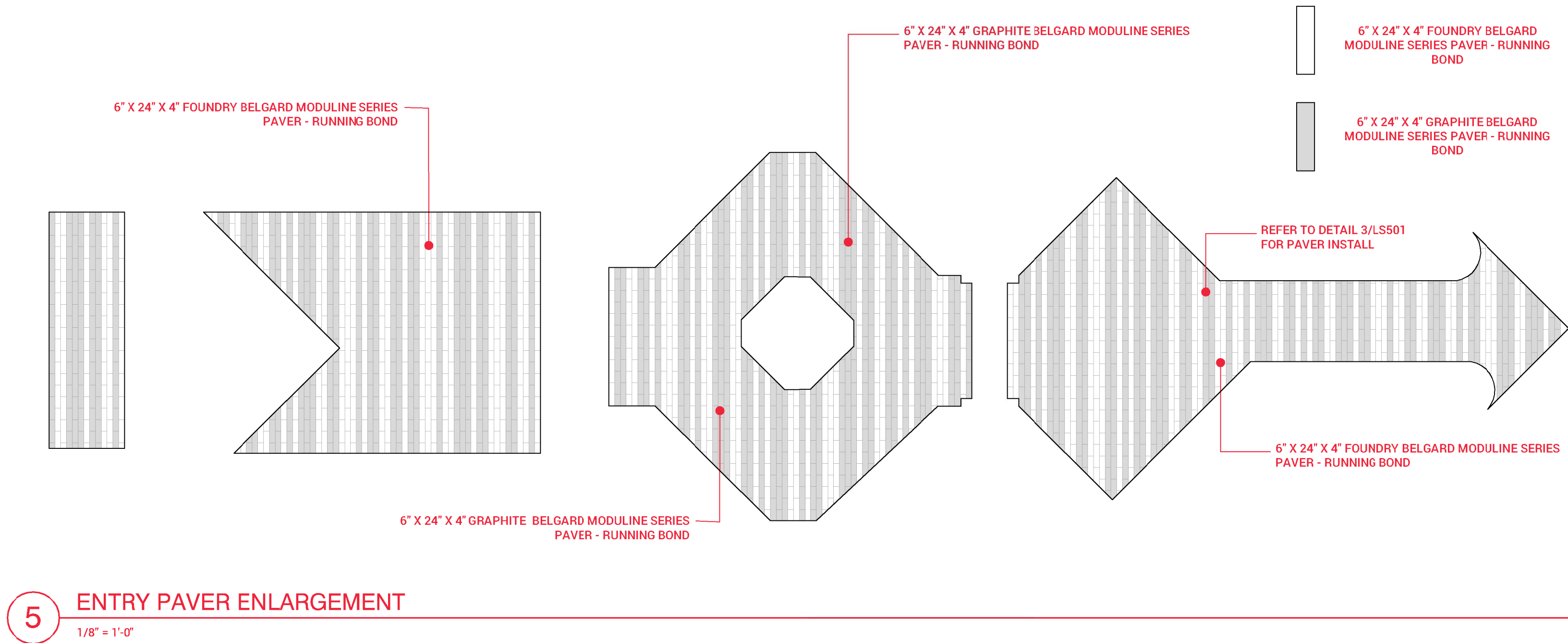
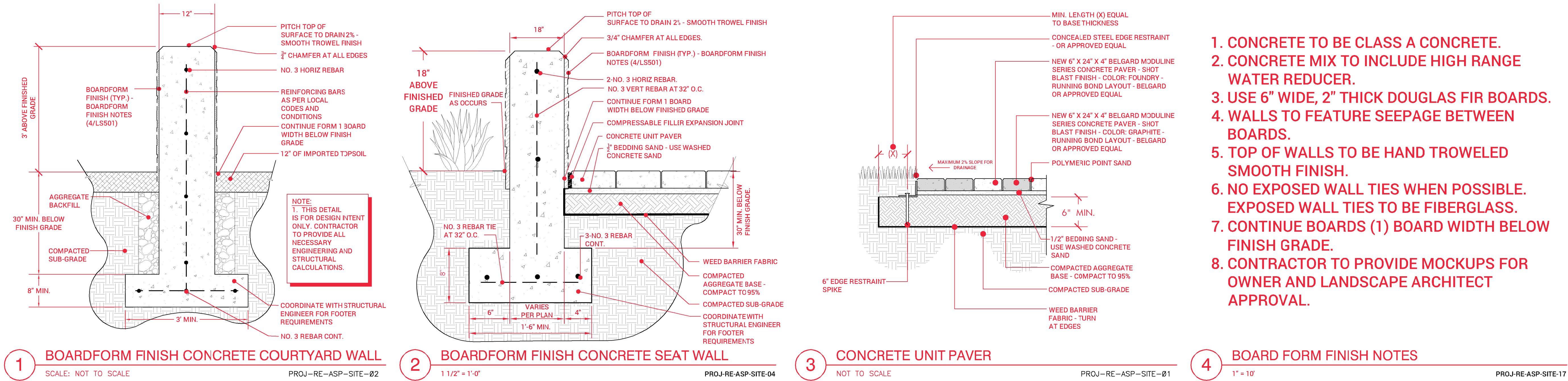
SITE LAYOUT
PLAN

LS101

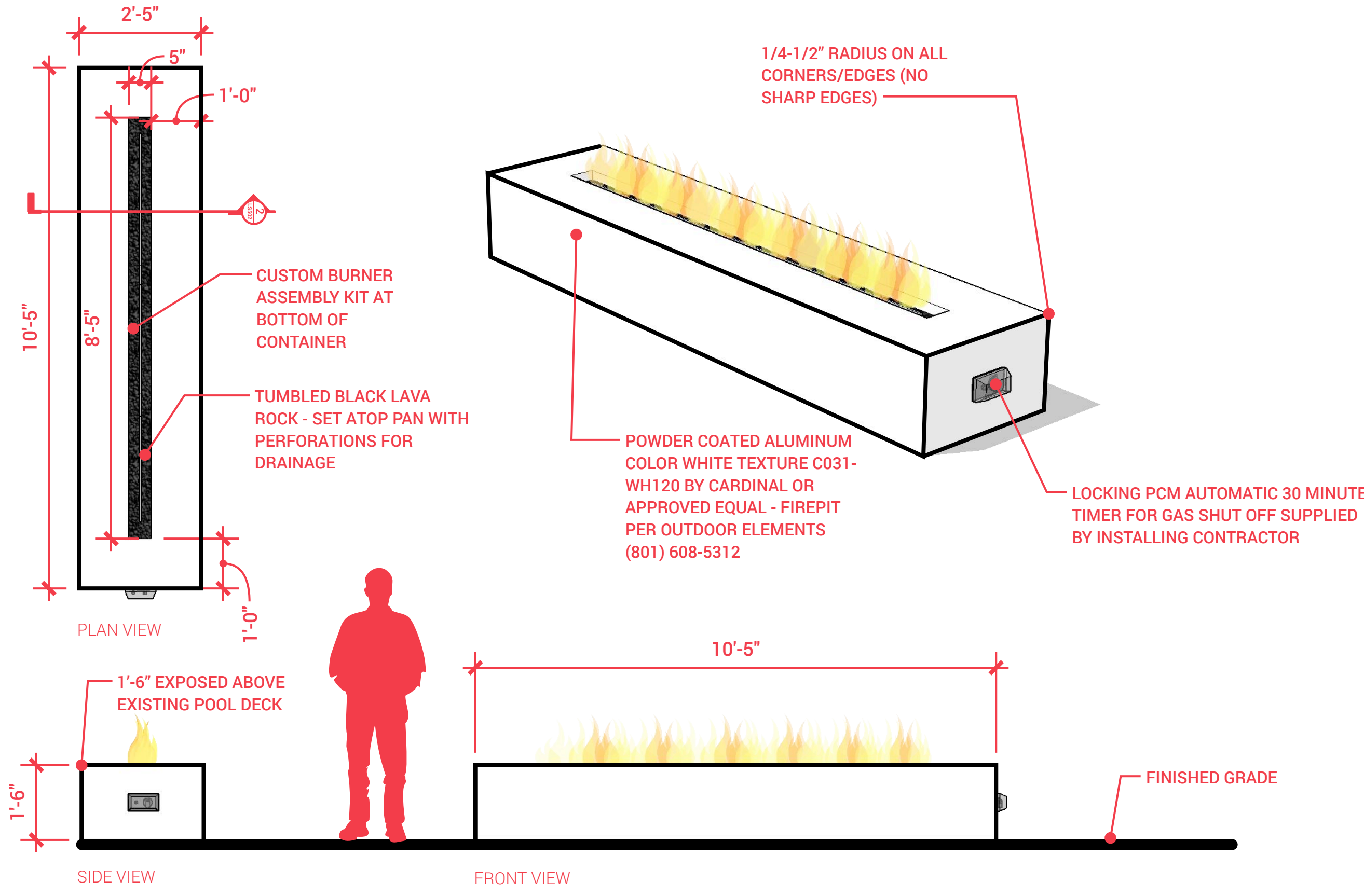
REFERENCE NOTES SCHEDULE

| SYMBOL | SITE DIMENSIONS DESCRIPTION | QTY | DETAIL |
|--------|---|-----|--------|
| DI-01 | POINT OF BEGINNING - ALL DIMENSIONS OF SCORE LINES, PLANTERS, AND CONCRETE CUTS ORIGINATE FROM OUTSIDE CORNER OF BUILDING AS SHOWN (TYP.) | | |

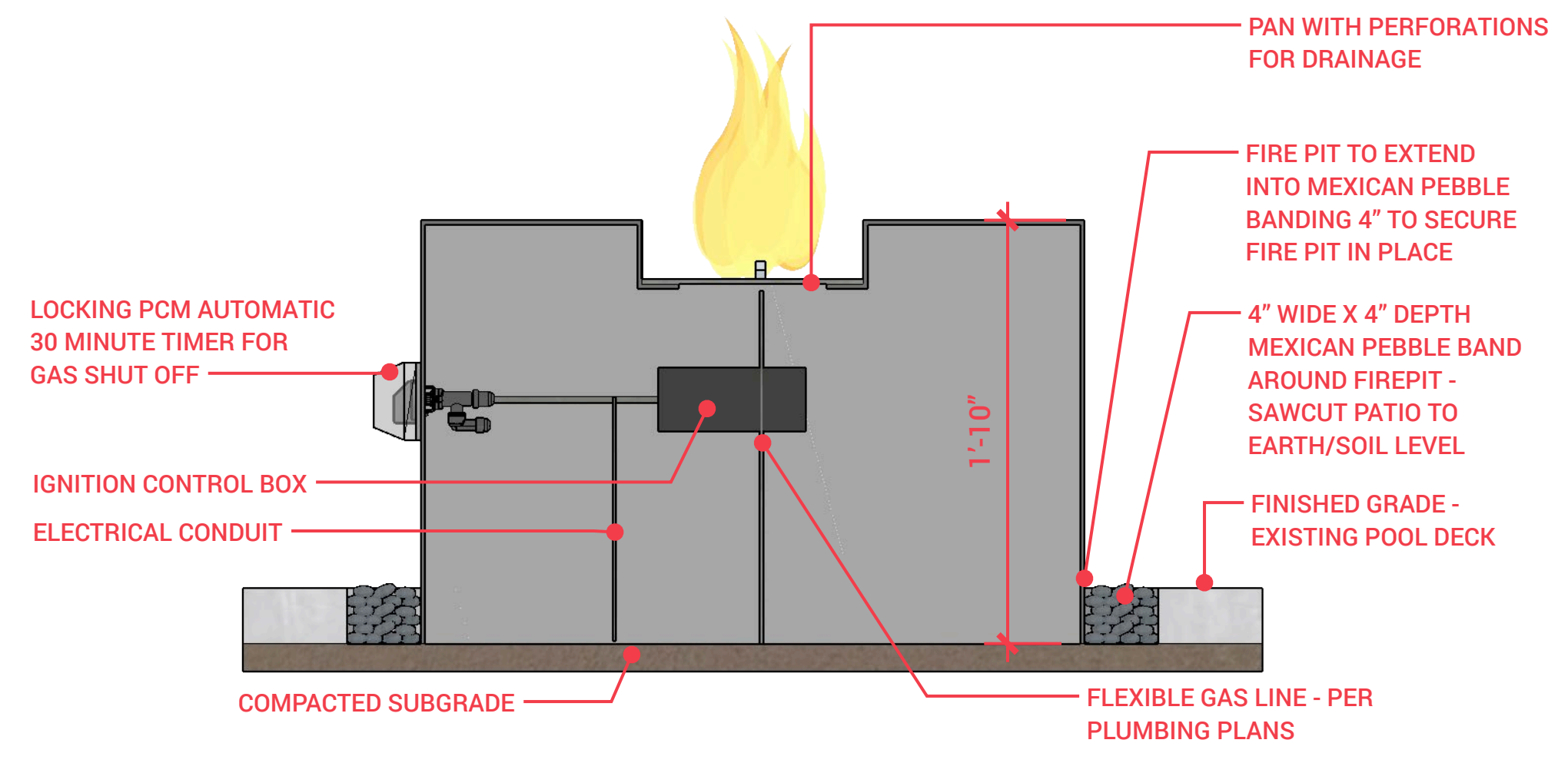




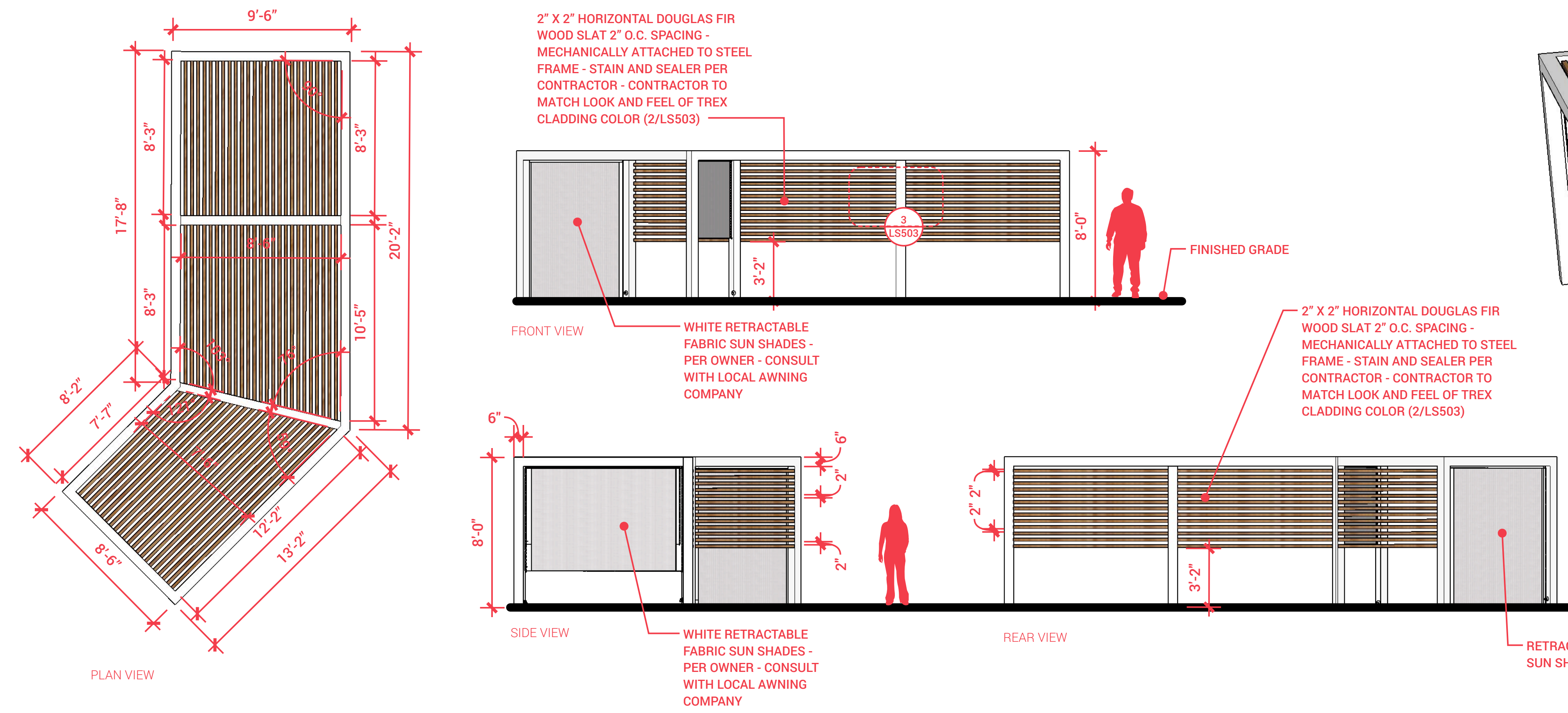
5 ENTRY PAVER ENLARGEMENT
1/8" = 1'-0"



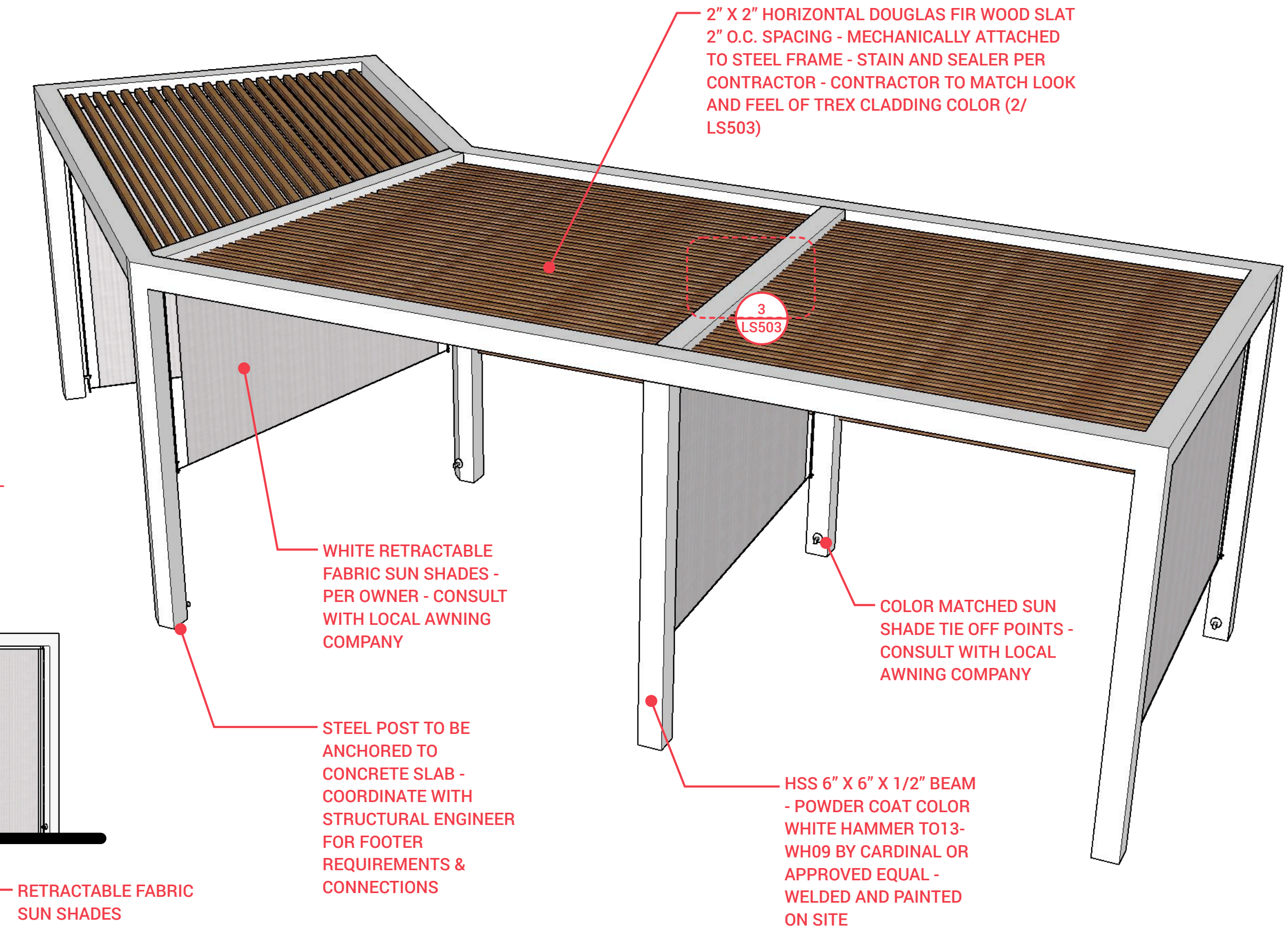
1 CUSTOM ALUMINUM FIRE PIT
LS502 SCALE: 1/2" = 1'-0"



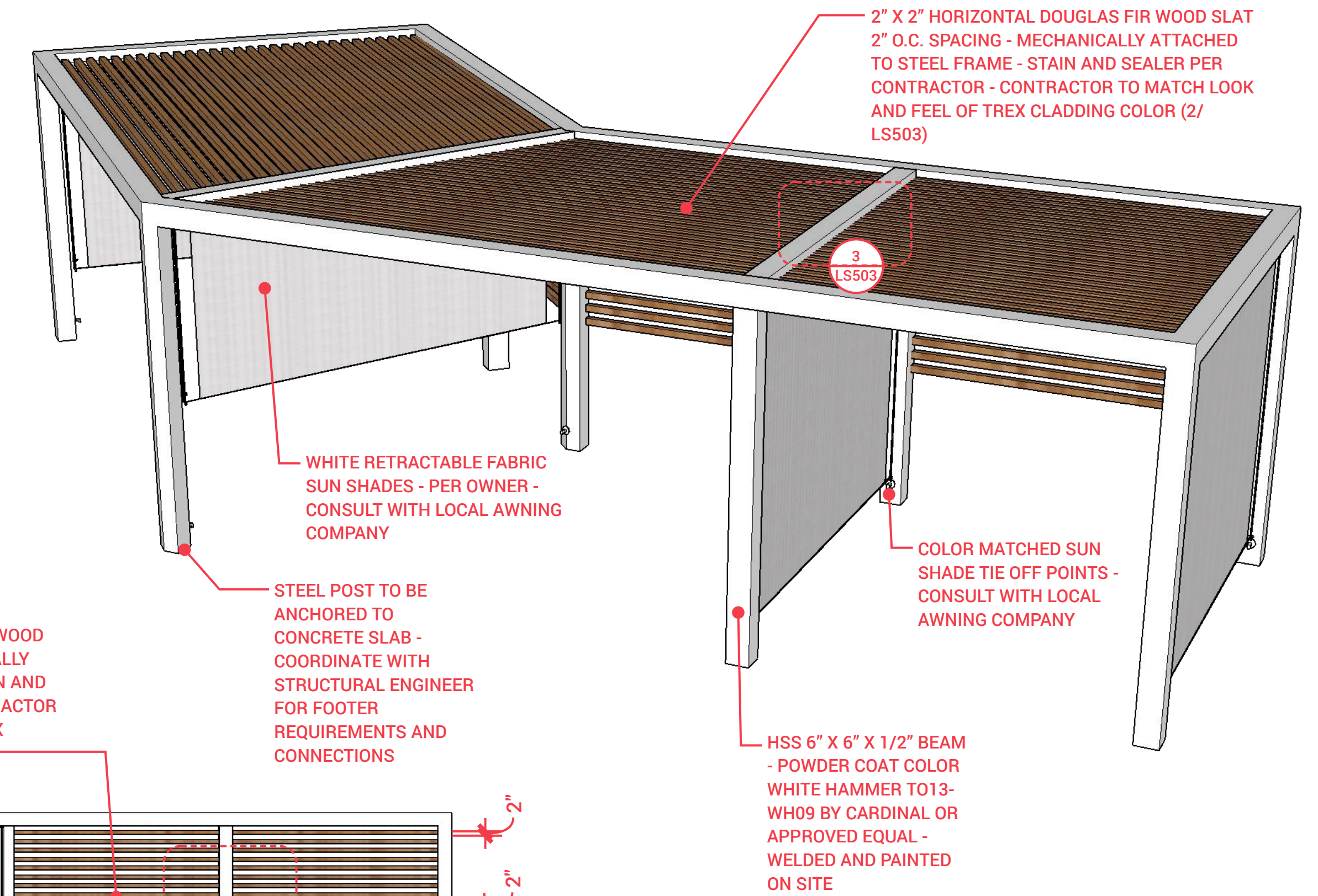
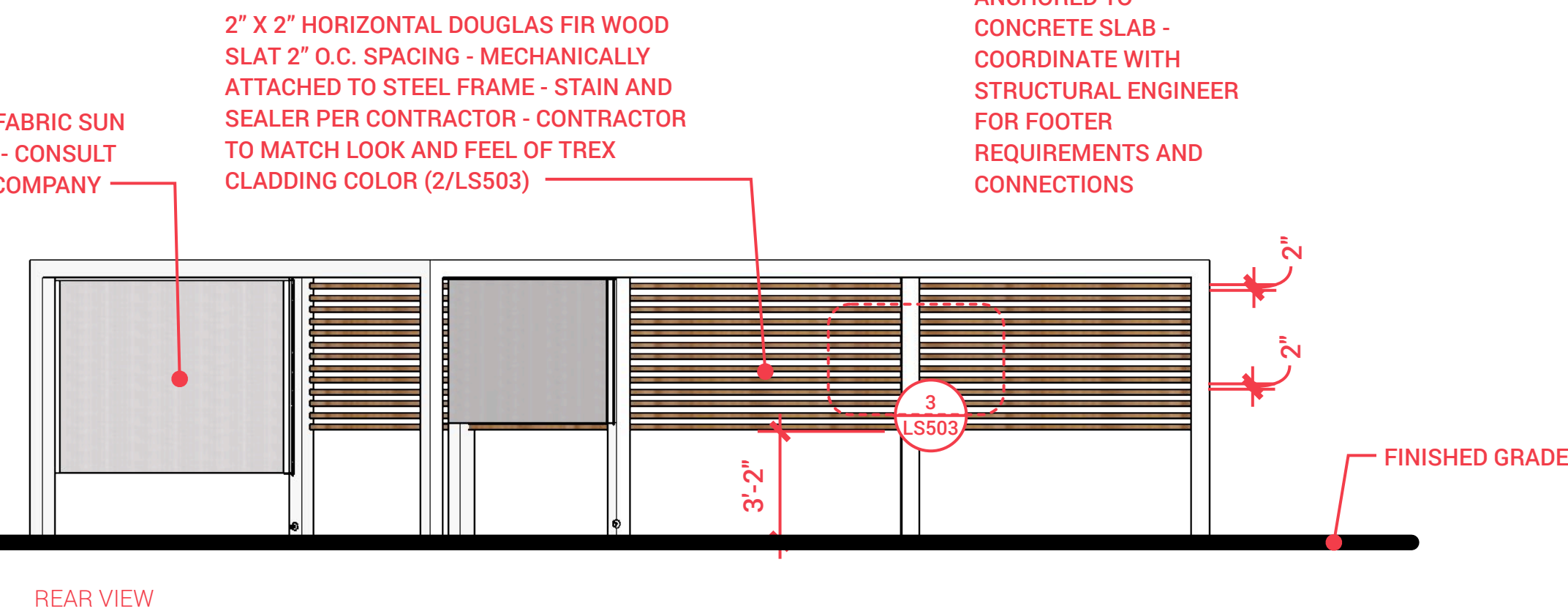
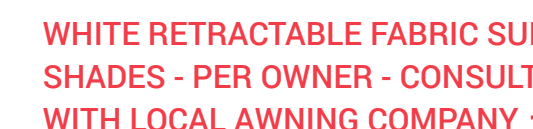
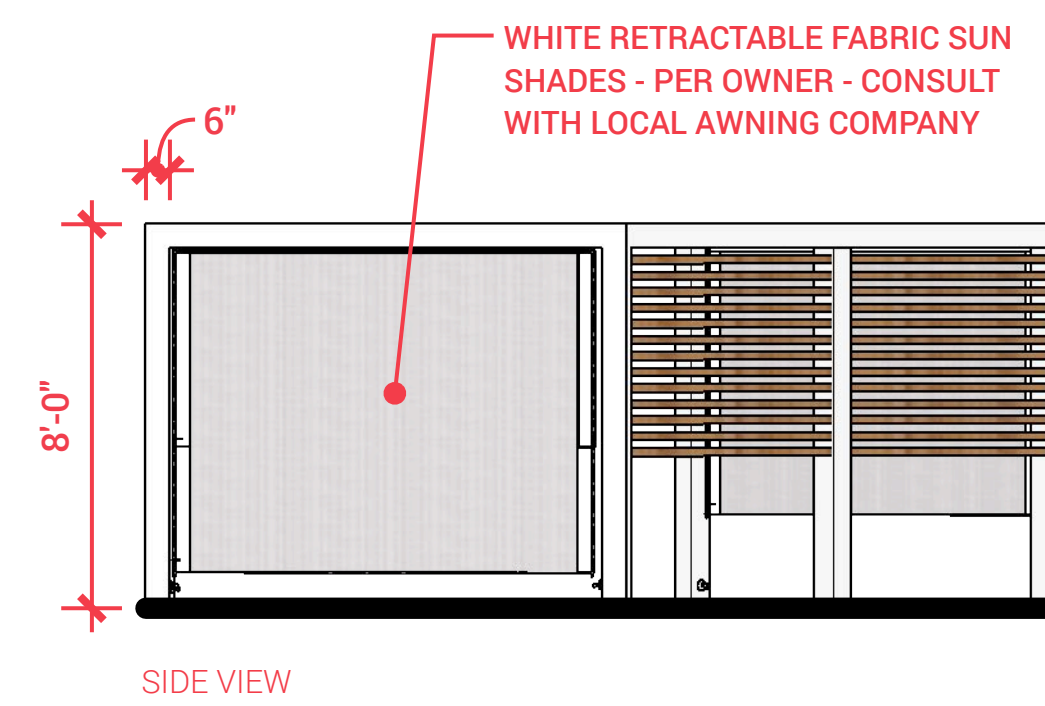
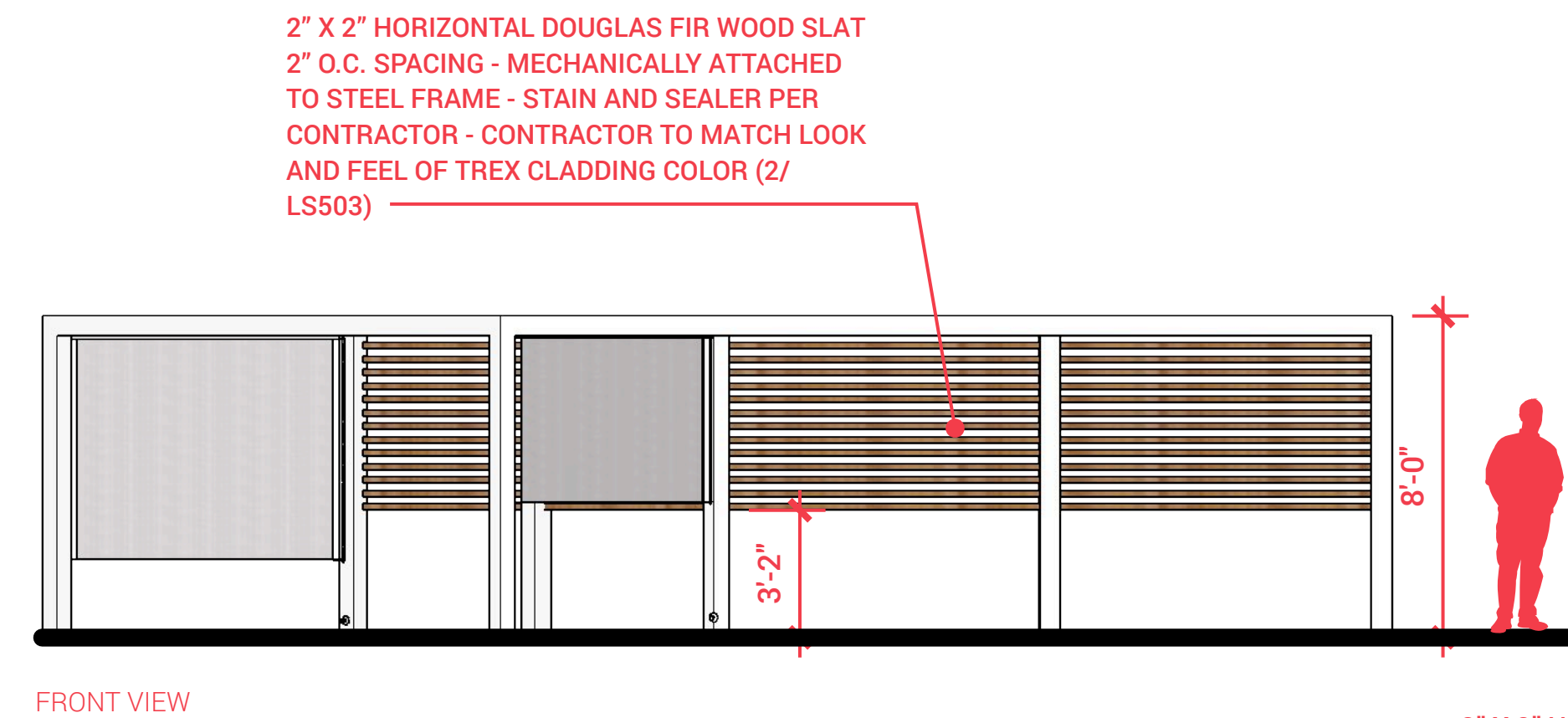
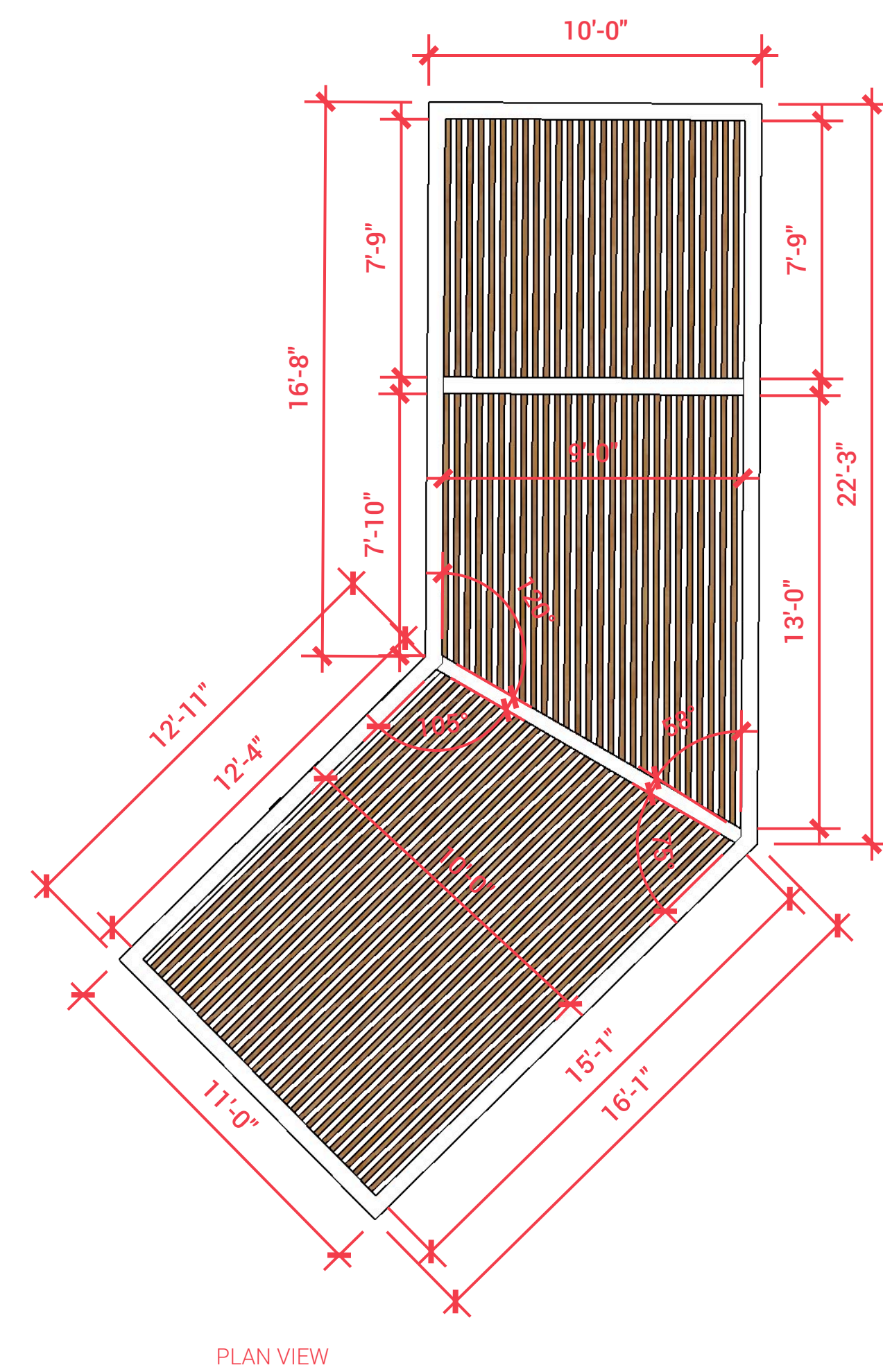
2 CUSTOM ALUMINUM FIRE PIT - TYPICAL SECTION
LS502 SCALE: 1 1/2" = 1'-0"



3 OVERHEAD SHADE STRUCTURE (A)
LS502 SCALE: 1/4" = 1'-0"

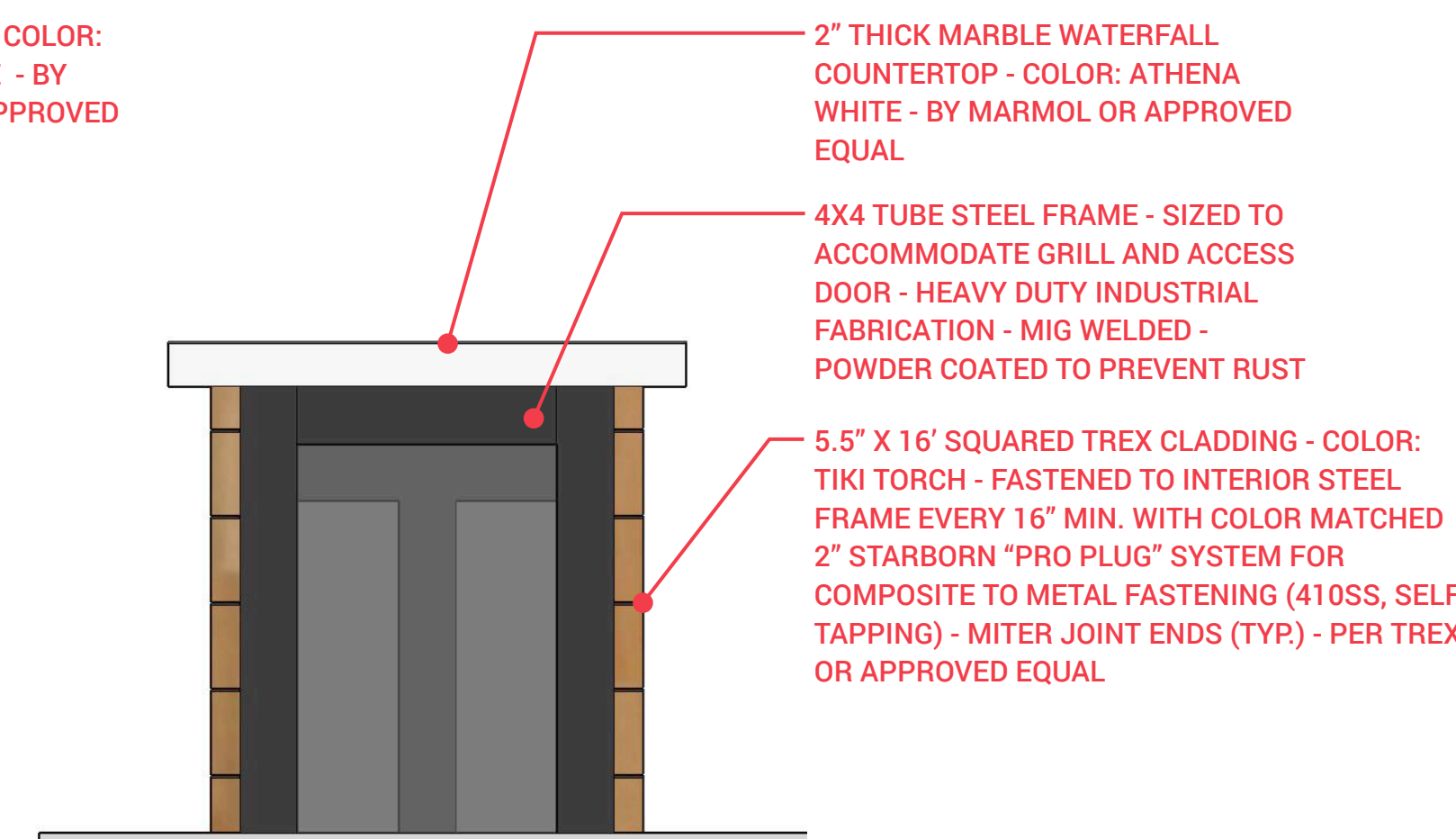
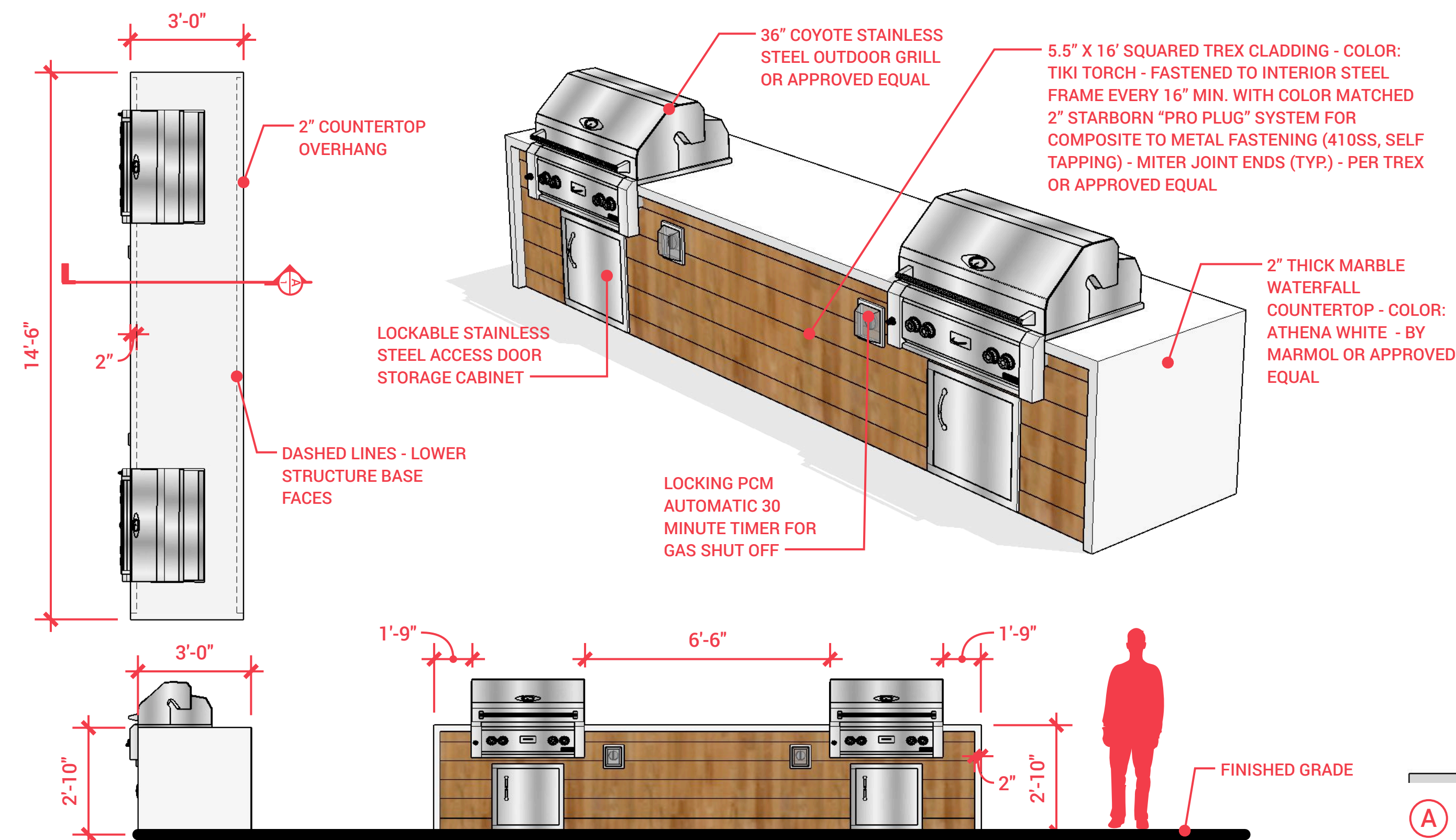


- GENERAL NOTES /**
1. DETAILS ARE FOR DESIGN INTENT ONLY. CONTRACTOR TO PROVIDE SHOP DRAWINGS FOR EACH CUSTOM ELEMENT FOR ARCHITECT AND LANDSCAPE ARCHITECT REVIEW.
 2. NOTES AND DETAILS ON SPECIFIC DRAWINGS TAKE PRECEDENCE OVER GENERAL NOTES AND TYPICAL DETAILS.
 3. DIMENSIONS TAKE PRECEDENCE OVER SCALES SHOWN ON DRAWINGS.
 4. CONTRACTOR TO COORDINATE INSTALLATION OF ALL OWNER FURNISHED LANDSCAPE ELEMENTS.
 5. NOTIFY LANDSCAPE ARCHITECT OF ANY DISCREPANCIES IN DESIGN OR STAKING BEFORE PLACING SITE IMPROVEMENTS.
 6. CONSULT WITH LANDSCAPE ARCHITECT ON ALL DESIGN DETAILS. FINAL MATERIALS TO BE APPROVED BY OWNER.
 7. ALL FINAL SELECTIONS OF LIGHTING FIXTURES AND POWER SUPPLY TO BE COORDINATED WITH ELECTRICAL ENGINEER.
 8. ALL STRUCTURAL REQUIREMENTS OF OUTDOOR SITE ELEMENTS TO BE COORDINATED WITH STRUCTURAL ENGINEER.



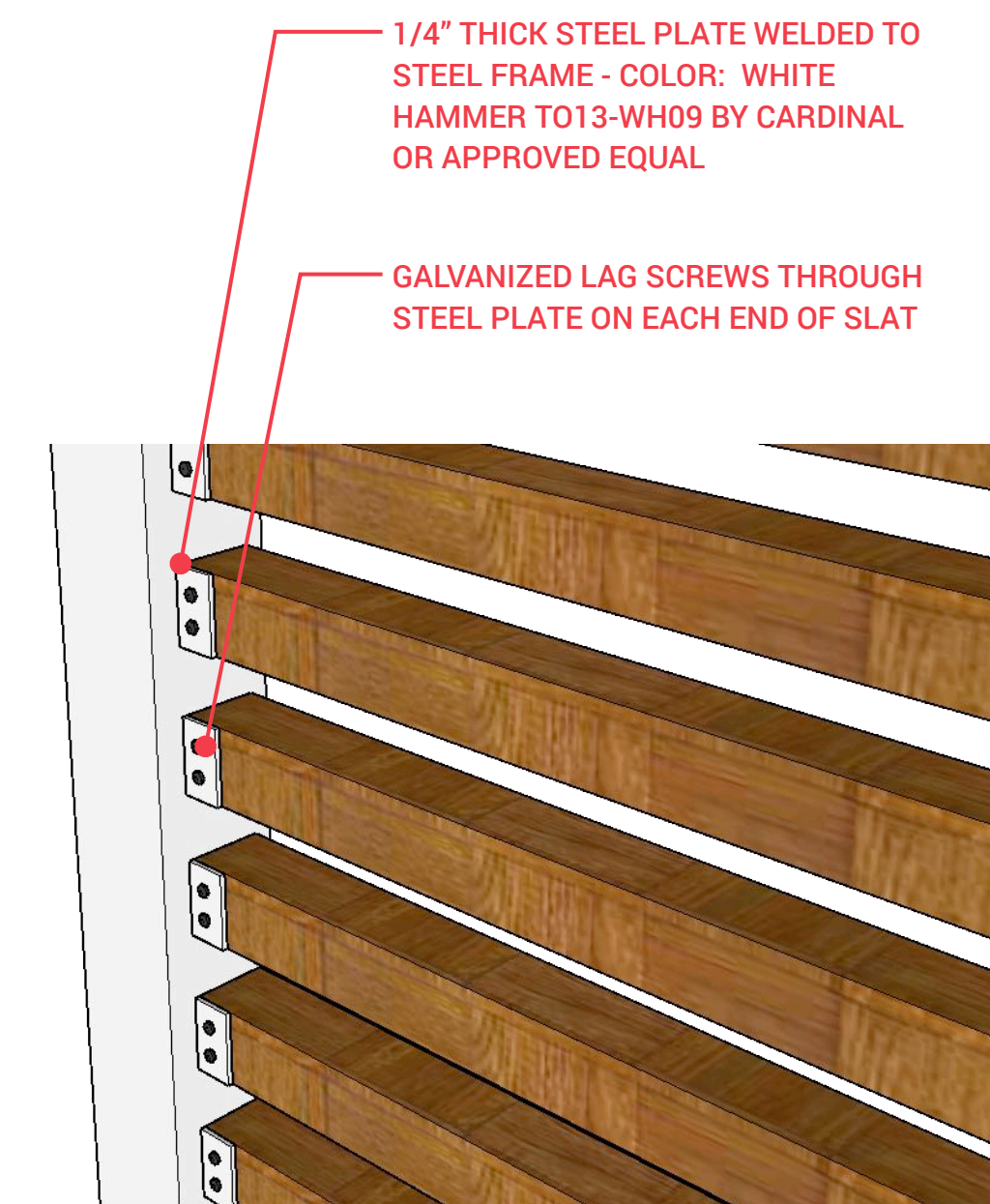
1 OVERHEAD SHADE STRUCTURE (B)

LS503 SCALE: 1/4" = 1'-0"



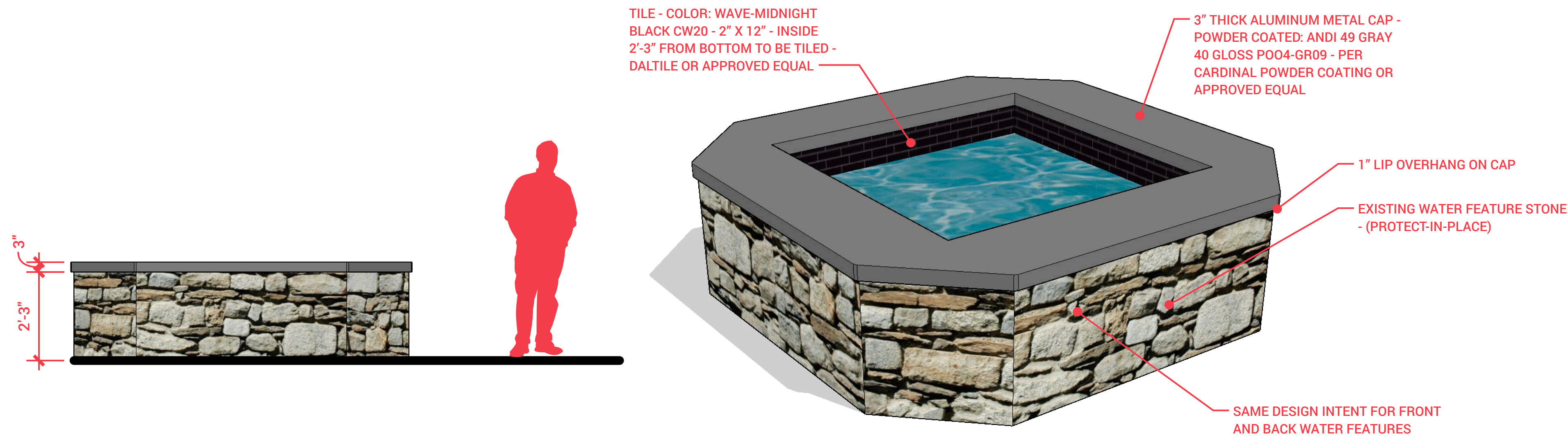
3 WOOD SLAT TO STEEL FRAME CONECTION

LS503 NTS



GENERAL NOTES /

1. DETAILS ARE FOR DESIGN INTENT ONLY.
CONTRACTOR TO PROVIDE SHOP DRAWINGS FOR EACH CUSTOM ELEMENT FOR ARCHITECT AND LANDSCAPE ARCHITECT REVIEW.
2. NOTES AND DETAILS ON SPECIFICATIONS TAKE PRECEDENCE OVER GENERAL NOTES AND TYPICAL DETAILS.
3. DIMENSIONS TAKE PRECEDENCE OVER SCALES SHOWN ON DRAWINGS.
4. CONTRACTOR TO COORDINATE INSTALLATION OF ALL OWNER FURNISHED LANDSCAPE ELEMENTS.
5. NOTIFY LANDSCAPE ARCHITECT OF ANY DISCREPANCIES IN DESIGN OR STAKING BEFORE PLACING SITE IMPROVEMENTS.
6. CONSULT WITH LANDSCAPE ARCHITECT ON ALL DESIGN DETAILS. FINAL MATERIALS TO BE APPROVED BY OWNER.
7. ALL FINAL SELECTIONS OF LIGHTING FIXTURES AND POWER SUPPLY TO BE COORDINATED WITH ELECTRICAL ENGINEER.
8. ALL STRUCTURAL REQUIREMENTS OF OUTDOOR SITE ELEMENTS TO BE COORDINATED WITH STRUCTURAL ENGINEER.



1 REFINISHED WATER FOUNTAIN (FRONT & BACK)
LS504 SCALE: 1/2" = 1'-0"

GENERAL NOTES /

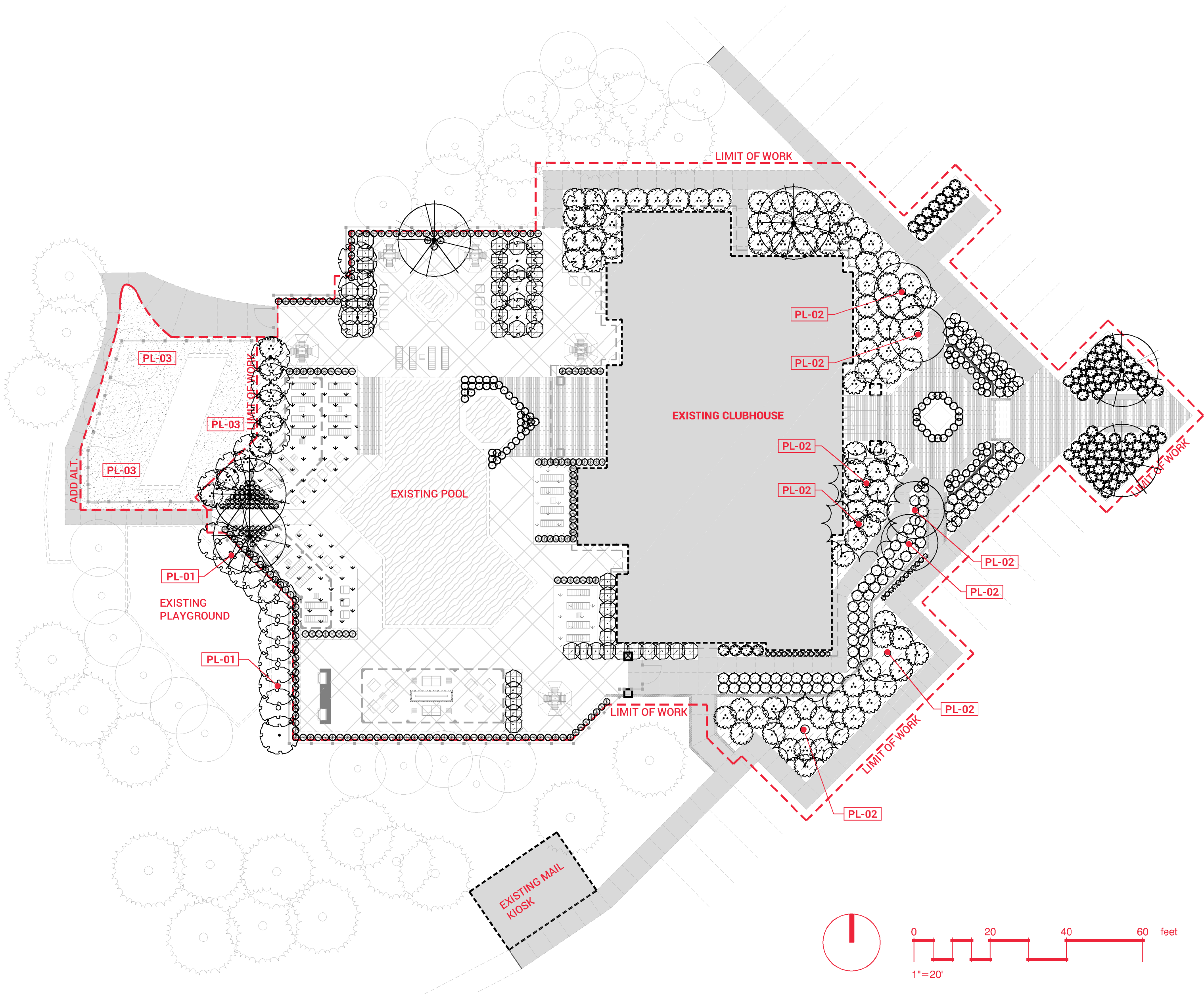
- 1. DETAILS ARE FOR DESIGN INTENT ONLY. CONTRACTOR TO PROVIDE SHOP DRAWINGS FOR EACH CUSTOM ELEMENT FOR ARCHITECT AND LANDSCAPE ARCHITECT REVIEW.
- 2. NOTES AND DETAILS ON SPECIFIC DRAWINGS TAKE PRECEDENCE OVER GENERAL NOTES AND TYPICAL DETAILS.
- 3. DIMENSIONS TAKE PRECEDENCE OVER SCALES SHOWN ON DRAWINGS.
- 4. CONTRACTOR TO COORDINATE INSTALLATION OF ALL OWNER FURNISHED LANDSCAPE ELEMENTS.
- 5. NOTIFY LANDSCAPE ARCHITECT OF ANY DISCREPANCIES IN DESIGN OR STAKING BEFORE PLACING SITE IMPROVEMENTS.
- 6. CONSULT WITH LANDSCAPE ARCHITECT ON ALL DESIGN DETAILS. FINAL MATERIALS TO BE APPROVED BY OWNER.
- 7. ALL FINAL SELECTIONS OF LIGHTING FIXTURES AND POWER SUPPLY TO BE COORDINATED WITH ELECTRICAL ENGINEER.
- 8. ALL STRUCTURAL REQUIREMENTS OF OUTDOOR SITE ELEMENTS TO BE COORDINATED WITH STRUCTURAL ENGINEER.

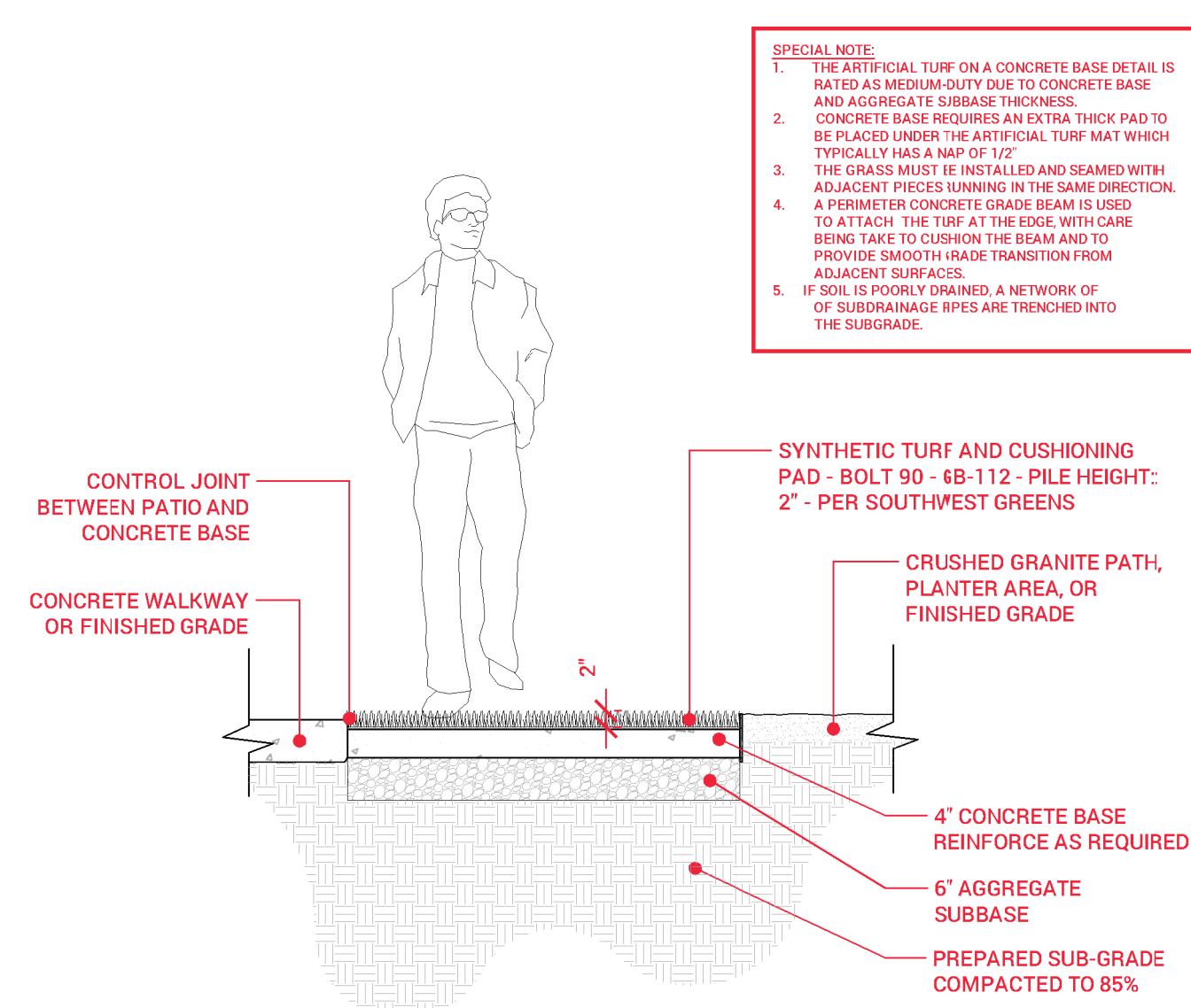
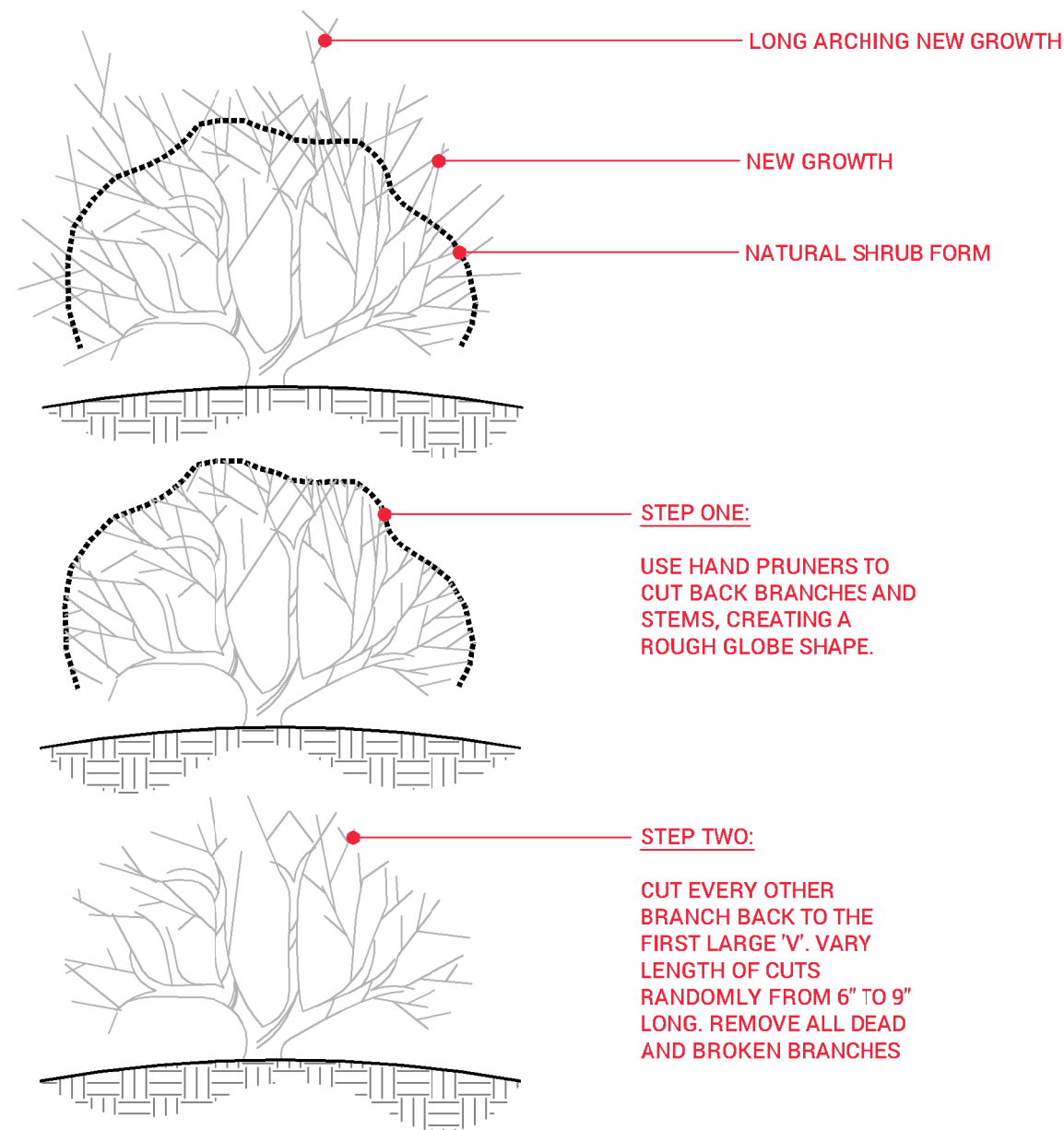
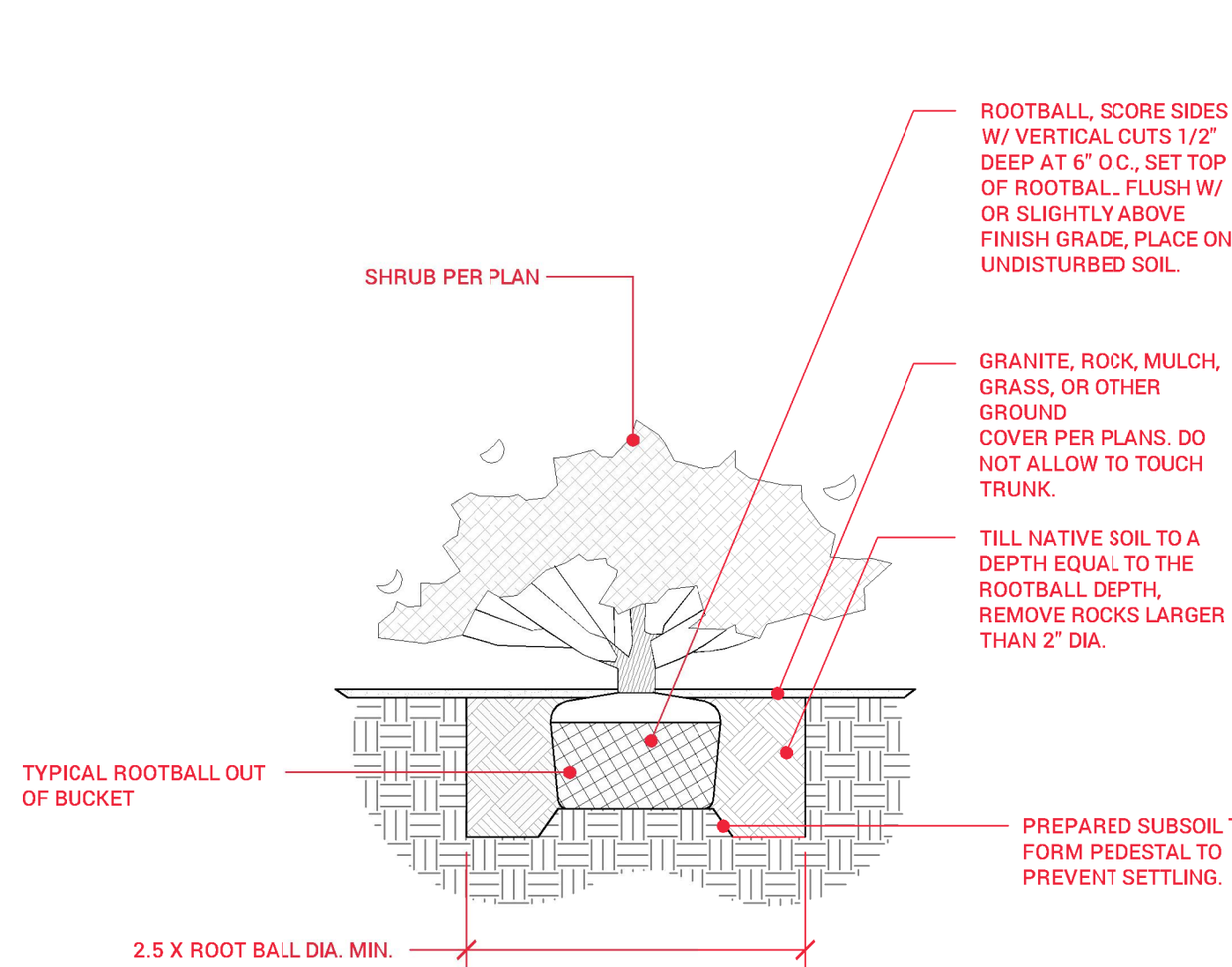
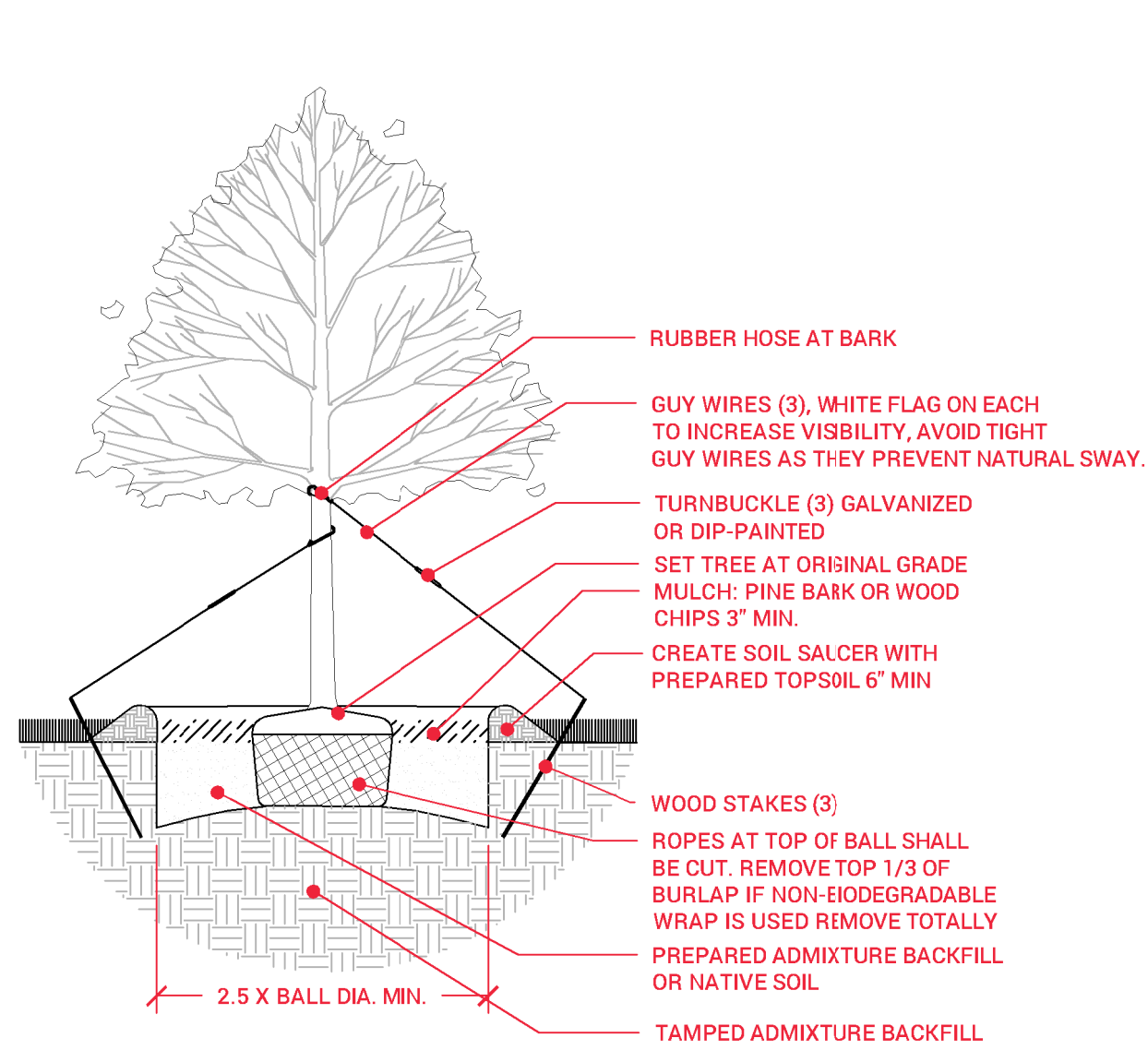
PLANT SCHEDULE

| TREES | BOTANICAL / COMMON NAME | SIZE | CONT. | QTY | |
|---|--|------------|-------|---------|----------|
|  | AMELANCHIER X GRANDIFLORA 'AUTUMN BRILLIANCE' / 'AUTUMN BRILLIANCE' SERVICEBERRY | 3" CAL. | B&B | 6 | |
| DECIDUOUS TREES | BOTANICAL / COMMON NAME | SIZE | CONT. | QTY | |
|  | QUERCUS ROBUR FASTIGIATA / COLUMNAR ENGLISH OAK | 3" CAL. | B&B | 16 | |
| EXISTING TREES | BOTANICAL / COMMON NAME | SIZE | CONT. | QTY | |
|    | EXISTING CONIFER TREE CONTRACTOR TO FIELD VERIFY QUANTITY - (PROTECT-IN-PLACE) | EXISTING | | 3 | |
| | EXISTING DECIDUOUS TREE CONTRACTOR TO FIELD VERIFY QUANTITY - (PROTECT-IN-PLACE) | EXISTING | | 5 | |
| | EXISTING OAK TREE CONTRACTOR TO FIELD VERIFY QUANTITY - (PROTECT-IN-PLACE) | EXISTING | | 10 | |
| SHRUBS | BOTANICAL / COMMON NAME | SIZE | HZONE | QTY | |
|  | ARONIA MELANOCARPA 'UCONNAM012' TM / GROUND HOG CHOKEBERRY | 5 GAL. | | 82 | |
|  | ARONIA MELANOCARPA 'UCONNAM165' TM / LOW SCAPE MOUND CHOKEBERRY | 5 GAL. | | 91 | |
|  | LIGUSTRUM VULGARE 'LODENSE' / LODENSE PRIVET | 5 GAL. | | 50 | |
|  | RHUS AROMATICA 'GRO-LOW' / GRO-LOW FRAGRANT SUMAC -TRIM TO FORM DENSE GROUND COVER | 5 GAL. | | 96 | |
| ORNAMENTAL GRASSES | BOTANICAL / COMMON NAME | SIZE | HZONE | QTY | |
|  | FESTUCA MAIREI / ATLAS FESCUE | 1 GAL. | | 114 | |
|  | PANICUM VIRGATUM 'ROTSTRAHLBUSCH' / ROTSTRAHLBUSCH SWITCH GRASS | 5 GAL. | | 184 | |
| PERENNIALS | BOTANICAL / COMMON NAME | SIZE | HZONE | QTY | |
|  | HEMEROCALLIS X 'STELLA D'ORO' / STELLA D'ORO DAYLILY | 1 GAL. | | 82 | |
| GROUND COVERS | BOTANICAL / COMMON NAME | CONT | HZONE | SPACING | QTY |
|  | TURF SOD | SOD | | | 1,522 SF |
| ROCK MULCH | BOTANICAL / COMMON NAME | CONT | HZONE | SPACING | QTY |
|  | 1" - 2" MEXICAN PEBBLE | ROCK MULCH | | | 35 SF |
|  | 1" WASATCH GRAY LANDSCAPE ROCK | ROCK MULCH | | | 6,715 SF |
| SYNTHETIC TURF | BOTANICAL / COMMON NAME | CONT | HZONE | SPACING | QTY |
|  | SYNTHETIC TURF / GB-112 (BOLT) BY SOUTHWEST GREENS CONTACT DEREK SPENCER 801-808-4270 | N/A | | | 1,467 SF |

REFERENCE NOTES SCHEDULE

| SYMBOL | PLANTING DESCRIPTION | QTY | DETAIL |
|--------|---|-----|--------|
| PL-01 | CONTRACTOR TO FIELD VERIFY EXISTING TREE SPECIES AND SPACING - NEW OAK TREES ON PLAN TO MATCH EXISTING TREE SPECIES AND SPACING | | |
| PL-02 | EXISTING TREE - (PROTECT-IN-PLACE) | | |
| PL-03 | ADD ALTERNATE TURF AREA - (PER OWNER) | | |

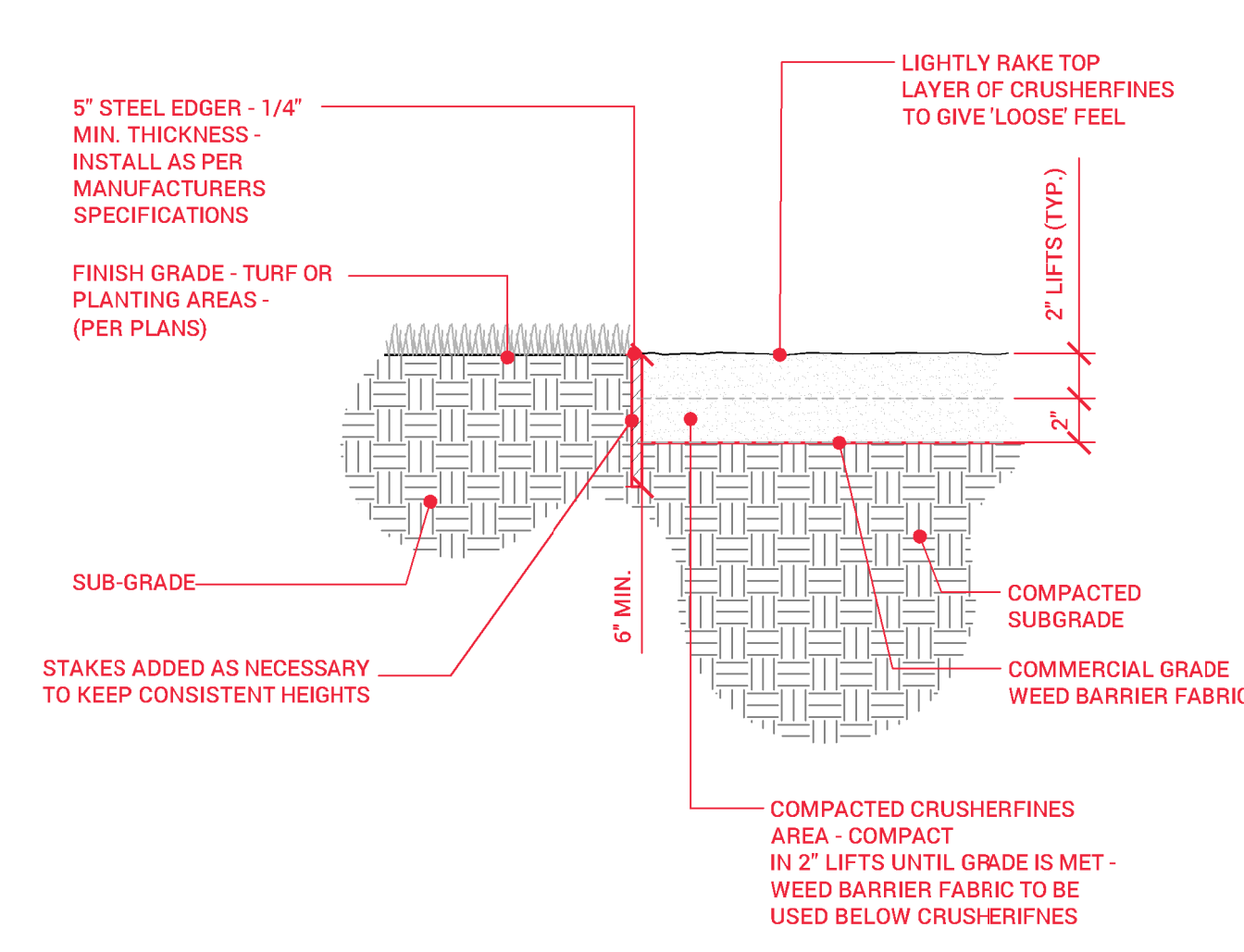
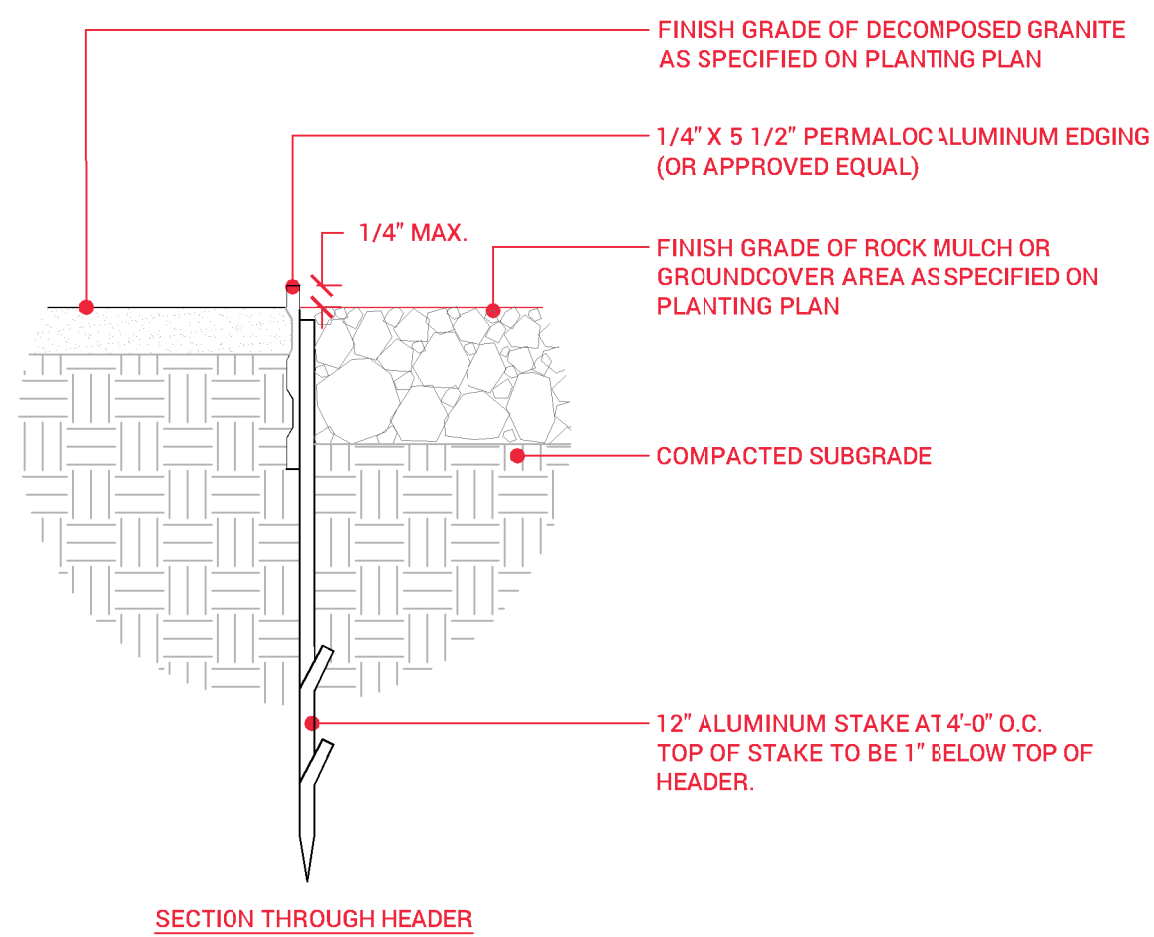
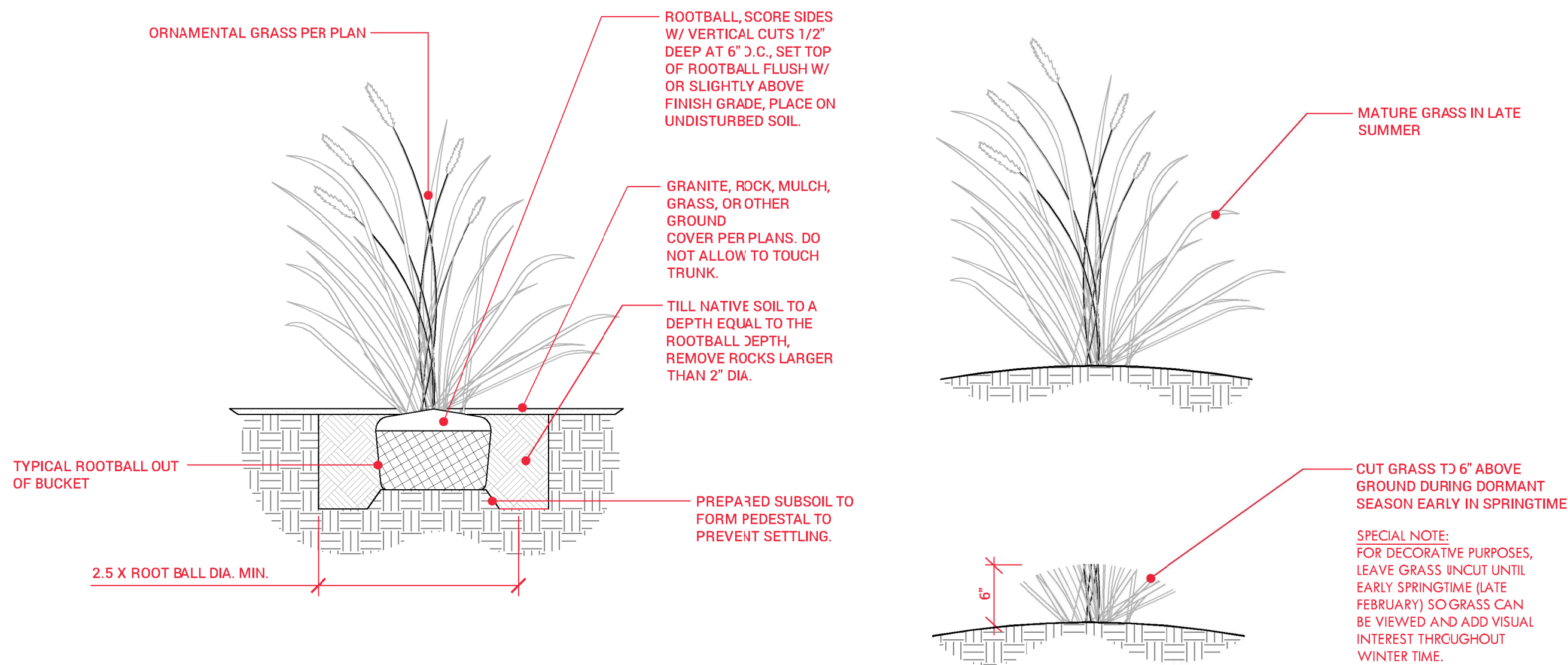




1 DECIDUOUS TREE PLANTING
1" = 1'-0"

2 SHRUB PLANTING AND PRUNING DETAIL
SCALE: NOT TO SCALE
PROJ-RE-ASP-PLAN-10

3 SYNTHETIC TURF ON CONCRETE BASE
1/2" = 1'-0"



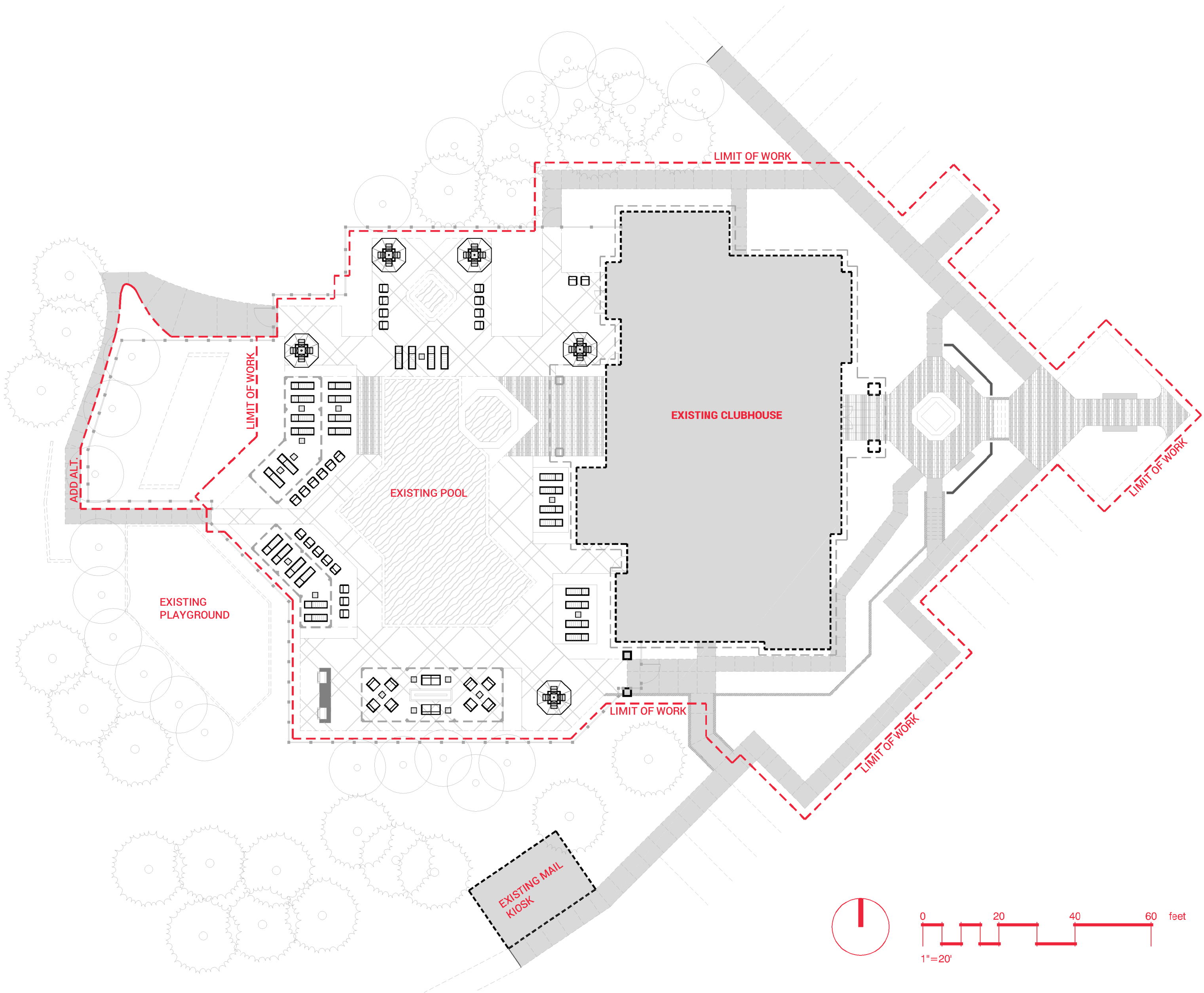
4 GRASS PLANTING AND PRUNING
SCALE: NOT TO SCALE
PROJ-RE-ASP-PLAN-01

5 1/4" THICK ALUMINUM EDGING IN PLANTING AREA
1" = 1'-0"



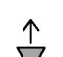
6 CRUSHER FINES PLANTER
SCALE: NOT TO SCALE

REFERENCE NOTES SCHEDULE




| SYMBOL | SITE FURNISHINGS DESCRIPTION | QTY | DETAIL |
|--------|--|-----|--------|
| | TEXAWOOD FRESCO STACKING CHAISE LOUNGE BY TEXACRAFT - MODEL #: TCAC110 - WHITE TRADITIONAL LUMBER - SATIN WHITE TEXAWOOD FRAME | 28 | |
| | TEXAWOOD FRESCO 18" SIDE TABLE BY TEXACRAFT - MODEL #: TCAT18 - WHITE LUMBER COLOR - SATIN WHITE FRAME FINISH | 16 | |
| | MEZA SPA CHAIR BY TEXACRAFT - MODEL #: M5607 - SMOOTH WHITE FRAME FINISH - LINEN TWEED CUSHION FABRIC | 24 | |
| | TEXAWOOD FUSE SIDE DINING CHAIR BY TEXACRAFT - MODEL #: TCM120 - WHITE FUSE LUMBER | 20 | |
| | TEXAWOOD FUSE 40" SQUARE DINING TABLE WITH HOLE BY TEXACRAFT - MODEL #: TC8120H - WHITE FUSE LUMBER | 5 | |
| | OCEANA 9" OCTAGONAL FREESTANDING UMBRELLA BY TEXACRAFT - MODEL #: 90PU - TUSCAN UMBRELLA FABRIC - WHITE UMBRELLA FINISH | 5 | |
| | STRUCTURE STATIONARY 2-SEAT LOVESEAT BY TEXACRAFT - MODEL # M28022 - SMOOTH WHITE FRAME FINISH - CANVAS TUSCAN CUSHION FABRIC | 2 | |
| | STRUCTURE LOUNGE CHAIR BY TEXACRAFT - MODEL #: M28002 - SMOOTH WHITE FRAME FINISH - CANVAS TUSCAN CUSHION FABRIC | 8 | |



LIGHTING SCHEDULE

| SYMBOL | MANUFACTURER/MODEL/DESCRIPTION | QTY | DETAIL |
|---|---|-----|--------|
|  | FX LUMINAIRE FB - LED - UPLIGHT (OR EQUAL) Aluminum Alloy, (FB) Flat Black, (PM) PostMount Lamp: 1LED, 2W, 2900K Accessories: N/A | 41 | |
|  | FX LUMINAIRE ZW-DN COMPACT WALL-MOUNTED DOWNLIGHT TO FRAME OR POST. Order code: ZW, Aluminum, (AL) Almond, Direct Mount Lamp: ZW-DN-1LED, 2W/2.4VA, 2700K, Beamspread: Flood | 10 | |
|  | FX LUMINAIRE CP - LED - STEP LIGHT Copper, (FB) Flat Black, In-wall, N/A | 19 | |

REFERENCE NOTES SCHEDULE

| SYMBOL | SITE LIGHTING DESCRIPTION | QTY | DETAIL |
|---|---|-----|--------|
|  | STAKE LOCATION OF LIGHT FIXTURES FOR REVIEW AND APPROVAL BY LANDSCAPE ARCHITECT PRIOR TO INSTALLATION | | |
|  | CENTER LIGHT ON STAIR RISER (TYP.) | | |
|  | DOWNLIGHTS TO BE ADDED OFF OF ALL POST TO PROPOSED AND EXISTING OVERHEAD STRUCTURES | | |
| NOTE: THIS PLAN IS FOR FIXTURE TYPE & LOCATION DESIGN INTENT ONLY. CONSULT ELECTRICAL ENGINEER OR CONTRACTOR. | | | |

