



1459 Grand Ave
Des Moines, IA 50309
P: 888-458-6646

ROY SUBDIVISION
FILING NO. 2
ID FUELING STATION AT 5880 S. ELK WAY, AURORA, CO 80016
BLACK TRUCK TURNING

FILING NO. Z
KUM & GO C-STORE AND FUELING STATION AT 5580 S. ELK WAY, AURORA, CO 80016

FIRE TRUCK TURNING

KG PROJECT TEAM: EES
RDM: RF
SDM: DG
CPM: BS

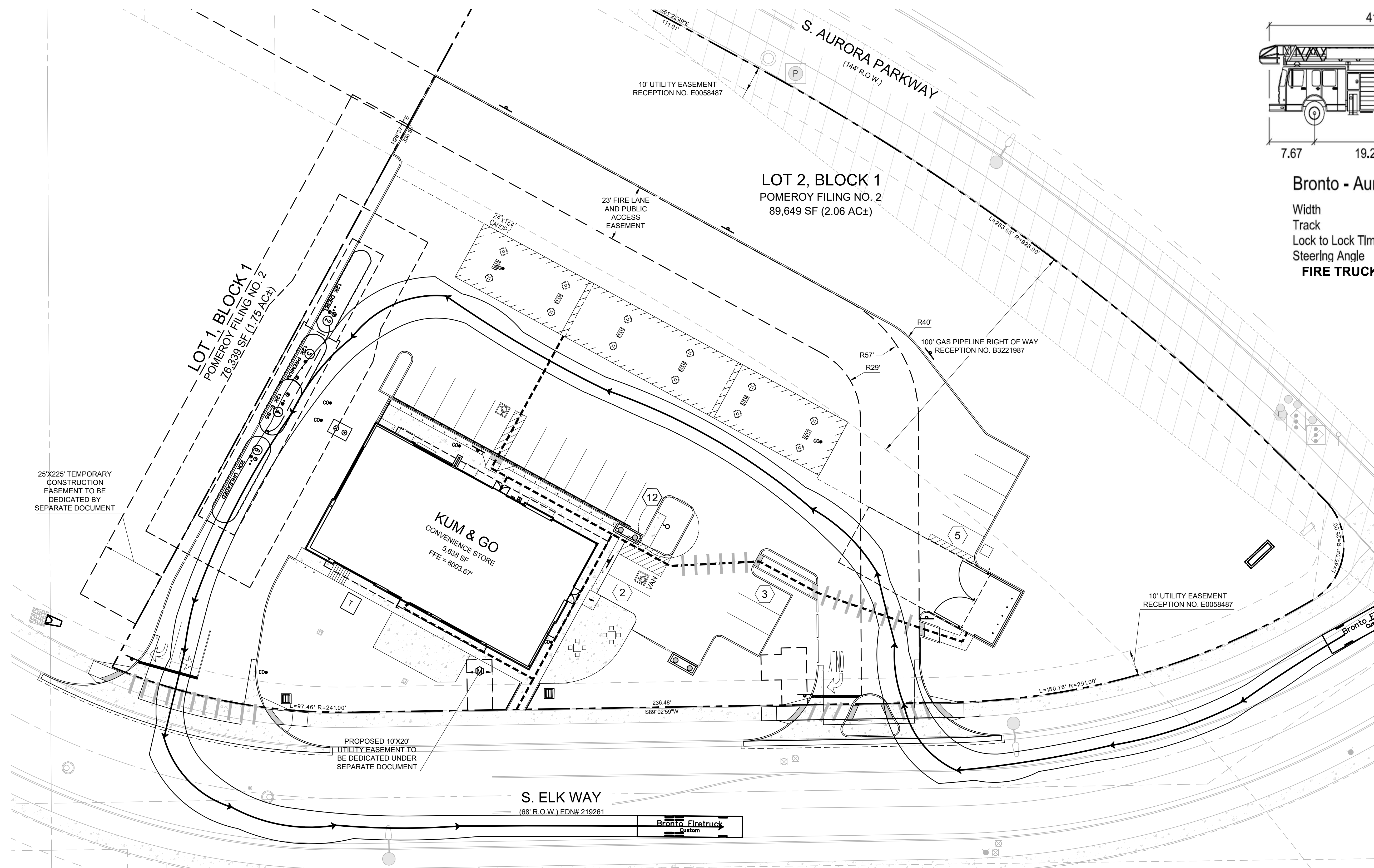
Δ	DATE	REVISION DESCRIPTION

REVISIONS

DATE: 04-09-2021

SHEET NUMBER:

EX-01



1-800-922-1987 or 811

ELEVATIONS ARE BASED UPON CITY OF AURORA BENCH MARK 556517SW002.
CITY DESCRIPTION: 3 INCH DIAMETER BRASS CAP IN CONCRETE IN FENCE
LINE FOR NORTH-SOUTH AND EAST-WEST BARBED WIRE FENCE, SOUTH WEST
CORNER OF C.O.A. OPEN SPACE. STAMPED CITY OF AURORA, T5S, R65W, 18/17
19/20 1981 LS 16419. CITY ELEVATION: 5954.427 (NAVD 1988).

CALL 3-BUSINESS DAYS (NOT INCLUDING INITIAL DAY OF CONTACT) IN ADVANCE BEFORE YOU DIG GRADE, OR EXCAVATE FOR THE MARKING OF UNDERGROUND MEMBER UTILITIES

Know what's below.
Call before you dig.