

PROJECT: DO MACRO UPGRADE

SITE CASCADE: DN52XC107

ADDRESS: 2851 S. PARKER ROAD
AURORA, CO 80014
ARAPAHOE COUNTY

LATITUDE: 39.510889° N / 39° 39' 51.940" N
LONGITUDE: 104.737361° W / 104° 51' 39.790" W

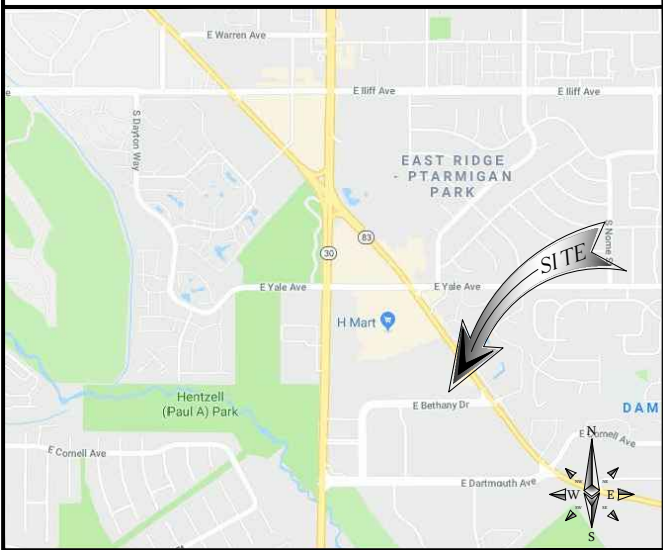
SITE TYPE: ROOFTOP



SITE INFORMATION

PROPERTY OWNER:	HANK BRUMLEY (303) 319-6645 ----- -----
APPLICANT:	SPRINT
LAT/LONG TYPE:	NAD-83
LATITUDE:	39.510889° N / 39° 39' 51.940" N
LONGITUDE:	104.737361° W / 104° 51' 39.790" W
ZONING JURISDICTION:	CITY OF AURORA
ZONING CLASSIFICATION:	STATE ASSESSED
CURRENT USE:	UNMANNED TELECOMMUNICATIONS FACILITY
ASSESSOR'S PARCEL NO.:	1973-35-2-16-002
PROPOSED USE:	UNMANNED TELECOMMUNICATIONS FACILITY
TYPE OF CONSTRUCTION:	V-B
OCCUPANCY GROUP:	U-2

AREA MAP



PROJECT DESCRIPTION

SPRINT PROPOSES TO MODIFY AN EXISTING WIRELESS INSTALLATION. THE SCOPE WILL CONSIST OF THE FOLLOWING:		
• REMOVE	(1)	EXISTING CLEARWIRE EQUIPMENT CABINET
• REMOVE	(3)	EXISTING CLEARWIRE RRU's
• REMOVE	(3)	EXISTING CLEARWIRE PANEL ANTENNAS
• REMOVE	(1)	EXISTING GPS ANTENNA
• REUSE	(3)	EXISTING MW ANTENNAS ONTO SPRINT NETWORK
• RELOCATE & REUSE	(1)	EXISTING INTERNAL CABINET EQUIPMENT
• INSTALL	(6)	NEW SPRINT PANEL ANTENNAS
• INSTALL	(3)	NEW SPRINT 800MHz RRU's
• INSTALL	(3)	NEW SPRINT 1900MHz RRU's
• INSTALL	(3)	NEW SPRINT 2500MHz RRU's
• INSTALL	(1)	NEW SPRINT EXTERNAL DO CABINET W/ 4 BATTERIES
• INSTALL	(3)	NEW HYBRID FIBER CABLES
• INSTALL	(1)	NEW GPS ANTENNA
• INSTALL	(1)	NEW SPRINT FIBER DISTRIBUTION CABINET ON NEW H-FRAME
• INSTALL	(1)	NEW SPRINT PPC CABINET
• INSTALL	(1)	NEW SPRINT 10' X 10' EQUIPMENT PLATFORM
• INSTALL	(3)	NEW SPRINT OPTICAL JUNCTION
• INSTALL	(3)	NEW SPRINT POWER JUNCTION

DRAWING INDEX

SHEET NO:	SHEET TITLE
T-1	TITLE SHEET
GN-1	GENERAL NOTES
GN-2	GENERAL NOTES
A-1	SITE PLAN
A-2	EQUIPMENT LAYOUT
A-3	ANTENNA LAYOUT
A-4	ELEVATIONS
A-5	ELEVATIONS
A-6	COLOR CODING
D-1	EQUIPMENT DETAILS
D-2	EQUIPMENT DETAILS
D-3	EQUIPMENT DETAILS
D-4	EQUIPMENT DETAILS
E-1	GENERAL ELECTRICAL NOTES
E-2	PANEL SCHEDULE
E-3	ANTENNA GROUNDING PLAN AND DIAGRAM
E-4	GROUNDING DETAILS
RF-1	RADIO FREQUENCY DATA SHEET

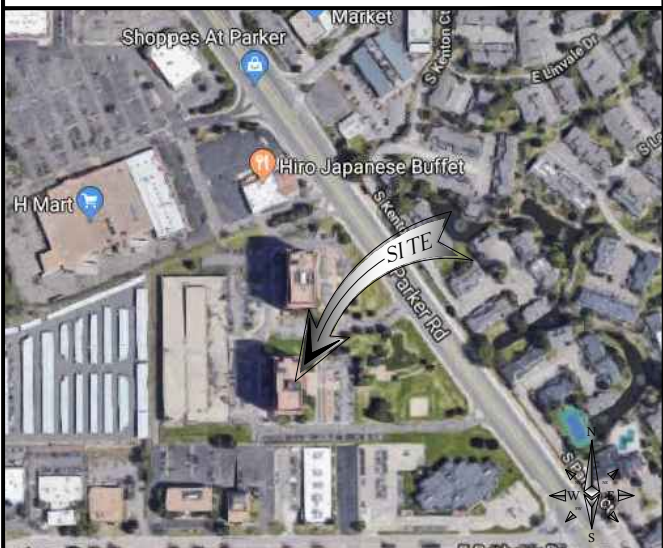
PROJECT TEAM

REAL ESTATE MANAGER: CONTACT: CHRISTINE POULIGNOT REAL ESTATE MANAGER - COLORADO SPRINT NEXTEL CORPORATION C/O CHRISTINE POULIGNOT MAILSTOP: COENGJ0201 333 INVERNESS DRIVE SOUTH ENGLEWOOD, CO 80112 PH: (720) 328-7993 EMAIL: christine.poulignot@sprint.com	ENGINEER: M.SQUARED WIRELESS 1387 CALLE AVANZADO SAN CLEMENTE, CA 92673 CONTACT: MICHAEL MONTELLO EMAIL: michael@mquaredwireless.com
SITE ACQUISITION M SQUARED WIRELESS CONTACT: MATTHEW BABB 1387 CALLE AVANZADO SAN CLEMENTE, CA 92673 PH: (619) 992-5561 EMAIL: matthewbabb61@gmail.com	RF ENGINEER: CONTACT: NEERAJ BERI PH: (440) 222-8729 EMAIL: neeraj.beri@sprint.com
	CONSTRUCTION MANAGER: CONTACT: BRANDON WHINERY PH: (303) 505-5750 EMAIL: brandon.whinery@sprint.com

GENERAL NOTES

THE FACILITY IS UNMANNED AND NOT FOR HUMAN HABITATION. HANDICAPPED ACCESS REQUIREMENTS ARE NOT REQUIRED IN ACCORDANCE WITH THE 2015 INTERNATIONAL BUILDING CODE. A TECHNICIAN WILL VISIT THE SITE AS REQUIRED FOR ROUTINE MAINTENANCE. THE PROJECT WILL NOT RESULT IN ANY SIGNIFICANT DISTURBANCE OR EFFECT ON DRAINAGE; NO SANITARY SEWER SERVICE, POTABLE WATER, OR TRASH DISPOSAL IS REQUIRED AND NO COMMERCIAL SIGNAGE IS NEW.

LOCATION MAP



APPLICABLE CODES

ALL WORK AND MATERIALS SHALL BE PERFORMED AND INSTALLED IN ACCORDANCE WITH THE CURRENT EDITIONS OF THE FOLLOWING CODES AS ADOPTED BY THE LOCAL GOVERNING AUTHORITIES. NOTHING IN THESE PLANS IS TO BE CONSTRUED TO PERMIT WORK NOT CONFORMING TO THESE CODES:	
• 2015 INTERNATIONAL BUILDING CODE	
• 2014 NATIONAL ELECTRICAL CODE	
• LOCAL BUILDING CODES	
• CITY/COUNTY ORDINANCES	

APPROVALS

THE FOLLOWING PARTIES HEREBY APPROVE AND ACCEPT THESE DOCUMENTS & AUTHORIZE THE SUBCONTRACTOR TO PROCEED WITH THE CONSTRUCTION DESCRIBED HEREIN. ALL DOCUMENTS ARE SUBJECT TO REVIEW BY THE LOCAL BUILDING DEPARTMENT & MAY IMPOSE CHANGES OR MODIFICATIONS.	
SPRINT RF ENGINEER:	DATE:
SPRINT OPERATIONS:	DATE:
SITE ACQUISITION:	DATE:
CONSTRUCTION MANAGER:	DATE:
PROPERTY OWNER:	DATE:
ZONING:	DATE:
PROJECT MANAGER:	DATE:

DO NOT SCALE DRAWINGS

SUBCONTRACTOR SHALL VERIFY ALL PLANS, EXISTING DIMENSIONS & FIELD CONDITIONS ON THE JOB SITE & SHALL IMMEDIATELY NOTIFY THE ENGINEER IN WRITING OF ANY DISCREPANCIES BEFORE PROCEEDING WITH THE WORK OR BE RESPONSIBLE FOR SAME.

C	08/09/2018	90% CD'S - REVISED
B	07/13/2018	90% CD'S - REVISED
A	04/09/2018	90% CD'S FOR REVIEW
REV	DATE	DESCRIPTION

IT IS A VIOLATION OF LAW FOR ANY PERSON, UNLESS THEY ARE ACTING UNDER THE DIRECTION OF A LICENSED PROFESSIONAL ENGINEER, TO ALTER THIS DOCUMENT.

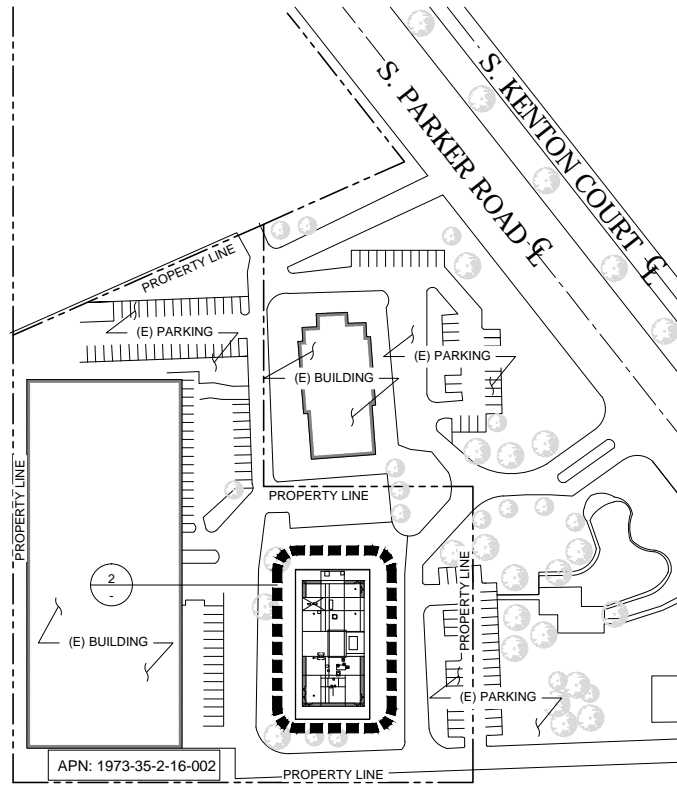
DN52XC107
2851 S. PARKER ROAD
AURORA, CO 80014
ROOFTOP

SHEET TITLE
TITLE SHEET

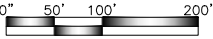
SHEET NUMBER
T-1

NOTES:

1. THE WIRELESS COMMUNICATION FACILITY COMPLIES WITH FEDERAL STANDARDS FOR RADIO FREQUENCY IN ACCORDANCE WITH THE TELECOMMUNICATION ACT OF 1996 AND SUBSEQUENT AMENDMENTS AND ANY OTHER REQUIREMENTS IMPOSED BY STATE OR FEDERAL REGULATORY AGENCIES.
2. NO EXISTING PARKING STALLS ARE BEING ADDED OR REMOVED AS PART OF THE NEW INSTALLATION.
3. THESE DRAWINGS WERE PRODUCED WITHOUT THE BENEFIT OF A CURRENT LAND SURVEY. ALL PROPERTY LINES, EASEMENTS, SETBACKS, AND EXISTING CONDITIONS ARE APPROXIMATE AND SHALL BE VERIFIED PRIOR TO START OF CONSTRUCTION.
4. NO GRADING WORK IS INCLUDED IN THIS SCOPE OF WORK ON THIS PAGE

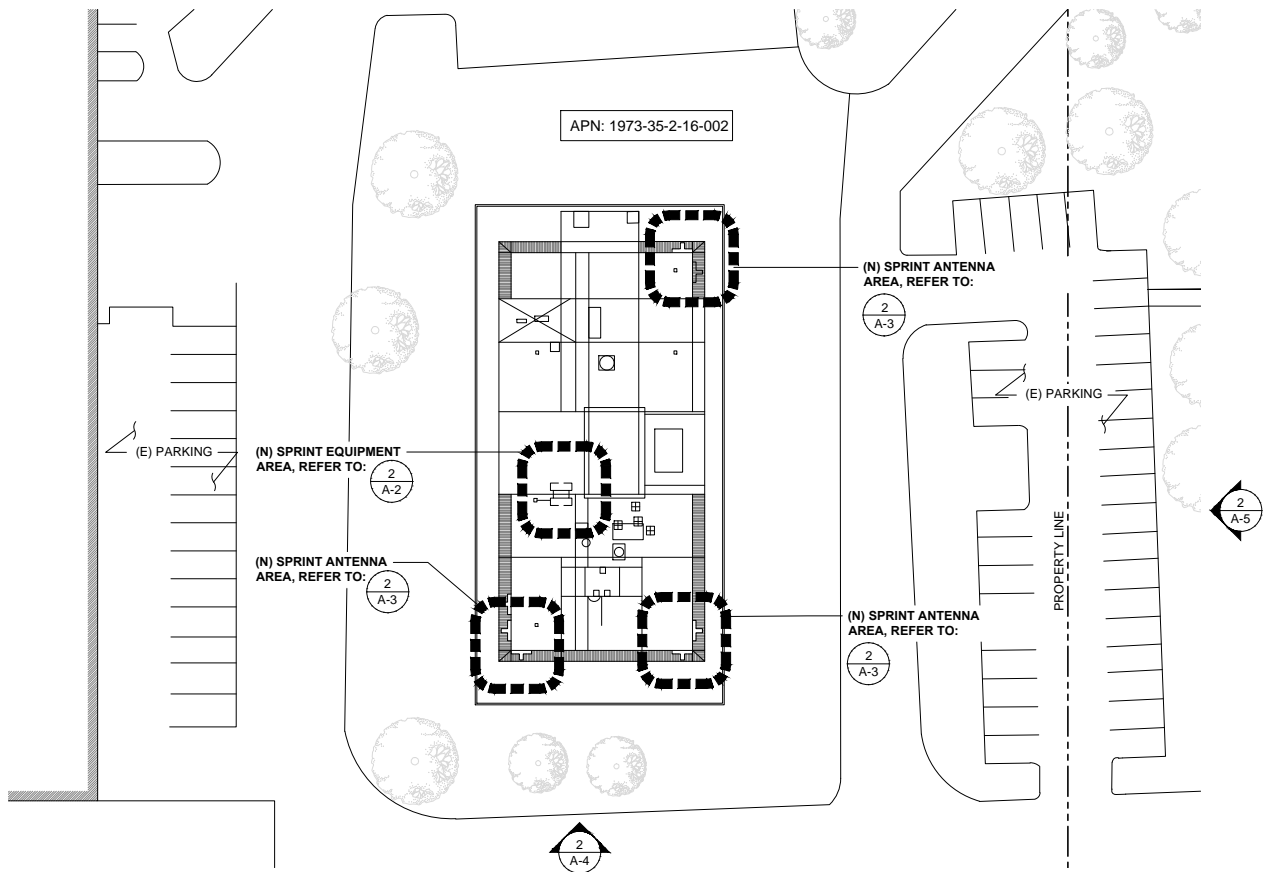


24"x36" SCALE: 1" = 100'-0"
11"x17" SCALE: 1" = 200'-0"

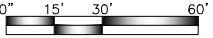


1

SITE PLAN



24"x36" SCALE: 1" = 30'-0"
11"x17" SCALE: 1" = 60'-0"



2

ENLARGED ROOF PLAN



1387 CALLE AVANZADO
SAN CLEMENTE CA 95073 (949) 391-0804

DRAWN BY: JC

CHECKED BY: MM

REV	DATE	DESCRIPTION
C	08/09/2018	90% CD'S - REVISED
B	07/13/2018	90% CD'S - REVISED
A	04/09/2018	90% CD'S FOR REVIEW

IT IS A VIOLATION OF LAW FOR ANY PERSON, UNLESS THEY ARE ACTING UNDER THE DIRECTION OF A LICENSED PROFESSIONAL ENGINEER, TO ALTER THIS DOCUMENT.

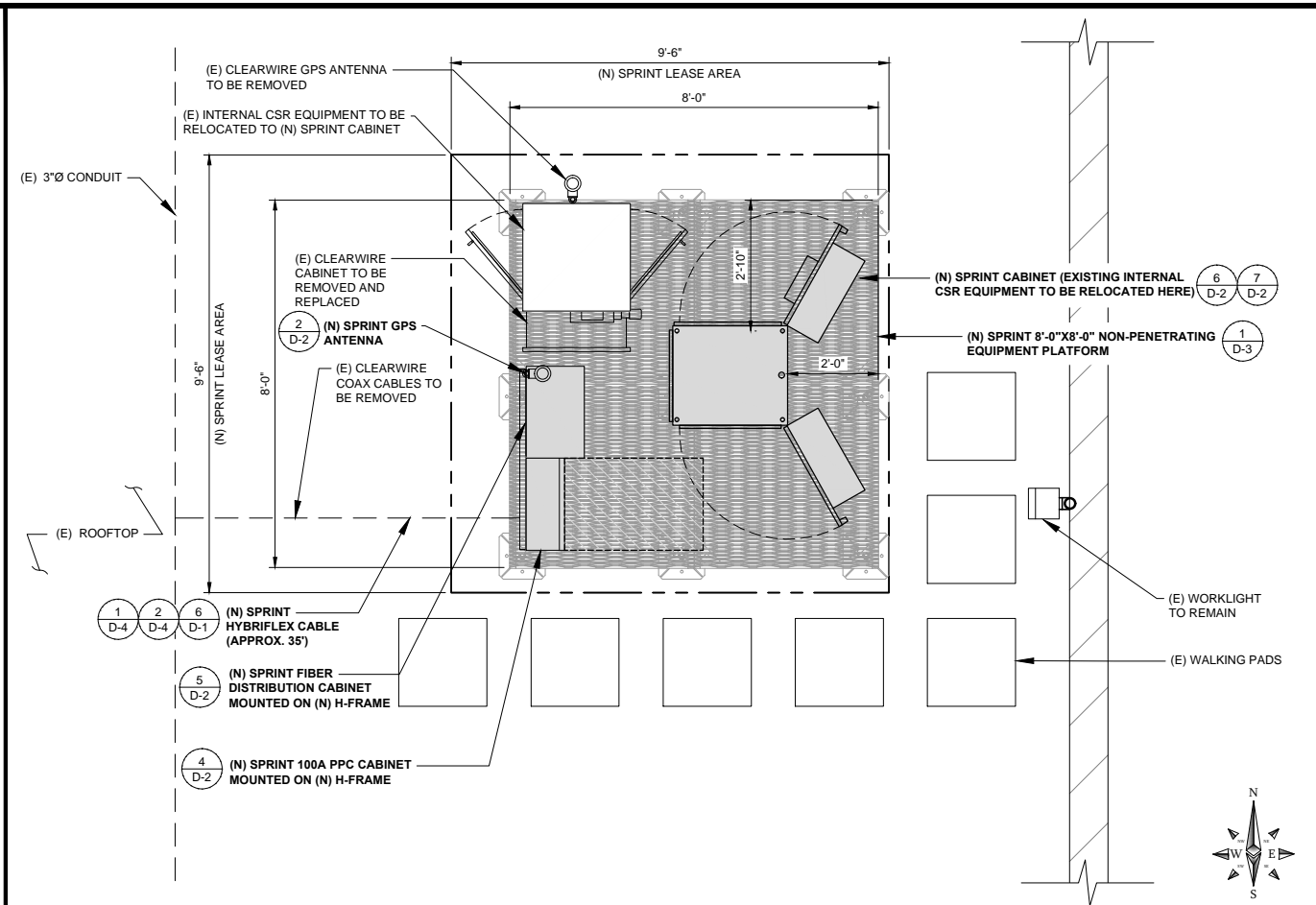
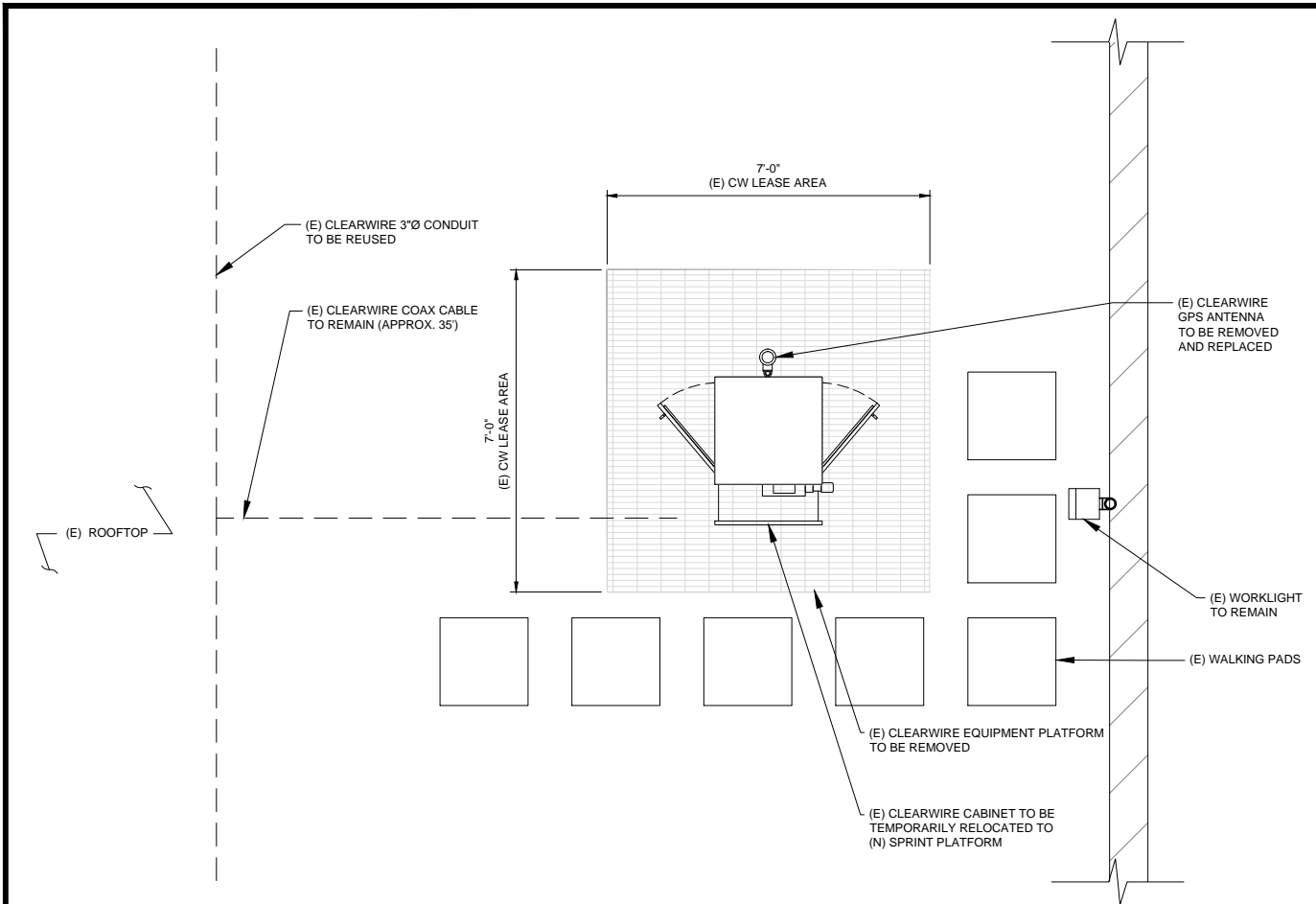
DN52XC107
2851 S. PARKER ROAD
AURORA, CO 80014
ROOFTOP

SHEET TITLE

SITE PLAN

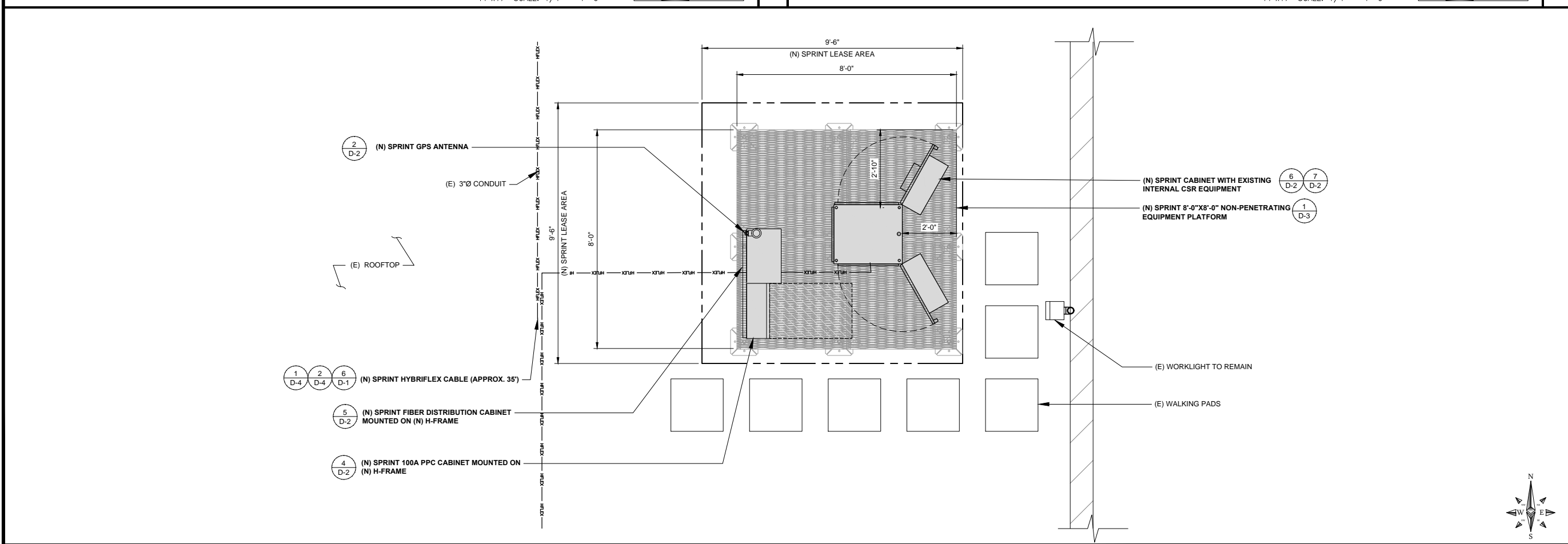
SHEET NUMBER

A-1



EXISTING EQUIPMENT LAYOUT

INTERM PLAN



PROPOSED EQUIPMENT LAYOUT



DRAWN BY: JC
CHECKED BY: MM

REV	DATE	DESCRIPTION
C	08/09/2018	90% CD'S - REVISED
B	07/13/2018	90% CD'S - REVISED
A	04/09/2018	90% CD'S FOR REVIEW

IT IS A VIOLATION OF LAW FOR ANY PERSON, UNLESS THEY ARE ACTING UNDER THE DIRECTION OF A LICENSED PROFESSIONAL ENGINEER, TO ALTER THIS DOCUMENT.

DN52XC107
2851 S. PARKER ROAD
AURORA, CO 80014
ROOFTOP

SHEET TITLE
EQUIPMENT LAYOUT

SHEET NUMBER
A-2

- NOTE:
1. M. SQUARED ENGINEERS ACCEPTS NO LIABILITY FOR THE STRUCTURAL CAPACITY OF THE TOWER STRUCTURE, MOUNTS, ANTENNAS, CABLES OR ANY OTHER APPURTENANCE ON THE TOWER. THE CONTRACTOR AND SUBCONTRACTOR SHALL COORDINATE WITH AND COMPLY WITH THE PROVISIONS OF THE STRUCTURAL ANALYSIS PREPARED FOR THIS SITE AND PROJECT PRIOR TO THE INSTALLATION OF ANTENNAS AND CABLE ON THE TOWER. IMMEDIATELY REPORT ANY DISCREPANCIES BETWEEN THE CONSTRUCTION DRAWINGS AND THE STRUCTURAL ANALYSIS TO SPRINT. REFER TO THE STRUCTURAL ANALYSIS AND/OR STRUCTURAL LETTER FOR THE APPROVAL OF ALL MODIFICATIONS TO AND ADDING EQUIPMENT OF NEW TOWER APPURTENANCES.
 2. REFER TO ADDITIONAL DRAWINGS SPECIFIC TO TOWER REINFORCEMENT FOR THIS SITE SHOULD THERE BE A REQUIREMENT FOR ANY TOWER REINFORCEMENT.
 3. REFER TO STRUCTURAL ANALYSIS FOR COAXIAL AND OTHER CABLE SUPPORT AND CONFIGURATION DETAIL.
 4. REFER TO STRUCTURAL ANALYSIS FOR ALL CARRIERS APPURTENANCES AS THEY MAY NOT BE SHOWN IN ELEVATION DETAIL.

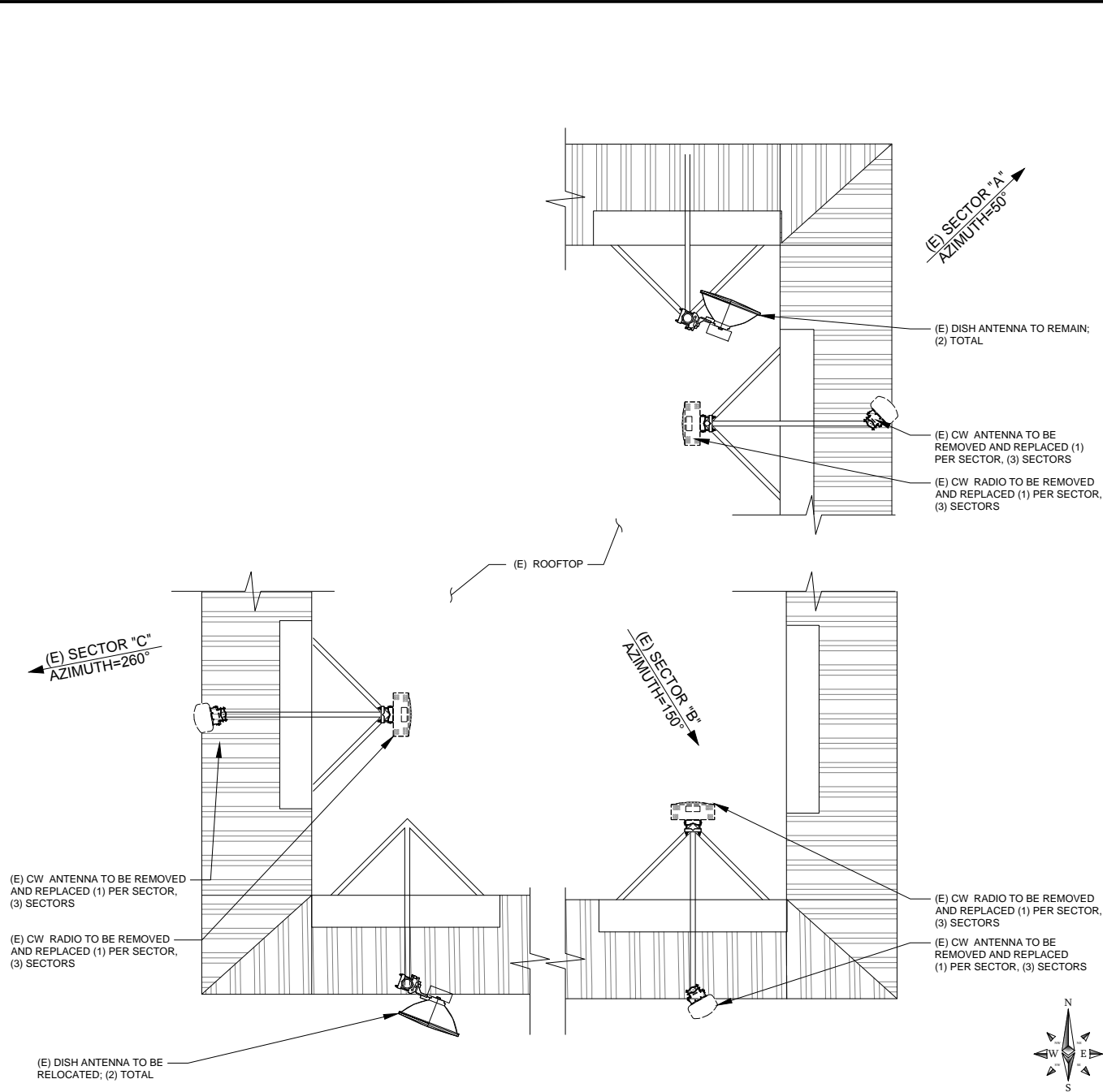
- NOTES TO CONTRACTOR:
1. CONTRACTOR IS TO REFER TO SPRINT'S MOST CURRENT RADIO FREQUENCY DATA SHEET (RFDS) PRIOR TO CONSTRUCTION
 2. CABLE LENGTHS WERE DETERMINED BASED ON VISUAL INSPECTION DURING SITE-WALK. CONTRACTOR TO VERIFY ACTUAL LENGTH DURING PRE-CONSTRUCTION WALK
 3. CONTRACTOR TO VERIFY PORTS HAVE SUFFICIENT ROOM

- NOTE:
1. (E) ANTENNA AZIMUTHS ARE ESTIMATED AND ARE TO BE VERIFIED BY RF.
 2. ALL NEW FIBER/CABLE RUNS TO UTILIZE (E) CONDUIT PATHS PREVIOUSLY ESTABLISHED WITHIN A PRE-APPROVED ACCESS/UTILITY ROUTE.

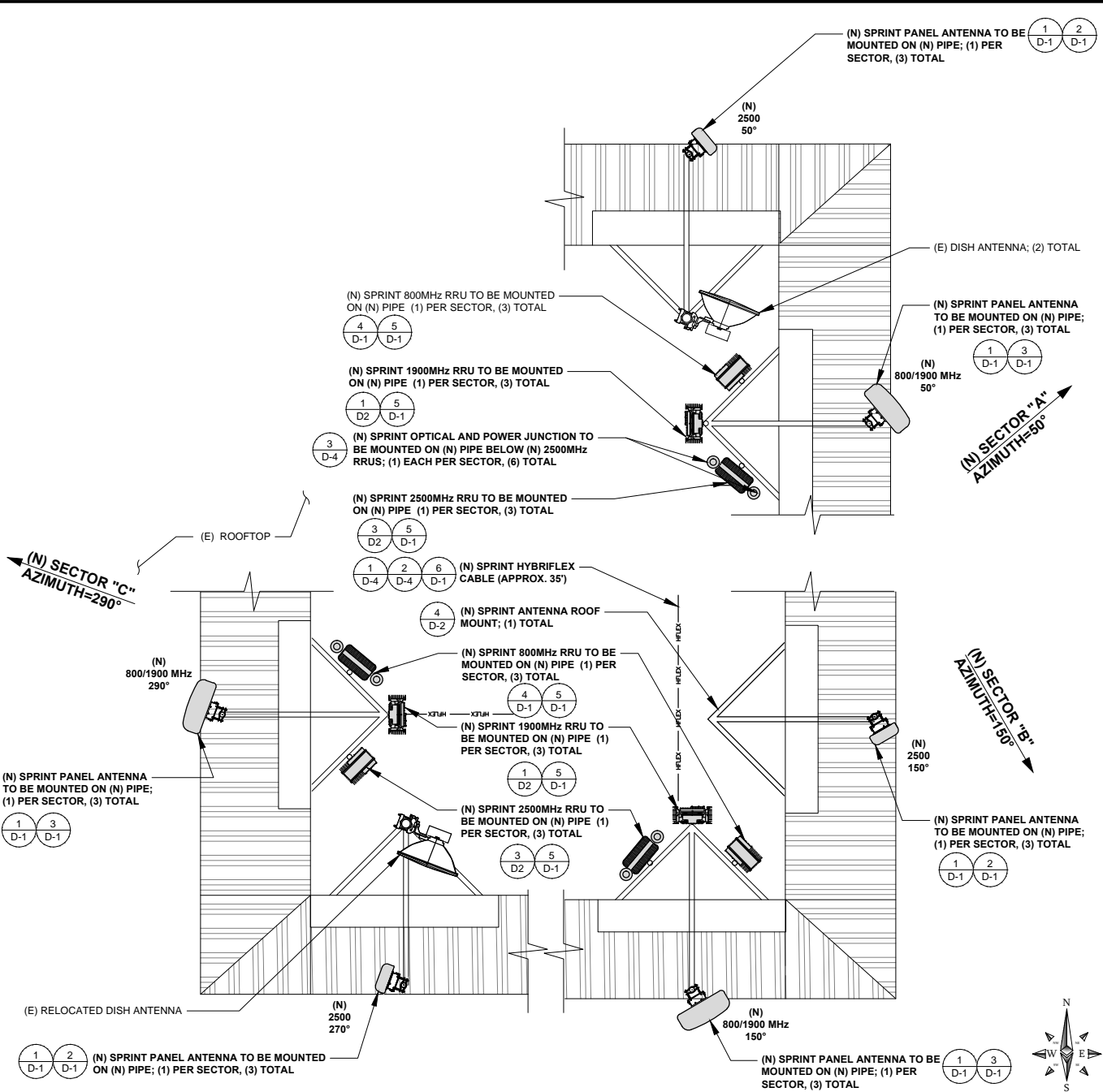
	ANTENNA POSITION	REMOTE RADIO UNITS		DC CABLES	
		RRUS MAKE AND MODEL	RRUS COUNT	LENGTH	AWG
SECTOR A	1	(N) 2500MHz RRU	1	160'	—
	2	(N) 800MHz RRU	1	160'	—
	3	(N)1900MHz RRU	1	160'	—
	4	—	—	—	—
SECTOR B	1	(N) 2500MHz RRU	1	160'	—
	2	(N) 800MHz RRU	1	160'	—
	3	(N)1900MHz RRU	1	160'	—
	4	—	—	—	—
SECTOR C	1	(N) 2500MHz RRU	1	160'	—
	2	(N) 800MHz RRU	1	160'	—
	3	(N)1900MHz RRU	1	160'	—
	4	—	—	—	—

NEW OPTIMAL ANTENNA REQUIREMENTS (VERIFY WITH CURRENT RFDS)			ANTENNA MAKE AND MODEL		RAD CENTER		AZIMUTH		TRANSMISSION LINE		
ANTENNA POSITION	TECHNOLOGY	ANTENNA COUNT	EXISTING	NEW	EXISTING	NEW	EXISTING	NEW	CABLE LENGTH	CABLE QTY.	FEEDER TYPE
SECTOR A	1	2500 MHZ	1	(N) TTTT65AP-1XR	—	179'-0"	—	50°	±160'	1	(N) HFC
	2	—	1	P65-18-XXW2-R	—	179'-0"	—	50°	±160'	—	—
	3	800/1900 MHZ	1	(N) APXB8LL15X 43-C120	—	179'-0"	—	50°	±160'	8/1	JUMPERS/RET
	4	—	—	—	—	—	—	—	—	—	—
SECTOR B	1	2500-MHZ	1	(N) TTTT65AP-1XR	—	179'-0"	—	150°	±120'	1	(N) HFC
	2	—	1	P65-18-XXW2-R	—	179'-0"	—	150°	±120'	—	—
	3	800/1900 MHZ	1	(N) APXB8LL15X 43-C120	—	179'-0"	—	150°	±120'	8/1	JUMPERS/RET
	4	—	—	—	—	—	—	—	—	—	—
SECTOR C	1	2500-MHZ	1	(N) TTTT65AP-1XR	—	179'-0"	—	270°	±60'	1	(N) HFC
	2	—	1	P65-18-XXW2-R	—	179'-0"	—	260°	±60'	—	—
	3	800/1900 MHZ	1	(N) APXB8LL15X 43-C120	—	179'-0"	—	290°	±60'	8/1	JUMPERS/RET
	4	—	—	—	—	—	—	—	—	—	—

NOTES



EXISTING ANTENNA LAYOUT



PROPOSED ANTENNA LAYOUT



M SQUARED
WIRELESS

1387 CALLE AVANZADO
SAN CLEMENTE CA 95063 (408) 301-0884

DRAWN BY: JC

CHECKED BY: MM

REV	DATE	DESCRIPTION
C	08/09/2018	90% CD'S - REVISED
B	07/13/2018	90% CD'S - REVISED
A	04/09/2018	90% CD'S FOR REVIEW

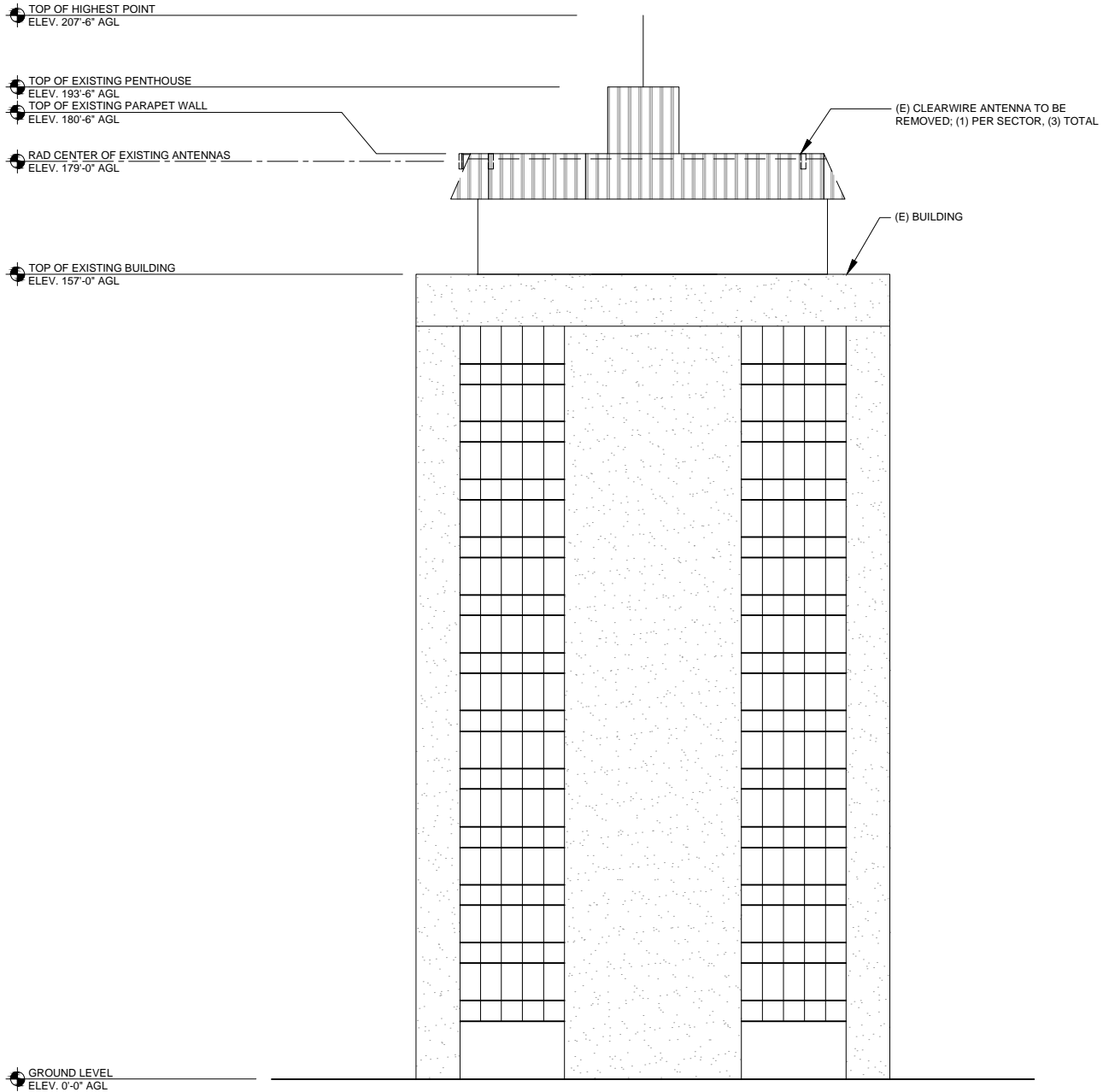
IT IS A VIOLATION OF LAW FOR ANY PERSON, UNLESS THEY ARE ACTING UNDER THE DIRECTION OF A LICENSED PROFESSIONAL ENGINEER, TO ALTER THIS DOCUMENT.

DN52XC107
2851 S. PARKER ROAD
AURORA, CO 80014
ROOFTOP

SHEET TITLE
ANTENNA LAYOUT

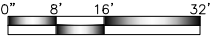
SHEET NUMBER
A-3

NOTES TO CONTRACTOR:
1. ALL RRU'S ARE CONCEALED BEHIND EXISTING BUILDING PARAPET AND NOT VISIBLE.



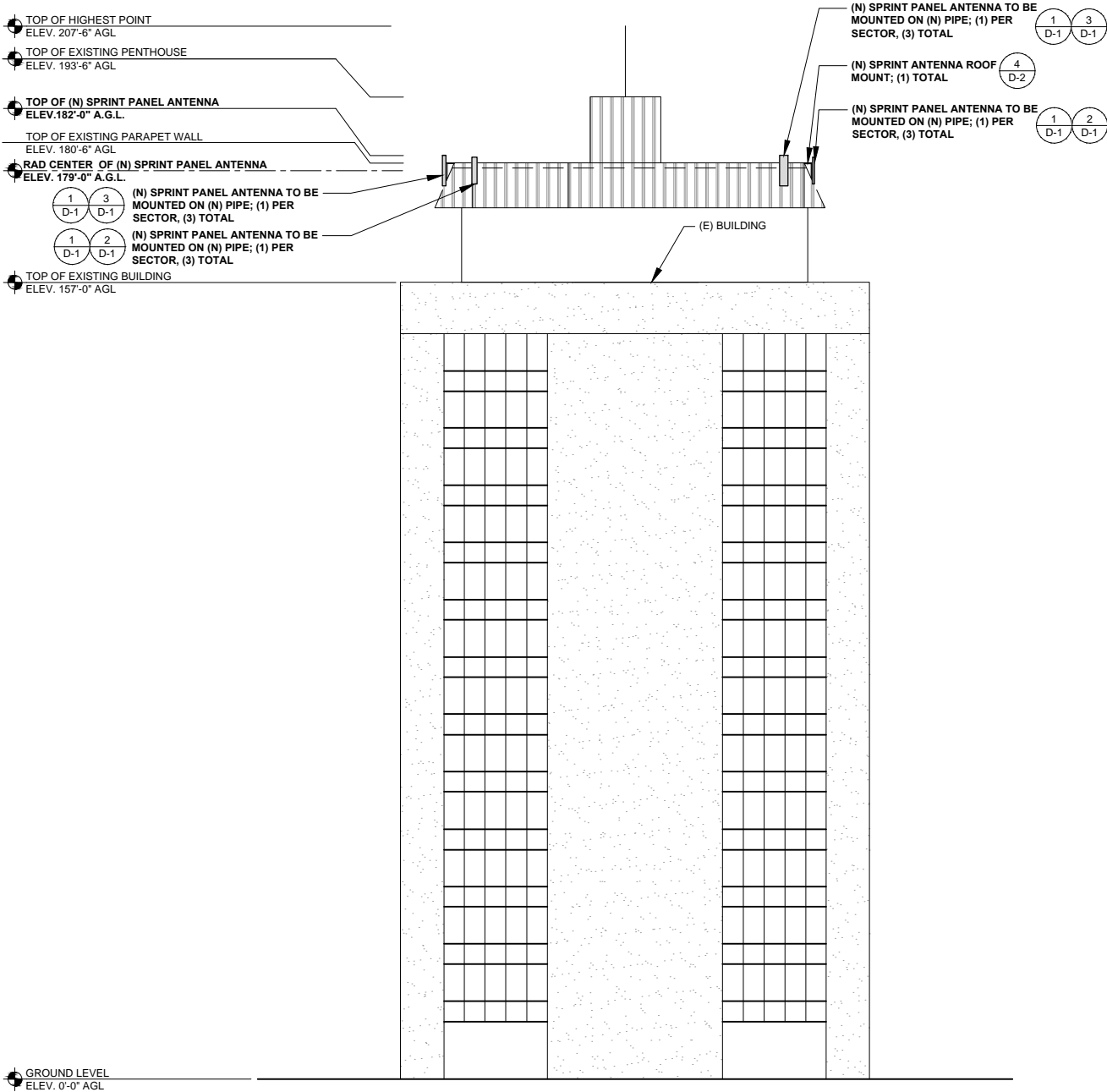
EXISTING SOUTH ELEVATION

24"x36" SCALE: 1/16" = 1'-0"
11"x17" SCALE: 1/32" = 1'-0"



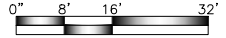
1

NOTES TO CONTRACTOR:
1. ALL RRU'S ARE CONCEALED BEHIND EXISTING BUILDING PARAPET AND NOT VISIBLE.



PROPOSED SOUTH ELEVATION

24"x36" SCALE: 1/16" = 1'-0"
11"x17" SCALE: 1/32" = 1'-0"



2



DRAWN BY: JC
CHECKED BY: MM

REV	DATE	DESCRIPTION
C	08/09/2018	90% CD'S - REVISED
B	07/13/2018	90% CD'S - REVISED
A	04/09/2018	90% CD'S FOR REVIEW

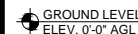
IT IS A VIOLATION OF LAW FOR ANY PERSON, UNLESS THEY ARE ACTING UNDER THE DIRECTION OF A LICENSED PROFESSIONAL ENGINEER, TO ALTER THIS DOCUMENT.

DN52XC107
2851 S. PARKER ROAD
AURORA, CO 80014
ROOFTOP

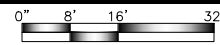
SHEET TITLE
ELEVATIONS

SHEET NUMBER
A-4

1. ALL RRU'S ARE CONCEALED BEHIND EXISTING BUILDING PARAPET AND NOT VISIBLE.



24"x36" SCALE: 1/16" = 1'-0"
11"x17" SCALE: 1/32" = 1'-0"

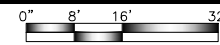


1

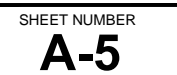
1. ALL RRU'S ARE CONCEALED BEHIND EXISTING BUILDING PARAPET AND NOT VISIBLE.



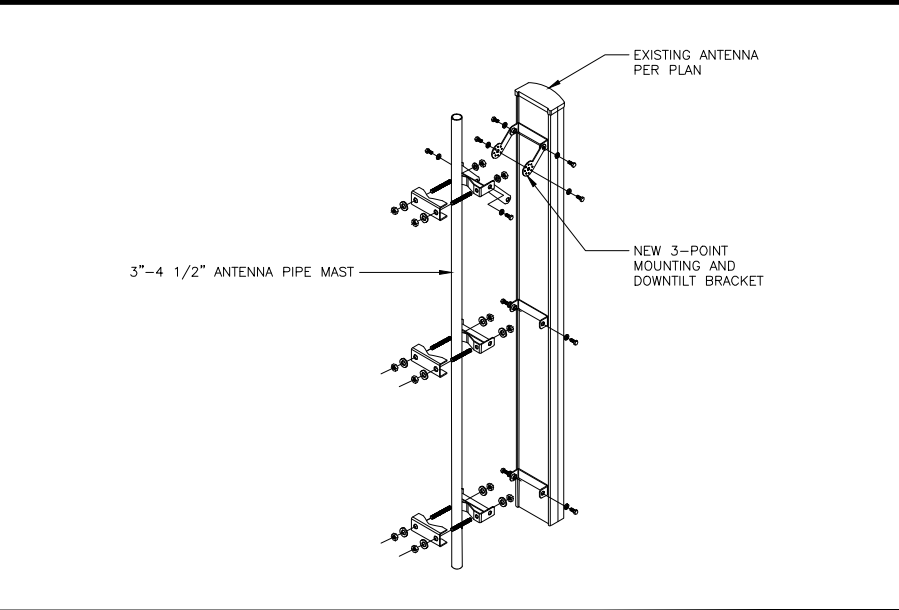
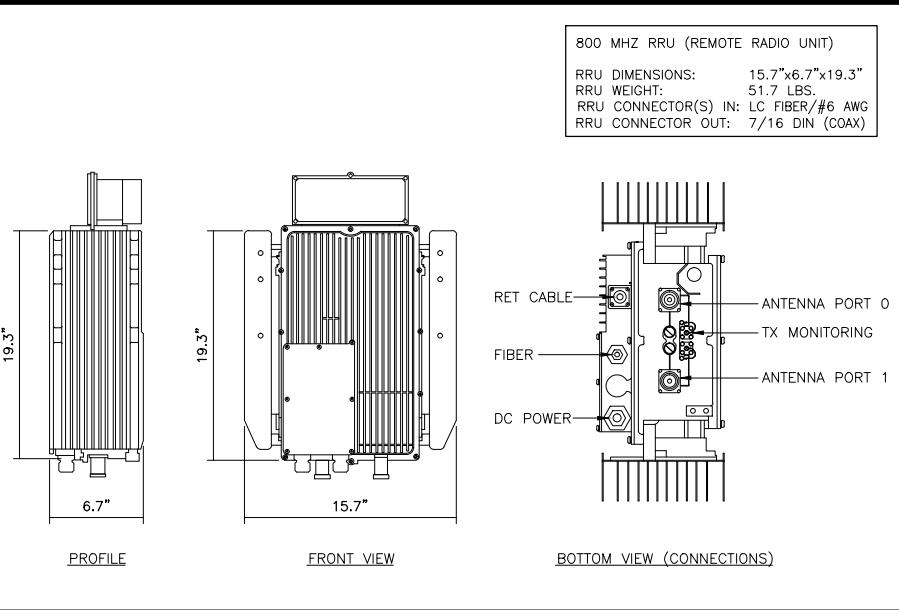
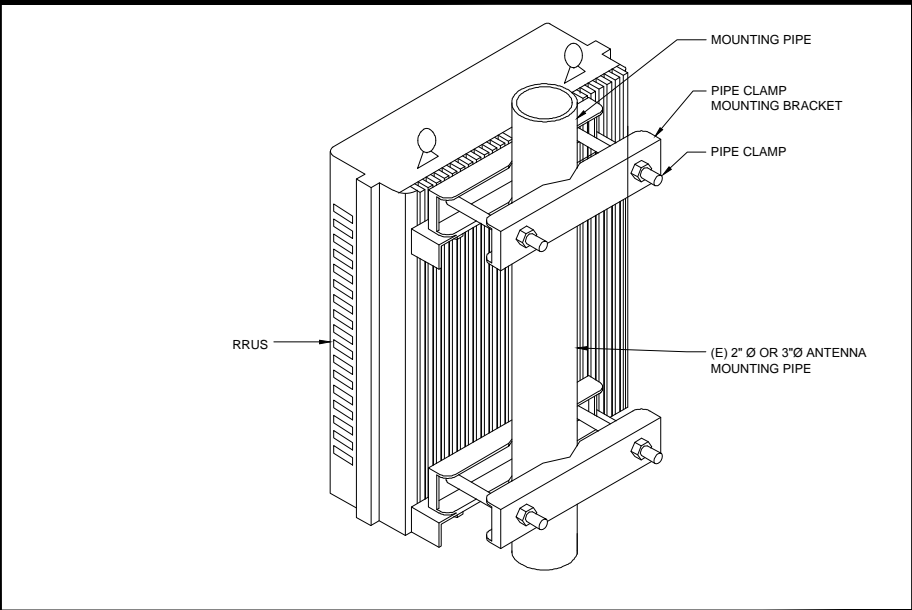
24"x36" SCALE: 1/16" = 1'-0"
11"x17" SCALE: 1/32" = 1'-0"



2



IT IS A VIOLATION OF LAW FOR ANY PERSON, UNLESS THEY
ARE ACTING UNDER THE DIRECTION OF A LICENSED
PROFESSIONAL ENGINEER, TO ALTER THIS DOCUMENT.



(N) AND (E) RRUS MOUNTING DETAIL

24"x36" SCALE: NTS
11"x17" SCALE: NTS

5

(N) 800MHz RRU

24"x36" SCALE: NTS
11"x17" SCALE: NTS

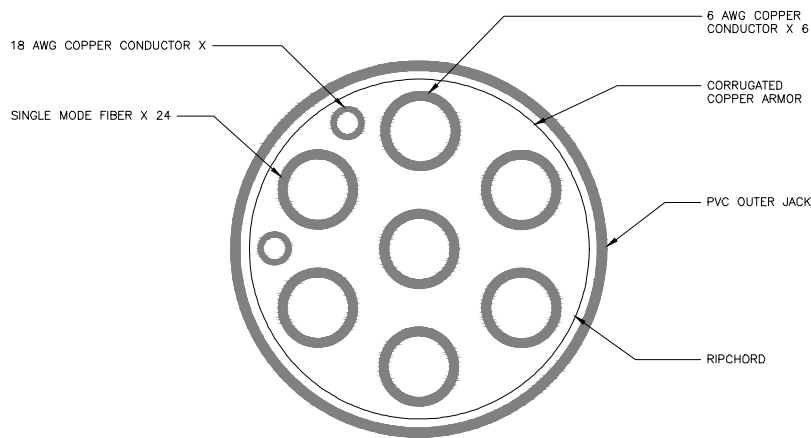
4

ANTENNA MOUNTING

24"x36" SCALE: NTS
11"x17" SCALE: NTS

1

CABLE TYPE	NUMBER, SIZE (AWG)	6/C #6 + 2/C #18
VOLTAGE		600
OUTER JACKET		PVC
SHIELDING		CORRUGATED COPPER
MAX SHIELDING RESISTANCE (OHM/FT @ 20 C)		0.0035
DRAIN		N/A
RIPCHORD		KEVLAR
DC CONDUCTOR MATERIAL		COPPER
DC CONDUCTOR SIZE (AWG)		6
MAX DC RESISTANCE (OHM/1000FT)		0.411 @ 20° C
COLOR CODE		BLACK/RED
ALARM CONDUCTOR MATERIAL		COPPER
ALARM CONDUCTOR SIZE (AWG)		18
MAX DC RESISTANCE (OHM/1000FT)		6.7
COLOR CODE		TBD
FIBER CABLES		SM
OUTER DIAMETER (IN) – NOMINAL		1.24
WEIGHT (LB/FT)		1.05
MINIMUM BEND RADIUS (IN)		15
BEND MOMENT (LB/IN)		TBD
TENSIL STRENGTH (LB)		325
CRUST RESISTANCE, FOTP-41 (N/MM)		22
STRENGTH MEMBER		NO
OPERATING TEMPERATURE RANGE (LOW)		-40° C
OPERATING TEMPERATURE RANGE (LOW)		+80° C
FIBER TYPE		LOW WATER PEAK SINGLE MODE LOOSE TUBE
FIBER STRAND COMPLIANCE		ITU-T REC. G.652.D, G657.A2
FIBER COATING DIAMETER (UM)		.242 +/- 0.007MM 0.9+/- 0.005MM
FIBER COUNT		24
NUMBER OF FIBER SUBUNITS		.1
FIBER COUNT EACH UNITS		24
FIBER COUNT JACKETS		FR JACKET
MAX ATTENUATION, 1310 NM (DB/KM)		LESS THAN EQUA 0.5
MAX ATTENUATION, 1550 NM (DB/KM)		LESS THAN EQUA 0.5



NOTE: CABLE CROSS-SECTION NOT DRAWN TO SCALE

(N) HYBRID CABLE SPECIFICATIONS

24"x36" SCALE: NTS
11"x17" SCALE: NTS

6

(N) PANEL ANTENNA

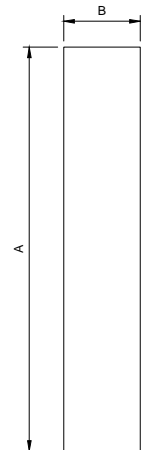
24"x36" SCALE: NTS
11"x17" SCALE: NTS

3

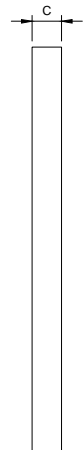
MANUFACTURER:		COMMSCOPE	
MODEL NO.:		TTTT65AP-1XR	
DIMENSIONS:		CONNECTOR TYPE:	TOTAL WEIGHT :
A	63.4	(8)4.3-10"DIN(FEMALE)	33.3
B	12	CONNECTOR LOCATION:	
C	4.5	BOTTOM	



TOP VIEW



FRONT VIEW



SIDE VIEW

5 (N) PANEL ANTENNA

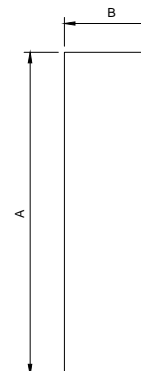
24"x36" SCALE: NTS
11"x17" SCALE: NTS

2

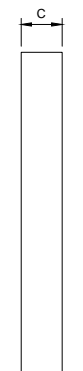
MANUFACTURER:		RFS	
MODEL NO.:		APXVBBLL15X_43-C-I20	
DIMENSIONS:		CONNECTOR TYPE:	TOTAL WEIGHT :
A	66.70"	(8)4.3-10"DIN(FEMALE)	75 LBS
B	19.60"	CONNECTOR LOCATION:	
C	8.50"	BOTTOM	



TOP VIEW



FRONT VIEW



SIDE VIEW

(N) PANEL ANTENNA

24"x36" SCALE: NTS
11"x17" SCALE: NTS

3

Sprint

M SQUARE
WIRELESS
1387 CALLE AVANZADO
SAN CLEMENTE CA 95073 (408) 301-0884

DRAWN BY: JC

CHECKED BY: MM

C 08/09/2018 90% CD'S - REVISED

B 07/13/2018 90% CD'S - REVISED

A 04/09/2018 90% CD'S FOR REVIEW

REV DATE DESCRIPTION

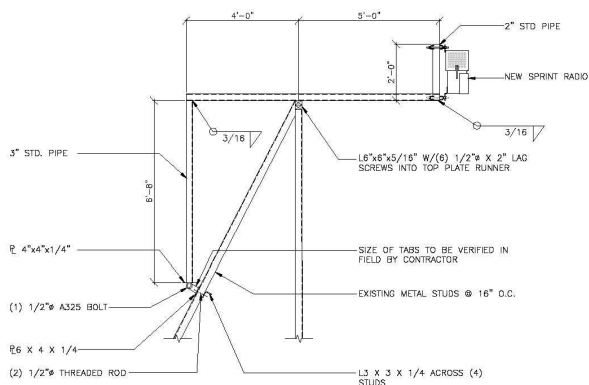
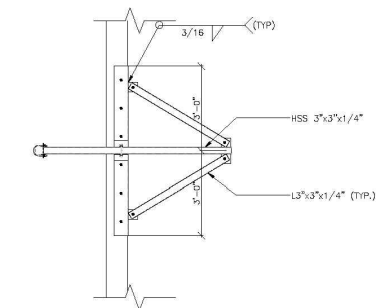
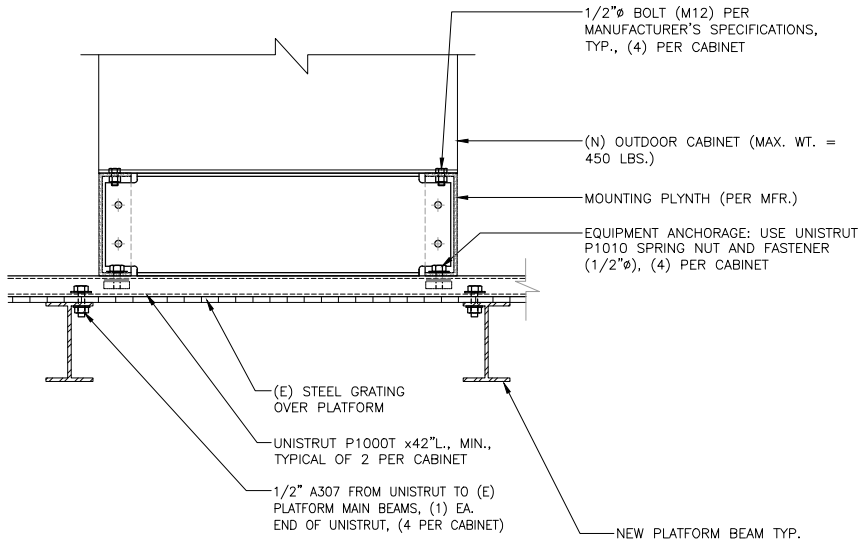
IT IS A VIOLATION OF LAW FOR ANY PERSON, UNLESS THEY ARE ACTING UNDER THE DIRECTION OF A LICENSED PROFESSIONAL ENGINEER, TO ALTER THIS DOCUMENT.

DN52XC107
2851 S. PARKER ROAD
AURORA, CO 80014
ROOFTOP

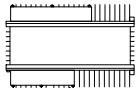
SHEET TITLE
EQUIPMENT DETAILS

SHEET NUMBER
D-1

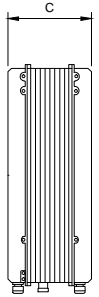
NOTE:
ALL TIMBER SHALL BE PRESSURE
TREATED FOR FIRE PROTECTION



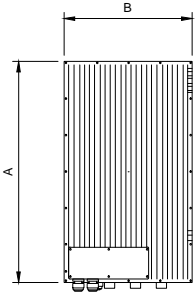
MANUFACTURER:		SAMSUNG
MODEL NO.:		RRH-P4
DIMENSIONS:		TOTAL WEIGHT :
A	23.81"	
B	13.78"	
C	8.96"	59.52 LBS



TOP VIEW



SIDE VIEW



FRONT VIEW

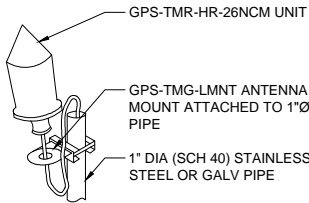
(N) 1900MHz RRU

24"x36" SCALE: NTS
11"x17" SCALE: NTS

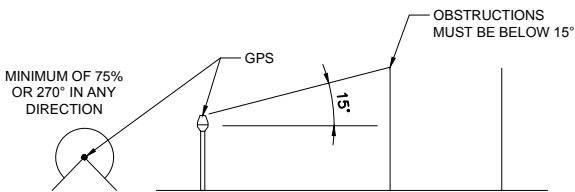
1

NOTE:

1. THE GPS ANTENNA MOUNT IS DESIGNED TO FASTEN TO A STANDARD 1"Ø, SCH. 40, GALVANIZED S.S. STEEL PIPE. THE PIPE MUST NOT BE THREADED AT THE ANTENNA MOUNT END. THE PIPE SHALL BE CUT TO THE REQ'D LENGTH USING A HAND OR ROTARY PIPE CUTTER TO ASSURE A SMOOTH AND PERPENDICULAR CUT. A HACK SAW SHALL NOT BE USED. THE CUT PIPE END SHALL BE DEBARRED.
2. IT IS CRITICAL THAT THE GPS ANTENNA IS MOUNTED SUCH THAT IT IS WITHIN 2 DEGREES OF VERTICAL AND THE BASE OF THE ANTENNA IS WITHIN 2" OF LEVEL.
3. DO NOT SWEEP TEST GPS ANTENNA.



SPECIFICATIONS	
HEIGHT	5"
WIDTH	3.2"
WEIGHT	0.6 LBS



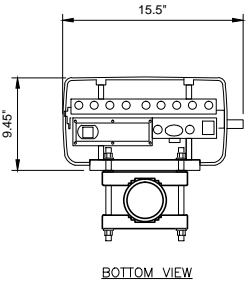
GPS ANTENNA

24"x36" SCALE: NTS
11"x17" SCALE: NTS

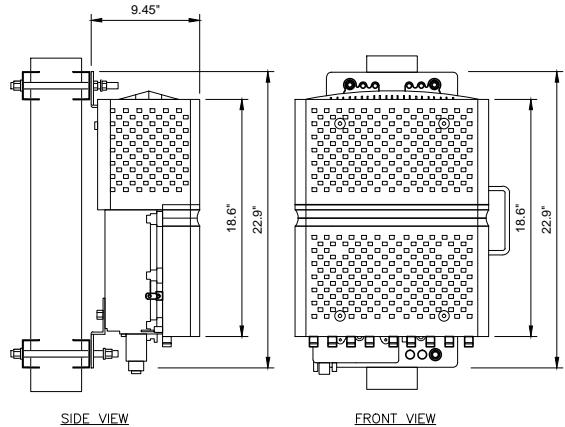
2

SAMSUNG 2.5 GHz RRH

MANUFACTURER:	SAMSUNG
DIMENSIONS, HxWxD:	18.6"x15.5"x9.45"
WEIGHT:	59.5lbs.
WEIGHT W/ BRACKET:	71.8 LBS.



BOTTOM VIEW

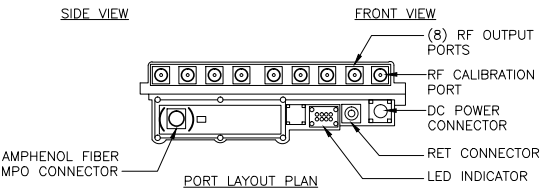


SIDE VIEW

FRONT VIEW

NOTES:

COMPLY WITH MANUFACTURES INSTRUCTIONS TO ENSURE THAT ALL RRH'S RECEIVE ELECTRICAL POWER WITHIN 24 HOURS OF BEING REMOVED FROM THE MANUFACTURER'S PACKAGING. DO NOT OPEN RRH PACKAGES IN THE RAIN.



(N) 2500 MHZ RRU

24"x36" SCALE: NTS
11"x17" SCALE: NTS

3

EQUIPMENT MOUNTING

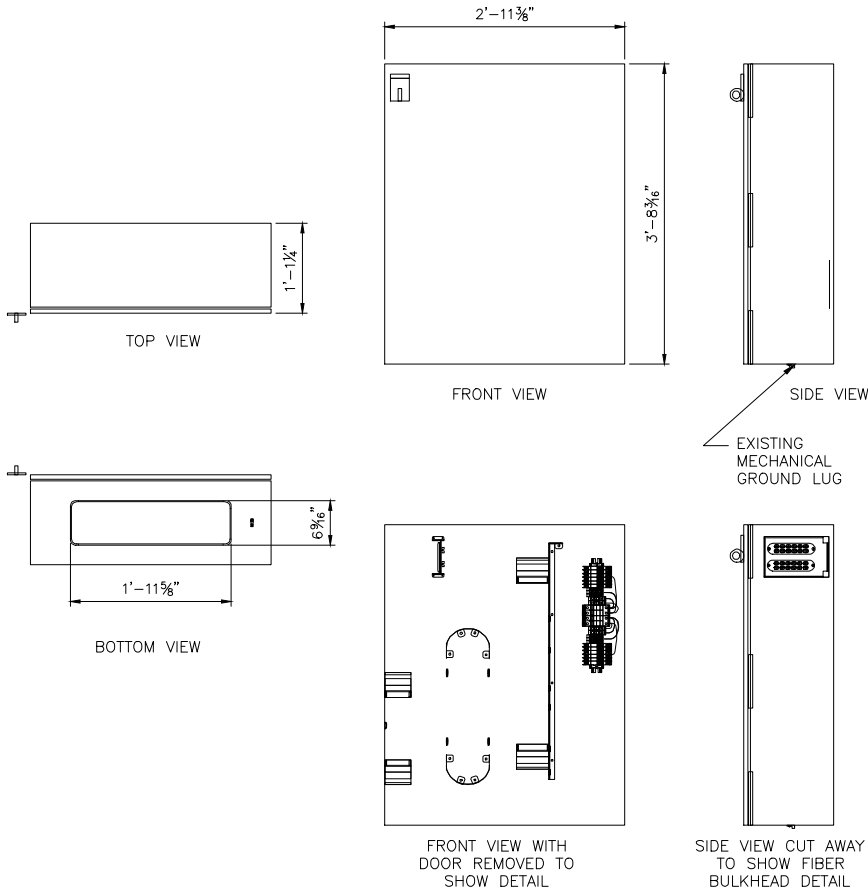
24"x36" SCALE: NTS
11"x17" SCALE: NTS

6

NEW ANTENNA MOUNT

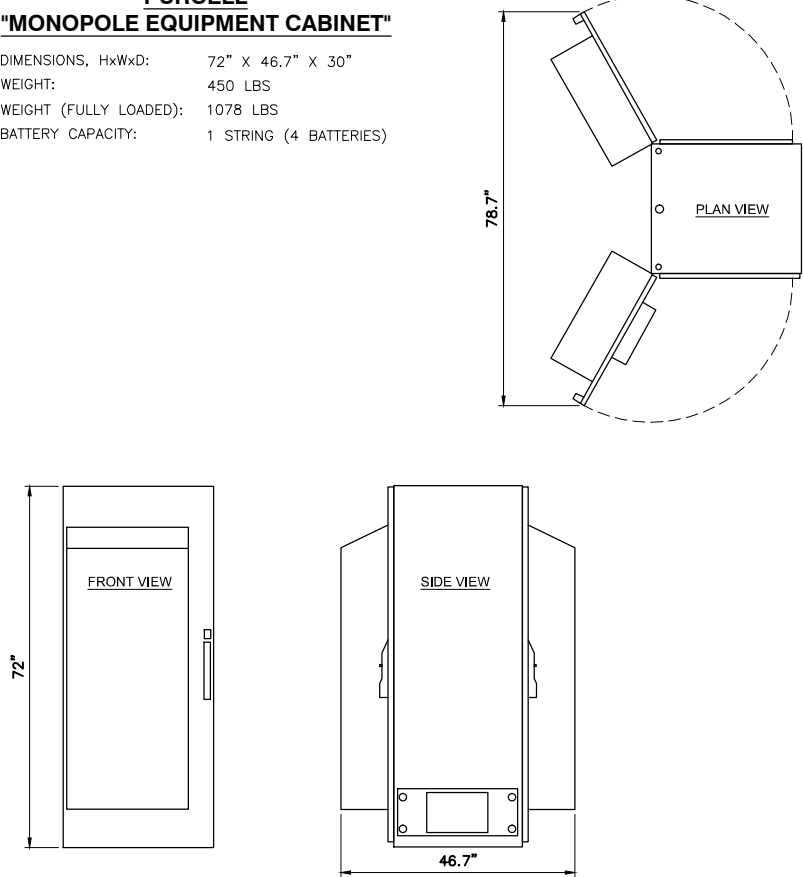
24"x36" SCALE: NTS
11"x17" SCALE: NTS

4



PURCELL "MONOPOLE EQUIPMENT CABINET"

DIMENSIONS, HxWxD:	72" X 46.7" X 30"
WEIGHT:	450 LBS
WEIGHT (FULLY LOADED):	1078 LBS
BATTERY CAPACITY:	1 STRING (4 BATTERIES)



SPRINT RADIO / BATTERY CABINET

24"x36" SCALE: NTS
11"x17" SCALE: NTS

7

FIBER DISTRIBUTION CABINET

24"x36" SCALE: NTS
11"x17" SCALE: NTS

5

Sprint

M SQUARE
WIRELESS
1387 CALLE AVANZADO
SAN CLEMENTE CA 95073 (408) 301-0804

DRAWN BY: JC
CHECKED BY: MM

REV	DATE	DESCRIPTION
C	08/09/2018	90% CD'S - REVISED
B	07/13/2018	90% CD'S - REVISED
A	04/09/2018	90% CD'S FOR REVIEW

IT IS A VIOLATION OF LAW FOR ANY PERSON, UNLESS THEY ARE ACTING UNDER THE DIRECTION OF A LICENSED PROFESSIONAL ENGINEER, TO ALTER THIS DOCUMENT.

DN52XC107
2851 S. PARKER ROAD
AURORA, CO 80014
ROOFTOP

SHEET TITLE
EQUIPMENT DETAILS

SHEET NUMBER
D-2