

## GENERAL NOTES

### CONCRETE

1. ALL CONCRETE SHALL BE NORMAL WEIGHT, 3000 PSI MINIMUM STRENGTH AT 28 DAYS.

### STRUCTURAL STEEL

1. BUILDING CODE: IBC 2012
2. ALL EXPOSED STEEL SHALL BE PAINTED.
3. ALL STRUCTURAL STEEL TUBE SHALL CONFORM TO THE REQUIREMENTS OF ASTM A500 GR. B. 46 KSI.
4. MINIMUM DESIGN LOADS:
  - LIVE LOADS:
    - ROOF 20 PSF.
    - UPLIFT 20 PSF.
    - SNOW 5 PSF.
  - DEAD LOADS:
    - ACTUAL MATERIAL WEIGHT
  - WIND 90 MPH
  - EXPOSURE B

### STRUCTURAL LIGHT GAGE STEEL

1. ALL LIGHT GAGE STRUCTURAL STEEL ITEMS SHALL CONFORM TO ASTM A446 AND TO THE LATEST EDITION OF " SPECIFICATIONS FOR THE DESIGN OF COLD-FORM STEEL STRUCTURAL MEMBERS" OF THE AMERICAN IRON AND STEEL INSTITUTE (AISI). Fy MIN = 57 KSI.
2. ALL LIGHT GAGE STEEL WELDING SHALL BE DONE IN ACCORDANCE WITH THE AWS CODE AND RECOMMENDATIONS, BY CERTIFIED WELDERS. ARC WELDING OR RESISTANCE IS APPLICABLE.

### METAL DECK

1. ALL METAL ROOF DECKS, UNLESS OTHERWISE NOTED, SHALL BE PAINTED, 26 GAGE, HR36x1.5x7.2 PANELS.
2. ROOF DECK, PANEL TO BEAM OR PURLIN CONNECTIONS SHALL BE NO. 14 SELF-TAPPING, HEX HEAD, PLATE STEEL OR STAINLESS STEEL SCREWS OR EQUAL WITH 5/8" O.D. STEEL OR ALUMINUM WASHER AND A SEPARATE NEOPRENE SEALING WASHER. PANEL TO BEAM CONNECTIONS SHALL BE 12" O.C.
3. DECK SHALL BE ERECTED AND FASTENED IN ACCORDANCE WITH SDI AND THE DECKS MANUFACTURER'S RECOMMENDATIONS.
4. DECK SHALL SPAN A MINIMUM OF 2 SPANS.

### PIER DEPTH IF ROCK ENCOUNTERED

IF ROCK IS ENCOUNTERED WITHIN 12" OF THE BOTTOM OF THE PAVED SURFACE, CONTINUE TO DRILL AN ADDITIONAL 18" INTO ROCK. IF ROCK IS ENCOUNTERED BELOW 12" OF BOTTOM OF PAVED SURFACE, CONTINUE TO DRILL AN ADDITIONAL 12" INTO ROCK.



117 N. DALLAS ST.  
ENNIS, TX 75119  
TELE: (469) 478-3033  
EMAIL: info@eyncon.com  
www.eyncon.com

DRAWN BY: T.B.

SCALE: N.T.S.

DATE: 4/29/15

SHEET

1

OF 4

REV.:

A - 7/22/16; REVISED TO  
IBC 2012.

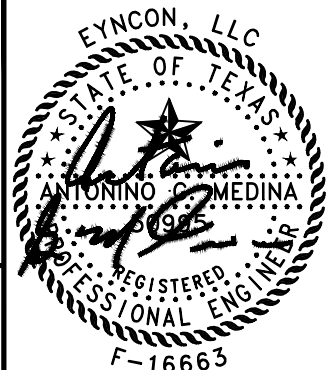
B - 7/25/16; CHANGED PURLINS,  
ADDED STIFFNER PLATE.

JOB CODE:  
EP0415060B

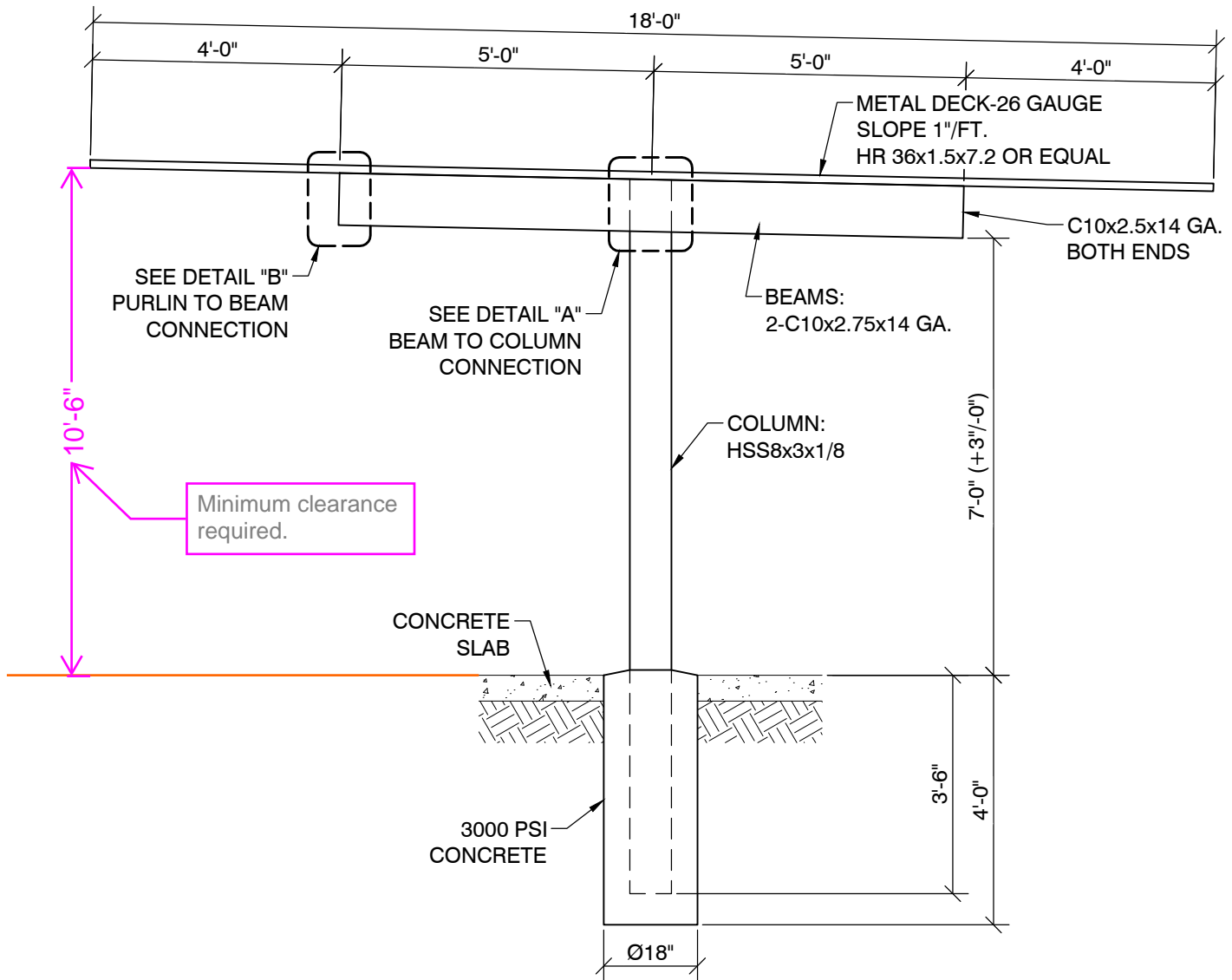
CARPORT DESIGN  
USA EAGLE CARPORTS, INC.  
PO BOX 162021  
FT. WORTH, TX 76161  
CONTACT: KEVIN WILLIAMS  
- (817) 788-5395

JOB:

THE PARKING SPOT  
2935 E. HWY 71  
DEL VALLE,  
TRAVIS COUNTY, TEXAS



THE SEAL APPEARING ON THIS  
DOCUMENT WAS AUTHORIZED BY  
ANTONINO G. MEDINA, P.E. 50995  
ON 7/25/16. (RECORD COPY ON FILE)



CARPORT ELEVATION VIEW



117 N. DALLAS ST.  
ENNIS, TX 75119  
TELE: (469) 478-3033  
EMAIL: info@eyncon.com  
www.eyncon.com

DRAWN BY: T.B.

SCALE: N.T.S.

DATE: 4/29/15

SHEET

2

OF 4

REV.:

A - 7/22/16; REVISED TO  
IBC 2012.

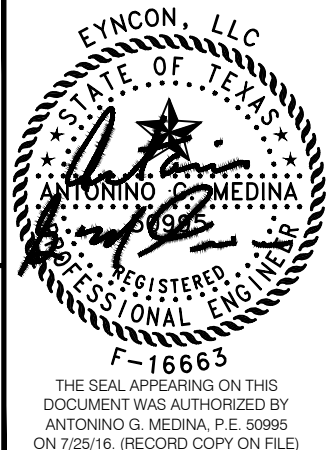
B - 7/25/16; CHANGED PURLINS,  
ADDED STIFFNER PLATE.

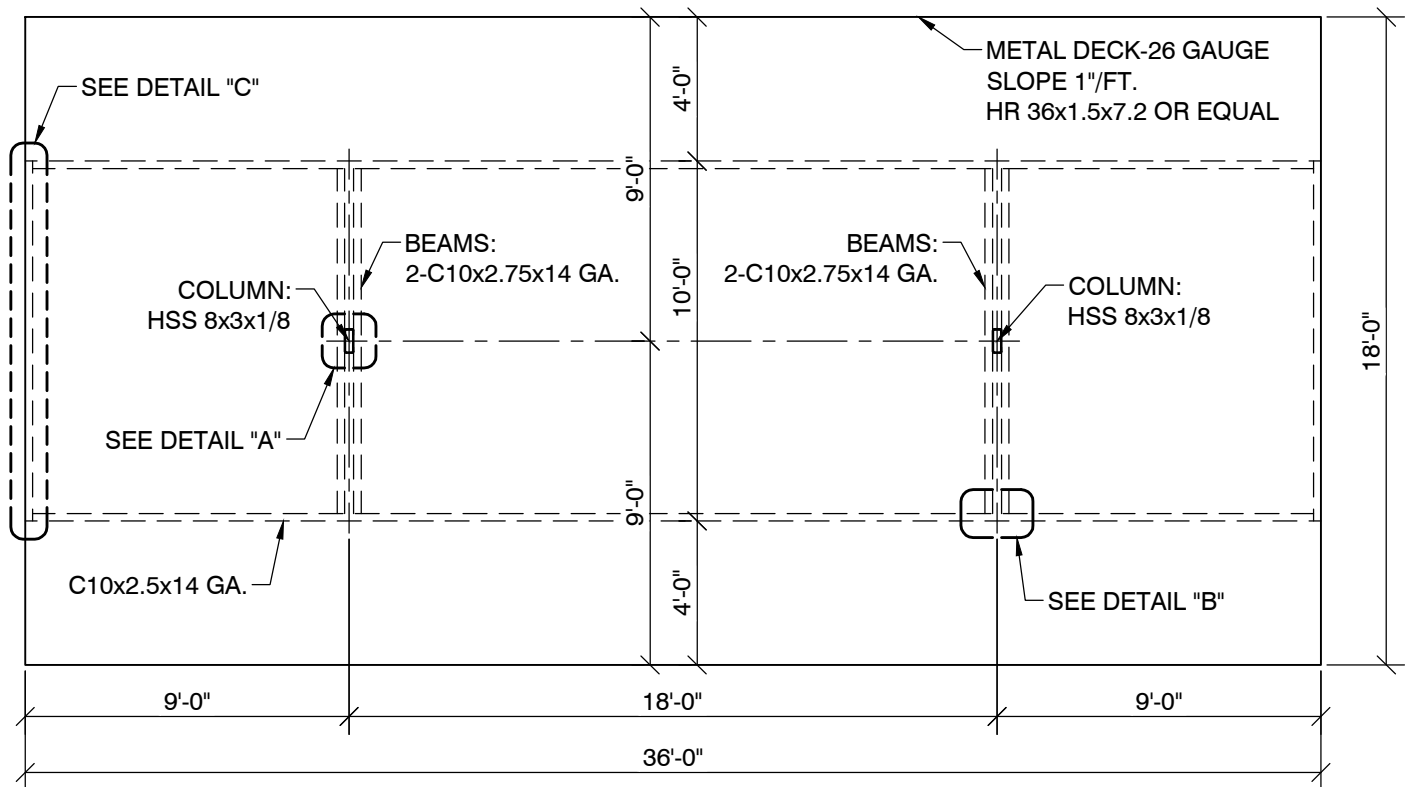
JOB CODE:  
EP0415060B

**CARPORT DESIGN**  
USA EAGLE CARPORTS, INC.  
PO BOX 162021  
FT. WORTH, TX 76161  
CONTACT: KEVIN WILLIAMS  
- (817) 788-5395

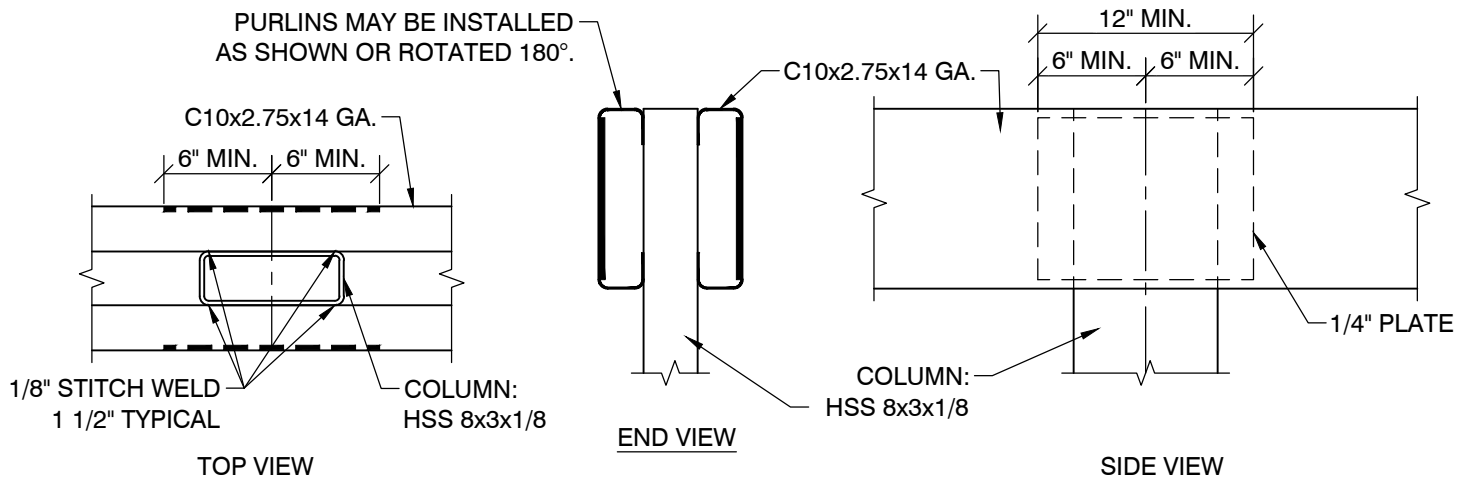
JOB:

THE PARKING SPOT  
2935 E. HWY 71  
DEL VALLE,  
TRAVIS COUNTY, TEXAS





**CARPORT TOP VIEW**



**DETAIL "A"**  
BEAM TO COLUMN CONNECTION

**Eyncon**  
ENGINEERING

117 N. DALLAS ST.  
ENNIS, TX 75119  
TELE: (469) 478-3033  
EMAIL: info@eyncon.com  
www.eyncon.com

DRAWN BY: T.B.

SCALE: N.T.S.

DATE: 4/29/15

SHEET

**3**

OF 4

REV.:

A - 7/22/16; REVISED TO  
IBC 2012.

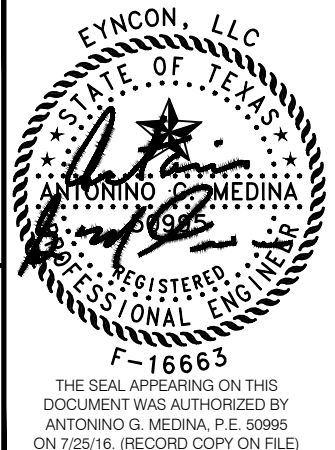
B - 7/25/16; CHANGED PURLINS,  
ADDED STIFFNER PLATE.

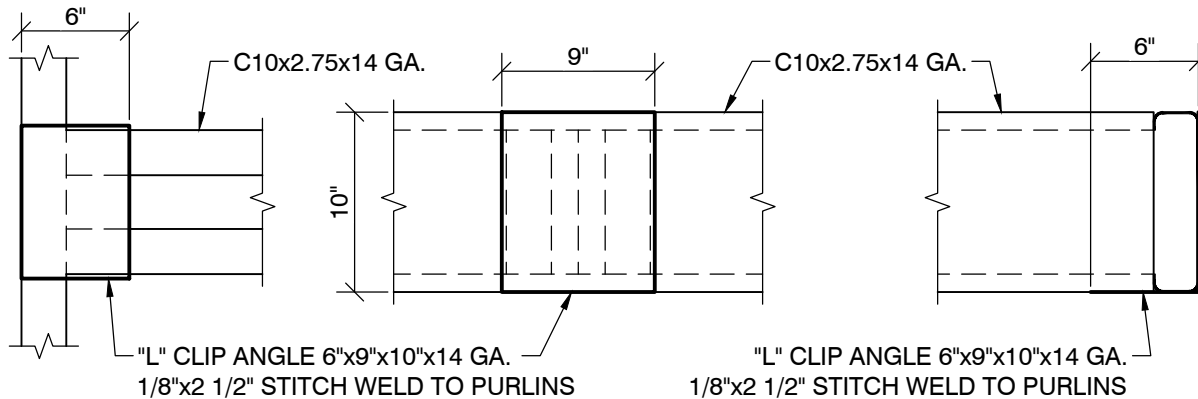
**JOB CODE:**  
**EP0415060B**

**CARPORT DESIGN**  
**USA EAGLE CARPORTS, INC.**  
PO BOX 162021  
FT. WORTH, TX 76161  
CONTACT: KEVIN WILLIAMS  
- (817) 788-5395

JOB:

**THE PARKING SPOT**  
2935 E. HWY 71  
DEL VALLE,  
TRAVIS COUNTY, TEXAS



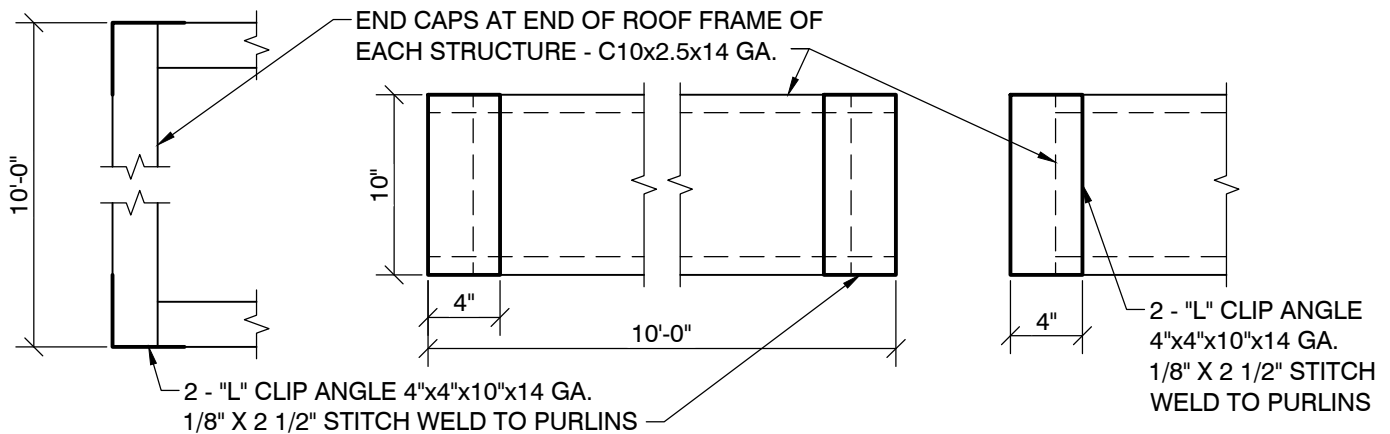


BOTTOM VIEW

END VIEW

SIDE VIEW

**DETAIL "B"**  
PURLINS TO BEAM CONNECTION



TOP VIEW

END VIEW

SIDE VIEW

**DETAIL "C"**  
END CAPS - PURLIN WITH "L" CLIP ANGLE ATTACHMENT



117 N. DALLAS ST.  
ENNIS, TX 75119  
TELE: (469) 478-3033  
EMAIL: info@eyncon.com  
www.eyncon.com

DRAWN BY: T.B.

SCALE: N.T.S.

DATE: 4/29/15

SHEET

**4**

OF 4

REV.:

A - 7/22/16; REVISED TO IBC 2012.

B - 7/25/16; CHANGED PURLINS, ADDED STIFFNER PLATE.

**JOB CODE:**  
**EP0415060B**

**CARPORT DESIGN**  
**USA EAGLE CARPORTS, INC.**  
PO BOX 162021  
FT. WORTH, TX 76161  
CONTACT: KEVIN WILLIAMS  
- (817) 788-5395

JOB:

THE PARKING SPOT  
2935 E. HWY 71  
DEL VALLE,  
TRAVIS COUNTY, TEXAS

