

# PORTEOS SUBDIVISION FILING NO. 5

PARCEL OF LAND LOCATED IN THE SOUTHWEST QUARTER OF SECTION 8, TOWNSHIP 3 SOUTH, RANGE 65 WEST OF THE 6TH PRINCIPAL MERIDIAN, CITY OF AURORA, COUNTY OF ADAMS, STATE OF COLORADO

SHEET 1 OF 7

Please remove AutoCad SHX text items in the comment section. Please flatten to reduce select-ability of the items.  
updated.

## LEGAL DESCRIPTION

KNOW ALL PEOPLE BY THESE PRESENTS THAT THE UNDERSIGNED WARRANT THEY ARE THE OWNERS OF A PARCEL OF LAND SITUATED IN SOUTHWEST QUARTER OF SECTION 8, TOWNSHIP 3 SOUTH, RANGE 65 WEST OF THE 6TH PRINCIPAL MERIDIAN, CITY OF AURORA, COUNTY OF ADAMS, BEING A PORTION OF A PARCEL OF LAND DESCRIBED IN RECEPTION NO. 2006000986489, DATED OCTOBER 4, 2006, IN THE ADAMS COUNTY CLERK AND RECORDER'S OFFICE, BEING MORE PARTICULARLY DESCRIBED AS FOLLOWS:

COMMENCING AT THE WEST QUARTER CORNER OF SAID SECTION 8, WHENCE THE SOUTHWEST CORNER OF SAID SECTION 8 BEARS S00°47'32"E A DISTANCE OF 2,657.00 FEET;  
THENCE ALONG THE WEST LINE OF THE SOUTHWEST QUARTER OF SAID SECTION 8, S00°47'32"E, A DISTANCE OF 40.02 FEET. THENCE S89°43'41"E A DISTANCE OF 72.01 FEET TO THE EAST RIGHT-OF-WAY OF HARVEST ROAD (NOT CONSTRUCTED). THENCE, LEAVING SAID RIGHT-OF-WAY, S89°43'41"E, A DISTANCE OF 585.51 FEET TO THE POINT OF BEGINNING (P.O.B.), FROM WHENCE SAID WEST QUARTER CORNER OF SECTION 8 BEARS N86°15'00"W, A DISTANCE OF 659.48 FEET.

THENCE S89°43'41"E, A DISTANCE OF 1,258.13 FEET TO THE BEGINNING OF A CURVE TO THE RIGHT HAVING A RADIUS OF 20.00 FEET, A DELTA ANGLE OF 89°56'30", A CHORD BEARING S44°45'27"E, A DISTANCE OF 28.27 FEET, AND AN ARC LENGTH OF 31.40 FEET.  
THENCE S00°12'48"W, A DISTANCE OF 2,459.57 FEET TO THE BEGINNING OF A CURVE TO THE RIGHT HAVING A RADIUS OF 25.00 FEET, A DELTA ANGLE OF 89°59'51", A CHORD BEARING S45°12'44"W, A DISTANCE OF 35.35 FEET, AND AN ARC LENGTH OF 39.27 FEET.  
THENCE N89°47'21"W, A DISTANCE OF 534.74 FEET,  
THENCE N38°06'42"W, A DISTANCE OF 537.17 FEET,  
THENCE N87°55'13"W, A DISTANCE OF 385.37 FEET,  
THENCE N00°12'41"E, A DISTANCE OF 2,071.92 FEET TO THE POINT OF BEGINNING

CONTAINING: 2,966,705 SQUARE FEET OR 68.11 ACRES, MORE OR LESS.

HAVE LAID OUT, PLATTED, AND SUBDIVIDED THE SAME INTO LOTS, BLOCKS, AND TRACTS AS SHOWN ON THIS PLAT UNDER THE NAME AND STYLE OF PORTEOS SUBDIVISION FILING NO. 5, AND BY THESE PRESENTS DO HEREBY DEDICATE TO THE CITY OF AURORA, COLORADO, FOR THE PERPETUAL USE OF THE PUBLIC, THE STREETS AND EASEMENTS, AS SHOWN HEREON AND NOT PREVIOUSLY DEDICATED TO THE PUBLIC.

## CONTRACT PURCHASER:

CRG ACQUISITION, LLC, A MISSOURI LIMITED LIABILITY COMPANY.

SIGNATURE

PRINT NAME

PRINT TITLE

## NOTARIAL:

STATE OF COLORADO )

)

COUNTY OF \_\_\_\_\_ )

THE FORGOING INSTRUMENT WAS ACKNOWLEDGE BEFORE ME THIS \_\_\_\_\_ DAY OF \_\_\_\_\_, 20\_\_\_\_ BY \_\_\_\_\_ AS \_\_\_\_\_ OF \_\_\_\_\_ OF

CRG ACQUISITION, LLC, A MISSOURI LIMITED LIABILITY COMPANY.

WITNESS MY HAND AND OFFICIAL SEAL

NOTARY PUBLIC \_\_\_\_\_

MY COMMISSION EXPIRES \_\_\_\_\_

## OWNER:

ACP DIA 1287 INVESTORS, LLC, A COLORADO LIMITED LIABILITY COMPANY.

SIGNATURE

PRINT NAME

PRINT TITLE

## NOTARIAL:

STATE OF COLORADO )

)

COUNTY OF \_\_\_\_\_ )

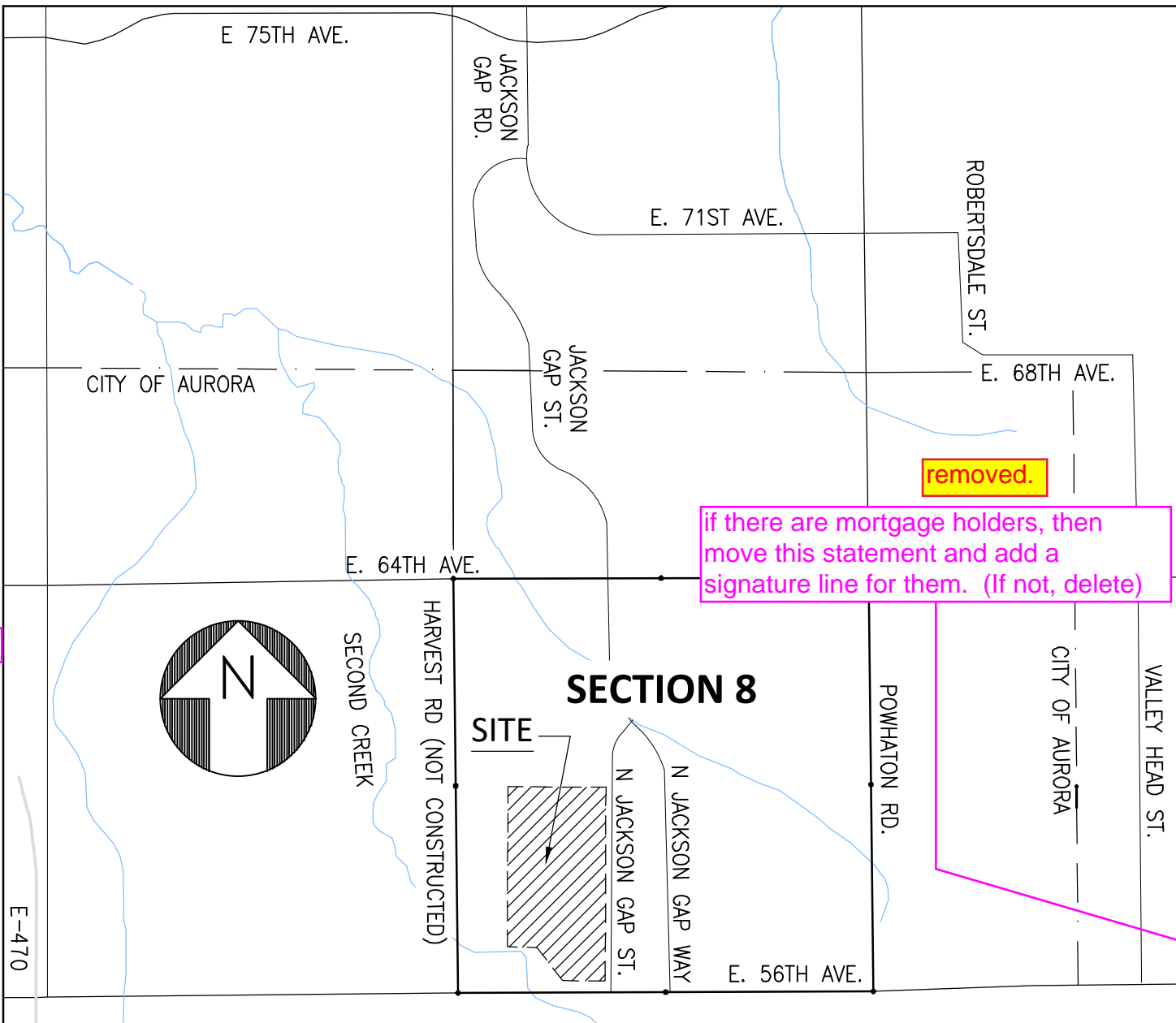
THE FORGOING INSTRUMENT WAS ACKNOWLEDGE BEFORE ME THIS \_\_\_\_\_ DAY OF \_\_\_\_\_, 20\_\_\_\_ BY \_\_\_\_\_ AS \_\_\_\_\_ OF \_\_\_\_\_ OF

ACP DIA 1287 INVESTORS, LLC, A COLORADO LIMITED LIABILITY COMPANY.

WITNESS MY HAND AND OFFICIAL SEAL

NOTARY PUBLIC \_\_\_\_\_

MY COMMISSION EXPIRES \_\_\_\_\_



## VICINITY MAP

1" = 2000'

## NOTES :

1. RIGHT-OF-WAY FOR INGRESS AND EGRESS FOR SERVICE AND EMERGENCY VEHICLES IS GRANTED OVER, ACROSS, ON, AND THROUGH ANY AND ALL PRIVATE ROADS, WAYS, AND FIRE LANES NOW OR HEREAFTER ESTABLISHED ON THE DESCRIBED PROPERTY. THE SAME ARE HEREBY DESIGNATED AS FIRE LANES AND EMERGENCY AND SERVICE VEHICLE ROADS, AND SHALL BE POSTED "NO PARKING - FIRE LANE".

2. BASIS OF BEARINGS: BEARINGS ARE BASED UPON THE WEST LINE OF THE SOUTHWEST QUARTER SECTION 8, T.03S. R.65W. AS BEARING S. 00°47'32" E. PER THE CITY OF AURORA'S (COA) HORIZONTAL CONTROL MAP BOOK 95W BETWEEN THE MONUMENTS SHOWN HEREON. PROJECT COORDINATES ARE MODIFIED COLORADO STATE PLANE CENTRAL ZONE 83(1992) COORDINATES PER COA'S MAP BOOK 95W.

3. THE EASEMENT AREA WITHIN EACH LOT IS TO BE CONTINUOUSLY MAINTAINED BY THE OWNER OF THE LOT OR TRACT EXCEPTING THE CITY OF AURORA FROM SUCH RESPONSIBILITY. ANY STRUCTURES INCONSISTENT WITH THE USE GRANTED IN THE EASEMENT ARE PROHIBITED.

4. NON-EXCLUSIVE SIDEWALK EASEMENTS ARE HEREBY GRANTED TO THE CITY OF AURORA FOR THE PURPOSE OF MAINTAINING, RECONSTRUCTING, CONTROLLING AND USING SUCH SIDEWALKS TOGETHER WITH THE RIGHT OF INGRESS AND EGRESS, PROVIDED THE CITY SHALL NOT INTERFERE WITH ANY OTHER STRUCTURES OR IMPROVEMENTS.

5. TRACT B IS GRANTED TO THE CITY OF AURORA FOR PUBLIC RIGHT OF WAY AND WILL BE CONSTRUCTED BY THE DEVELOPER TO CITY OF AURORA SPECIFICATIONS.

6. THE EASEMENTS HEREON SHOWN AND LABELED 6' GAS EASEMENT ARE FOR THE EXCLUSIVE USE AS GAS EASEMENTS; EXCEPT OTHER UTILITIES, SERVICE WALKS, AND DRIVEWAYS MAY CROSS SAID EASEMENTS AT SUBSTANTIALLY RIGHT ANGLES.

7. ALL OWNERS OF LOTS ADJACENT TO (INSERT NAMES OF ANY ARTERIAL, COLLECTOR, AND CONTINUOUS TYPE 1 LOCAL STREETS HERE) SHALL BE REQUIRED TO COMPLY WITH REQUIREMENTS OF THE AURORA CITY CODE RESTRICTING THE ABILITY TO BUILD A FENCE ALONG THOSE STREETS OR THE TYPES AND SIZES OF FENCES THAT CAN BE BUILT ALONG THOSE STREETS.

8. UNITS: ALL DIMENSIONS SHOWN HEREON ARE IN U.S. SURVEY FEET. ALL BEARINGS SHOWN HERE ON ARE IN DEGREE-MINUTES-SECONDS.

9. THIS SURVEY DOES NOT CONSTITUTE A TITLE SEARCH BY MASER CONSULTING TO DETERMINE OWNERSHIP OR EASEMENTS OF RECORD. FOR ALL INFORMATION REGARDING EASEMENTS, RIGHTS-OF-WAY AND TITLE OF RECORD, MASER CONSULTING RELIED UPON COMMITMENT FOR TITLE INSURANCE, ORDER NUMBER: ABC70656007-3, ISSUED BY LAND TITLE GUARANTEE COMPANY AND HAVING AN EFFECTIVE DATE OF OCTOBER 27, 2020 AT 5:00 P.M.  
NOTICE: ACCORDING TO COLORADO LAW YOU MUST COMMENCE ANY LEGAL ACTION BASED UPON ANY DEFECT IN THIS SURVEY WITHIN THREE YEARS AFTER YOU FIRST DISCOVER SUCH DEFECT. IN NO EVENT MAY ANY ACTION BASED UPON ANY DEFECT IN THIS SURVEY BE COMMENCED MORE THAN TEN YEARS FROM THE DATE OF CERTIFICATION SHOWN HEREON.

10. THE OWNERS OR OCCUPANTS OF THE LANDS HEREIN DESCRIBED SHALL HAVE NO RIGHT OR CAUSE OF ACTION, EITHER IN LAW OR IN EQUITY, FOR DAMAGES OR INJURY TO ANY PERSON OR PROPERTY ARISING OUT OF OR RESULTING DIRECTLY OR INDIRECTLY, FROM THE OVERFLIGHT OF AIRCRAFT, OR FOR DAMAGES OR INJURY TO ANY PERSON OR PROPERTY RESULTING FROM ANY NOISE, NUISANCE, VIBRATIONS OF ANY KIND OR DESCRIPTION RESULTING, DIRECTLY OR INDIRECTLY, FROM AIRCRAFT OVERFLIGHTS PROVIDED, THAT NOTHING CONTAINED IN THE FOREGOING EASEMENT SHALL DIVEST THE OWNERS OR OCCUPANTS, THEIR HEIRS, SUCCESSORS ADMINISTRATORS OR ASSIGNS, OF ANY RIGHT OR CAUSE OF ACTION FOR DAMAGES TO ANY PERSON OR PROPERTY RESULTING FROM THE NEGLIGENT OPERATION OF AIRCRAFT OVERFLIGHTS OVER THE DESCRIBED PREMISES AT ANY ALTITUDE ABOVE GROUND LEVEL.

## COVENANTS:

THE UNDERSIGNED OWNERS, FOR THEMSELVES, THEIR HEIRS, SUCCESSORS AND ASSIGNS, COVENANT AND AGREE WITH THE CITY OF AURORA;  
NO STRUCTURE CONSTRUCTED ON ANY PORTION OF THE PLATTED LAND SHOWN HEREIN SHALL BE OCCUPIED OR USED UNLESS AND UNTIL ALL PUBLIC IMPROVEMENTS, AS DEFINED BY CHAPTER 146 OF THE CITY CODE OF AURORA, COLORADO, ARE IN PLACE AND ACCEPTED BY THE CITY OR CASH FUNDS OR OTHER SECURITY FOR THE SAME ARE ESCROWED WITH THE CITY OF AURORA AND A CERTIFICATE OF OCCUPANCY HAS BEEN ISSUED BY THE CITY;

(IF HALF OF THE STREET ABUTTING THE PROPERTY BEING SUBDIVIDED IS REQUIRED BY ENGINEERING TO BE IMPROVED, ADD THIS SENTENCE NEXT. (MODIFY THE UNDERLINED PORTION TO FIT YOUR PLAT.): THE NORTH 1/2 OF SPRUCE TRAIL AVE. ABUTTING THE PROPERTY SHALL BE INCLUDED AS A PUBLIC IMPROVEMENT FOR THIS SUBDIVISION AND WILL BE IMPROVED BY THE OWNER TO CITY OF AURORA SPECIFICATIONS;

ALL ELECTRICAL, COMMUNITY UTILITY LINES AND SERVICES, AND STREET LIGHTING CIRCUITS, EXCEPT AS PROVIDED IN SECTION 126-505 OF THE CITY CODE AS THE SAME MAY BE AMENDED FROM TIME TO TIME, SHALL BE INSTALLED UNDERGROUND;

ALL CROSSINGS OR ENCROACHMENTS, INCLUDING BUT NOT LIMITED, TO PRIVATE LANDSCAPE IRRIGATION SYSTEMS, UNDERDRAINS, OR PRIVATE UTILITIES INTO EASEMENTS OWNED BY THE CITY OF AURORA ARE ACKNOWLEDGED BY THE UNDERSIGNED AS BEING SUBJECT TO THE CITY OF AURORA'S USE AND OCCUPANCY OF SAID EASEMENTS AND RIGHTS-OF-WAY. THE UNDERSIGNED, THEIR SUCCESSORS AND ASSIGNS, HEREBY AGREE TO INDEMNIFY AND HOLD HARMLESS THE CITY OF AURORA FOR ANY LOSS, DAMAGE, OR REPAIR TO PRIVATE LANDSCAPE IRRIGATION SYSTEMS, UNDERDRAINS, OR PRIVATE UTILITIES THAT MAY RESULT FROM THE CITY OF AURORA'S USE AND OCCUPANCY OR EXERCISE OF ITS RIGHTS IN SAID EASEMENTS AND RIGHTS OF WAY. THE UNDERSIGNED, ITS SUCCESSORS AND ASSIGNS, FURTHER AGREES TO REMOVE, REPAIR, REPLACE, RELOCATE, MODIFY, OR OTHERWISE ADJUST SAID PRIVATE LANDSCAPE IRRIGATION SYSTEMS, UNDERDRAINS, PRIVATE DETENTION POND AND DRAINAGE FEATURES, OR PRIVATE UTILITIES UPON REQUEST FROM THE CITY OF AURORA AND AT NO EXPENSE TO THE CITY OF AURORA.

## CITY OF AURORA APPROVALS:

THE UNDERSIGNED AS MORTGAGE HOLDERS ON PART OR ALL OF THE HEREON SHOWN REAL PROPERTY, DO HEREBY AGREE AND CONSENT TO THE PLATTING OF SAID PROPERTY AS SHOWN HEREON.

THE FOREGOING INSTRUMENT IS APPROVED FOR FILING AND CONVEYANCE OF STREETS, EASEMENTS AS SHOWN HEREON AND IS ACCEPTED BY THE CITY OF AURORA, COLORADO, THIS \_\_\_\_\_ DAY OF \_\_\_\_\_, 20\_\_\_\_ AD, SUBJECT TO THE CONDITION THAT THE CITY SHALL UNDERTAKE MAINTENANCE OF ANY SUCH STREETS ONLY AFTER CONSTRUCTION HAS BEEN COMPLETED BY THE SUBDIVIDER TO CITY OF AURORA SPECIFICATIONS

CITY ENGINEER

DATE

PLANNING DIRECTOR

DATE

## SURVEYOR'S CERTIFICATION

I HEREBY CERTIFY I WAS IN RESPONSIBLE CHARGE OF THE SURVEY WORK USED IN THE PREPARATION OF THIS PLAT; THE POSITIONS OF THE PLATTED POINTS SHOWN HEREON HAVE AN ACCURACY OF NOT LESS THAN ONE (1) FOOT IN TEN THOUSAND (10,000) FEET PRIOR TO ADJUSTMENTS; AND ALL BOUNDARY MONUMENTS AND CONTROL CORNERS SHOWN HEREON WERE IN PLACE AS DESCRIBED ON 04/05/20.

update this Title Commitment to be within 120 calendar days of the plat approval date.

**Preliminary**  
02/18/2021 10:46:42 AM

BRANDON A. MOSER  
REGISTERED COLORADO LAND SURVEYOR NO. 38412  
FOR AND ON BEHALF OF MASER CONSULTING P.A.

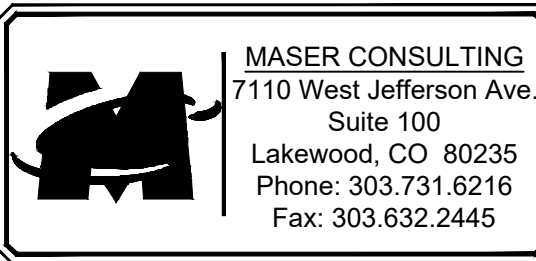
## CLERK AND RECORDER'S CERTIFICATE:

ACCEPTED FOR FILING IN THE OFFICE OF THE COUNTY CLERK AND RECORDER OF ADAMS COUNTY, COLORADO ON THIS \_\_\_\_\_ DAY OF \_\_\_\_\_ 20\_\_\_\_ AD AT \_\_\_\_\_ O'CLOCK \_\_\_\_M.

COUNTY CLERK AND RECORDER

DEPUTY

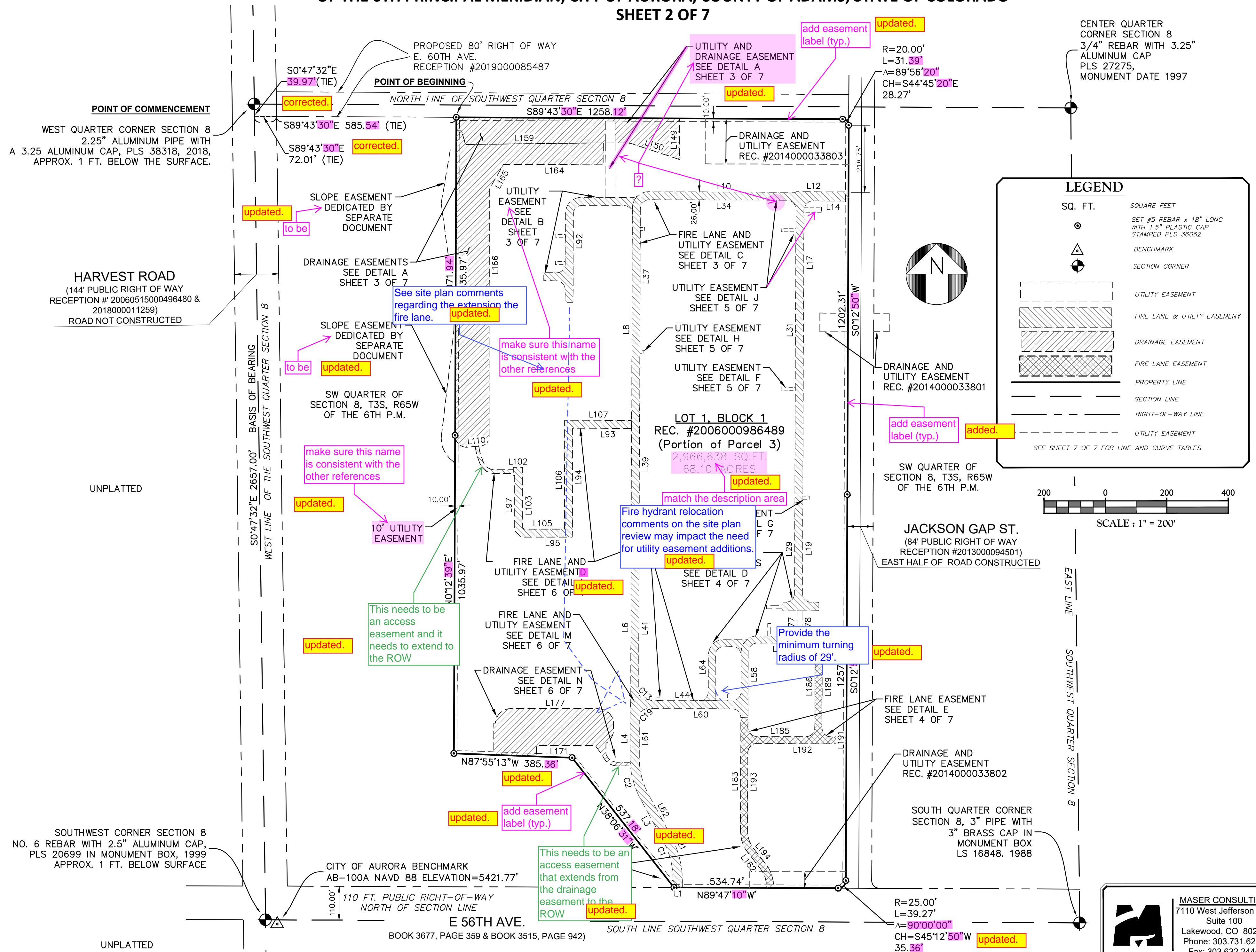
INSTRUMENT NO. \_\_\_\_\_



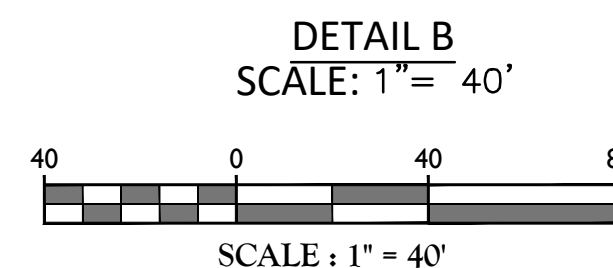
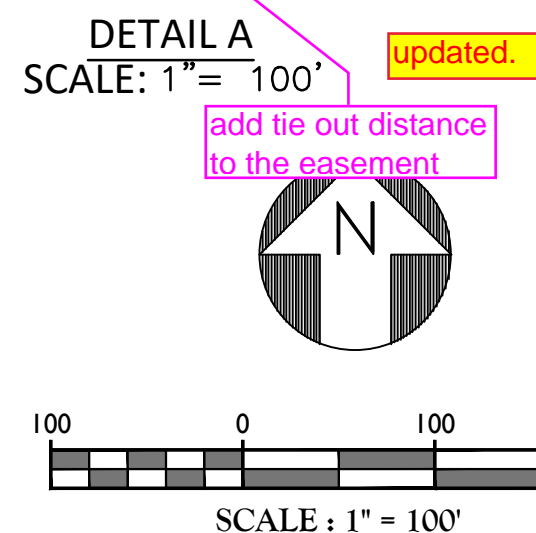


PARCEL OF LAND LOCATED IN THE SOUTHWEST QUARTER OF SECTION 8 , TOWNSHIP 3 SOUTH, RANGE 65 WEST  
OF THE 6TH PRINCIPAL MERIDIAN, CITY OF AURORA, COUNTY OF ADAMS, STATE OF COLORADO

SHEET 2 OF 7



PARCEL OF LAND LOCATED IN THE SOUTHWEST QUARTER OF SECTION 8 , TOWNSHIP 3 SOUTH, RANGE 65 WEST  
OF THE 6TH PRINCIPAL MERIDIAN, CITY OF AURORA, COUNTY OF ADAMS, STATE OF COLORADO



Line Table			
Line #	Length	Direction	
L158	6.69'	S89°45'08"E	
L159	448.78'	N89°18'39"E	
L160	45.81'	S15°45'45"E	
L161	17.53'	S89°47'21"E	
L162	44.52'	S0°12'40"W	
L163	71.66'	S0°13'23"W	
L164	324.68'	N89°46'07"W	
L165	93.26'	S29°38'27"W	
L166	808.67'	S0°03'57"W	
L167	31.22'	S85°18'29"W	
L168	992.14'	N0°12'39"E	

Curve Table			
Curve #	Length	Radius	P
C33	30.32'	138.47'	12
C34	27.49'	126.47'	12
C36	47.75'	30.88'	88
C37	56.36'	38.06'	84

Line Table			
Line #	Length	Direction	
L113	31.75'	S89°36'46"E	
L114	10.00'	S0°12'39"W	
L115	31.82'	N89°36'46"W	
L116	31.20'	S89°47'21"E	
L117	10.00'	S0°12'39"W	
L118	31.20'	N89°47'21"W	
L119	14.00'	N89°47'21"W	
L120	10.00'	N0°12'39"E	
L121	14.00'	S89°47'21"E	
L143	177.65'	S0°12'39"W	
L147	177.63'	N0°12'39"E	

Curve Table			
Curve #	Length	Radius	Delta
C5	45.33'	52.00'	49°56'
C6	37.35'	52.15'	41°02'
C12	45.55'	29.00'	90°00'
C26	45.55'	29.00'	90°00'
C27	45.55'	29.00'	90°00'
C28	45.55'	29.00'	90°00'
C29	43.55'	29.00'	86°02'
C30	81.68'	52.00'	90°00'
C31	19.27'	29.16'	37°52'


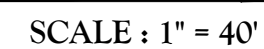
Curve Table			
Curve #	Length	Radius	Delta
C5	45.33'	52.00'	49°56'50"
C6	37.35'	52.15'	41°02'04"
C12	45.55'	29.00'	90°00'00"
C26	45.55'	29.00'	90°00'02"
C27	45.55'	29.00'	90°00'00"
C28	45.55'	29.00'	90°00'00"
C29	43.55'	29.00'	86°02'45"
C30	81.68'	52.00'	90°00'00"
C31	19.27'	29.16'	37°52'40"



**MASER CONSULTING**  
7110 West Jefferson Ave.  
Suite 100  
Lakewood, CO 80235  
Phone: 303.731.6216  
Fax: 303.632.2445

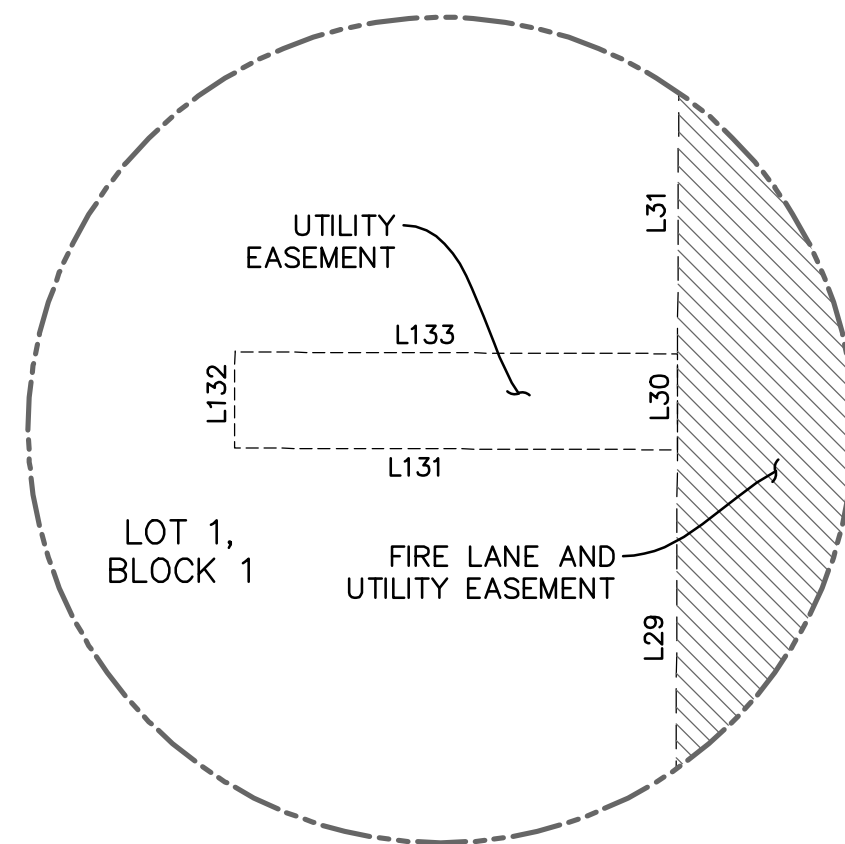


**SHEET 4 OF 7**



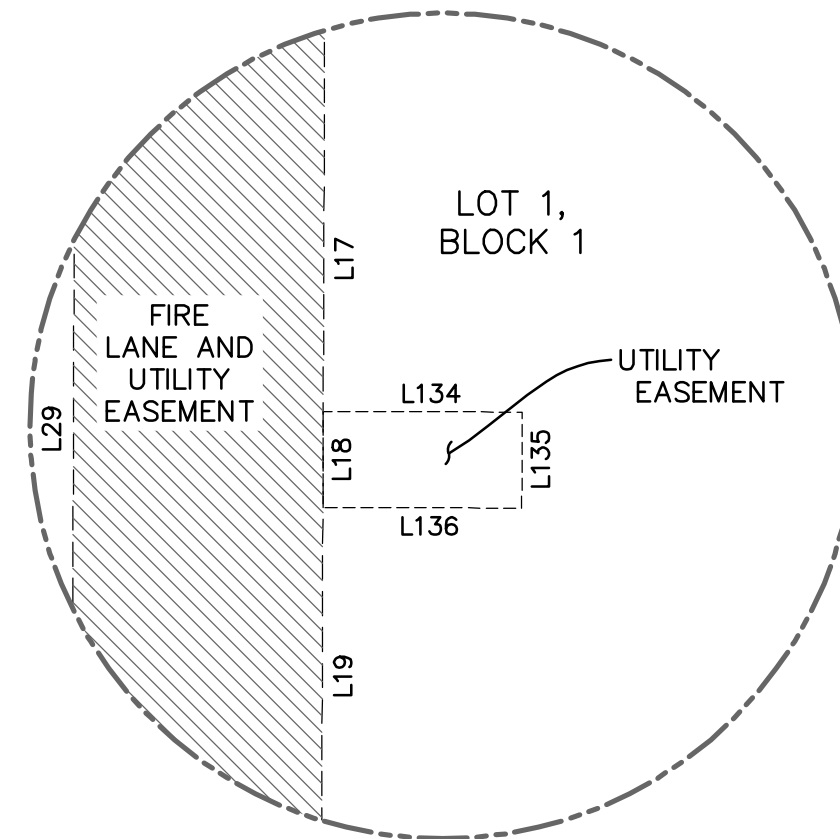
**MASER CONSULTING**  
 7110 West Jefferson Ave.  
 Suite 100  
 Lakewood, CO 80235  
 Phone: 303.731.6216  
 Fax: 303.632.2445

**PORTEOS SUBDIVISION FILING NO. 5**  
PARCEL OF LAND LOCATED IN THE SOUTHWEST QUARTER OF SECTION 8, TOWNSHIP 3 SOUTH, RANGE 65 WEST  
OF THE 6TH PRINCIPAL MERIDIAN, CITY OF AURORA, COUNTY OF ADAMS, STATE OF COLORADO  
**SHEET 4 OF 7**



DETAIL F  
SCALE: 1" = 20'

Line Table		
Line #	Length	Direction
L29	661.13'	N0°12'39"E
L30	10.00'	N0°12'39"E
L31	506.36'	N0°12'39"E
L131	46.09'	S89°47'21"E
L132	10.00'	S0°12'39"W
L133	46.09'	N89°47'21"W

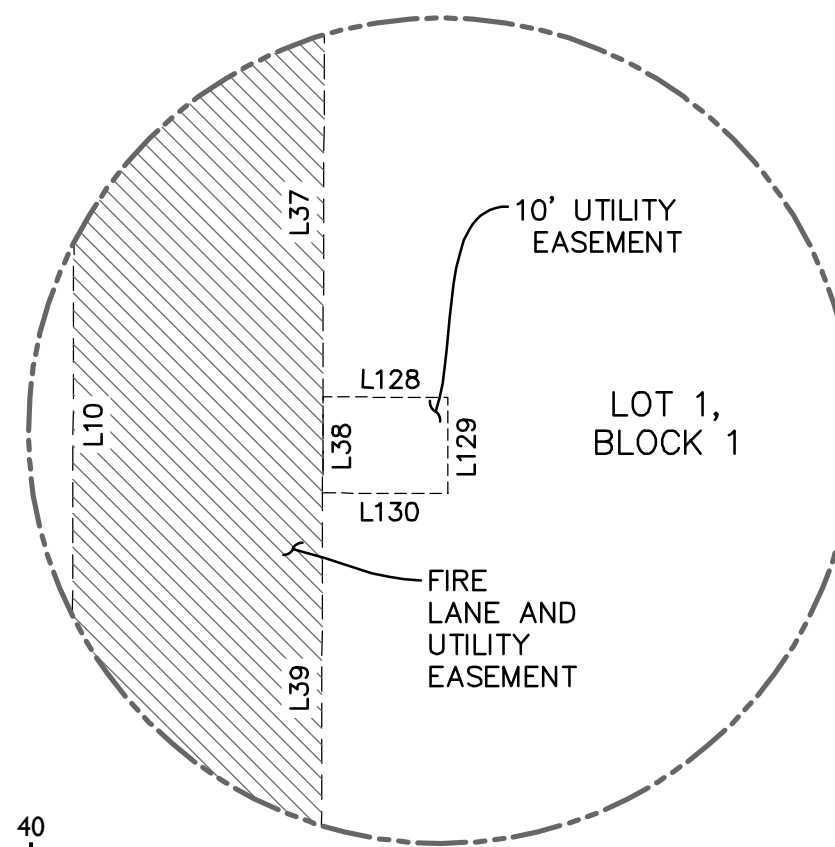
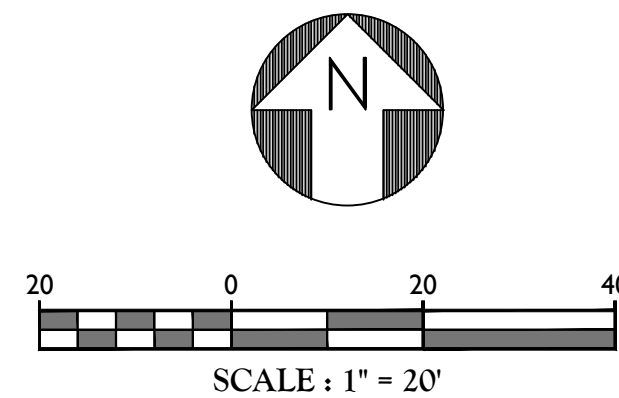


DETAIL G  
SCALE: 1" = 20'

Line Table		
Line #	Length	Direction
L17	923.21'	S0°12'43"W
L18	10.00'	S0°12'39"W
L29	661.13'	N0°12'39"E
L134	20.70'	N89°47'21"W
L135	10.00'	N0°12'39"E
L136	20.70'	S89°47'21"E

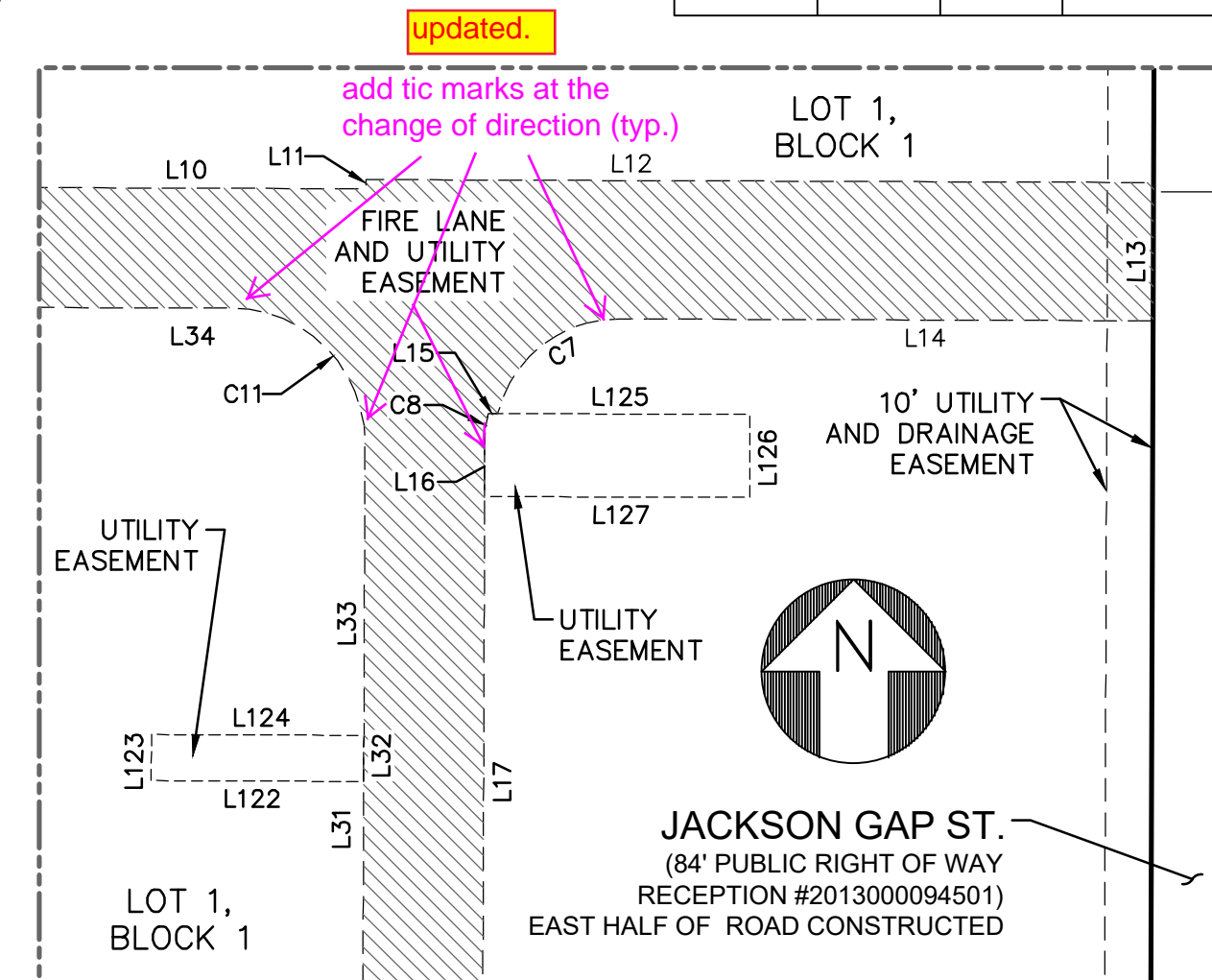
Curve Table			
Curve #	Length	Radius	Delta
C7	35.99'	27.00'	76°22'32"
C8	6.40'	29.00'	12°39'10"
C11	45.55'	29.00'	90°00'00"

Line Table		
Line #	Length	Direction
L10	479.56'	S89°47'21"E
L11	2.00'	N0°18'59"E
L12	170.96'	S89°47'10"E
L13	29.99'	S0°16'26"W
L14	115.93'	N89°47'23"W
L15	2.06'	S90°00'00"W
L16	11.64'	S0°07'40"W
L17	923.21'	S0°12'43"W
L31	506.36'	N0°12'39"E
L32	10.00'	N0°12'39"E
L33	63.51'	N0°12'39"E
L34	448.56'	N89°47'21"W
L122	46.09'	S89°46'15"E
L123	10.00'	S0°12'39"W
L124	46.09'	N89°46'15"W
L125	56.78'	S89°48'51"E
L126	18.00'	S0°06'12"W
L127	57.50'	N89°48'51"W



DETAIL H  
SCALE: 1" = 20'

Line Table		
Line #	Length	Direction
L8	671.08'	N0°12'39"E
L37	390.10'	S0°12'59"W
L38	10.00'	S0°12'39"W
L39	554.00'	S0°12'39"W
L128	13.00'	N89°47'21"W
L129	10.00'	N0°12'39"E
L130	13.00'	S89°47'21"E





# PORTEOS SUBDIVISION FILING NO. 5

PARCEL OF LAND LOCATED IN THE SOUTHWEST QUARTER OF SECTION 8 , TOWNSHIP 3 SOUTH, RANGE 65 WEST  
OF THE 6TH PRINCIPAL MERIDIAN, CITY OF AURORA, COUNTY OF ADAMS, STATE OF COLORADO  
SHEET 6 OF 7

## LEGEND

SQ. FT.

SQUARE FEET

SET #5 REBAR x 18" LONG  
WITH 1.5" PLASTIC CAP  
STAMPED PLS 36062

BENCHMARK

SECTION CORNER

UTILITY EASEMENT

FIRE LANE & UTILITY EASEMENT

DRAINAGE EASEMENT

FIRE LANE EASEMENT

PROPERTY LINE

SECTION LINE

RIGHT-OF-WAY LINE

UTILITY EASEMENT

SEE SHEET 7 OF 7 FOR LINE AND CURVE TABLES

Curve Table			
Curve #	Length	Radius	Delta
C32	60.95'	50.00'	69°50'54"
C33	30.32'	138.47'	12°32'47"
C34	27.49'	126.47'	12°27'15"
C35	46.33'	38.00'	69°50'54"
C36	47.75'	30.88'	88°36'26"

Line Table		
Line #	Length	Direction
L6	911.90'	N0°11'53"E
L7	26.00'	N0°12'39"E
L8	671.08'	N0°12'39"E
L39	554.00'	S0°12'39"W
L40	10.00'	S0°12'39"W
L93	191.95'	S89°47'21"E
L94	354.81'	N0°11'35"E
L95	167.15'	N90°00'00"E
L96	29.15'	S45°00'00"E
L97	180.85'	S0°00'00"E
L98	4.46'	N89°59'59"E
L99	26.00'	S0°00'00"E
L100	26.00'	S0°00'00"E
L101	26.00'	S0°00'00"E
L102	30.46'	N90°00'00"W
L103	196.09'	N0°00'00"E
L104	7.62'	N45°00'00"W
L105	130.47'	N90°00'00"W
L106	354.90'	S0°11'35"W
L107	217.96'	N89°47'21"W

Line Table		
Line #	Length	Direction
L108	61.72'	S89°59'22"E
L109	26.80'	S20°09'06"E
L110	12.00'	S84°38'25"W
L111	26.54'	N20°09'06"W
L112	61.72'	N89°59'22"W
L137	13.00'	N89°47'21"W
L138	10.00'	N0°12'39"E
L139	13.00'	S89°47'21"E
L166	808.67'	S0°03'57"W
L167	31.22'	S85°18'29"W

Line Table		
Line #	Length	Direction
L4	160.37'	N0°07'16"E
L5	1.45'	N90°00'00"E
L6	911.90'	N0°11'53"E
L41	537.27'	S0°12'39"W
L42	29.83'	S89°47'21"E
L43	10.00'	S89°47'21"E
L44	127.85'	S89°47'21"E
L60	272.44'	N89°47'24"W
L61	131.58'	S0°12'39"W
L140	10.89'	S0°12'39"W
L141	10.00'	N89°47'21"W
L142	10.89'	N0°12'39"E

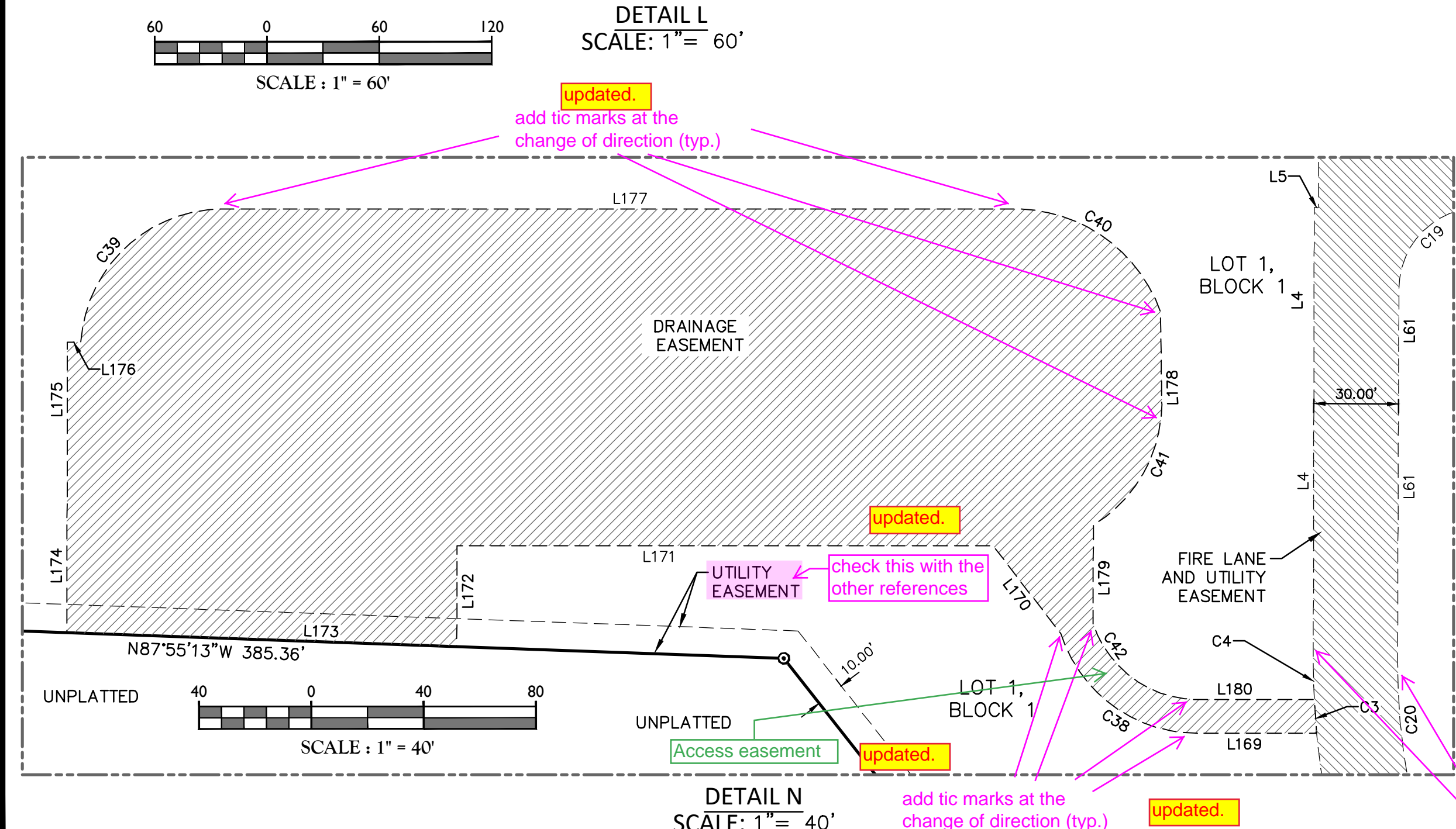
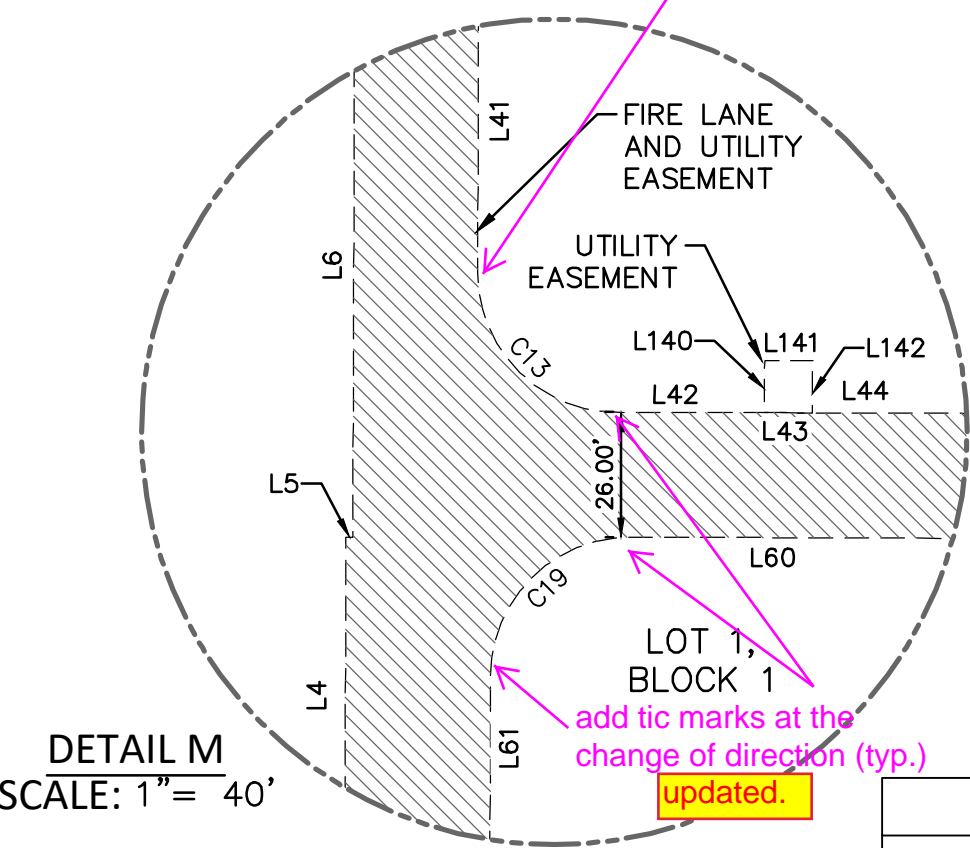
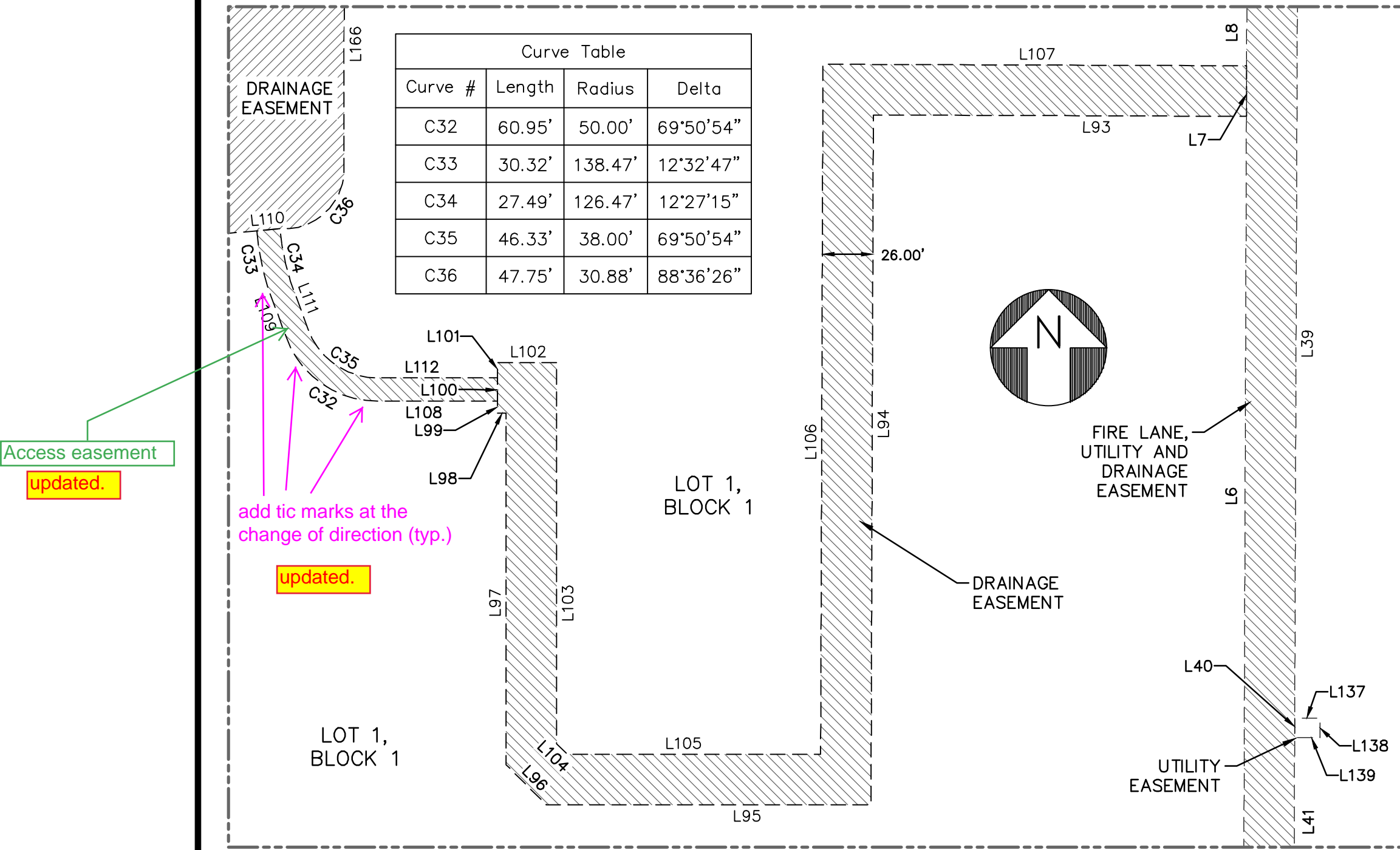
Curve Table			
Curve #	Length	Radius	Delta
C13	46.56'	29.03'	91°53'48"
C19	45.55'	29.00'	90°00'00"

Curve Table			
Curve #	Length	Radius	Delta
C3	12.03'	280.00'	2°27'41"
C4	14.94'	280.00'	3°03'24"
C19	45.55'	29.00'	90°00'00"
C20	125.33'	250.00'	28°43'26"
C38	64.32'	51.00'	72°15'55"
C39	76.11'	50.67'	86°03'44"
C40	65.70'	55.19'	68°12'36"
C41	51.69'	50.81'	58°16'40"
C42	49.11'	39.43'	71°21'46"

Line Table		
Line #	Length	Direction
L4	160.37'	N0°07'16"E
L5	1.45'	N90°00'00"E
L61	131.58'	S0°12'39"W
L169	42.47'	N89°59'08"W
L170	39.62'	N37°38'13"W
L171	190.84'	N90°00'00"W
L172	35.97'	S0°07'00"W
L173	138.95'	N87°55'27"W
L174	37.57'	N0°09'37"E
L175	65.86'	N0°04'58"E
L176	4.82'	S89°55'02"E
L177	284.15'	N90°00'00"E
L178	32.97'	S0°48'44"E
L179	35.04'	S0°12'39"W
L180	41.62'	S89°58'55"E



MASER CONSULTING  
7110 West Jefferson Ave.  
Suite 100  
Lakewood, CO 80235  
Phone: 303.731.6216  
Fax: 303.632.2445



PORTEOS SUBDIVISION FILING NO. 5

PARCEL OF LAND LOCATED IN THE SOUTHWEST QUARTER OF SECTION 8 , TOWNSHIP 3 SOUTH, RANGE 65 WEST  
 OF THE 6TH PRINCIPAL MERIDIAN, CITY OF AURORA, COUNTY OF ADAMS, STATE OF COLORADO  
 SHEET 7 OF 7

Line Table		
Line #	Length	Direction
L1	30.00'	N89°46'37"W
L2	20.10'	N0°11'33"E
L3	153.44'	N28°30'42"W
L4	160.37'	N0°07'16"E
L5	1.45'	N90°00'00"E
L6	911.90'	N0°11'53"E
L7	26.00'	N0°12'39"E
L8	671.08'	N0°12'39"E
L9	22.00'	S0°12'39"W
L10	479.56'	S89°47'21"E
L11	2.00'	N0°18'59"E
L12	170.96'	S89°47'10"E
L13	29.99'	S0°16'26"W
L14	115.93'	N89°47'23"W
L15	2.06'	S90°00'00"W
L16	11.64'	S0°07'40"W
L17	923.21'	S0°12'43"W
L18	10.00'	S0°12'39"W
L19	306.15'	S0°12'39"W
L20	24.55'	S89°47'21"E

Line Table		
Line #	Length	Direction
L21	26.00'	S0°12'39"W
L22	54.55'	N89°47'15"W
L23	16.00'	N89°47'58"W
L24	49.45'	N89°47'15"W
L25	4.50'	N0°12'39"E
L26	10.00'	N0°12'39"E
L27	11.50'	N0°12'39"E
L28	11.45'	S89°47'21"E
L29	661.13'	N0°12'39"E
L30	10.00'	N0°12'39"E
L31	506.36'	N0°12'39"E
L32	10.00'	N0°12'39"E
L33	63.51'	N0°12'39"E
L34	448.56'	N89°47'21"W
L35	61.40'	S0°12'39"W
L36	10.00'	S0°00'00"E
L37	390.10'	S0°12'59"W
L38	10.00'	S0°12'39"W
L39	554.00'	S0°12'39"W
L40	10.00'	S0°12'39"W

Line Table		
Line #	Length	Direction
L41	537.27'	S0°12'39"W
L42	29.83'	S89°47'21"E
L43	10.00'	S89°47'21"E
L44	127.85'	S89°47'21"E
L45	52.01'	S89°47'21"E
L46	39.31'	S89°47'21"E
L47	15.45'	S89°47'21"E
L48	119.44'	N0°12'39"E
L49	10.70'	N0°12'39"E
L50	34.24'	S89°47'58"E
L51	10.00'	S89°47'58"E
L52	85.90'	S89°47'58"E
L53	16.00'	S89°47'58"E
L54	4.98'	S89°47'58"E
L55	6.50'	S0°12'39"W
L56	23.35'	S45°12'53"W
L57	134.61'	N89°47'43"W
L58	214.14'	S0°12'39"W
L59	23.00'	N89°47'21"W
L60	272.44'	N89°47'24"W

Line Table		
Line #	Length	Direction
L61	131.58'	S0°12'39"W
L62	152.00'	S28°30'47"E
L63	20.69'	S0°11'27"W
L64	119.44'	N0°12'39"E
L65	75.16'	S89°47'21"E
L66	25.76'	N89°47'21"W
L67	123.42'	S0°12'39"W
L68	25.02'	S0°12'39"W
L69	39.31'	N89°47'21"W
L70	25.02'	N0°12'39"E
L71	41.36'	S0°12'39"W
L72	10.00'	N89°47'21"W
L73	41.36'	N0°12'39"E
L74	50.95'	S89°47'21"E
L75	10.00'	S0°12'39"W
L76	50.95'	N89°47'21"W
L77	84.61'	N0°12'02"E
L78	84.61'	S0°12'02"W
L79	26.00'	N89°47'21"W
L80	41.00'	N0°12'39"E

Line Table		
Line #	Length	Direction
L81	41.00'	N89°47'21"W
L82	26.00'	N0°12'39"E
L83	41.00'	S89°47'21"E
L84	8.00'	N0°12'39"E
L85	77.10'	N0°12'39"E
L86	10.00'	N0°12'39"E
L87	70.00'	N0°12'39"E
L88	76.97'	S89°47'21"E
L89	32.00'	S89°47'21"E
L90	57.93'	S89°47'21"E
L91	134.02'	N89°47'21"W
L92	287.10'	S0°12'39"W
L93	191.95'	S89°47'21"E
L94	354.81'	N0°11'35"E
L95	167.15'	N90°00'00"E
L96	29.15'	S45°00'00"E
L97	180.85'	S0°00'00"E
L98	4.46'	N89°59'59"E
L99	26.00'	S0°00'00"E
L100	26.00'	S0°00'00"E

Line Table		
Line #	Length	Direction
L101	26.00'	S0°00'00"E
L102	30.46'	N90°00'00"W
L103	196.09'	N0°00'00"E
L104	7.62'	N45°00'00"W
L105	130.47'	N90°00'00"W
L106	354.90'	S0°11'35"W
L107	217.96'	N89°47'21"W
L108	61.72'	S89°59'22"E
L109	26.80'	S20°09'06"E
L110	12.00'	S84°38'25"W
L111	26.54'	N20°09'06"W
L112	61.72'	N89°59'22"W
L113	31.75'	S89°36'46"E
L114	10.00'	S0°12'39"W
L115	31.82'	N89°36'46"W
L116	31.20'	S89°47'21"E
L117	10.00'	S0°12'39"W
L118	31.20'	N89°47'21"W
L119	14.00'	N89°47'21"W
L120	10.00'	N0°12'39"E

Line Table		
Line #	Length	Direction
L121	14.00'	S89°47'21"E
L122	46.09'	S89°46'15"E
L123	10.00'	S0°12'39"W
L124	46.09'	N89°46'15"W
L125	56.78'	S89°48'51"E
L126	18.00'	S0°06'12"W
L127	57.50'	N89°48'51"W
L128	13.00'	N89°47'21"W
L129	10.00'	N0°12'39"E
L130	13.00'	S89°47'21"E
L131	46.09'	S89°47'21"E
L132	10.00'	S0°12'39"W
L133	46.09'	N89°47'21"W
L134	20.70'	N89°47'21"W
L135	10.00'	N0°12'39"E
L136	20.70'	S89°47'21"E
L137	13.00'	N89°47'21"W
L138	10.00'	N0°12'39"E
L139	13.00'	S89°47'21"E
L140	10.89'	S0°12'39"W

Line Table		
Line #	Length	Direction
L141	10.00'	N89°47'21"W
L142	10.89'	N0°12'39"E
L143	177.65'	S0°12'39"W
L144	71.00'	S0°12'39"W
L145	32.00'	N89°43'41"W
L146	70.98'	N0°12'39"E
L147	177.63'	N0°12'39"E
L148	726.64'	N89°43'30"W
L149	133.83'	N0°00'29"E
L150	154.96'	S71°49'14"E
L151	7.55'	S69°38'22"E
L152	5.44'	S75°31'22"E
L153	7.31'	S81°17'50"E
L154	5.68'	S87°10'49"E
L155	18.60'	S89°45'08"E
L156	18.30'	S89°45'08"E
L157	32.00'	S89°45'08"E
L158	6.69'	S89°45'08"E
L159	448.78'	N89°18'39"E
L160	45.81'	S15°45'45"E

Line Table		
Line #	Length	Direction
L161	17.53'	S89°47'21"E
L162	44.52'	S0°12'40"W
L163	71.66'	S0°13'23"W
L164	324.68'	N89°46'07"W
L165	93.26'	S29°38'27"W
L166	808.67'	S0°03'57"W
L167	31.22'	S85°18'29"W
L168	992.14'	N0°12'39"E
L169	42.47'	N89°59'08"W
L170	39.62'	N37°38'13"W
L171	190.84'	N90°00'00"W
L172	35.97'	S0°07'00"W
L173	138.95'	N87°55'27"W
L174	37.57'	N0°09'37"E
L175	65.86'	N0°04'58"E
L176	4.82'	S89°55'02"E
L177	284.15'	N90°00'00"E
L178	32.97'	S0°48'44"E
L179	35.04'	S0°12'39"W
L180	41.62'	S89°58'55"E

Line Table		
Line #	Length	Direction
L181	7.03'	S0°12'39"W
L182	67.85'	S38°04'05"E
L183	369.84'	S0°12'39"W
L184	32.06'	N0°12'39"E
L185	160.00'	N89°47'21"W
L186	246.23'	S0°12'40"W
L187	25.39'	S89°49'18"E
L188	8.87'	N89°47'58"W
L189	246.23'	N0°12'40"E
L190	50.96'	N89°47'21"W
L191	23.00'	N0°13'44"E
L192	291.96'	S89°47'21"E
L193	256.78'	N0°12'39"E
L194	67.85'	N38°04'05"W
L195	7.03'	N0°12'39"E
L196	23.00'	S89°47'10"E

Curve Table			
Curve #	Length	Radius	Delta
C1	140.29'	278.05'	28°54'34"
C2	111.97'	280.00'	22°54'42"
C3	12.03'	280.00'	2°27'41"
C4	14.94'	280.00'	3°03'24"
C5	45.33'	52.00'	49°56'50"
C6	37.35'	52.15'	41°02'04"
C7	35.99'	27.00'	76°22'32"
C8	6.40'	29.00'	12°39'10"
C9	45.55'	29.00'	90°00'00"
C10	45.55'	29.00'	90°00'00"
C11	45.55'	29.00'	90°00'00"
C12	45.55'	29.00'	90°00'00"
C13	46.56'	29.03'	91°53'48"
C14	45.55'	29.00'	90°00'00"
C15	47.72'	52.00'	52°34'56"
C16	33.95'	52.00'	37°24'27"
C17	45.55'	29.00'	89°59'23"
C18	45.55'	29.00'	90°00'00"
C19	45.55'	29.00'	90°00'00"
C20	125.33'	250.00'	28°43'26"

Curve Table			
Curve #	Length	Radius	Delta
C21	154.72'	310.00'	28°35'49"
C22	45.56'	29.00'	90°01'07"
C23	81.68'	52.00'	90°00'00"
C24	45.55'	29.00'	90°00'00"
C25	45.55'	29.00'	90°00'00"
C26	45.55'	29.00'	90°00'02"
C27	45.55'	29.00'	90°00'00"
C28	45.55'	29.00'	90°00'00"
C29	43.55'	29.00'	86°02'45"
C30	81.68'	52.00'	90°00'00"
C31	19.27'	29.16'	37°52'40"
C32	60.95'	50.00'	69°50'54"
C33	30.32'	138.47'	12°32'47"
C34	27.49'	126.47'	12°27'15"
C35	46.33'	38.00'	69°50'54"
C36	47.75'	30.88'	88°36'26"
C37	56.36'	38.06'	84°50'02"
C38	64.32'	51.00'	72°15'55"
C39	76.11'	50.67'	86°03'44"
C40	65.70'	55.19'	68°12'36"

Curve Table			
Curve #	Length	Radius	Delta
C41	51.69'	50.81'	58°16'40"
C42	49.11'	39.43'	71°21'46"
C44	59.13'	88.50'	38°16'44"
C45	74.49'	111.50'	38°16'44"
C46	45.55'	29.00'	90°00'00"
C47	45.55'	29.00'	89°59'59"
C48	45.56'	29.00'	90°00'38"
C49	81.69'	52.00'	90°00'38"
C50	45.55'	29.00'	90°00'01"
C51	45.55'	29.00'	90°00'00"
C52	59.13'	88.50'	38°16'44"
C53	74.49'	111.50'	38°16'44"



MASER CONSULTING  
 7110 West Jefferson Ave.  
 Suite 100  
 Lakewood, CO 80235  
 Phone: 303.731.6216  
 Fax: 303.632.2445