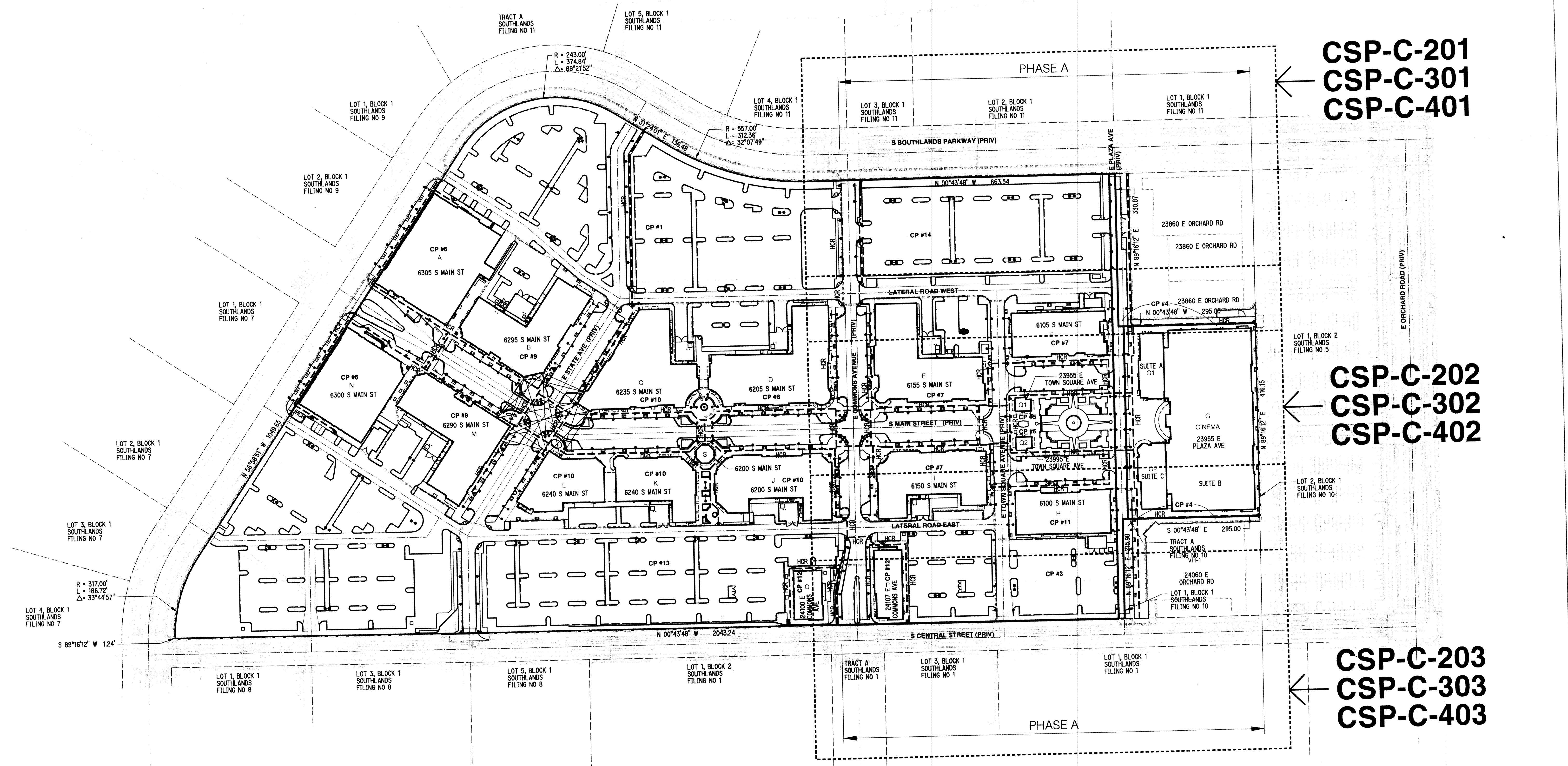


12/15/2006 11:31:39 AM JB (S:\WB_006\Civil\01031 ES WTS Mono.dwg) [S:\WB_006\Civil\01031 ES WTS Mono.dwg]



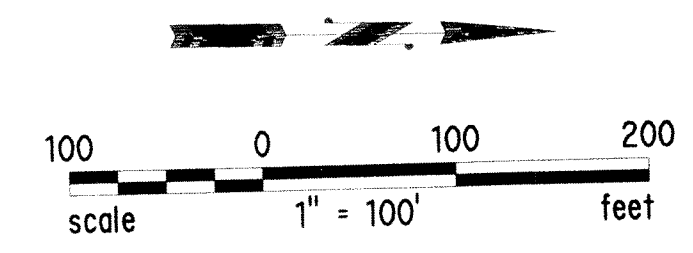
CSP-C-201
CSP-C-301
CSP-C-401

CSP-C-202
CSP-C-302
CSP-C-402

CSP-C-203
CSP-C-303
CSP-C-403

NOTES:

1. FOR PHASE A, THE EMERGENCY ACCESS ROUTES FOLLOW EAST COMMONS AVENUE IN THE EAST-WEST DIRECTION. IT ALSO LOOPS FROM EAST COMMONS AVENUE TO THE NORTH ALONG THE LATERAL ROADS, LOOPING AROUND EAST TOWN SQUARE AVENUE, EAST PLAZA AVENUE AND THE NORTH SIDE OF CINEMA IN THE EAST-WEST DIRECTION FROM SOUTH SOUTHLANDS PARKWAY TO SOUTH CENTRAL STREET PROVIDE EMERGENCY ACCESS ACROSS THE NORTH OF PHASE A.
2. FOR PHASE A, WATER SUPPLY LOOPING IS PROPOSED ALONG EAST COMMONS AVENUE AND EAST PLAZA AVENUE CONNECTING TO THE WATER MAINS ON SOUTH SOUTHLANDS PARKWAY AND SOUTH CENTRAL STREET. ADDITIONAL WATER SUPPLY LOOPING IS PROPOSED FROM EAST COMMONS AVENUE NORTH ALONG BOTH LATERAL ROADS AND AROUND EAST TOWN SQUARE AVENUE.



CONSULTANT:
MAGNUSSON KLEMENCIC ASSOCIATES
Structural & Civil Engineers
1301 Fifth Avenue, Suite 3200
Seattle, Washington 98101-2699
T: 206 292 1200 F: 206 292 1201
www.mka.com

OWNER:
ALBERTA DEVELOPMENT PARTNERS
5460 South Quebec Street, Suite 210
Englewood, CO 80111
T: 303 771 4004
F: 303 771 4086
www.albdev.com/

CALLISON
CALLISON ARCHITECTURE, INC.
1420 Fifth Avenue #2400
Seattle, Washington 98101-2343
T: 206 623 4646
F: 206 623 4625
www.callison.com

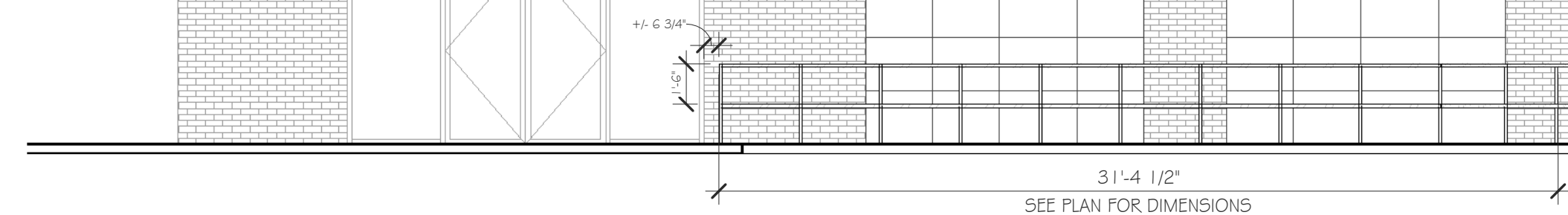
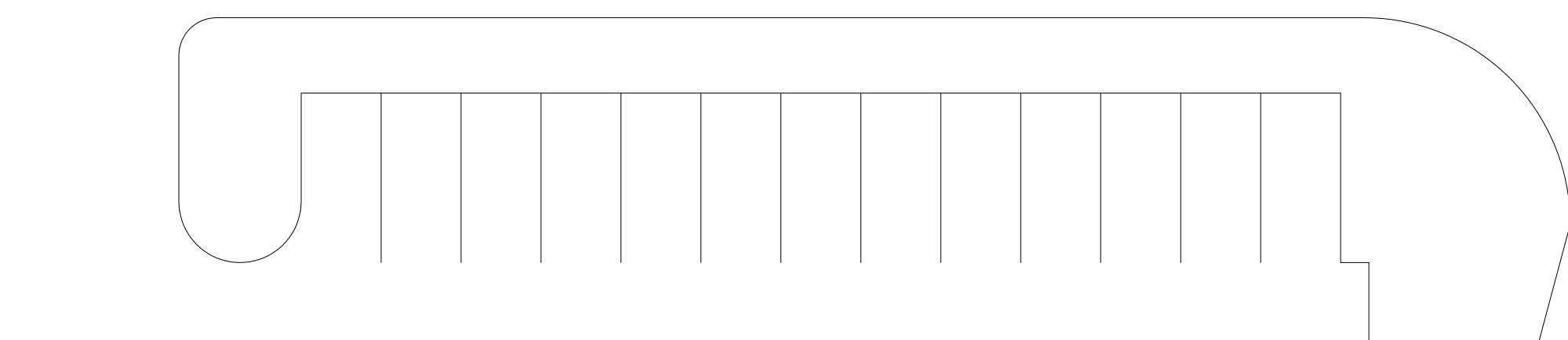
SOUTHLANDS
LIFESTYLE CENTER, PHASE A
E-470 and Smoky Hill Road
Aurora, CO 80012
PROJECT # 203183.00

ISSUED / REVISED	DATE	
CSP SUBMITTAL #2	1/06/05	SOUTHLANDS CONTEXTUAL
CSP SUBMITTAL #3	2/15/05	SITE PLAN FILING #11
CSP SUBMITTAL #4	3/17/05	APPLICATION PHASE A
CSP SUBMITTAL #5	4/19/05	OCTOBER 15, 2004
CSP SUBMITTAL #6	3/10/06	
CSP SUBMITTAL #7	4/12/06	
CSP SUBMITTAL #8	12/15/06	

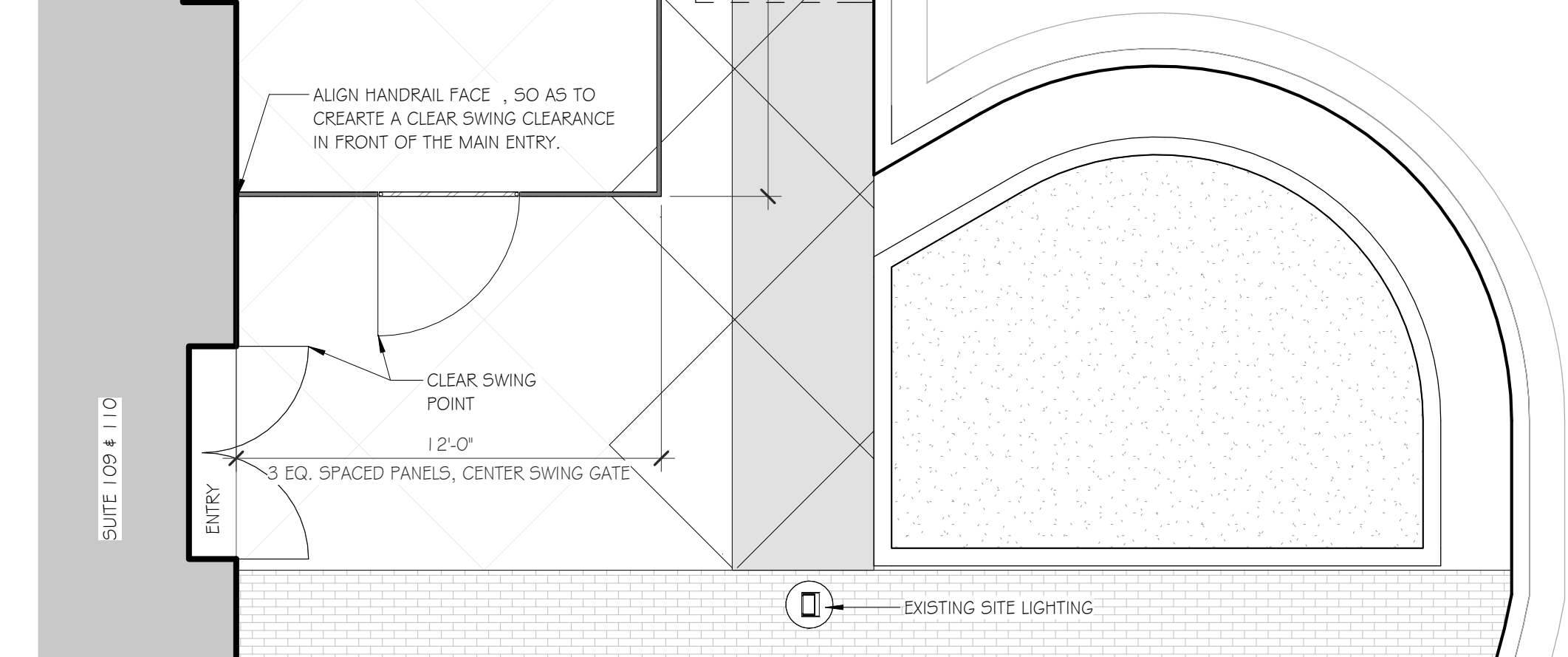
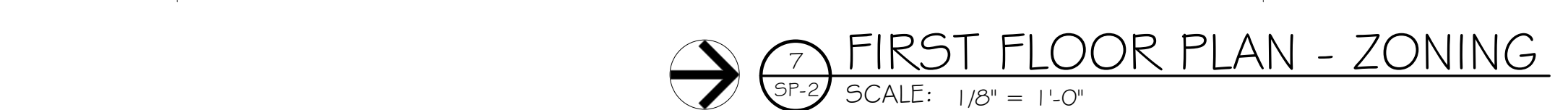
KEY PLAN

CSP-C-111

SOUTHLANDS LIFESTYLE CENTER AT SOUTHLANDS CSP NO 11 2004-6074-01



3 HANDRAIL ELEVATION
SP-2 SCALE: 3/16" = 1'-0"



5
SP-2

ENLARGED - PATIO PLAN

SCALE: 1/4" = 1'-0"