

# **SITE SAFETY AND EMERGENCY ACTION PLAN**

## **Crestone Peak Resources**



**District Office  
1801 California Street  
Denver, CO, 80202**

## **Spine G Waterline & Mustang Station Laterals**

**Address:** 28700 East 26<sup>th</sup> Ave.  
Aurora, Colorado, 80019

**Adams/Arapahoe County, Colorado**

**Proposed Start Date: 3rd Quarter 2021**

## **Table of Contents**

Section 1 – Signature Page

Section 2 – Site specific information

- a. Site Safety Requirements
- b. Emergency muster/assembly point(s)
- c. 911 Address and GPS coordinates
- d. Site description
- e. Nearby schools and other High Occupancy Buildings
- f. Directions to project locations
- g. Location of SDS sheets
- h. Location of sign-in sheets, JSA, safety forms

Section 3 – Maps & Documents

- a) Site Map
  - i. 1,000' Buffer zones and location of nearest Building Unit(s)

Section 4 – List of Emergency Contacts

- a) Crestone Peak Resources contact information.
- a) Crestone Peak Resources community/media relations contact information
- b) First responder contact information
- c) Regulatory contact information
- d) Nearest hospital
- e) Spill response organization contact information.

Section 5 – Spill Response and Reporting

- a) Spill Response
- b) Spill Reporting

Section 6 – Reportable storage quantity's

- a) Reportable quantities
- b) Tier II Reporting

Section 7 – Evacuation Information

- a) Evacuation plan procedures (public)

Section 8 – Coordination with First Responder Agencies

**SECTION 1**  
**SITE SPECIFIC INFORMATION**

<b>Crestone Peak Resources</b>			
<b>Name</b>	<b>Signature</b>	<b>Title</b>	<b>Date</b>
<b>Fire District</b>			
<b>Name</b>	<b>Signature</b>	<b>Title</b>	<b>Date</b>

**Adams/Arapahoe County Office of Emergency Management**  
*Digitally Signed*



## **SECTION 2**

### **SITE SPECIFIC INFORMATION**

**a) Site Safety Requirements and General Information**

The minimum personal protective equipment (PPE) to enter any Crestone Peak Resources production location includes hard hat, safety glasses, safety toe boots, fire resistant clothing (FRC), and a 4-gas monitor. All contractors and visitors are responsible for providing their employees with the appropriate training on and use of PPE while on Crestone Peak Resources locations. In addition, all contract personnel entering a Crestone Peak Resources location to perform work must understand and abide by Crestone Peak Resources' contractor expectations relating to environmental, health, and safety requirements.

The primary hazards that any person must be aware of while on a Crestone Peak Resources pipeline project is limited due to this being a new build. Hazards increase when working close to existing gas pipelines and will be identified on the daily JSA. Known hazards are open trenches, large construction equipment, welding and cutting, overhead loads, and other moving vehicles. These hazards can vary depending on the work being performed daily.

**b) Emergency Muster/Assembly point(s)**

**Spine G Waterline & Mustang Station Laterals**

Muster points will be changing as the work progresses daily. Muster locations will be identified during all safety briefings and established on the JSA's.

**c) 911 Address**

**Legal Description** – Start Sec 34, T3S R65W, End Sec 3 T4S R65W

**Address** – 28700 East 26<sup>th</sup> Ave. Aurora, Colorado, 80019

**d) Site description**

Crestone Peak Resources Midstream LLC (Crestone), the applicant, plans to install equipment on the Facility Pad of the Kiser Water Storage Pond to be constructed on Crestone Peak Resources Midstream LLC property in the Northeast 1/4 of Section 34, T3S, R65W, 6th P.M. The Kiser Water Storage Pond will be used to store fresh water for use in oil and gas operations. Reference the Conditional Use Permit (CUP) Application RCU2020-00040 for the Kiser Water Storage Pond. The Facility Pad will be a 100' x 200' graded pad, with a 1% slope, located on the north side of the pond. The facility pad will consist of equipment necessary to transfer water from the pond into a 24" buried pipeline that will run along the west property line. Water from the pond will be pumped into a launcher/receiver located near the southwest corner of the facility pad, which will be connected to the 24" pipeline west of the facility pad. The 24" pipeline will be

located within a 20' permanent easement along the east edge of the west property line. Water from various sourcing, including municipal raw water, reusable water, and well water, will be brought into the Kiser Pond via a permanent pipeline bore under Interstate 70, the 24" pipeline, and temporary layflat lines from a launcher/receiver on the facility pad to a riser pipe connected to the pond's inlet/outlet structure. Water pumped into the 24" pipeline from the Kiser Pond will initially be used in Crestone's oil and gas operations located south of Interstate 70 via the permanent pipeline bore under Interstate 70 previously mentioned but will eventually also provide water to Crestone's operations north of the Interstate. Water usage transferred from the pond per day is anticipated to be approximately 4,057,200 gal (96,600 bbls) at a maximum rate of 3,500 gal/min (83 bbls/min).

#### Mustang Station Laterals

The Mustang Station Laterals proposes two twelve (12)-inch diameter, steel, natural gas pipelines within a proposed fifty (50)-foot wide permanent easement, commencing north from the existing Spine G North for 915 feet, then proceeding west to Mustang Booster Station. In addition to the two gas lines, a twenty-four (24)-inch diameter, PVC, waterline is proposed in the portion of the easement heading north.

#### e) **Nearby schools and other High Occupancy Buildings**

No Schools or high occupancy buildings near this project

#### f) **Directions to Project Locations**

##### **Spine G Waterline & Mustang Station Laterals**

This will range from Haymount rd to the south up to 26<sup>th</sup> avenue on the north.

#### g) **Location of SDS sheets**

Depending on the operations taking place on location, the chemicals that may be present will vary. Regardless, hazard communication is a critical safety measure and Safety Data Sheets (SDS's) will be available from the Company Representative present or the contractor performing work on location.

#### h) **Sign-In Sheets, JSAs, and Safety Forms**

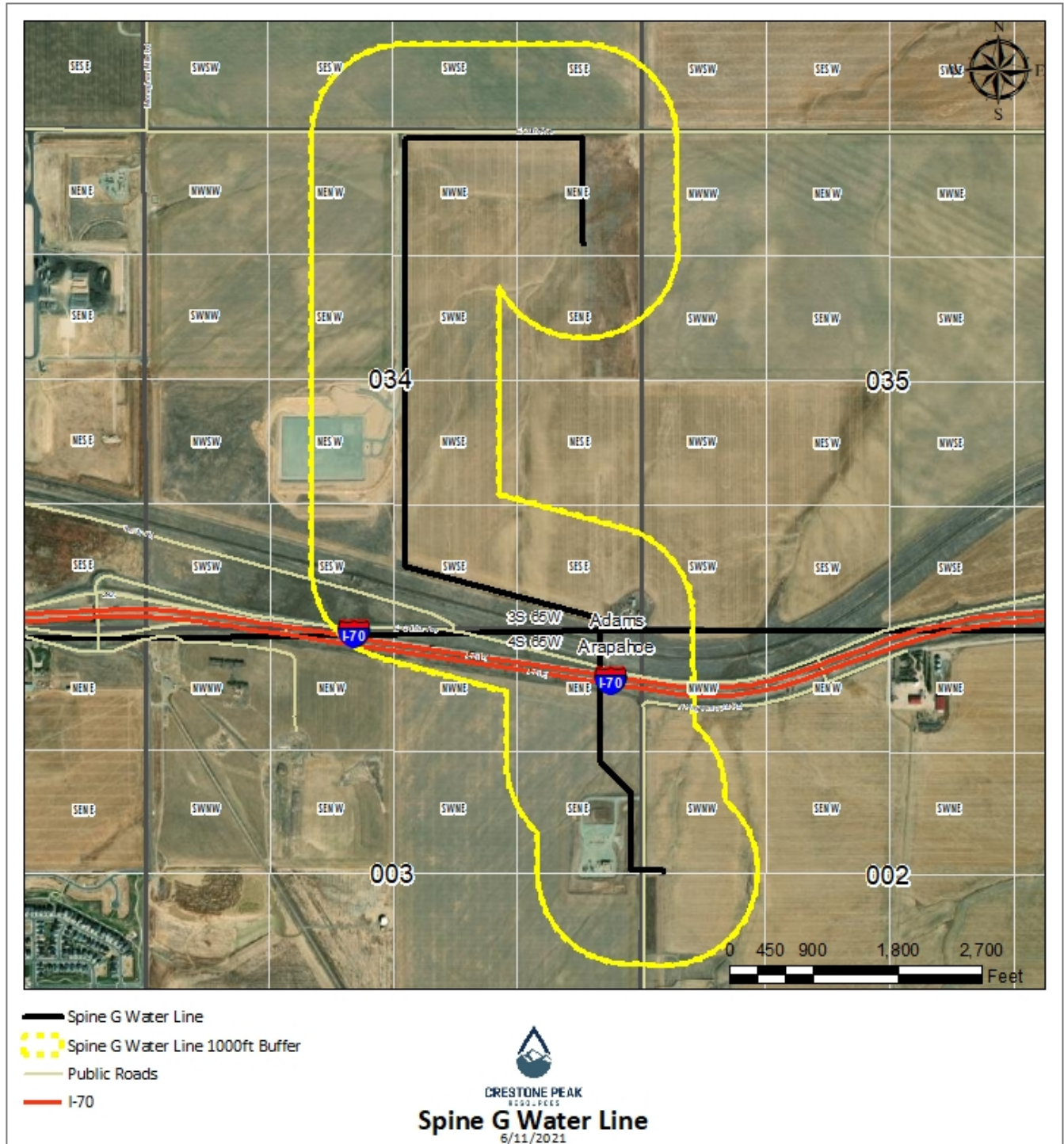
During construction activities all employees and approved visitors to the **Spine G Waterline & Mustang Station Laterals** will be required to sign the contractor JSA at the construction location where they will be provided with a detailed safety briefing of current operations and all safety precautions that must be adhered to while on location. In addition, all who enter the location must also sign out upon their departure. Contractors are required to account for all persons entering or leaving location during active operations and in the event of an incident.

No unauthorized personnel will be allowed on location without first contacting a company representative. JSA's are written every day, per task, or per shift if work crews are working 24/7 and can be found on location. This is performed by each contractor and kept in their files for review.

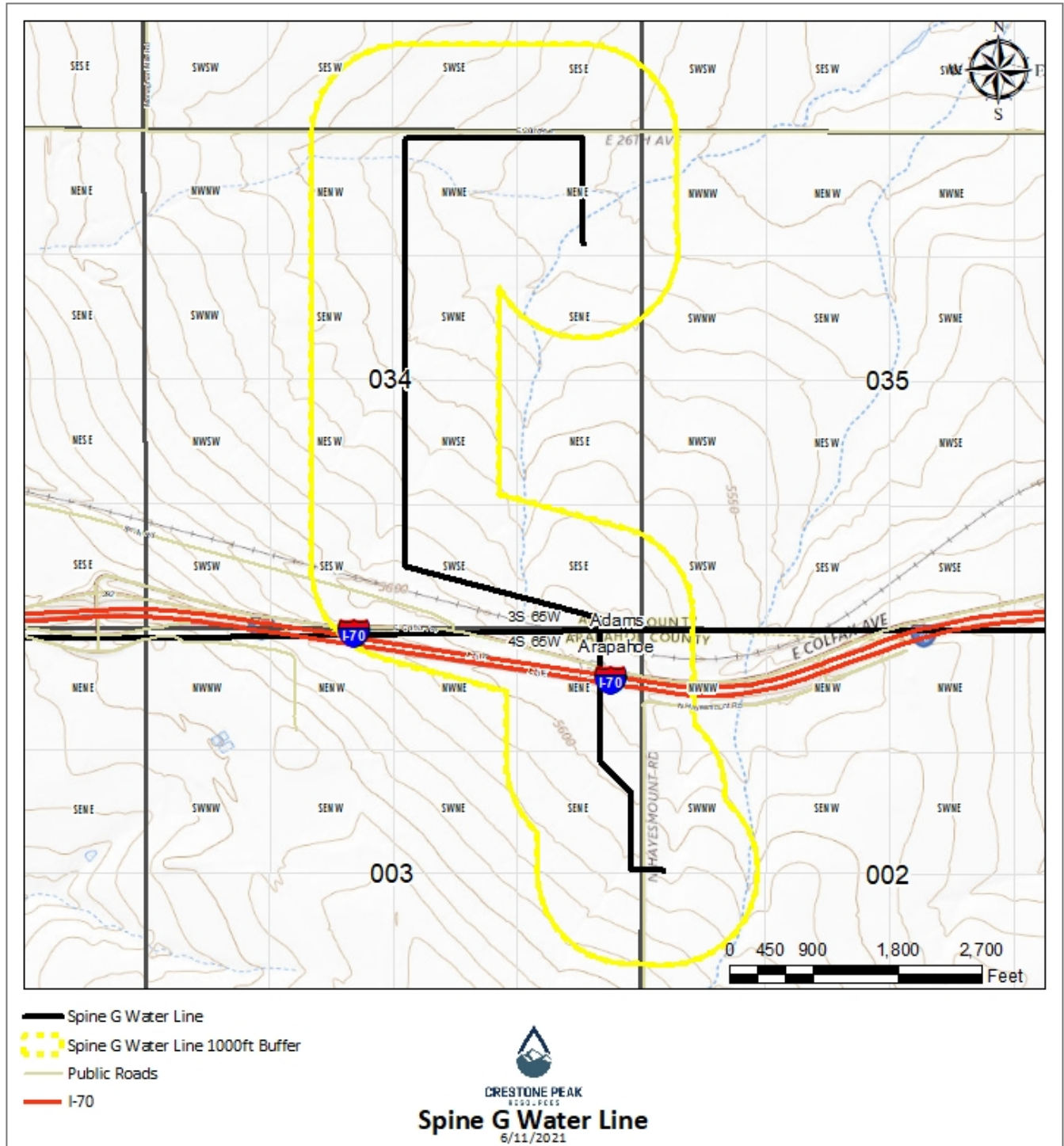
### Section 3

#### Spine G Waterline

#### 1,000' Buffer

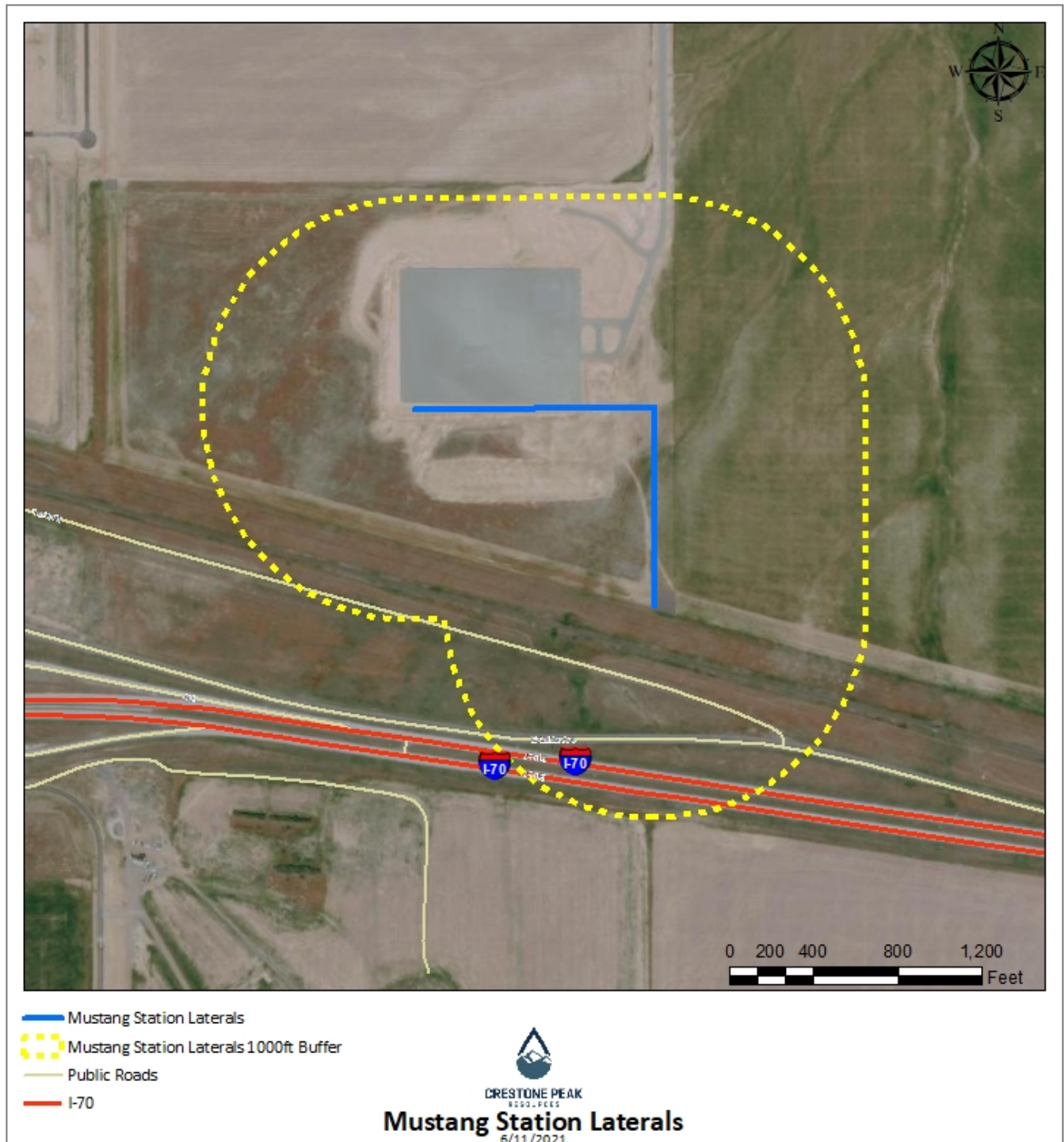


# Spine G Waterline 1,000' Buffer



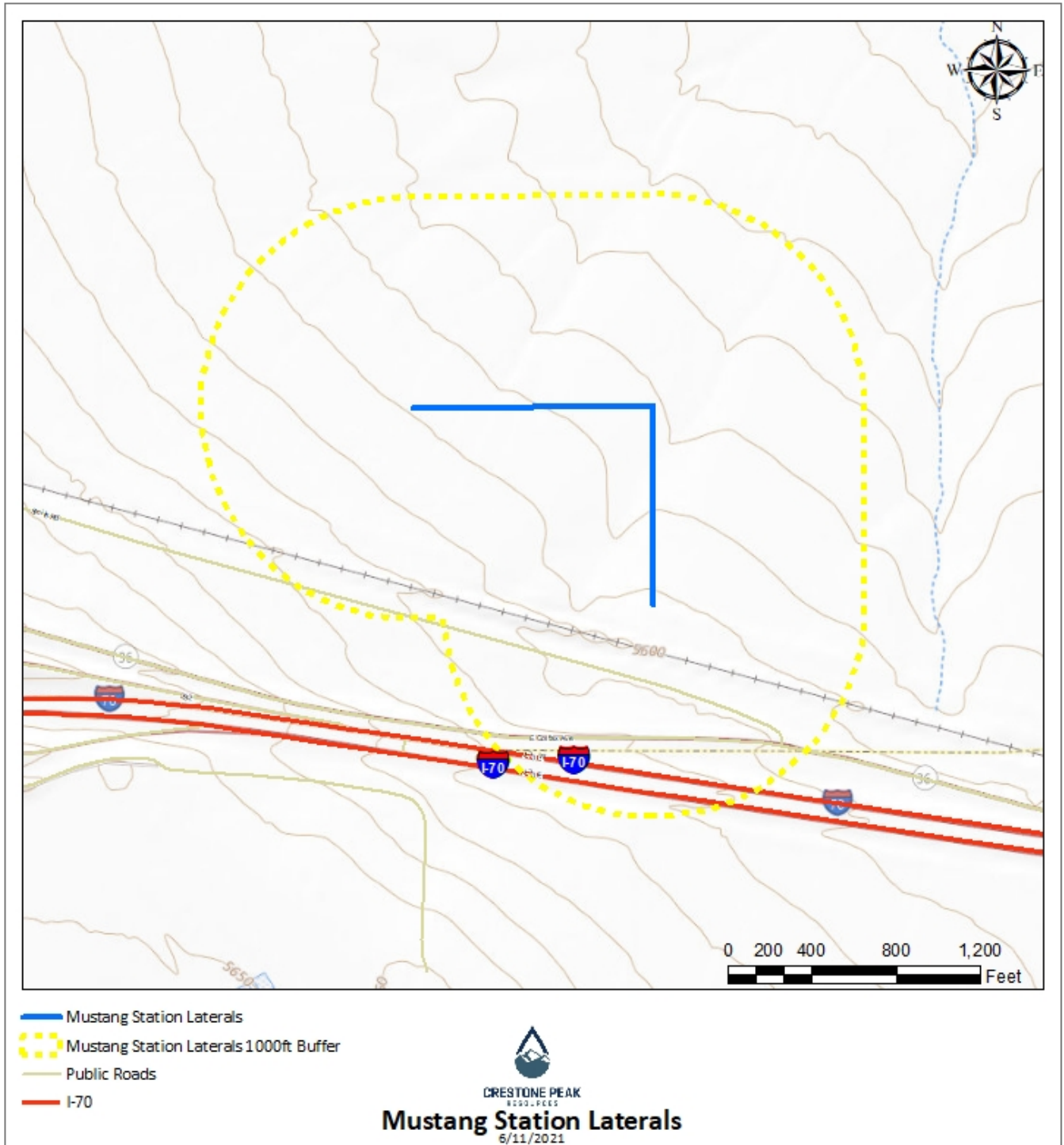


Mustang Station Laterals  
1,000' Buffer





**Mustang Station Laterals**  
**1000 Ft Buffer**



**Section 4**  
**List of Emergency Contacts**

**a) Crestone Peak Resources**

Name	Office Phone	Emergency/Cell

**b) Crestone Peak Resources community/media relations**

Name	Office	Cell Phone

**c) First Responders**

Name	Emergency	Office Number
Aurora Fire Protection District	911	303-326-8999
Bennett/Watkins Fire Protection	911	303-644-3572
Arapahoe County Sheriff	911	303-795-4711
Adams County Sheriff	911	303-655-3230
Colorado State Highway Patrol	911	970-506-4999

**d) Regulator Contacts**

Name	Office Phone	Cell Phone
COGCC	303-894-2100	none
CDPHE	877-518-5608	none
Colorado Parks & Wildlife	303-291-7227	none
National Response Center	800-424-8802	

**e) Medical Facilities**

Name	Office Phone	Address
University of Colorado Hospital Level 1 Trauma	720-848-000 (911)	12605 E. 16 <sup>th</sup> Avenue Aurora Co 80045
Medical Center of Aurora Level 2 Trauma	303-695-2600 (911)	1501 S Potomac St, Aurora Co 80012

**f) Spill Response Organization**

Name	Office Phone	Cell Phone

**g) Fire, explosion, associated with loss of well control.**

Name	Office Phone
Aurora Fire Protection District	303-326-8999
Bennett/Watkins Fire Protection	303-644-3572
Wild Well Control, Inc.	281-353-5481
Northern Colorado Medical Facility (Burn Unit)	970-810-4121
Arapahoe County Office of Emergency Management	720-874-3804
Adams County Office of Emergency Management	720-523-6601

**h) Government Agencies**

Name	Office Phone
Arapahoe County Sheriff's Office	911 or 303-795-4711
Adams County Sheriff's Office	911 or 303-795-4711
COGCC	303-894-2100
CDPHE	877-518-5608
Arapahoe County OEM	720-874-3804
Adams County OEM	720-523-6601

**i) Railroad Emergency Response**

Name	Office Phone
Union Pacific Railroad	888-877-7267

## **Section 5**

### **Spill Response and Clean Up**

#### **a) Spill Response**

There are multiple types of hydrocarbons which can be released/spilled during pipeline construction. Refined petroleum products such as diesel, gasoline, and motor oil spills are less common, but still equally important to mitigate. If a spill is found reportable, it will be mitigated in accordance with Colorado Oil and Gas Conservation Commission (COGCC) and Colorado Department of Public Health and Environment (CDPHE) guidelines.

Once a release has been identified, it will be immediately stopped and contained if possible and is safe to do so. When containing a spill; pig blankets, snakes, absorbent materials, or earthen berms will be constructed around the release to keep material from spreading. These materials will be provided by third party contractors and kept on-site. Diligent efforts will be made to minimize contact with live vegetation or open water if release is outside of secondary containment structures.

In the event of a large incident requiring outside assistance, Crestone Peak Resources has contracted with Apex who possesses a working knowledge of oil and gas operations, emergency response and Incident Command. Once notified Apex personnel can be on location from 1 to 2 hours.

#### **b) Spill Reporting**

What determines a reportable spill and to whom does the report go?

- A spill/release will be reported to the COGCC if released material is property of Crestone Peak Resources and meets the COGCC reporting thresholds (see below), an example would be crude oil released from a separator or produced water from a water vault.
- A spill/release will be reported to the Adams/Arapahoe County LEPC if released material is property of Crestone Peak Resources and meets the COGCC reporting thresholds (see below),
- A spill/release will be reported to the CDPHE if released material is in the custody of a third party for spills that meet CDPHE reporting thresholds, are of any size that impact or threaten to impact waters of the state, a residence or occupied structure, livestock or public byway. An example would be an oil hauler over filling a truck and spills product onto the ground next to a flowing irrigation ditch.

Spills are reportable to the COGCC in the following circumstances:

1. the spill or release impacts or threatens to impact any waters of the state, a residence or occupied structure, livestock, or a public byway.
2. a spill or release in which 1 barrel or more is released outside of berms or other secondary containment; or
3. any spill or release of 5 barrels or more. If the spill impacts or threatens to impact waters of the state (which include surface water, ground water and dry gullies or storm sewers leading to surface water), it must also be reported immediately to CDPHE (25-8-601 CRS).
4. Petroleum releases of 25 gallons or more

Once a spill is determined reportable, there is a 24-hour deadline to make initial notification to the COGCC or CDPHE depending on product ownership. Spills/releases in the custody of Crestone Peak Resources will be reported by a Company representative. Spills/releases in the custody of a third party will be reported by the responsible company's EHS Department to the appropriate agency and to Crestone Peak Resources.

These regulatory guidelines will be strictly followed by Crestone Peak Resources and any contractors operating under Crestone Peak Resources guidance during all activities.

## **Section 6**

### **Reportable quantities**

#### **a) Reportable quantities**

Mandated by Section 312 of the Emergency Planning and Community Right-To-Know Act (EPCRA) – also known as SARA Title III – the Tier II form captures information about the types, quantities, and locations of hazardous chemicals at a given facility. The form also lists contact information for the facility's designated emergency point-of-contact.

Any facility that is required to maintain MSDSs (or SDSs) under the Occupational Safety and Health Administration (OSHA) regulations for hazardous chemicals stored or used in the workplace.

Facilities with chemicals in quantities that equal or exceed the lists of lists thresholds must report.

- Propane, benzene, propene, and methane are on the lists and are known to be in crude oil. In addition, diesel is on the lists and may be stored on sites during construction.

#### **b. Reportable requirements**

If your facility will meet the requirements under 40 CFR, you must submit your Tier II report to the state every year before March 1<sup>st</sup>.

These regulatory guidelines will be strictly followed by Crestone Peak Resources and any contractors operating under Crestone Peak Resources guidance during all activities.



## **Section 7**

### **Evacuation Information**

**a. Evacuation Plan Procedures (public)**

The procedure to be used in alerting nearby persons in the event of any occurrence that could pose a threat to life or property will be arranged and completed with public officials in detail.

In the event of an actual emergency, the following steps will be immediately taken:

1. The Crestone Peak Resources representative will immediately notify proper authorities, including the sheriff's office, highway patrol, and any other public officials as described above and will enlist their assistance in warning residents and transients in the calculated radius of exposure.
2. The Crestone Peak Resources will coordinate with local authorities to warn residents' down-wind of the location and within radius of exposure from the well site. Additional evacuation zones may be necessary as the situation warrants.
3. The Crestone Peak Resources representative will coordinate with appropriate emergency personnel to divert traffic in the vicinity away from the potentially dangerous area. No trespassing and warning signs will be posted at the entrance to the well site. The contract company will monitor essential and non-essential traffic on-site.
4. General:
  - a. The area included within the radius of exposure is the zone with the maximum potential hazard. When it is determined that conditions exist which create an additional area (beyond the initial zone of maximum potential hazard) vulnerable to possible hazard, public areas in the additional hazardous area will be evacuated.
  - b. In the event of a disaster, after the public areas have been evacuated and traffic stopped, it is expected that local civil authorities will have arrived and within a few hours will have assumed direction of and control of the public, including all public areas. Crestone Peak Resources will fully cooperate with these authorities and will exert every effort by careful advice to such authorities to prevent panic or rumors.
  - c. Crestone Peak Resources will dispatch appropriate personnel to the disaster site as soon as possible. The company's personnel will cooperate with and provide such information to civil authorities as they might require.

## **Section 8**

### **Coordination with First Responder Agencies**

- a) Crestone Peak Resources will communicate site pipeline construction, Production Turn-In-Line dates to the Adams/Arapahoe County Office of Emergency Management for coordination/communication with local first responders. These start dates will be provided a minimum of 7 business days prior to commencement or change in oil and gas development operations.
- b) In the event of an emergency requiring First Responders, Unified Command will be established between the Crestone Peak Resources appointed company man on location and First Responders present. Unified Command post will be established based on conditions present at time of incident.
- c) While foam is not currently supplied for oil and gas emergency response, Crestone Peak Resources is an active member of Colorado Preparedness and Response Network (CPRN), and a solution is being sought thorough a cooperative effort including other operators, First Responders and Adams/Arapahoe County. Crestone Peak Resources has a source of foam sitting at our Hub Facility with an hour response time to the construction area. While a water source is not feasible to be on site during construction activities, Crestone could supply water through water transports from our other existing drilling and completion activities and working with responders will coordinate delivery times during the emergency. Logistics are not available based on the unknown potential emergencies and can only be applied with the known facts should an emergency happen.
- d) Crestone Peak Resources EHS representative and first responders identified in this Site Safety and Emergency Action Plan have reviewed this plan and discussed coordination efforts in the event of an emergency requiring first responder assistance.