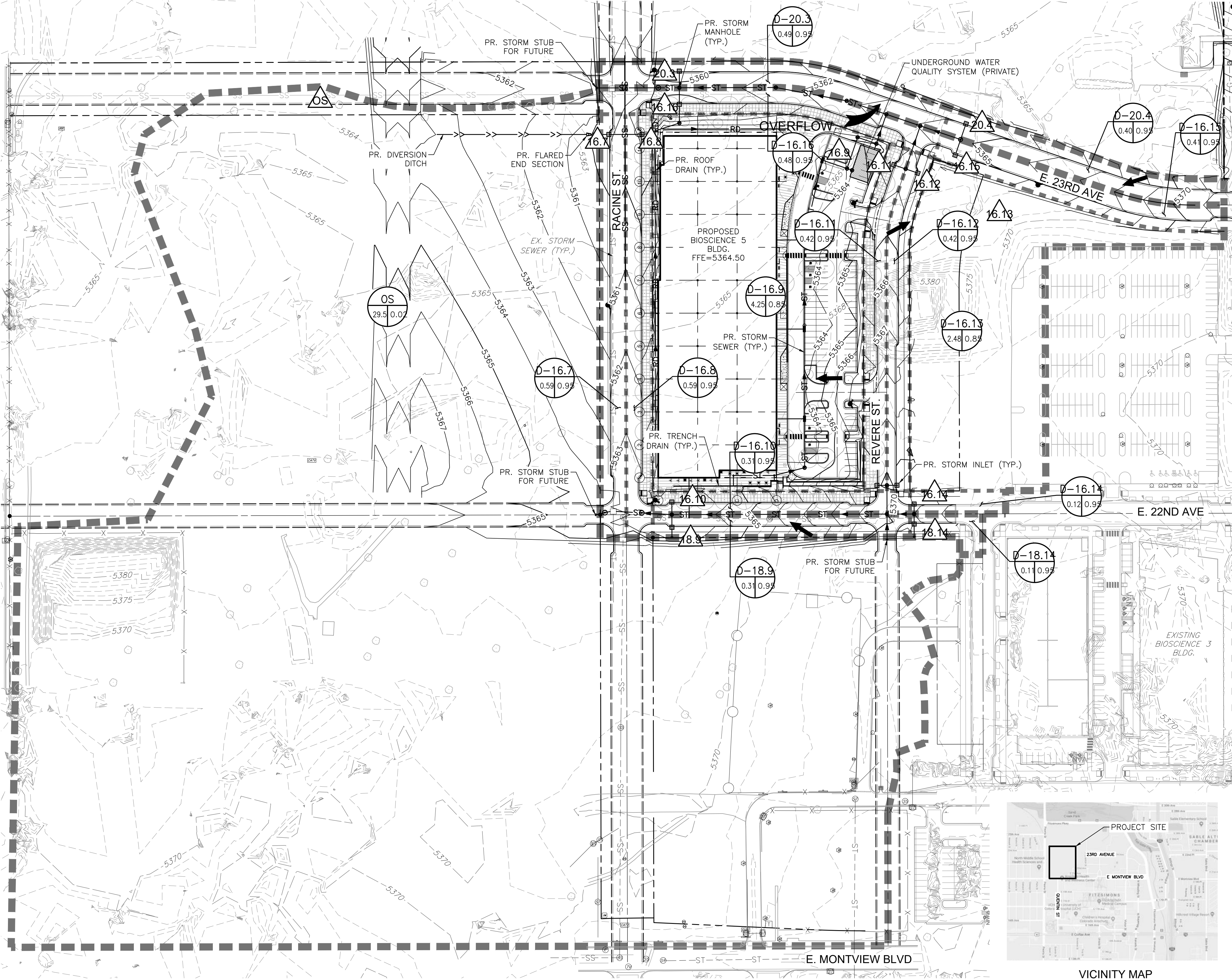


PLOT DATE: Friday, February 14, 2020 2:26 PM LAST SAVED BY: NKONTOUR
DRAWING LOCATION: G:\18.0646-FITZSIMMONS INNOVATION COMMUNITY - INF. PHASE 1\PLANS\CDs

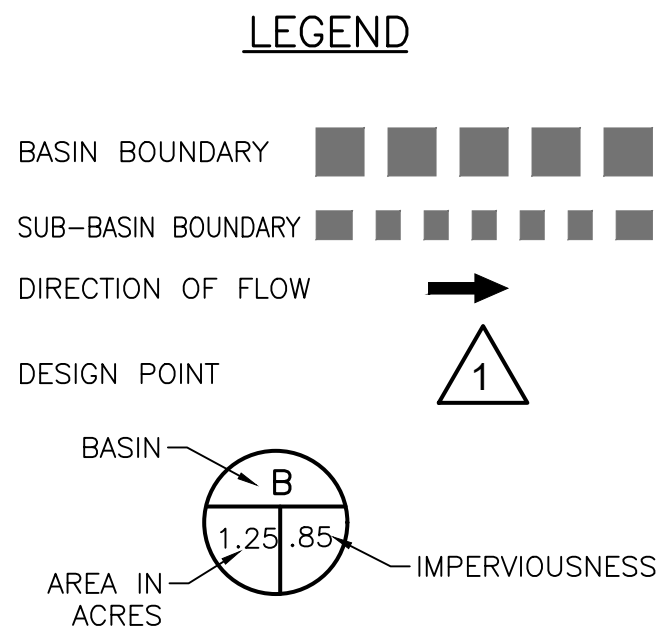


BASIS OF BEARING AND BENCHMARK:
BENCHMARK
ELEVATION ARE BASED ON A THE CITY OF AURORA BENCHMARK NUMBER 356736NW001, A 3" BRASS CAP STAMPED "C.O.A. BM 5-20B" LOCATED AT THE SOUTHEAST CORNER OF PEORIA AND FITZSIMONS PARKWAY ON THE NORTHEAST CORNER OF A 20 FEET WIDE INLET.

ELEVATION = 5353.555 (NAVD 1988)

BASIS OF BEARING
BEARINGS ARE BASED ON THE CITY OF AURORA NAD83 STATE PLANE COORDINATE SYSTEM (ZONE 502) BEARING OF N0°04'03"E ALONG THE WESTERLY LINE OF THE NORTHWEST QUARTER OF SECTION 36, T3S, R67 W OF THE 6TH P.M. BEING MONUMENTED BY A FOUND 3" BRASS CAP PLS # 16419 IN RANGE BOX AT THE NORTHWEST CORNER AND A FOUND 3" BRASS CAP PLS # 16419 IN RANGE BOX AT THE WEST QUARTER CORNER.

BASIS OF COORDINATES
PROJECT COORDINATES ARE BASED ON NAD 83 COLORADO CENTRAL ZONE5 02 COORDINATES MODIFIED USING A COMBINED SCALE FACTOR OF 0.9997472132 AND SUBTRACTING 1,000,000 FROM THE NORTING AND 3,000,000 FROM THE EASTING

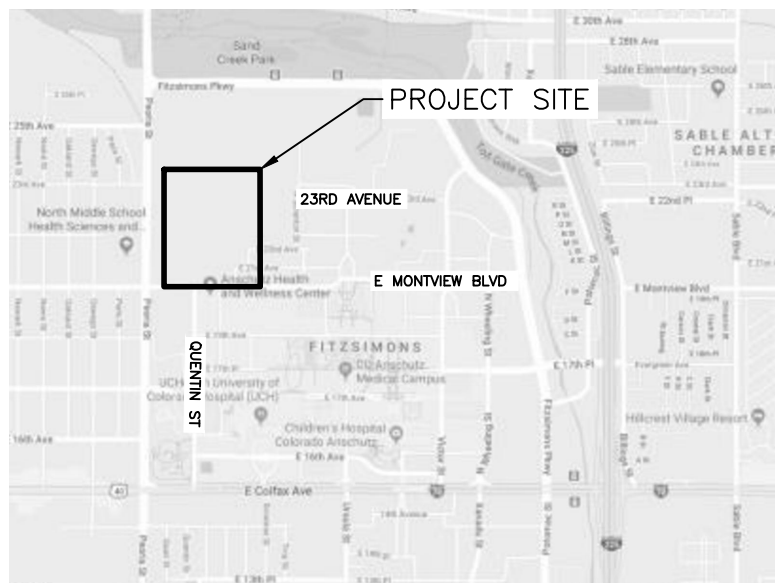


NOTES:

1. CITY OF AURORA PLAN REVIEW IS FOR GENERAL CONFORMANCE WITH CITY OF AURORA DESIGN CRITERIA AND THE CITY CODE. THE CITY IS NOT RESPONSIBLE FOR THE ACCURACY AND ADEQUACY OF THE DESIGN, OF DIMENSIONS AND ELEVATIONS WHICH SHALL BE CONFIRMED AND CORRELATED AT THE JOB SITE. THE CITY OF AURORA, THROUGH THE APPROVAL OF THIS DOCUMENT, ASSUMES NO RESPONSIBILITY FOR THE COMPLETENESS AND/OR ACCURACY OF THIS DOCUMENT.

2. ALL PROPOSED STORM SEWER IS PUBLIC AND SIZED FOR THE 100-YEAR DESIGN STORM UNLESS NOTED OTHERWISE.

3. THE DEVELOPER SHALL HAVE A LICENSED PROFESSIONAL ENGINEER CERTIFY EACH STORMWATER DETENTION POND AND/OR WATER QUALITY BMP IS BUILT ACCORDING TO THE APPROVED PLANS AND SPECIFICATIONS AND THE REQUIRED DETENTION VOLUME, INCLUDING THE WQCV WHEN USED, IS MET. THE CERTIFICATION SHALL ALSO VERIFY ALL PERTINENT DIMENSIONS, ELEVATIONS, REQUIRED OUTLET ORIFICE PLATES FOR DETENTION AND WQCV AND OTHER PERMANENT BMPS REQUIREMENTS ARE INSTALLED PER THE APPROVED PLANS AND SPECIFICATIONS, AND SHALL SHOW THE AS-BUILT VOLUMES FOR THE 100-YEAR, 10-YEAR STORM EVENTS, AND FOR THE WQCV AND OTHER PERTINENT DIMENSIONS, ELEVATIONS AND CAPACITY REQUIREMENTS ASSOCIATED WITH THE WQ BMP USED. THE CERTIFICATION SHALL BE PROVIDED TO THE CITY OF AURORA ENGINEERING CONTROL SECTION SENIOR ENGINEER BEFORE A CERTIFICATE OF OCCUPANCY WILL BE ISSUED.



VICINITY MAP
SCALE: 1"=1000'

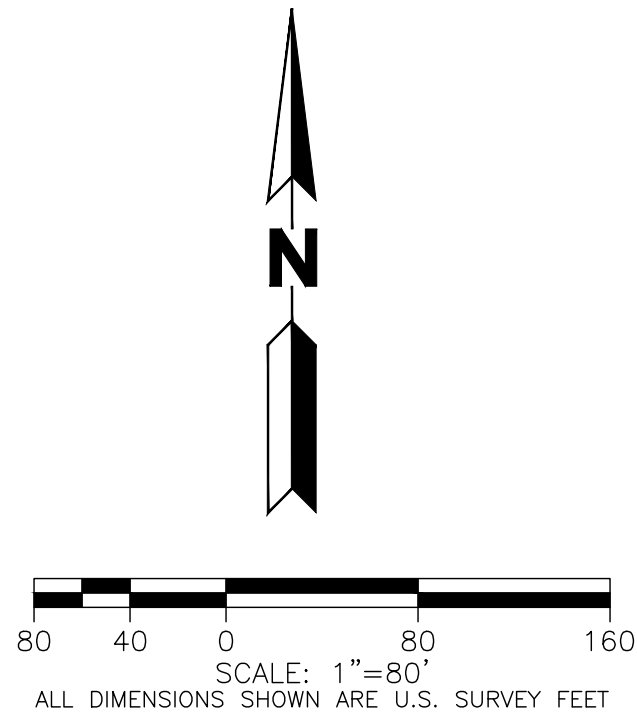


CALL 811 2-BUSINESS DAYS IN ADVANCE BEFORE YOU DIG, GRADE OR EXCAVATE FOR MARKING OF UNDERGROUND MEMBER UTILITIES

MARTIN/MARTIN ASSUMES NO RESPONSIBILITY FOR UTILITY LOCATIONS. THE UTILITIES SHOWN ON THIS DRAWING HAVE BEEN PLOTTED FROM (PROVIDED) ASCE (38) UTILITY QUALITY LEVEL D (Q_u) AVAILABLE INFORMATION. IT IS, HOWEVER, THE CONTRACTORS RESPONSIBILITY TO FIELD VERIFY THE SIZE, MATERIAL, HORIZONTAL AND VERTICAL LOCATION OF ALL UTILITIES (DEPICTED OR NOT DEPICTED) PRIOR TO THE COMMENCEMENT OF ANY CONSTRUCTION.

RUNOFF SUMMARY					
BASIN	DESIGN POINT	AREA (ACRES)	% IMP.	C100	Q100 (CFS)
D16.1	16.1	7.29	85.0%	0.80	35.02
D16.2	16.2	0.36	95.0%	0.89	2.67
D16.3	16.3	0.46	95.0%	0.89	3.24
D16.4	16.4	0.46	95.0%	0.89	3.24
D16.5	16.5	3.56	85.0%	0.80	17.64
D16.6	16.6	0.27	95.0%	0.89	2.15
D16.7	16.7	0.59	95.0%	0.89	3.85
D16.8	16.8	0.59	95.0%	0.89	3.85
D16.9	16.9	4.25	85.0%	0.80	30.01
D16.10	16.1	0.31	95.0%	0.89	2.47
D16.11	16.11	0.42	95.0%	0.89	3.33
D16.12	16.12	0.42	95.0%	0.89	3.26
D16.13	16.13	2.48	85.0%	0.80	12.59
D16.14	16.14	0.12	95.0%	0.89	0.92
D16.15	16.15	0.41	95.0%	0.89	3.25
D16.16	16.16	0.48	95.0%	0.89	3.51
D16.17	16.17	0.31	95.0%	0.89	2.42
D16.18	16.18	0.41	95.0%	0.89	3.01
D18.1	18.1	7.95	85.0%	0.80	38.00
D18.2	18.2	0.36	95.0%	0.89	2.67
D18.3	18.3	0.42	95.0%	0.89	3.00
D18.4	18.4	0.42	95.0%	0.89	3.00
D18.5	18.5	2.21	85.0%	0.80	11.34
D18.6	18.6	0.27	95.0%	0.89	2.15
D18.7	18.7	0.33	95.0%	0.89	2.56
D18.8	18.8	0.33	95.0%	0.89	2.56
D18.9	18.9	0.31	95.0%	0.89	2.47
D18.10	18.10	2.62	85.0%	0.80	13.36
D18.11	18.11	0.29	95.0%	0.89	2.22
D18.12	18.12	0.29	95.0%	0.89	2.22
D18.13	18.13	0.61	85.0%	0.80	3.21
D18.14	18.14	0.11	95.0%	0.89	0.86
D20.1	20.1	0.41	95.0%	0.89	3.01
D20.2	20.2	0.31	95.0%	0.89	2.42
D20.3	20.3	0.49	95.0%	0.89	3.73
D20.4	20.4	0.40	95.0%	0.89	3.16
OS-1	OS-1	0.20	95.0%	0.89	1.60
OS-2	OS-2	0.18	95.0%	0.89	1.42
OS-3	OS-3	0.17	95.0%	0.89	1.33

UNDERGROUND WATER QUALITY SUMMARY	
WQCV	
VOLUME REQUIRED	VOLUME PROVIDED
0.1284 AC-FT	0.1295 AC-FT



APPROVED FOR ONE YEAR FROM THIS DATE

City Engineer

Date

Water Department

Date

BIOSCIENCE 5
AT FITZSIMMONS INNOVATION COMMUNITY

PRELIMINARY INTERIM DRAINAGE PLAN

No.	Description of Revisions	Date	Name
1	1ST CSP SUBMITTAL	02/14/20	PSB
2	2ND CSP SUBMITTAL		PSB
Job Number 19.0015			
Project Manager P. BUCKLEY			
Design By S. CROMLEY/N.KONTOR			
Drawn By S. CROMLEY			
Principal in Charge S. PALING			
THESE PLANS, SPECIFICATIONS, AND DRAWINGS ARE PREPARED BY AND FOR THE EXCLUSIVE USE OF THE USER AND NOT MARTIN/MARTIN, INC. NO REPRESENTATION, WARRANTY, OR LIABILITY IS ASSUMED BY MARTIN/MARTIN, INC. FOR ANY USE OF THESE PLANS, SPECIFICATIONS, AND DRAWINGS FOR ANY OTHER PROJECT OR FOR ANY OTHER PURPOSE.			

Sheet Number:

D-200