

# Proposed RV Storage: E-470/Jewell Ave Aurora, CO

Submitted to USFWS on 10/2/17

Stephanie Beguin

C: 720-244-5976

# Review of proposed project for discussion of any potential impact on eagle habitation

- We understand from the city of Aurora that in the summer of 2017, bald eagles have made a home in a tree on the property of the Plains Conservation
- As the Plains Conservation Center land is adjacent to the land for this proposed project, we are seeking input from the FWS regarding the eagle habitation
- This document will provide:
  - Description of the overall project
  - Aerial views of the project site with marks indicating distance to the nest
  - Description of anticipated construction noise
  - Best effort view in the direction of the nest from the project site

# Overview of proposed RV storage project

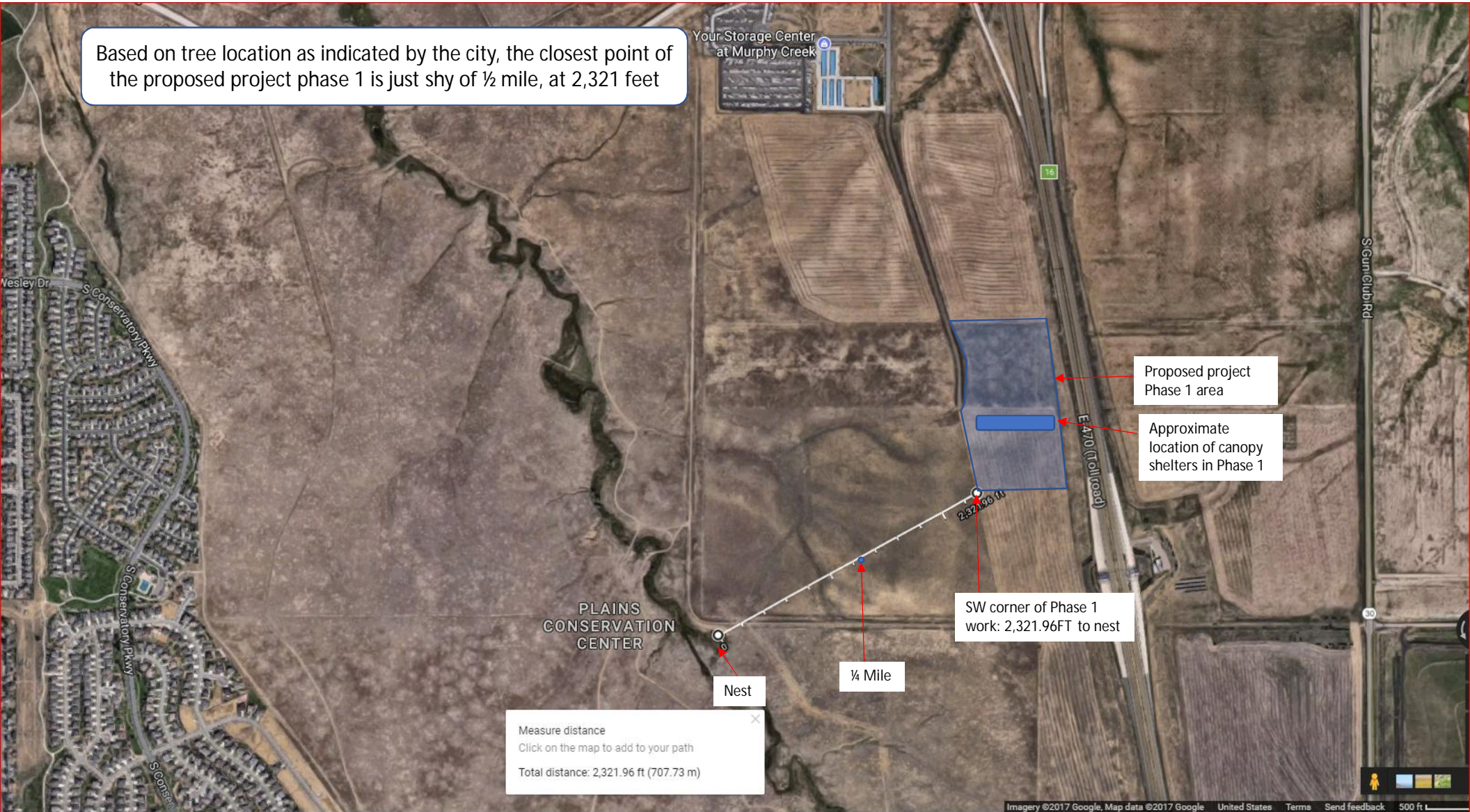
- Project encompasses a total of 38 acres
- Phase one will develop the northern part of the parcel (pictures on following slides)
- Construction anticipated to begin in January, 2018, pending full approvals from the city of Aurora, anticipated to run for 2 months, and includes:
  - Running utilities (water, sewer and electricity) along Rome Way from access points at existing business at Jewell/Rome Way intersection
  - Grading the land
  - Creating a 3 acre detention pond along E-470
  - Spreading of crushed asphalt as a parking surface
  - Construction of 8 foot high perimeter fence
  - Series of approximately 60 connected steel canopies for RV storage
    - Expected to be approximately 34 feet tall
    - Roof-only structures in a color to match the surrounding landscape
  - Installation of down-directed lights for parking area, in accordance with Buckley, low-interference regulations

View of entire area for familiarization and location purposes





Based on tree location as indicated by the city, the closest point of the proposed project phase 1 is just shy of ½ mile, at 2,321 feet





Based on tree location as indicated by the city, the closest point of the proposed project phase 2 is just shy of ½ mile, at 2,232 feet

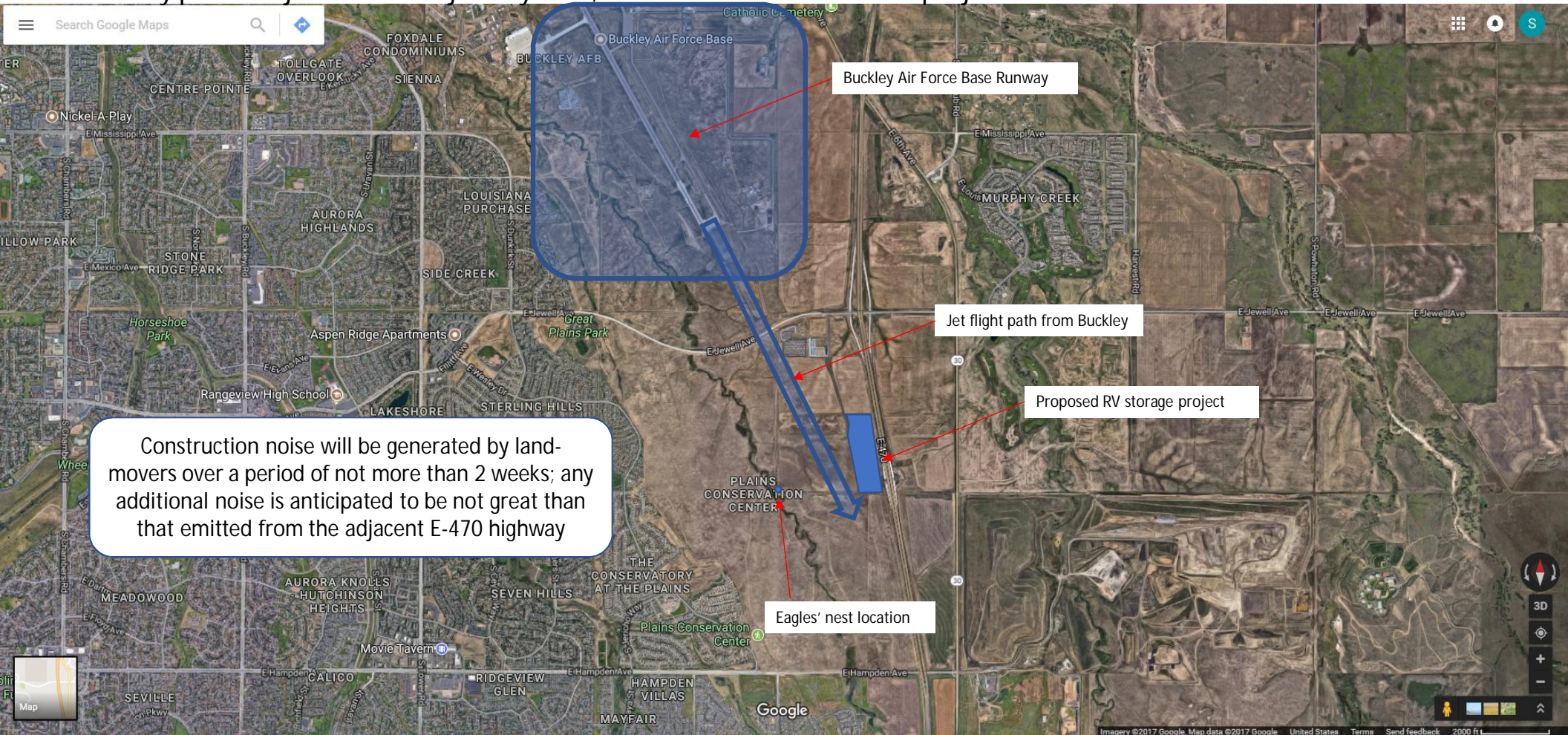


Measure distance  
Click on the map to add to your path  
Total distance: 2,232.54 ft (680.48 m)

Closest point to the nest at 2232.54FT



This view shows the Buckley runway to the NW of both the Eagles' nest and the project. The angle of the runway puts the jets with a trajectory S/SE, between the nest and the project



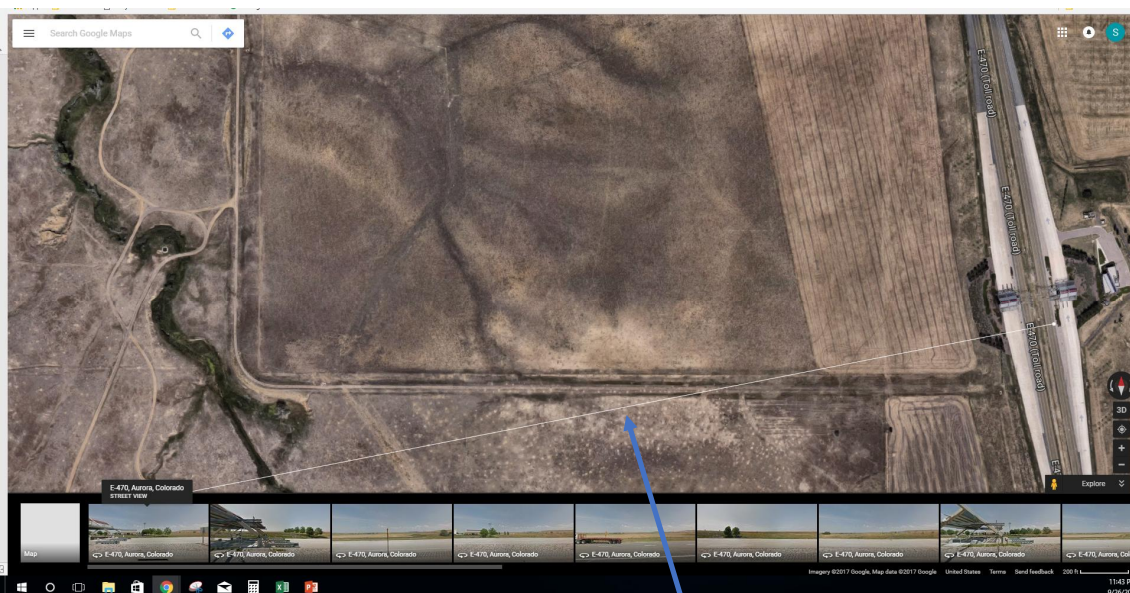


While difficult to appreciate in the aerial view, the land between E-470 and the nest undulates, with the land rising and falling such that the tree is not visible from the site, and the project site is not visible from the tree





These 2 photos are from Google. The one on the left shows the trajectory of the direction of the phot as seen on the right. As you look past the FedEx truck on the right, you can see that the land continues to rise from E-470 toward the ridge indicated on the preceding picture.



This fine white line shows the line of sight of the view in the picture on the right

Below is an example of the anticipated canopy structures





Thank you for your time and attention on this project. Please do not hesitate to call with any questions; we look forward to working with you!

Stephanie Beguin

C: 720-244-5976