



## Site Safety and Evacuation Plan

10188 East Interstate 25 Frontage Road  
Firestone, CO 80504



FACILITY/SITE INFORMATION		GPS Information for Mede-Vac
Site Location Name:	<b>Rush North 4-65 29-30 Well Connect</b>	Lat: <b>39.675736 N</b>
Emergency Notification Number:	<b>911</b>	Long: <b>-104.676421 W</b>
Site Phone Number:	<b>303-774-3900</b>	Elevation: <b>5651 Ft</b>
Legal Description:	Qtr <b>SW</b> Qtr <b>NW</b> Sec <b>28</b> Twn <b>4S</b> Rng <b>65W</b>	
<b>24 hr. Emergency Contact Number: 303-659-7740</b>		
Est. Trailer Response Time from Office <b>23 Minutes</b>		
DIRECTIONS TO SITE:	From Powhaton Rd. and E Jewell Ave. Proceed west .25 miles. Proceed south on lease road .55 miles to location.	

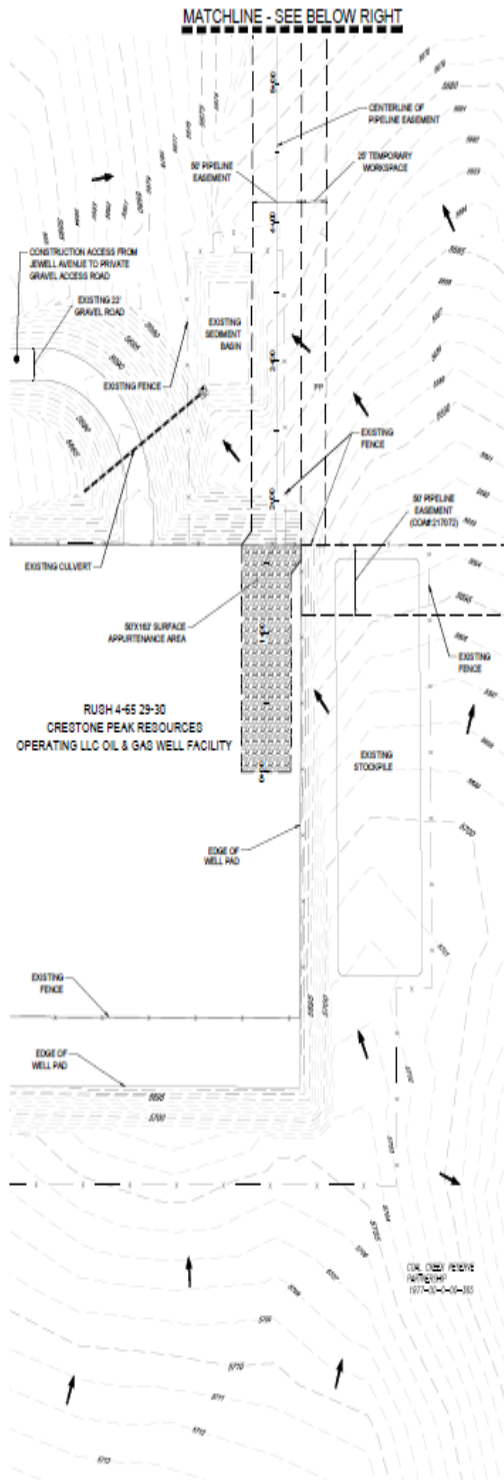
EMERGENCY RESPONSE NUMBERS		
Contact	Location	Number
Police/Sheriff	Arapahoe County Sheriff	303-795-4711 (911)
Fire	Aurora Fire Department	303-326-8999 (911)
Flight-for-Life		911
Hospital	UC Health Univ of Colo Hospital	720-848-0000
Is "911" accessible from this location? X <b>Yes</b> No		

COMPANY CONTACTS				
Name	Position	Location	Telephone	Cellular/Other
24 Hr. Emergency Notification Number		Firestone, CO		303-659-7740
<b>24 Hour Emergency Notification Number</b>			<b>303-659-7740</b>	
MSDS ONLINE		USA	1-866-362-2007	

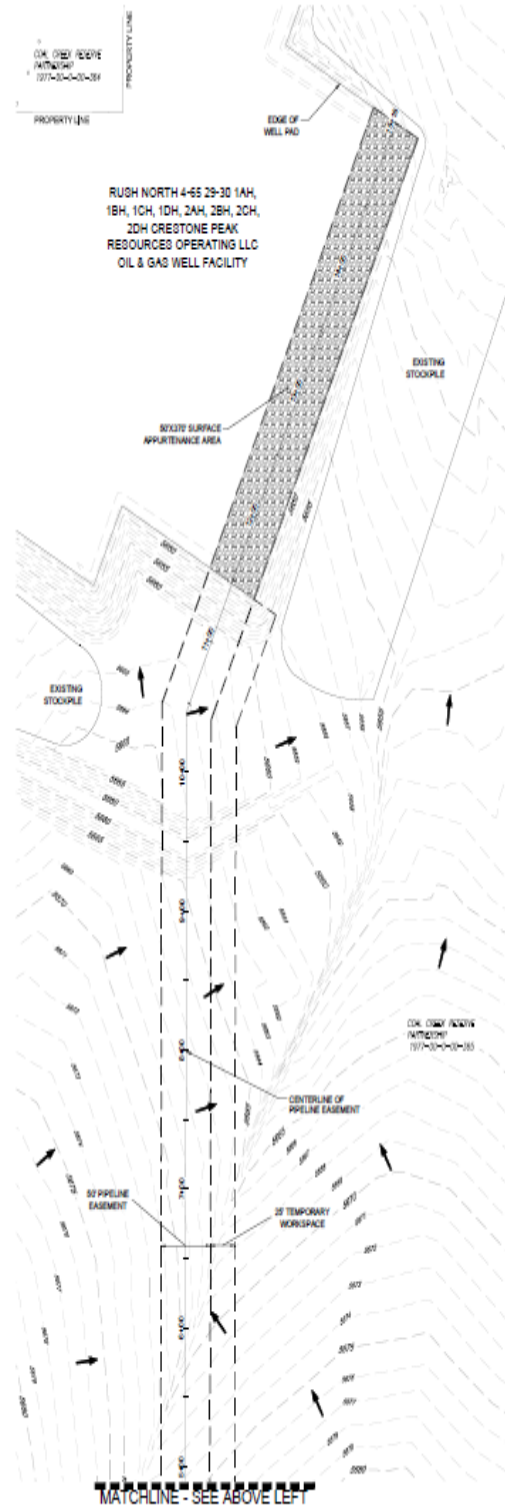
DESIGNATED MUSTERING POINTS (worker assembly areas)	
Primary: Sign in gate	
Secondary: 100 yards away from primary muster point along access road.	
Alarm Procedures: Audible and Visual. Gate Guard will keep sign in sheet for roll-call.	
Comments:	
Prepared By:	Craig Bryant
Date:	9/30/2020
Revision Date:	

Level 1 Emergency	
Requires activation of Level 1 Notifications per Emergency Notification Chart. Onsite incidents where control of the hazard has been obtained, but the potential exists for the imminent loss of control due to deteriorating conditions.	
Definition / Criteria	Examples (may not reflect area-specific risks or threats)
<ul style="list-style-type: none"> <li>Immediate control of the hazard has been established using available resources, however, conditions are not improving and/or resources are being depleted.</li> <li>Injuries to onsite personnel that are of a moderate impact.</li> <li>Public safety is not threatened, however there is, or may be, a public perception of moderate risk to human health or the environment.</li> <li>Environmental impacts are confined to the site and have limited potential to impact offsite.</li> <li>All control and relief systems are functioning normally</li> </ul>	<ul style="list-style-type: none"> <li>Any controlled situation, outside of normal operation conditions, where the ability to maintain control using onsite resources is in question or offsite resources are required to maintain control such as a fire or explosion where imminent control of the fire is probable.</li> <li>Injuries to personnel requiring offsite medical attention.</li> <li>Spills and releases that are contained onsite but have the potential to extend offsite.</li> <li>Any incident requiring the advisory notification of the public of a non-routine, onsite occurrence.</li> <li>Weather conditions (i.e., tornado) which may threaten personnel and operations.</li> <li>Potential social / political unrest, labor disputes</li> </ul>
Level 1 Site Specific Response Requirements	
Step 1: Evacuate and Muster in designated/safe area Step 2: Activate Notifications per Emergency Notification Chart Step 3: Create Incident Command Post	Step 4: Create Incident Command Structure Step 5: Create Initial Action Plan and Mitigate Incident Step 6: Create Recovery Plan and Implement Plan
Level 2 Emergency	
Requires activation of Level 1 and Level 2 Notifications per Emergency Notification Chart. May require notification to public responders. An incident where control of the hazard has been lost but where imminent and/or intermittent control of the hazard is possible.	
Definition / Criteria	Examples (may not reflect area-specific risks or threats)
<ul style="list-style-type: none"> <li>Control of the hazard has been lost, however, through the application of available resources intermittent control is being obtained or hazard control is imminent.</li> <li>Injuries to onsite personnel that are of a major impact.</li> <li>Public safety is not threatened, however there is, or may be, a public perception of significant risk to human health or the environment.</li> <li>Environmental effects extend offsite and are resulting in minor or short-term detrimental impacts.</li> <li>Some control and relief systems are not operational.</li> </ul>	<ul style="list-style-type: none"> <li>Any uncontrolled hazard where the ability to regain control using available resources is imminent or intermittent control is being achieved using available resources such as pipeline integrity failure.</li> <li>Injuries to personnel which have or are likely to result in a lost time (beyond the day of the occurrence) injury or short term health impact.</li> <li>Spills or releases that extend offsite and are, or will, result in minor or short-term detrimental impacts.</li> <li>Any incident requiring the notification of the public of a potential or imminent threat to human health or the environment, such as a pipeline rupture.</li> <li>Some control and/or relief systems are not operational.</li> <li>Imminent security threats, social / political unrest, and labor disputes.</li> <li>Severe weather threats which threatens personnel and/or operations.</li> </ul>
Level 2 Site Specific Response Requirements	
Step 1: Evacuate and Muster in designated/safe area Step 2: Activate Notifications per Emergency Notification Chart Step 3: Create Incident Command Post	Step 4: Create Incident Command Structure Step 5: Create Initial Action Plan and Mitigate Incident Step 6: Create Recovery Plan and Implement Plan
Level 3 Emergency	
Requires activation of Level 1, Level 2, and Level 3 Notifications per Emergency Notification Chart. An incident where control of the hazard has been lost, imminent control is not possible and public safety is, or has the potential, to be threatened.	
Definition / Criteria	Examples (may not reflect area-specific risks or threats)
<ul style="list-style-type: none"> <li>Control of the hazard has been lost and regaining control is not imminently possible..</li> <li>Onsite personnel have sustained injuries with serious impact.</li> <li>Public safety is being, or has the imminent potential to be, jeopardized.</li> <li>Environmental impacts are significant, extend offsite and have the potential to result in long-term environmental degradation.</li> <li>Key control and relief functions have failed and are not operating correctly.</li> </ul>	<ul style="list-style-type: none"> <li>Any situation where control of a hazard has been lost and regaining control is not imminently possible such as loss of well control or failure of essential well control equipment.</li> <li>Injuries to personnel which have or are likely to result in permanent disability, long term health impacts or death.</li> <li>Any incident that has necessitated the evacuation or sheltering of public such as or a catastrophic facility fire or loss of process control.</li> <li>Spills or releases that have extended off site and are, or likely to, result in significant and substantial detrimental impact to the environment.</li> <li>Key control and relief systems are not operational.</li> <li>Act of terrorism, violence, social/political unrest.</li> <li>Severe weather impacting personnel and/or operations.</li> <li>Overdue vehicle or aircraft, missing person.</li> </ul>
Level 3 Site Specific Response Requirements	
Step 1: Evacuate and Muster in designated/safe area Step 2: Activate Notifications per Emergency Notification Chart Step 3: Create Incident Command Post	Step 4: Create Incident Command Structure Step 5: Create Initial Action Plan and Mitigate Incident Step 6: Create Recovery Plan and Implement Plan

# Rush North 4-65 29-30 Well Connect Map



PLAN: RUSH NORTH PIPELINE STA: 0+00 TO 5+00



PLAN: RUSH NORTH PIPELINE STA: 5+00 TO 15+18