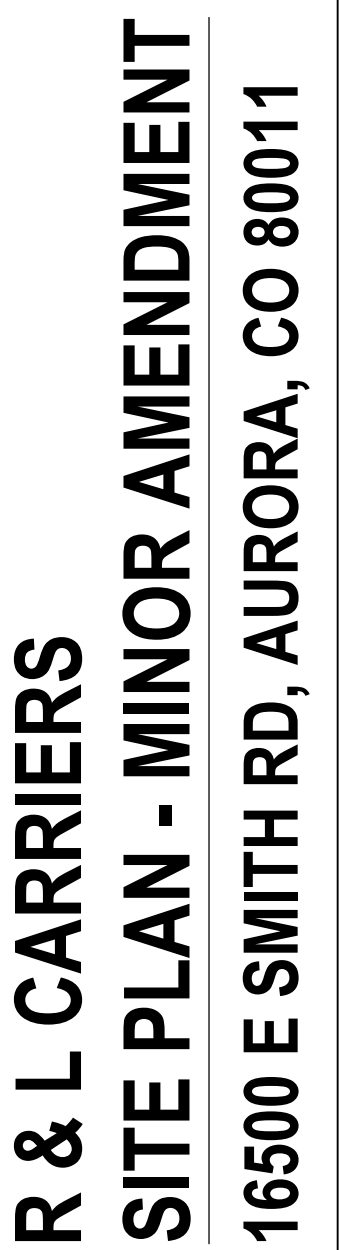
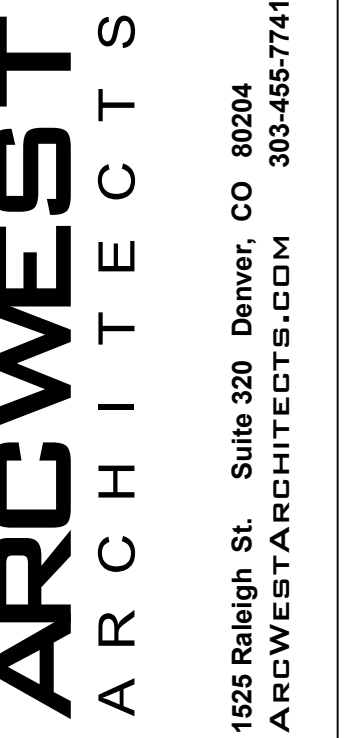
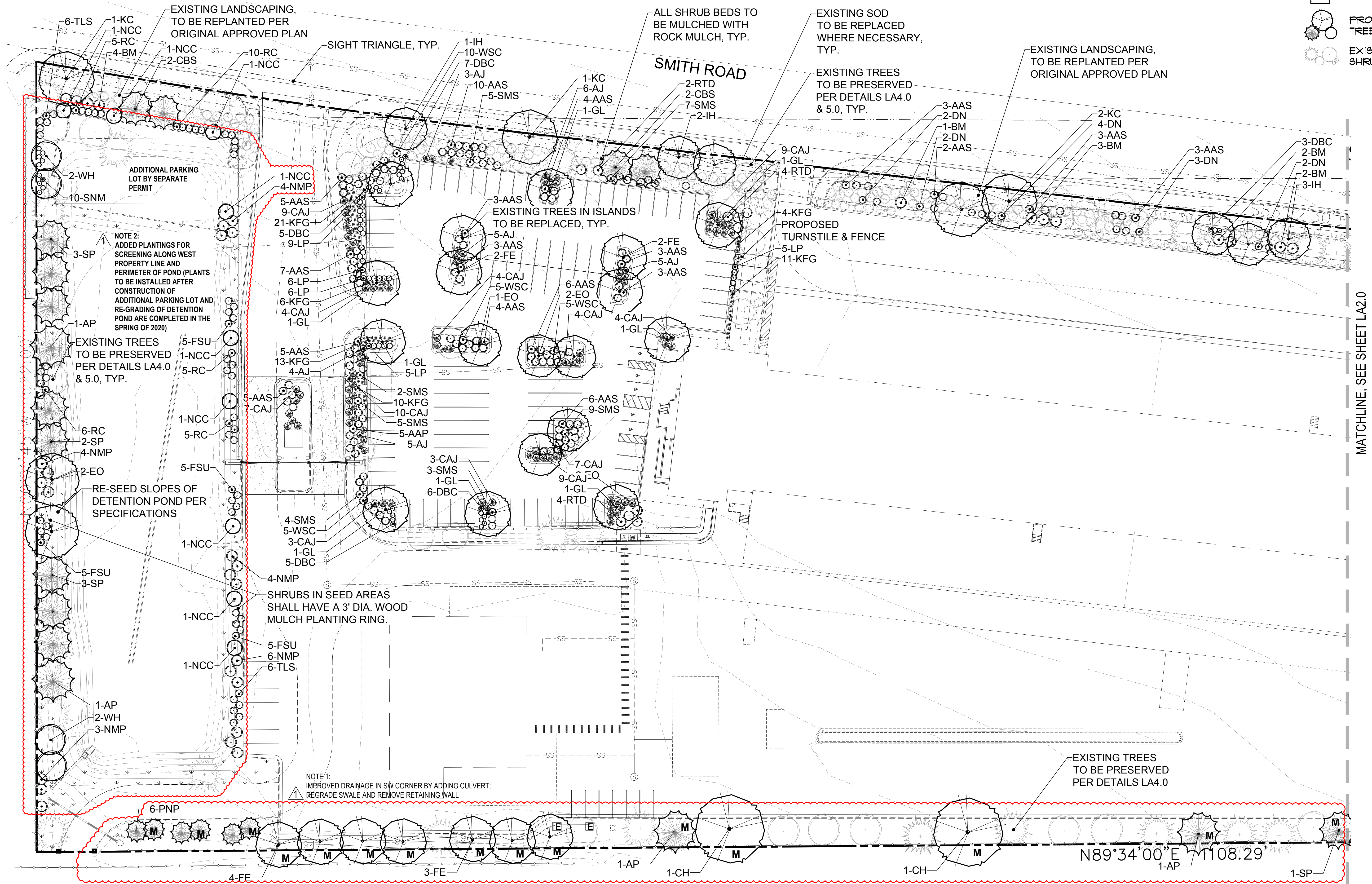


LOCATED IN THE SE 1/4 OF SECTION 29, T3S, R66W OF THE 6TH P.M.  
CITY OF AURORA, COUNTY OF ADAMS, STATE OF COLORADO



SHEET ISSUE DATE:  
 11-16-2018  
 PROJ. NO. 18006  
 ARCWEST ARCHITECTS, INC.  
 SHEET TITLE:  
 LANDSCAPE  
 PLAN  
 SHEET NUMBER:  
 LA1.0



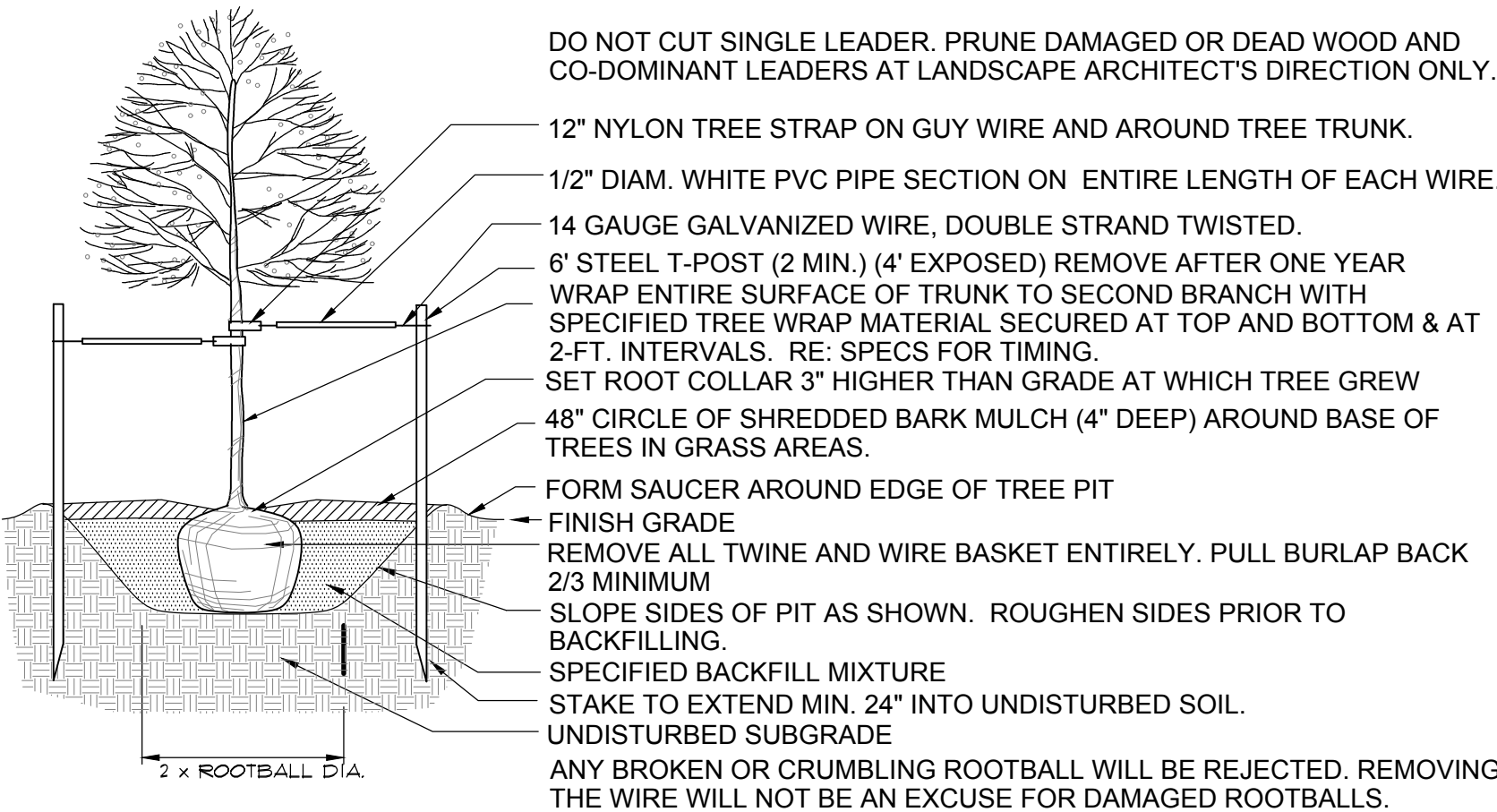


R&L CARRIERS SITE PLAN AMENDMENT WITH CONDITIONAL USE  
FOR MOTOR FREIGHT IN M-1 ZONE

LOCATED IN THE SE 1/4 OF SECTION 29, T3S, R66W OF THE 6TH P.M.  
CITY OF AURORA, COUNTY OF ADAMS, STATE OF COLORADO

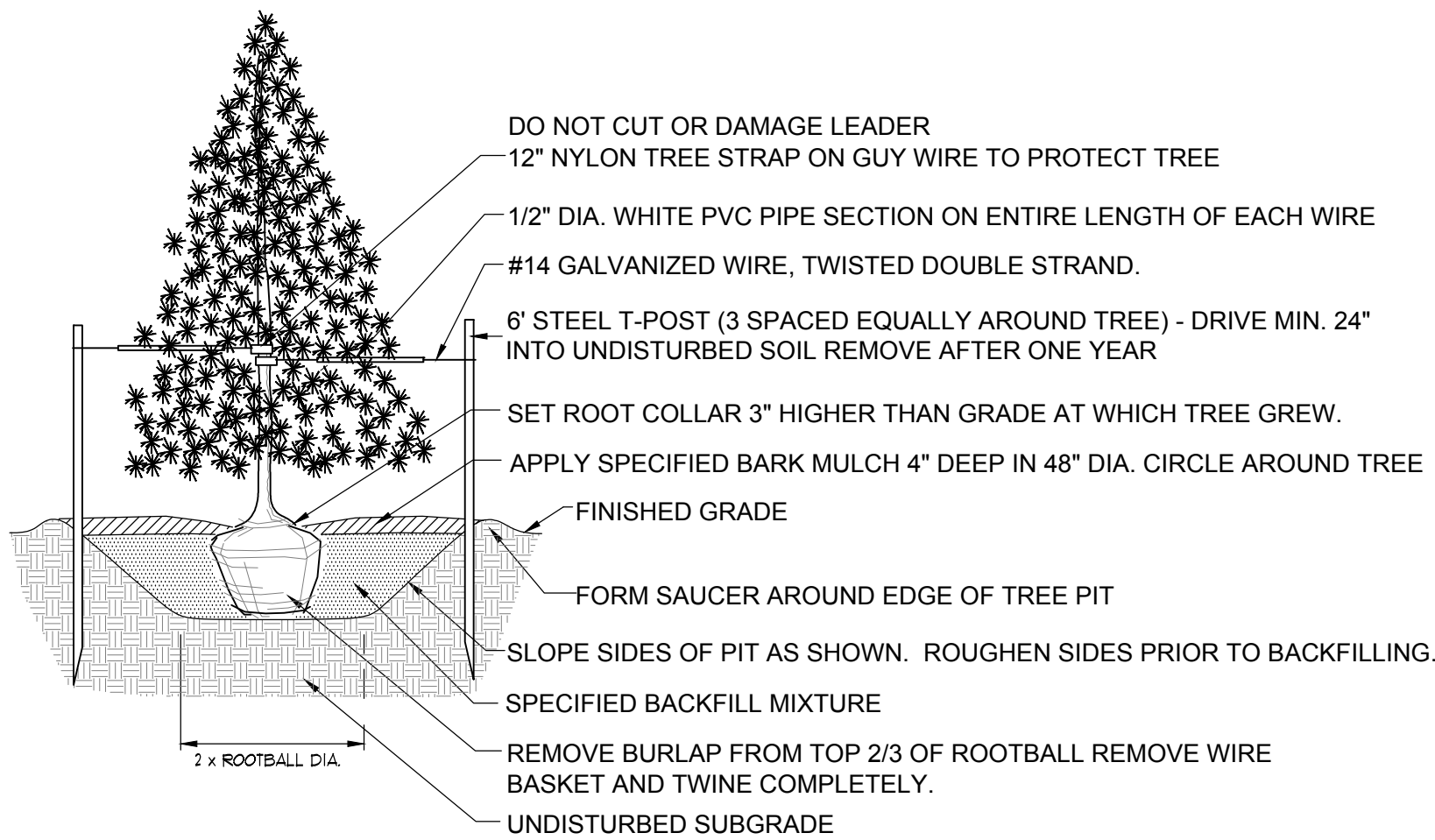
NOTE 2:  
ADDED PLANTINGS FOR SCREENING  
ALONG WEST PROPERTY LINE

NOTE 3:  
RELOCATE RETAINING WALL AND CURB,  
ADD STRIPING FOR TRUCK PARKING



DECIDUOUS TREE PLANTING DETAIL

N.T.S.



EVERGREEN TREE PLANTING DETAIL

N.T.S.

LANDSCAPE REQUIREMENTS

AREA DESCRIPTION	AREA/LENGTH	# OF TREES REQUIRED	# OF TREES PROVIDED	# OF SHRUBS REQUIRED	# OF SHRUBS PROVIDED
PARKING LOT ISLANDS	QTY = 19	19	19 proposed		
AIRPORT BLVD - EAST BUFFER 25'					
1 TREE+10 SHRUBS/40 LF	297 LF	297 LF/40 = 8	3 existing/5 proposed total: 8	297 LF/8 = 74	40 existing/ 34 proposed total: 74
AIRPORT BLVD - R.O.W.					
1 TREE/40 LF	297 LF	297 LF/40 = 8	6 existing/2 proposed total: 8		
AIRPORT BLVD - BUILDING PERIMETER EAST					
	81 LF	81 LF/40 = 2	2		
SOUTH BUFFER (10' MIN. WIDTH)					
1 TREE/40 LF	1,619 LF	1619 LF/40 = 41	18 existing/41 proposed total 59**		

\* tree requirements not met due to existing utilities  
\*\* includes 18 mitigation trees, see trees marked 'M' on plan

NOTE 3:  
RELOCATE RETAINING WALL AND CURB,  
ADD STRIPING FOR TRUCK PARKING

TREE MITIGATION TABLE		
CALIPER INCHES REMOVED	CALIPER INCHES RELOCATED	CALIPER INCHES REPLACED FOR MITIGATION
129.75	0.00	84.0

NOTE:  
A total of 7 mitigation trees have been added to the South Buffer, see trees marked 'M' on plan. Deciduous trees are credited at 2.5", ornamental trees at 2" and evergreen trees at 6' height or 3"

LANDSCAPE PLANT LIST

QUANTITY	KEY	COMMON NAME	LATIN NAME	SIZE	MATURE SIZE (HxW)	CONT.	WATER USE
DECIDUOUS SHADE TREES							
5	CH	COMMON HACKBERRY	CELTIS OCCIDENTALIS	2 1/2" CAL.	50' x 50'	B4B	LOW
7	EO	ENGLISH OAK	QUERCUS ROBUR	2 1/2" CAL.	50' x 35'	B4B	MODERATE
13	FE	FRONTIER ELM	ULMUS FRONTIER'	2 1/2" CAL.	35' x 25'	B4B	LOW
9	GL	GREENSPIRE LINDEN	TILIA CORDATA 'GREENSPIRE'	2 1/2" CAL.	35' x 25'	B4B	MODERATE
11	IH	IMPERIAL HONEYLOCUST	GLEDITSIA TRIACANTHOS INERMIS 'IMPERIAL'	2 1/2" CAL.	35' x 35'	B4B	LOW
8	KC	SEEDLESS KENTUCKY COFFEETREE	GYMNOCLADUS DIOICA 'ESPRESSO'	2 1/2" CAL.	50' x 35'	B4B	LOW
ORNAMENTAL TREES							
5	C80	CRIMSON SPIRE OAK	QUERCUS 'CRIMSON SPIRE'	2" CAL.	50'x18'	B4B	LOW
3	FGP	PAIRIE GEM PEAR	PYRUS 'PAIRIE GEM'	2" CAL.	18'x18'	B4B	LOW
4	UH	WASHINGTON HAWTHORN	CRATAEGUS PHOENOPYRUM	2" CAL.	20'x18'	B4B	LOW
EVERGREEN TREES							
5	AP	AUSTRIAN PINE	PINUS NIGRA	6'	60' x 35'	B4B	MODERATE
21	BFP	BOENIAN PINE	PINUS HELDREICHII	6'	20'x12'		
4	CB5	COLORADO BLUE SPRUCE	PICEA FUNGENS GLAUCA	6'	45' x 25'	B4B	MODERATE
6	FPN	FINION PINE	PINUS EDULUS	6'	25'x15'	B4B	MODERATE
10	SP	SCOTCH PINE	PINUS SYLVESTRIS	6'	40' x 25'	B4B	MODERATE
8	VPP	VANDERWOLF'S PYRAMID PINE	PINUS FLEXILIS 'VANDERWOLF'S PYRAMID'	6'	45' x 25'	B4B	MODERATE
DECIDUOUS SHRUBS							
107	AAS	AUTUMN AMBER SUMAC	RHUS TRILOBATA 'AUTUMN AMBER'		15' x 4.5'	5 GALLON	LOW
19	BM	BLIZZARD MOCKORANGE	PHILADELPHUS LEWISII 'BLIZZARD'		7' x 7'	5 GALLON	MODERATE
67	DBC	DWARF BLACK CHOKEBERRY	ARONIA MELANOCARPA 'IROQUOIS BEAUTY'		3' x 3'	5 GALLON	MODERATE
27	DN	DWARF NINEBARK	PHYSOCARPUS OPULIFOLIUS 'NANUS'		4.5' x 4.5'	5 GALLON	LOW
20	F8U	FRAGRANT SUMAC	RHUS AROMATICA		6' x 6'	5 GALLON	LOW
31	LF	LODENSE PRIVET	LIGUSTRUM VULGARE 'LODENSE'		2.5' x 3.5'	5 GALLON	MODERATE
9	NCC	NATIVE CHOKECHERRY	PRUNUS VIRGINIANA MELANOCARPA		14' x 10'	5 GALLON	MODERATE
21	NMP	NEW MEXICO PRIVET	FORESTIERA PUBESCENS VAR. PUBESCENS		10' x 7'	5 GALLON	LOW
31	RC	RED CORALBERRY	SYMPHORICARPOS ORBICULATUS		4.5' x 4.5'	5 GALLON	LOW
10	RRL	RED LEAF ROSE	ROSA GLAUCA		6.5' x 5'	5 GALLON	LOW
10	RTD	REDTUIG DOGWOOD	CORNUS SERICEA		7' x 7'	5 GALLON	MODERATE
35	SMS	SNOWMOUND SPIREA	SPIREA NIPPONICA 'SNOWMOUND'		4' x 4'	5 GALLON	MODERATE
10	SNM	MOUNTAIN SNOUBERRY	SYMPHORICARPOS OREOPHILUS		3' x 3'	5 GALLON	LOW
12	TL5	THREE LEAF SUMAC	RHUS TRILOBATA		4.5' x 4.5'	5 GALLON	LOW
24	WSC	WESTERN SAND CHERRY	PRUNUS BESSEYI		5' x 5'	1	LOW
EVERGREEN SHRUBS							
28	AJ	ARMSTRONG JUNIPER	JUNIPERUS CHINENSIS 'ARMSTRONGII'		3.5' x 3.5'	5 GALLON	LOW
79	CAJ	COMPACT ANDORRA JUNIPER	JUNIPERUS 'ANDORRA COMPACTA'		1.5' x 5'	5 GALLON	LOW
GRASSES/PERENNIALS							
65	KFG	FEATHER REED GRASS	CALAMAGROSTIS ARUNDINACEA 'KARL FORESTER'		5' x 2'	1 GALLON	LOW

NOTE:  
PLANT MATERIAL SHALL BE FURNISHED IN QUANTITIES SHOWN ON THE LANDSCAPE PLANS. IN CASE OF DISCREPANCIES BETWEEN THE PLANS AND THE PLANT SCHEDULE, THE PLAN SHALL DICTATE.

TEMPORARILY IRRIGATED SEED MIX (SANDY SOIL SEED MIX - AURORA STANDARD)

COMMON NAME	BOTANICAL NAME	GROWTH SEASON	GROWTH FORM	SEEDS/POUND	POUNDS OF PLS/ACRE
BLUE GRAMA	BOUTELOUA GRACILIC 'HACHITA'	WARM	SOD-FORMING BUNCHGRASS	825,000	4.0
LITTLE BLUESTEM	SCHIZACHYRIUM SCOPARIUM 'PASTURA'	WARM	BUNCH	240,000	3.0
PRAIRIE SANDREED	CALAMOVILFA LONGIFOLIA	WARM	OPEN SOD	274,000	3.0
SAND DROPSEED	SPOROBOLUS CRYPTANDRUS	WARM	BUNCH	5,298,000	2.0
SIDEOATS GRAMA	BOUTELOUA CURTIPENDULA 'BUTTE'	WARM	SOD	191,000	3.0
WESTERN WHEATGRASS	AGROPYRON SMITHII 'ARRIBA'	COOL	SOD	110,000	4.0
SAND BLUESTEM	ANDROPOGON HALLII 'GARDEN'	WARM	SOD	113,300	2.0
SWITCHGRASS	PANICUM VIRGATUM	WARM	SOD	389,000	6.0
INDIAN RICEGRASS	ORYZOPSIS HYMENOIDES	COOL	BUNCH	141,000	4.0
TOTAL					31.0

SEEDING NOTES

1. ORGANIC MATTER AND FERTILIZER SHALL BE APPLIED UNIFORMLY TO THE SOIL OF SEED AREAS AND ROTOTILLED OR DISKED 6" INTO THE SOIL PRIOR TO SEEDING. NECESSARY MEASURE SHALL BE TAKEN TO PREVENT THE FORMATION OF LOW PLACES AND POCKETS WHERE WATER WILL STAND. IMMEDIATELY PRIOR TO SEEDING, THE GROUND SURFACE SHALL BE LIGHTLY TILLED OR HAND WORKED INTO AN EVEN AND LOOSE SEED BED HAVING NO LUMPS OR STONES OVER 3".

2. SEEDING MAY BE ACCOMPLISHED BY MEANS OF MECHANICAL POWER-DRAWN DRILLS FOLLOWED BY PACKER WHEELS, BROADCAST-TYPE SEEDERS. MECHANICAL POWER-DRAWN DRILLS SHALL HAVE DEPTH BANDS SET TO MAINTAIN A PLANTING DEPTH OF AT LEAST 1/4". ALL SEED SOWN BY BROADCAST-TYPE SEEDERS SHALL BE "RAKED IN" OR OTHERWISE COVERED WITH SOIL TO A DEPTH OF AT LEAST 1/4" AND ROLLED TO OBTAIN A FIRM SEED BED. WATER SHALL BE APPLIED WHEN NECESSARY.

3. PROTECT NEWLY-SEEDED AREAS BY APPLYING MULCH AT A RATE OF 2 1/2 TONS PER ACRE. MULCH SHALL BE ATTACHED BY AN APPROVED METHOD SUITABLE FOR THE TYPE OF MULCH USED. MULCH SHALL BE SPREAD UNIFORMLY, IN A CONTINUOUS BLANKET, AFTER SEEDING IS COMPLETE. MULCH SHALL BE CLEAN, WEED AND SEED FREE, LONG STEMMED GRAS OR HAY, OR LONG STEMMED STRAW OF OATS, WHEAT, OR RYE. AT LEAST 50% OF MULCH, BY WEIGHT, SHALL BE TEN INCHES OR LONGER. MULCH SHALL BE SPREAD BY HAND OR BLOWER-TYPE MULCH SPREADER. MULCHING SHALL BE STARTED ON THE WINDWARD SIDE OF RELATIVELY FLAT AREAS OR ON THE UPPER PART OF A STEEP SLOPE AND CONTINUED UNIFORMLY UNTIL THE AREA IS COVERED. THE MULCH SHALL NOT BE BUNCHED. IMMEDIATELY FOLLOWING SPREADING, THE MULCH SHALL BE ANCHORED TO THE SOIL BY A V-TYPE WHEEL LAND PACKER OR A SCALLOPED-DISK LAND PACKER DESIGNED TO FORCE MULCH INTO THE SOIL SURFACE A MINIMUM OF 3 INCHES. ALL SEEDED AREAS SHALL BE MULCHED AFTER SEEDING ON THE SAME DAY AS THE SEEDING.

\*SEEDING NOTES FROM CITY OF AURORA ROADWAY SPECIFICATIONS MANUAL CHAPTER 40.00 SEEDING.

REVISIONS:		
No.	Date	Description
1	9-26-18	CITY COMMENTS
2	10-25-18	CITY COMMENTS
3	7-9-19	MINOR AMENDMENT
4	10-4-19	CITY COMMENTS

SHEET ISSUE DATE:  
11-16-2018  
PROJ. NO. 18006  
© ARCWEST ARCHITECTS, INC.

SHEET TITLE:  
LANDSCAPE  
DETAILS

SHEET NUMBER:  
LA3.0