

SITE PLAN

—— — = PROPERTY LINE

E. CULFAX AVE.

PEORIA ST.

14TH AVE.


N


SIGNAGE SPECIFICATIONS


5'-0" ILLUM. CHANNEL LETTERS
Manufacture and Install (1) set of Channel Letters

5'-0" ILLUM. CHANNEL LETTERS
Manufacture and Install (1) set of Channel Letters

 **3'-4" ILLUM. CHANNEL LETTERS**
Manufacture and Install (1) set of Channel Letters

 **D/F ILLUM. MONUMENT SIGN**
Manufacture and Install (1) Monument Sign

 **HALO LIT CHANNEL LETTERS ON BACKER PANEL**
Manufacture and Install (1) set of Channel Letters

 **D/F NON-ILLUM. DIRECTIONAL SIGN**
Manufacture and Install (1) Directional Sign

SIGN ORDINANCE

WALL - 5 signs permitted

1 sq. ft per linear foot of building frontage for the 200 feet of the building frontage - then 1/2 sq. ft of sign area for each linear foot of building frontage thereafter as measured along the building frontage (the longest building frontage with a public entrance) up to the limit - Max Sign Area shall NOT exceed 600 sq. ft with NO individual sign shall exceed 200 sq. ft.

GROUND:

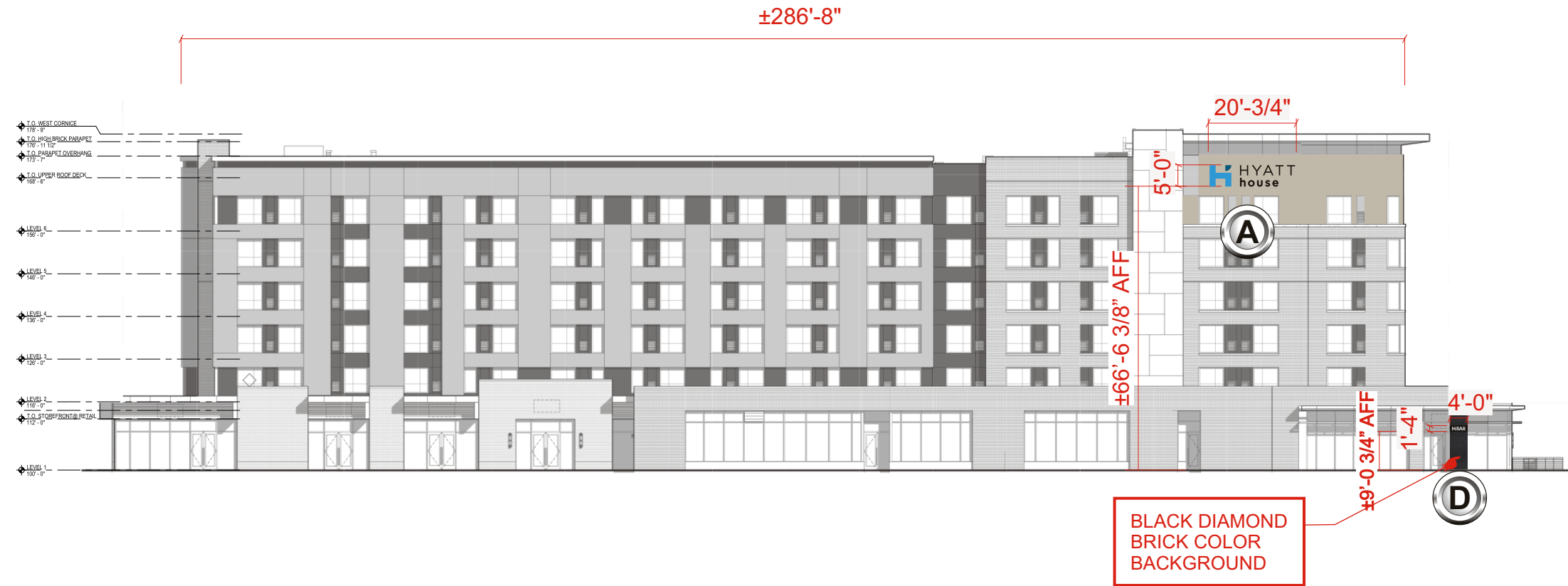
8'-0" oah @ 100 sq. ft



Date: 8-26-20	Project Name: HYATT HOUSE
Scale: NTS	Address: 12230 East Colfax Ave.
Drawn: Teland A. / WA	City / State / Zip: AURORA, CO 80011
PM: HK	Notes:

This is an original unpublished drawing created by Coast Sign, Inc. It is submitted for your personal use in conjunction with a project being planned for you by Coast Sign, Inc.. And shall not be reproduced, used by or disclosed to any firm or corporation for any purpose whatsoever without written permission.

No.	Designer	Date	Revision Notes	No.	Designer	Date	Revision Notes	DESIGN DRAWING 1 of 9 Request Number: PRJ-HYHS-155145-R2
1				7				
2	Jonel B.	11-01-20	Refer to Pathfinder for details	8				
3				9				
4				10				
5				11				
6				12				



(A) (D) NORTH ELEVATION - ILLUMINATED CHANNEL LETTERS & HALO LIT CHANNEL LETTERS ON BACKER PANEL
SCALE: 1/32" : 1'=0"



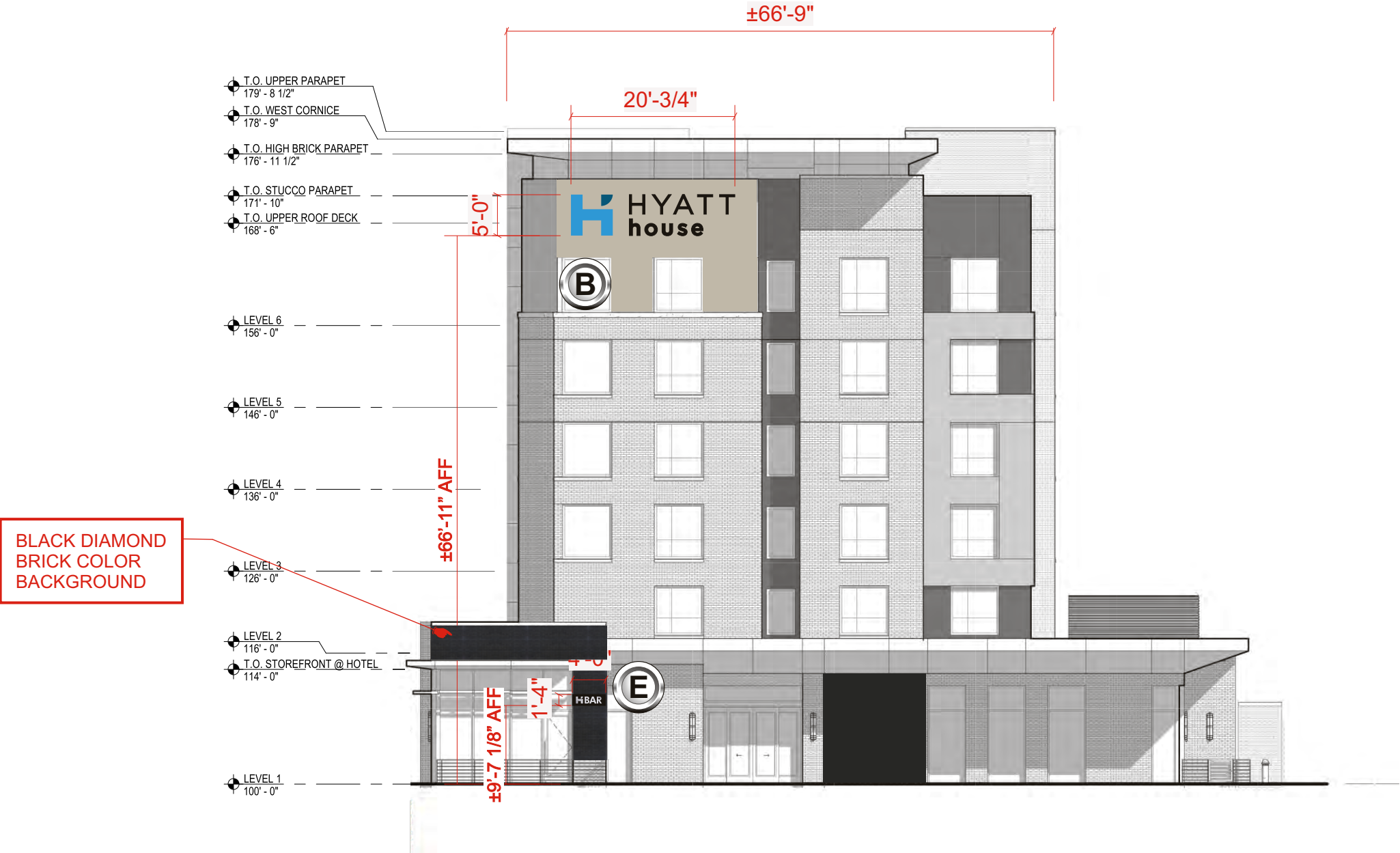
COAST SIGN
INCORPORATED
1500 West Embassy St. Anaheim, CA 92802
(714) 520-9144 FAX: (714) 520-5847

Date: 8-26-20	Project Name: HYATT HOUSE
Scale: NTS	Address: 12230 East Colfax Ave.
Drawn: Teland A. / WA	City / State / Zip: AURORA, CO 80011
PM: HK	Notes:

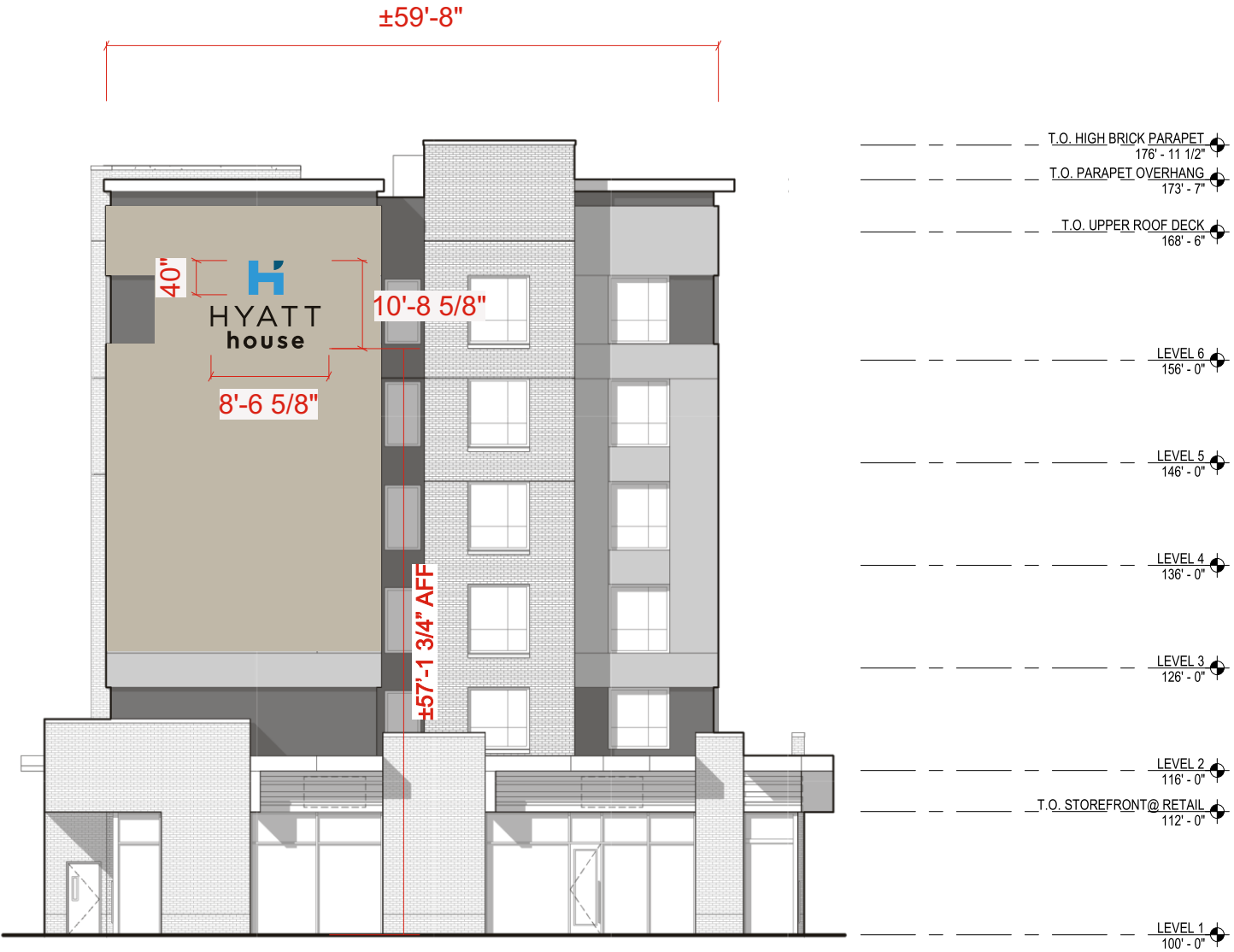
This is an original unpublished drawing created by Coast Sign, Inc. It is submitted for your personal use in conjunction with a project being planned for you by Coast Sign, Inc., And shall not be reproduced, used by or disclosed to any firm or corporation for any purpose whatsoever without written permission.

No.	Designer	Date	Revision Notes	No.	Designer	Date	Revision Notes
1				7			
2	Jonel B.	11-01-20	Refer to Pathfinder for details	8			
3				9			
4				10			
5				11			
6				12			

DESIGN DRAWING 2 of 9
Request Number:
PRJ-HYHS-155145-R2

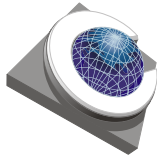


(B) (E) WEST ELEVATION - ILLUMINATED CHANNEL LETTERS & HALO LIT CHANNEL LETTERS ON BACKER PANEL
SCALE: 1/16" : 1'=0"



EAST ELEVATION - ILLUMINATED CHANNEL LETTERS - **PREWIRE REQUIRED**

SCALE: 1/16" : 1'=0"



COAST SIGN
INCORPORATED
1500 West Embassy St. Anaheim, CA 92802
(714) 520-9144 FAX: (714) 520-5847

Date: 8-26-20
Scale: NTS
Drawn: Teland A. / WA
PM: HK

Project Name: HYATT HOUSE
Address: 12230 East Colfax Ave.
City / State / Zip: AURORA, CO 80011
Notes:

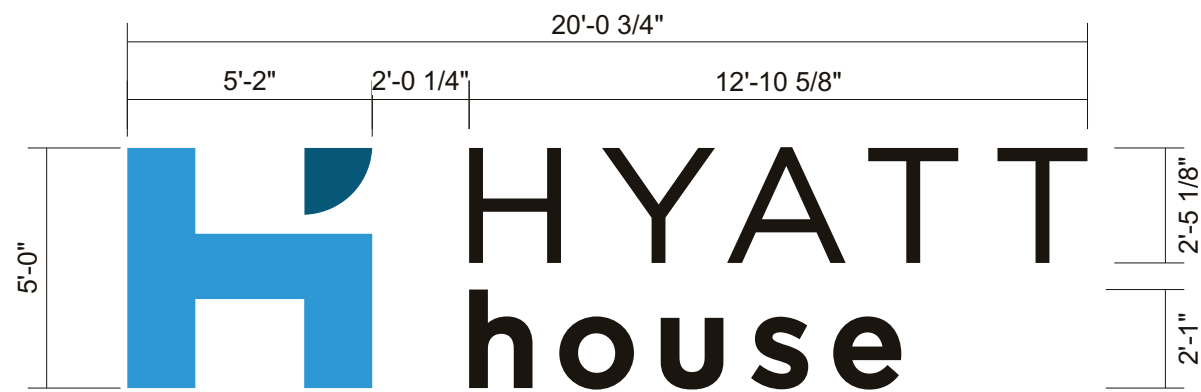
This is an original unpublished drawing created by Coast Sign, Inc. It is submitted for your personal use in conjunction with a project being planned for you by Coast Sign, Inc., And shall not be reproduced, used by or disclosed to any firm or corporation for any purpose whatsoever without written permission.

No.	Designer	Date	Revision Notes	No.	Designer	Date	Revision Notes
1				7			
2	Jonel B.	11-01-20	Refer to Pathfinder for details	8			
3				9			
4				10			
5				11			
6				12			

DESIGN DRAWING 4 of 9

Request Number:

PRJ-HYHS-155145-R2



A **B** **5'-0" ILLUM. CHANNEL LETTERS**
SCALE: 1/4" = 1'-0" **99.99 SQ. FT.**

DESCRIPTION

Logo

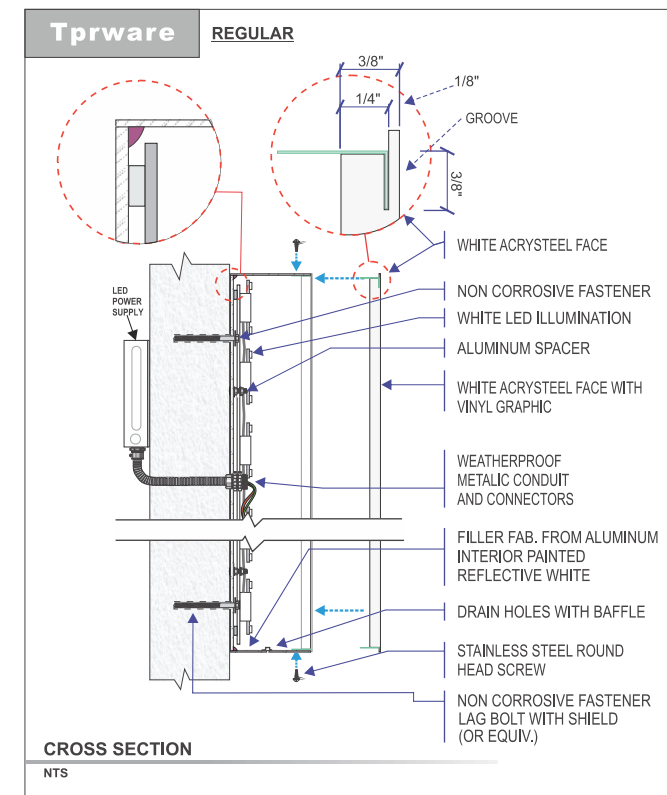
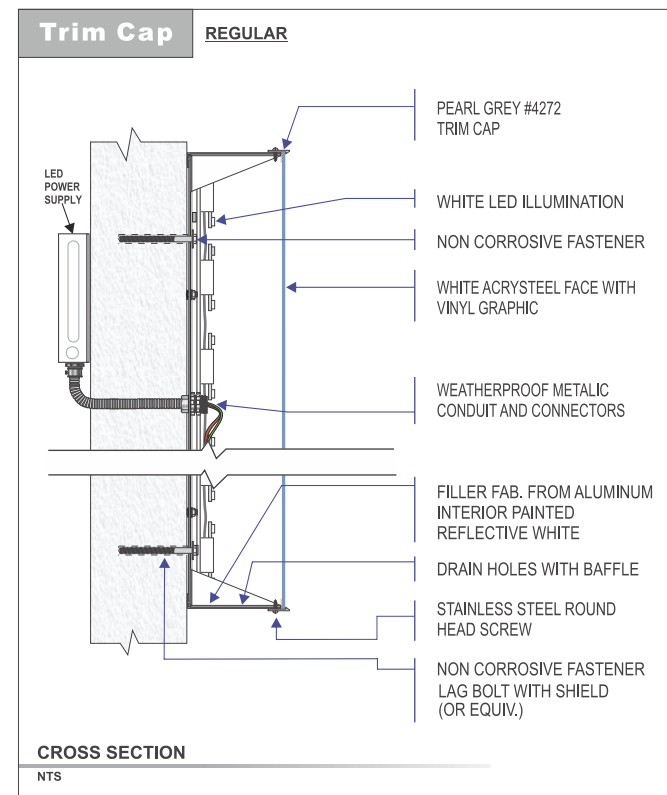
- Cabinets fabricated with grey painted aluminum, with #4272 Pearl Grey Trim Cap (or grey alum. angle*).
- 3/16" white acrysteel faces, Cyan vinyl to be applied on first & second surface.
- Dark blue applied on first surface.
- Illuminated by white led.

Letters

- Cabinets fabricated with grey painted aluminum, "Tprware" style
- 3/8" white acrysteel faces, dark blue and dual color vinyl to be applied on first surface.
- Illuminated by white led.



NIGHT VIEW:



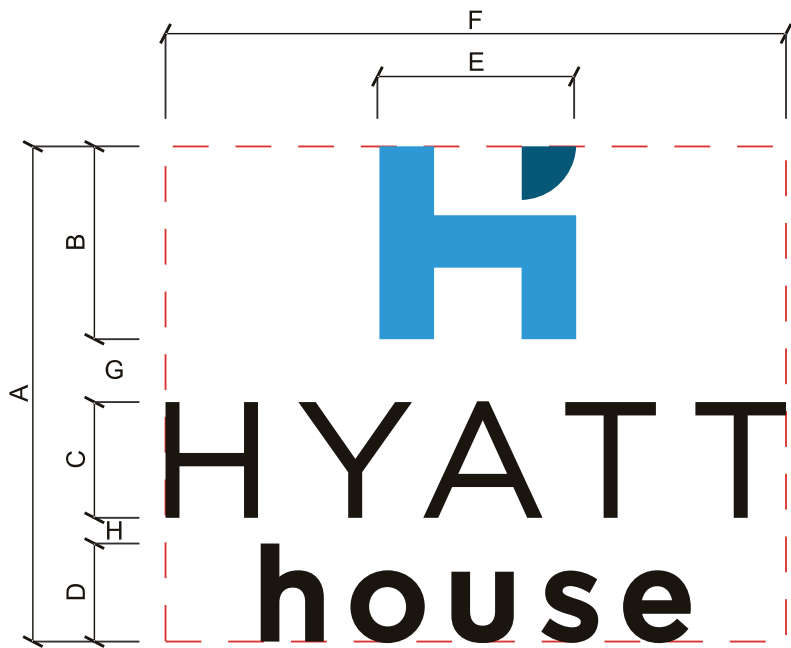
COLORS

White Acrysteel #2447 (or 3M white "Panaflex" #945) face	VPTV HYATT HOUSE DARK BLUE
White Acrysteel #7328 (or 3M white "Panaflex" #945) face	VPTV HYATT HOUSE HOUSE
White Acrysteel #2447	DUAL-COLOR BLACK 3635-222 VINYL

LIGHT WALL COLOR : DAY →BLACK LETTERS / NIGHT →WHITE LETTERS

VPTV= MIRATEC SYSTEMS PURECOLOR DIGITAL PRINT

	LOGO: VPTV HYATT HOUSE CYAN		PAINT: PMS 308, SATIN FINISH
	LOGO ACCENT: VPTV HYATT HOUSE DARK BLUE		
	LETTER FACES: DUAL-COLOR BLACK 3635-222 VINYL		



3'-4" ILLUM. CHANNEL LETTERS

SCALE: NTS

PREWIRE REQUIRED



NIGHT VIEW:

	A	B	C	D	E	F	G	H	AREA
1	6'-5"	2'-6"	1'- 6"	1'- 3 1/4"	2'-6 5/8"	8'- 0 1/2"	9 3/4"	4"	51.615 ft ²
2	8'-6 5/8"	3'- 4"	2'-0"	1'- 8 3/8"	3'- 4 3/4"	10'- 8 5/8"	1'- 1"	5 3/8"	91.739 ft ²
3	11'-5"	4'- 5 3/8"	2'- 8"	2'-3 1/8"	4'-6 3/8"	14'- 3 5/8"	1'- 5 3/8"	7 1/8"	163.38 ft ²
4	12'-10 1/8"	5'- 0"	3'- 0"	2'-6 1/2"	5'-1 1/8"	16' - 1"	1'- 7 5/8"	8"	206.39 ft ²

CIVC-3L CIV-3L CIH-2L CIH-1L3H

DESCRIPTION

Logo

- Cabinets fabricated with grey painted aluminum, with #4272 Pearl Grey Trim Cap (or grey alum. angle*).
- 3/16" white acrylic faces, Cyan vinyl to be applied on first & second surfaces.
- Dark blue applied on first surface.
- Illuminated by white led.

* Fabricated aluminium angle retainers for "H" on specific size.

Letters

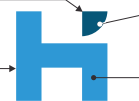
- Cabinets fabricated with grey painted aluminum, "Tprware" style.
- 3/8" white acrylic faces, dark blue and dual color vinyl to be applied on first surface.
- Illuminated by white led.

COLORS

White Acrysteel #2447
(or 3M white "Panaflex"
#945) face

White Acrysteel #7328
(or 3M white "Panaflex"
#945) face

White Acrysteel #2447



HYATT
house

VPTV HYATT HOUSE
DARK BLUE

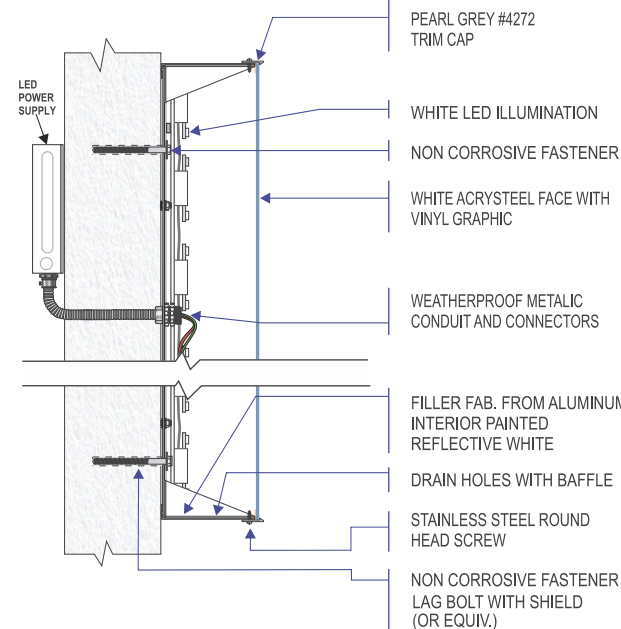
VPTV HYATT HOUSE
HOUSE

DUAL-COLOR BLACK
3635-222 VINYL

LIGHT WALL COLOR : DAY →BLACK LETTERS / NIGHT →WHITE LETTERS

Trim Cap

REGULAR

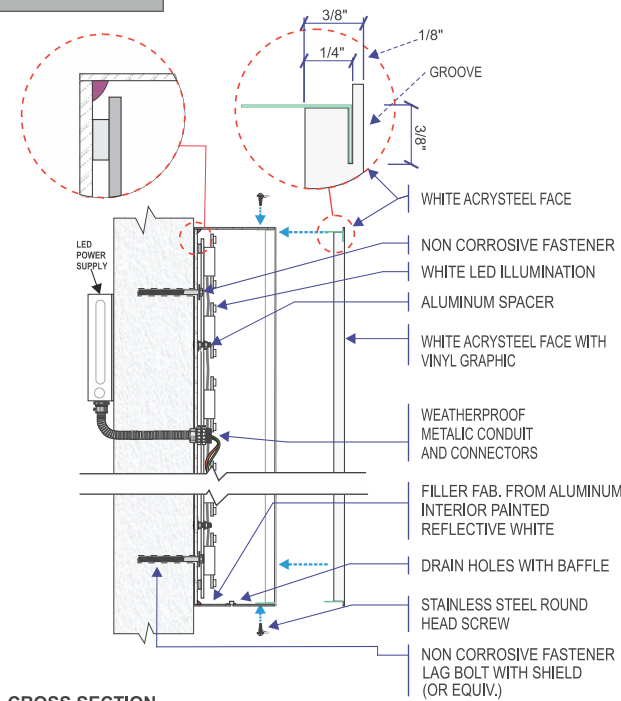


CROSS SECTION

NTS

Tprware

REGULAR



CROSS SECTION

NTS

VPTV= MIRATEC SYSTEMS PURECOLOR DIGITAL PRINT



LOGO:
VPTV HYATT HOUSE CYAN

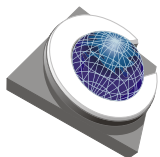


LOGO ACCENT:
VPTV HYATT HOUSE DARK BLUE



LETTER FACES:
DUAL-COLOR BLACK 3635-222 VINYL

PAINT:
PMS 308, SATIN FINISH



COAST SIGN
INCORPORATED
1500 West Embassy St. Anaheim, CA 92802
(714) 520-9144 FAX: (714) 520-5847

Date: 8-26-20

Scale: NTS

Drawn: Teland A. / WA

PM: HK

Project Name: HYATT HOUSE

Address: 12230 East Colfax Ave.

City / State / Zip: AURORA, CO 80011

Notes:

This is an original unpublished drawing created by Coast Sign, Inc. It is submitted for your personal use in conjunction with a project being planned for you by Coast Sign, Inc., And shall not be reproduced, used by or disclosed to any firm or corporation for any purpose whatsoever without written permission.

No. 1 2 3 4 5 6

Designer Jonel B.

Date 11-01-20

Revision Notes Refer to Pathfinder for details

No. 7 8 9 10 11 12

Designer

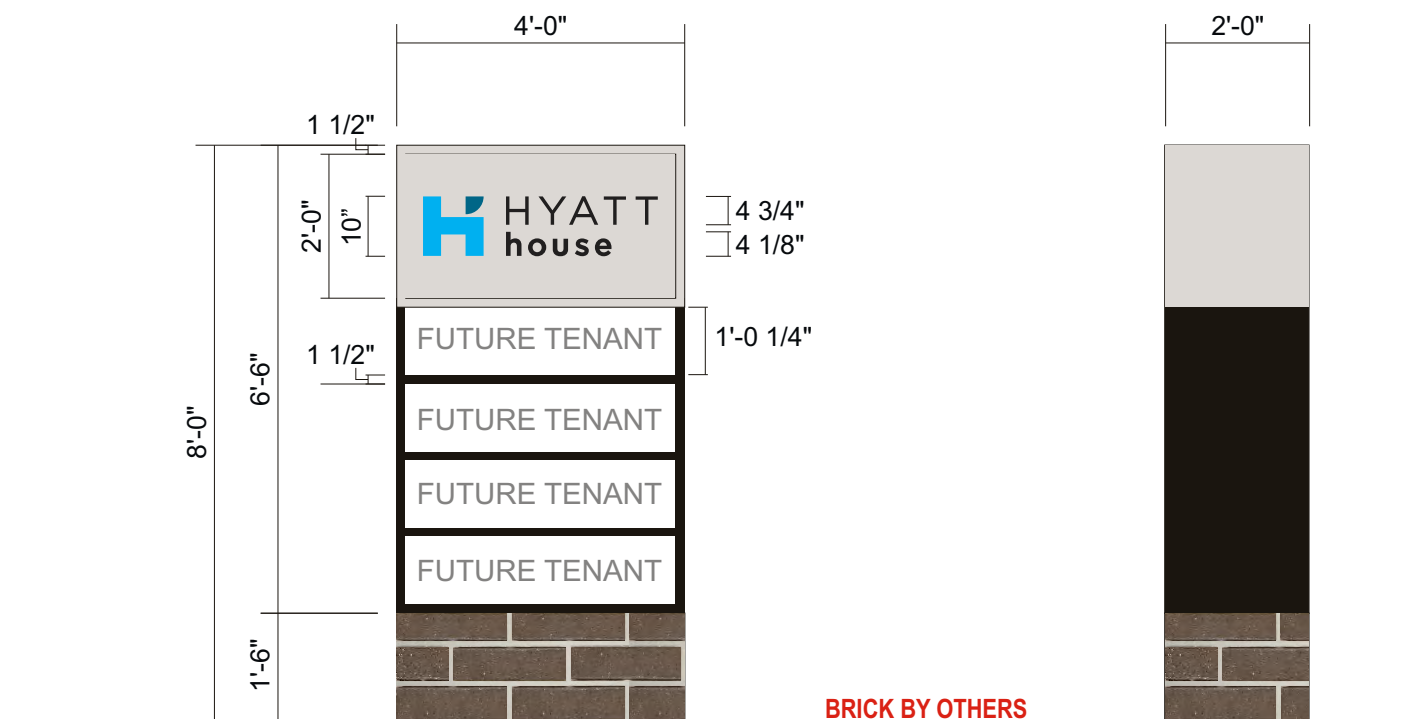
Date

Revision Notes

DESIGN DRAWING 6 of 9

Request Number:

PRJ-HYHS-155145-R2



FRONT VIEW @ D/F MONUMENT SIGN

Scale: 3/8" = 1'-0"

64 SQ. FT.

END VIEW

MONUMENT SPECIFICATIONS:

ALUMINUM FABRICATED MONUMENT PAINTED PMS COOL GRAY 2 SATIN FINISH
WITH 2" ALUMINUM PMS COOL GRAY 2 SATIN FINISH RETAINER & WHITE PLEX PANELS
WITH VINYL COPY APPLIED FIRST SURFACE
1 1/2" ALUMINUM PMS COOL GRAY 2 SATIN FINISH DIVIDER

BASE TO BE BRICK BY OTHERS

HYATT HOUSE PANEL:

LOGO: ARLON #2500-2498 CYAN BLUE, 3M #3630-7570 DARK BLUE VINYL
LETTERS: 3M #3635-222 BLACK PERFORATED VINYL
BACKGROUND: 3M #7725-11 LIGHT GREY

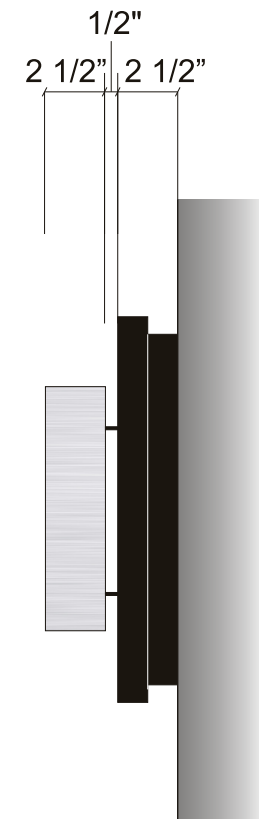
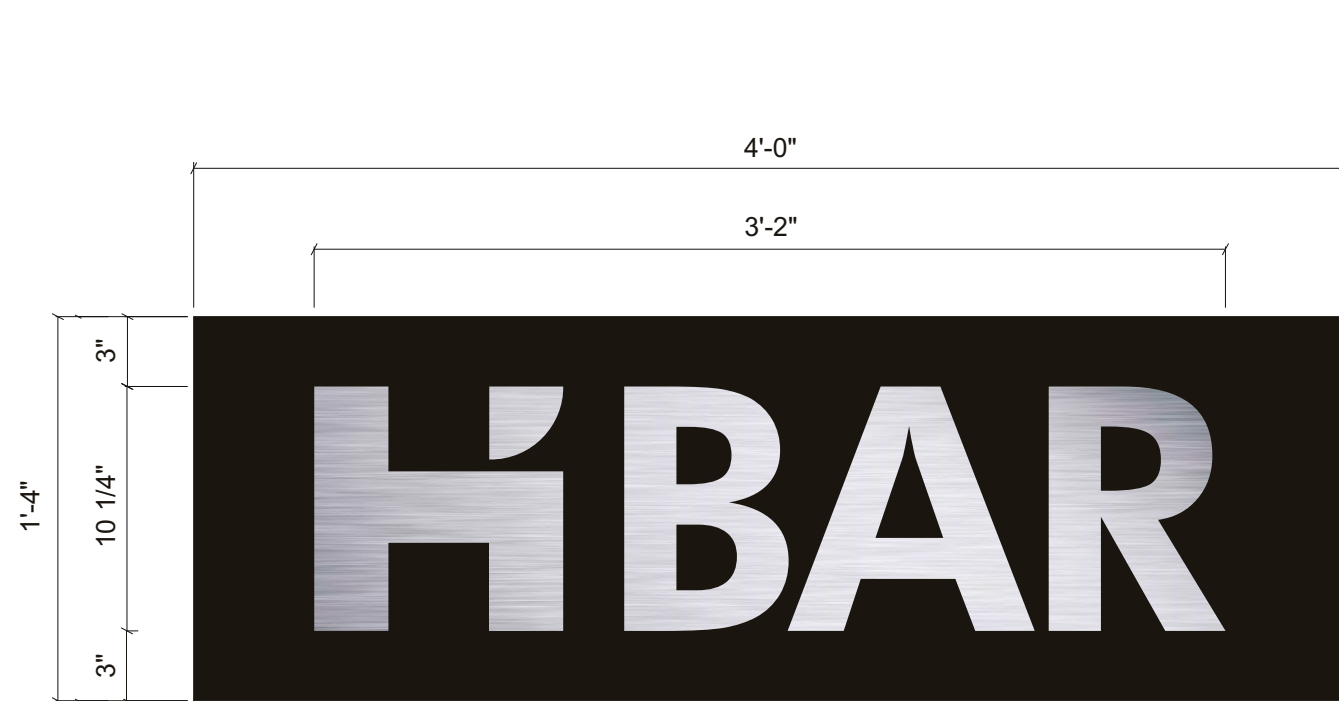


Date: 8-26-20	Project Name: HYATT HOUSE
Scale: NTS	Address: 12230 East Colfax Ave.
Drawn: Teland A. / WA	City / State / Zip: AURORA, CO 80011
PM: HK	Notes:

This is an original unpublished drawing created by Coast Sign, Inc. It is submitted for your personal use in conjunction with a project being planned for you by Coast Sign, Inc., And shall not be reproduced, used by or disclosed to any firm or corporation for any purpose whatsoever without written permission.

No.	Designer	Date	Revision Notes	No.	Designer	Date	Revision Notes
1				7			
2	Jonel B.	11-01-20	Refer to Pathfinder for details	8			
3				9			
4				10			
5				11			
6				12			

DESIGN DRAWING 7 of 9
Request Number: PRJ-HYHS-155145-R2



FRONT VIEW @ HALO LIT CHANNEL LETTERS ON BACKER PANEL - SELF CONTAINED

Scale: 1 1/2"=1'-0"

GENERAL SPECIFICATIONS:

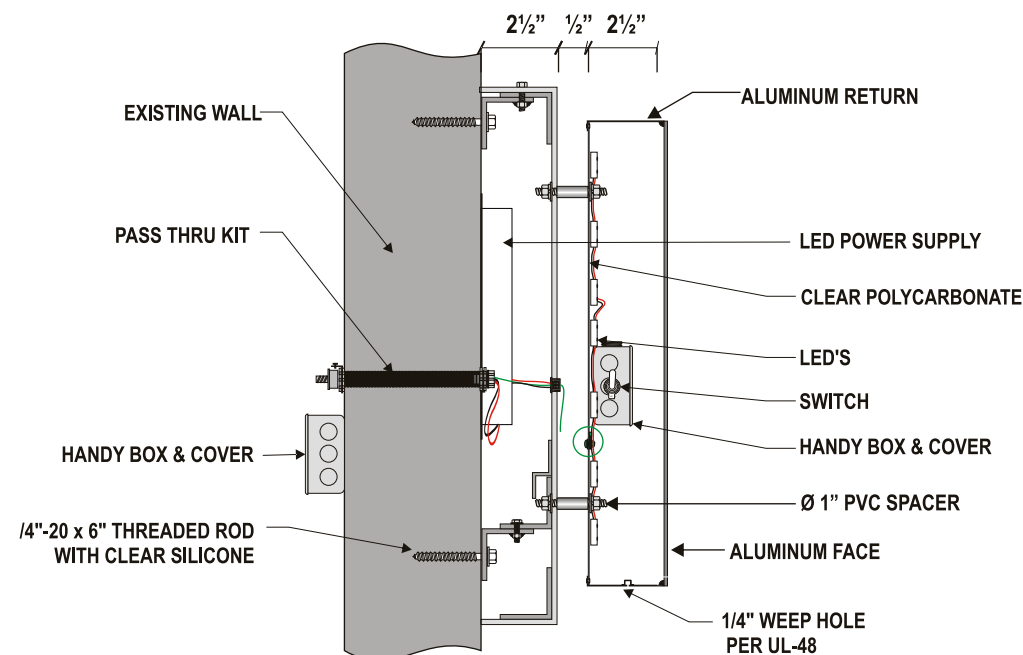
LETTERS: FABRICATED HORIZONTAL BRUSHED ALUMINUM REVERSE CHANNEL LETTERS

BACKER PANEL: SELF HINGE ALUMINUM FACE PAINTED MATT BLACK

ILLUMINATED WITH WHITE LED HALO EFFECT ON ALUMINUM PANEL SELF CONTAINED POWER SUPPLY

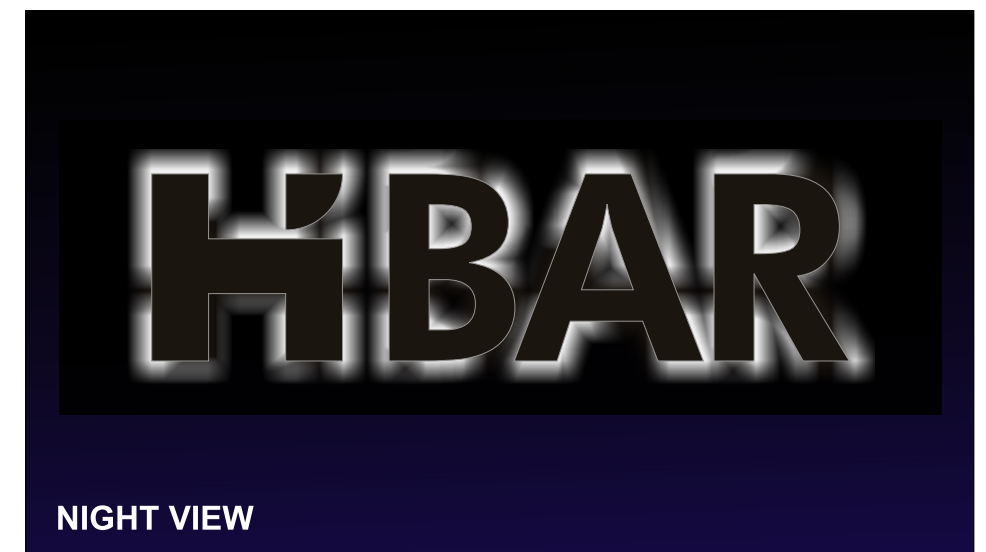
NOTE: THIS SIGN IS A PART OF THE APPROVED HYATT HOUSE EXTERIOR SIGNAGE PACKAGE, BUT IS NOT MANDATED AT ALL PROPERTIES. THE PROPERTY SHOULD DISCUSS WITH HYATT IF IT MAKES SENSE IN THEIR MARKET AND ALSO TO DETERMINE PLACEMENT ON THE BUILDING.

**NOTE: CONCEPTUAL IMAGE ONLY
VERIFY ARTWORK AND DIMENSIONS
PRIOR TO FABRICATION**



SECTION DETAILS

Scale:NTS



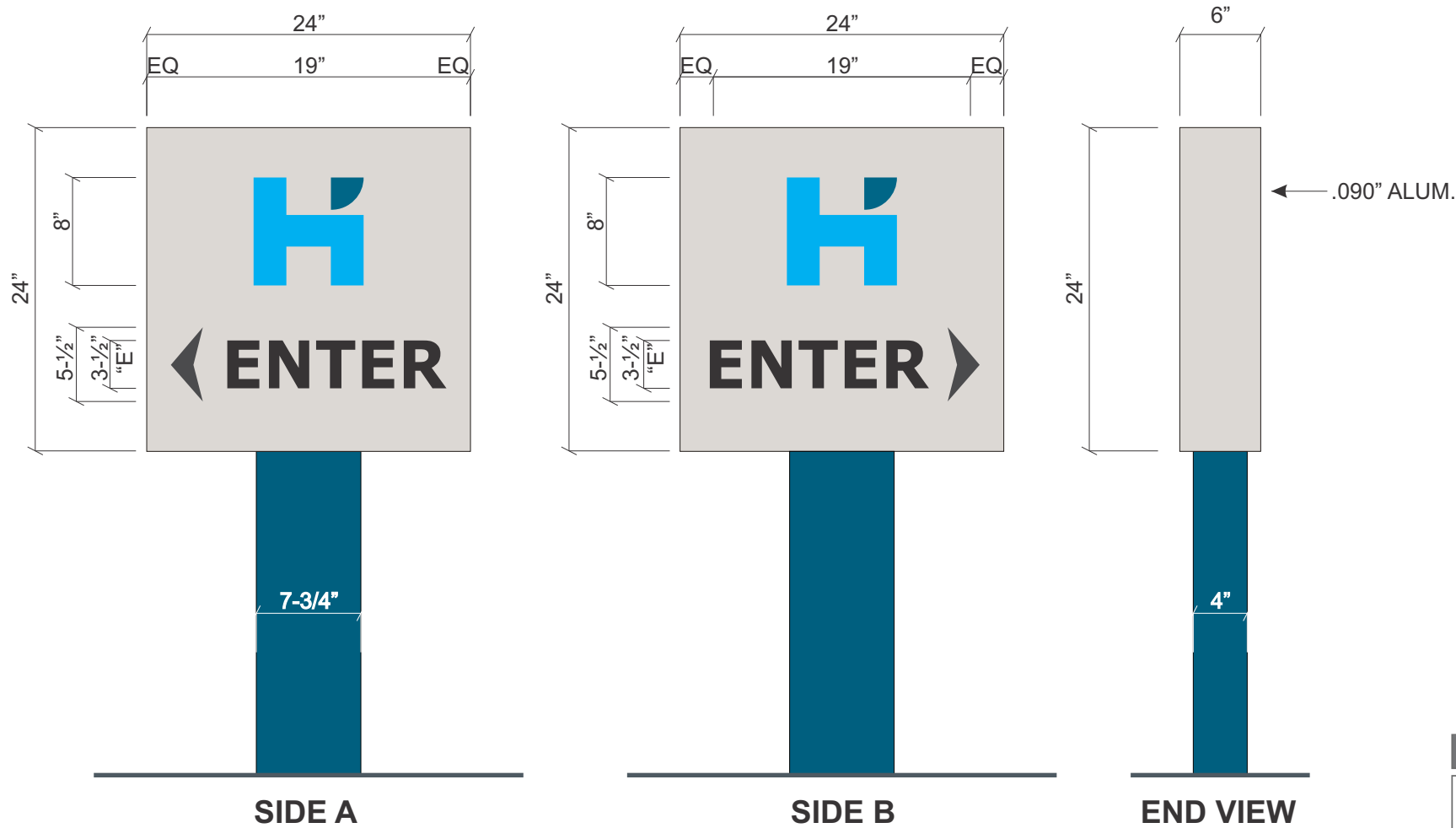
NIGHT VIEW



Date: 8-26-20	Project Name: HYATT HOUSE
Scale: NTS	Address: 12230 East Colfax Ave.
Drawn: Teland A. / WA	City / State / Zip: AURORA, CO 80011
PM: HK	Notes:

This is an original unpublished drawing created by Coast Sign, Inc. It is submitted for your personal use in conjunction with a project being planned for you by Coast Sign, Inc., And shall not be reproduced, used by or disclosed to any firm or corporation for any purpose whatsoever without written permission.

No.	Designer	Date	Revision Notes	No.	Designer	Date	Revision Notes	DESIGN DRAWING 8 of 9
1				7				Request Number: PRJ-HYHS-155145-R2
2	Jonel B.	11-01-20	Refer to Pathfinder for details	8				
3				9				
4				10				
5				11				
6				12				



DESCRIPTION

SIGN FACES:
FACES:..... .063" ALUMINUM, PAINT COOL GRAY 2,SATIN FINISH
LORD ADHESIVE TO THE ALUM. FRAME(FACE & BACK & SIDES)
APPLY FIRST SURFACE VINYL GRAPHICS.

RETURNS:..... .063" ALUMINUM, PAINT COOL GRAY 2,SATIN FINISH

LOGO: "H" CYAN BLUE #2500-2498(LAMINATE W/ WHITE OPAQUE)
"WINK" DARK BLUE 3M #3630-7570 ((LAMINATE W/ WHITE OPAQUE)

COPY & ARROW:..... 7725-12 BLACK VINYL OPAQUE

FRAME:..... 1" X 1"X .125" ALUM. TUBE

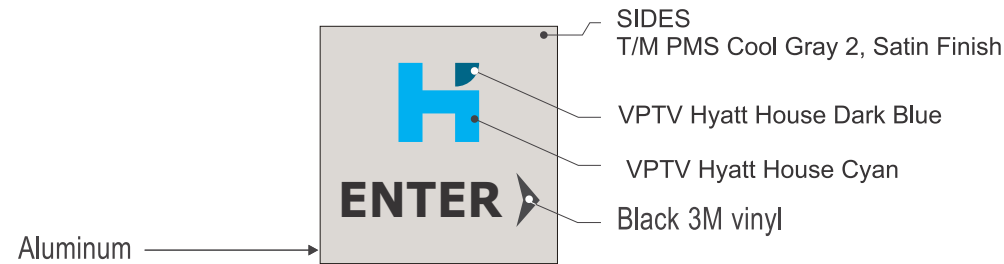
CENTER POLE:..... 4" X 2" X .250" ALUM. TUBE

WELD FRAMEWORKS TO CENTER POLE WITH 1" X 1" X .125" ALUM. ANGLE

MOUNT FRAMEWORKS TO CENTER POLE W/ BOLT & NUTS

POLE COVER:
.090" ALUM. BRAKEFORMED. PAINT PMS 308 DARK BLUE

COLORS



VPTV= MIRATEC SYSTEMS PURECOLOR DIGITAL PRINT

LOGO:
VPTV HYATT HOUSE CYAN

PAINT:
T/M PMS COOL GRAY 2, SATIN FINISH

LOGO ACCENT:
VPTV HYATT HOUSE DARK BLUE

PAINT: BLACK
VINYL: 3M VINYL

F 24" NON ILLUMINATED DF DIRECTIONAL SIGN
SCALE: 1" = 1'-0" **4.0 SQ. FT.**



COAST SIGN
INCORPORATED
1500 West Embassy St. Anaheim, CA 92802
(714) 520-9144 FAX: (714) 520-5847

Date: 8-26-20	Project Name: HYATT HOUSE
Scale: NTS	Address: 12230 East Colfax Ave.
Drawn: Teland A. / WA	City / State / Zip: AURORA, CO 80011
PM: HK	Notes:

This is an original unpublished drawing created by Coast Sign, Inc. It is submitted for your personal use in conjunction with a project being planned for you by Coast Sign, Inc., And shall not be reproduced, used by or disclosed to any firm or corporation for any purpose whatsoever without written permission.

No.	Designer	Date	Revision Notes	No.	Designer	Date	Revision Notes
1				7			
2	Jonel B.	11-01-20	Refer to Pathfinder for details	8			
3				9			
4				10			
5				11			
6				12			

DESIGN DRAWING 9 of 9

Request Number:
PRJ-HYHS-155145-R2