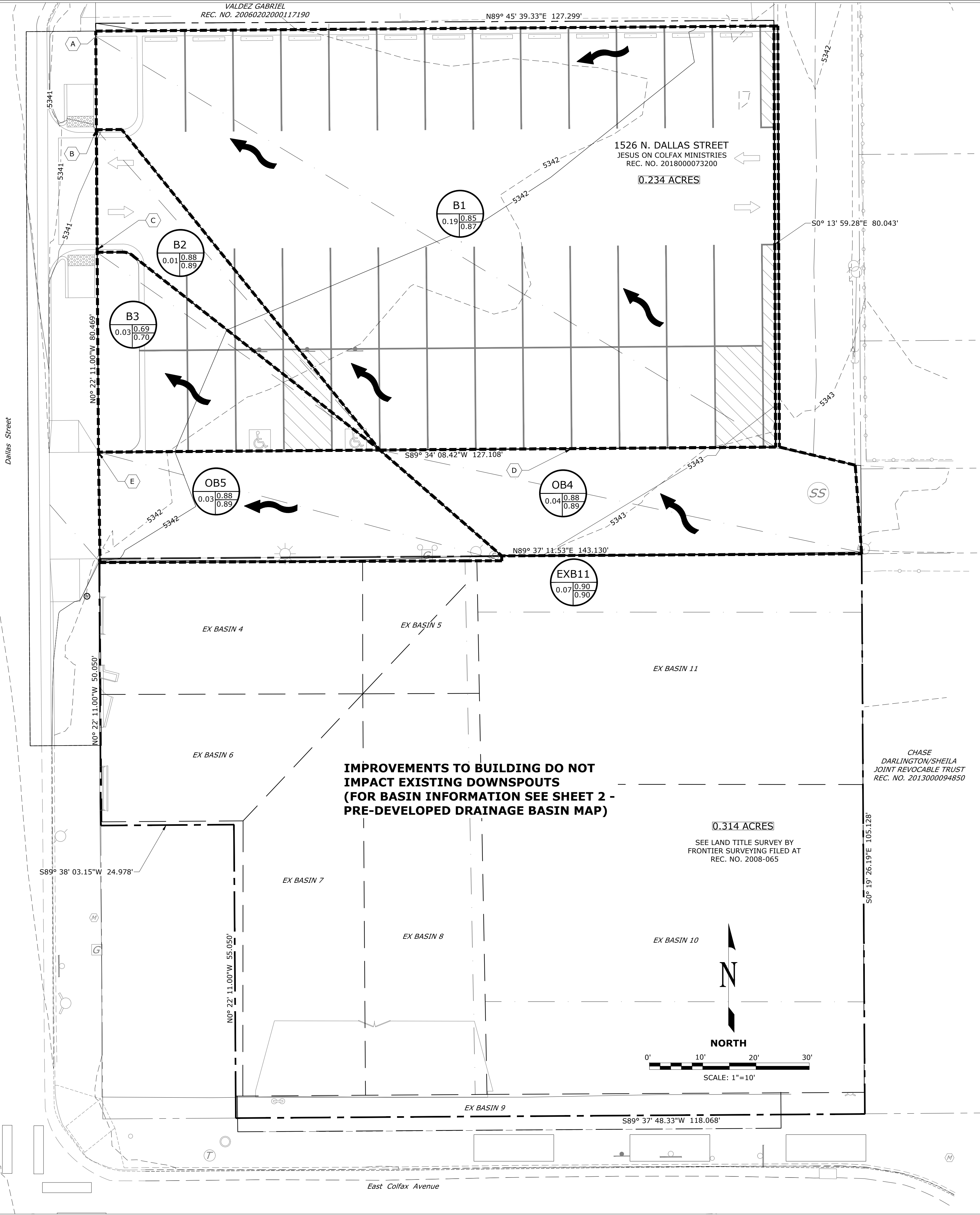
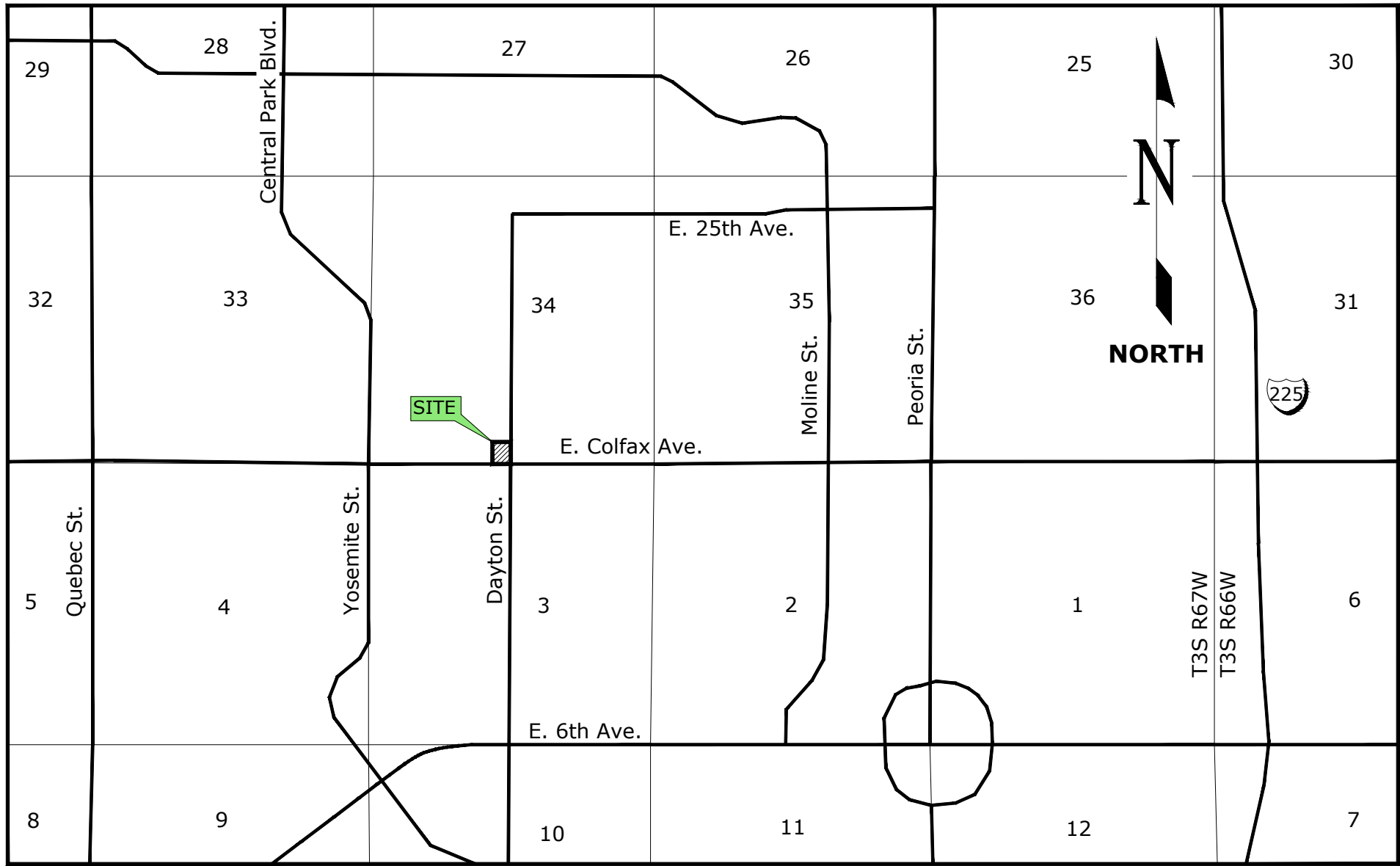


FILE NAME AND PATH: S:\Projects\20213_JOC_Site_Parking\CAD\Civil\Drawings\Site Plan\20213-POST Developed Drainage Map Plan.dwg
CTB FILE: SE STD_B&W_PALF SIZE.CTB PRINTED: February 1, 2021 BY: LAUREN ROOT



JESUS ON COLFAX BUILDING RENOVATION
PRELIMINARY DRAINAGE PLAN
PART OF THE SOUTHWEST QUARTER OF SECTION 34, TOWNSHIP 3 SOUTH, RANGE 67
WEST OF THE 6TH P.M. ,
CITY OF AURORA,
ADAMS COUNTY, COLORADO



VICINITY MAP
SCALE: N.T.S.

NOTES:

- THE JESUS ON COLFAX BUILDING RENOVATION, IS LOCATED IN PART OF THE SOUTHWEST QUARTER OF SECTION 34, TOWNSHIP 3 SOUTH, RANGE 67 WEST OF THE 6TH P.M. CITY OF AURORA, ADAMS COUNTY, STATE OF COLORADO.
- SITE SURVEY FOR THIS PROJECT WAS PREPARED BY FORESIGHT WEST SURVEYING INC., DENVER, CO. DATUM USED IS BASED ON COLORADO STATE PLANE, CENTRAL ZONE COORDINATE SYSTEM. COORDINATES SHOWN ON THIS PLAN HAVE BEEN CORRECTED TO GROUND BY AVERAGE SCALE FACTOR PER SURVEY DOCUMENTATION. SEE THE AURORA SUBDIVISION FILING NO. 962 FOR ALL SURVEY INFORMATION.
- BASIS OF BEARINGS STATEMENT REQUIRED PER 38-51-106(1)(E), C.R.S.: BEARINGS ARE BASED UPON THE WEST LINE OF LOTS 20 AND 21, BLOCK 25, BEARING N00°22'11"W, EVIDENCED BY FOUND 1" BRASS PLUGS IN SIDEWALK STAMPED FSI PLS 25953 ON 1.00' OFFSET TO THE LINE AS SHOWN ON ALTA/ACSM LAND TITLE SURVEY FILED UNDER REC. NO. 2008-065, BOOK 1, PAGE 3485.
- ELEVATIONS ARE BASED UPON CITY OF AURORA BENCH MARK 356734SE002 (G-005A) BEING A 3" BRASS CAP @ NE COR CURB OPENING INLET BEING APPROX.. 50 FT EAST OF THE NE COR OF THE INTERSECTION OF DAYTON AND COLFAX. ELEVATION: 5343.40 NAVD 1988.
- PEAK FLOW RATES (Q) CALCULATED BY UDFCD PEAK RUNOFF PREDICTION BY THE RATIONAL METHOD WORKBOOK, VERSION 2.00 (MAY 2017).
- SEE SITE PLAN DRAWINGS FOR MORE DETAIL ON PROPOSED SITE REDEVELOPMENT DESIGN.
- CITY OF AURORA PLAN REVIEW IS ONLY FOR GENERAL CONFORMANCE WITH CITY OF AURORA DESIGN CRITERIA AND THE CITY CODE. THE CITY IS NOT RESPONSIBLE FOR THE ACCURACY AND ADEQUACY OF THE DESIGN, OF DIMENSIONS AND ELEVATIONS WHICH SHALL BE CONFIRMED AND CORRELATED AT THE JOB SITE. THE CITY OF AURORA, THROUGH THE APPROVAL OF THIS DOCUMENT, ASSUMES NO RESPONSIBILITY FOR THE COMPLETENESS AND/OR ACCURACY OF THIS DOCUMENT
- SEE FINAL DRAINAGE REPORT FOR DETAILED CALCULATIONS AND PRE-DEVELOPED DRAINAGE BASIN MAP.

LEGEND

- PROPERTY LINE
- ADJACENT PROPERTY LINES
- EX LOT LIMITS
- EX CONCRETE EDGE
- EX MAJOR CONTOUR
- EX MINOR CONTOUR
- PRO MAJOR CONTOUR
- PRO MINOR CONTOUR
- PRO BASIN FLOWPATH
- PRO BASIN DELINEATION LIMIT
- DESIGN POINT
- FLOW DIRECTION DESIGNATION
- EXISTING TEXT/CALLOUT
- PROPOSED TEXT/CALLOUT
- BASIN BUBBLE
 - BASIN ID
 - COEFFICIENT MINOR
 - COEFFICIENT MAJOR
 - ACRES

Drawing Index	
Sheet Number	Sheet Title
1	POST-DEVELOPED DRAINAGE BASIN MAP
2	PRE-DEVELOPED DRAINAGE BASIN MAP

DRAINAGE BASIN SUMMARY (*SEE NOTE 5)					
BASIN	DESIGN POINT	AREA (ACRES)	Q2 (CFS)	Q10 (CFS)	Q100 (CFS)
B1	A	0.19	0.44	0.72	1.28
B2	B	0.01	0.04	0.06	0.11
B3	C	0.03	0.05	0.08	0.14
OB4	D	0.04	0.09	0.15	0.27
OB5	E	0.03	0.08	0.13	0.23

Preliminary
Not For Construction

SE SAMUEL ENGINEERING
WE PROVIDE SOLUTIONS
8450 E. Crescent Parkway, Suite 200
Greenwood Village, CO 80111
Phone: 303.714.4840
Fax: 303.714.4800
Web: samuelengineering.com
OUR MINISTRY TO YOURS
LEGACY DESIGN

JESUS ON COLFAX
16748 East Smoky Hill Road
Suite 9C, Box 222
Centennial, CO 80015
303.589.3213
Shawn Sikkema

JESUS ON COLFAX
PRELIMINARY DRAINAGE PLAN
9605 EAST COLFAX AVE
AURORA, CO 80010

COPYRIGHT
Samuel Engineering, Inc.
ALL DRAWN AND WRITTEN INFORMATION APPEARING HEREIN SHALL NOT BE DUPLICATED, DISCLOSED, OR OTHERWISE USED WITHOUT THE EXPRESS WRITTEN CONSENT OF SAMUEL ENGINEERING, INC.

REV	DATE	ISSUED FOR
A	02-01-21	CITY REVIEW

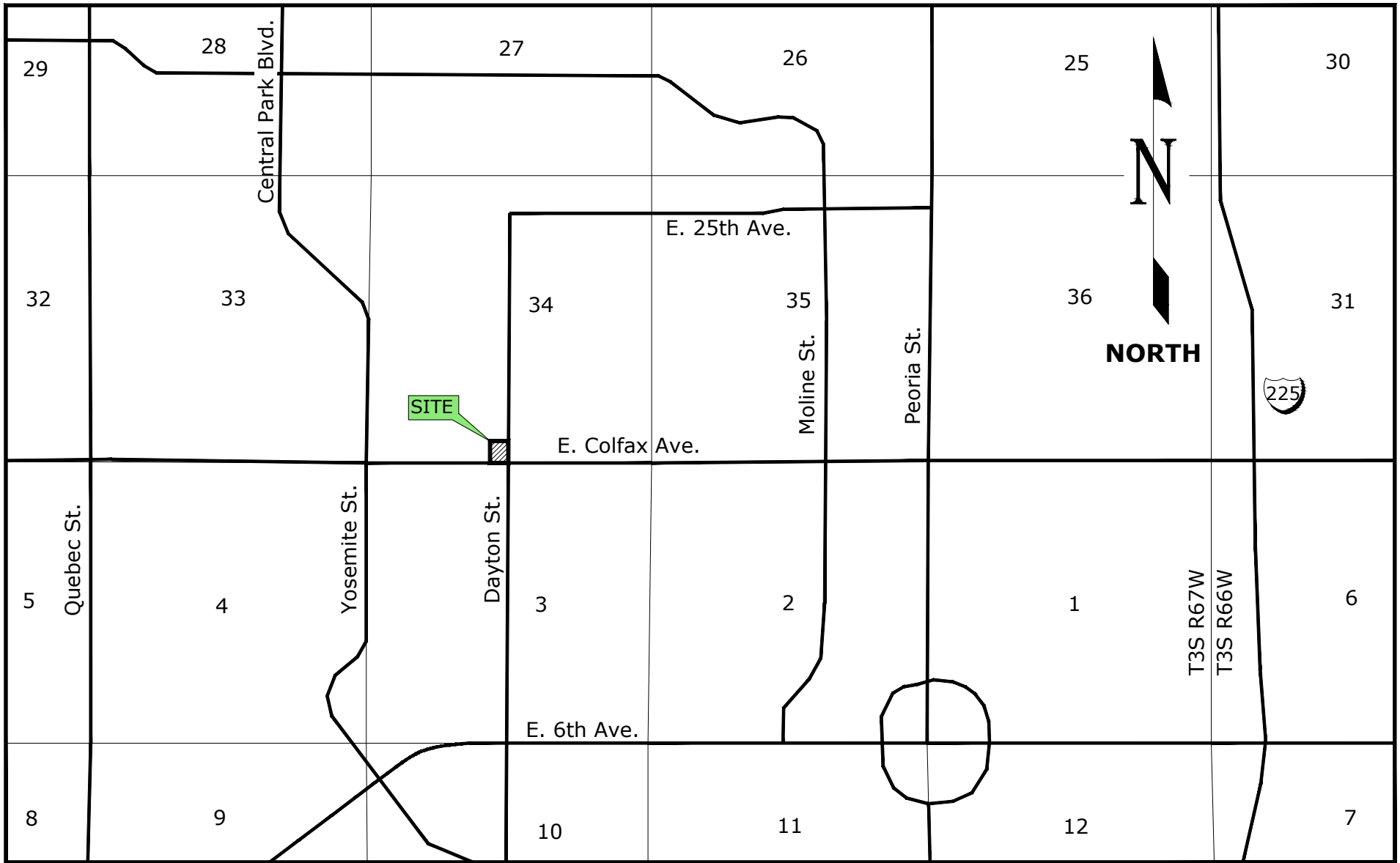
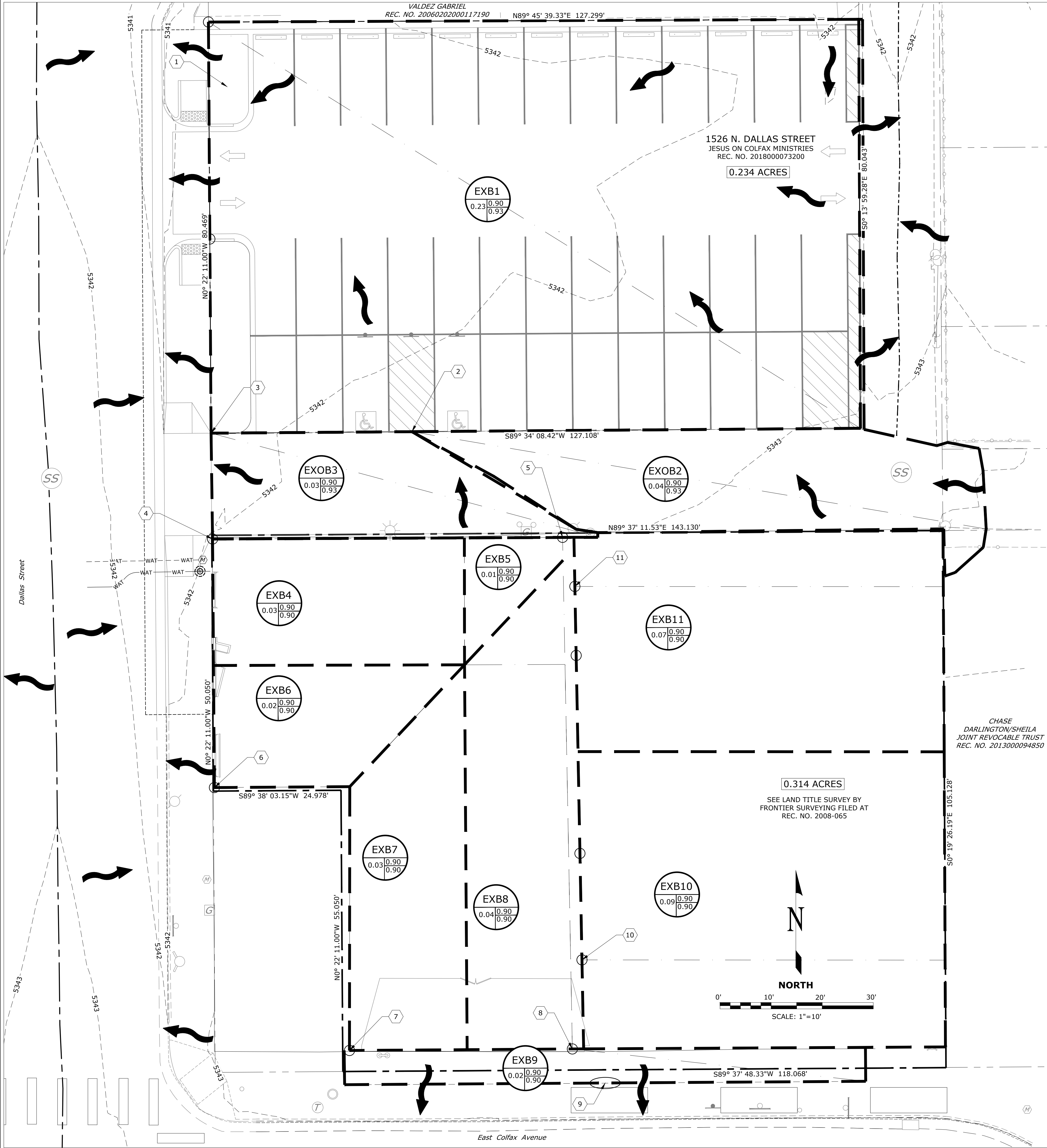
POST-DEVELOPED DRAINAGE BASIN MAP

PROJECT NUMBER	DATE
20213	01-29-21

1

DRAWN BY	DESIGNED BY	APPROVED BY
BPS	LER	MCB

FILE NAME AND PATH: S:\Projects\20213_JOC_Site_Parking\CAD\Civil\Drawings\Site Plan\20213-PRE Developed Drainage Map Plan.dwg
CTB FILE: SE STD_B&W.ctb
DATE: February 1, 2021
BY: LAUREN ROOT



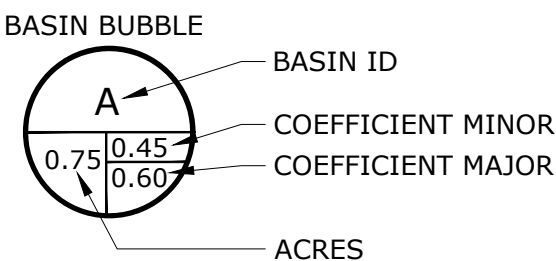
VICINITY MAP
SCALE: N.T.S.

NOTES:

- THE JESUS ON COLFAX BUILDING RENOVATION, IS LOCATED IN PART OF THE SOUTHWEST QUARTER OF SECTION 34, TOWNSHIP 3 SOUTH, RANGE 67 WEST OF THE 6TH P.M. CITY OF AURORA, ADAMS COUNTY, STATE OF COLORADO.
- SITE SURVEY FOR THIS PROJECT WAS PREPARED BY FORESIGHT WEST SURVEYING INC., DENVER, CO. DATUM USED IS BASED ON COLORADO STATE PLANE, CENTRAL ZONE COORDINATE SYSTEM. COORDINATES SHOWN ON THIS PLAN HAVE BEEN CORRECTED TO GROUND BY AVERAGE SCALE FACTOR PER SURVEY DOCUMENTATION. SEE THE AURORA SUBDIVISION FILING NO. 962 FOR ALL SURVEY INFORMATION.
- BASIS OF BEARINGS STATEMENT REQUIRED PER 38-51-106(1)(E), C.R.S.: BEARINGS ARE BASED UPON THE WEST LINE OF LOTS 20 AND 21, BLOCK 25, BEARING N00°22'11"W, EVIDENCED BY FOUND 1" BRASS PLUGS IN SIDEWALK STAMPED FSI PLS 25953 ON 1.00' OFFSET TO THE LINE AS SHOWN ON ALTA/ACSM LAND TITLE SURVEY FILED UNDER REC. NO. 2008-065, BOOK 1, PAGE 3485.
- ELEVATIONS ARE BASED UPON CITY OF AURORA BENCH MARK 3S6734SE002 (G-005A) BEING A 3" BRASS CAP @ NE COR CURB OPENING INLET BEING APPROX. 50 FT EAST OF THE NE COR OF THE INTERSECTION OF DAYTON AND COLFAX. ELEVATION: 5343.40 NAVD 1988.
- PEAK FLOW RATES (Q) CALCULATED BY UDFCD PEAK RUNOFF PREDICTION BY THE RATIONAL METHOD WORKBOOK, VERSION 2.00 (MAY 2017).

LEGEND

- PROPERTY LINE
- ADJACENT PROPERTY LINES
- EX LOT LIMITS
- EX CONCRETE EDGE
- EX MAJOR CONTOUR
- EX MINOR CONTOUR
- EX BASIN FLOWPATH
- EX BASIN DELINEATION LIMIT
- DESIGN POINT
- FLOW DIRECTION DESIGNATION
- EXISTING TEXT/CALLOUT
- PROPOSED TEXT/CALLOUT



DRAINAGE BASIN SUMMARY (*SEE NOTE 5)					
BASIN	DESIGN POINT	AREA (ACRES)	Q2 (CFS)	Q10 (CFS)	Q100 (CFS)
EXB1	1	0.23	0.59	0.98	1.76
EXOB2	2	0.04	0.10	0.17	0.31
EXOB3	3	0.03	0.07	0.11	0.21
EXB4	4	0.03	0.07	0.12	0.21
EXB5	5	0.01	0.03	0.05	0.09
EXB6	6	0.02	0.05	0.09	0.15
EXB7	7	0.03	0.08	0.14	0.25
EXB8	8	0.04	0.09	0.16	0.29
EXB9	9	0.02	0.04	0.07	0.12
EXB10	10	0.09	0.22	0.40	0.70
EXB11	11	0.07	0.17	0.30	0.52

Preliminary
Not For Construction

SE

SAMUEL ENGINEERING

WE PROVIDE SOLUTIONS

8450 E. Crescent Parkway, Suite 200
Greenwood Village, CO 80111
Phone: 303.714.4840
Fax: 303.714.4800
Web: samuelengineering.com

OUR MINISTRY TO YOURS
LEGACY DESIGN

JESUS ON COLFAX

16748 East Smoky Hill Road
Suite 9C, Box 222
Centennial, CO 80015
303.589.3213
Shawn Sikkema

JESUS ON COLFAX

PRELIMINARY DRAINAGE PLAN

9605 EAST COLFAX AVE
AURORA, CO 80010

COPYRIGHT
Samuel Engineering, Inc.

ALL DRAWN AND WRITTEN INFORMATION APPEARING
HEREIN SHALL NOT BE DUPLICATED, DISCLOSED, OR
OTHERWISE USED WITHOUT THE EXPRESS WRITTEN
CONSENT OF SAMUEL ENGINEERING, INC.

REV	DATE	ISSUED FOR
A	02-01-21	CITY REVIEW

PRE-DEVELOPED
DRAINAGE BASIN
MAP

PROJECT NUMBER
20213

DATE
01-29-21

2

DRAWN BY
BPS

DESIGNED BY
LER

APPROVED BY
MCB