

LOT 2, BLOCK 1, J.Q.H. COMMERCIAL PARK SUBDIVISION FILING NO. 1 AND
LOT 1, BLOCK 1, J.Q.H. COMMERCIAL PARK SUBDIVISION FILING NO. 2,
SITUATED IN A PART OF THE SOUTHWEST 1/4 OF SECTION 20, TOWNSHIP
5 SOUTH, RANGE 66 WEST OF THE 6th PRINCIPAL MERIDIAN,
CITY OF AURORA, COUNTY OF ADAMS, STATE OF COLORADO
SHEET 2



DATA	HOLIDAY INN	CONVENTION CENTER
LAND AREA WITHIN PROPERTY LINES	598,732 SQUARE FEET	
GROSS FLOOR AREA (146-2001)	169,352 SQUARE FEET	70,125 SQUARE FEET
NUMBER OF BUILDINGS	1	
NUMBER OF STORIES	6	1
MAXIMUM BUILDING HEIGHT	68' 2"	25'
TOTAL BUILDING COVERAGE	146,135 SQUARE FEET	
HARD SURFACE AREA	399,321 SQUARE FEET	
LANDSCAPE AREA	53,276 SQUARE FEET	
PRESENT ZONING DISTRICT	B-3	
CURRENT AND PROPOSED USES	HOTEL	CONVENTION CENTER
PERMITTED MAXIMUM SIGN AREA BY SECTION 146-1613(E)	314 SQUARE FEET (BASED ON 328 FEET OF BUILDING FRONTAGE)	330 SQUARE FEET (BASED ON 360 FEET OF BUILDING FRONTAGE)
PROPOSED SIGN AREA	754 SQUARE FEET	262 SQUARE FEET →
TYPE OF SIGNS PROPOSED	GROUND (3) A, WALL (3) B, C, D	GROUND (1) G WALL (1) H
PARKING SPACES REQUIRED	359	
PARKING SPACES PROVIDED	925 1010	
ACCESSIBLE PARKING REQUIRED	20	
ACCESSIBLE PARKING PROVIDED	NET LOSS 8	
LOADING SPACES REQUIRED	8	
LOADING SPACES PROVIDED	5	

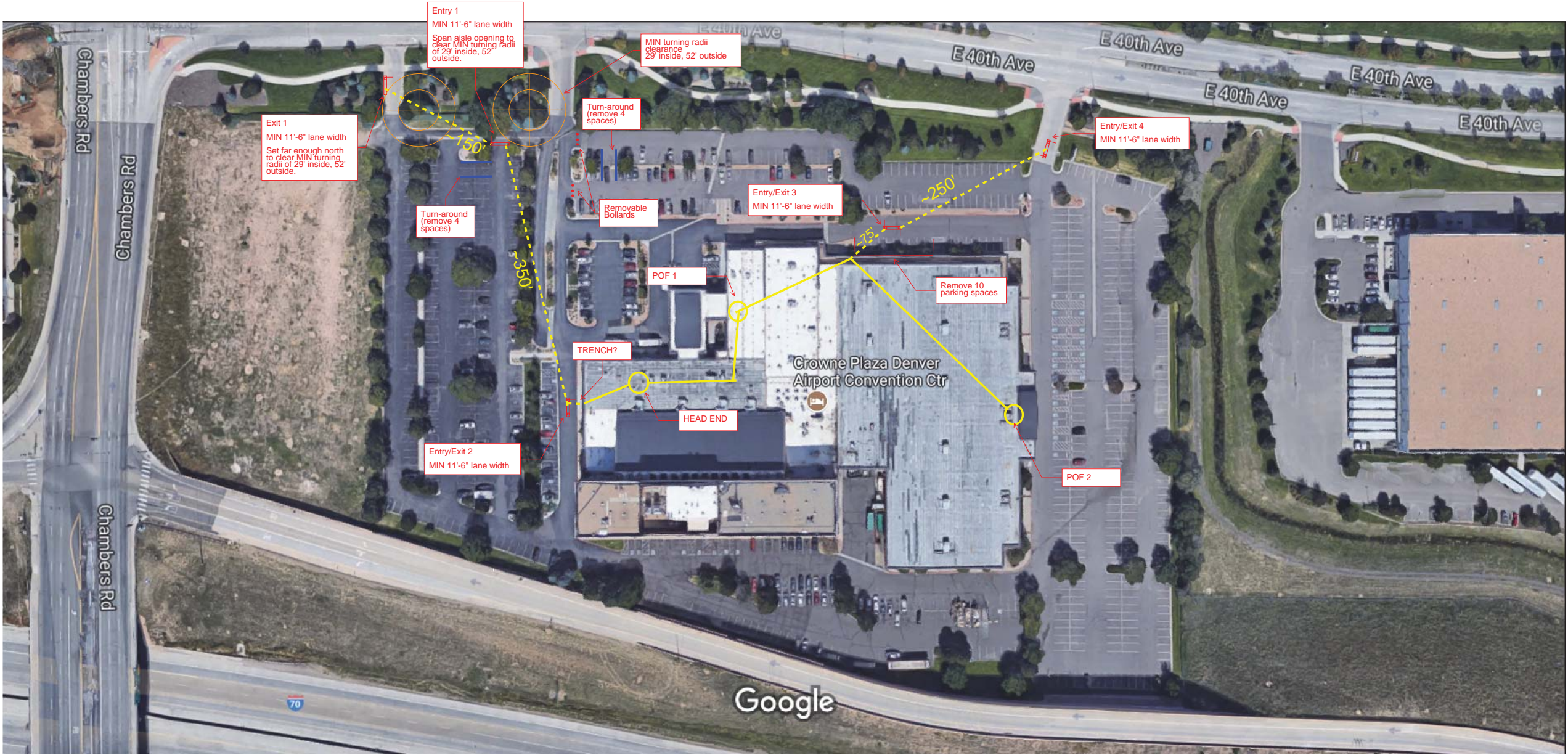
1016 SQ FT

20 ~~WATER CHANGE~~ MINOR AMENDMENT - 1981-6032-22 12/3/07

REFER TO SHEET 1 FOR SITE PLAN AMENDMENTS
REFER TO SHEET 4 FOR GENERAL NOTES
REFER TO SHEET 4 FOR SITE DETAILS

Crowne Plaza (Holiday Inn)

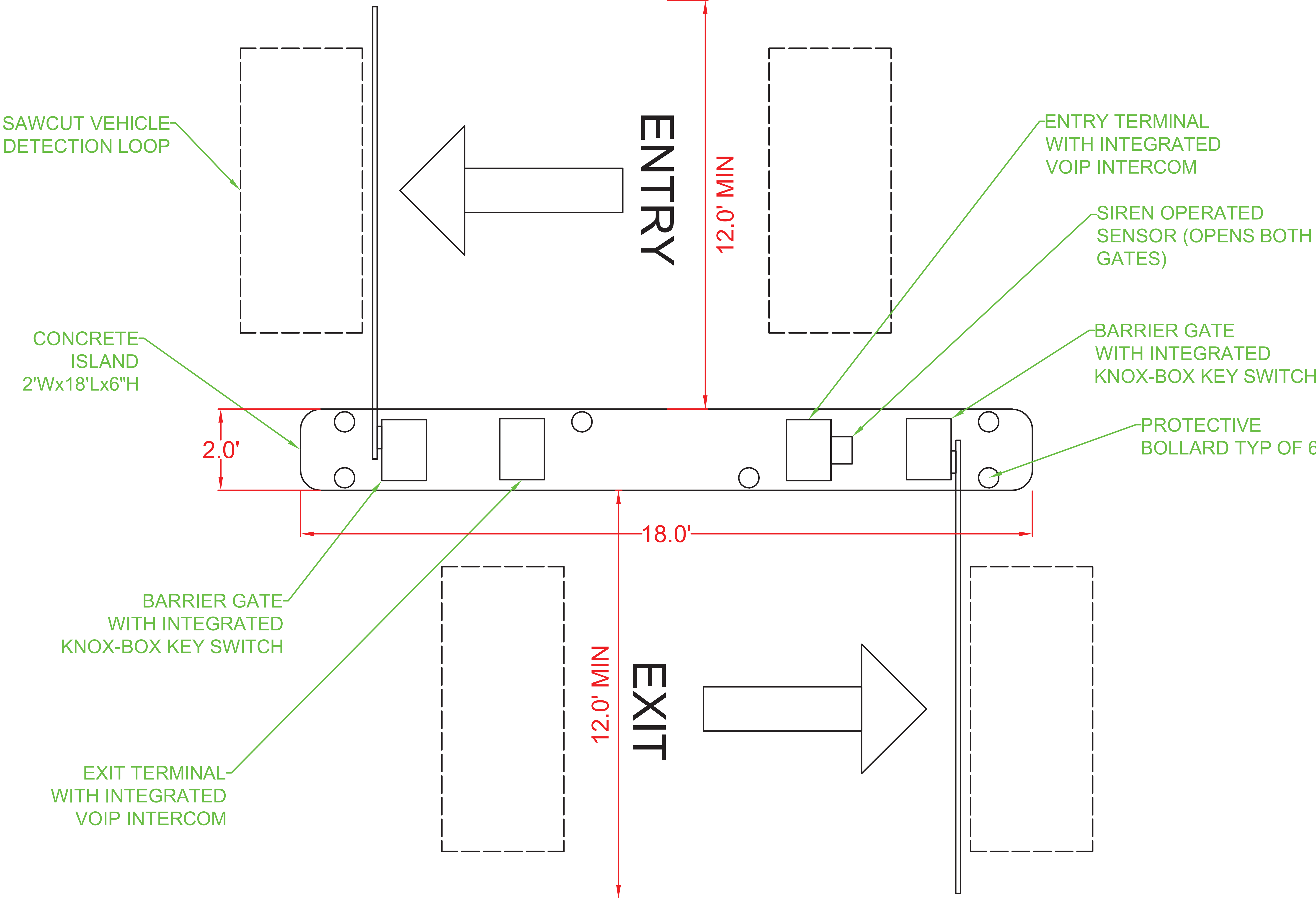
Electrical Plans




15500 E 40TH AVE

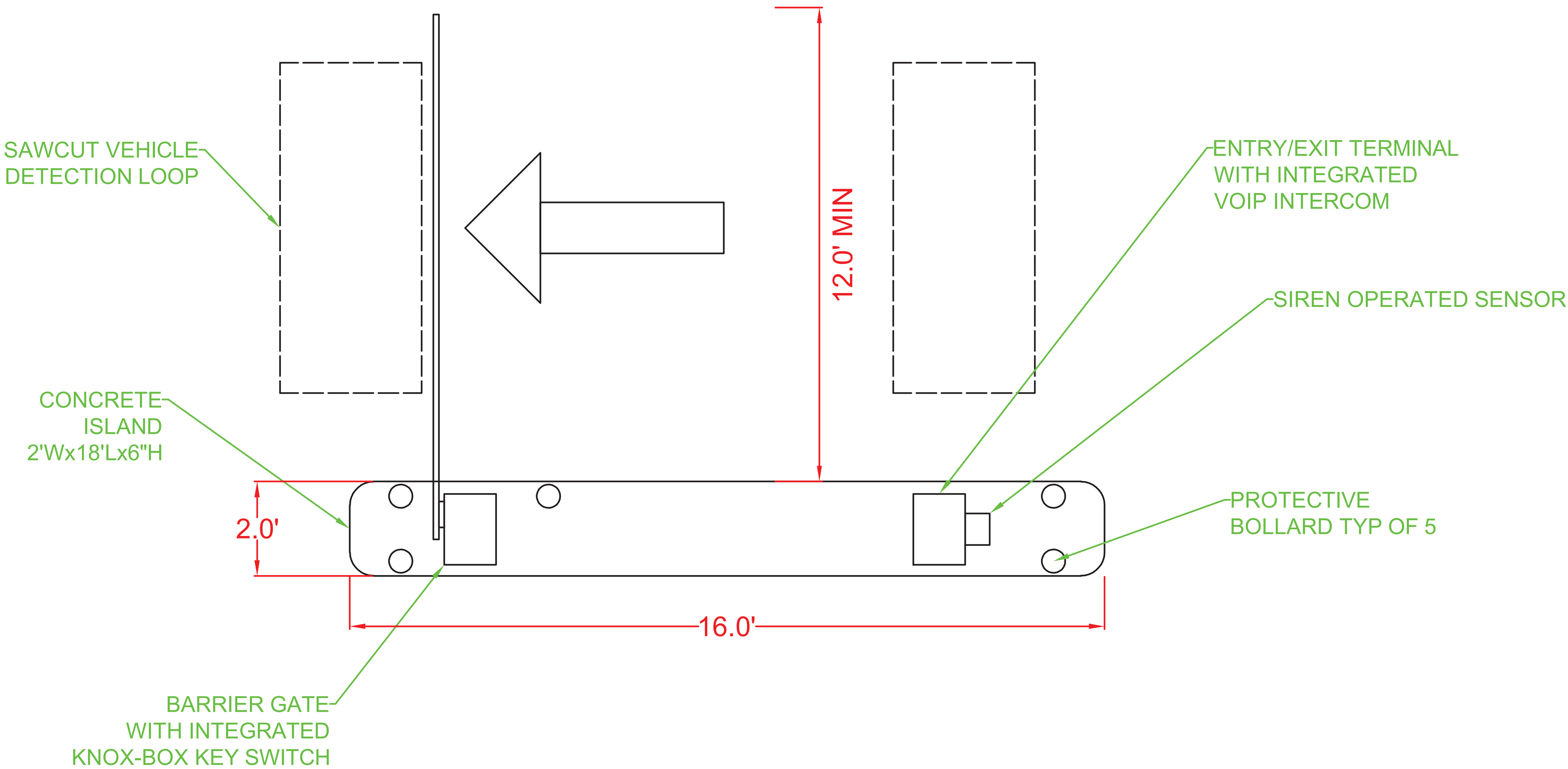
NOTE: (2) 20 Amp New Circuits (1) from Panel PDF 1 and (1) from Panel PDF 2. See plan above for routing of new conductors.


Detail A - Bidirectional Parking Controls

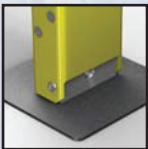


NOTES		PROJECT: Parking Equipment - Detail A		ISSUE DATE: 2/12/18		<div>MOUNTAIN PARKING EQUIPMENT</div> <div>2009 S. CHEROKEE ST. DENVER, CO 80223</div> <div>720-259-4884</div>	<div></div> <div>MOUNTAIN PARKING EQUIPMENT</div>
This drawing is confidential and the property of Mountain Parking Equipment. It may not be reproduced in whole or in part, used, or disclosed without consent. It may not be used directly or indirectly for purposes detrimental to the interests of Mountain Parking Equipment.		LOCATION: Crowne Plaza DIA - 15500 E 40th Ave		DRAWING #: A1			
		REVISIONS:		SCALE:			
				SIZE:			
				DRAWN BY: KMH			
				CHECKED BY: SS			

Detail B - Unidirectional Parking Controls



NOTES This drawing is confidential and the property of Mountain Parking Equipment. It may not be reproduced in whole or in part, used, or disclosed without consent. It may not be used directly or indirectly for purposes detrimental to the interests of Mountain Parking Equipment.	PROJECT: Parking Equipment - Detail B	ISSUE DATE: 2/12/18	MOUNTAIN PARKING EQUIPMENT 2009 S. CHEROKEE ST. DENVER, CO 80223 720-259-4884	
	LOCATION: Crowne Plaza DIA - 15500 E 40th Ave	DRAWING #: B1		
	REVISIONS:	SCALE:		
		SIZE:		
		DRAWN BY: KMH		
		CHECKED BY: SS		



MaxiForce Traffic Control Collapsible Bollards are a cost effective and flexible barrier solution that allows you to control, re-route or grant quick access to suit traffic flow requirements. The bollards offer patented technology that enables the bollards to be collapsed for vehicle passage and then quickly and easily reset. These collapsible bollards also contain a unique breakaway feature allowing emergency vehicles to penetrate the passage or roadway without exiting their vehicle. The bollard units may then be repaired with simple replacement inserts without the need for a total bollard replacement.

Features:

- ✺ FOLDS TO 3-9/16" HIGH ABOVE ROAD SURFACE
- ✺ UNLOCKS AND FOLDS DOWN QUICKLY
- ✺ FOLDS UP AND RE-LOCKS RAPIDLY
- ✺ BREAKAWAY FEATURE ENSURES EASY REPAIR
- ✺ BREAKAWAY FEATURE ALLOWS EMERGENCY ACCESS
- ✺ THREE BASE TYPES FOR VERSATILE INSTALLATION
- ✺ ACCEPTS THREE DIFFERENT HEAD STYLES
- ✺ AVAILABLE IN OVER 80 COLORS & FINISHES

OPERATION

Standard Hydrant-Wrench Operated Bollard



Ideal for locations requiring traffic control while allowing designated vehicles to quickly pass with the use of a fire hydrant wrench. The standard hydrant nut is a 5-sided AWWA nut. (Other nut styles available.)

Standard Padlock Operated Bollard



Ideal for designated locations where traffic control is required and only authorized vehicles and personnel with the appropriate key may unlock the bollard and pass through.

HEAD STYLES

The MaxiForce line of bollards has several style options, including the choice of head styles to top the bollard bodies. All three bollard heads are removable and interchangeable. All heads attach to the body with two screws.



SS1

SS2

SS3

BASE TYPES

MaxiForce Collapsible Bollards have three base options to fit installation requirements. Collapsible bollard operation is not affected by the choice of base type.



EZ

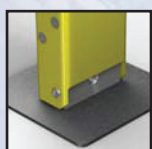
Universal

Simple

USES

- ✺ Office Buildings
- ✺ School Grounds
- ✺ Parking Areas
- ✺ College Campuses
- ✺ Military Installations
- ✺ Playgrounds & Parks
- ✺ Malls and Shopping Centers
- ✺ Residential Subdivisions
- ✺ Ball Parks and Stadiums
- ✺ Apartment Complexes
- ✺ Biking Trails
- ✺ Pedestrian Walkways
- ✺ City Downtown Areas
- ✺ Playgrounds
- ✺ Government Facilities

To learn more about these products visit www.maxiforcebollards.com



MaxiForce Traffic Control Collapsible Bollards' patented breakaway insert is a distinctive feature that allows emergency and safety personnel immediate access beyond the bollard without leaving the vehicle, saving valuable response time. This patented breakaway feature is on all collapsible bollards, regardless of the operation. It is easy to change from one insert to the other to meet your current needs.

Features:

- ✺ ALLOWS FOR EMERGENCY ACCESS
- ✺ EASILY REPLACABLE INSERTS

- ✺ BOLLARD CAN BE PUT BACK INTO SERVICE QUICKLY
- ✺ INSERTS AVAILABLE IN FOUR VERSIONS TO FIT YOUR NEED

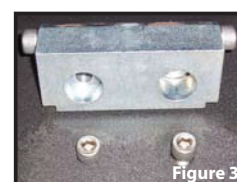
OPERATION

The breakaway safety feature works by allowing the unit to "break away" from the base unit permitting access without using the wrench operation or removing the padlock. Two unique inserts are designed to shear when pushed by a vehicle. This gives the vehicle access without causing significant damage to the bollard or vehicle. The feature ensures there will never be a time when emergency personnel cannot access protected or blocked areas. By replacing the inexpensive inserts, the bollard can be placed back into service quickly by use of a standard allen wrench.

Figure 1 - Bollard unit in collapsed position. The pivot block attaches to the base plate using two bolts placed in from the top of the pivot block.

Figure 2 - Pivot Block. Two bolts on either side of the block attach the body to the pivot block on which the body rotates when collapsing. These are the only bolts required to mount a unit on the base and the only ones required to remount if the unit is sheared off due to the breakaway feature.

Figure 3 - The pivot block and base top after a unit has been sheared off. The two mounting bolts remain in the base and the pivot block and body (not attached in photo) are laid over. The two inserts (visible in the bottom of the pivot block holes) would be removed and replaced.



INSERT TYPES

MaxiForce bollard inserts come in four versions – standard, heavy-duty, steel and non-breakaway. These various inserts give you choices to fit your locations operation and particular conditions. All inserts types are available for purchase with the original order and as replacement parts.

Part (Part Number)	Description
Standard Insert (P-145)	Aluminum insert allows the unit to breakaway in lieu of damaging the bollard. It goes in the pivot block and the mounting screws go through the insert, into the base.
Heavy Duty Insert (P-150)	Heavier aluminum insert that allows the unit to breakaway in lieu of damaging the bollard. It goes in the pivot block and the mounting screws go through the insert, into the base. This insert makes it more difficult to breakaway.
Steel Insert (P-151)	This steel insert makes the force required to breakaway the unit more substantial than the two aluminum inserts. It goes in the pivot block and the mounting screws go through them into the base.
Non-Breakaway Insert (P152)	This steel insert removes the breakaway capability and will cause damage to the bollard and vehicle when struck.

To learn more about these products visit www.maxiforcebollards.com



Technical Specifications

Basic Concept

The Siren-Operated Sensor (SOS) is designed to respond swiftly to the “YELP” mode of all standard sirens. A reminder decal is provided to be placed on each entry gate. Responders already own their siren. This device represents Public Safety without spending Public Funds. The SOS is the nation’s most widely used Uniform Emergency Gate Access.

Installation and Testing

Since all gate operators use 9 to 30 Volts AC or DC for their electronic controls, this source can easily be used to power the mini requirements of the SOS. A demonstration “YELP audio CD is provided, along with instructions, with each SOS sold.

Technical Specifications

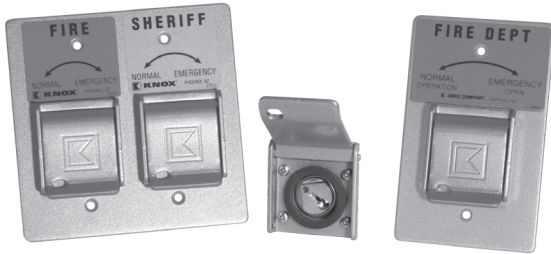
The Frequency response of the Siren-Operated Sensor is from 900Hz to 6Khz. The SOS relies on a time-varying frequency input in this range. This, plus proprietary techniques, allows the microprocessor to respond to the siren’s “YELP” with a dry relay closure in 2.5 seconds.

- The SOS uses an unidirectional microphone. Alignment is not necessary.
- Range of the SOS is adjustable – 5 to 50 feet or more. A potentiometer located on the PC Board provides this adjustability. The SOS is not affected by ambient light.
- The PC board is mounted in a 3.5” x 4.7” x 2.4” weather-tight enclosure.
- The unit weight is approximately 8 oz.
- The power requirements are 9-30 Volts AC or DC with approximately 1 mA Draw. When activated it has a 25 mA Draw.
- Programmable to be momentary relay activation , 15 minute hold, or Latch.

Warranty

The SOS has a five year warranty when installed according to the manufacturer’s Specifications.

For Emergency Override



Gated communities, apartment complexes, parking garages, pedestrian gates and industrial receiving areas are just a few applications of the Knox® electric override key switch. It can be ordered with single or dual key options for fire, EMS and law enforcement access.

Features and Benefits

- Single or dual key switch
- Fire, EMS or law enforcement identification labels
- One position, two position or momentary switch
- Face plate and lock cover ensure weather resistant operation.

Electrical Data

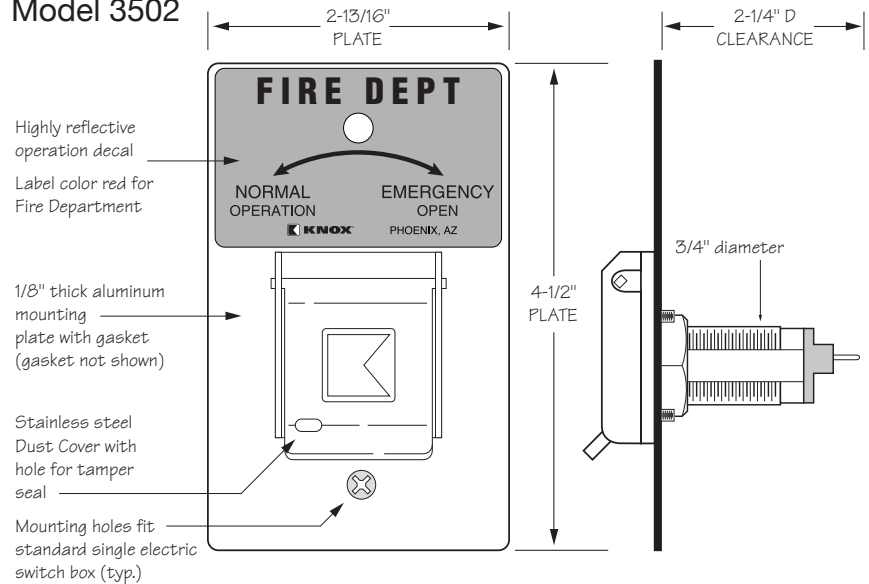
- SWITCH: SPDT or DPDT
- 7 A resistive, 4 A inductive, (sea level), 28 VDC.
- 7 A resistive, 2.5 A inductive, (50,000 ft.), 28 VDC.
- 7 A resistive or inductive, 115 VAC., 60 Hz.
- UL® and CSA listed: 7 A, 250 VAC.
- Temperature tolerance up to +180° F.

Knox® Rapid Entry System

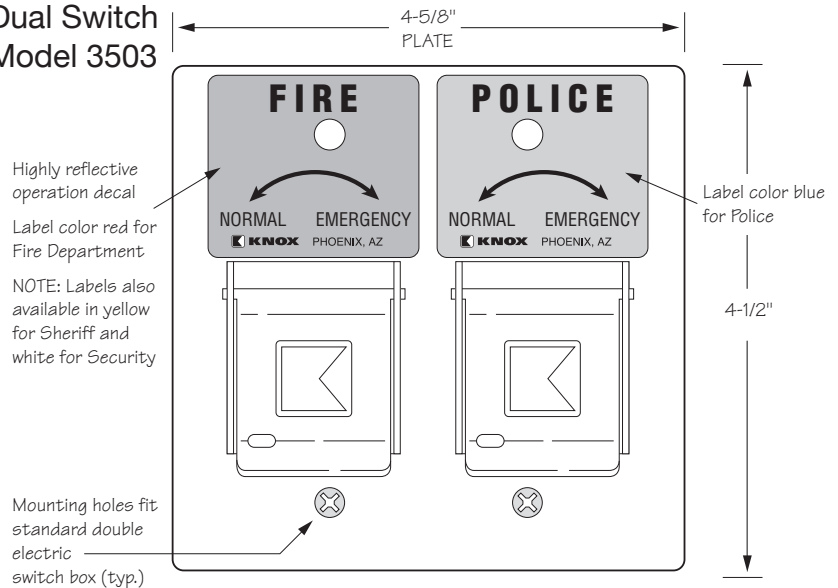
The Knox Company manufactures a complete line of high security products including KnoxBox key boxes, key vaults, cabinets, key switches, padlocks, locking FDC caps, plugs and electronic master key security systems. For more information or technical assistance, please call Customer Service at 1-800-



Single Switch Model 3502



Dual Switch Model 3503



Ordering Specifications

Dimensions:
Switch:

Requires 2 1/4" recessed depth x 3/4" diameter SPDT or DPDT; 7A resistive, 4A inductive., key removable two position.

Mounting:

Key switch is designed to be recess mounted.

P/N:

3500 Series Knox Gate & Key Switch (mfr's cat. ID)

Mfr's Name:

KNOX COMPANY

Fire/Law Enforcement Rapid Entry System

Exterior Padlock Features and Benefits

Knox Padlocks are operated with the same Knox Master Key used for other Knox Rapid Entry System devices. The exterior, heavy duty Knox Padlock (Model 3770) with a stainless steel shackle is designed for securing perimeter or fire access gates, industrial equipment yards and residential storage areas. The shrouded all weather padlock (Model 3772) provides additional security against pry and cut attacks.

- Rust free, all-weather stainless steel shackle
- Heavy-duty lock design and solid brass body resists pull attacks
- Lock and body cover protects padlocks from harsh weather conditions and outdoor sprinkler systems
- Medeco® cylinder has a UL 437 rating not offered by most padlock manufacturers
- Choice of ID label (Fire/red, EMS/white, Police/blue, Sheriff/gold, Security/white)

Interior Padlock Features and Benefits

The Knox interior padlock (Model 3771) is designed to secure fire sprinkler control systems, hazardous chemical supplies, restricted utility areas and equipment lockers. The UL® listed padlock resists pull attacks.

- Hardened steel shackle; 5/16" diameter shackle fits on a wider range of interior hasps
- Heavy-duty lock design and steel body resists pull attacks
- Medeco cylinder has a UL 437 rating not offered by most padlock manufacturers
- Choice of ID label (Fire/red, EMS/white, Police/blue, Sheriff/gold, Security/white)



Typical application showing the Knox padlock daisy chained with the property owner's padlock allowing entry by either party.

Knox® Rapid Entry System

The Knox Company manufactures a complete line of high security products including KnoxBox key boxes, key vaults, cabinets, key switches, padlocks, locking FDC caps, plugs and electronic master key security systems. For more information or technical assistance, please call Customer Service at 1-800-552-5669.



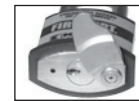
Shrouded Exterior Use
Model 3772



3772 Lock Cover Detail



Exterior Use
Model 3770



3770 Lock Cover Detail

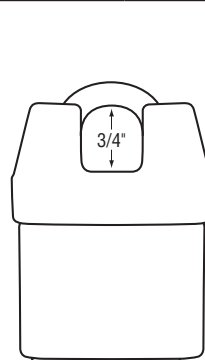


Interior Use
Model 3771

Ordering Specifications

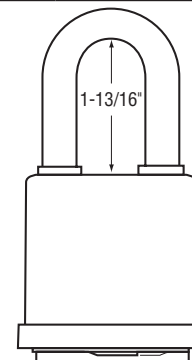
To ensure procurement and delivery of the Knox® Exterior and Interior Padlocks, it is suggested that the following specification paragraph be used:

	SHROUDED EXTERIOR Model 3772	EXTERIOR Model 3770	INTERIOR Model 3771
Padlock:	Heavy-duty UL Listed cylinder.	Heavy-duty UL Listed cylinder.	Heavy-duty UL Listed cylinder.
Lock:	Double-action rotating tumblers and hardened steel pins accessed by a biased cut key.	Double-action rotating tumblers and hardened steel pins accessed by a biased cut key.	Double-action rotating tumblers and hardened steel pins accessed by a biased cut key.
Finish:	Solid brass body and cylinder with EPDM rubber seal and body cover, stainless steel shackle.	Solid brass body and cylinder with brass lock cover, EPDM body cover and stainless steel shackle.	Hardened steel body and shackle with a brass cylinder.
P/N:	Knox Padlock 3772	Knox Padlock 3770	Knox Padlock 3771
Mfr's Name:	KNOX COMPANY	KNOX COMPANY	KNOX COMPANY



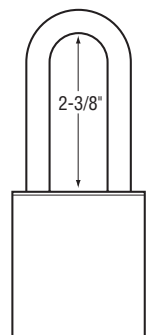
Model 3772

3-3/4"H x 2-3/8"W x 1-3/8"D
7/16" diameter shackle



Model 3770

4-7/8"H x 2-1/2"W x 1-7/16"D
7/16" diameter shackle



Model 3771

5"H x 2-1/16"W x 1-3/16"D
5/16" diameter shackle