

KINGS POINT

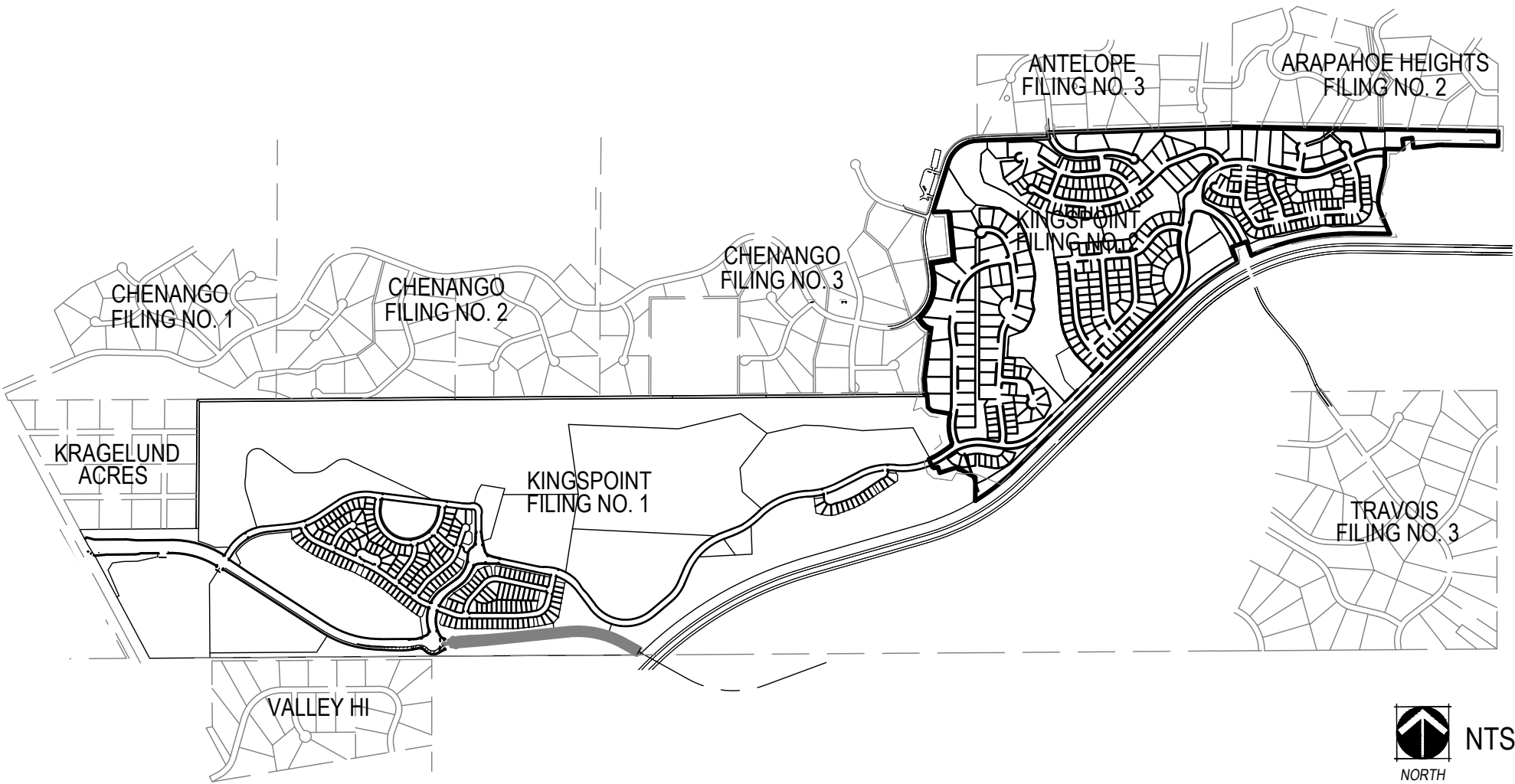
FILING 1 & 2 TREE PROTECTION PLAN

AURORA, COLORADO

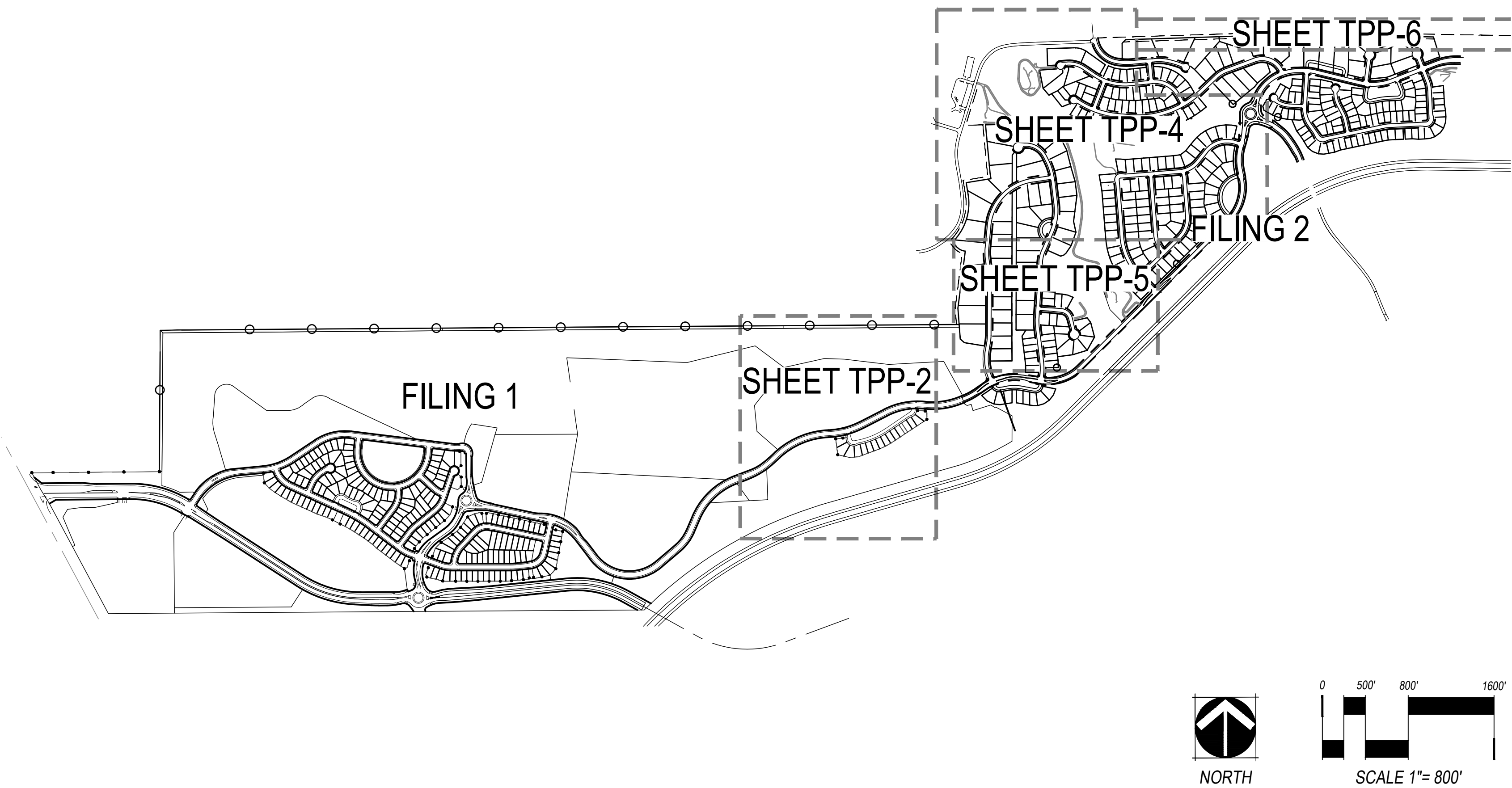
SHEET INDEX

TPP-1	COVER
TPP-2	FILING 1 TREE PROTECTION PLAN
TPP-3	FILING 1 TREE MITIGATION/ PROTECTION CHARTS
TPP-4	FILING 2 TREE PROTECTION PLAN
TPP-5	FILING 2 TREE PROTECTION PLAN
TPP-6	FILING 2 TREE PROTECTION PLAN
TPP-7	FILING 2 TREE MITIGATION/ PROTECTION CHARTS
TPP-8	FILING 2 TREE MITIGATION/ PROTECTION CHARTS
TPP-9	TREE PROTECTION DETAILS

VICINITY MAP



SHEET KEY MAP



CITY OF AURORA APPROVALS

THIS TREE PROTECTION PLAN IS APPROVED IN ACCORDANCE WITH THE CITY OF AURORA BLACK FOREST ORDINANCE.

FORESTRY DIVISION: _____ DATE: _____

RECORDER'S CERTIFICATE:
Accepted for filing in the office of the Clerk and Recorder of _____, COLORADO AT _____
O'CLOCK _____ M,
THIS _____ DAY OF _____, AD, _____.

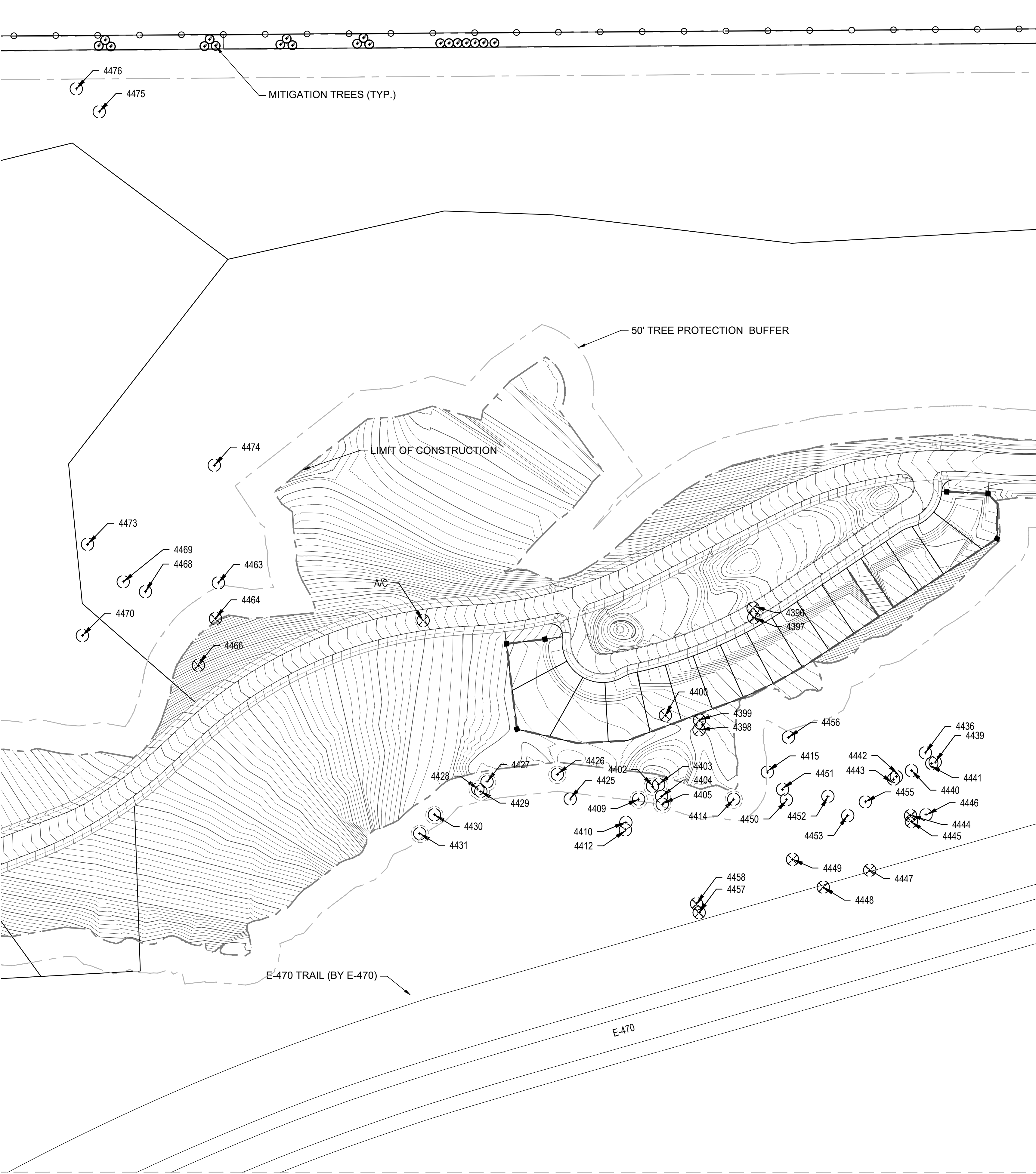
CLERK AND RECORDER: _____
DEPUTY: _____

REFER TO SHEET TPP 3 & 6 FOR SUMMARY TABLES AND OVERALL TREE PROTECTION PLAN SUMMARY.

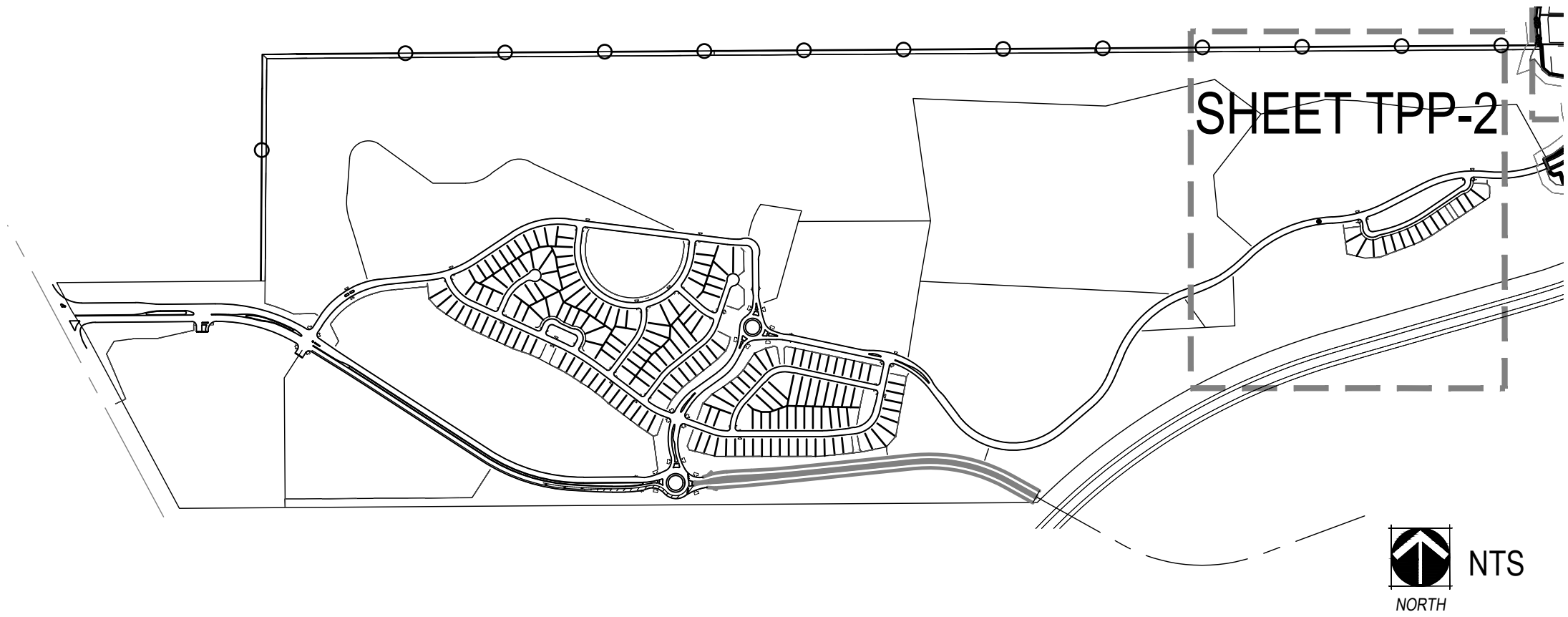
NOTES

1. TREE INVENTORY REFLECTED IN THIS PLAN SET WAS UPDATED BY KEITH WORLEY, FORESTER ON MARCH 25, 2018. ORIGINAL INVENTORY BY STEVE DAY ON MAY 4, 2015.

TREE MITIGATION PLAN - FILING 1



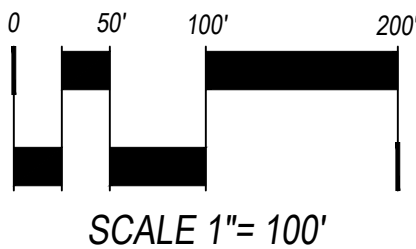
KEY MAP - FILING 1



LEGEND

- EXISTING TREES TO BE PROTECTED DURING CONSTRUCTION
- EXISTING TREES TO BE REMOVED
- MITIGATION TREES
- LIMIT OF CONSTRUCTION
- 50' TREE PROTECTION BUFFER
- TREE PROTECTION FENCE

NOTE:
-REFER TO SHEET TPP-3 FOR TREE INVENTORY CHARTS.
-E-470 TRAIL ALIGNMENT IS CONCEPTUAL. FINAL TRAIL LOCATION, CONSTRUCTION AND MAINTENANCE BY OTHERS. FUTURE TREE EVALUATION, PRESERVATION AND/OR MITIGATION OF ANY BLACK FOREST TREES AFFECTED BY THE FINAL TRAIL ALIGNMENT OR GRADING TO BE THE RESPONSIBILITY OF E-470



CHECKED BY:
DRAWN BY:

JNLV
TD/AB

NOT FOR CONSTRUCTION

EXISTING TREE INVENTORY - FILING 1

TREE #	SPECIES	DBH	SPEC %	LOC. %	COND % 2018	MITIGATION Inches 2018	\$ VALUE 2018	COMMENTS	Action
4396	Ponderosa Pine	18	0.8	0.7	0.4	7.2	\$ 2,315		Remove
4397	Ponderosa Pine	20	0.8	0.7	0.1	2.0	\$ 709		Remove
4398	Ponderosa Pine	18	0.8	0.7	0.6	10.8	\$ 3,472		Remove
4399	Ponderosa Pine	18	0.8	0.7	0.6	10.8	\$ 3,472		Remove
4400A	Ponderosa Pine	19	0.8	0.7	0.6	11.4	\$ 3,853		Remove
4400B	Ponderosa Pine	11	0.8	0.7	0.6	6.6	\$ 1,383		Remove
4402	Ponderosa Pine	22	0.8	0.7	0.05	1.1	\$ 427		Preserve
4403	Ponderosa Pine	0	0.8	0.7	0	0.0	\$ -	Dead	Dead/Preserve
4404	Ponderosa Pine	14	0.8	0.7	0.6	8.4	\$ 2,155		Preserve
4405	Ponderosa Pine	15	0.8	0.7	0	0.0	\$ -	Still dead	Dead/Preserve
4409	Ponderosa Pine	22	0.8	0.7	0.6	13.2	\$ 5,119		Preserve
4410	Ponderosa Pine	17	0.8	0.7	0.45	7.7	\$ 2,334		Preserve
4412	Ponderosa Pine	19	0.8	0.7	0.6	11.4	\$ 3,853		Preserve
4414	Ponderosa Pine	23	0.8	0.7	0.6	13.8	\$ 5,582		Preserve
4415	Ponderosa Pine	27	0.8	0.7	0.6	16.2	\$ 7,640		Preserve
4425	Ponderosa Pine	18	0.8	0.7	0.6	10.8	\$ 3,472		Preserve
4426	Ponderosa Pine	17	0.8	0.7	0.6	10.2	\$ 3,112		Preserve
4427	Ponderosa Pine	22	0.8	0.7	0.6	13.2	\$ 5,119		Preserve
4428	Ponderosa Pine	21	0.8	0.7	0.6	12.6	\$ 4,676		Preserve
4429	Ponderosa Pine	15	0.8	0.7	0.35	5.3	\$ 1,431		Preserve
4430	Ponderosa Pine	10	0.8	0.7	0.55	5.5	\$ 1,069		Preserve
4431	Ponderosa Pine	11	0.8	0.7	0.7	7.7	\$ 1,613		Preserve
4436	Ponderosa Pine	7	0.8	0.7	0.7	4.9	\$ 749		Preserve
4439	Ponderosa Pine	8	0.8	0.7	0.7	5.6	\$ 929		Preserve
4440	Ponderosa Pine	21	0.8	0.7	0.6	12.6	\$ 4,676		Preserve
4441	Ponderosa Pine	0	0.8	0.7	0	0.0	\$ -	Dead	Dead/Preserve
4442	Ponderosa Pine	0	0.8	0.7	0	0.0	\$ -	Dead	Dead/Preserve
4443	Ponderosa Pine	5	0.8	0.7	0.6	3.0	\$ 395		Preserve
4444	Ponderosa Pine	0	0.8	0.7	0	0.0	\$ -	Gone	N/A
4445	Ponderosa Pine	0	0.8	0.7	0	0.0	\$ -	Gone	N/A
4446	Ponderosa Pine	18	0.8	0.7	0.2	3.6	\$ 1,157	Fill against trunk	Preserve
4447	Ponderosa Pine	0	0.8	0.7	0	0.0	\$ -	Gone	N/A
4448 *	Ponderosa Pine	0	0.8	0.7	0	0.0	\$ -	Gone	N/A
4449	Ponderosa Pine	0	0.8	0.7	0	0.0	\$ -	Gone	N/A
4450	Ponderosa Pine	24	0.8	0.7	0.45	10.8	\$ 4,549		Preserve
4451	Ponderosa Pine	25	0.8	0.7	0.6	15.0	\$ 6,570		Preserve
4452	Ponderosa Pine	13	0.8	0.7	0.7	9.1	\$ 2,190		Preserve
4453	Ponderosa Pine	14	0.8	0.7	0.7	9.8	\$ 2,514		Preserve
4455A	Ponderosa Pine	22	0.8	0.7	0.6	13.2	\$ 5,119		Preserve
4455B	Ponderosa Pine	17	0.8	0.7		0.0	\$ -	Gone	N/A
4456	Ponderosa Pine	25	0.8	0.7	0.6	15.0	\$ 6,570		Preserve
4457	Ponderosa Pine	0	0.8	0.7	0	0.0	\$ -	Gone	N/A
4458	Ponderosa Pine	0	0.8	0.7	0	0.0	\$ -	Gone	N/A
4463	Ponderosa Pine	15	0.8	0.7	0.35	5.3	\$ 1,431		Preserve
4464	Ponderosa Pine	0	0.8	0.7	0	0.0	\$ -	Still dead	Dead/Remove
4466A	Ponderosa Pine	15	0.8	0.7	6	9.0	\$ 24,532		Remove
4466B	Ponderosa Pine	10	0.8	0.7	0.6	6.0	\$ 1,167		Remove
4468	Ponderosa Pine	20	0.8	0.7	0.4	8.0	\$ 2,836		Preserve
4469	Ponderosa Pine	24	0.8	0.7	0.55	13.2	\$ 5,560		Preserve
4470	Ponderosa Pine	11	0.8	0.7	0.6	6.6	\$ 1,383		Preserve
4473	Ponderosa Pine	17	0.8	0.7	0.6	10.2	\$ 3,112		Preserve
4474	Ponderosa Pine	11	0.8	0.7	0.6	6.6	\$ 1,383		Preserve
4475	Ponderosa Pine	21	0.8	0.7	0.6	12.6	\$ 4,676		Preserve
4476	Ponderosa Pine	19	0.8	0.7	0.6	11.4	\$ 3,853		Preserve
A, C	BW	7	0.65	0.7	0.2	9.8	\$ 1,317	7 stems	Remove

* - on CDOT property

BLACK FOREST - 50' BUFFER CHART - FILING 1

TREES WITHIN 50' OF LIMITS OF CONSTRUCTION

TREE #	SPECIES	DBH	SPEC %	LOC. %	COND % 2018	MITIGATION Inches 2018	\$ VALUE 2018	COMMENTS	Action
4402	Ponderosa Pine	22	0.8	0.7	0.05	1.1	\$ 427		Preserve
4403	Ponderosa Pine	0	0.8	0.7	0	0.0	\$ -	Dead	Dead/Preserve
4404	Ponderosa Pine	14	0.8	0.7	0.6	8.4	\$ 2,155		Preserve
4405	Ponderosa Pine	15	0.8	0.7	0	0.0	\$ -	Still dead	Dead/Preserve
4409	Ponderosa Pine	22	0.8	0.7	0.6	13.2	\$ 5,119		Preserve
4414	Ponderosa Pine	23	0.8	0.7	0.6	13.8	\$ 5,582		Preserve
4415	Ponderosa Pine	27	0.8	0.7	0.6	16.2	\$ 7,640		Preserve
4426	Ponderosa Pine	17	0.8	0.7	0.6	10.2	\$ 3,112		Preserve
4427	Ponderosa Pine	22	0.8	0.7	0.6	13.2	\$ 5,119		Preserve
4428	Ponderosa Pine	21	0.8	0.7	0.6	12.6	\$ 4,676		Preserve
4429	Ponderosa Pine	15	0.8	0.7	0.35	5.3	\$ 1,431		Preserve
4430	Ponderosa Pine	10	0.8	0.7	0.55	5.5	\$ 1,069		Preserve
4431	Ponderosa Pine	11	0.8	0.7	0.7	7.7	\$ 1,613		Preserve
						107.2	\$ 37,943		

BLACK FOREST - TREE MITIGATION SUMMARY - FILING 1

	PRESERVED TREES	ESCROW TREES	REMOVED AND REQ. MITIGATED TREES	RELOCATED TREES	MITIGATION TREES PROVIDED				
TOTAL TREES				TREES RELOCATED	HEIGHT	QTY	INCHES		
41	33 TREES	5 TREES	8 TREES	0	8' HT. PONDEROSA PINES	16 TREES	64"		
	80%	\$ 14,239	20%	0%					
			MITIGATION INCHES						
			64"						

NOTE:

NOTE:
1. REPLACEMENT TREES ARE TO BE MINIMUM 8' TALL PONDEROSA PINES BASED ON THE MITIGATION RATIO OF 1" DBH = 2' HEIGHT.
2. TOTAL TREES ABOVE EXCLUDES DEAD OR MISSING TREES.

BLACK FOREST - TREE PRESERVATION DATA - FILING 1

TREE #	SPECIES	DBH	SPEC %	LOC. %	COND % 2018	MITIGATION Inches 2018	\$ VALUE 2018	COMMENTS	Action
4402	Ponderosa Pine	22	0.8	0.7	0.05	1.1	\$ 427		Preserve
4403	Ponderosa Pine	0	0.8	0.7	0	0.0	\$ -	Dead	Dead/Preserve
4404	Ponderosa Pine	14	0.8	0.7	0.6	8.4	\$ 2,155		Preserve
4405	Ponderosa Pine	15	0.8	0.7	0	0.0	\$ -	Still dead	Dead/Preserve
4409	Ponderosa Pine	22	0.8	0.7	0.6	13.2	\$ 5,119		Preserve
4410	Ponderosa Pine	17	0.8	0.7	0.45	7.7	\$ 2,334		Preserve
4412	Ponderosa Pine	19	0.8	0.7	0.6	11.4	\$ 3,853		Preserve
4414	Ponderosa Pine	23	0.8	0.7	0.6	13.8	\$ 5,582		Preserve
4415	Ponderosa Pine	27	0.8	0.7	0.6	16.2	\$ 7,640		Preserve
4425	Ponderosa Pine	18	0.8	0.7	0.6	10.8	\$ 3,472		Preserve
4426	Ponderosa Pine	17	0.8	0.7	0.6	10.2	\$ 3,112		Preserve
4427	Ponderosa Pine	22	0.8	0.7	0.6	13.2	\$ 5,119		Preserve
4428	Ponderosa Pine	21	0.8	0.7	0.6	12.6	\$ 4,676		Preserve
4429	Ponderosa Pine	15	0.8	0.7	0.35	5.3	\$ 1,431		Preserve
4430	Ponderosa Pine	10	0.8	0.7	0.55	5.5	\$ 1,069		Preserve
4431	Ponderosa Pine	11	0.8	0.7	0.7	7.7	\$ 1,613		Preserve
4436	Ponderosa Pine	7	0.8	0.7	0.7	4.9	\$ 749		Preserve
4439	Ponderosa Pine	8	0.8	0.7	0.7	5.6	\$ 929		Preserve
4440	Ponderosa Pine	21	0.8	0.7	0.6	12.6	\$ 4,676		Preserve
4441	Ponderosa Pine	0	0.8	0.7	0	0.0	\$ -	Dead	Dead/Preserve
4442	Ponderosa Pine	0	0.8	0.7	0	0.0	\$ -	Dead	Dead/Preserve
4443	Ponderosa Pine	5	0.8	0.7	0.6	3.0	\$ 395		Preserve
4446	Ponderosa Pine	18	0.8	0.7	0.2	3.6	\$ 1,157	Fill against trunk	Preserve
4450	Ponderosa Pine	24	0.8	0.7	0.45	10.8	\$ 4,549		Preserve
4451	Ponderosa Pine	25	0.8	0.7	0.6	15.0	\$ 6,570		Preserve
4452	Ponderosa Pine	13	0.8	0.7	0.7	9.1	\$ 2,190		Preserve
4453	Ponderosa Pine	14	0.8	0.7	0.7	9.8	\$ 2,514		Preserve
4455A	Ponderosa Pine	22	0.8	0.7	0.6	13.2	\$ 5,119		Preserve
4456	Ponderosa Pine	25	0.8	0.7	0.6	15.0	\$ 6,570		Preserve
4463	Ponderosa Pine	15	0.8	0.7	0.35	5.3	\$ 1,431		Preserve
4468	Ponderosa Pine	20	0.8	0.7	0.4	8.0	\$ 2,836		Preserve
4469	Ponderosa Pine	24	0.8	0.7	0.55	13.2	\$ 5,560		Preserve
4470	Ponderosa Pine	11	0.8	0.7	0.6	6.6	\$ 1,383		Preserve
4473	Ponderosa Pine	17	0.8	0.7	0.6	10.2	\$ 3,112		Preserve
4474	Ponderosa Pine	11	0.8	0.7	0.6	6.6	\$ 1,383		Preserve
4475	Ponderosa Pine	21	0.8	0.7	0.6	12.6	\$ 4,676		Preserve
4476	Ponderosa Pine	19	0.8	0.7	0.6	11.4	\$ 3,853		Preserve
							\$ 107,253		

BLACK FOREST - TREE REMOVAL / MITIGATION SUMMARY - FILING 1

TREE #	SPECIES	DBH	SPEC %	LOC. %	COND % 2018	MITIGATION Inches 2018	\$ VALUE 2018	COMMENTS	Action
4396	Ponderosa Pine	18	0.8	0.7	0.4	7.2	\$ 2,315		Remove
4397	Ponderosa Pine	20	0.8	0.7	0.1	2.0	\$ 709		Remove
4398	Ponderosa Pine	18	0.8	0.7	0.6	10.8	\$ 3,472		Remove
4399	Ponderosa Pine	18	0.8	0.7	0.6	10.8	\$ 3,472		Remove
4400A	Ponderosa Pine	19	0.8	0.7	0.6	11.4	\$ 3,853		Remove
4400B	Ponderosa Pine	11	0.8	0.7	0.6	6.6	\$ 1,383		Remove
4464	Ponderosa Pine	0	0.8	0.7	0	0.0	\$ -	Still dead	Dead/Remove
4466A	Ponderosa Pine	15	0.8	0.7	6	9.0	\$ 24,532		Remove
4466B	Ponderosa Pine	10	0.8	0.7	0.6	6.0	\$ 1,167		Remove
						63.8	\$ 40,902		

BLACK FOREST - ESCROW TREES

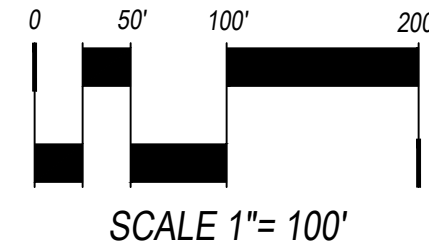
TREE #	SPECIES	DBH	SPEC %	LOC. %	COND % 2018	MITIGATION Inches 2018	\$ VALUE 2018	COMMENTS	Action
4402	Ponderosa Pine	22	0.8	0.7	0.05	1.1	\$ 427		Preserve
4403	Ponderosa Pine	0	0.8	0.7	0	0.0	\$ -	Dead	Dead/Preserve
4414	Ponderosa Pine	23	0.8	0.7	0.6	13.8	\$ 5,582		Preserve
4426	Ponderosa Pine	17	0.8	0.7	0.6	10.2	\$ 3,112		Preserve
4427	Ponderosa Pine	22	0.8	0.7	0.6	13.2	\$ 5,119		Preserve
							\$ 14,239		

NON-BLACK FOREST - TREE REMOVAL / MITIGATION SUMMARY - FILING 1

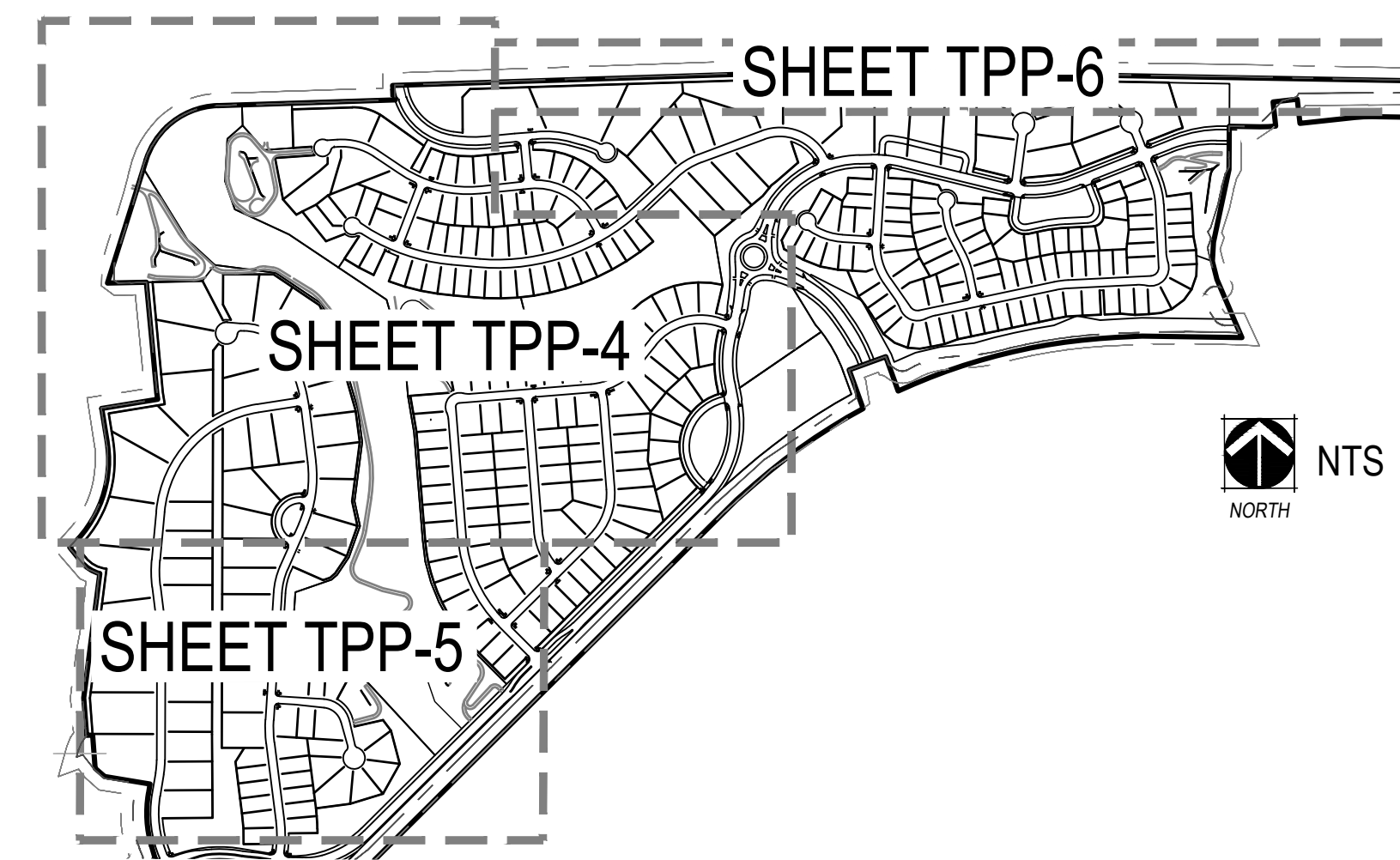
TREE #	SPECIES	DBH	SPEC %	LOC. %	COND % 2018	MITIGATION Inches 2018	\$ VALUE 2018	COMMENTS	Action
A, C	BW	7	0.65	0.7	0.2	9.8	\$ 1,317	7 stems	Remove

NON-BLACK FOREST - TREE MITIGATION SUMMARY - FILING 1

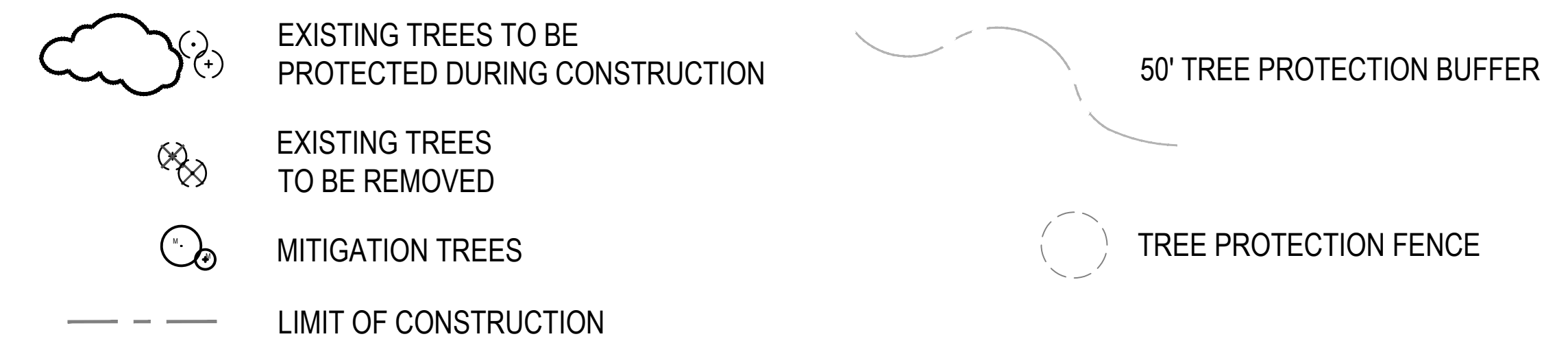
	PRESERVED TREES	REMOVED AND REQ. MITIGATED TREES	RELOCATED TREES	MITIGATION TREES PROVIDED		
TOTAL TREES			TREES RELOCATED	HEIGHT	QTY	INCHES
1	0 TREES	1 TREE	0	8' HT. PONDEROSA PINES	3 TREES	12"
	0%	100%	0%			
		MITIGATION INCHES 9.8"				
NOTE:						



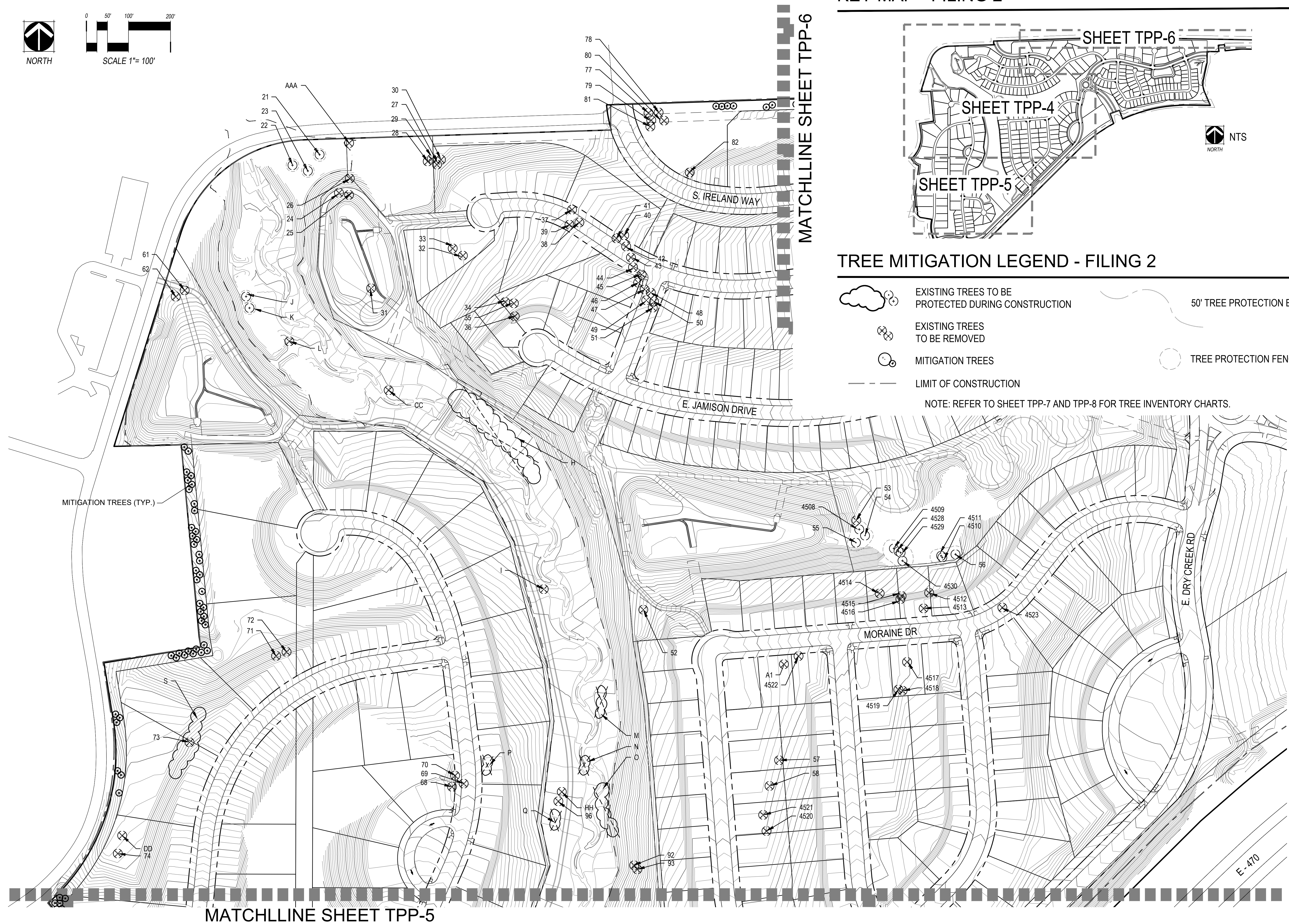
KEY MAP - FILING 2



TREE MITIGATION LEGEND - FILING 2



NOTE: REFER TO SHEET TPP-7 AND TPP-8 FOR TREE INVENTORY CHARTS.



MATCHLINE SHEET TPP-5

MATCHLINE SHEET TPP-6

SHEET TPP-6

751 SHEET TPP-4

SHEET TPP-5

NTS

NORTH

MITIGATION TREES (TYP.) —

MORaine DR

E. DRY CREEK RD

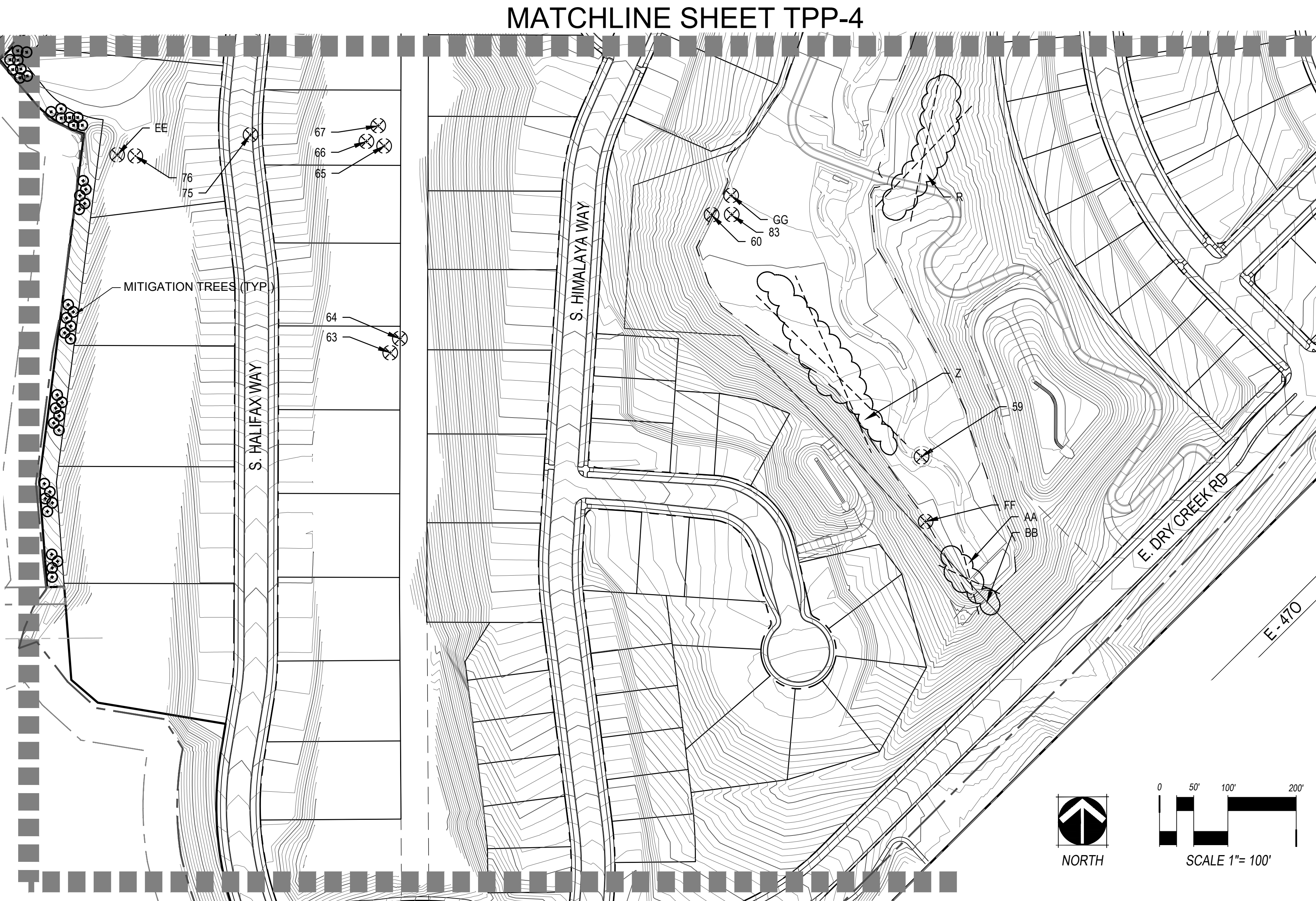
E-470

SHEET TITLE:

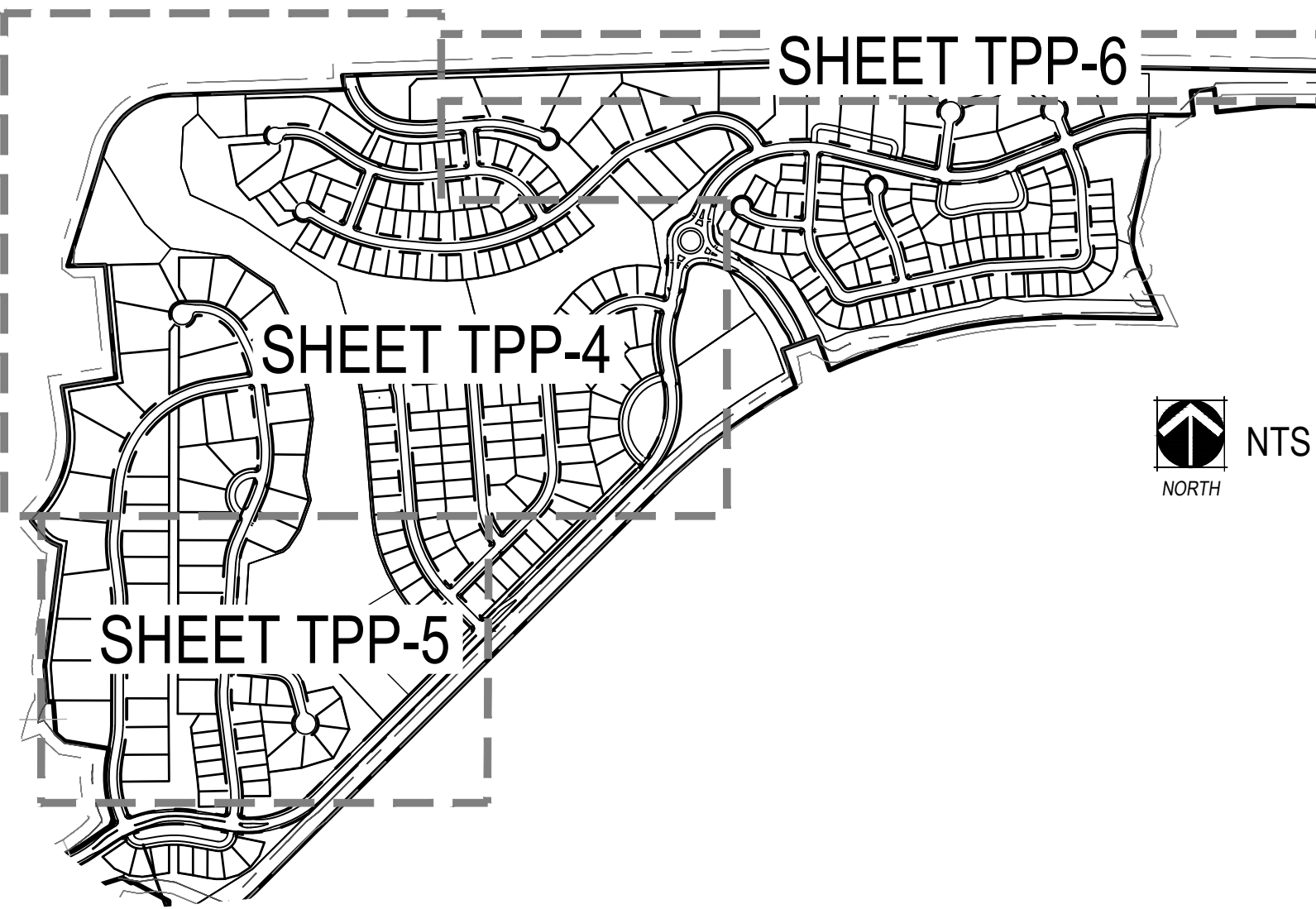
FILING 2-TREE
PROTECTION PLA

TPP-4

TREE MITIGATION PLAN - FILING 2



KEY MAP - FILING 2



TREE MITIGATION LEGEND - FILING 2

- EXISTING TREES INVENTORIED/
TO BE PROTECTED DURING CONSTRUCTION
- EXISTING EVERGREEN TREES
TO BE REMOVED
- MITIGATION TREES
- LIMIT OF WORK
- 50' TREE PROTECTION BUFFER
- TREE PROTECTION FENCE

NOTE: REFER TO SHEET TPP-7 AND TPP-8 FOR TREE INVENTORY CHARTS.

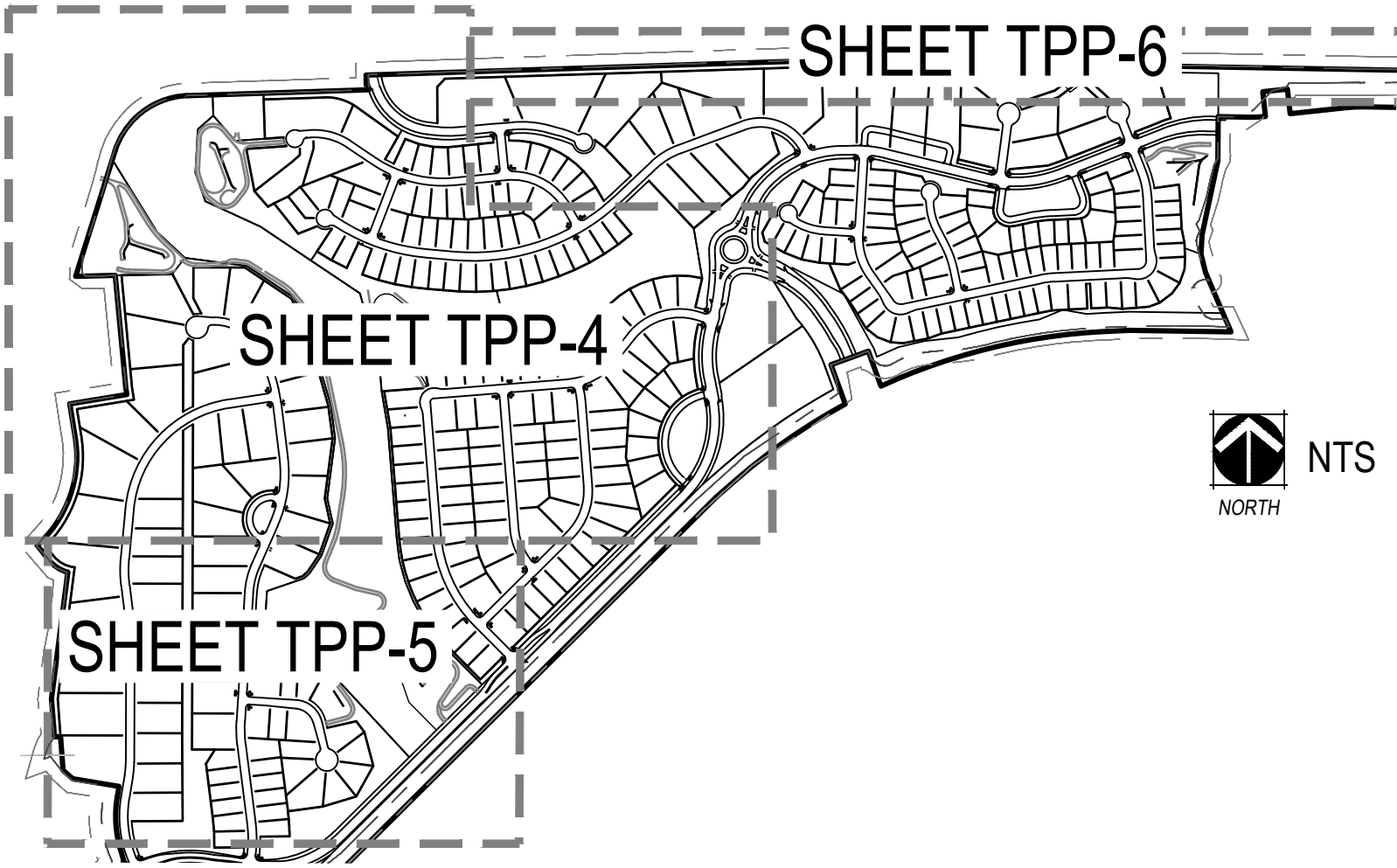
MATCHLINE SHEET TPP-4

MATCHLINE SHEET TPP-6A

MATCHLINE SHEET TPP-6A

MITIGATION TREES (TYP.)

KEY MAP - FILING 2



TREE MITIGATION LEGEND - FILING 2

- EXISTING TREES TO BE PROTECTED DURING CONSTRUCTION
- EXISTING TREES TO BE REMOVED
- MITIGATION TREES
- LIMIT OF CONSTRUCTION
- 50' TREE PROTECTION BUFFER
- TREE PROTECTION FENCE

NOTE: REFER TO SHEET TPP-7 AND TPP-8 FOR TREE INVENTORY CHARTS.



Know what's below.
Call before you dig.

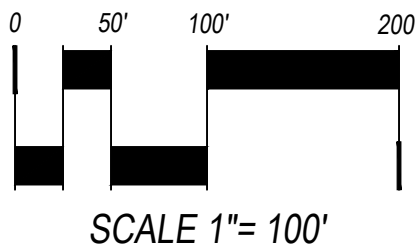
DATE:

9-16-16
3-16-17
4-27-17
6-09-17
5-11-18
6-15-18
7-06-18
9-07-18

SHEET TITLE:

FILING 2-TREE
PROTECTION PLAN

TPP-6



BLACK FOREST - TREE INVENTORY - FILING 2

TREE #	SPECIES	DBH	SPEC %	LOC. %	COND % 2018	MITIGATION Inches 2018	\$ VALUE 2018	COMMENTS	Action
4508A	Ponderosa pine	7	0.8	0.7	0.8	5.6	\$ 856		Preserve
4508B	Ponderosa pine	6	0.8	0.7	0.8	4.8	\$ 677		Preserve
4509A	Ponderosa pine	8	0.8	0.7	0.8	6.4	\$ 1,062		Preserve
4509B	Ponderosa pine	6	0.8	0.7	0.8	4.8	\$ 677		Preserve
4510	Ponderosa pine	14	0.8	0.7	0.6	8.4	\$ 2,155		Preserve
4511	Ponderosa pine	14	0.8	0.7	0.6	8.4	\$ 2,155		Preserve
4512	Ponderosa pine	22	0.8	0.7	0.6	13.2	\$ 5,119		Remove
4513	Ponderosa pine	15	0.8	0.7	0	0.0	\$ -	Dead	NA
4514	Ponderosa pine	24	0.8	0.7	0	0.0	\$ -	Dead	NA
4515	Ponderosa pine	3	0.8	0.7	0.8	2.4	\$ 307		Remove
4516	Ponderosa pine	26	0.8	0.7	0.6	15.6	\$ 7,095		Remove
4517	Ponderosa pine	23	0.8	0.7	0.6	13.8	\$ 5,582		Remove
4518A	Ponderosa pine	11	0.8	0.7	0.6	6.6	\$ 1,383		Remove
4518B	Ponderosa pine	7	0.8	0.7	0.8	5.6	\$ 856		Remove
4520	Ponderosa pine	18	0.8	0.7	0.6	10.8	\$ 3,472		Remove
4521	Ponderosa pine	15	0.8	0.7	0.6	9.0	\$ 2,453		Remove
4522	Ponderosa pine	26	0.8	0.7	0.6	15.6	\$ 7,095		Remove
4523A	Ponderosa pine	14	0.8	0.7	0.6	8.4	\$ 2,155		Remove
4523B	Ponderosa pine	14	0.8	0.7	0.6	8.4	\$ 2,155		Remove
4528	Ponderosa pine	5	0.8	0.7	0.8	4.0	\$ 526		Preserve
4529	Ponderosa pine	5	0.8	0.7	0.8	4.0	\$ 526		Preserve
4530	Ponderosa pine	3	0.8	0.7	0.8	2.4	\$ 307		Preserve
56	Ponderosa pine	4	0.8	0.7	0.8	3.2	\$ 403		Preserve
A1	Ponderosa pine	4	0.8	0.7	0.8	3.2	\$ 403		Remove

BLACK FOREST - TREE REMOVAL / MITIGATION SUMMARY - FILING 2

TREE #	SPECIES	DBH	SPEC %	LOC. %	COND % 2018	MITIGATION Inches 2018	\$ VALUE 2018	COMMENTS	Action
4512	Ponderosa pine	22	0.8	0.7	0.6	13.2	\$ 5,119		Remove
4515	Ponderosa pine	3	0.8	0.7	0.8	2.4	\$ 307		Remove
4516	Ponderosa pine	26	0.8	0.7	0.6	15.6	\$ 7,095		Remove
4517	Ponderosa pine	23	0.8	0.7	0.6	13.8	\$ 5,582		Remove
4518A	Ponderosa pine	11	0.8	0.7	0.6	6.6	\$ 1,383		Remove
4518B	Ponderosa pine	7	0.8	0.7	0.8	5.6	\$ 856		Remove
4520	Ponderosa pine	18	0.8	0.7	0.6	10.8	\$ 3,472		Remove
4521	Ponderosa pine	15	0.8	0.7	0.6	9.0	\$ 2,453		Remove
4522	Ponderosa pine	26	0.8	0.7	0.6	15.6	\$ 7,095		Remove
4523A	Ponderosa pine	14	0.8	0.7	0.6	8.4	\$ 2,155		Remove
4523B	Ponderosa pine	14	0.8	0.7	0.6	8.4	\$ 2,155		Remove
A1	Ponderosa pine	4	0.8	0.7	0.8	3.2	\$ 403		Remove
							112.6	\$ 38,073	

BLACK FOREST - 50' BUFFER CHART - FILING 2

NO TREES ARE LOCATED WITHIN 50' OUTSIDE OF CONSTRUCTION LIMITS FOR FILING 2.

BLACK FOREST - ESCROW TREES - FILING 2

TREES TO BE PRESERVED WITHIN THE LIMITS OF CONSTRUCTION

TREE #	SPECIES	DBH	SPEC %	LOC. %	COND % 2018	MITIGATION Inches 2018	\$ VALUE 2018	COMMENTS	Action
4508A	Ponderosa pine	7	0.8	0.7	0.8	5.6	\$ 856		Preserve
4508B	Ponderosa pine	6	0.8	0.7	0.8	4.8	\$ 677		Preserve
4509A	Ponderosa pine	8	0.8	0.7	0.8	6.4	\$ 1,062		Preserve
4509B	Ponderosa pine	6	0.8	0.7	0.8	4.8	\$ 677		Preserve
4510	Ponderosa pine	14	0.8	0.7	0.6	8.4	\$ 2,155		Preserve
4511	Ponderosa pine	14	0.8	0.7	0.6	8.4	\$ 2,155		Preserve
4528	Ponderosa pine	5	0.8	0.7	0.8	4.0	\$ 526		Preserve
4529	Ponderosa pine	5	0.8	0.7	0.8	4.0	\$ 526		Preserve
4530	Ponderosa pine	3	0.8	0.7	0.8	2.4	\$ 307		Preserve
56	Ponderosa pine	4	0.8	0.7	0.8	3.2	\$ 403		Preserve
							52.0	\$ 9,344	

NON-BLACK FOREST - TREE INVENTORY- FILING 2

TREE #	SPECIES	DBH	SPEC %	LOC. %	COND % 2018	MITIGATION Inches 2018	\$ VALUE 2018	COMMENTS	Action
21	Pinon Pine	8	0.8	0.7	0.55	4.4	\$ 730		Preserve
22	Pinon Pine	7	0.8	0.7	0.4	2.8	\$ 428		Preserve
23A	Pinon Pine	6	0.8	0.7	0.6	3.6	\$ 508		Preserve
23B	Pinon Pine	5	0.8	0.7	0.6	3.0	\$ 395		Preserve
24	Pinon Pine	8	0.8	0.7	0.55	4.4	\$ 730		Remove
25A	Pinon Pine	6	0.8	0.7	0.7	4.2	\$ 593		Remove
25B	Pinon Pine	5	0.8	0.7	0.7	3.5	\$ 461		Remove
26	Pinon Pine	5	0.8	0.7	0.8	4.0	\$ 526		Remove
27	Pinon Pine	5	0.8	0.7	0.4	2.0	\$ 263		Remove
28	Pinon Pine	6	0.8	0.7	0.75	4.5	\$ 635		Remove
29A	Pinon Pine	5	0.8	0.7	0.8	4.0	\$ 526		Remove
29B	Pinon Pine	4	0.8	0.7	0.8	3.2	\$ 403		Remove
30A	Pinon Pine	4	0.8	0.7	0.65	2.6	\$ 327		Remove
30B	Pinon Pine	4	0.8	0.7	0.65	2.6	\$ 327		Remove
30C	Pinon Pine	3	0.8	0.7	0.65	2.0	\$ 249		Remove
31A	Siberian Elm	18	0.6	0.7	0	0.0	\$ -	90% dead	Remove
31B	Siberian Elm	10	0.6	0.7	0.1	1.0	\$ 155		Remove
31C	Siberian Elm	10	0.6	0.7	0.1	1.0	\$ 155		Remove
31D	Siberian Elm	9	0.6	0.7	0.1	0.9	\$ 131		Remove
31E	Siberian Elm	9	0.6	0.7	0.1	0.9	\$ 131		Remove
31F	Siberian Elm	6	0.6	0.7	0.1	0.6	\$ 73		Remove
32	Pinon Pine	7	0.8	0.7	0.55	3.9	\$ 588		Remove
33	Pinon Pine	6	0.8	0.7	0.55	3.3	\$ 466		Remove
34	Pinon Pine	7	0.8	0.7	0.7	4.9	\$ 749		Remove
35	Pinon Pine	8	0.8	0.7	0.55	4.4	\$ 730		Remove
36	Pinon Pine	8	0.8	0.7	0.7	5.6	\$ 929		Remove
37	Pinon Pine	6	0.8	0.7	0.7	4.2	\$ 593		Remove
38	Pinon Pine	8	0.8	0.7	0.55	4.4	\$ 730		Remove
39A	Pinon Pine	6	0.8	0.7	0.45	2.7	\$ 381		Remove
39B	Pinon Pine	4	0.8	0.7	0.45	1.8	\$ 227		Remove
40	Plains Cottonwood	0	0.65	0.7	0	0.0	\$ -	dead	Remove/Dead
41	Plains Cottonwood	0	0.65	0.7	0	0.0	\$ -	dead	Remove/Dead
42	Plains Cottonwood	9	0.65	0.7	0.1	0.9	\$ 139	Drought stressed	Remove
43	Plains Cottonwood	0	0.65	0.7	0	0.0	\$ -	dead	Remove/Dead
44	Plains Cottonwood	0	0.65	0.7	0	0.0	\$ -	dead	Remove/Dead
45	Plains Cottonwood	9	0.65	0.7	0.1	0.9	\$ 139	Drought stressed	Remove
46	Plains Cottonwood	0	0.65	0.7	0	0.0	\$ -	dead	Remove/Dead
47	Plains Cottonwood	9	0.65	0.7	0.2	1.8	\$ 277	Drought stressed	Remove
48	Plains Cottonwood	0	0.65	0.7	0	0.0	\$ -	dead	Remove/Dead
49	Plains Cottonwood	7	0.65	0.7	0.2	1.4	\$ 188	Drought stressed	Remove
50	Plains Cottonwood	0	0.65	0.7	0	0.0	\$ -	dead	Remove/Dead
51	Plains Cottonwood	9	0.65	0.7	0.2	1.8	\$ 277	Drought stressed	Remove
52	Plains Cottonwood	33	0.65	0.7	0.1	3.3	\$ 1,544		Remove
53	Plains Cottonwood	0	0.65	0.7	0	0.0	\$ -	still dead	Remove/Dead
54	Plains Cottonwood	23	0.65	0.7	0.1	2.3	\$ 763		Preserve
55A	Plains Cottonwood	5	0.65	0.7	0.2	1.0	\$ 121		Preserve
55B	Plains Cottonwood	4	0.65	0.7	0.2	0.8	\$ 96		Preserve
57A	Plains Cottonwood	7	0.65	0.7	0.2	1.4	\$ 188		Remove
57B	Plains Cottonwood	7	0.65	0.7	0.2	1.4	\$ 188		Remove
57C	Plains Cottonwood	5	0.65	0.7	0.2	1.0	\$ 121		Remove
57D	Plains Cottonwood	5	0.65	0.7	0.2	1.0	\$ 121		Remove
58A	Plains Cottonwood	9	0.65	0.7	0	0.0		dead	Remove/Dead
58B	Plains Cottonwood	9	0.65	0.7	0	0.0		dead	Remove/Dead
58C	Plains Cottonwood	7	0.65	0.7	0	0.0		dead	Remove/Dead
59	Plains Cottonwood	68	0.65	0.7	0.1	6.8	\$ 6,470	Hazard tree	Remove

TREE #	SPECIES	DBH	SPEC %	LOC. %	COND % 2018	MITIGATION Inches 2018	\$ VALUE 2018	COMMENTS	Action
60	Plains Cottonwood	32	0.65	0.7	0.1	3.2	\$ 1,453		Remove
61	Pinon Pine	8	0.8	0.7	0.45	3.6	\$ 597		Remove
62	Pinon Pine	5	0.8	0.7	0.6	3.0	\$ 395		Remove
63	Pinon Pine	9	0.8	0.7	0.4	3.6	\$ 647		Remove
64A	Pinon Pine	6	0.8	0.7	0.35	2.1	\$ 296		Remove
64B	Pinon Pine	5	0.8	0.7	0.35	1.8	\$ 230		Remove
64C	Pinon Pine	4	0.8	0.7	0.45	1.8	\$ 227		Remove
65	Pinon Pine	5	0.8	0.7	0.7	3.5	\$ 461		Remove
66	Pinon Pine	5	0.8	0.7	0.4	2.0	\$ 263		Remove
67	Pinon Pine	5	0.8	0.7	0.5	2.5	\$ 329		Remove
68	Pinon Pine	7	0.8	0.7	0.5	3.5	\$ 535		Remove
69	Pinon Pine	7	0.8	0.7	5	35.0	\$ 5,348		Remove
70	Pinon Pine	8	0.8	0.7	0.3	2.4	\$ 398		Remove
71	Pinon Pine	5	0.8	0.7	0.5	2.5	\$ 329		Remove
72	Pinon Pine	4	0.8	0.7	0.5	2.0	\$ 252		Remove
73	Plains Cottonwood	16	0.65	0.7	0.4	9.4	\$ 4,591	3 stems	Remove
74	Plains Cottonwood	17	0.65	0.7	0.4	47.6	\$ 12,001	7 stems	Remove
75	Pinon Pine	6	0.8	0.7	0.5	3.0	\$ 423		Remove
76	Siberian Elm	9	0.6	0.7	0.1	3.6	\$ 524	4 stems	Remove
77	Pinon Pine	0	0.8	0.7	0	0.0	\$ -	Missing	NA
78	Pinon Pine	5	0.8	0.7	0.7	3.5	\$ 461		Remove
79	Pinon Pine	5	0.8	0.7	0.7	3.5	\$ 461		Remove
80	Pinon Pine	6	0.8	0.7	0.7	4.2	\$ 593		Remove
81	Pinon Pine	5	0.8	0.7	0.7	3.5	\$ 461		Remove
82	Pinon Pine	6	0.8	0.7	0.7	4.2	\$ 593		Remove
83	American Plum	9	0.8	0.7	0.3	5.4	\$ 971	2 stems, poor cond.	Remove
92	Plains Cottonwood	7	0.65	0.7	0.8	5.6	\$ 753	good condition	Remove
93	Plains Cottonwood	5	0.65	0.7	0.8	4.0	\$ 485	good condition	Remove
96	Plains Cottonwood	14	0.65	0.7	0.6	8.4	\$ 1,794	fair condition	Remove
AAA-A	Pinon Pine	6	0.8	0.7	0.3	1.8	\$ 254		Remove
AAA-B	Pinon Pine	5	0.8	0.7	0.3	1.5	\$ 197		Remove
H	Plains Cottonwood	13	0.65	0.7	0.35	50.1	\$ 10,062	11 stems	Remove
I	Plains Cottonwood	21	0.65	0.7	0.6	12.6	\$ 3,843		Remove
J-A	Plains Cottonwood	8	0.65	0.7	0.3	2.4	\$ 345	included bark	Preserve
J-B	Plains Cottonwood	13	0.65	0.7	0.3	3.9	\$ 784	included bark	Preserve
J-C	Plains Cottonwood	16	0.65	0.7	0.3	4.8	\$ 1,148	included bark	Preserve
K-A	Plains Cottonwood	18	0.65	0.7	0.3	5.4	\$ 1,432	included bark	Preserve
K-B	Plains Cottonwood	15	0.65	0.7	0.3	4.5	\$ 1,018	included bark	Preserve
L	Black Willow	9	0.65	0.7	0.1	8.1	\$ 1,248	9 stems	Remove
M	Plains Cottonwood	12	0.65	0.7	0.1	4.8	\$ 906	severe dieback	Remove
N	Plains Cottonwood	17	0.65	0.7	0.3	20.4	\$ 5,143		Remove
O	American Plum	9	0.8	0.7	0.1	4.5	\$ 809	5 stems, severe decay	Remove
P	Plains Cottonwood	9	0.65	0.7	0.2	9.0	\$ 1,387	5 stems	Remove
Q	Plains Cottonwood	25	0.65	0.7	0.6	15.0	\$ 5,381	good condition	Remove
R	Black Willow	6	0.65	0.7	0.3	5.4	\$ 684	3 stems	Remove
S	Ccher, BW	4	0.8	0.7	0.5	16.0	\$ 2,015	8 stems	Remove
Z	Plains Cottonwood	15	0.65	0.7	0.3	135.0	\$ 30,546	Drought stressed	Remove
AA	American Plum	4	0.8	0.7	0.4	6.4	\$ 806	4 stems	Remove
BB	Plains Cottonwood	9	0.65	0.7	0.4	176.4	\$ 27,186	49 stems, fair cond.	Remove
CC	Black Willow	10	0.65	0.7	0.1	4.0	\$ 661	4 stems, poor cond.	Remove
DD	Ccher	4	0.8	0.7	0.6	2.4	\$ 302		Remove
EE	Ccher	6	0.8	0.7	0.6	3.6	\$ 508		Remove
FF	BW	5	0.65	0.7	0.2	4.0	\$ 485	4 stems	Remove
GG	Plains Cottonwood	9	0.65	0.7	0.2	16.2	\$ 2,497	9 stems, poor cond.	Remove
HH	Plains Cottonwood	13	0.65	0.7	0.6	109.2	\$ 21,953	14 stems, good cond.	Remove

CHECKED BY:
DRAWN BY:

JNLV
TD/AB

NOT FOR CONSTRUCTION

NON-BLACK FOREST TREE REMOVAL / MITIGATION SUMMARY - FILING 2

TREE #	SPECIES	DBH	SPEC %	LOC. %	COND % 2018	MITIGATION Inches 2018	\$ VALUE 2018	COMMENTS	Action
24	Pinon Pine	8	0.8	0.7	0.55	4.4	\$ 730		Remove
25A	Pinon Pine	6	0.8	0.7	0.7	4.2	\$ 593		Remove
25B	Pinon Pine	5	0.8	0.7	0.7	3.5	\$ 461		Remove
26	Pinon Pine	5	0.8	0.7	0.8	4.0	\$ 526		Remove
27	Pinon Pine	5	0.8	0.7	0.4	2.0	\$ 263		Remove
28	Pinon Pine	6	0.8	0.7	0.75	4.5	\$ 635		Remove
29A	Pinon Pine	5	0.8	0.7	0.8	4.0	\$ 526		Remove
29B	Pinon Pine	4	0.8	0.7	0.8	3.2	\$ 403		Remove
30A	Pinon Pine	4	0.8	0.7	0.65	2.6	\$ 327		Remove
30B	Pinon Pine	4	0.8	0.7	0.65	2.6	\$ 327		Remove
30C	Pinon Pine	3	0.8	0.7	0.65	2.0	\$ 249		Remove
31A	Siberian Elm	18	0.6	0.7	0	0.0	\$ -	90% dead	Remove
31B	Siberian Elm	10	0.6	0.7	0.1	1.0	\$ 155		Remove
31C	Siberian Elm	10	0.6	0.7	0.1	1.0	\$ 155		Remove
31D	Siberian Elm	9	0.6	0.7	0.1	0.9	\$ 131		Remove
31E	Siberian Elm	9	0.6	0.7	0.1	0.9	\$ 131		Remove
31F	Siberian Elm	6	0.6	0.7	0.1	0.6	\$ 73		Remove
32	Pinon Pine	7	0.8	0.7	0.55	3.9	\$ 588		Remove
33	Pinon Pine	6	0.8	0.7	0.55	3.3	\$ 466		Remove
34	Pinon Pine	7	0.8	0.7	0.7	4.9	\$ 749		Remove
35	Pinon Pine	8	0.8	0.7	0.55	4.4	\$ 730		Remove
36	Pinon Pine	8	0.8	0.7	0.7	5.6	\$ 929		Remove
37	Pinon Pine	6	0.8	0.7	0.7	4.2	\$ 593		Remove
38	Pinon Pine	8	0.8	0.7	0.55	4.4	\$ 730		Remove
39A	Pinon Pine	6	0.8	0.7	0.45	2.7	\$ 381		Remove
39B	Pinon Pine	4	0.8	0.7	0.45	1.8	\$ 227		Remove
40	Plains Cottonwood	0	0.65	0.7	0	0.0	\$ -	dead	Remove/Dead
41	Plains Cottonwood	0	0.65	0.7	0	0.0	\$ -	dead	Remove/Dead
42	Plains Cottonwood	9	0.65	0.7	0.1	0.9	\$ 139	Drought stressed	Remove
43	Plains Cottonwood	0	0.65	0.7	0	0.0	\$ -	dead	Remove/Dead
44	Plains Cottonwood	0	0.65	0.7	0	0.0	\$ -	dead	Remove/Dead
45	Plains Cottonwood	9	0.65	0.7	0.1	0.9	\$ 139	Drought stressed	Remove
46	Plains Cottonwood	0	0.65	0.7	0	0.0	\$ -	dead	Remove/Dead
47	Plains Cottonwood	9	0.65	0.7	0.2	1.8	\$ 277	Drought stressed	Remove
48	Plains Cottonwood	0	0.65	0.7	0	0.0	\$ -	dead	Remove/Dead
49	Plains Cottonwood	7	0.65	0.7	0.2	1.4	\$ 188	Drought stressed	Remove
50	Plains Cottonwood	0	0.65	0.7	0	0.0	\$ -	dead	Remove/Dead
51	Plains Cottonwood	9	0.65	0.7	0.2	1.8	\$ 277	Drought stressed	Remove
52	Plains Cottonwood	33	0.65	0.7	0.1	3.3	\$ 1,544		Remove
53	Plains Cottonwood	0	0.65	0.7	0	0.0	\$ -	still dead	Remove/Dead
57A	Plains Cottonwood	7	0.65	0.7	0.2	1.4	\$ 188		Remove
57B	Plains Cottonwood	7	0.65	0.7	0.2	1.4	\$ 188		Remove
57C	Plains Cottonwood	5	0.65	0.7	0.2	1.0	\$ 121		Remove
57D	Plains Cottonwood	5	0.65	0.7	0.2	1.0	\$ 121		Remove
58A	Plains Cottonwood	9	0.65	0.7	0	0.0	\$ -	dead	Remove/Dead
58B	Plains Cottonwood	9	0.65	0.7	0	0.0	\$ -	dead	Remove/Dead
58C	Plains Cottonwood	7	0.65	0.7	0	0.0	\$ -	dead	Remove/Dead
59	Plains Cottonwood	68	0.65	0.7	0.1	6.8	\$ 6,470	Hazard tree	Remove
60	Plains Cottonwood	32	0.65	0.7	0.1	3.2	\$ 1,453		Remove
61	Pinon Pine	8	0.8	0.7	0.45	3.6	\$ 597		Remove
62	Pinon Pine	5	0.8	0.7	0.6	3.0	\$ 395		Remove
63	Pinon Pine	9	0.8	0.7	0.4	3.6	\$ 647		Remove
64A	Pinon Pine	6	0.8	0.7	0.35	2.1	\$ 296		Remove
64B	Pinon Pine	5	0.8	0.7	0.35	1.8	\$ 230		Remove
64C	Pinon Pine	4	0.8	0.7	0.45	1.8	\$ 227		Remove
65	Pinon Pine	5	0.8	0.7	0.7	3.5	\$ 461		Remove
66	Pinon Pine	5	0.8	0.7	0.4	2.0	\$ 263		Remove
67	Pinon Pine	5	0.8	0.7	0.5	2.5	\$ 329		Remove
68	Pinon Pine	7	0.8	0.7	0.5	3.5	\$ 535		Remove
69	Pinon Pine	7	0.8	0.7	5	35.0	\$ 5,348		Remove
70	Pinon Pine	8	0.8	0.7	0.3	2.4	\$ 398		Remove
71	Pinon Pine	5	0.8	0.7	0.5	2.5	\$ 329		Remove
72	Pinon Pine	4	0.8	0.7	0.5	2.0	\$ 252		Remove
73	Plains Cottonwood	16	0.65	0.7	0.4	9.4	\$ 4,591	3 stems	Remove
74	Plains Cottonwood	17	0.65	0.7	0.4	47.6	\$ 12,001	7 stems	Remove
75	Pinon Pine	6	0.8	0.7	0.5	3.0	\$ 423		Remove
76	Siberian Elm	9	0.6	0.7	0.1	3.6	\$ 524	4 stems	Remove
78	Pinon Pine	5	0.8	0.7	0.7	3.5	\$ 461		Remove
79	Pinon Pine	5	0.8	0.7	0.7	3.5	\$ 461		Remove
80	Pinon Pine	6	0.8	0.7	0.7	4.2	\$ 593		Remove
81	Pinon Pine	5	0.8	0.7	0.7	3.5	\$ 461		Remove
82	Pinon Pine	6	0.8	0.7	0.7	4.2	\$ 593		Remove
83	American Plum	9	0.8	0.7	0.3	5.4	\$ 971	2 stems, poor cond.	Remove
92	Plains Cottonwood	7	0.65	0.7	0.8	5.6	\$ 753	good condition	Remove
93	Plains Cottonwood	5	0.65	0.7	0.8	4.0	\$ 485	good condition	Remove
96	Plains Cottonwood	14	0.65	0.7	0.6	8.4	\$ 1,794	fair condition	Remove
H	Plains Cottonwood	13	0.65	0.7	0.35	50.1	\$ 10,062	11 stems	Remove
I	Plains Cottonwood	21	0.65	0.7	0.6	12.6	\$ 3,843		Remove
L	Black Willow	9	0.65	0.7	0.1	8.1	\$ 1,248	9 stems	Remove
M	Plains Cottonwood	12	0.65	0.7	0.1	4.8	\$ 906	severe dieback	Remove
N	Plains Cottonwood	17	0.65	0.7	0.3	20.4	\$ 5,143	included bark	Remove
O	American Plum	9	0.8	0.7	0.1	4.5	\$ 809	5 stems, severe decay	Remove
P	Plains Cottonwood	9	0.65	0.7	0.2	9.0	\$ 1,387	5 stems	Remove
Q	Plains Cottonwood	25	0.65	0.7	0.6	15.0	\$ 5,381	good condition	Remove
R	Black Willow	6	0.65	0.7	0.3	5.4	\$ 684	3 stems	Remove
S	Ccher, BW	4	0.8	0.7	0.5	16.0	\$ 2,015	8 stems	Remove
Z	Plains Cottonwood	15	0.65	0.7	0.3	135.0	\$ 30,546	Drought stressed	Remove
AA	American Plum	4	0.8	0.7	0.4	6.4	\$ 806	4 stems	Remove
BB	Plains Cottonwood	9	0.65	0.7	0.4	176.4	\$ 27,186	49 stems, fair cond.	Remove
CC	Black Willow	10	0.65	0.7	0.1	4.0	\$ 661	4 stems, poor cond.	Remove
DD	Ccher	4	0.8	0.7	0.6	2.4	\$ 302		Remove
EE	Ccher	6	0.8	0.7	0.6	3.6	\$ 508		Remove
FF	BW	5	0.65	0.7	0.2	4.0	\$ 485	4 stems	Remove
GG	Plains Cottonwood	9	0.65	0.7	0.2	16.2	\$ 2,497	9 stems, poor cond.	Remove
HH	Plains Cottonwood	13	0.65	0.7	0.6	109.2	\$ 21,953	14 stems, good cond.	Remove
AAA-A	Pinon Pine	6	0.8	0.7	0.3	1.8	\$ 254		Remove
AAA-B	Pinon Pine	5	0.8	0.7	0.3	1.5	\$ 197		Remove
						882.9	\$ 173,475		

NON-BLACK FOREST TREE PRESERVATION DATA - FILING 2

TREE #	SPECIES	DBH	SPEC %	LOC. %	COND % 2018	MITIGATION Inches 2018	\$ VALUE 2018	COMMENTS	Action
21	Pinon Pine	8	0.8	0.7	0.55	4.4	\$ 730		Preserve
22	Pinon Pine	7	0.8	0.7	0.4	2.8	\$ 428		Preserve
23A	Pinon Pine	6	0.8	0.7	0.6	3.6	\$ 508		Preserve
23B	Pinon Pine	5	0.8	0.7	0.6	3.0	\$ 395		Preserve
54	Plains Cottonwood	23	0.65	0.7	0.1	2.3	\$ 763		Preserve
55A	Plains Cottonwood	5	0.65	0.7	0.2	1.0	\$ 121		Preserve
55B	Plains Cottonwood	4	0.65	0.7	0.2	0.8	\$ 96		Preserve
J-A	Plains Cottonwood	8	0.65	0.7	0.3	2.4	\$ 345	included bark	Preserve
J-B	Plains Cottonwood	13	0.65	0.7	0.3	3.9	\$ 784	included bark	Preserve
J-C	Plains Cottonwood	16	0.65	0.7	0.3	4.8	\$ 1,148	included bark	Preserve
K-A	Plains Cottonwood	18	0.65	0.7	0.3	5.4	\$ 1,432	included bark	Preserve
K-B	Plains Cottonwood	15	0.65	0.7	0.3	4.5	\$ 1,018	included bark	Preserve
						38.9	\$ 7,768		

50' BUFFER CHART - FILING 2

NO TREES ARE LOCATED WITHIN 50' OUTSIDE OF CONSTRUCTION LIMITS FOR FILING 2.

NON-BLACK FOREST TREE MITIGATION SUMMARY - FILING 2

TOTAL TREES	PRESERVED TREES	REMOVED AND REQ. MITIGATED TREES	RELOCATED TREES	MITIGATION TREES PROVIDED		
97	12	85	0	HEIGHT	QTY	INCHES
% OF TOTAL	12%	88 %	0%	8' HT. EVERGREENS	144 TREES	576"
		MITIGATION INCHES 882.9"			10' HT. EVERGREENS	50 TREES 250"
				12' HT. EVERGREENS	10 TREES	60"
				TOTAL	886"	

NOTE:

- MITIGATION INCHES HAVE BEEN REPLACED WITH EVERGREEN TREES BASED ON THE MITIGATION RATIO OF 1" DBH = 2' HEIGHT FOR EVERGREEN TREES.
- TOTAL TREE COUNT DOES NOT INCLUDE DEAD TREES.



1101 Bannock Street
Denver, Colorado 80204
P 303.892.1166
F 303.892.1186

KINGS POINT - FILING 1 & 2
TREE PROTECTION PLAN
AURORA, CO

OWNER:
KINGS POINT LLC
CONTACT: BRUCE STOKES
3033 E 1ST AVE #410
DENVER, CO
303-394-5500
303-394-5508



DATE:
9-16-16
3-16-17
4-27-17
6-09-17
5-11-18
6-15-18
7-06-18
9-07-18

SHEET TITLE:
TREE MITIGATION
CHARTS -FILING 2

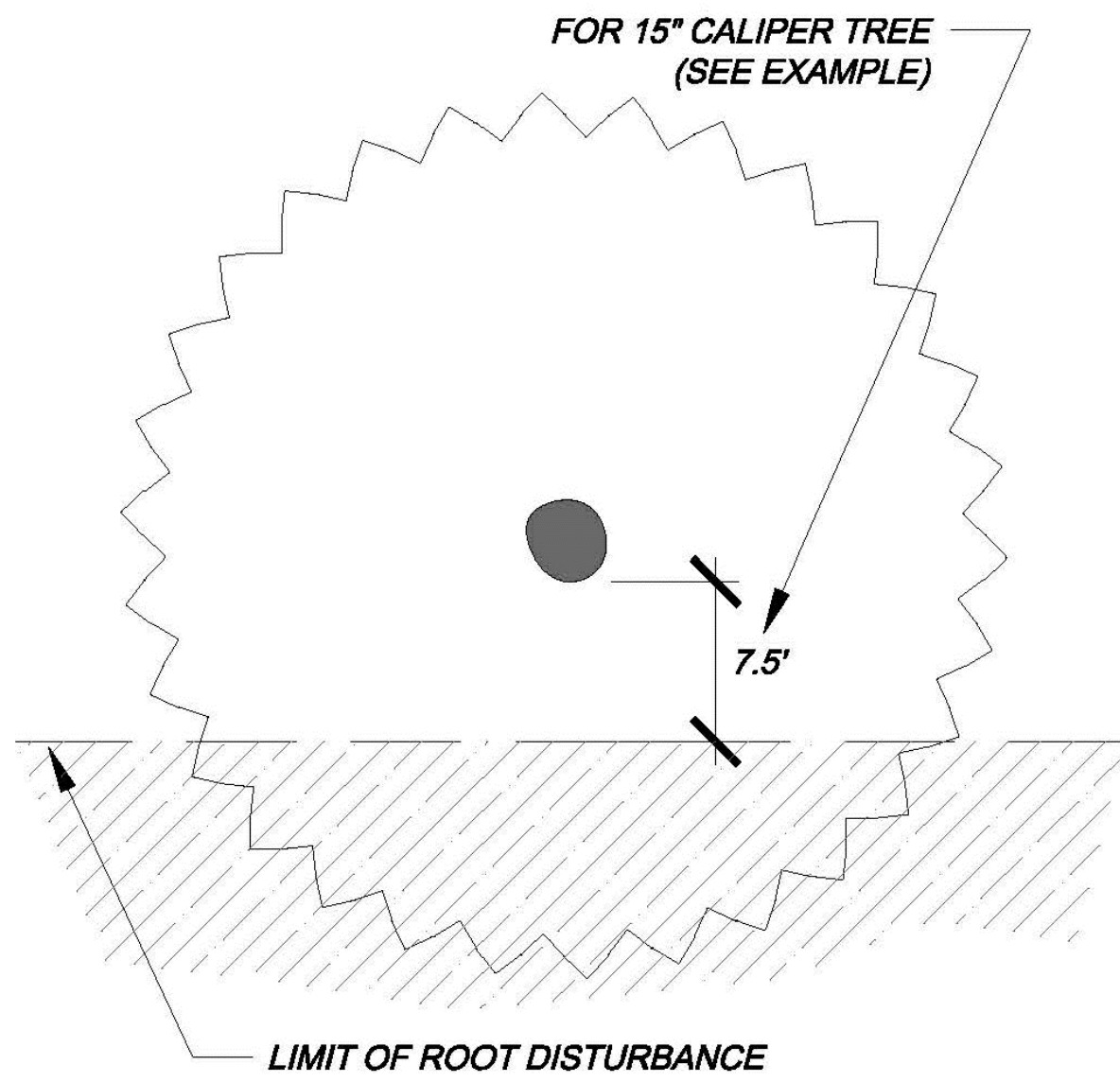
TREE PROTECTION NOTES

1. PRIOR TO THE BEGINNING OF CONSTRUCTION, ESTABLISH THE TREE PROTECTION ZONE BY INSTALLING TREE PROTECTION FENCING AROUND ALL EXISTING TREES TO REMAIN. LOCATE FENCING AT THE OUTSIDE OF THE DRIP LINE OF THE TREES OR AT A DISTANCE OF FROM THE TREE TRUNK OF ONE(1) FOOT OF RADIUS FOR EVERY INCH OF TRUNK DIAMETER, WHICHEVER IS GREATER. FOR GROUPS OF TREES, THE MINIMUM DISTANCE BETWEEN THE TREE TRUNK AND THE FENCING SHALL BE ONE(1) FOOT FOR EACH INCH OF TRUNK DIAMETER. FOLLOWING INSTALLATION OF FENCING, REQUEST INSPECTION BY THE CITY OF AURORA FORESTRY DIVISION OR AUTHORIZED DESIGNEE.
2. TREE PROTECTION FENCING SHALL BE 4' HEIGHT, ORANGE MESH FENCING ATTACHED TO T POSTS. FENCING SHALL BE INSPECTED AND MAINTAINED DAILY.
3. CONTRACTORS SHALL BE RESPONSIBLE FOR ALL OF THEIR WORKERS, SUBCONTRACTORS AND SUPPLIERS UNDER THIS REQUIREMENT. WITHIN THE TREE PROTECTION ZONE, THE FOLLOWING CONSTRUCTION ACTIVITIES SHALL NOT BE ALLOWED EXCEPT AS NECESSARY TO EXECUTE DETAILS TP-2.0, 2.1, 3.1 & 3.2:
 - A. EQUIPMENT USE AND STORAGE
 - B. MATERIAL DELIVERY OR STORAGE
 - C. VEHICLE TRAFFIC, PARKING, USE OR STORAGE
 - D. SPREADING, EXCAVATING, COMPACTING OR STOCKPILING OF SOIL
 - E. CONCRETE WASH-OUT AREAS AND RUN-OFF FROM CONCRETE WASH-OUT AREAS
 - F. FOOT TRAFFIC
 - G. RUN-OFF CONTAINING HARMFUL LIQUIDS SUCH AS OIL, GAS, PAINT, SOLVENTS, FERTILIZER, ASPHALT, MORTAR, TAR OR SIMILAR MATERIALS
4. VIOLATION OF THE TREE PROTECTION ZONE SHALL RESULT IN A FINE OF \$100 PER INCIDENCE AND MAY BE INCREASED BASED ON THE PERCENTAGE OF THE ZONE AFFECTED MULTIPLIED BY THE FULL VALUE OF THE TREE (OR TREES) ESTABLISHED PRIOR TO CONSTRUCTION. IF MORE THAN 30% OF THE TREE PROTECTION ZONE IS DAMAGED, THE FINE SHALL BE THE FULL VALUE OF THE ADJACENT TREE (OR TREES). FOR THE PURPOSE OF THESE REQUIREMENTS, CONSTRUCTION FENCING (LOCATED AT THE LIMITS OF CONSTRUCTION) SHALL BE TREATED AS TREE PROTECTION FENCING AND SHALL ESTABLISH A TREE PROTECTION ZONE FOR NEARBY TREES.
5. DAMAGE TO THE MAIN TRUNKS OF TREES IS PROHIBITED. DAMAGE NOT PREVIOUSLY DOCUMENTED SHALL RESULT IN A FINE BASED ON THE PERCENTAGE OF THE CIRCUMFERENCE AFFECTED. DAMAGE GREATER THAN 30% OF THE CIRCUMFERENCE OR AFFECTING THE STRUCTURAL INTEGRITY OF THE TREE WILL RESULT IN A FINE EQUAL TO THE FULL VALUE OF THE TREE.
6. LIMB REMOVAL IS PROHIBITED, UNLESS APPROVED PRIOR TO CONSTRUCTION OR AS AUTHORIZED BY THE CITY OF AURORA FORESTRY DIVISION. LIMB REMOVAL, IF APPROVED, SHALL BE DONE PRIOR TO THE START OF CONSTRUCTION. DAMAGED BRANCHES SHALL BE PRUNED WITHIN 10 DAYS OF THE OCCURRENCE UTILIZING ANSI A300 STANDARDS. UNAUTHORIZED LIMB DAMAGE OR REMOVAL CAN RESULT IN A FINE OF \$100 PER BRANCH AS MAY BE DETERMINED BY THE CONSTRUCTION MANAGER OR HIS FORESTRY CONSULTANT. LIMB REMOVAL AND ALL OTHER APPROVED PRUNING SHALL BE PERFORMED BY A PROFESSIONAL COMPANY THAT IS LICENSED BY THE CITY OF AURORA FORESTRY DIVISION.
7. IF ROOTS GREATER THAN ONE(1) INCH DIAMETER REQUIRE CUTTING/REMOVAL, A CLEAN CUT SHALL BE ACCOMPLISHED USING A SHARP HAND TOOL. A MAXIMUM OF TWO(2) 3-INCH DIAMETER ROOTS PER TREE ARE PERMITTED FOR REMOVAL. THE REMOVAL OF ADDITIONAL ROOTS 3-INCHES OR GREATER IN DIAMETER REQUIRES APPROVAL OF THE CITY FORESTER OR AUTHORIZED DESIGNEE.
8. EXISTING TREES DAMAGED BY CONSTRUCTION ACTIVITIES SHALL BE IMMEDIATELY REPAIRED AND IF DAMAGED BEYOND REPAIR, REPLACED PER THE MITIGATION SPECIFICATIONS OUTLINED IN SECTION IV, SUBSECTION A, ITEM 3 OF THE TREE PRESERVATION POLICY. THE MITIGATION PLAN FOR THESE TREES SHALL FOLLOW THAT APPROVED THROUGH THE SITE PLAN SUBMITTAL.

CITY OF AURORA STANDARD NOTES

TREE PROTECTION - ONE SIDE

CITY OF AURORA STANDARD DETAIL



FORMULA FOR LIMIT OF DISTURBANCE:

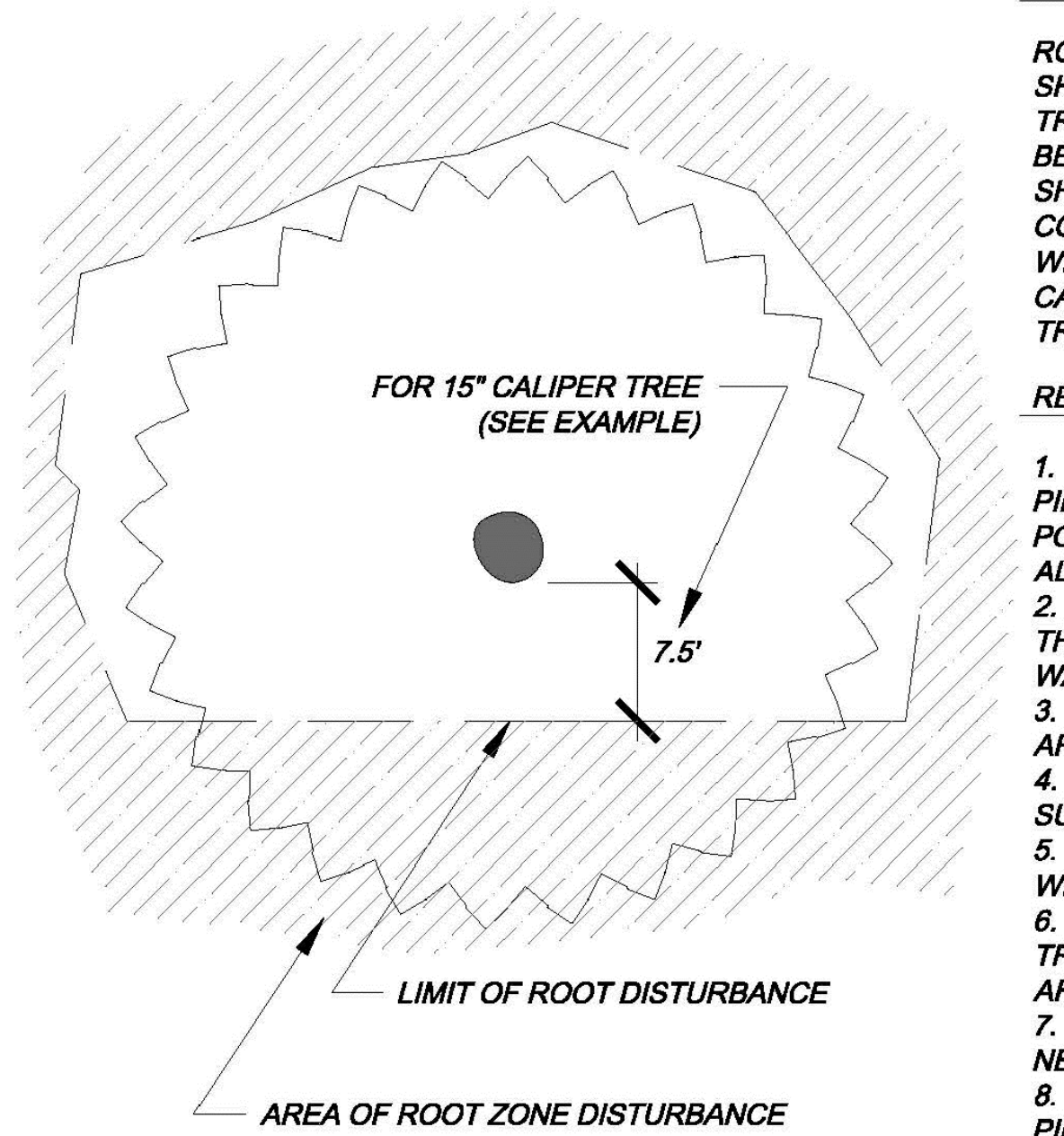
ROOT ZONE DISTURBANCE SHALL NOT BE ALLOWED CLOSE TO THE TRUNK OF ANY TREE TO BE PRESERVED. MINIMUM DISTANCE BETWEEN THE TRUNK AND THE DISTURBANCE SHALL BE EQUAL TO 1/2 OF THE TREE'S DIAMETER CONVERTED TO FEET. (FOR EXAMPLE, FOR A TREE WITH A 15" DIAMETER TRUNK, THE DISTURBANCE CAN NOT BE CLOSER THAN 7.5 FEET FROM THE TRUNK.

REQUIRED TREATMENTS:

1. APPLY PREVENTATIVE SPRAY FOR MOUNTAIN PINE BEETLE (MPB) AND IPS TO PONDEROSA, AUSTRIAN & SCOTCH PINES. TREAT ALL BARK SURFACES, INCLUDING TOP BRANCHES.
2. IF DISTURBANCE LEAVES A CUT SLOPE, IMMEDIATELY APPLY MULCH AND WATER. IF DISTURBANCE IS A TRENCH, IMMEDIATELY BACKFILL AND WATER.
3. ONCE PER MONTH, EVALUATE TREE TO DETERMINE IF TREE IS LEANING OR IF BRANCHES / LEAVES ARE AFFECTED BY ROOT LOSS.
4. DO NOT FERTILIZE.
5. INSPECT TREE 2-3 TIMES PER YEAR FOR WATER NEEDS AND MONITOR FOR INSECTS.
6. PROVIDE SUPPLEMENTAL WATERING DURING 1-3 WINTERS.

TREE PROTECTION - MORE THAN ONE SIDE

CITY OF AURORA STANDARD DETAIL



LIMITATIONS OF ROOT ZONE DISTURBANCE:

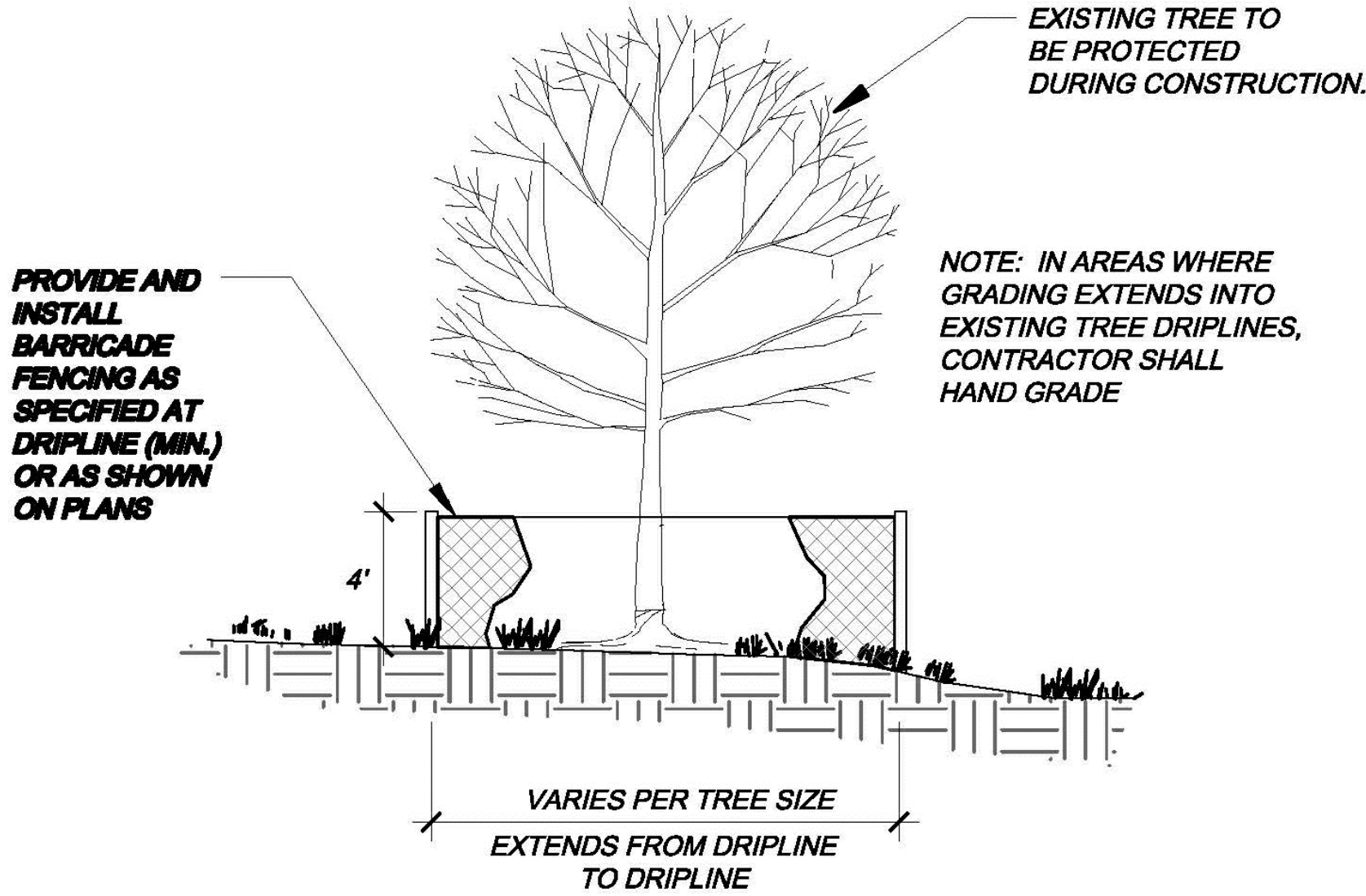
ROOT ZONE DISTURBANCE WITHIN THE DRIP LINE SHALL BE LIMITED TO ONE SIDE OF THE TRUNK OF TREES TO BE PRESERVED. MINIMUM DISTANCE BETWEEN THE TRUNK AND THE DISTURBANCE SHALL BE EQUAL TO 1/2 OF THE TREE'S DIAMETER CONVERTED TO FEET. (FOR EXAMPLE, FOR A TREE WITH A 15" DIAMETER TRUNK, THE DISTURBANCE CAN NOT BE CLOSER THAN 7.5 FEET FROM THE TRUNK.

REQUIRED TREATMENTS:

1. APPLY PREVENTATIVE SPRAY FOR MOUNTAIN PINE BEETLE (MPB) AND IPS TO PONDEROSA, AUSTRIAN & SCOTCH PINES. TREAT ALL BARK SURFACES, INCLUDING TOP BRANCHES.
2. IF DISTURBANCE LEAVES A CUT SLOPE WITHIN THE DRIPLINE, IMMEDIATELY APPLY MULCH AND WATER.
3. APPLY 3"-5" OF ORGANIC MULCH OVER THE AREA WITHIN THE DRIPLINE.
4. EVERY 1-2 WEEKS, APPLY 50-100 GALLONS OF SUPPLEMENTAL WATER.
5. PROVIDE SUPPLEMENTAL WATER DURING 1-3 WINTERS.
6. REGULARLY EVALUATE TREE TO DETERMINE IF TREE IS LEANING OR IF BRANCHES / LEAVES ARE AFFECTED BY ROOT LOSS.
7. INSPECT TREE 2-3 TIMES PER YEAR FOR WATER NEEDS AND MONITOR FOR INSECTS.
8. INSTALL STAKING OR SUPPORT FOR SMALLER PINE TREES.

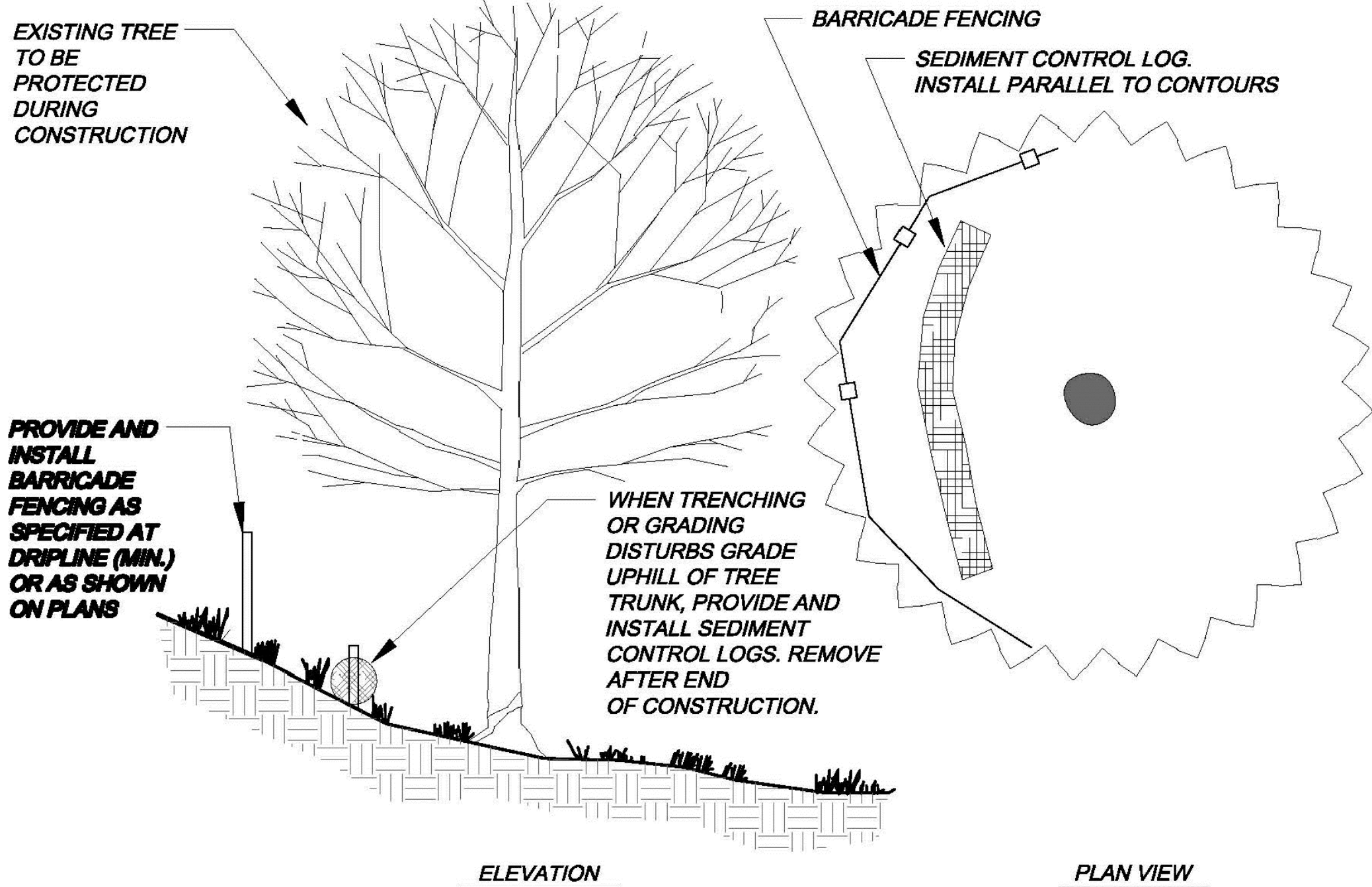
TREE PROTECTION - ELEVATION

CITY OF AURORA STANDARD DETAIL



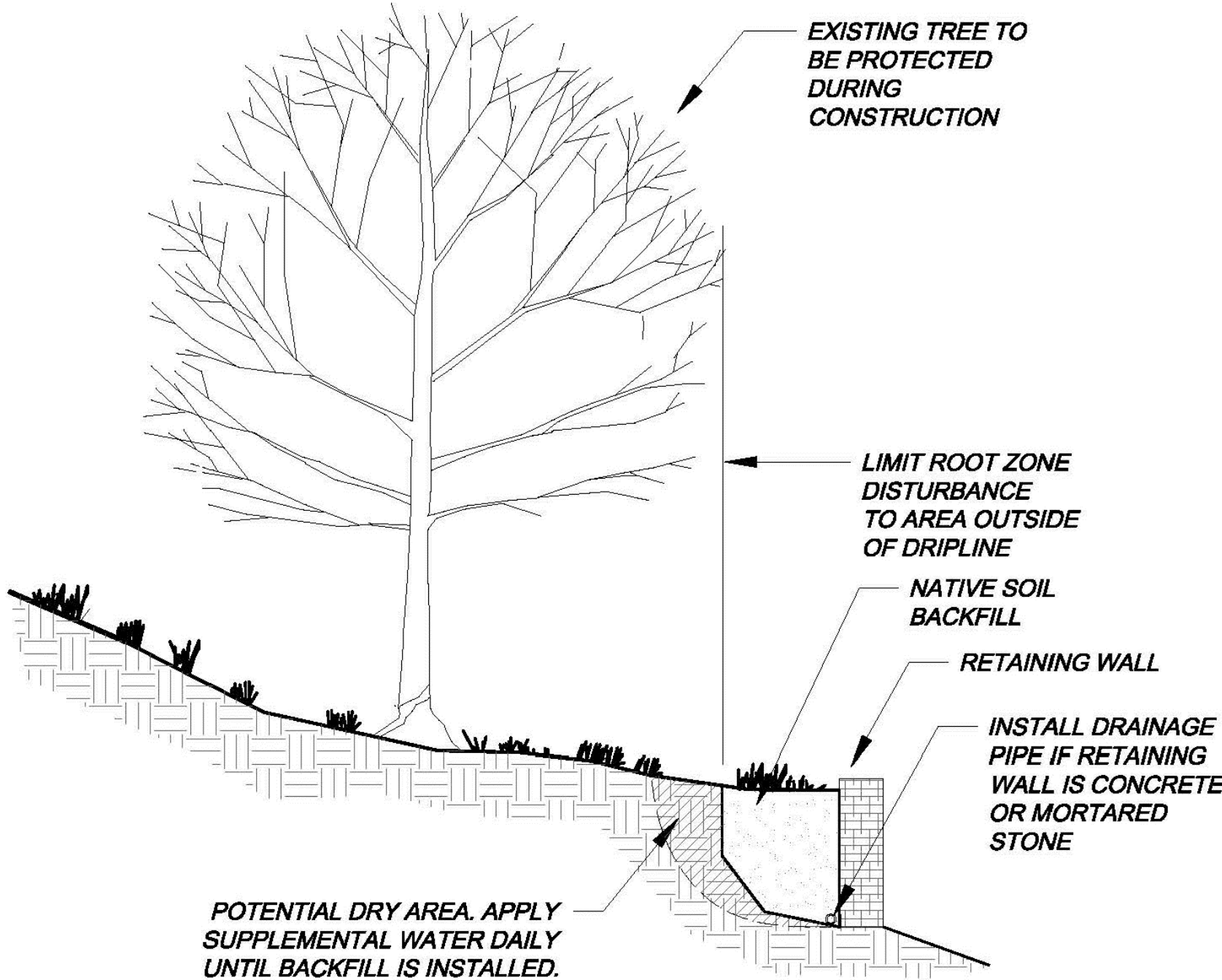
TREE PROTECTION - ON A SLOPE

CITY OF AURORA STANDARD DETAIL

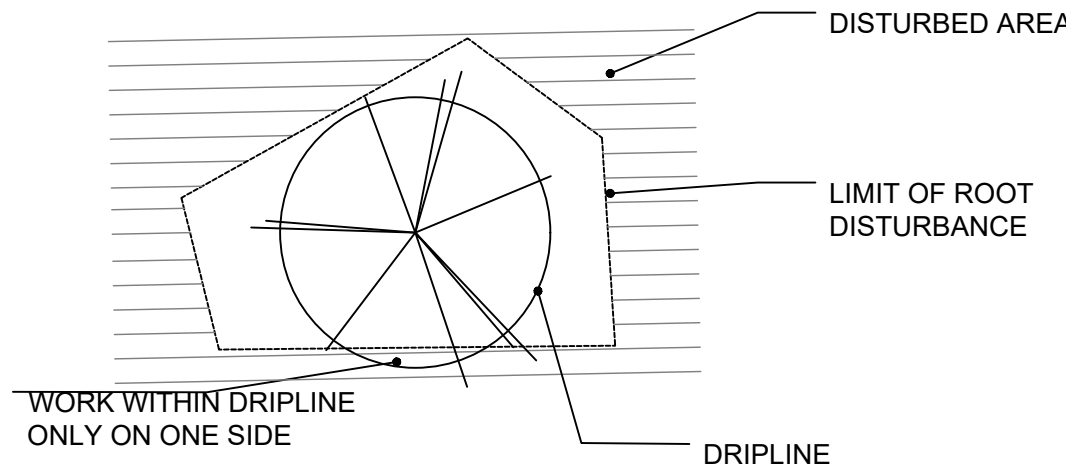


TREE PROTECTION - NEW RETAINING WALL

CITY OF AURORA STANDARD DETAIL



ROOT LOSS ON ONE SIDE WITH SIGNIFICANT IMPACT ON THE TREE SURVIVAL

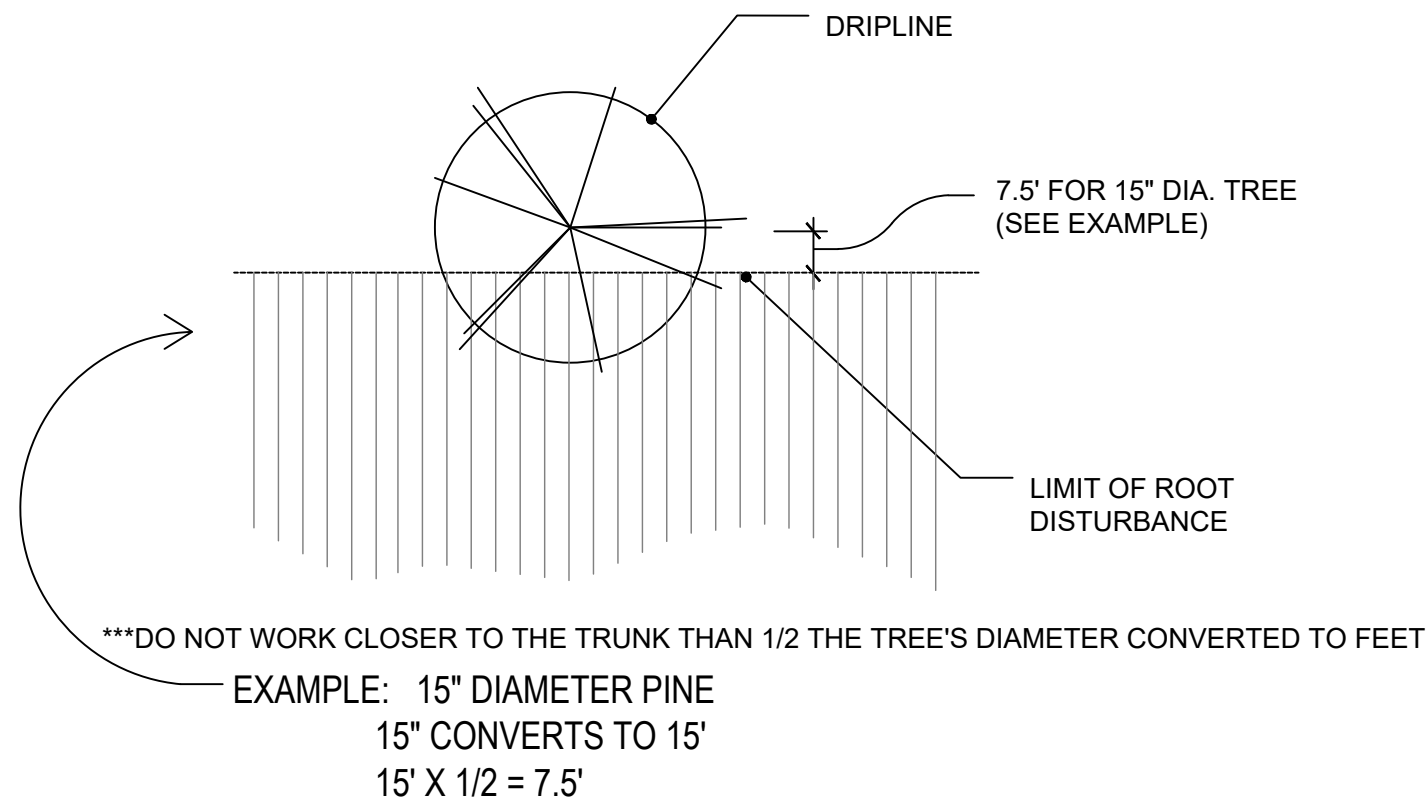


WHEN WORKING COMPLETELY AROUND A TREE, DO NOT WORK WITHIN THE DRIPLINE ON MORE THAN ONE SIDE. APPLIES TO TRANSPLANTED AND INTRODUCED PINES AS WELL AS CONSTRUCTION IMPACTED TREES.

TREATMENT:

- USE 3"-5" OF MULCH EXTENDING TO DRIPLINE.
- PREVENTATIVE SPRAY FOR MPB AND IPS.
- ALL BARK SURFACES TO BE TREATED INCLUDING TOP AND BRANCHES.
- SUPPLEMENTAL WATERING, 50-100 GALLONS, APPLIED EVERY 1-2 WEEKS.
- WINTER WATER FOR 1-3 WINTERS.
- EVALUATE FOR LEAN OR DEFECT.
- INSPECT 2-3 TIMES PER YEAR FOR WATER NEEDS AND MONITOR FOR INSECTS.
- STAKING / SUPPORT ON SMALLER PINES.

ROOT LOSS ON ONE SIDE WITH MINIMAL IMPACT ON THE TREE SURVIVAL (30-120 YEARS OLD PINES)



EXAMPLE: 15" DIAMETER PINE
15" CONVERTS TO 15'
15' X 1/2 = 7.5'

- TREATMENT:
- PREVENTATIVE SPRAY FOR MOUNTAIN PINE BEETLE (MPB).
 - ALL BARK SURFACES TO BE TREATED INCLUDING TOP BRANCHES.
 - MULCH EDGE OF CUT AREA AND WATER IN.
 - EVALUATE FOR LEAN OR DEFECT.
 - DO NOT FERTILIZE.

NOTE: THIS IS INTENDED AS A GUIDELINE ONLY AND IT IS NOT INTENDED TO BE A HARD AND FAST RULE. TREE AGE, HEALTH AND PROXIMITY TO IMPROVEMENTS CAN AFFECT WORKING DISTANCES.