

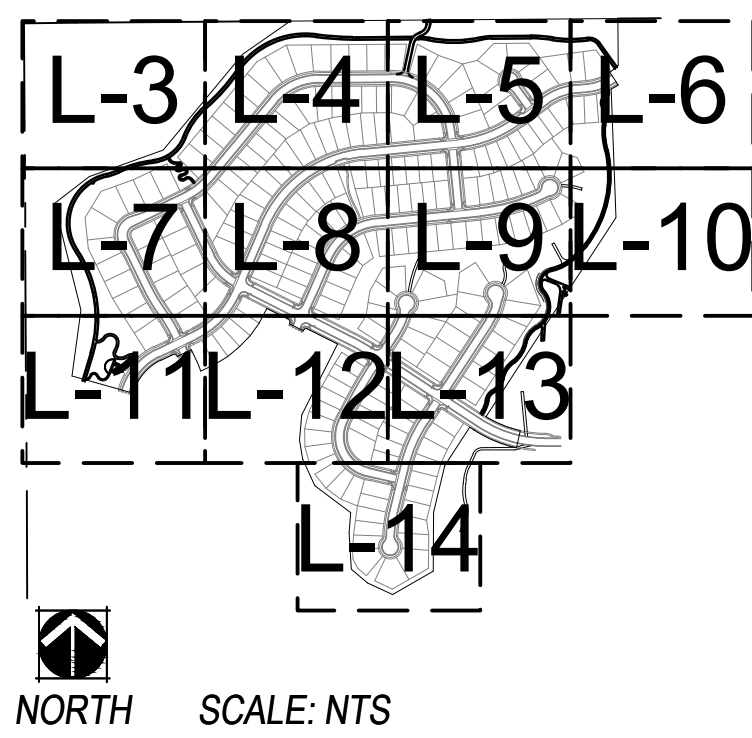
ROCKINGHORSE
CONTEXTUAL SITE PLAN No. 10

ADDRESS: AURORA, COLORADO
PREPARED FOR: ROCKINGHORSE METRO DISTRICT
OWNER: NASH INSPIRATION, LLC
OWNER ADDRESS: 9033 E. EASTER PLACE, STE 110
CENTENNIAL, CO 80112
OWNER PHONE: 303-947-0744
CONTACT: SANDI THOMAS

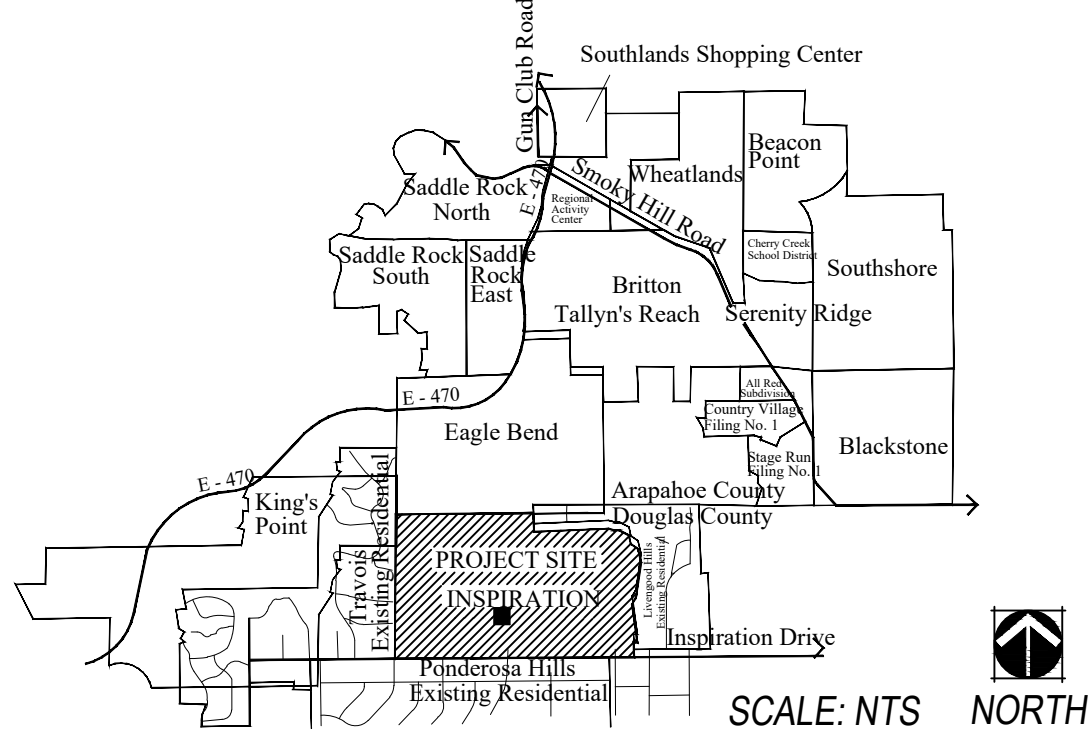
SHEET INDEX

L-1 LANDSCAPE COVER SHEET
L-2 PLANT LIST AND NOTES
L-3 LANDSCAPE PLAN
L-4 LANDSCAPE PLAN
L-5 LANDSCAPE PLAN
L-6 LANDSCAPE PLAN
L-7 LANDSCAPE PLAN
L-8 LANDSCAPE PLAN
L-9 LANDSCAPE PLAN
L-10 LANDSCAPE PLAN
L-11 LANDSCAPE PLAN
L-12 LANDSCAPE PLAN
L-13 LANDSCAPE PLAN
L-14 LANDSCAPE PLAN
MFP MASTER FENCE AND TRAILS PLAN
LD-1 LANDSCAPE DETAILS
LD-2 LANDSCAPE DETAILS
HZM HYDRO-ZONE MAP

SHEET KEY MAP



VICINITY MAP



LANDSCAPE ARCHITECT



ENGINEER



OPEN SPACE TRACT LANDSCAPE TABLE

Area (Tract)	Description	Area / Length	Trees Required	Trees Provided	Shrubs Required	Shrubs Provided
A	Open Space (1 Tree and 10 Shrubs per 3,750 SF)	392,526	105	154	1050	619
C	Open Space (1 Tree and 10 Shrubs per 3,750 SF)	9,502	3	6	26	0
D	Open Space (1 Tree and 10 Shrubs per 3,750 SF)	300,071	80	160	800	0
E	Open Space (1 Tree and 10 Shrubs per 3,750 SF)	55,084	15	30	147	0
Totals:		757,163	203	350	2023	619

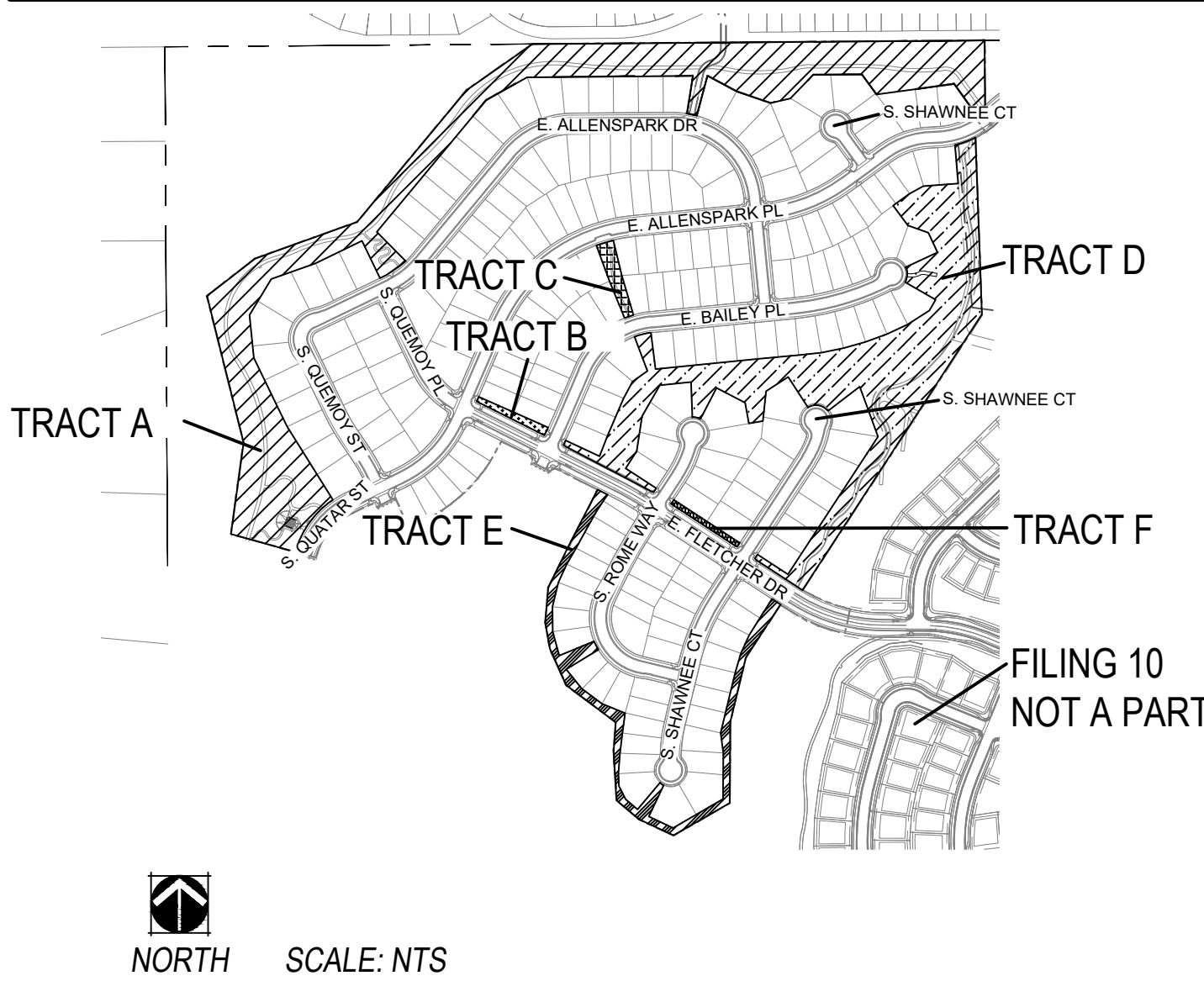
NOTES:
1.) Tracts B and F are Street Frontage Buffer Only Tracts.
2.) All Trees will be a minimum of 2.5" Caliper or 6" for Evergreens and Shrubs a Minimum of Container #5 Size, or 3 x Container #1 per Shrub Quantity show in table for Ornamental Grasses.

STANDARD RIGHTS-OF-WAY STREET TREE TABLE

Street Tree Description	Length	Trees Required	Trees Provided	Transfers
S. Quemoys Place (1 Tree / 40 LF)	635 FT	16	16	
E. Fletcher Drive (1 Tree / 40 LF)	2,143 FT	54	54	
S. Quemoys Street (1 Tree / 40 LF)	940 FT	24	24	
E. Allenspark Drive (1 Tree / 40 LF)	3,684 FT	93	93	
S. Shawnee CT (1 Tree / 40 LF)	2,550 FT	64	64	
E. Bailey Place (1 Tree / 40 LF)	2,473 FT	62	62	
S. Rome Way (1 Tree / 40 LF)	1,690 FT	43	43	
S. Quatar Street (1 Tree / 40 LF)	560 FT	14	14	
E. Allenspark Place (1 Tree / 40 LF)	4,190 FT	105	101	4 Trees to Tract A
Totals:		475	471	(-4)

NOTES:
1.) Due to Utility Conflicts 4 Trees on S. Versailles Street were Transferred to Adjacent Tract A.
2.) Distances measured between tangent points, intersecting Drives and areas not able to be planted (stop sign areas) are Excluded.
3.) Shaded trees on site plan are Home Builder Trees and are the responsibility of Home Builder to install.

TRACT KEY MAP



NON STREET FRONTAGE BUFFER TABLE

Site Perimeter	Site Perimeter Description	Length	Trees Required	Trees Provided	Shrubs Required	Shrubs Provided
North	Site Perimeter Buffer (Residential): (1 Tree and 5 Shrubs per 40 LF)	2,475 LF	62	93	310	0
West	Site Perimeter Buffer (Residential): (1 Tree and 5 Shrubs per 40 LF)	1,462 LF	37	74	366	0
Totals:			99	167	676	0

NOTES:
1.) 31 Trees Replaced 310 Shrubs along the North Site Perimeter and 37 Trees replaced 366 shrubs along the West Site Perimeter.
2.) All Trees will be a minimum of 2.5" Caliper or 6" for Evergreens and Shrubs a Minimum of Container #5 Size, or 3 x Container #1 per Shrub Quantity show in table for Ornamental Grasses.

STREET FRONTAGE BUFFER TABLE

Street Frontage Description	Length	Trees Required	Trees Provided	Shrubs Required	Shrubs Provided
Street Perimeter Buffer: E Fletcher Dr (1 Tree and 10 Shrubs per 40 LF)	763 LF	20	19	191	206
Totals:		20	19	191	206

NOTES:
1.) 10 Shrubs Replaced 1 Tree along the E. Fletcher Dr Buffer.
2.) All Trees will be a minimum of 2.5" Caliper or 6" for Evergreens and Shrubs a Minimum of Container #5 Size, or 3 x Container #1 per Shrub Quantity show in table for Ornamental Grasses.
3.) Tracts included in E. Fletcher Dr Street Frontage Buffer: Tract B, Tract F and Part of Tract D (4,065 SF)

WATER USE TABLE

Area (Tract)	Water Conserving Irrigation (Non-Sod)	Non-Water Conserving Irrigation (Sod)	Z-Zone Area	Non-Irrigated Area/ Pavement	Total Area (SF)
A	35,855 SF	10,799 SF	264,577 SF	81,295 SF	392,526 SF
B	4,066 SF	700 SF	0 SF	0 SF	4,766 SF
C	2,150 SF	0 SF	6,225 SF	1,127 SF	9,502 SF
D	19,926 SF	580 SF	111,428 SF	144,772 SF	300,071 SF
E	3,197 SF	0 SF	48,760 SF	3,107 SF	55,064 SF
F	3,086 SF	380 SF	0 SF	0 SF	3,466 SF
ROW	475 SF	33,043 SF	0 SF	632,055 SF	665,573 SF
Totals:	68,755 SF	45,502 SF	430,990 SF	862,356 SF	1,430,968 SF
Non-Water Conserving %:		6.70%			



Know what's below.
Call before you dig.

SHEET TITLE:
LANDSCAPE
COVER SHEET
SHEET NUMBER:

L-1

NOT FOR
CONSTRUCTION

CSP AMENDMENT 01: MAY 1, 2020



CHECKED BY: SM
DRAWN BY: TDDR

LANDSCAPE PLANT LIST

QTY	SYM.	COMMON NAME	BOTANICAL NAME	SIZE & COND.	QTY	SYM.	COMMON NAME	BOTANICAL NAME	SIZE & COND.
DECIDUOUS CANOPY TREES					GRASSES				
(UNLESS OTHERWISE NOTED)									
75	ABM	AUTUMN BLAZE MAPLE	ACER X FREEMANII 'AUTUMN BLAZE'	2 1/2" CAL. B&B	40	CMG	MORNING LIGHT MAIDEN GRASS	MISCANTHUS SINENSIS 'MORNING LIGHT'	#1 CONT.
06	CAL	WESTERN CATALPA	CATALPA SPECIOSA	2 1/2" CAL. B&B	92	GHM	HEAVY METAL SWITCH GRASS	PANICUM VIRGATUM 'HEAVY METAL'	#1 CONT.
93	GLI	GREENSPIRE LINDEN	TILIA CORDATA 'GREENSPIRE'	2 1/2" CAL. B&B	143	HFG	HARDY FOUNTAIN GRASS	PENNISETUM ALOPECUROIDES 'HAEMELN'	#1 CONT.
71	HAC	COMMON HACKBERRY	CELTIS OCCIDENTALIS	2 1/2" CAL. B&B	30	KFG	KOREAN FEATHER REED GRASS	CALAMAGROSTIS BRACHYTRICHA	#1 CONT.
57	ROA	NORTHERN RED OAK	QUERCUS RUBRA	2 1/2" CAL. B&B	45	PMG	PURPLE MAIDEN GRASS	MISCANTHUS SINENSIS 'PURPURESCENS'	#1 CONT.
105	SKY	SKYLINE LOCUST	GLEDITSIA TRIACANTHOS INERMIS 'SKYLINE'	2 1/2" CAL. B&B	59	URM	UNDAUNTED RUBY MUHYL GRASS	MUHLENBERGIA REVERCHONII UNDAUNTED	#1 CONT.
22	SUN	SUNBURST LOCUST	GLEDITSIA TRIACANTHOS INERMIS 'SUNBURST'	2 1/2" CAL. B&B	PERENNIALS				
26	BOA	BUR OAK	QUERCUS MACROCARPA	2 1/2" CAL. B&B					
26	EOA	ENGLISH OAK	QUERCUS ROBUR	2 1/2" CAL. B&B	26	BBA	BEE BALM	MONARDA DIDYMA	#1 CONT.
EVERGREEN TREES					30	BES	BLACK EYED SUSAN	RUDBEKIA FULGIDA 'GOLDSTURM'	#1 CONT.
183	AUS	AUSTRIAN PINE	PINUS NIGRA	6' HT. MIN	31	BGO	BASKET OF GOLD	AURINA SAXATILIS 'GOLD BALL'	#1 CONT.
138	PIN	PINON PINE	PINUS EDULIS	6' HT. MIN	93	CFL	CONEFLOWER	ECHINACEA PURPUREA	#1 CONT.
197	PON	PONDEROSA PINE	PINUS PONDEROSA	6' HT. MIN	57	COM	MOONBEAM COREOPSIS	COREOPSIS VERTICILLATA 'MOONBEAM'	#1 CONT.
DECIDUOUS ORNAMENTAL TREES					72	HYB	SEDUM, STONECROP	SEDUM HYBRIDUM	#1 CONT.
03	LTR	JAPANESE TREE LILAC	SYRINGA RETICULATA	2" CAL. B&B	40	LUP	LUPINE, RUSSELL HYBRIDS	LUPINUS 'RUSSELL STRAIN'	#1 CONT.
10	PRF	PRAIRIEFIRE CRAB (PINK)	MALUS 'PRAIRIEFIRE'	2" CAL. B&B					
01	RAD	RADIANT CRAB (RED)	MALUS X 'RADIANT'	2" CAL. B&B					
DECIDUOUS SHRUBS- 2'-5' SPREAD					IRRIGATED MANICURED TURF				
62	RSD	DWARF RUSSIAN SAGE	PEROVSKIA ARTIPLICIFOLIA 'LITTLE SPIRE'	#5 CONT.	"TEXAS HYBRID" BLUEGRASS SOD. CONTRACTOR SHALL SUBMIT CUTSHEETS FOR APPROVAL.				
12	NFS	NEON FLASH SPIREA	SPIRAEA JAPONICA 'NEON FLASH'	#5 CONT.	SOD				
03	GFS	GOLDFLAME SPIREA	SPIRAEA JAPONICA 'GOLDFLAME'	#5 CONT.					
42	JWS	JAPANESE WHITE SPIREA	SPIRAEA JAPONICA 'ALBIFLORA'	#5 CONT.					
65	LPS	LITTLE PRINCESS SPIREA	SPIRAEA JAPONICA 'LITTLE PRINCESS'	#5 CONT.					
9	NKL	MISS KIM DWARF LILAC	SYRINGA PATULA 'MISS KIM'	#5 CONT.					
18	NLD	LITTLE DEVIL NINEBARK	PHYSOCARPUS OPULIFOLIUS 'DONNA MAY'	#5 CONT.					
DECIDUOUS SHRUBS- 5'-7' SPREAD									
22	BMS	BLUE MIST SPIREA	CARYOPTERIS X CLANDONENSIS 'BLUE MIST'	#5 CONT.					
08	CCB	CORAL BEAUTY COTONEASTER	COTONEASTER DAMMERI 'CORAL BEAUTY'	#5 CONT.					
21	DBB	DWARF BURNING BUSH	EUONYMUS ALATUS 'COMPACTA'	#5 CONT.					
10	DKO	DWARF KOREAN LILAC	SYRINGA MEYERI 'ROYALTY'	#5 CONT.					
15	IDO	ISANTI DOGWOOD	CORNUS STOLONIFERA 'ISANTI'	#5 CONT.					
76	SMS	SNOWMOUND SPIREA	SPIRAEA NIPPONICA 'SNOWMOUND'	#5 CONT.					
DECIDUOUS SHRUBS- 7'-9' SPREAD									
25	BBU	BURNING BUSH	EUONYMUS ALATUS	#5 CONT.					
13	CPL	COMMON PURPLE LILAC	SYRINGA VULGARIS	#5 CONT.					
10	CPP	CISTENA PLUM	PRUNUS X CISTENA	#5 CONT.					
04	NCH	NATIVE CHOKECHERRY	PRUNUS VIRGINIANA MELANOCARPA	#5 CONT.					
15	RTD	RED TWIG DOGWOOD	CORNUS STOLONIFERA 'BAILEY'	#5 CONT.					
08	VKS	KOREAN SPICE VIBURNUM	VIBURNUM CARLESII	#5 CONT.					
EVERGREEN SHRUBS									
106	BRO	BROADMOOR JUNIPER	JUNIPERUS SABINA 'BROADMOOR'	#5 CONT.					
90	DSC	DWARF SCOTCH PINE	PINUS SYLVESTRIS 'GLAUCA NANA'	#5 CONT.					
11	GSP	GLOBE SPRUCE	PICEA PUNGENS 'GLOBOSA'	#5 CONT.					
68	HUG	HUGHES JUNIPER	JUNIPERUS HORIZONTALIS 'HUGHES'	#5 CONT.					

1

FRONT YARD LANDSCAPE TYPICAL

- TYPICAL LANDSCAPE FOR A STANDARD LOT:
- TURF: 30% MINIMUM AND 40% MAXIMUM
 - TREES: 1 2.5" CALIPER SHADE TREE AND EITHER 1 2" CALIPER ORNAMENTAL TREE OR 1 6' EVERGREEN TREE
 - SHRUBS: MINIMUM OF 16 - 5 GALLON CONTAINER SHRUBS

- NOTES:
- ALL FRONT YARD LANDSCAPES SHALL MEET THE MINIMUM PLANT MATERIAL REQUIREMENTS SET BY CITY OF AURORA CODE IN SECTION 146-1450 AND LAID OUT IN TABLE 14.3A-14.3B IN THE LANDSCAPE ORDINANCE.

GENERAL NOTES

- THESE PLANS SHALL NOT BE UTILIZED FOR CONSTRUCTION OR PERMITTING UNLESS STATED FOR SUCH USE IN THE TITLE BLOCK.
- SIGHT TRIANGLES AND SIGHT LINES SHALL REMAIN UNOBSTRUCTED BY EQUIPMENT, CONSTRUCTION MATERIALS, PLANT MATERIAL OR ANY OTHER VISUAL OBSTACLE DURING THE CONTRACT PERIOD AND AT MATURITY OF PLANTS PER LOCAL JURISDICTIONAL REQUIREMENTS. NO PLANT MATERIAL OTHER THAN GROUND COVER IS ALLOWED TO BE PLANTED ADJACENT TO FIRE HYDRANTS AS STIPULATED BY JURISDICTIONAL REQUIREMENTS.
- LOCAL, STATE AND FEDERAL JURISDICTIONAL REQUIREMENTS, RESTRICTIONS OR PROCEDURES SHALL SUPERSEDE THESE PLANS, NOTES AND SPECIFICATIONS WHEN MORE STRINGENT. NOTIFY THE OWNER'S REPRESENTATIVE IF CONFLICTS OCCUR.
- THE OWNER/BUILDER IS RESPONSIBLE FOR ALL FRONT YARD 'ON LOT' LANDSCAPING FOR EACH PARCEL. ALL SIDE YARDS VISIBLE FROM THE STREET ARE REQUIRED TO BE LANDSCAPED. THE LLC IS NOT RESPONSIBLE FOR ANY FRONT YARD 'ON LOT' LANDSCAPE AND THEREFORE IS NOT PART OF THIS SUBMITTAL.
- THIS SHEET SET IS PREPARED WITH INFORMATION SUFFICIENT FOR CITY OF AURORA CSP APPROVAL AND MAY NOT BE SUFFICIENT FOR CONSTRUCTION BIDDING OR AS CONSTRUCTION DOCUMENTS.

CITY OF AURORA NOTES

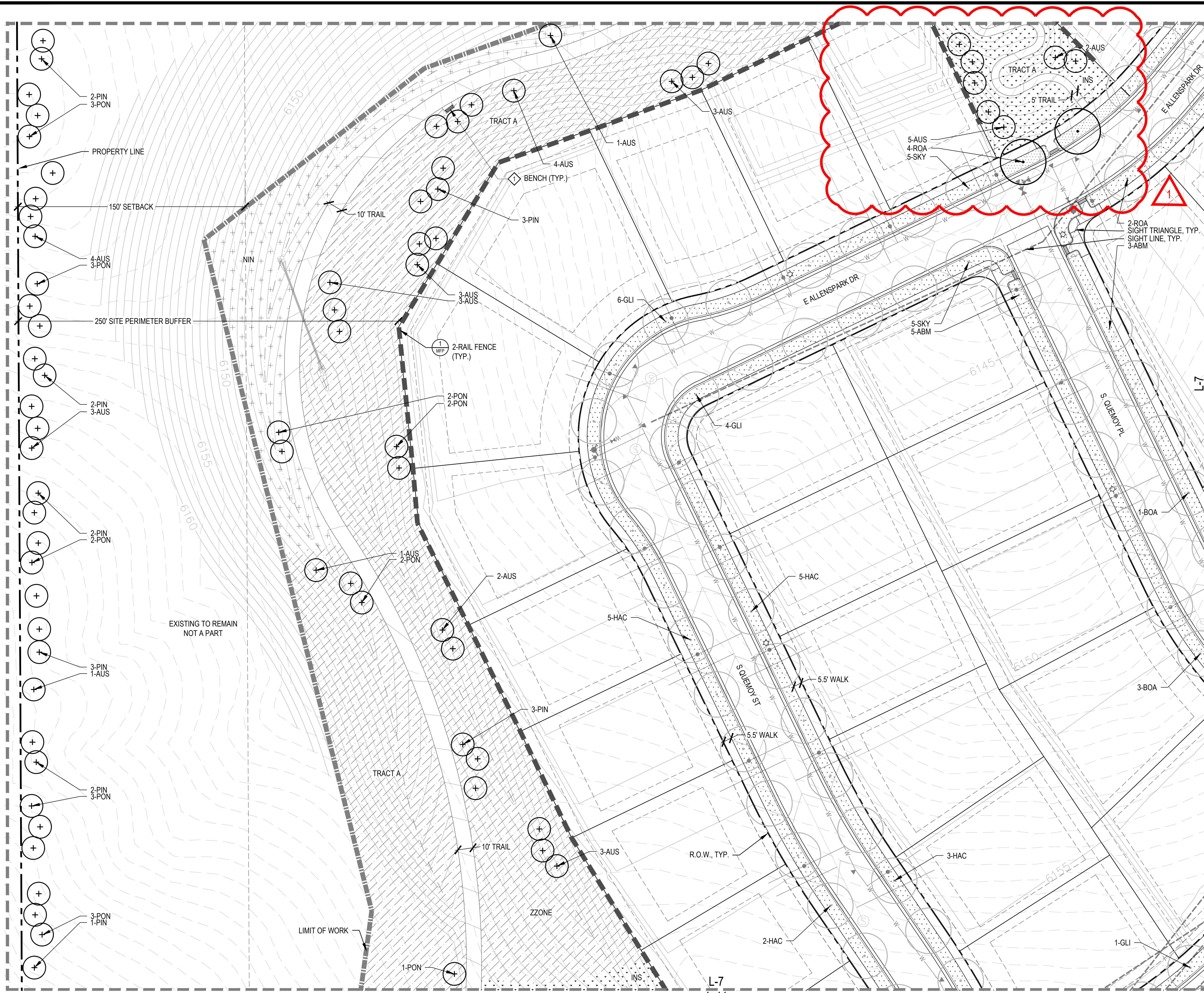
- ALL LANDSCAPED AREAS ARE TO RECEIVE ORGANIC SOIL PREPARATION AT 4 cu.yrds/1,000sf.
- SHRUB BEDS ARE TO BE CONTAINED BY $\frac{3}{8}$ " PERFORATED STEEL EDGER OR SPADE CUT EDGER. IT IS NOT REQUIRED WHEN BED IS ADJACENT TO CURBS, WALLS, OR WALKS.
- ALL FREE STANDING LIGHTS WITHIN THIS PLAN ARE STREETLIGHTS.
- THE SURFACE MATERIAL OF WALKS ARE TO BE LIGHT BROOM FINISHED STANDARD GRAY CONCRETE. VEHICULAR DRIVES, PARKING LOTS AND PLAZAS ARE NOT INCLUDED ON THIS PLAN.
- ALL UTILITY EASEMENTS SHALL REMAIN UNOBSTRUCTED AND FULLY ACCESSIBLE ALONG THEIR ENTIRE LENGTH FOR THE MAINTENANCE EQUIPMENT ENTRY.
- THE OWNER/DEVELOPER, HIS SUCCESSORS AND ASSIGNS, SHALL BE RESPONSIBLE FOR INSTALLATION, MAINTENANCE AND REPLACEMENT OF ALL LANDSCAPING MATERIALS SHOWN OR INDICATED ON THE APPROVED SITE PLAN OR LANDSCAPE PLAN ON FILE IN THE PLANNING DEPARTMENT. ALL LANDSCAPING WILL BE INSTALLED AS DELINEATED ON THE PLAN, PRIOR TO ISSUANCE OF CERTIFICATE OF OCCUPANCY.
- ALL LANDSCAPED AREAS AND PLANT MATERIAL, EXCEPT FOR NON-IRRIGATED NATIVE, RESTORATIVE AND DRYLAND GRASS AREAS THAT COMPLY WITH REQUIREMENTS FOUND IN SEC. 146-1429 AND/OR SEC. 1461435 MUST BE WATERED BY AN AUTOMATIC UNDERGROUND IRRIGATION SYSTEM. IRRIGATION SYSTEM DESIGN, INSTALLATION, OPERATION AND MAINTENANCE SHALL CONFORM TO REQUIREMENTS FOUND IN THE CITY OF AURORA IRRIGATION ORDINANCE.
- LANDSCAPE MATERIAL PLACEMENT SHALL NOT BE PLACED OR KEPT NEAR FIRE HYDRANTS, FIRE DEPARTMENT INLET CONNECTIONS OR FIRE PROTECTION CONTROL VALVES IN A MANNER THAT WOULD PREVENT SUCH EQUIPMENT OR FIRE HYDRANTS FROM BEING IMMEDIATELY DISCERNABLE. THE FIRE DEPARTMENT SHALL NOT BE DETERRED OR HINDERED FROM GAINING IMMEDIATE ACCESS TO FIRE PROTECTION EQUIPMENT OR HYDRANTS.
- A 5-FOOT CLEAR SPACE SHALL BE MAINTAINED AROUND THE CIRCUMFERENCE OF FIRE HYDRANTS.
- LANDSCAPING MATERIAL SHOWN WITHIN THE SITE PLAN CANNOT ENCROACH INTO ROADWAYS THAT ARE DEDICATED (OR DESIGNATED) AS FIRE LANE EASEMENTS (OR CORRIDORS).
- TREES MAY NOT BE PLACED WITHIN 8' OF ANY PUBLIC UTILITY.
- SHRUB BEDS SHALL BE MULCHED WITH 3" DEPTH OF 1 1/2" BLUE RIVER ROCK. FOR AREAS SPECIFIED AS COBBLE, USE 6-12" BLUE RIVER ROCK COBBLE. WEED BARRIER IS REQUIRED UNDER COBBLE AND RIVER ROCK. NO WEED BARRIER IS REQUIRED UNDER WOOD MULCH. COBBLE, AND RIVER ROCK IS AVAILABLE AT PIONEER SAND WWW.PIONEERSAND.COM OR APPROVED EQUAL. AREAS OF PERENNIALS AND ANNUALS TO BE MULCHED WITH 3" DEPTH OF GORILLA HAIR SHREDDED MULCH WITH NO WEED BARRIER NECESSARY.
- ALL PROPOSED LANDSCAPING WITHIN THE SIGHT TRIANGLE SHALL BE IN COMPLIANCE WITH COA ROADWAY SPECIFICATIONS, SECTION 4.04.2.10.
- ALL CROSSINGS OR ENCROACHMENTS BY PRIVATE LANDSCAPE IRRIGATION LINES OR SYSTEMS INTO EASEMENTS AND STREET RIGHTS-OF-WAY OWNED BY THE CITY OF AURORA ARE ACKNOWLEDGED BY THE OWNER AS BEING SUBJECT TO CITY OF AURORA'S USE AND OCCUPANCY OF THE SAID EASEMENTS OR RIGHTS-OF-WAY. THE OWNER, THEIR SUCCESSORS AND ASSIGNS, HEREBY AGREE TO INDEMNIFY THE CITY OF AURORA FOR ANY LOSS, DAMAGE OR REPAIR TO CITY FACILITIES THAT MAY RESULT FROM THE INSTALLATION, OPERATION, OR MAINTENANCE OF SAID PRIVATE IRRIGATION LINES OR SYSTEMS.
- ALL TREES IN SEED OR TURF AREAS SHALL RECEIVE WOOD MULCH RINGS.

CSP AMENDMENT 01: MAY 1, 2020



SHEET TITLE:
PLANT LIST AND
NOTES
SHEET NUMBER:
L-2
NOT FOR
CONSTRUCTION

CHECKED BY: SM
DRAWN BY: TDDR



- LEGEND**
- PROPERTY LINE
 - STEEL EDGER (LD-1, DETAIL 4)
 - 2 RAIL FENCE (MFP, DETAIL 1)
 - LIMITS OF WORK (L.O.W.)
 - MATCHLINE
 - MT MANICURED TURF
 - HOME BUILDER TREE LAWN TURF
 - IN 100% IRRIGATED NATIVE GRASS SEED MIX "A" DRILLED SEED
 - ZZONE Z-ZONE NATIVE GRASS SEED MIX "A" DRILLED SEED
 - NIN NON-IRRIGATED NATIVE GRASS SEED MIX "A"
 - WF 100% IRRIGATED WILDFLOWER AND NATIVE SEED MIX
 - COBBLE
 - PERENNIALS (LD-1, DETAIL 3)
 - CRUSHER FINES (L-15, DETAIL T-2.0)
 - DECIDUOUS CANOPY TREE (LD-1, DETAIL 1)
 - HOME BUILDER DECIDUOUS CANOPY TREE
 - ORNAMENTAL TREES (LD-1, DETAIL 1)
 - LARGE EVERGREEN TREES (LD-1, DETAIL 1)
 - DECIDUOUS SHRUBS (LD-1, DETAIL 2)
 - EVERGREEN SHRUBS (LD-1, DETAIL 2)
 - ORNAMENTAL GRASSES (LD-1, DETAIL 3)
 - FIRE HYDRANT (RE: CIVIL)
 - STREET LIGHT (RE: CIVIL)
 - DOG STATION (LD-2, #7)
 - INTERPRETIVE SIGNAGE (LD-2, #8)
 - BIKE RACKS (LD-2, #3)

NOTE:
1. FINAL STREET TREE PLACEMENT SUBJECT TO DRIVEWAY LOCATION, STOP SIGNS, STREET LIGHTS & UTILITY/SERVICE LOCATIONS - PER HOME BUILDER. HOME BUILDER TREES TO BE PLACED NO CLOSER THAN 5' AWAY FROM METER AND METER SERVICE LINES.
2. THE LANDSCAPING SHOWN ALONG THE NORTHERN AND WESTERN PROPERTY LINE MUST BE INSTALLED AS PART OF CSP 10'S LANDSCAPE REQUIREMENTS AND INSTALLED PRIOR TO THE FINAL CERTIFICATE OF OCCUPANCY.

NORTH

SCALE: 1"=30'

Know what's below.
Call before you dig.

KEY MAP

SHEET TITLE:
LANDSCAPE PLAN

SHEET NUMBER:
L-7

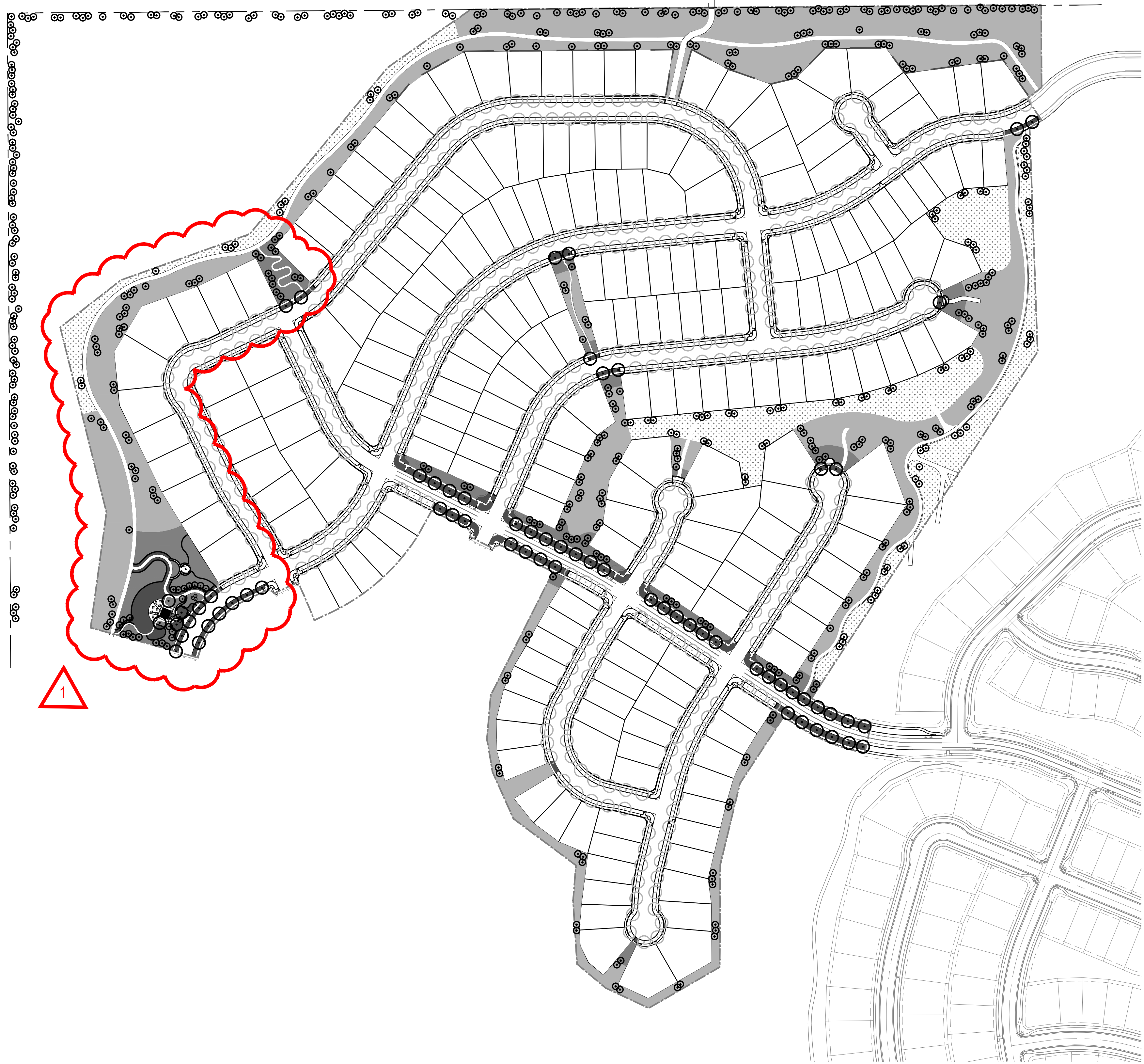
NOT FOR CONSTRUCTION

CSP AMENDMENT 01: MAY 1, 2020

NORRIS DESIGN
Planning | Landscape Architecture | Project Promotion

1101 Bannock Street
Denver, Colorado 80204
P 303.892.1166
F 303.892.1186
www.norris-design.com

HYDRO-ZONE MAP



LEGEND

- LIMITS OF WORK
- HIGH WATER USE: MANICURED TURF
 - LOW WATER USE: SHRUB BED AND IRRIGATED NATIVE SEED
 - Z-ZONE NATIVE SEED
 - NON IRRIGATED NATIVE SEED AREA
 - DECIDUOUS CANOPY TREE:
 - ORNAMENTAL TREES:
 - EVERGREEN TREES

HYDRO-ZONE TABLES

TAP TBD PERMANENT TAP

WATER USE TYPE	AREA (SF)
HIGH WATER USE	45,502 SF
LOW WATER USE	67,755 SF
Z-ZONE*	430,990 SF

	QUANTITY	AREA VALUE (SF)	TOTAL AREA
CANOPY TREES	0	706	0 SF
EVERGREEN/ORNAMENTAL TREES	446	177	78,942 SF
TOTAL			

TOTAL IRRIGATED AREA TAP TBD 623,189 SF

*NOTE: Z-ZONE NATIVE SEED TO BE ON SEPARATE TEMPORARY VALVE THAT WILL BE SHUT OFF AFTER 2 YEARS.



Know what's below.
Call before you dig.

SHEET TITLE:
HYDRO-ZONE
MAP

SHEET NUMBER:
H2M

NOT FOR
CONSTRUCTION

CSP AMENDMENT 01: MAY 1, 2020

NORRIS DESIGN
Planning | Landscape Architecture | Project Promotion

1101 Bannock Street
Denver, Colorado 80204
P 303.892.1166
F 303.892.1186
www.norris-design.com