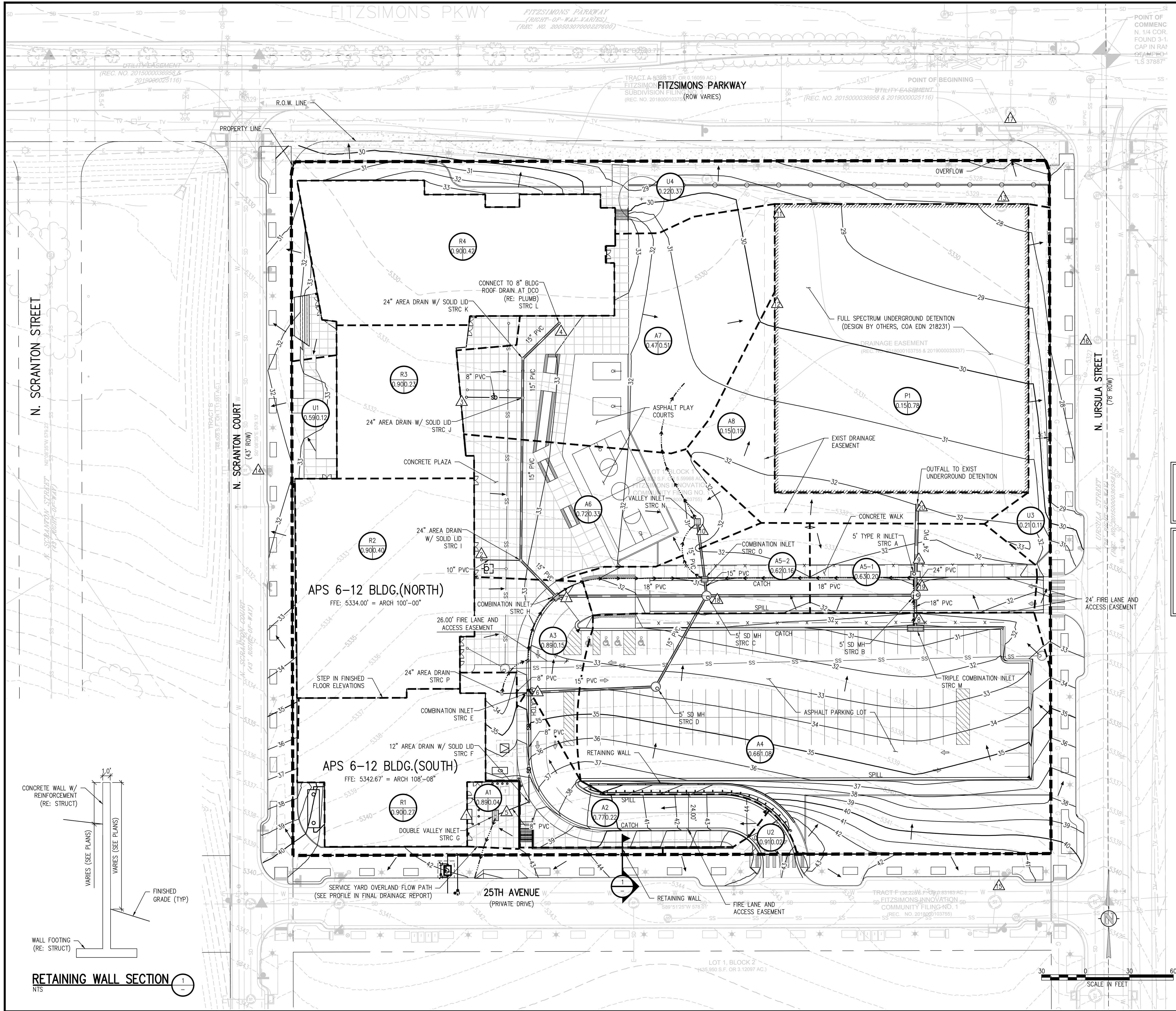
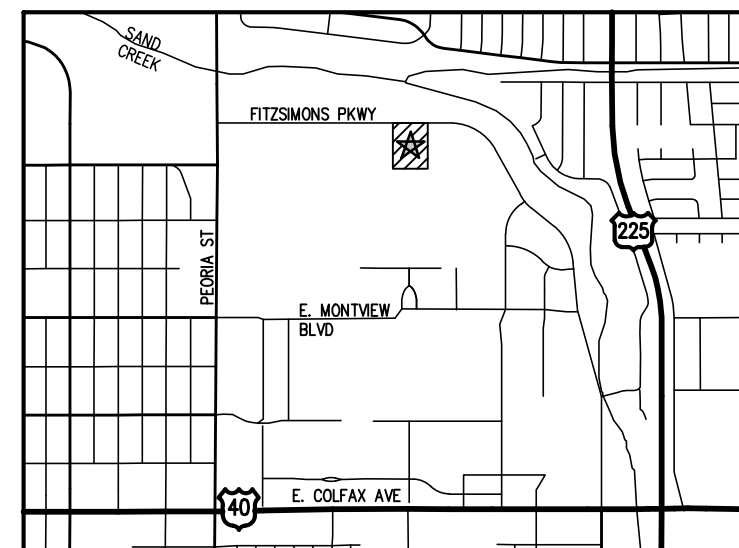


Q:\2708c\Drawings\2708c-01-20F-00.dwg, 6/23/2020 - 6:12 PM, WTP



DRAINAGE MAP LEGEND

- EXISTING INDEX CONTOUR
- EXISTING INTERMEDIATE CONTOUR
- PROPOSED INDEX CONTOUR
- PROPOSED INTERMEDIATE CONTOUR
- EXISTING SPOT ELEVATION
- PROPOSED SPOT ELEVATION
- SITE WALL
- EMERGENCY OVERFLOW PATH
- PROPERTY LINE
- R.O.W. LINE
- DEVELOPED DRAINAGE BASIN BOUNDARY (MAJOR BASIN)
- DEVELOPED DRAINAGE BASIN BOUNDARY (SUB BASIN)
- DIRECTION OF FLOW (HISTORIC)
- DIRECTION OF FLOW (DEVELOPED)
- BASIN DESIGN POINT
- DRAINAGE BASIN IDENTIFICATION BUBBLE
 - A = DEVELOPED BASIN DESIGNATION
 - .50 = 100-YR RUNOFF COEFFICIENT
 - 1.0 = AREA ACRES



VICINITY MAP

NTS

BENCHMARK

CITY OF AURORA BENCHMARK KNOWN AS 3S6736NW001 (OLD REFERENCE NAME 05-020B), BEING A 3" DIAMETER BRASS CAP STAMPED "C.O.A. BM, 5-20B" ON THE NORTHEAST CORNER OF A 20 FT. WIDE TYPE R STORM INLET AT THE SOUTHEAST CORNER OF PEORIA STREET AND FITZSIMONS PARKWAY HAVING A PUBLISHED ELEVATION OF 5343.56" (NAVD 88 DATUM).

NOTES:

- ALL STORM SEWER SHOWN IS PRIVATE.
- STORM SEWER PIPES ARE SIZED FOR THE 100-YEAR STORM.
- CITY OF AURORA PLAN REVIEW IS ONLY FOR GENERAL CONFORMANCE WITH CITY OF AURORA DESIGN CRITERIA AND THE CITY CODE. THE CITY IS NOT RESPONSIBLE FOR THE ACCURACY AND ADEQUACY OF THE DESIGN, OF DIMENSIONS AND ELEVATIONS WHICH SHALL BE CONFIRMED AND CORRELATED AT THE JOB SITE. THE CITY OF AURORA, THROUGH THE APPROVAL OF THIS DOCUMENT, ASSUMES NO RESPONSIBILITY FOR THE COMPLETENESS AND/OR ACCURACY OF THIS DOCUMENT.

SUMMARY PROPOSED RUNOFF TABLE

BASIN	DESIGN POINT	AREA (ACRES)	C ₁₀₀	100-YR RUNOFF (CFS)
R1	1	0.27	0.90	2.16
R2	2	0.40	0.90	3.19
R3	3	0.23	0.90	1.78
R4	4	0.42	0.90	3.52
A1	5	0.04	0.89	0.29
A2	6	0.22	0.77	1.49
A3	7	0.15	0.89	1.21
A4	8	1.08	0.66	5.74
A5-1	9	0.20	0.63	1.06
A5-2	18	0.16	0.62	0.85
A6	10	0.33	0.72	1.87
A7	11	0.51	0.47	1.59
A8	12	0.19	0.15	0.19
U1	14	0.12	0.59	0.61
U2	15	0.02	0.91	0.18
U3	16	0.11	0.21	0.18
U4	17	0.37	0.22	0.50
TOTAL ROUTED TO REGIONAL DETENTION POND				22.63 CFS
TOTAL UNDETAINED				1.22 CFS

UNDERGROUND DETENTION (DESIGN BY OTHERS)	
MAX 100YR RELEASE RATE (CFS)	7.14

Approved For One Year From This Date

CITY ENGINEER	DATE
WATER DEPARTMENT	DATE

JVA, Inc. 1319 Spruce Street
Boulder, CO 80302 303.444.1951
www.jvaja.com
Boulder • Fort Collins • Winter Park
Glenwood Springs • Denver

NO.	DATE	DESIGNED	DRAWN	DESCRIPTION

DESIGNED BY: CFG
DRAWN BY: SMB/WTP
CHECKED BY: CRH
JOB #: 2708c
DATE: 06.24.2020

AURORA PUBLIC SCHOOLS 6-12 AST
FITZSIMONS INNOVATION COMMUNITY FILING NO. 1
LOT 1, BLOCK 1

PRELIMINARY DRAINAGE PLAN

SHEET NO.
C40