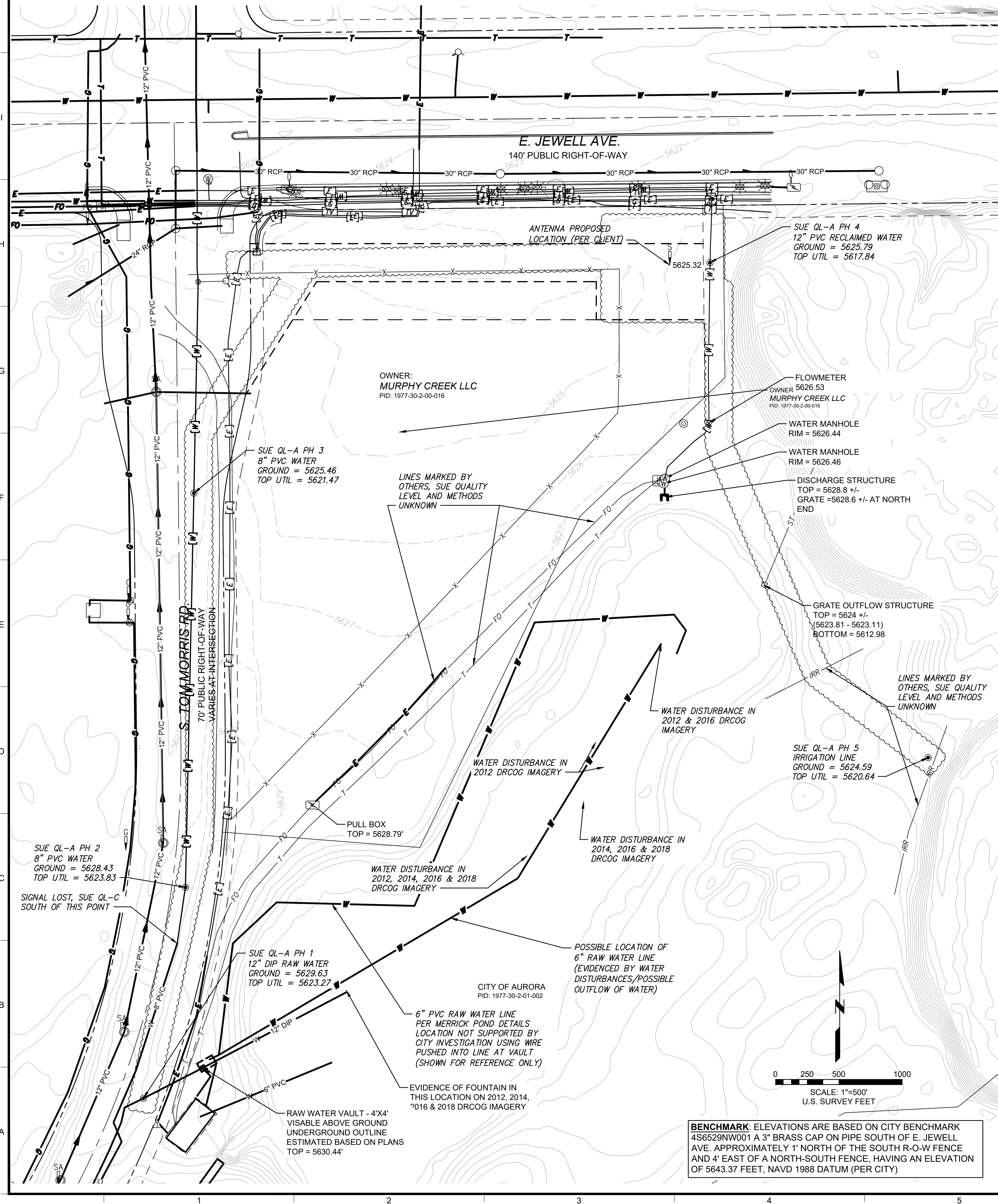


EXISTING UTILITY EXHIBIT

PART OF THE NW 1/4 SECTION 30, TOWNSHIP 4 SOUTH, RANGE 65 WEST, 6TH PRINCIPAL MERIDIAN,
CITY OF AURORA, ARAPAHOE COUNTY, COLORADO



LEGEND

- = POWER HANDHOLE
- = POWER PEDESTAL
- = POWER TRANSFORMER
- = STREET LIGHT
- = FIBER OPTIC WARNING POST
- = FIBER OPTIC VAULT / HANDHOLE
- = GAS WARNING POST
- = GAS METER
- = GAS VALVE
- = MONITORING WELL
- = SIGN
- = IRRIGATION HANDHOLE / SPRINKLER CONTROL BOX
- = COMMUNICATION HANDHOLE
- = COMMUNICATION PEDESTAL
- = WATER PIPELINE WARNING POST
- = WATER CONTROL HANDHOLE
- = WATER MAINTENANCE HOLE / VAULT
- = WATER VALVE
- = CABLE TV LINE, QL-B
- = ELECTRIC LINE, QL-B
- = ELECTRIC LINE, QL-C
- = FIBER OPTIC LINE, QL-B
- = FIBER OPTIC LINE, QL-C
- = GAS LINE, QL-B
- = GAS LINE, QL-C
- = SANITARY SEWER LINE
- = STORM SEWER LINE
- = TELEPHONE/COMMUNICATION LINE, QL-B
- = TELEPHONE/COMMUNICATION LINE, QL-C
- = WATERLINE, QL-B
- = WATERLINE, QL-C
- = SUE LIMITS

SUE QUALITY LEVEL A - DAYLIGHT BORINGS (POTHOLES)								
POTHOLE	GROUND	NORTHING	EASTING	TOP OF UTILITY	SIZE	TYPE	MATERIAL	NOTES
1	5629.72	1673976.13	3222431.89	5623.27	12"	RAW WATER	DIP	SIZE AND TYPE PER AURORA MAPS
2	5628.43	1674142.91	3222465.04	5623.83	8"	WATER	PVC	SIZE AND TYPE PER AURORA MAPS
3	5625.46	1674453.42	3222471.67	5621.47	8"	WATER	PVC	SIZE AND TYPE PER AURORA MAPS
4	5625.79	1674635.13	3222878.33	5617.84	12"	RECLAIMED WATER	PVC	SIZE AND TYPE PER DESIGN PLANS
5	5624.59	1674244.85	3223050.91	5620.64		IRRIGATION		SIZE AND TYPE UNKNOWN

SUBSURFACE UTILITY ENGINEER'S CERTIFICATE

A PRAGMATIC EFFORT HAS BEEN MADE TO SYSTEMATICALLY DESIGNATE AND DEPICT BURIED UTILITIES WITHIN THE CORRIDOR TO THE EXTENT PRACTICAL FOR THE AUTHORIZED PROJECT BUDGET. THESE PLANS ARE FOR DESIGN PURPOSES ONLY AND REFLECT SUBSURFACE UTILITY CONDITIONS AT THE TIME SURVEYED. EXISTING UTILITY LOCATIONS DEPICTED ON THE PLANS DO NOT SUPERSEDE COLORADO STATE ONE CALL DEMARCATIONS OF BURIED UTILITIES OR RELIEVE THE CONTRACTOR FROM THE LEGAL REQUIREMENT TO CALL ONE CALL TWO WORKING DAYS PRIOR TO CONSTRUCTION. FARNSWORTH GROUP, KINETIC ENERGY SYSTEMS, AND BLACK & VEATCH SHOULD BE NOTIFIED OF ANY DISCREPANCIES BETWEEN THE UTILITY DESIGNATING / LOCATING SURVEY AND ONE CALL MARKINGS, AND THE CONTRACTOR SHALL USE CAUTION UNTIL DISCREPANCIES ARE RESOLVED. EXISTING UTILITIES ARE LOCATED TO A QUALITY LEVEL B, EXCEPT WHERE NOTED HEREIN, ACCORDING TO ASCE 38-02.

CONTRACTOR SHALL CALL THE UTILITY NOTIFICATION SERVICE BEFORE EXCAVATING AS REQUIRED BY LAW.

I HEREBY CERTIFY THAT THIS UTILITY SUBSURFACE UTILITY ENGINEERING PLAN WAS PREPARED UNDER MY DIRECT SUPERVISION AND IT ACCURATELY DEPICTS THE KNOWN SUBSURFACE UTILITY CONDITIONS AND THAT I AM A DULY LICENSED PROFESSIONAL ENGINEER UNDER THE LAWS OF THE STATE OF COLORADO

RYAN M. BANDY, PE
LICENSE NUMBER 59626



SURVEYOR'S CERTIFICATE

I HEREBY CERTIFY THAT THE UTILITY SURVEY AND LOCATION OF EXISTING IMPROVEMENTS WAS PERFORMED UNDER MY DIRECT PERSONAL SUPERVISION AND THAT I AM A DULY LICENSED PROFESSIONAL SURVEYOR UNDER THE LAWS OF THE STATE OF COLORADO.

FREDRICK L. EASTON, JR., PLS
LICENSE NUMBER 37948



SUBSURFACE UTILITY ENGINEERING (SUE) NOTES:

- THIS SURVEY INCLUDES INFORMATION TO SUPPORT THE CREATION OF A DESIGN PLANS DEPICTING EXISTING UTILITIES AND PROPOSED EXCAVATIONS. PREPARED UNDER THE RESPONSIBLE CHARGE OF A LICENSED PROFESSIONAL ENGINEER.
- UTILITY RESEARCH WAS PERFORMED PER ASCE 38-02 SUE QUALITY LEVEL D (QL-D) SPECIFICATIONS. THIS INCLUDED CONTACTING COLORADO 811 FOR A LIST OF KNOWN UTILITIES IN THE AREA, MAKING A SURFACE REVIEW OF THE SITE FOR EVIDENCE OF OTHER UTILITIES, AND CONTACTING ANY APPARENT UTILITY OWNERS. UTILITY SYSTEM MAPS, GIS DATA, AND ORAL EVIDENCE OF UTILITIES WAS OBTAINED FOR ALL FOUND EVIDENCE OF UTILITIES AND KNOWN SERVICES TO ADJACENT PROPERTIES.
- ALL UNDERGROUND UTILITY LINES DEPICTED WITH [] LINSTYLE AS DEPICTED IN THE LEGEND ARE QUALITY LEVEL B (QL-B) EXCEPT FOR THOSE DEPICTED IN THINNER LINSTYLE AND AS NOTED BELOW:
 - ALL STORM AND SANITARY SEWERS ARE QUALITY LEVEL A (QL-A) AT MANHOLES THAT COULD BE MEASURED WITHOUT ENTRY AND HAVE NOTED INVERT ELEVATIONS.
 - ALL STORM AND SANITARY LINES BETWEEN MANHOLES ARE QUALITY LEVEL C (QL-C).
 - IRRIGATION LINES COULD NOT BE LOCATED
- WHILE THERE IS NO EVIDENCE OF ANY UNKNOWN UTILITIES, CAUTION SHOULD BE USED BY CONTRACTOR WHEN EXCAVATING WITHIN PROJECT AREA. GROUND PENETRATING RADAR AND OTHER DETECTION METHODS WHICH DO NOT REQUIRE TRACING OF UTILITIES HAS NOT BEEN ATTEMPTED AT THIS TIME.
- SUE IS LIMITED PROPOSED EXCAVATION ALONG PIPELINE ROUTE AND AT PROPOSED VAULT.
- QUALITY LEVEL A UTILITY EXCAVATIONS WERE PERFORMED BY OTHERS AS DIRECTED BY CITY OF AURORA STAFF ON A LIMITED NUMBER OF UTILITIES AS SHOWN HEREON. FARNSWORTH CREWS WERE PRESENT TO VERIFY FINDINGS.

I:\reston | 4/20/2020\0200898.00 - Murphy Creek Vault\Survey\07 Drawings\SV-0200898-SUE.dwg | 3/29/2022 9:20 AM |