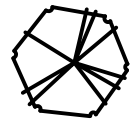
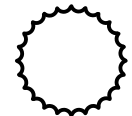


LEGEND



EXISTING TREE TO BE REMOVED



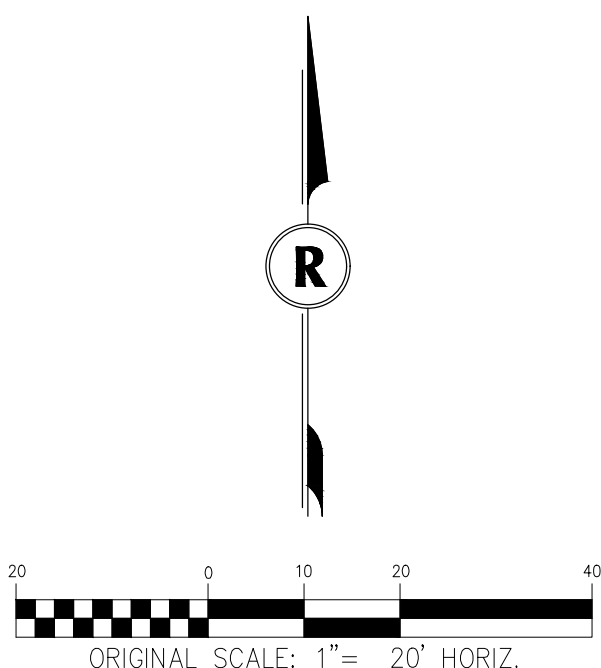
EXISTING TREE TO REMAIN

Any trees that are preserved on the site during construction activities shall follow the standard details for Tree Protection per the current Parks, Recreation & Open Space Dedication and Development Criteria manual. Parks, Recreation & Open Space Dedication and Development Criteria manual. These notes shall be added to the plan.

Please show a tree mitigation chart on the landscape plan taken from the Landscape Manual page 29. If payment will be made into the Tree Planting Fund, add another column to the chart indicating the payment amount that will be made. If trees will be planted on the site, please show a symbol indicating trees that are specific to tree mitigation.

NOTES HAVE BEEN ADDED. -RICK

TREE MITIGATION CHART HAS BEEN ADDED. -RICK



REVISIONS		DATE:
NO.	DESCRIPTION	

SCALE: 1" = 20'
DATE: 03/06/2020
DRAWN BY: KR
CHECKED BY: KN
JOB NO: 1243

ITIG TR
PLA

DRAWING NAME
SHEET NO. OF



ORIGINAL SCALE: 1"= 20' HORIZ.

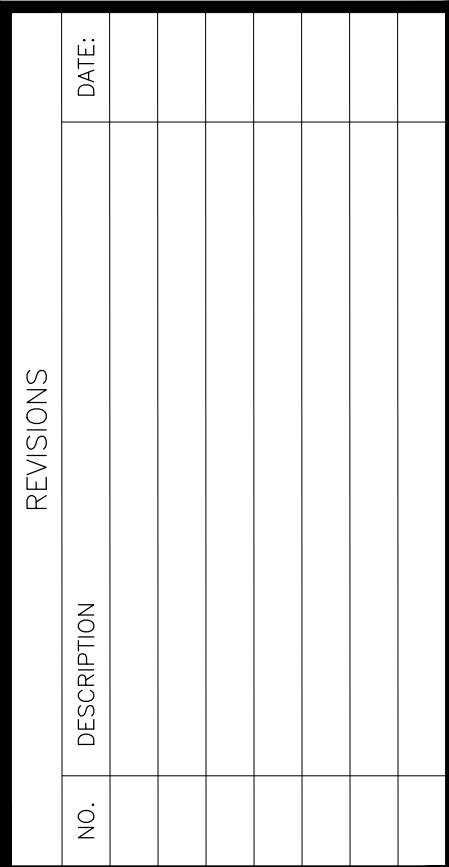
NOTE: 1. PREVIOUSLY APPROVED PLAN 08-09-00 SHOWS TREES IN LOCATIONS THAT WILL NOT BE ABLE TO BE LOCATED DUE TO LOCATION OF NEW FEATURES I.E. SIDEWALKS AND UTILITY LINES. THIS PLAN SHOWS THE ORIGINAL LOCATION OF PREVIOUSLY APPROVED TREES AND THE LOCATION OF NEWLY PROPOSED TREES FOR THE CURRENT PLAN. 2. NEW SHADE STRUCTURE IN LIEU OF PREVIOUSLY APPROVED PLAY AREA WITH SWING SET AND GYM PLAY.

RICK
ENGINEERING COMPANY

5690 WEBSTER ST
ARVADA, CO 80002
303.423.6036

Tucson • San Diego • Riverside • Orange • Denver
Sacramento • San Luis Obispo • Phoenix • Las Vegas

rickengineering.com



LA□D□CAP□
PLA□

DRAWING NAME	
SHEET NO.	<input type="text"/> <input type="text"/> OF <input type="text"/> <input type="text"/>

GENERAL LANDSCAPE NOTES

1.

LANDSCAPE INSTALLATION SHALL BE COMPLETED PRIOR TO ISSUANCE OR CERTIFICATE OF OCCUPANCY.
2.

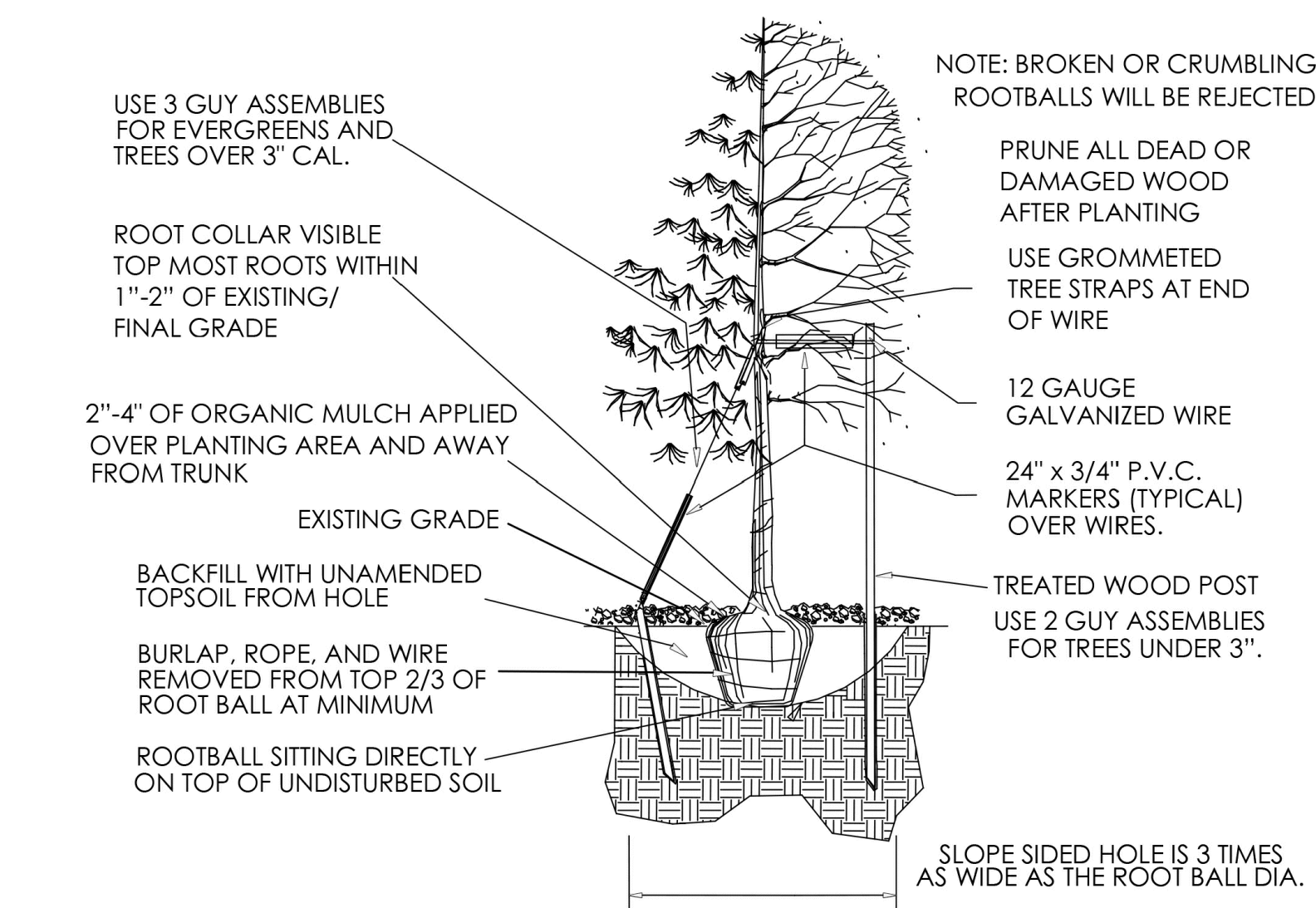
ROUGH MULCH FOR SOIL PREPARATION SHALL BE A MIXTURE OF 25% SHEEP MANURE AND 75% MOUNTAIN PEAT AND SHALL CONTAIN A MINIMUM OF 50% ORGANIC MATTER. ROUGH MULCH SHALL BE ROTOTILLED IN AT A RATE OF 5 CU. YDS./1000 S.F. WITHIN THE SOD LIMITS. MULCH SHALL BE TILLED TO A DEPTH OF 8".
3.

FERTILIZER SHALL BE OF COMPOSITION COMMONLY KNOWN AS 10-40-0 "TREBLE-SUPER-PHOSPHATE". FERTILIZER SHALL BE APPLIED UNIFORMLY OVER THE ENTIRE AREA TO BE SODDED AT A RATE OF 20 LBS./1000 S.F.
4.

ALL AREAS TO BE WATERED WITH AN AUTOMATIC IRRIGATION SYSTEM, ZONED FOR A BUBBLER SYSTEM IN SHRUB AREAS.
5.

SIDEWALKS TO BE CONCRETE AND PARKING AREAS TO BE ASPHALT.
6.

SHRUBBERY OF LOW PROFILE SHALL BE INSTALLED UNDER WINDOWS AND AT ENTRANCES OF UNITS. ADDITIONALLY ONLY LOW PROFILE SHRUBS SHALL BE USED AT THE INTERSECTION OF LAREDO STREET AND EAST 16TH STREET.



NOTE: EVERGREEN TREES: STAKE AND GUY AS SHOWN USING 3 STAKES AROUND TREES-NO SPRAYING OR WRAPPING.

DECIDUOUS TREES: SPRAY TRUNK WITH INSECTICIDE THEN WRAP TRUNK WITH 4" TREE WRAP FROM BOTTOM UP TO SECOND BRANCH. SECURE TAPE MINIMUM 5 PLACES.

DOUBLE STRAND 10 OR 12 GAUGE WIRE THROUGH HOSE AROUND TRUNK TO POST AND TWIST TAUT.

8" STEEL POST EACH SIDE 180 DEGREES WITH BLADE ON TREE SIDE FOR DECIDUOUS TREES, 3" STEEL POSTS ON THREE SIDES 120 DEGREES FOR EVERGREENS.

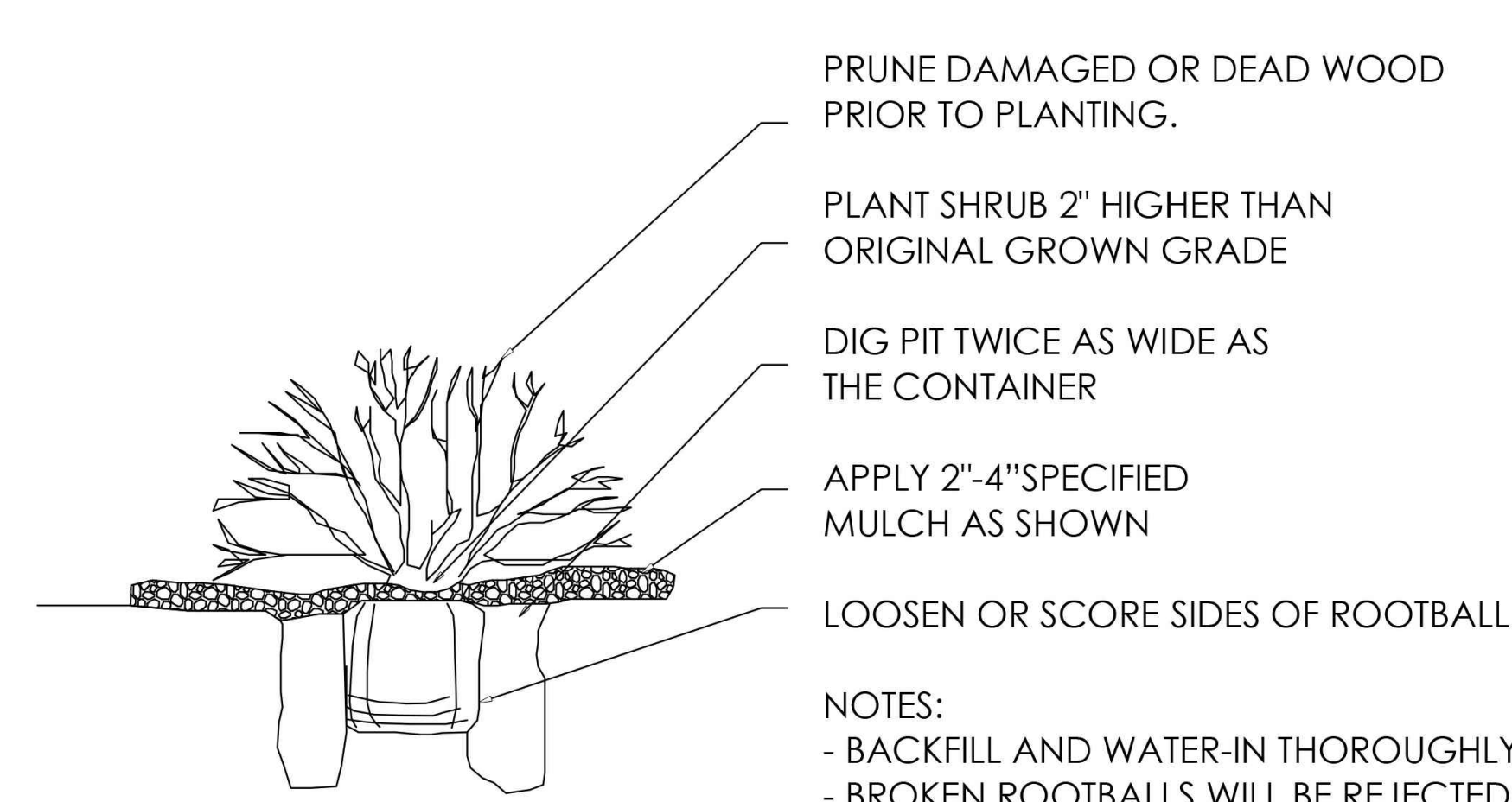
PEA GRAVEL SUMP BOTTOM OF PLANT PIT.

BACKFILL MIX: 2/3 ON SITE SOIL 1/3 FROM PIT 1/2 MOUNTAIN PEAT MIX THOROUGHLY BEFORE BACK FILLING.

NOTE: DETAIL IS TYPICAL IN INTENT ONLY. CONTRACTOR SHALL ADJUST HIS WORK AS NECESSARY TO ACCOMMODATE PLANTINGS IN ALL CONDITIONS. CONSULT WITH OWNER.

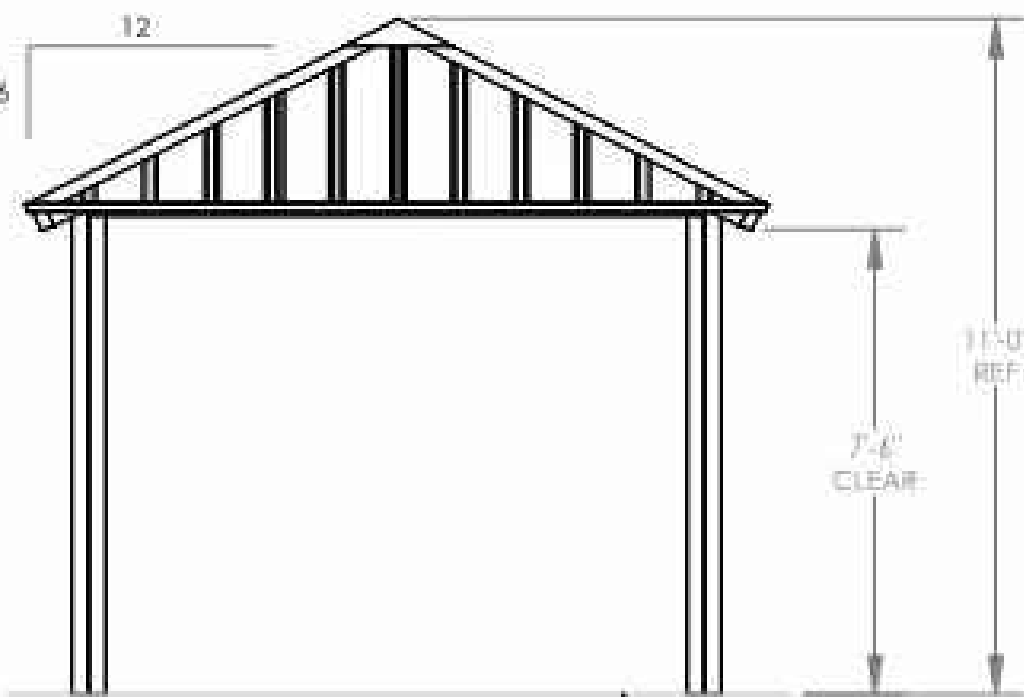
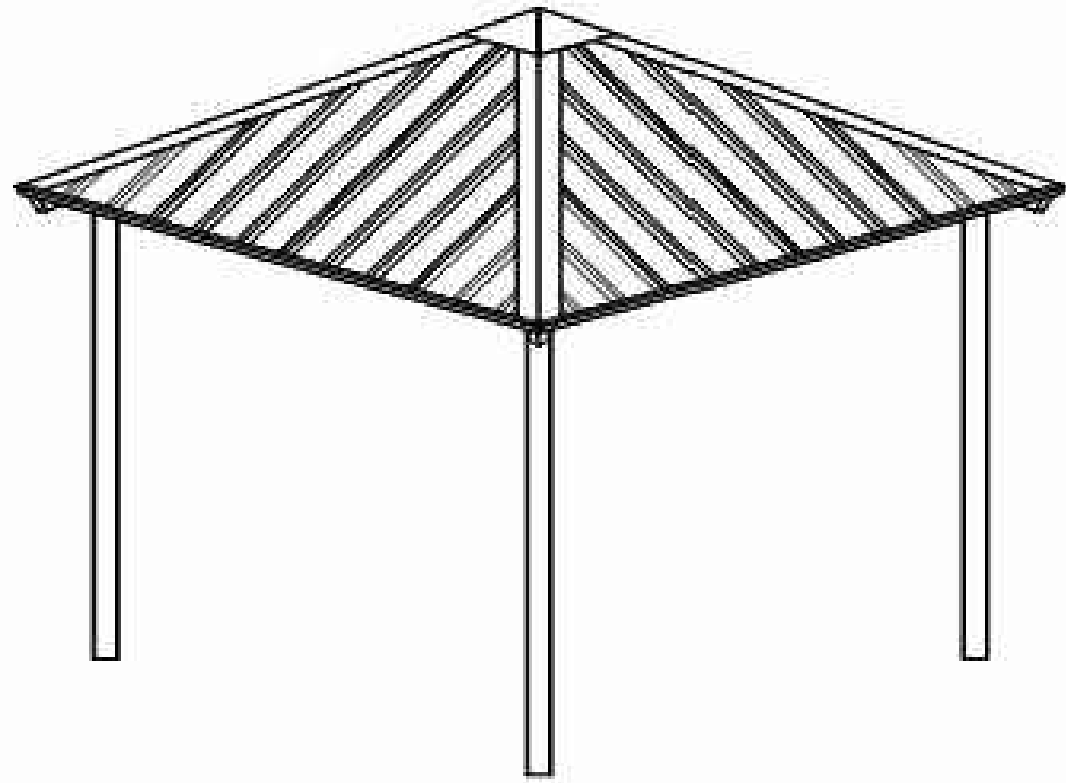
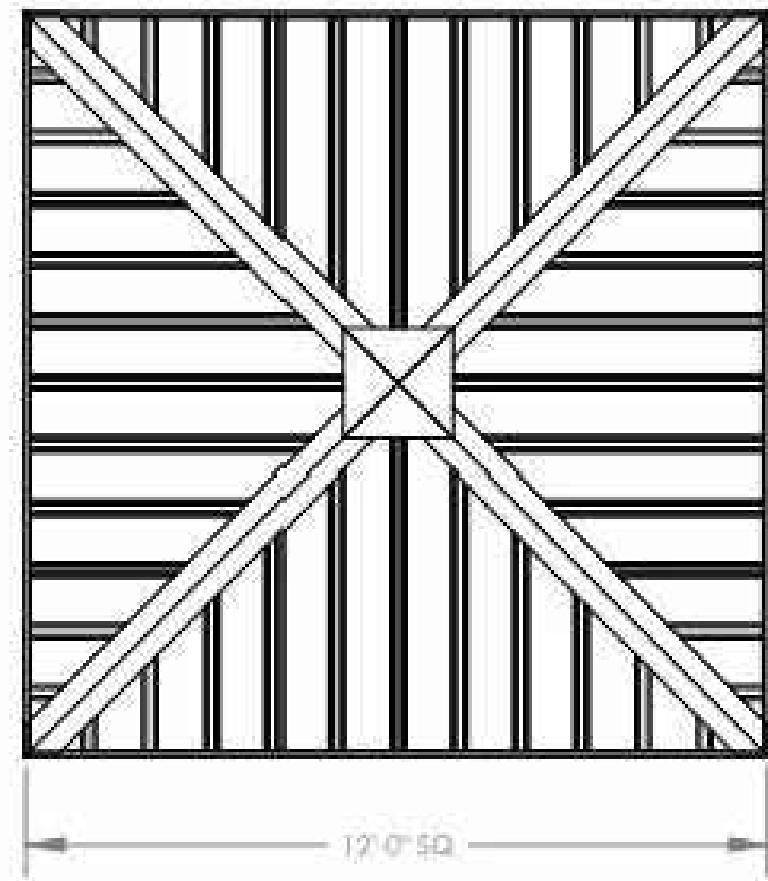
TREE DETAIL

NTS



SHRUB DETAIL

NTS



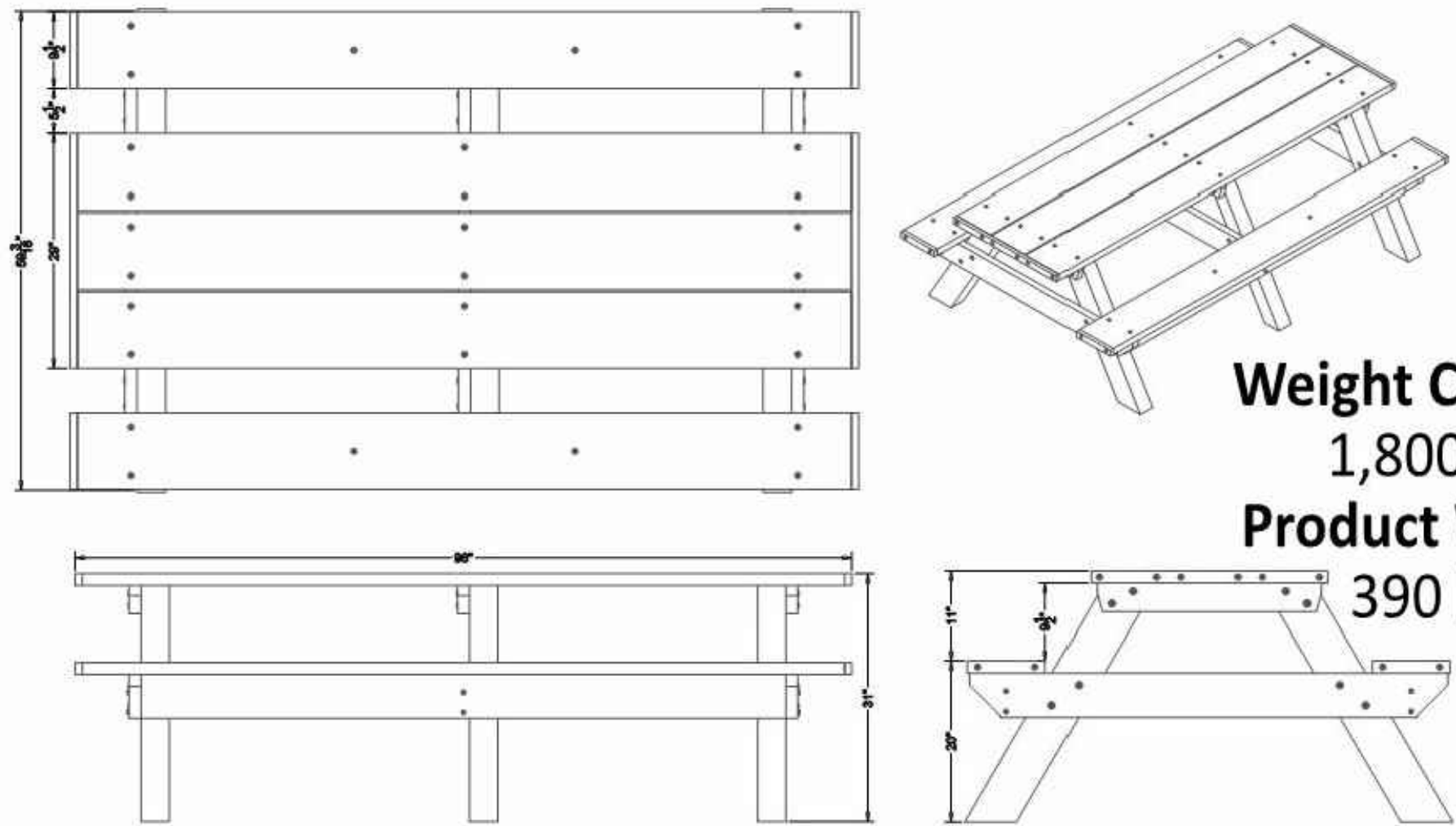
FINISH GRADE. MOUNTING VARIES BASED ON ENGINEERING REQUIREMENTS.

MANUFACTURER: POLIGON
OR APPROVED EQUAL
MODEL: SQR-12
ROOF TYPE: MULTIRIB
ROOF COLOR: EVERGREEN
FRAME COLOR: SURREY BEIGE

NEW PROPOSED SHADE STRUCTURE DETAIL

IN LIEU OF PREVIOUSLY APPROVED PLAY AREA

NTS



MANUFACTURER: POLY PRODUCTS
OR APPROVED EQUAL
MODEL: ASM-SPT2HA
ROOF TYPE: MULTIRIB
TABLE FRAME: BLACK
PLANK COLOR: CEDAR

NEW PROPOSED PICNIC TABLE DETAIL

NTS

IT PLAMDMT

HIGHLIILLAG
T
HMM
CITAIRRA

RICK
ENGINEERING COMPANY

5690 WEBSTER ST
ARVADA, CO 80002
303.423.6036
Tucson - San Diego - Riverside - Orange - Denver
Sacramento - San Luis Obispo - Phoenix - Las Vegas
rickengineering.com



Know what's below.
Call before you dig.

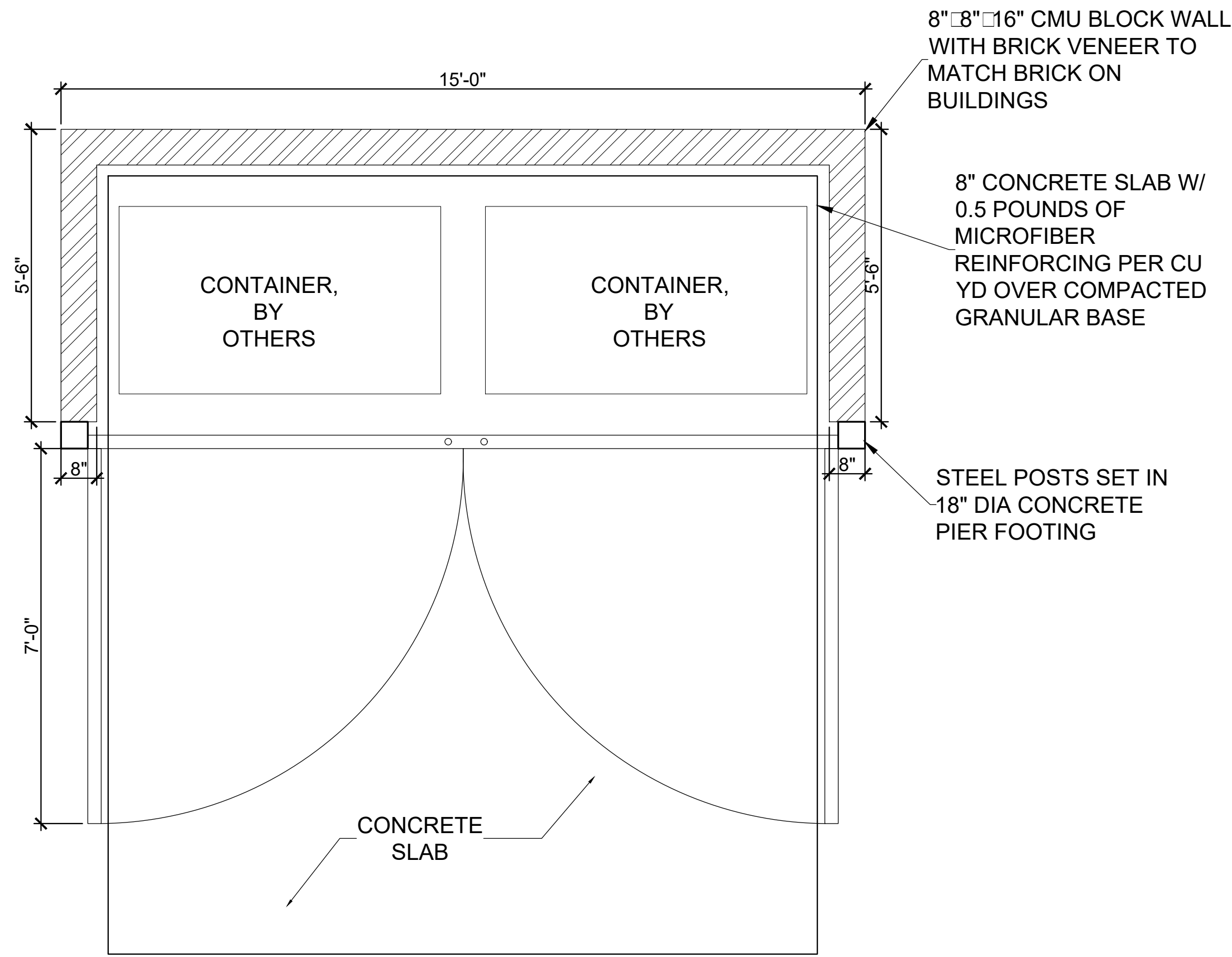
NO.	DESCRIPTION	REVISIONS	DATE:

SCALE: 1" = 20'
DATE: 03/06/2020
DRAWN BY: KR
CHECKED BY: KN
JOB NO: 1243

LA D CAP
D TAIL

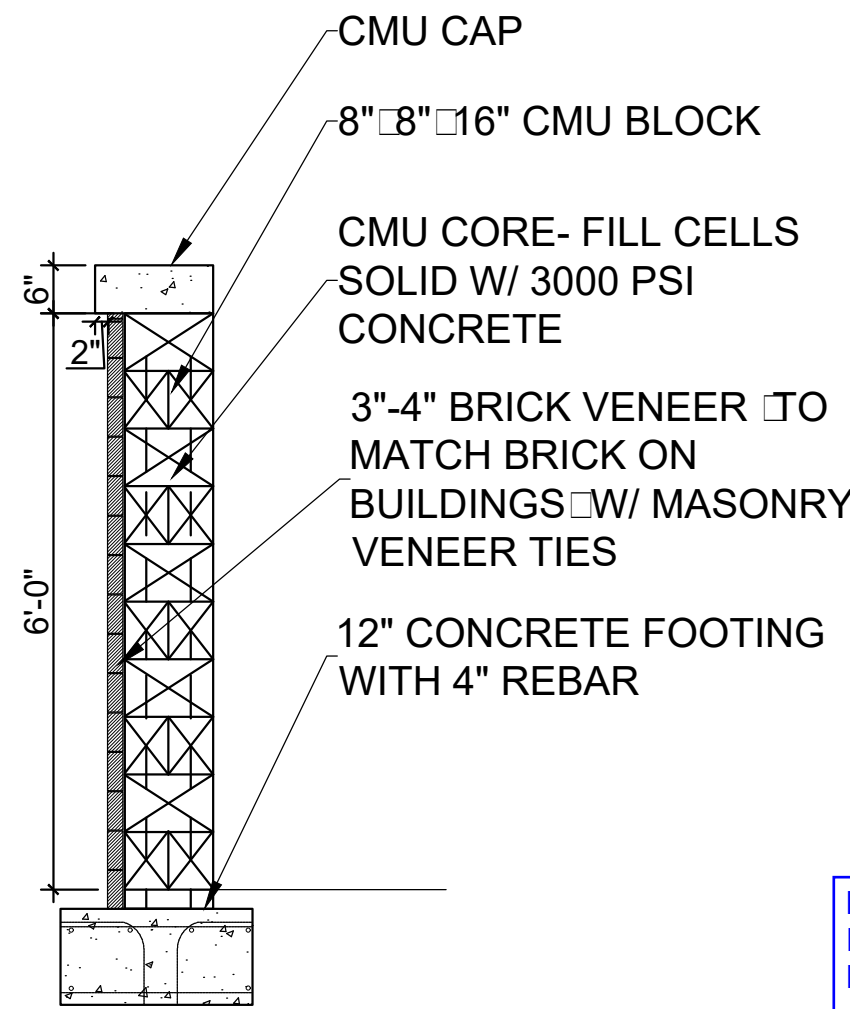
DRAWING
NAME

SHEET NO. OF



TRASH ENCLOSURE PLAN VIEW

NTS



TRASH ENCLOSURE DETAIL

NTS

RETAINING WALL HAS BEEN ADDED ON THE FENCING SHEET -RICK

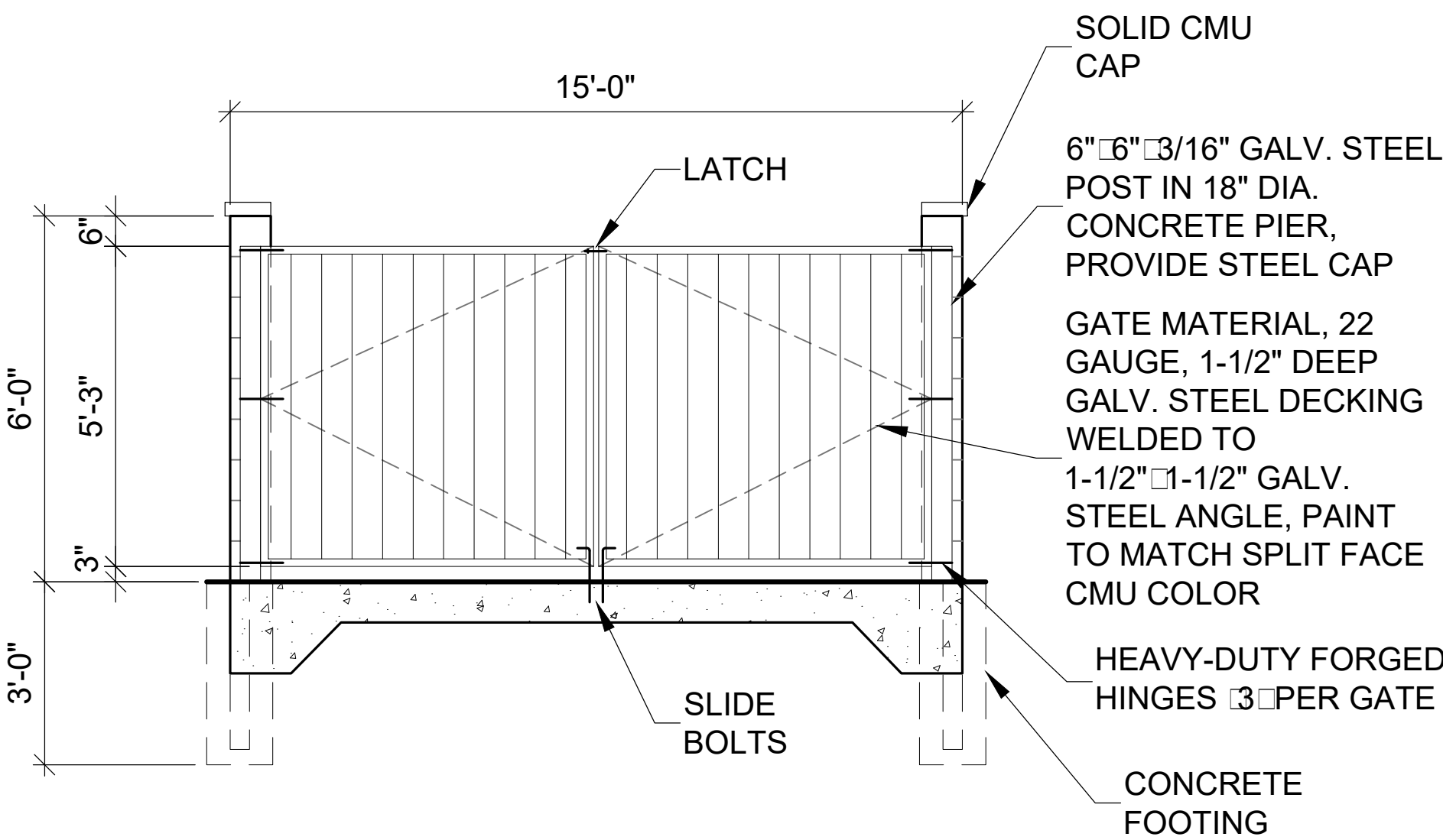
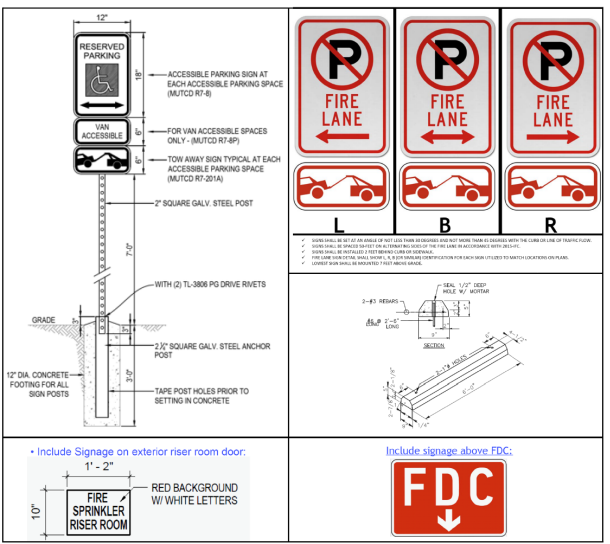
Include a section of the retaining wall

MAIL KIOSK INFORMATION AND DETAIL HAS BEEN ADDED-RICK

Provide a detail of your mail kiosks on this sheet. Provide enough detail to reflect the accessibility requirements of sidewalks to meet ICC A117.1.

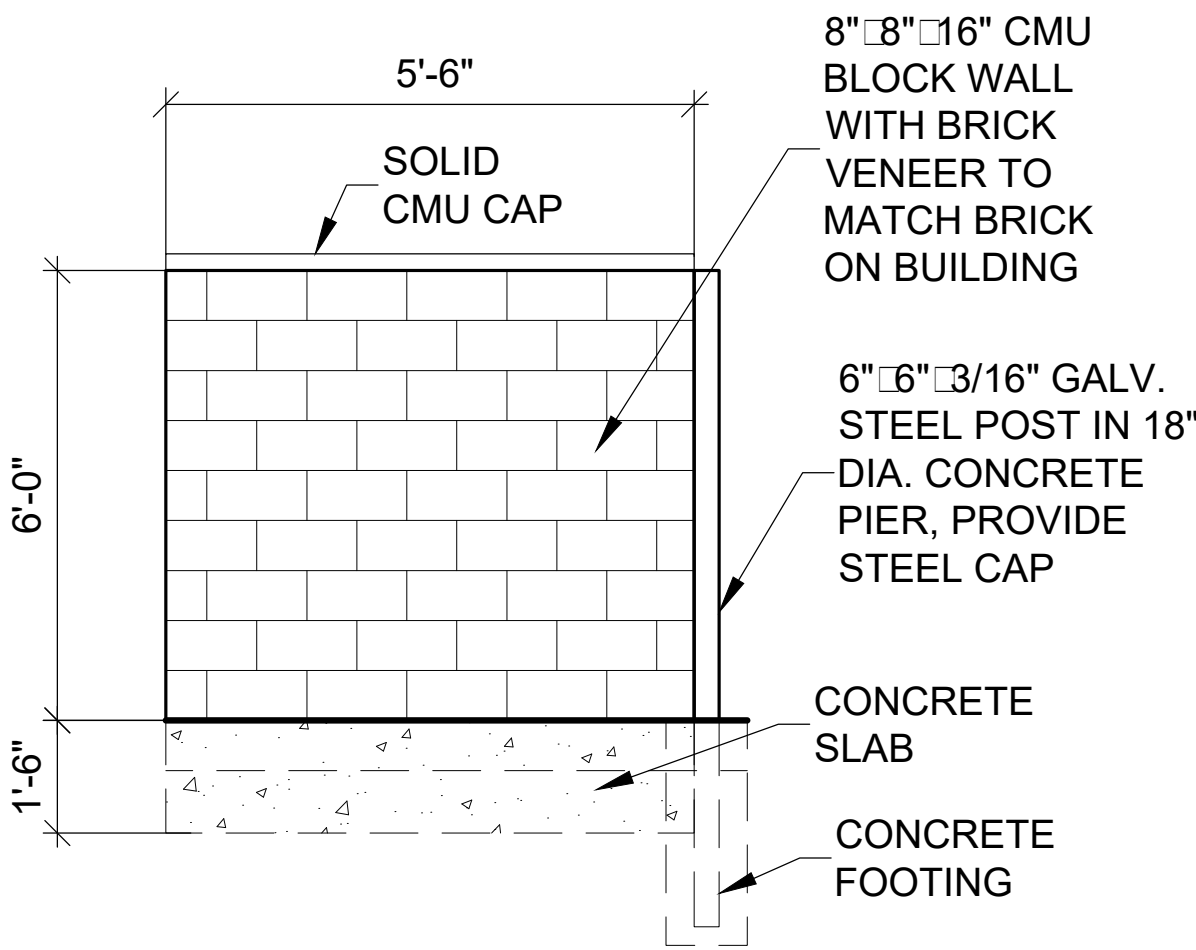
Provide sign package detail. See below for reference.

SIGN PACKAGE HAS BEEN INCLUDED IN CIVIL DRAWINGS. -RICK



TRASH ENCLOSURE GATE

NTS



TRASH ENCLOSURE WALL

NTS

IT PLA AM DM T
HIGHL ILLAG
T H M
CIT A R I R A

RICK
ENGINEERING COMPANY
5690 WEBSTER ST
ARVADA, CO 80002
303.423.6036
Tucson - San Diego - Riverside - Orange - Denver
Sacramento - San Luis Obispo - Phoenix - Las Vegas
rickengineering.com

811
Know what's below.
Call before you dig.

REVISIONS		DATE:
NO.	DESCRIPTION	

SCALE: 1" = 20'
DATE: 03/06/2020
DRAWN BY: KR
CHECKED BY: KN
JOB NO: 1243

LA D CAP
D TAIL

DRAWING NAME
SHEET NO. OF