

LOT 1, BLOCK 1
CITADEL ON COLFAX SUBDIVISION FILING NO. 2
LOCATED IN THE NORTHEAST QUARTER OF SECTION 6,
TOWNSHIP 4 SOUTH, RANGE 66 WEST OF THE 6TH PRINCIPAL MERIDIAN,
CITY OF AURORA, COUNTY OF ARAPAHOE, STATE OF COLORADO
SITE PLAN



42'-0"

PROPERTY LINE

CL

5'-0" WALK

26'-0" TRAVEL LANE

5'-0" TREE LAWN

5'-0" WALK

SIDEWALK TO BE CONSTRUCTED BY ADJACENT LOT OWNER


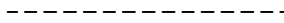



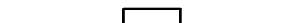


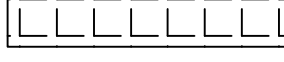
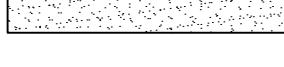
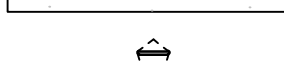


MURPHY EXPRESS

PRIVATE DRIVE TYPICAL SECTION

NOT TO SCALE

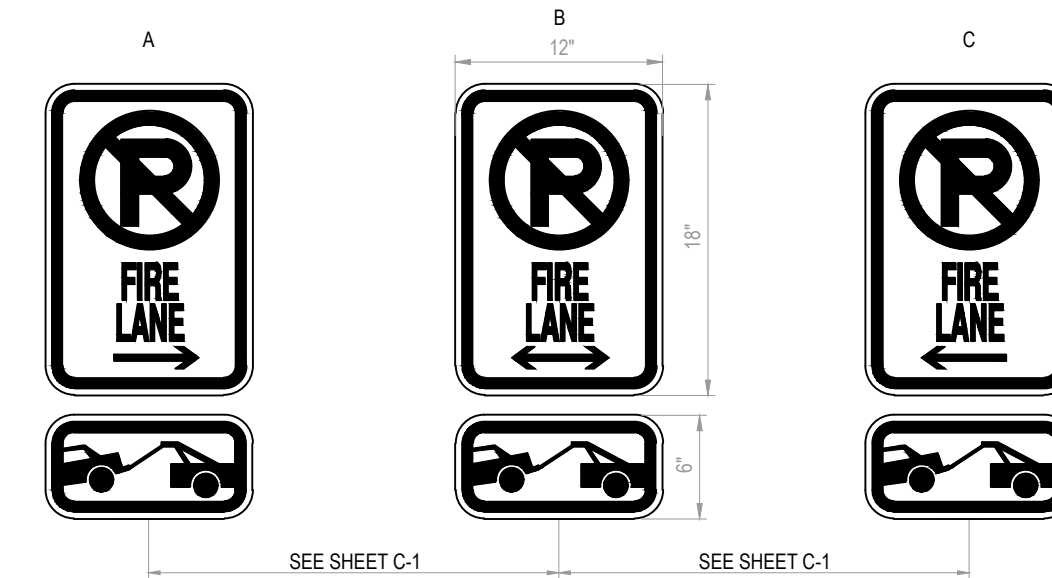
LOT 1, BLOCK 1
CITADEL ON COLFAX SUBDIVISION FILING NO. 2
LOCATED IN THE NORTHEAST QUARTER OF SECTION 6,
TOWNSHIP 4 SOUTH, RANGE 66 WEST OF THE 6TH PRINCIPAL MERIDIAN,
CITY OF AURORA, COUNTY OF ARAPAHOE, STATE OF COLORADO
ACCESS DRIVE EXHIBIT



	PROPERTY BOUNDARY
	PROPOSED EASEMENT
	PROPOSED ACCESSIBLE ROUTE
	PROPOSED CURB AND GUTTER
	EXISTING EASEMENT
	PROPOSED SAWCUT LINE
	PROPOSED PARKING COUNT
	PROPOSED SITE LIGHT
	ACCESS DRIVE IMPROVEMENTS
	ACCESS DRIVE IMPROVEMENTS
	PROPOSED CONCRETE SIDEWALK
	EXISTING CONCRETE SIDEWALK
	PROPOSED PUMP (8)

1. THE SHARED ACCESS DRIVE TO THE SOUTH CONNECTS THE OFFSITE DEVELOPMENT TO THE EAST OF THE CITADEL (COMMONLY REFERRED TO AS "THE OLD KRAMT DEVELOPMENT") TO NORTH ALTURA BOULEVARD (PRIVATE). MURPHY UNDERSTANDS THAT THE FINAL ALIGNMENT/DESIGN OF THE EASTERN PORTION OF THIS ACCESS DRIVE WILL NEED TO BE APPROVED AND PERMITTED IN CONCERT WITH THEIR APPROVALS SO THAT FINAL CONSTRUCTION OF THE ACCESS DRIVE CAN BE COMPLETED PRIOR TO MURPHY OBTAINING A CERTIFICATE OF OCCUPANCY.

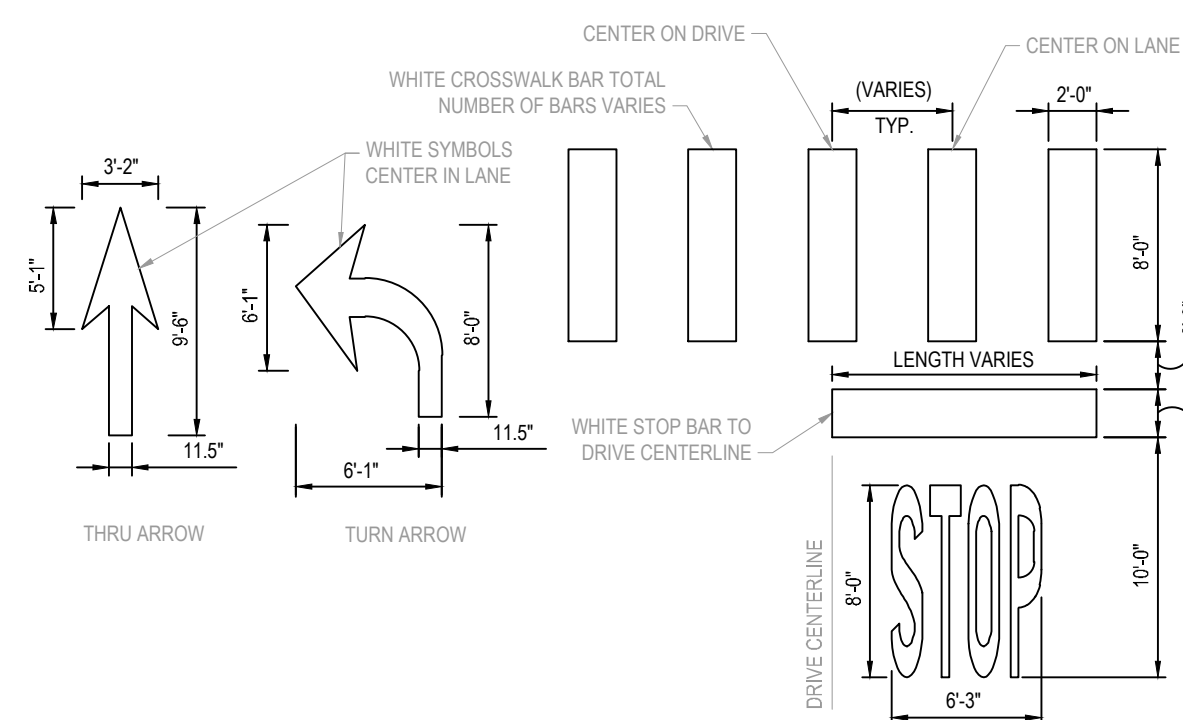
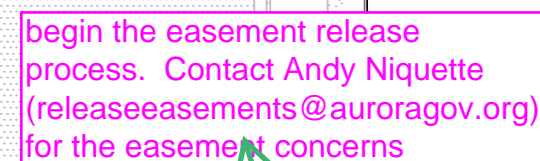
1. SIGNS SHALL BE LOCATED AT THE RIGHT SIDE OF THE FIRE LANE ENTRANCE AND AT THE END OF THE FIRE LANE. THE INTERMEDIATE SIGNS SHALL HAVE DOUBLE HEADED ARROWS POINTING IN BOTH DIRECTIONS.
2. TYPICALLY, THE MAXIMUM SPACING OF THE FIRE LANE SIGNS IS ESTABLISHED AT 100' ON CENTER WITH SIGNS BEING PLACED ON BOTH SIDES OF THE FIRE LANE EASEMENT. WHERE EXCESSIVE CURVATURE OF THE FIRE LANE EXISTS, THE SPACING OF THE FIRE LANE SIGNAGE WILL BE INCREASED AS NEEDED.
3. THE SIGNS SHALL BE SET AT AN ANGLE OF NOT LESS THAN 30 DEGREES AND NOT MORE THAN 45 DEGREES WITH THE CURB OR LINE OF TRAFFIC FLOW.
4. FIRE LANE SIGNS SHOULD BE INSTALLED 2' BEHIND CURB OR SIDEWALK.
5. THE CLEARANCE TO THE BOTTOM OF THE SIGN SHALL BE 7 FEET. THERE SHALL BE NOT OTHER SIGNS ATTACHED TO THE SIGN OR THE SIGN POST.
6. PLACEMENT OF THESE FIRE LANE SIGNS CANNOT ENCROACH INTO THE 29' INSIDE TURNING RADIUS OF THE FIRE LANE EASEMENT, OBSTRUCT ANY FIRE HYDRANT OR FIRE DEPARTMENT CONNECTION OR ENCROACH INTO THE ACCESSIBLE ROUTE OF THE SIDEWALK AREA.



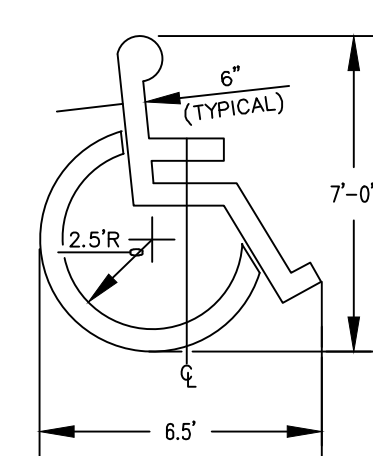
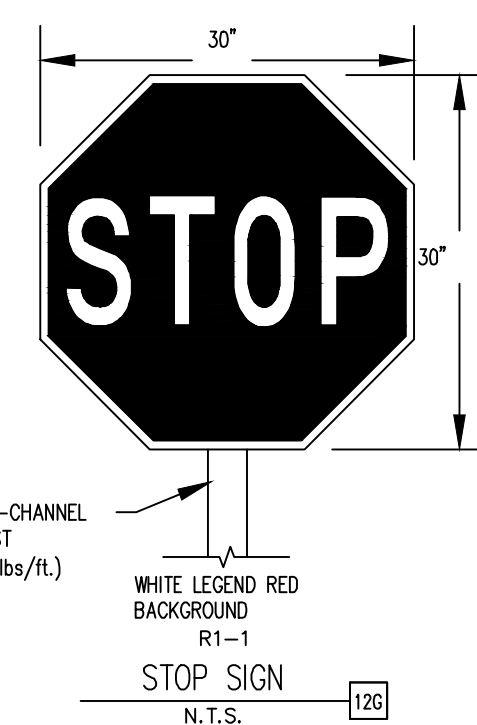
SIGN DETAILS ARE PROVIDED AS A MINIMUM STANDARD ONLY. SIGNS SHALL COMPLY WITH AUTHORITY HAVING JURISDICTION. CONTRACTOR SHALL COORDINATE WITH JURISDICTION HAVING AUTHORITY, SUPPLY & INSTALL.

- NOTES:
1. SIGNS SHALL BE PERMANENTLY LABELED AS NO PARKING - FIRE LANE COMPLYING WITH IFC FIGURE D103.6
 2. SIGNS SHALL HAVE A MINIMUM DIMENSION OF 12 INCHES (305 MM) WIDE BY 18 INCHES (457 MM) HIGH AND HAVE RED LETTERS ON A WHITE BACKGROUND WITH A THICKNESS OF 1/8"
 3. SIGNS SHALL BE LOCATED AT THE BEGINNING AND END OF THE FIRE LANE. THE SIGN SHALL HAVE A SINGLE HEADED ARROW POINTING IN THE DIRECTION THE REGULATION IS IN EFFECT. THE INTERMEDIATE SIGNS SHALL HAVE DOUBLED HEADED ARROWS POINTING IN BOTH DIRECTIONS
 4. GALVANIZED STEEL POST, SET 3'-0" MINIMUM, BELOW GRADE, UP TO MINIMUM 12" DIAMETER CONCRETE PIER, FULL DEPTH.
 5. THE MAXIMUM SPACING OF THE SIGNS SHALL TO 100'. CONTINGENT UPON LIFE SAFETY'S REVIEW AND APPROVAL.
 6. THE SIGNS SHALL BE SET AT AN ANGLE OF NOT LESS THAN 30 DEGREES AND NOT MORE THAN 45 DEGREES WITH THE CURB OR SIDE OF TRAFFIC FLOW.
 7. FIRE LANE SIGNS SHOULD BE INSTALLED 2' BEHIND CURB OR SIDEWALK.
 8. THE CLEARANCE TO THE BOTTOM OF THE SIGN SHALL BE 7 FEET. THERE SHALL BE NOT OTHER SIGNS ATTACHED TO THE SIGN OR SIGN POST.

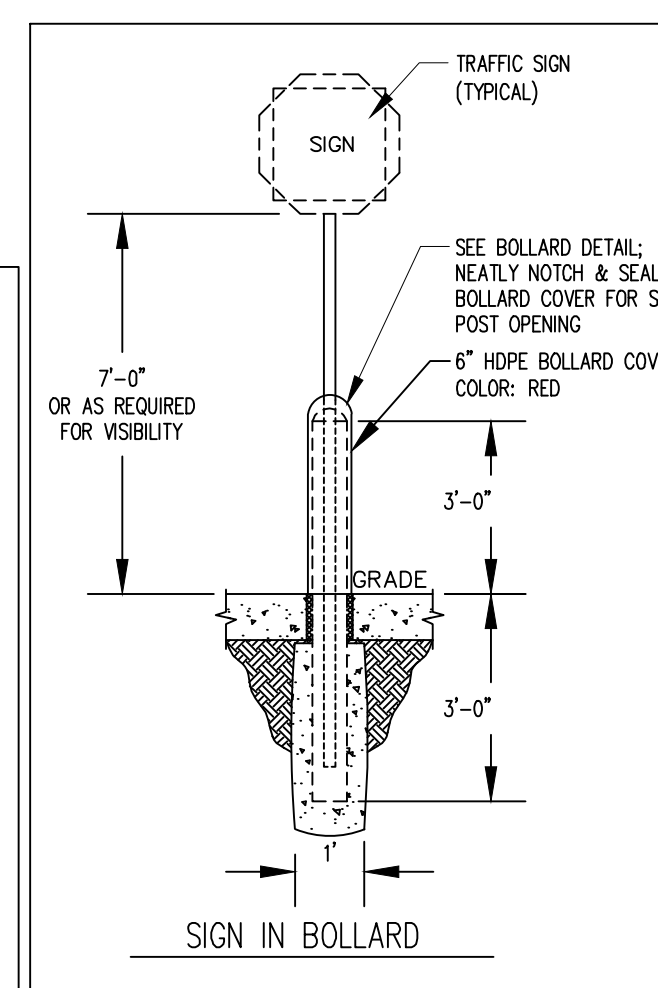
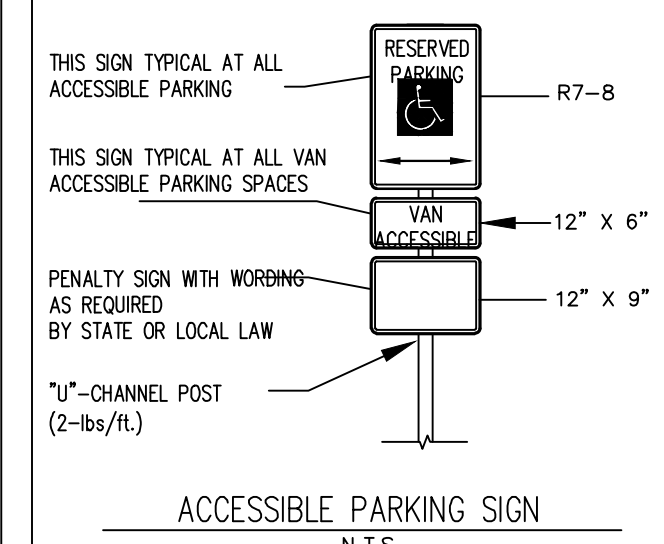
FIRE LANE AND TOW AWAY ZONE SIGN DETAIL
NOT TO SCALE



LANE STRIPING DETAILS



- NOTES:**
1. LOCATE AT EDGE OF PARKING SPACE UNLESS ACCOMPANIED BY "VAN" LETTERING.
 2. COLOR PER ADA REQUIREMENTS
- ACCESSIBLE PARKING SYMBOL**
- N T S



MURPHY EXPRESS
CITADEL ON COLFAX SUBDIVISION FILING NO. 2
BLOCK 8, LOT 1

AURORA, CO

[illegible]

ACCESS DRIVE EXHIBIT

MURPHY EXPRESS SITE PLAN
LOT 1, BLOCK 1
CITADEL ON COLFAX SUBDIVISION FILING NO. 2
LOCATED IN THE NORTHEAST QUARTER OF SECTION 6,
TOWNSHIP 4 SOUTH, RANGE 66 WEST OF THE 6TH PRINCIPAL MERIDIAN,
CITY OF AURORA, COUNTY OF ARAPAHOE, STATE OF COLORADO
SITE DETAILS



BENCH
NOT TO SCALE

LANDSCAPE FORMS
NEOLIVIANO BENCH
- MATERIAL: WOOD
- SIZE: 6"
- FINISH: STAINED & SEALED
- LOCATION: SEE PLANS



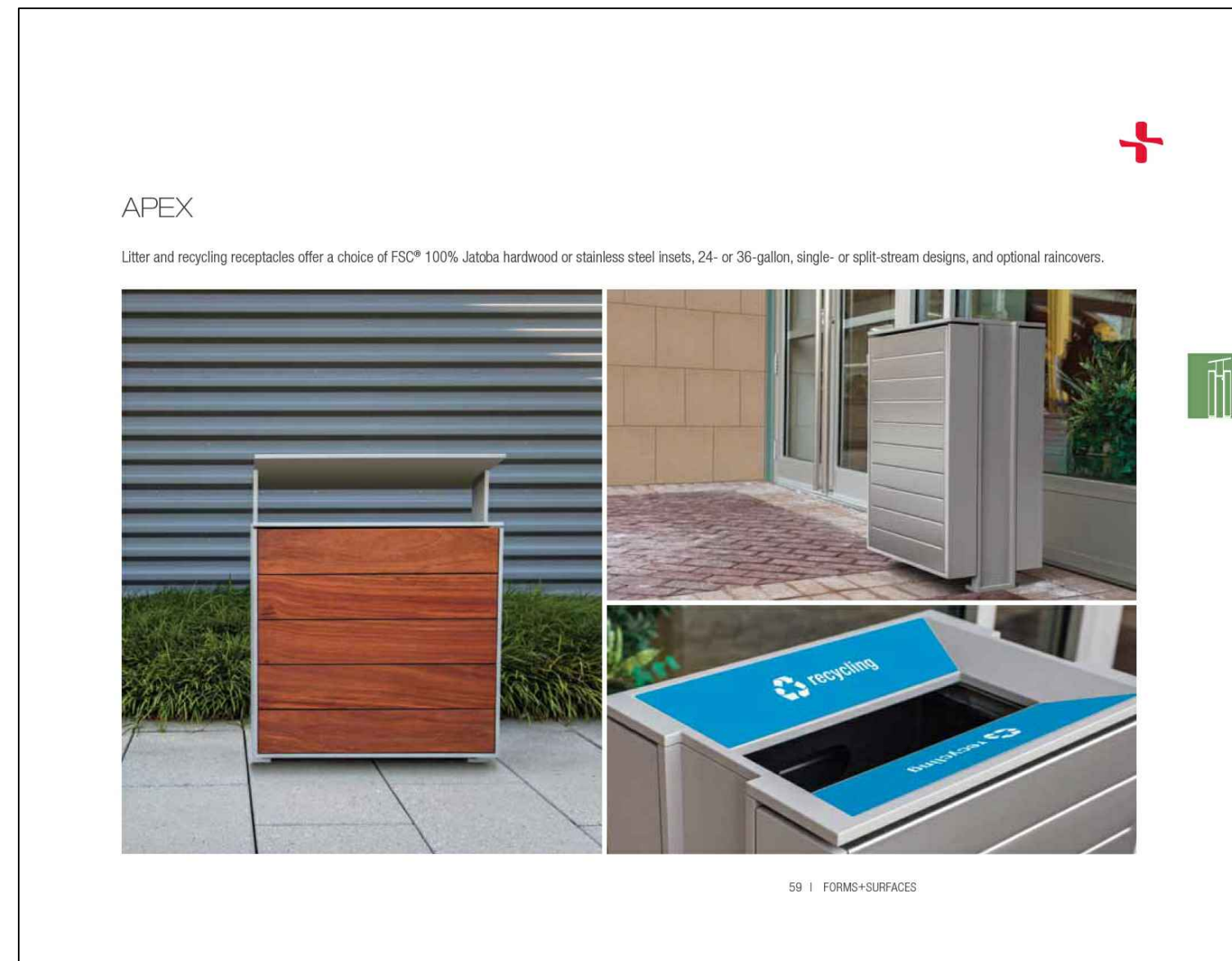
PICNIC TABLE
NOT TO SCALE

FORMS + SURFACES
APEX ENSEMBLE SEATING
- MATERIAL: WOOD
- SIZE:
- MOUNT: SURFACE
- LOCATION: SEE PLANS



BIKE RACK
NOT TO SCALE

FORMS + SURFACES
CAPITOL BIKE RACK
- MATERIAL: CAST ALUMINUM
- MOUNTING: SURFACE
- COLOR: TBD
- LOCATION: SEE PLANS



TRASH RECEPTACLE

NOT TO SCALE

FORMS + SURFACES
APEX TRASH / RECYCLING RECEPTACLE
- MATERIAL: TBD
- SIZE: TBD
- LOCATION: SEE PLANS



CAFE T.
NOT TO SCALE

MAGLIN SITE FURNITURE
FRT1700-RD SERIES TABLE / CHAIRS
- MATERIAL: METAL LASER DESIGN
- SIZE: TBD
- FINISH: POWDERCOAT
- COLOR: TBD



MURPHY EXPRESS
CITADEL ON COLFAX SUBDIVISION FILING NO. 2
BLOCK 8, LOT 1

AURORA, CO

[illegible]

Project No:	MOC000055.20
Drawn By:	ZLS
Checked By:	JES
Date:	10/05/20

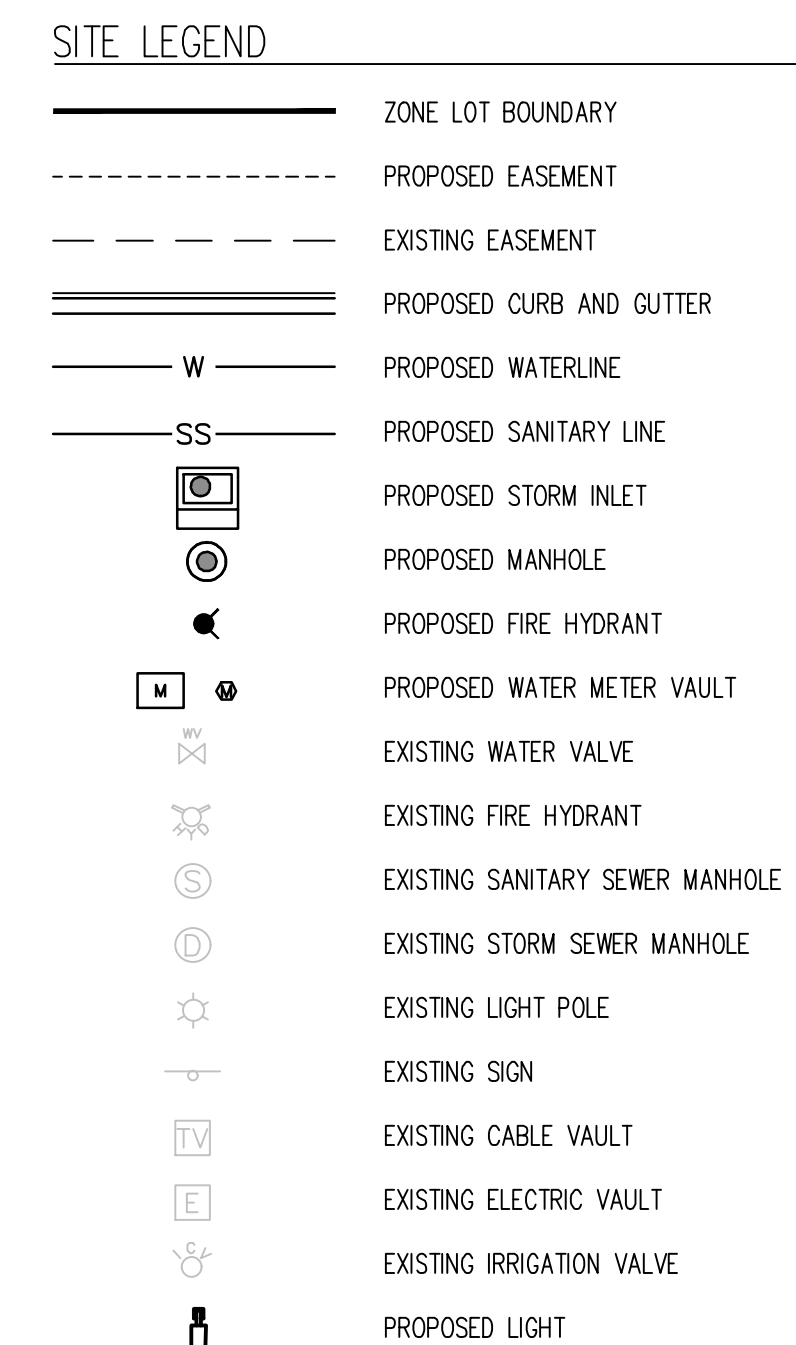
SITE DETAILS

LOCATED IN THE NORTHEAST QUARTER OF SECTION 6,
TOWNSHIP 4 SOUTH, RANGE 66 WEST OF THE 6TH PRINCIPAL MERIDIAN,
CITY OF AURORA, COUNTY OF ARAPAHOE, STATE OF COLORADO
GRADING PLAN



LOT 1, BLOCK 1
CITADEL ON COLFAX SUBDIVISION FILING NO. 2
LOCATED IN THE NORTHEAST QUARTER OF SECTION 6,
TOWNSHIP 4 SOUTH, RANGE 66 WEST OF THE 6TH PRINCIPAL MERIDIAN,
CITY OF AURORA, COUNTY OF ARAPAHOE, STATE OF COLORADO
UTILITY PLAN

CITADEL ON COLFAX SUBDIVISION FILING NO. 2
LOCATED IN THE NORTHEAST QUARTER OF SECTION 6,
TOWNSHIP 4 SOUTH, RANGE 66 WEST OF THE 6TH PRINCIPAL MERIDIAN,
CITY OF AURORA, COUNTY OF ARAPAHOE, STATE OF COLORADO
UTILITY PLAN



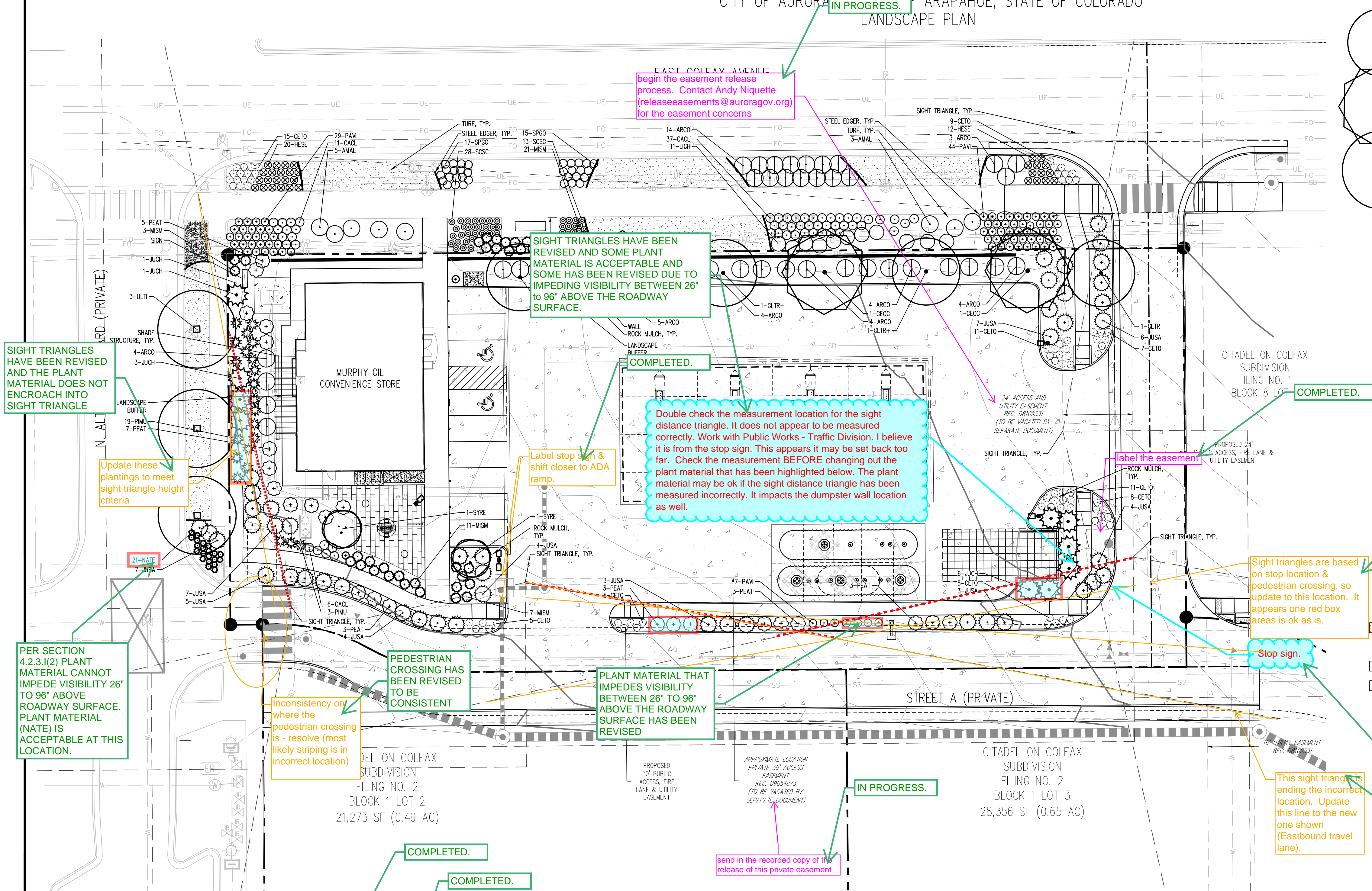
UTILITY PLAN SCHEDULE	
27	PROPOSED 6" ROOF DRAIN LINE
28	PROPOSED 15" STORM PIPE
29	PROPOSED 6" SANITARY SEWER SERVICE
30	PROPOSED 8" ROOF DRAIN LINE
31	PROPOSED BACKFLOW PREVENTER INSTALLED WITHIN BUILDING

Know what's **below**.
Call before you dig.

4

LOT 1, BLOCK 1
CITADEL ON COLFAX SUBDIVISION FILING NO. 2
LOCATED IN THE NORTHEAST QUARTER OF SECTION 6,
TOWNSHIP 4 SOUTH, RANGE 66 WEST OF THE 6TH PRINCIPAL MERIDIAN,
CITY OF AURORA, COUNTY OF ARAPAHOE, STATE OF COLORADO
IN PROGRESS.
LANDSCAPE PLAN

IN PROGRESS.



MURPHY EXPRESS SITE PLAN
LOT 1, BLOCK 1
CITADEL ON COLFAX SUBDIVISION FILING NO. 2
LOCATED IN THE NORTHEAST QUARTER OF SECTION 6,
TOWNSHIP 4 SOUTH, RANGE 66 WEST OF THE 6TH PRINCIPAL MERIDIAN,
CITY OF AURORA, COUNTY OF ARAPAHOE, STATE OF COLORADO
EXTERIOR ELEVATIONS (BUILDING)

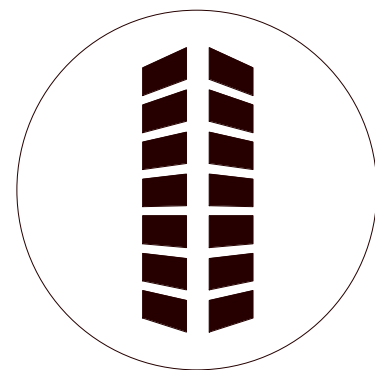
ALL SIGNAGES UNDER SEPARATE PERMIT

Galloway

6162 S. Willow Drive, Suite 320
Greenwood Village, CO 80111
303.770.8884
GallowayUS.com

This will be a public document
and must be able to be
reproduced. Remove the
copyright statement

COPYRIGHT
THESE PLANS ARE AN INSTRUMENT OF SERVICE
AND ARE THE PROPERTY OF GALLOWAY, AND MAY
NOT BE DUPLICATED, DISCLOSED, OR
REPRODUCED WITHOUT THE WRITTEN CONSENT
OF GALLOWAY. COPYRIGHTS AND INFRINGEMENTS
WILL BE ENFORCED AND PROSECUTED.



MURPHY EXPRESS
CITADEL ON COLFAX SUBDIVISION FILING NO. 2
BLOCK 8, LOT 1

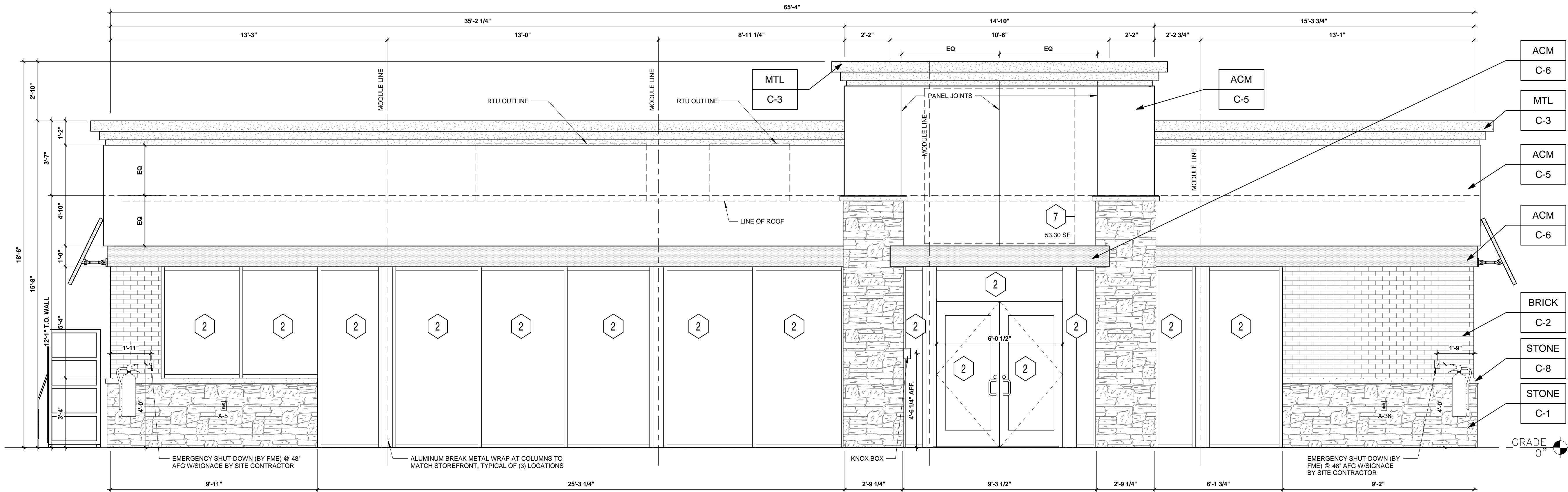
AURORA, CO

#	Date	Issue / Description	Init.
1			
2			
3			
4			
5			
6			
7			
8			
9			

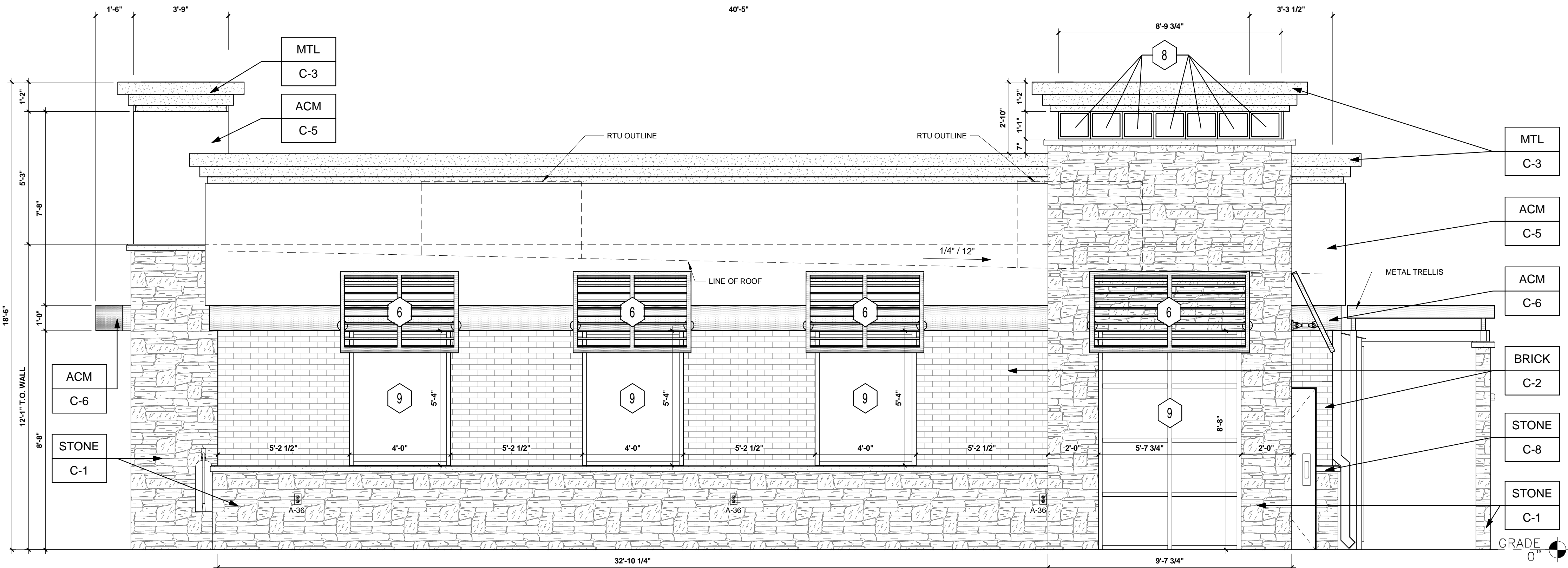
Project No:	MOC55
Drawn By:	SS
Checked By:	CC
Date:	20/04/21

EXTERIOR ELEVATIONS
(BUILDING)

01



1 EAST ELEVATION
3/8" = 1'-0"



2 NORTH ELEVATION (E. COLFAX AVE.)
3/8" = 1'-0"

NOTE : EXTERIOR MATERIALS
CONSIST SOLELY OF PRIMARY
BUILDING MATERIALS PER THE
DESIGN GUIDELINES

KEYED NOTES:

- NOT USED
- CLEAR ANODIZED ALUMINUM STOREFRONT SYSTEM KAWNEER, YKK OR EQUAL C-7
- EXTERIOR LIGHTING, REFER TO LIGHTING PLAN SHEET EL2
- 4" x 4" PAINTED METAL DOWNSPOUTS C-3
- DOORS (EXTERIOR SIDE) AND DOOR FRAMES PAINTED C-3
- METAL AWNING BY B&C AWNING INC. OR EQUAL C-6
- MURPHY EXPRESS STAR LOGO SIGNAGE BY SIGN CONTRACTOR
- FAUX WINDOWS WITH BLACK SPANDREL PANELS BY FMS
- CLEAR ANODIZED ALUMINUM STOREFRONT KAWNEER OR EQUAL WITH SPANDREL PANEL BY FMS

EXTERIOR FINISHES:

ACM	ACM (3MM THICKNESS)	BY FMS
BRICK	THIN BRICK	BY FMS
MTL	20 GA. SHEET METAL (UNLESS NOTED OTHERWISE)	BY FMS
STONE	STONE SILL	BY FMS

EXTERIOR PAINT/COLORS:

C-1	THIN STONE VENEER - 'MOSSY MOUNTAIN' BY HALQUIST STONE	BY FMS
C-2	THIN BRICK VENEER - 'TUMBLEWEED' BY INTERSTATE BRICK	BY FMS
C-3	DORMER BROWN' SW #7521	BY FMS
C-4	REYNOBOND #4 NATURAL BRUSHED ALUMINUM BY ARCONIC	BY FMS
C-5	'GRECIAN IVORY' SW #7541	BY FMS
C-6	'PROGRAM RED' BY ALPOLIC	BY FMS
C-7	CLEAR ANODIZED ALUMINUM STOREFRONT	BY FMS
C-8	STONE SILL - CONCRETE GRAY CAP	BY FMS

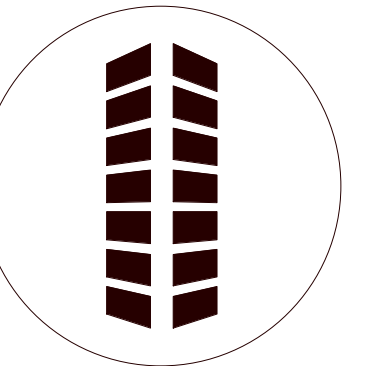
MURPHY EXPRESS SITE PLAN
LOT 1, BLOCK 1
CITADEL ON COLFAX SUBDIVISION FILING NO. 2
LOCATED IN THE NORTHEAST QUARTER OF SECTION 6,
TOWNSHIP 4 SOUTH, RANGE 66 WEST OF THE 6TH PRINCIPAL MERIDIAN,
CITY OF AURORA, COUNTY OF ARAPAHOE, STATE OF COLORADO
EXTERIOR ELEVATIONS (BUILDING)

ALL SIGNAGES UNDER SEPARATE PERMIT

Galloway

6162 S. Willow Drive, Suite 320
Greenwood Village, CO 80111
303.770.8884
GallowayUS.com

COPYRIGHT
THESE PLANS ARE AN INSTRUMENT OF SERVICE
AND ARE THE PROPERTY OF GALLOWAY, AND MAY
NOT BE DUPLICATED, DISCLOSED, OR
REPRODUCED WITHOUT THE WRITTEN CONSENT
OF GALLOWAY. COPYRIGHTS AND INFRINGEMENTS
WILL BE ENFORCED AND PROSECUTED.



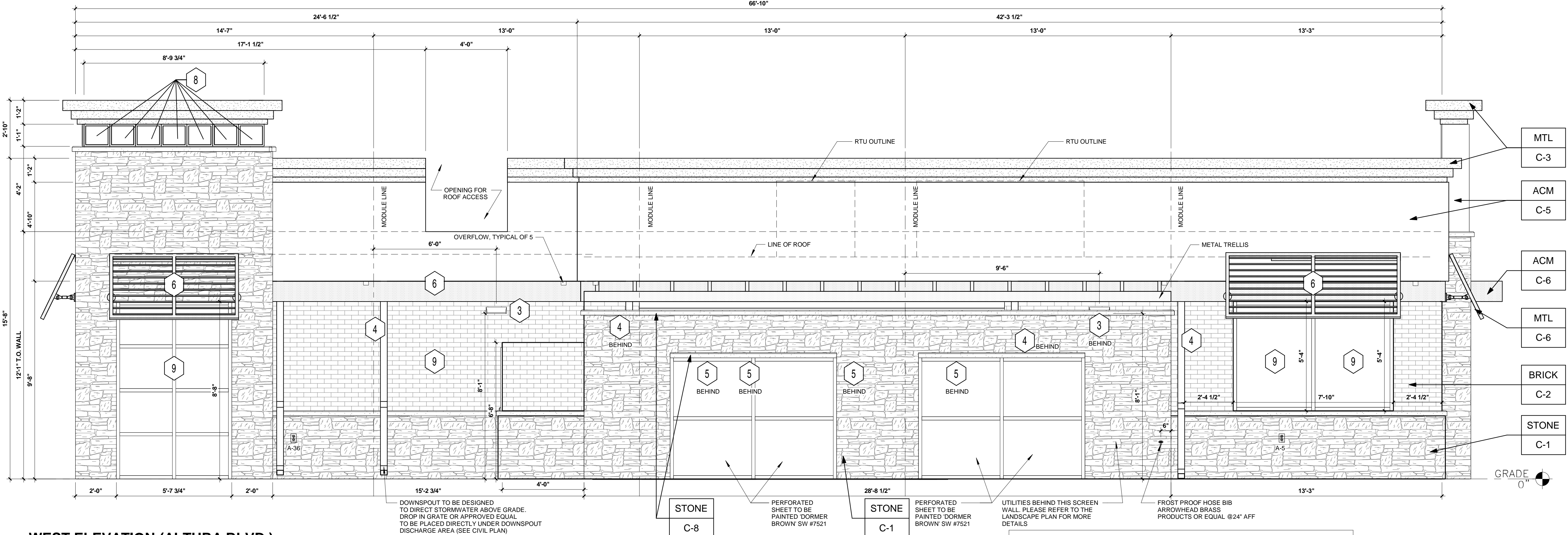
MURPHY EXPRESS
CITADEL ON COLFAX SUBDIVISION FILING NO. 2
BLOCK 8, LOT 1
AURORA, CO

#	Date	Issue / Description	Init.
1			
2			
3			
4			
5			
6			
7			
8			
9			

Project No: MOC55
Drawn By: SS
Checked By: CC
Date: 20/04/21

EXTERIOR ELEVATIONS
(BUILDING)

02



3 WEST ELEVATION (ALTURA BLVD.)
3/8" = 1'-0"

REAR ELEVATION			
AREA OF FACADE (BETWEEN 2'-0" TO 9'-0")	AREA OF TRANSPARENCY (SQFT)	REQUIRED TRANSPARENCY (%)	PROVIDED TRANSPARENCY (%)
468	188	50%	40%

KEYED NOTES:

- NOT USED
- CLEAR ANODIZED ALUMINUM STOREFRONT SYSTEM
KAWNEER, YKK OR EQUAL C-7
- EXTERIOR LIGHTING, REFER TO LIGHTING PLAN SHEET EL2
- 4" x 4" PAINTED METAL DOWNSPOUTS C-3
- DOORS (EXTERIOR SIDE) AND DOOR FRAMES PAINTED C-3
- METAL AWNING BY B&C AWNING INC. OR EQUAL C-6
- MURPHY EXPRESS STAR LOGO SIGNAGE BY SIGN CONTRACTOR
- FAUX WINDOWS WITH BLACK SPANDREL PANELS BY FMS
- CLEAR ANODIZED ALUMINUM STOREFRONT KAWNEER OR EQUAL
WITH SPANDREL PANEL BY FMS

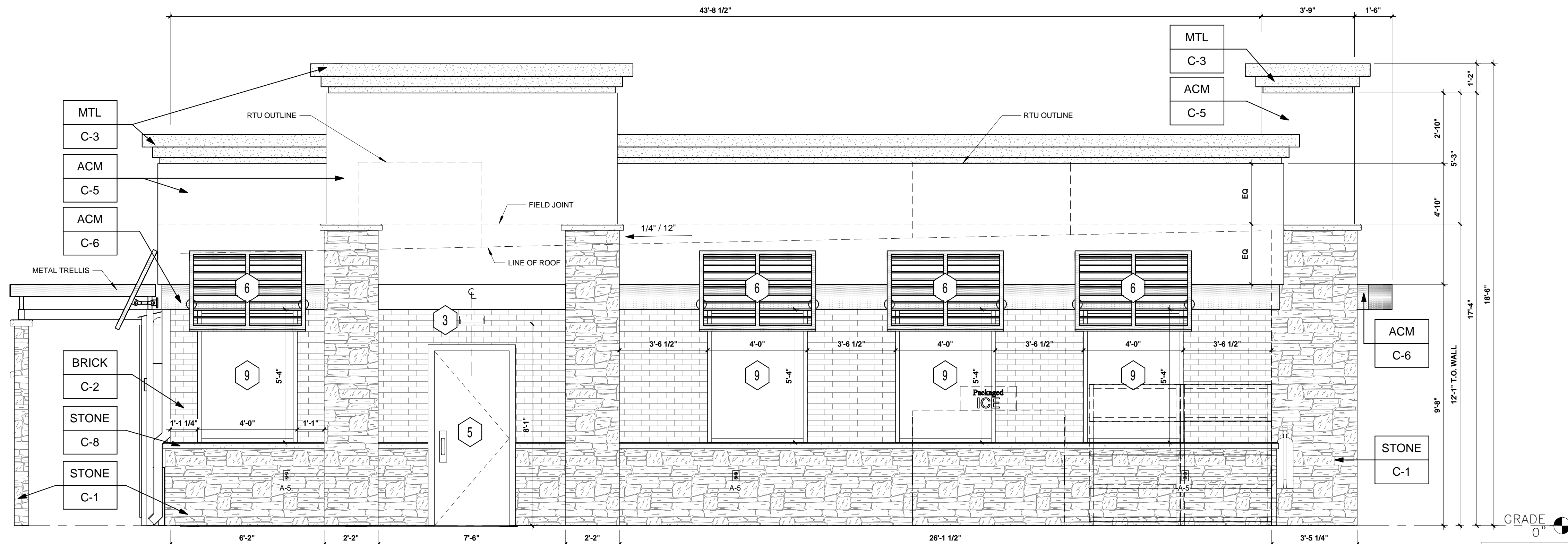
EXTERIOR FINISHES:

ACM	ACM (3MM THICKNESS)	BY FMS
BRICK	THIN BRICK	BY FMS
MTL	20 GA. SHEET METAL (UNLESS NOTED OTHERWISE)	BY FMS
STONE	STONE SILL	BY FMS

EXTERIOR PAINT/COLORS:

C-1	THIN STONE VENEER - 'MOSSY MOUNTAIN' BY HALQUIST STONE	BY FMS
C-2	THIN BRICK VENEER - 'TUMBLEWEED' BY INTERSTATE BRICK	BY FMS
C-3	DORMER BROWN' SW #7521	BY FMS
C-4	REYNOBOND #4 NATURAL BRUSHED ALUMINUM BY ARCONIC	BY FMS
C-5	GRECIAN IVORY' SW #7541	BY FMS
C-6	'PROGRAM RED' BY ALPOLIC	BY FMS
C-7	CLEAR ANODIZED ALUMINUM STOREFRONT	BY FMS
C-8	STONE SILL - CONCRETE GRAY CAP	BY FMS

NOTE : EXTERIOR MATERIALS
CONSIST SOLELY OF PRIMARY
BUILDING MATERIALS PER THE
DESIGN GUIDELINES



4 SOUTH ELEVATION
3/8" = 1'-0"

ALL SIGNAGES UNDER SEPARATE PERMIT

6162 S. Willow Drive, Suite 320
Greenwood Village, CO 80111
303.770.8884
GallowayUS.com

COPYRIGHT
THESE PLANS ARE AN INSTRUMENT OF SERVICE
AND ARE THE PROPERTY OF GALLOWAY, AND MAY
NOT BE DUPLICATED, DISCLOSED, OR
REPRODUCED WITHOUT THE WRITTEN CONSENT
OF GALLOWAY. COPYRIGHTS AND INFRINGEMENTS
WILL BE ENFORCED AND PROSECUTED.



MURPHY EXPRESS
CITADEL ON COLFAX SUBDIVISION FILING NO. 2
BLOCK 8, LOT 1

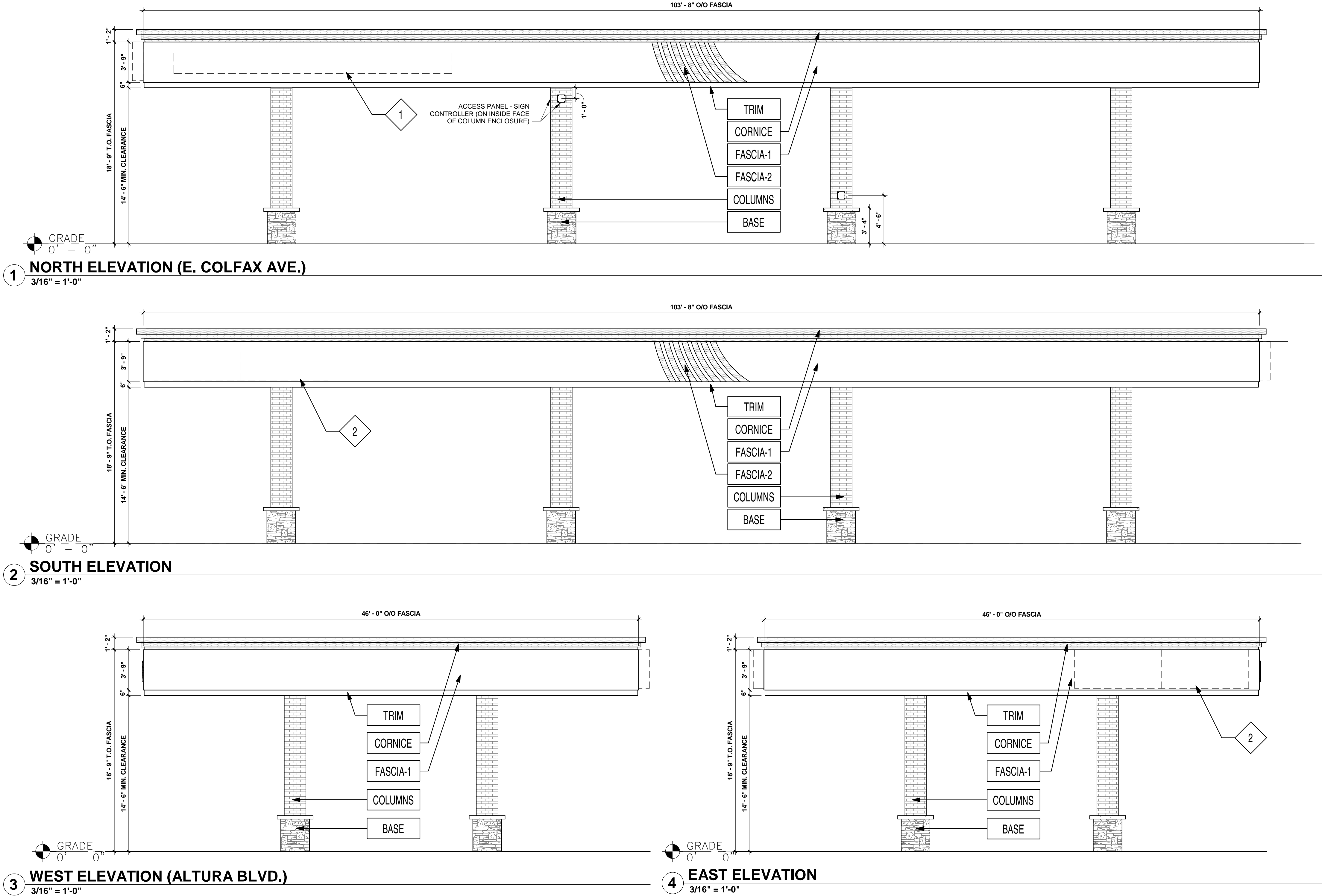
AURORA, CO

[illegible]

Project No:	MOC55
Drawn By:	SS
Checked By:	CC
Date:	20/04/21

EXTERIOR ELEVATIONS (CANOPY)

03



KEYED NOTES

1	MURPHY EXPRESS CANOPY LOGO = 49.50 SQ. FT.
2	COMBINED CANOPY PRICE SIGN (UNL/DSL) = 115 .90 S.F.

FINISH SCHEDULE			
FASCIA-1	ACM (ALUMINUM COMPOSITE MATERIAL)	ACM FASCIA "GRECIAN IVORY" SW #7541	FURNISHED & INSTALLED BY FMS
FASCIA-2	ACM (ALUMINUM COMPOSITE MATERIAL)	ACM FASCIA "PROGRAM RED" BY ALPOLIC	FURNISHED & INSTALLED BY FMS
TRIM	20 GA. SHEET METAL	6" HT PRE-FINISHED METAL ACCENT BAND "PROGRAM RED" BY ALCOA	FURNISHED & INSTALLED BY FMS
COLUMNS	THIN BRICK VENEER	"TUMBLEWEED" BY INTERSTATE BRICK	FURNISHED & INSTALLED BY FMS
BASE	THIN STONE VENEER	"MOSSY MOUNTAIN" BY HALQUIST STONE	FURNISHED & INSTALLED BY FMS
CORNICHE	ACM (ALUMINUM COMPOSITE MATERIAL)	PAINTED "PROGRAM RED" BY ALPOLIC	FURNISHED & INSTALLED BY FMS PAINTED BY SITE CONTRACOR IN FIELD

**NOTE : EXTERIOR MATERIALS
CONSIST SOLELY OF PRIMARY
BUILDING MATERIALS PER THE
DESIGN GUIDELINES**