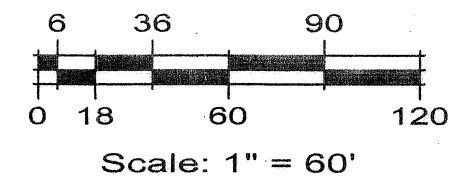


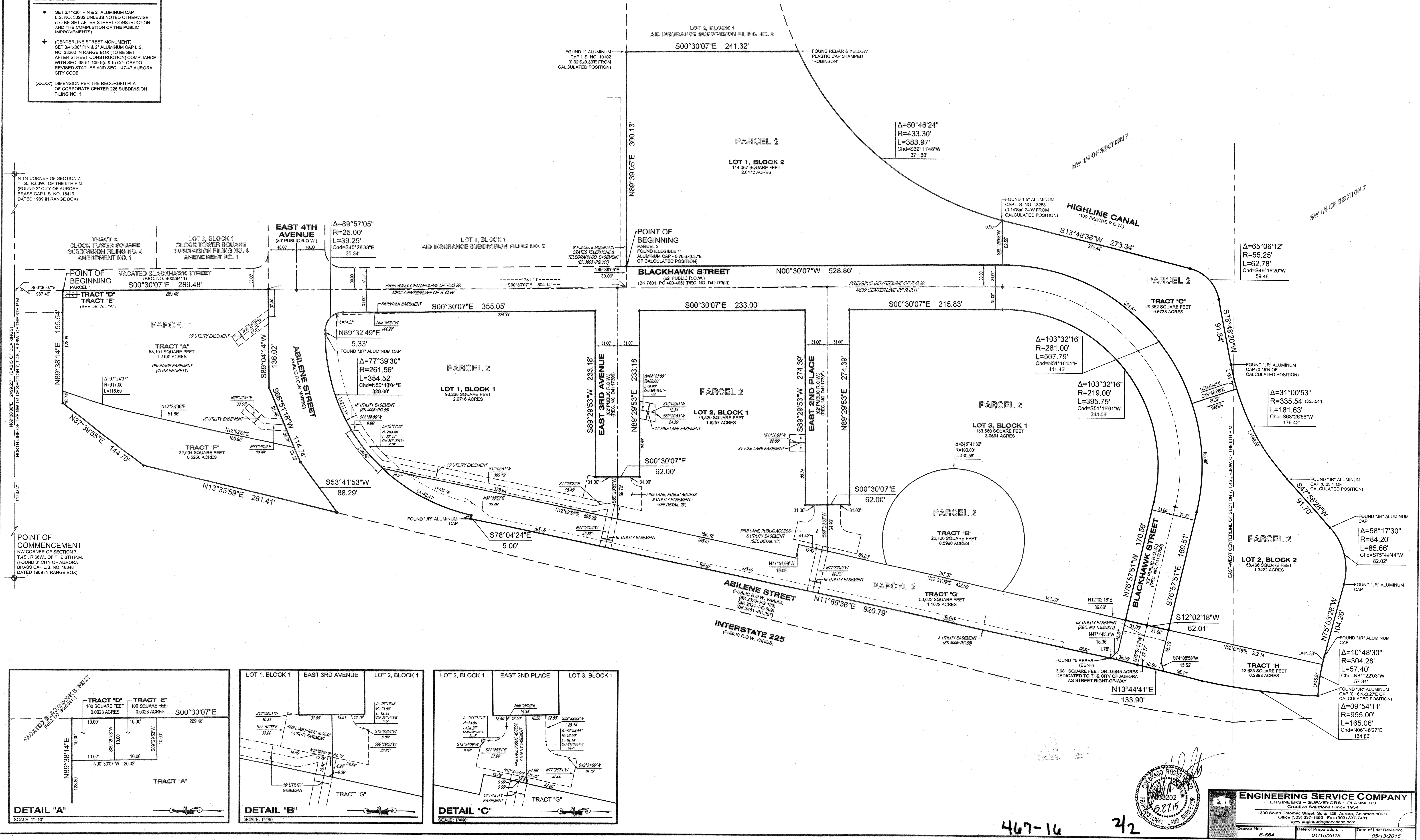
# ABILENE STATION SUBDIVISION FILING NO. 1

A RESUBDIVISION OF TRACTS 10 AND 20, FLORENCE GARDENS, LOTS 1 THROUGH 4, BLOCK 1 AND TRACT A,  
CORPORATE CENTER 225 SUBDIVISION FILING NO. 1 AND LOT 2, BLOCK 1, MURRAY-KRAUSE SUBDIVISION FILING NO. 1  
SITUATED IN THE W 1/2 OF SECTION 7, T.4S., R.66W. OF THE 6TH P.M.  
CITY OF AURORA, COUNTY OF ARAPAHOE, STATE OF COLORADO  
SHEET 2 OF 2



## LEGEND

- SET 3/4"x30" PIN & 2" ALUMINUM CAP L.S. NO. 3302 UNLESS NOTED OTHERWISE (TO BE SET AFTER STREET CONSTRUCTION AND THE COMPLETION OF THE PUBLIC IMPROVEMENTS)
- + (CENTERLINE STREET MONUMENT) SET 3/4"x30" PIN & 2" ALUMINUM CAP L.S. NO. 3302 IN RANGE BOX (TO BE SET AFTER STREET CONSTRUCTION) COMPLIANCE WITH SEC. 38-51-109-6(a & b) COLORADO REVISED STATUTES AND SEC. 147-47 AURORA CITY CODE
- (XX.XX) DIMENSION PER THE RECORDED PLAT OF CORPORATE CENTER 225 SUBDIVISION FILING NO. 1



DETAIL "A"

SCALE: 1"=10'

DETAIL "B"

SCALE: 1"=40'

DETAIL "C"

SCALE: 1"=40'



## ENGINEERING SERVICE COMPANY

ENGINEERS - SURVEYORS - PLANNERS  
Creative Solutions Since 1954  
1300 South Potomac Street, Suite 126, Aurora, Colorado 80012  
Office (303) 337-1393 Fax (303) 337-7481  
www.engineerserviceco.com

Drawn By: E-664 Date of Preparation: 01/15/2015 Date of Last Revision: 05/13/2015