



CRESTONE PEAK

RESOURCES

Letter of Introduction

**Blue 3-65 33-32-31 1BH, 2AH, 2BH,
3AH, 3BH, 4AH, & 4BH**

City File No. DA-2276-00

(Blue 3-65 33-32-31 Facility)

TABLE OF CONTENTS

Letter of Introduction	1-3
Name, Address, Email and Telephone Number of the Applicant	1
Summary Statement of the Project	2-3
 Best Management Practices.....	 3-11
Definitions	3
Access Roads	3
Air Quality	3
Anchoring	3
Automatic Safety Protective Systems/Surface Safety Valves	4
Burning	4
Chemical Disclosure and Storage	4
Class II Underground Injection Control Wells	4
Closed-Loop Pitless Systems for the Containment and/or Recycling of Drilling Fluids	4
Color/Paint Color	4
Combustion Devices	4
Containment Berms	5
Cultural and Historical Resource Protection	5
Discharge Valves	5
Electric Equipment	5
Events or Incidents/Events to be Reported	5
Emergency Response/Action Plan	5
Fencing/Security Fencing	5
Flammable Material	6
Flowlines	6
Fugitive Dust Suppression	6
General Maintenance	6
Landscaping	6
Lighting	6
Low Profile Equipment/Low Profile Tanks	6
Maintenance of Machinery	6
Mud Tracking	6
Noise Management Plan/Noise Mitigation	7
Notifications to the City Regarding Commencement of Operations and Phases of Operations/Notification to the City Regarding Commencement of Construction at CGF and Pipeline Operations/Notifications to the City	8
Noxious Weed Control	8
Odor	8
PHA-Hazard and Operability Study	8

Plugged and Decommissioned Well Testing	8
Reclamation	8
Interim.....	8
Final	8
Reduced Emission Completions (Commonly Known as Green Completions)	9
Removal of Debris	9
Removal of Equipment.....	9
Road Repairs	9
Spills	9
Stormwater Management.....	9
Trailers	10
Transportation and Circulation.....	10
Transportation and Storage of Fluids	10
Tree Mitigation.....	10
Visual Mitigation	10
Wastewater and Waste Management.....	10
Water Protection Requirements.....	10
Water Quality Monitoring Plan/Groundwater Pollution Mitigation	11
Water Supply.....	11
 Neighborhood Meeting Results	 12
Typical Photos	13-26
Plat Package (excerpts)	27-33

**Blue 3-65 33-32-31 1BH, 2AH, 2BH,
3AH, 3BH, 4AH, & 4BH
OIL & GAS PERMIT
NW/4 NW/4 SEC. 34-T3S-R65W, 6TH P.M.
ARAPAHOE COUNTY, COLORADO
(CITY OF AURORA)
SUBMITTAL: September 3, 2021**

Prepared for:



1801 California St., Suite 2500
Denver, CO 80202
(720)-822-8083
Kathy.Denzer@crestonepr.com

Prepared by:

Uintah Engineering and Land Surveying
85 South 200 East, Vernal, UT 84078
O: 435.789.1017
www.uintahgroup.co

Project Summary

Project Location

Crestone Peak Resources Operating, LLC, the applicant, plans an oil and gas well location in the Northwest Quarter of the Southwest Quarter of Section 34, Township 3 South, Range 65 West, of the 6th Principal Meridian. Seven wells are planned on one pad and are spaced 20' in the East to West direction, where the western most well (1BH) is located approximately 2,283 feet north of the South Section Line and 493 feet east of the West Section Line. The existing topography generally drains from southwest to northeast towards a tributary of Prairie Dog Draw at an existing grade of approximately 3%. The site is located within the Coyote Run watershed and near tributaries of Prairie Dog Draw, and lies outside of any floodplains. Stormwater runoff from the existing site generally collects into a natural swale running through the site, which eventually outfalls into Prairie Dog Draw. No other non-storm water sources are contemplated at this project site. The landscape is currently used for rangeland or dryland crops. The project site is on land classified as AD Airport District Please refer to **Site Plan and Vicinity Map**.

Purpose, Well Site Construction and Access Road

To support drilling operations of the seven wells, a graded flat (0%) 460' by 605' granular pad will be constructed. After drilling operations are completed, the south end of the pad will be reclaimed, reducing the size to a flat 345' x 605' granular pad to support production equipment. The total disturbance for the pad will be 13.349 acres that will be reduced to 9.891 acres during interim reclamation. The well pad will be accessed by a 1,470' long, 23' wide, granular access road that will connect to the access road for the Mustang Compressor Station, which extends approximately 3,460 feet north to access off the south side of E. 26th Ave. This access is approximately one-half mile east of Monaghan Rd. Construction of the pad and access road will require approximately one month. BMPs will be installed to mitigate the earthmoving activities and to stabilize the disturbed surfaces to achieve re-vegetation. A four-foot-tall wildlife fence will be erected around the Well Site and a locked gate will be installed at the access road/Well Site entrance. In conjunction with the interim reclamation phase, an eight foot (8') tall opaque fence and locking gate will be installed around the pad. This fencing and gate will provide security for the life of the well.

Following the pad and access road construction, a drilling rig will be brought to the site, commencing a ten-day, twenty-four hour per day, drilling operation for each well. Typical operations on the well pad site will consist of a rig at the center of the pad along with water storage to be used in the drilling operation, pipe racks to temporarily store drill pipe, a mud pump to circulate the drilling fluids through the system, power generators, tool storage, fuel storage for said generators and pumps, and a doghouse enclosure to protect workers from inclement weather. Several mud tanks will be located adjacent to the rig to store drilling fluid until it is required down the wellbore. The site will be operated 24 hours per day, 7 days a week. Crestone Peak Resources and the City of Aurora have executed a Water Use Agreement that will secure water for the drilling and completion operations. A third-party water provider will be contracted to manage the transportation of the water to the drill site. Crestone Peak Resources and the City of Aurora executed a Road Maintenance Agreement dated January 3, 2018, and subsequently amended December 18, 2019 which includes the Blue 3-65 33-32-31 well pad.

Construction trailers, portable toilets, garbage storage, and extra fuel storage will be located near the edge of the pad site. Crestone Peak Resources utilizes a “closed loop system” during drilling. Water used to support drilling operations may be trucked in or piped in and temporarily stored onsite. Drilling mud will be disposed of offsite, in a manner approved by the Colorado Oil & Gas Conservation Commission (COGCC).

The Completion Phase and Flow Back follows drilling, which combined, will last approximately two weeks for each well. It is at this time that the formation fracturing occurs. Fracturing materials, mainly sand, are trucked in and mixed onsite with water and other fracturing fluids. Production equipment is installed concurrent with the Completion Phase. Said equipment consists of a pumping unit, several storage tanks for extracted minerals, vapor recovery facilities, a meter run, combustors, and compressors. Produced oil and gas will be trucked offsite, until such time as the planned gathering system is in place. Produced water will be disposed of offsite as approved by the COGCC. Production of a viable well can last twenty-years.

The BMP Site Specific narratives that follow summarize the BMPs listed in Exhibit C of the Operator Agreement (OA) between the City of Aurora and ConocoPhillips Company and its subsidiaries, dated June 5, 2019, and subsequently assigned to Crestone Peak Resources, with a brief explanation of how the Applicant intends to accomplish the obligation of each specific BMP for the Blue 3-65 33-32-31 project.

Please note that the numbering does not correlate to the individual BMP Operating Agreement numbers.

1. **Definitions:** The Operator Agreement references the following defined terms that have been used throughout this application: **Residential Building Unit, High Occupancy Building, Construction Phase, Drilling Phase, Completion Phase, Production Phase, and Reclamation Phase.** (see *Operator Agreement, Exhibit C, BMP No. 1*).
2. **Access Roads:** The final access road alignment was laid out during the civil survey. The route was also based on the surface ownership of the Applicant along with the local topography. The access point at the nearest public roadway was determined by sight distances and setbacks from existing intersections. The first one hundred feet (100') will be constructed of asphalt. The access road will be constructed in conformance with the City's 2016 Roadway Specification Manual. (See *Operator Agreement, Exhibit C, BMP No. 28; Site Plan: General Construction Notes 4&6; Fire Access Road and Pad Construction Note Nos. 1, 2 and 3; and Operations Plan.*)
3. **Air Quality:** The Fieldwide plan addresses policies and procedures used to evaluate, eliminate, capture, or minimize all potentially harmful emissions and compliance with all applicable state and federal regulations, including regulations promulgated by Colorado Department of Public Health and Environment, Colorado Oil and Gas Conservation Commission and United States Environmental Protection Agency. Applicant will be working with Project Canary, a third-party vendor who manufactures and services the air quality monitoring stations within 500 feet of the Well Site. At least five days prior to oil and gas operations commencing, the background monitoring station(s) will be placed away from and upwind of the emission concern areas. The air quality monitoring stations will provide continuous monitoring throughout the life of the well(s). Vendor will also manually deploy at least one whole-air canister to collect samples for a one-week time span prior to oil and gas operations commencing. (See *Operator Agreement, Exhibit C, BMP No. 15; Air Quality Plan, and Site Plan.*)
4. **Anchoring:** During Drilling and Completion phases of the Blue 3-65 33-32-31, all equipment requiring anchoring is anchored using surface anchors or removable anchoring systems, no anchors are left behind for future use. During Production Phase, tanks and separation equipment are secured to the ground using anchors engineered to resist flotation, collapse, lateral movement, or subsidence. The Blue 3-65 33-32-31 location is not in a floodplain. (See *Operator Agreement, Exhibit C, BMP No. 41.*)

5. **Automatic Safety Protective Systems and Surface Safety Valves:** The Blue 3-65 33-32-31 Well Site will be equipped to operate remotely via the automated safety protective system. This system monitors flowing pressures and other operating parameters which have predetermined threshold values programmed and will remotely shut the well in should certain upset conditions be detected. All vessels and tanks are equipped with high level remote shutdowns to prevent an overflow scenario. Additionally, the automated safety system provides the ability to remotely shut-in wells on demand through operator remote intervention. (See *Operator Agreement, Exhibit C, BMP No. 45 and Operations Plan.*)
6. **Burning:** The Applicant will not allow open burning of debris to occur on the Blue 3-65 33-32-31 Well Site or any oil and gas operation, as per City code. This does not include emergency flares. (See *Operator Agreement, Exhibit C, BMP No. 6 and Operations Plan.*)
7. **Chemical Disclosure and Storage:** All hydraulic fracturing chemicals will be disclosed to the Aurora Fire Rescue department. Prior to the bringing of such chemicals onto the Blue 3-65 33-32-31 property, the Applicant will make available to the City the storage, containment and disposal method for such chemicals. (See *Operator Agreement, Exhibit C, BMP No. 7 and Operations Plan.*)
8. **Class II Underground Injection Control Wells:** The Applicant will not develop, use, operate, or contract with any third party for the use of any Class II underground injection control wells within the city limits or within a four-mile buffer of the City's existing or planned critical infrastructure. Notwithstanding the four-mile buffer, Applicant may use the Class II underground injection well operated by Expedition Water Solutions located in the SW/ 4 of Section 5, T5SR64W in Arapahoe County. (See *Operator Agreement, Exhibit C, BMP No. 34; and Operations Plan.*)
9. **Closed-Loop Pitless System for the Containment and/or Recycling of Drilling Fluids:** Blue 3-65 33-32-31 wells will be drilled, completed and operated using closed-loop pitless systems for containment and/or reuse of all drilling, completion, flowback and produced fluids. Applicant will reuse fluids to the maximum extent practicable, with the City's understanding that Applicant is limited in its ability to reuse all fluids. All above ground storage, including tanks and separators, for use during drilling, completion, flowback and other produced fluids will have secondary containment. The secondary containment system used around the tank battery is an engineered steel panel containment wall with a full impermeable synthetic liner under all tanks and up the sides of the containment wall. This system is consistent across our operations, no difference between site specific and field wide design. (See *Operator Agreement, Exhibit C, BMP No. 5; Operations Plan and Site Plan.*)
10. **Color/Paint Color:** All permanent above ground associated production equipment, structures and stationary equipment for the Blue 3-65 33-32-31 will be painted in a tan or brown matte finish unless a different color is necessary for safety per regulations. (See *Operator Agreement, Exhibit C, BMP No. 8; Operations Plan; and Site Plan Note No. 3.*)
11. **Combustion Devices:** Combustors will be available at the Blue 3-65 33-32-31 Well Site during the entire production phase to eliminate fugitive emissions for maintenance or emergency use only. The device will be fired using natural gas and operate with a 98% or higher hydrocarbon destruction efficiency. The device will be designed and operated in a manner that will ensure no visible emissions during normal operation. Visible emissions do

not include radiant energy or water vapor. (See *Operator Agreement, Exhibit C, BMP No. 19; Operations Plan; Air Quality Plan and Site Plan (Production page) Best Management Practices Note No. 7.*)

- 12. Containment Berms:** A containment system capable of containing one and one-half times (150%) the capacity of the largest vessel, plus sufficient freeboard to prevent overflow will be constructed around all permanent tanks at the Blue 3-65 33-32-31 Well Site. The containment system will be constructed of a steel-rim berm and lined with a synthetic or engineered liner, mechanically connected to the steel-rim which will surround all primary containment vessels. When used, temporary vessels will have secondary containment constructed from lined earthen berms or pre-engineered, duck-pond style containment systems. All berms and containment devices will be inspected quarterly. (See *Operator Agreement, Exhibit C, BMP No. 40; Site Plan; Notes #2, Best Management Practices Note No. 2.*)
- 13. Cultural and Historical Resource Protection:** Applicant has not discovered any landmark buildings or sites within the disturbance area for the Blue 3-65 33-32-31. Construction, alteration, removal or demolition of a building or feature or any changes that would impair the cultural or historical association of the landmark building, landmark site or historical district pursuant to those qualities depicted in the City of Aurora Municipal Code will not be made without first obtaining approval. If there is a discovery of historical artifacts at the Blue 3-65 33-32-31 Well Site, the City will be notified. (See *Operator Agreement, Exhibit C, BMP No. 47 and Operations Plan.*)
- 14. Discharge Valves:** Open-ended discharge valves on all storage tanks and other containers within the Blue 3-65 33-32-31 Well Site will be secured, capped, or blind-flanged, and so they will not be accessible to the general public. The Applicant will ensure that all open-ended discharge valves within the Well Site are placed within the interior of the secondary containment area. (See *Operator Agreement, Exhibit C, BMP No. 11 and Operations Plan.*)
- 15. Electric Equipment:** Pursuant to the OA, electric equipment is required at sites shown on Exhibit A-3. The Blue 3-65 33-32-31 well site is identified on Exhibit A-3 and therefore electrical drilling rig power is required. And application for drilling rig power is currently pending with Xcel Energy. (See *Operator Agreement, Exhibit C, BMP No. 13 and Operations Plan.*)
- 16. Events or Incidents:** In the event of a medical, fire or explosion incident on the Blue 3-65 33-32-31 Well Site, 911 will be called and local emergency services will be dispatched. Any COGCC reportable safety events or OSHA reportable injuries at the Blue 3-65 33-32-31 Well Site will be reported to the City within 24 hours. (See *Operator Agreement, Exhibit C, BMP No. 37 and Emergency Response Plan.*)
- 17. Emergency Response Plan:** A site specific Emergency Response Plan (ERP) has been submitted for this site. The Applicant's emergency response will be uniform and will be executed in the format outlined in the ERP for all emergencies. A revised Emergency Response Plan has been provided to the City. The ERP provides 24-hour contact information for persons responsible for emergency field operations, information on evacuation routes and locations of healthcare facilities anticipated to be used as well as a detailed plan for response to emergencies that may include any or all of the following: explosions, fires, gas, oil or water pipeline leaks or ruptures. The ERP also provides guidance on training and coordination and communication with City emergency personnel and departments. (See *Operator Agreement, Exhibit C, BMP No. 14, and Emergency Response Plan.*)
- 18. Fencing:** Secure, opaque fencing will be installed at the Blue 3-65 33-32-31 Well Site after

interim reclamation has been completed. This fencing will be eight feet tall.
(See *Operator Agreement, Exhibit C, BMP No. 17 and Site Plan.*)

- 19. Flammable Material:** The Blue 3-65 33-32-31 Well Site will be maintained in a manner so to ensure that all ground within twenty-five (25) feet of any tank or other structure containing flammable or combustible materials will be kept free of dry weeds, grass, rubbish or landscaping. (See *Operations Plan and Operator Agreement, Exhibit C, BMP No. 18.*)
- 20. Flowlines:** All flowlines (the pipeline connecting the wellhead to the production facility) are contained entirely within the boundary of the well pad. No off-location flowlines as defined and set forth in COGCC Rule 1101, will be utilized. (See *Operations Plan, Operator Agreement, Exhibit C, BMP No. 42 and Site Plan; Notes #11.*)
- 21. Fugitive Dust Suppression:** Dust associated with Site activities and traffic on roads will be minimized throughout all phases such that there are no visible dust emissions from sites or roads to the maximum extent practicable given wind conditions. Numerous mitigation measures are in place to minimize dust emissions including (but not limited to): application of fresh water to roads and ground during earth moving activities, curtailment of work during windy conditions and re-establishment of vegetation on disturbed areas that are not graveled. (See *Operations Plan and Operator Agreement, Exhibit C, BMP No. 12, Dust Suppression Plan.*)
- 22. General Maintenance:** All equipment will be operated and maintained pursuant to manufacture specifications consistent with technological limitations and reasonable and customary maintenance practices. In addition to automated shutdowns, preventative maintenance and best practices are in place to prevent leaks from vessels. These include (but are not limited to) yearly shut-downs and visual inspections of each 2-phase and 3-phase vessel on site, yearly non-destructive testing of each 2-phase and 3-phase vessel shell and head on site, internal coating to prevent corrosion, weekly environmental checks by operations personnel, non-destructive testing of all water piping, and non-destructive testing of various flowlines to monitor for thin-walled piping caused by erosion or corrosion. (See *Operator Agreement, Exhibit C, BMP No. 35 and Operations Plan.*)
- 23. Landscaping:** Landscaping will be performed on the Blue 3-65 33-32-31 once reasonable access to a City water main is within four hundred feet (400') of the Well Site. (See *Operations Plan and Operator Agreement, Exhibit C, BMP No. 20, and Site Plan: Landscape Plan Sheet(s).*)
- 24. Lighting:** Lighting is only used during the Drilling and Completion Phases of operations. No permanent lighting will be installed. All lighting used will be situated so that is downcast and does not shine beyond the boundary of the oil and gas operations area. (See *Operations Plan and Operator Agreement, Exhibit C, BMP No. 21 and Lighting Plan, Site Plan; Photometric Sheet(s).*)
- 25. Low Profile Tanks:** All tanks installed on the well site will be no taller than sixteen feet (16'). (See *Operations Plan and Operator Agreement, Exhibit C, BMP No. 9, and Site Plan: Production Equipment Representative Table.*)
- 26. Maintenance of Machinery:** Routine field maintenance of vehicles and mobile machinery will not be performed within 500 feet of navigable waters of the United States. All fueling will occur over impervious material. The Maintenance Supervisor and all supporting personnel will be responsible for compliance with BMP No. 22. (See *Operator Agreement, Exhibit C, BMP No. 22 and Operations Plan.*)
- 27. Mud Tracking:** The Applicant will take all practicable measures to ensure that vehicles do not track mud or debris onto City streets. If mud or debris is deposited on City streets the

Applicant will clean the streets in a reasonable amount of time, or within 24 hours of notice by the City. If the clean-up cannot be done or is postponed the Applicant will notify the City. Further information may be found in the Operations Plan. This will be accomplished by the Construction Supervisor, Drilling Superintendent, Completions Supervisor and Maintenance Supervisor who understand this requirement and has the responsibility to ensure their teams will meet this requirement. (See *Operator Agreement, Exhibit C, BMP No. 23 and Operations Plan.*)

28. Noise Management Plan/Noise Mitigation: The Applicant will comply with the sound limitation regulations set forth in the COGCC 800 Series Aesthetic and Noise Control regulations. The Applicant had Behrens Engineering, a third-party engineering firm, perform an environmental noise impact assessment and will follow its mitigation recommendations to stay in compliance with the COGCC 800 series requirements.

- Per Section 2.2 of the OA, Applicant is required to conduct a baseline noise study if a New Well is planned within 2,640' of 5 Residential Building Units (RBU) or 1 High Occupancy Building (HOBu). There are no RBU's within 2,640' of the Blue 3-65 33-32-31 Well Site, and there are no HOBu's within 2,640' of the Blue 3-65 33-32-31 Well Site, so a baseline noise study is not required.
- Per Section 2.3 of the OA, Applicant is required to use noise mitigation if a New Well is within the area identified on Exhibit A-2 to the OA or if the New Well is within 1,320' of a RBU or 1,500' of a HOBu. There are no (0) RBU's within 1,320' of the Blue 3-65 33-32-31 Well Site, and there are no (0) HOBu's within 1,500' of the Blue 3-65 33-32-31 Well Site. The Blue 3-65 33-32-31 Well Site is not located within the area identified on Exhibit A-2 to the OA, so Applicant will not use noise mitigation during the Drilling and Completion Phases for the Blue 3-65 33-32-31 Well Site.
- Per Section 2.4 of the OA, Applicant may be required to conduct additional noise mitigation for New Wells within 1,320' of a RBU. As stated above, there are no RBU's within 1,320' of the Blue 3-65 33-32-31 Well Site.
- Per Section 2.6 of the OA, Applicant is required to address C scale noise/vibration if a New Well is within 1,320' of a RBU or 1,500' of a HOBu. As stated above, there are no (0) RBU's within 1,320' of the Blue 3-65 33-32-31 Well Site, and there are no (0) HOBu's within 1,500' of the Blue 3-65 33-32-31 Well Site.

Due to the lack of RBUs or HOBUs triggering the need for a sound study for this location the Applicant did not have a full length sound study performed.

- 29. Notifications to the City:** *(Regarding Commencement of Operations and Phases of Operations/ Notifications to the City Regarding Commencement of Construction at CGF and Pipeline Operations/Notifications to the City)* The Applicant will notify the City, through the designated City representative, no less than 30 days prior to the commencement of the Construction for the Blue 3-65 33-32-31 (unless the Construction Phase commences within 45 days of the approval of the applicable Form 2, Form 2A, or local permit), Drilling, or Completion Phases, and 30 days prior to recompleting, re-drilling, or plugging and abandonment of the well. Operator will provide all required notifications under the OA to the City by notifying Daniel Brotzman by e-mail at dbrotzman@auroragov.org, Christine McKenney by e-mail at CMcKenne@auroragov.org, and to Jeffrey Moore by e-mail at jsmoore@auroragov.org. *(See Operator Agreement, Exhibit C, BMP No. 4.)*
- 30. Noxious Weed Control:** All disturbed ground not needed for subsequent operations for Blue 3-65 33-32-31, including stockpiles and cut and fill slopes, are seeded and mulched in accordance with the permits. Approved weed-free seed mix is used, and these areas are monitored and maintained for weed establishment for the life of the well. *(See Operator Agreement, Exhibit C, BMP No. 33, Weed Control Plan and Operations Plan.)*
- 31. Odor:** Applicant will mitigate odors by routing to closed loop systems to the maximum extent practicable. If the Applicant receives complaints from a Residential Building within 1,320 feet from the site, Applicant will take measures to mitigate the odor within 24 hours, based on the specific circumstances. Further detail may be found in the Air Quality Plan and Operations Plan provided with this application. *(See Operator Agreement, Exhibit C, BMP No. 36, Air Quality Plan and Operations Plan.)*
- 32. PHA-Hazard and Operability Study:** The Applicant has provided a letter that the engineer of record has incorporated all applicable PHA-HAZOP recommendations in the design. On January 29, 2018 a PHA-HAZOP was facilitated by Cyndee R. Clouse, a certified facilitator, and conducted by a multi-disciplined team for the Multi-Well Pad Facility with Individual Separation. While the facility design being evaluated does not fall under Process Safety Management (PSM) pursuant to OSHA 29 CFR 1910.119, the HAZOP process was similar. This study consisted of a risk assessment utilizing methodology commonly used while conducting a Process Hazard Analysis (PHA) with a Layers of Protection Analysis (LOPA). *(See Operator Agreement, Exhibit C, BMP No. 44 and PHA- HAZOP Letter.)*
- 33. Plugged and Decommissioned Well Testing:** Pursuant to COGCC regulation, an offset well evaluation for the Blue 3-65 33-32-31 will be submitted to the COGCC for review. This evaluation reveals that one (1) Previously Abandoned well (the B-1 FLADER INDUSTRIES INC) is located within one thousand five hundred feet (1,500') of the proposed well tract for any New Well proposed to be drilled from the Blue 3-65 33-32-31 Location. Pursuant to the OA, notice was sent to the Surface Owner requesting access to the property for the purpose of testing the Previously Abandoned Well. The results of the Applicants inquiry will be provided to the City. *(See Operator Agreement, Exhibit C, BMP No. 43 and Operations Plan.)*
- 34. Reclamation:** Because the Blue 3-65 33-32-31 is surrounded by rangeland, pursuant to COGCC rule 1003(b.), Interim Reclamation will occur within six months of first production. The Applicant will comply with COGCC Rules 1000 series governing the reclamation of sites. An ***Interim Reclamation Plan*** has been provided within the Site Plan for this application further detailing site- specific reclamation that will take place following the well(s) being put into production. Additional information regarding Interim reclamation may also be found in the Storm Water Management Plan (SWMP), submitted to the Public Works Department .

A **Final Reclamation Plan** will be submitted to the City concurrently with the Applicant's plugging and abandonment permit submission to the COGCC. Areas reaching substantial completion of grading and topsoil placement operations will be drill seeded and crimp mulched within 14 days of substantial completion of grading and topsoil operations. If an incomplete area is to remain inactive for longer than 30 days, it will be drill seeded and crimp mulched or otherwise landscaped within 14 days from the suspension or completion of land disturbance activities. (See Operator Agreement, Exhibit C, BMP No. 39 and Operations Plan.)

- 35. Reduced Emission Completions (Commonly known as Green Completions):** The Applicant will comply with the EPA Reduced Emission Completions rules (under 40 CFR 60 Subpart OOOO and OOOOa) for oil and gas wells. Applicant will apply best management practices to safely maximize resource recovery and minimize releases to the environment. Applicant was an early adopter of reduced emissions completions (green completions), a charter member of the Natural Gas Star program, and is committed to reducing emissions from flaring and venting. For all projects in the City including the Blue 3-65 33-32-31 project, we plan to have a gas pipeline installed and ready to accept natural gas production immediately after initial flowback of wells on this site. Further detail may be found in the Operations Plan and the Air Quality Plan provided with this application. (See Operator Agreement, Exhibit C, BMP No. 16, Operations Plan and Air Quality Plan.)
- 36. Removal of Debris:** The Applicant will ensure that all construction-related debris is removed from the Well Site for proper disposal in a timely manner. The Applicant will ensure that Well Site is reasonably free of debris and excess materials at all times during all phases of operations. Applicant shall not stockpile debris at the Well Sites. (See Operator Agreement, Exhibit C, BMP No. 24 and Operations Plan.)
- 37. Removal of Equipment:** At the end of the flowback stage of development (the beginning of the Production Phase), all temporary equipment will be removed from the Blue 3-65 33-32-31 site (within 30 days), leaving only the wellhead(s) and the permanent production facilities, including, separators, storage tanks and emissions control equipment. No permanent storage of removable equipment will occur on any well site. (See Operator Agreement, Exhibit C, BMP No. 25 and Operations Plan.)
- 38. Road Repairs:** Road repairs will be addressed pursuant to the terms of Road Maintenance Agreement (RMA) executed January 3, 2018 and included with this submission. An amendment to the RMA was executed by the city and ConocoPhillips December 18, 2019. Pursuant to the RMA, the Applicant has agreed to pay road maintenance fees in lieu of road repair maintenance for the life of the well. The Applicant and the City have agreed that the Applicant will pay an initial fee of \$7,500 per well for road maintenance fees. During the Drilling and Completions Phases of development, the City will be responsible for frequent inspections of the Haul Route. If it is determined by City staff that road repairs are necessary, the City will promptly notify the Applicant, and the Applicant will provide a deposit of 125% of the estimated cost of repairs within 10 business days. (See Operator Agreement, Exhibit C, BMP No. 29, Operations Plan and Road Maintenance Agreement.)
- 39. Spills:** The Applicant will notify the City of any spill of materials on permeable ground at Blue 3-65 33-32-31 Well Site that has a reportable quantity under any applicable laws. Applicant will provide a copy of the self-reporting submissions that the Applicant provides to the COGCC due to any spill on the Well Site. Further detail may be found in the Spill Prevention, Control and Countermeasure Plan (SPCC) provided with this application. (See Operator Agreement, Exhibit C, BMP No. 38 and Operations Plan.)

- 40. Water Quality Monitoring Plan/Groundwater Pollution Mitigation:** The Applicant will not begin construction of the Blue 3-65 33-32-31 Well Site until a Stormwater Water Management Plan (SWMP) is approved by the City and a stormwater quality discharge permit has been acquired for the Well Site. Applicant will perform monthly inspections of stormwater BMPs, or after a storm event. Further detail may be found in the SWMP provided with this application. (See Operator Agreement, Exhibit C, BMP No. 30, Operations Plan and Stormwater Management Plan.)
- 41. Trailers:** The Applicant will not place any permanent trailers on the Blue 3-65 33-32-31 Well Site. The Applicant will have temporary construction trailers on site during the Construction, Drilling and Completion phases of development and up to 6 months following the Completions phase of development. (See Operator Agreement, Exhibit C, BMP No. 26, Operations Plan, and Site Plan (Drilling sheet)).
- 42. Transportation and Circulation:** The Applicant has provided the Traffic Management Plan and Traffic Letter with this application. The Blue 3-65 33-32-31 haul route is depicted on the Haul Route Sheet of the site plan. (See Operator Agreement, Exhibit C, BMP No. 27 and Road Maintenance Agreement.)
- 43. Transportation and Storage of Fluids:** The Applicant will utilize pipelines for the transportation of hydrocarbons for the Blue 3-65 33-32-31. Non-potable water used for hydraulic fracturing will be transported by above-ground water supply line, typically 12" in diameter and typically made of synthetic rubber or similar "hose" material. They are used for the transfer of water from an identified water source to support company's hydraulic fracturing operations. Permanent tanks will be used for storage and transportation of produced water, and for storage of oil under downtime due to third parties. All third-party trucking operations will be subject to the Applicant's HSE policies and procedures. (See Operator Agreement, Exhibit C, BMP No. 3, Site Plan (Operations Plan page), and the Water Delivery Method.)
- 44. Tree Mitigation:** There are no trees required to be removed at the Blue 3-65 33-32-31 Well Site. (See Operator Agreement, Exhibit C, BMP No. 10, and Operations Plan.)
- 45. Visual Mitigation:** Operator Agreement, Exhibit C, BMP No. 49 applies to four specific Well Sites, the Blue 3-65 33-32-31 is not one of these Well Sites. (See Operator Agreement, Exhibit C, BMP No. 49.)
- 46. Wastewater and Waste Management:** All fluids and waste will be contained and disposed of at licensed disposal or recycling facilities outside of the City. Applicant will provide a Spill Prevention, Control and Countermeasure Plan (SPCC) with the application. (See Operator Agreement, Exhibit C, BMP No. 31, Waste Management Plan and the SPCC Plan attached as an appendix thereto, and Operations Plan.
- 47. Water Protection Requirements:** Identification of sensitive water resources begins in the pre-development planning stage of the project. The proximity of wells to existing City infrastructure is depicted on the Adjacent Visible Improvements sheet of the Site Plan. BMP No. 48 describes that all new wells will be located a minimum of 500' from City Infrastructure unless vibratory studies confirm that no negative impacts occur to the City Infrastructure, in this case the wells may be setback 350' from City Infrastructure. The results of a vibratory study were provided to the City of Aurora Water Department and it was confirmed that a 350' setback was acceptable. See Operator Agreement, Exhibit C, BMP No. 48 and Operations Plan.)

48. Water Quality Monitoring Plan/Groundwater Pollution Mitigation:

The Applicant will sample existing water wells prior to drilling activities and will continue to sample existing or installed wells through the Production Phase, until final Reclamation Phase is completed for the well site to ensure that groundwater has not been contaminated by the Applicant's activity. As the well is constructed, concentric layers of steel casing and cement form the barrier to protect groundwater resources from the contents that will later flow inside the well mitigating any potential pollution for groundwater pollution. The depth of the casing will extend to the deepest known depth of the freshwater aquifers. Surface casing is set at +/-2600 ft TVD and cemented to surface. The production casing is a long string and is cemented to 200 ft inside the surface casing by design. If needed during the Drilling Phase, Applicant shall run temperature or cement log if surface casing cement is not circulated to the surface to ensure integrity. Completion well preparation tests production casing to 9800 psi before opening toe sleeve or perforating toe. If pressure test is unsuccessful (i.e., the toe valve leaks) a plug is deployed to test to 9800 psi as deep as the plug will go on wireline. During the production phase the Applicant will monitor casing pressures using pressure transmitters in the surface. Bradenhead testing will be performed during the completions phase with COGCC staff onsite. (See *Operator Agreement, Exhibit C, BMP No. 46, Fieldwide Water Quality Monitoring Plan, Site Specific Water Quality Monitor location on the Site Plan and Operations Plan.*)

49. Water Supply: Pursuant to the terms of the Agreement for Delivery of Reusable Raw Water effective September 26, 2017 between the City of Aurora and ConocoPhillips Company the Applicant will take delivery from the City of water to be used during the Drilling, Completions, and Production Phases of development. Further details may be found within the Agreement for Delivery of Reusable Raw Water and in the Water Delivery Method. Operator has a site-specific Water Delivery Plan and Method that has been provided to the City with this application. These temporary, above-ground water supply lines ("Lay Flat Lines") are typically 12" in diameter and made of synthetic rubber or similar "hose" material. They are used for the transfer of water from an identified water source to support hydraulic fracturing operations. (See *Operator Agreement, Exhibit C, BMP No. 32, Agreement for Delivery of Reusable Raw Water effective September 26, 2017 between the City of Aurora and ConocoPhillips Company, and Operations Plan.*)

NEIGHBORHOOD MEETING RESULTS

Will be provided following Neighborhood Meeting
Scheduled for September 13, 2021

TYPICAL PHOTOS



AURORA COLORADO OIL & GAS OPERATIONS
DRILLING RIG

CONOCOPHILLIPS COMPANY

ATTN: KATHY DENZER
34501 E. QUINCY AVE., BUILDING 1
WATKINS, CO 80137
PHONE: (303) 268-3773



10333 E. Dry Creek Rd.
Suite 240
Englewood, CO 80112
Tel: (720) 482-9526
Fax: (720) 482-9546



AURORA COLORADO OIL & GAS OPERATIONS
DRILLING RIG WITH AUTOMATIC PIPE HANDLING

CONOCOPHILLIPS COMPANY

ATTN: KATHY DENZER
34501 E. QUINCY AVE., BUILDING 1
WATKINS, CO 80137
PHONE: (303) 268-3773



10333 E. Dry Creek Rd.
Suite 240
Englewood, CO 80112
Tel: (720)482-9526
Fax: (720)482-9546



AURORA COLORADO OIL & GAS OPERATIONS
DIESEL FUEL AND GENERATORS WITH SECONDARY CONTAINMENT

CONOCOPHILLIPS COMPANY

ATTN: KATHY DENZER
34501 E. QUINCY AVE., BUILDING 1
WATKINS, CO 80137
PHONE: (303) 268-3773



10333 E. Dry Creek Rd.
Suite 240
Englewood, CO 80112
Tel: (720)482-9526
Fax: (720)482-9546



AURORA COLORADO OIL & GAS OPERATIONS
MATERIALS STORAGE WITH SECONDARY CONTAINMENT

CONOCOPHILLIPS COMPANY

ATTN: KATHY DENZER
34501 E. QUINCY AVE., BUILDING 1
WATKINS, CO 80137
PHONE: (303) 268-3773



10333 E. Dry Creek Rd.
Suite 240
Englewood, CO 80112
Tel: (720)482-9526
Fax: (720)482-9546



AURORA COLORADO OIL & GAS OPERATIONS
PIPE STORAGE RACK

CONOCOPHILLIPS COMPANY

ATTN: KATHY DENZER
34501 E. QUINCY AVE., BUILDING 1
WATKINS, CO 80137
PHONE: (303) 268-3773



10333 E. Dry Creek Rd.
Suite 240
Englewood, CO 80112
Tel: (720)482-9526
Fax: (720)482-9546



AURORA COLORADO OIL & GAS OPERATIONS
OFFICES & TEMPORARY LIVING QUARTERS

CONOCOPHILLIPS COMPANY

ATTN: KATHY DENZER
34501 E. QUINCY AVE., BUILDING 1
WATKINS, CO 80137
PHONE: (303) 268-3773



10333 E. Dry Creek Rd.
Suite 240
Englewood, CO 80112
Tel: (720)482-9526
Fax: (720)482-9546



SAND CASTLES AND TRUCKS

TRUCKS AND PUMPS



AURORA COLORADO OIL & GAS OPERATIONS
COMPLETION SITE

CONOCOPHILLIPS COMPANY

ATTN: KATHY DENZER
34501 E. QUINCY AVE., BUILDING 1
WATKINS, CO 80137
PHONE: (303) 268-3773



10333 E. Dry Creek Rd.
Suite 240
Englewood, CO 80112
Tel: (720)482-9526
Fax: (720)482-9546



AURORA COLORADO OIL & GAS OPERATIONS
TEMPORARY SOUND MITIGATION WALLS

CONOCOPHILLIPS COMPANY

ATTN: KATHY DENZER
34501 E. QUINCY AVE., BUILDING 1
WATKINS, CO 80137
PHONE: (303) 268-3773



10333 E. Dry Creek Rd.
Suite 240
Englewood, CO 80112
Tel: (720)482-9526
Fax: (720)482-9546



AURORA COLORADO OIL & GAS OPERATIONS
MOBILE TORNADO SHELTER

CONOCOPHILLIPS COMPANY

ATTN: KATHY DENZER
34501 E. QUINCY AVE., BUILDING 1
WATKINS, CO 80137
PHONE: (303) 268-3773

CVL
CONSULTANTS
CIVIL ENGINEERING LAND SURVEYING

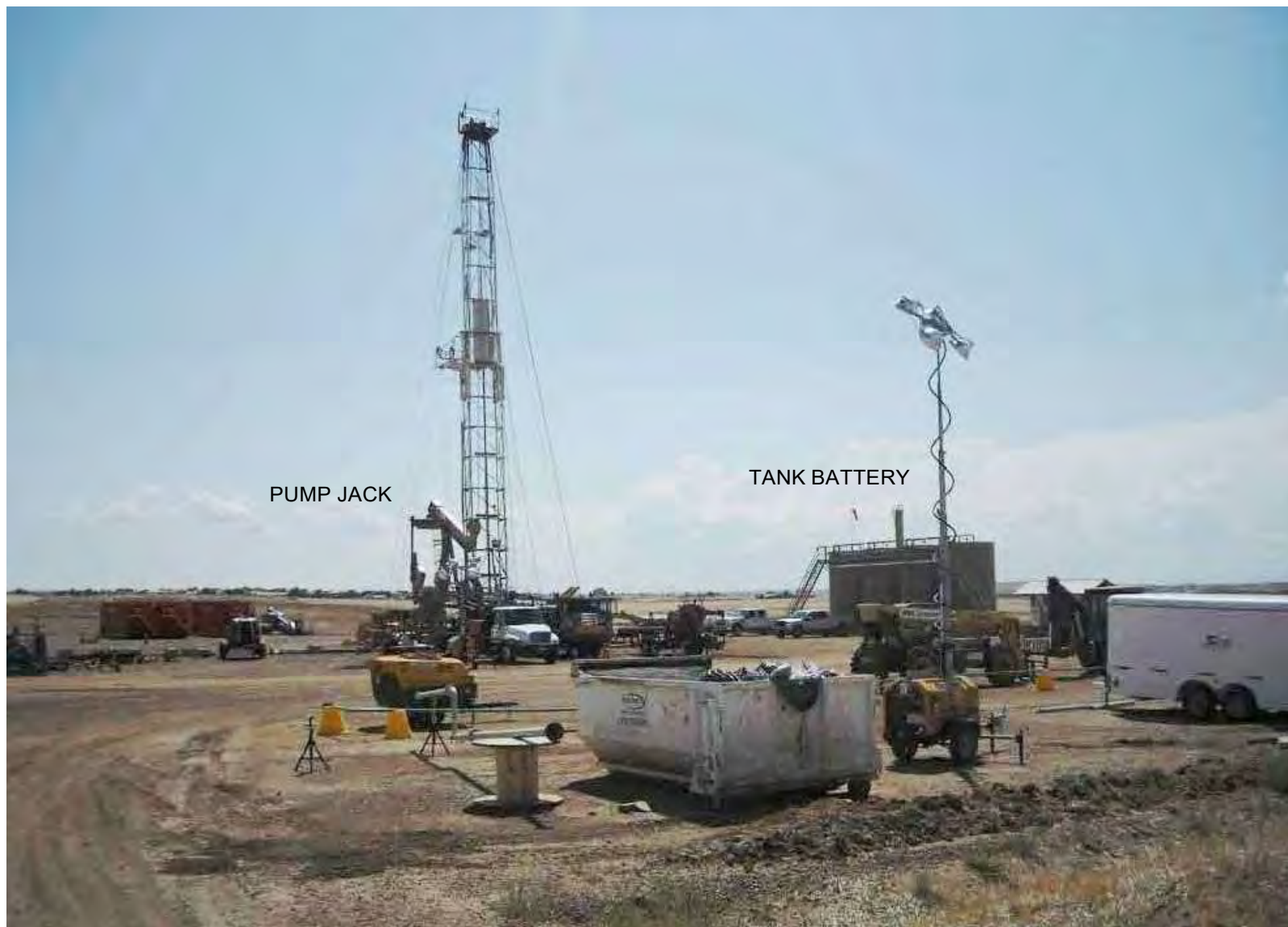
10333 E. Dry Creek Rd.
Suite 240
Englewood, CO 80112
Tel: (720)482-9526
Fax: (720)482-9546



AURORA COLORADO OIL & GAS OPERATIONS
PRODUCTION FACILITY

CONOCOPHILLIPS COMPANY
ATTN: KATHY DENZER
34501 E. QUINCY AVE., BUILDING 1
WATKINS, CO 80137





AURORA COLORADO OIL & GAS OPERATIONS
WORKOVER RIG-PRODUCTION SETTING
CONOCOPHILLIPS COMPANY





AURORA COLORADO OIL & GAS OPERATIONS
CLOSED LOOP DRILLING SYSTEM (MUD TANKS)

CONOCOPHILLIPS COMPANY

ATTN: KATHY DENZER
34501 E. QUINCY AVE., BUILDING 1
WATKINS, CO 80137
PHONE: (303) 268-3773



10333 E. Dry Creek Rd.
Suite 240
Englewood, CO 80112
Tel: (720)482-9526
Fax: (720)482-9546



AURORA COLORADO OIL & GAS OPERATIONS
SIGNAGE

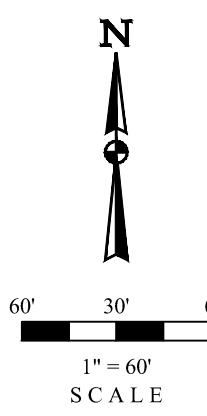
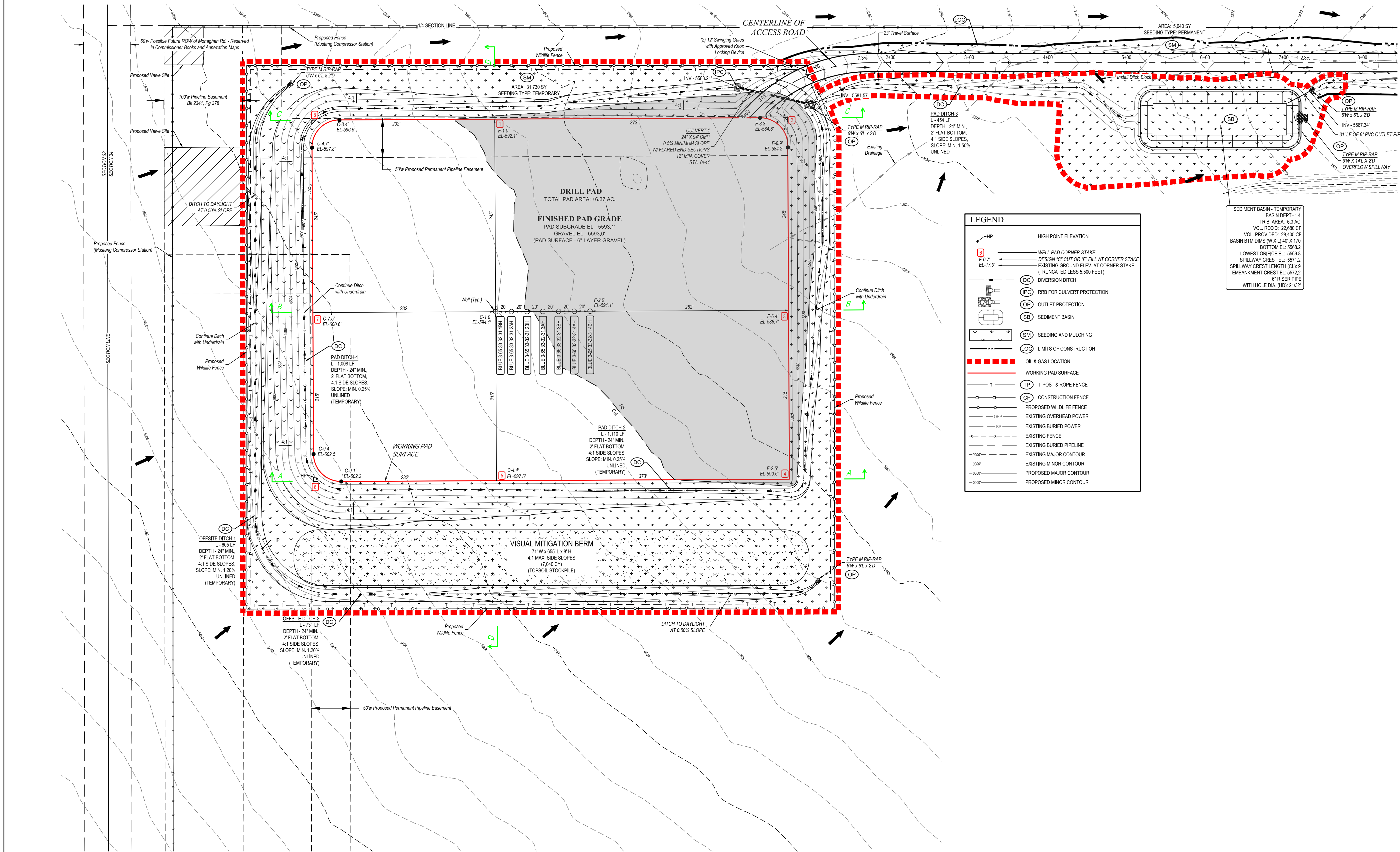
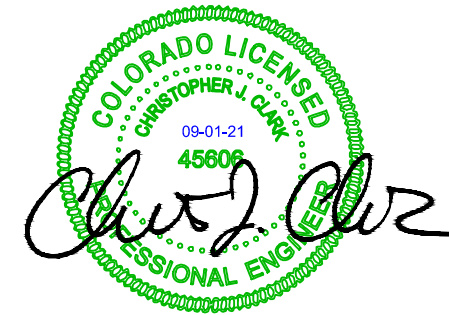
CONOCOPHILLIPS COMPANY

ATTN: KATHY DENZER
34501 E. QUINCY AVE., BUILDING 1
WATKINS, CO 80137
PHONE: (303) 268-3773



10333 E. Dry Creek Rd.
Suite 240
Englewood, CO 80112
Tel: (720)482-9526
Fax: (720)482-9546

PLAT PACKAGE



LEGEND	
HP	HIGH POINT ELEVATION
BP	BOTTOM POINT ELEVATION
W	WELL PAD CORNER STAKE
F-0.7' EL-17.0'	DESIGN "C" CUT OR 1" FILL AT CORNER STAKE (TRUNCATED LESS 5.500 FEET)
DC	DIVERSION DITCH
IPD	RRB FOR CULVERT PROTECTION
OP	OUTLET PROTECTION
SB	SEDIMENT BASIN
SM	SEEDING AND MULCHING
LOC	LIMITS OF CONSTRUCTION
---	OIL & GAS LOCATION
---	WORKING PAD SURFACE
T	T-POST & ROPE FENCE
CF	CONSTRUCTION FENCE
---	PROPOSED WILDLIFE FENCE
---	EXISTING OVERHEAD POWER
---	EXISTING BURIED POWER
---	EXISTING FENCE
---	EXISTING BURIED PIPELINE
---	EXISTING MAJOR CONTOUR
---	EXISTING MINOR CONTOUR
---	PROPOSED MAJOR CONTOUR
---	PROPOSED MINOR CONTOUR

SEDIMENT BASIN - TEMPORARY
BASIN DEPTH: 4'
TRIB. AREA: 6.3 AC.
VOL. REQ'D: 22,880 CF
VOL. PROVIDED: 28,405 CF
BASIN BTM DIMS (W X L) 40' X 170'
BOTTOM EL: 5568.2'
LOWEST OFFPIPE EL: 5569.6'
SPILLWAY CREST EL: 5571.2'
SPILLWAY CREST LENGTH (CL): 9'
EMBANKMENT CREST EL: 5572.2'
6" RISER PIPE
WITH HOLE DIA. (HD): 21/32"

- NOTES:
- Rounded corners shown at 35' radius.
 - Contours shown at 2' intervals.
 - Cut/Fill slopes 4:1 (Typ).
 - Overall working pad surface = 605' x 460'

UETS, LLC
Corporate Office * 85 South 200 East
Vernal, UT 84078 * (435) 789-1017



REV: 3 09-01-21 J.J. (UPDATE: DISTURBANCE)

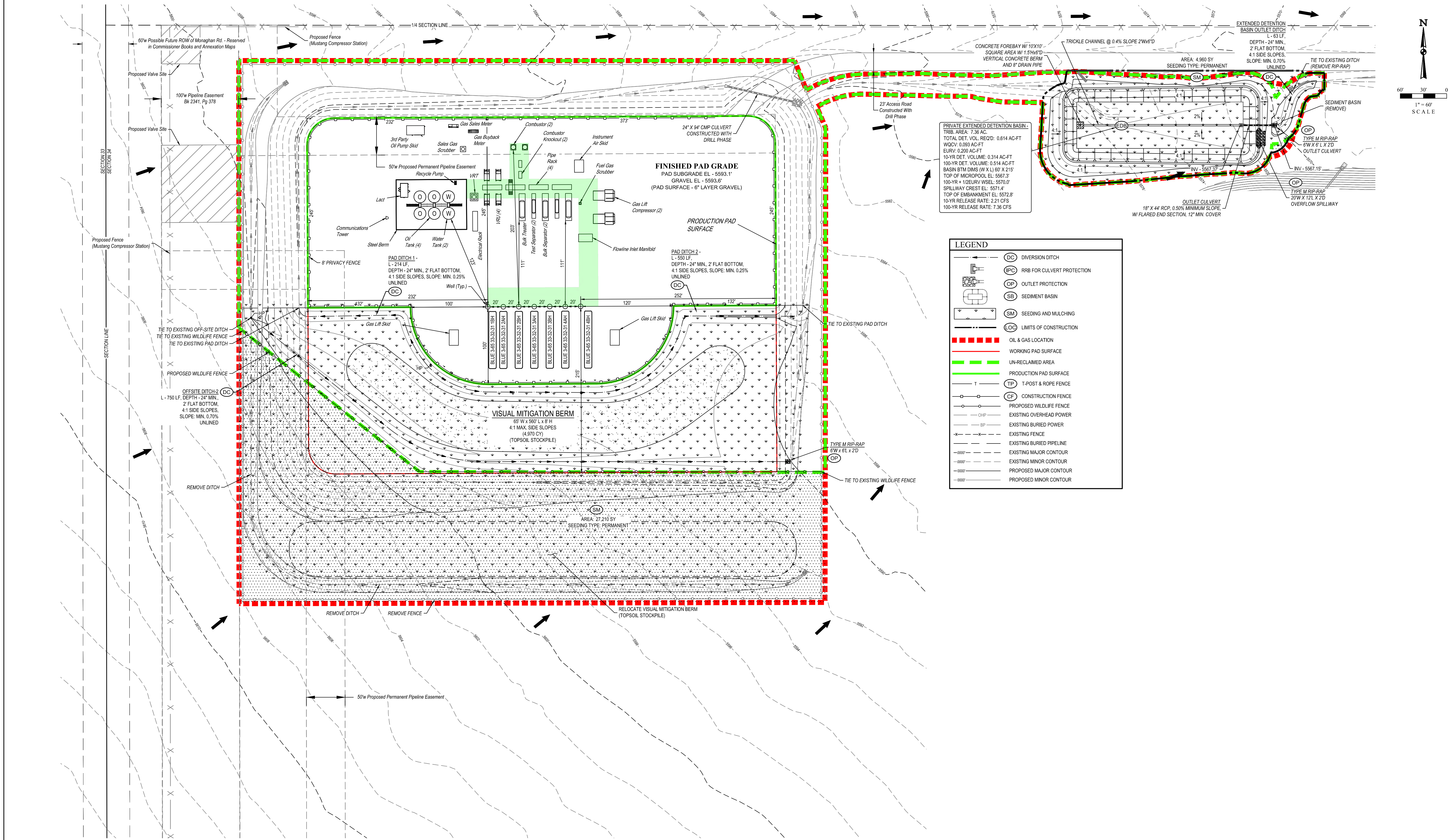
NOTE: Earthwork calculations require a fill @ some location stakes for balance. All fill is to be compacted to a minimum of 95% of the maximum dry density obtained by AASHTO method T-99.

WORKING PAD SURFACE DISTURBANCE = 6.371 ACRES
DISTURBANCE DURING CONSTRUCTION = 13.349 ACRES

CRESTONE PEAK
RESOURCES OPERATING LLC
BLUE 3-65 33-32-31 1BH, 2AH, 2BH, 3AH, 3BH, 4AH & 4BH
NW 1/4 SW 1/4, SECTION 34, T38S, R65W, 6th P.M.
ADAMS COUNTY, COLORADO

SURVEYED BY: MATT MILLER, O.R. 10-27-20 SCALE: 1" = 60'
DRAWN BY: C.J.VIE 11-24-20

CONSTRUCTION LAYOUT - PLAN VIEW



LEGEND


	DC DIVERSION DITCH
	ICP RRB FOR CULVERT PROTECTION
	OP OUTLET PROTECTION
	SB SEDIMENT BASIN
	SM SEEDING AND MULCHING
	LOC LIMITS OF CONSTRUCTION
	OL & GAS LOCATION
	WORKING PAD SURFACE
	UN-RECLAIMED AREA
	PRODUCTION PAD SURFACE
	TP T-POST & ROPE FENCE
	CF CONSTRUCTION FENCE
	PROPOSED WILDLIFE FENCE
	EXISTING OVERHEAD POWER
	EXISTING BURIED POWER
	EXISTING FENCE
	EXISTING BURIED PIPELINE
	EXISTING MAJOR CONTOUR
	EXISTING MINOR CONTOUR
	PROPOSED MAJOR CONTOUR
	PROPOSED MINOR CONTOUR

LEGEND
 Reclaimed Area
 Pipeline Corridor

APPROXIMATE UN-RECLAIMED DISTURBANCE = 9.891 ACRES
 APPROXIMATE RECLAIMED DISTURBANCE = 3.458 ACRES
 TOTAL OIL & GAS LOCATION = 13.349 ACRES

NOTES:
 • Contours shown at 2' intervals.
 • Overall working pad surface = 605' x 460'

UELS, LLC
 Corporate Office * 85 South 200 East
 Vernal, UT 84078 * (435) 789-1017



 UINTEAH

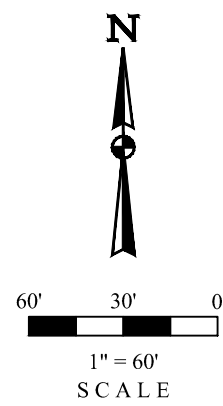
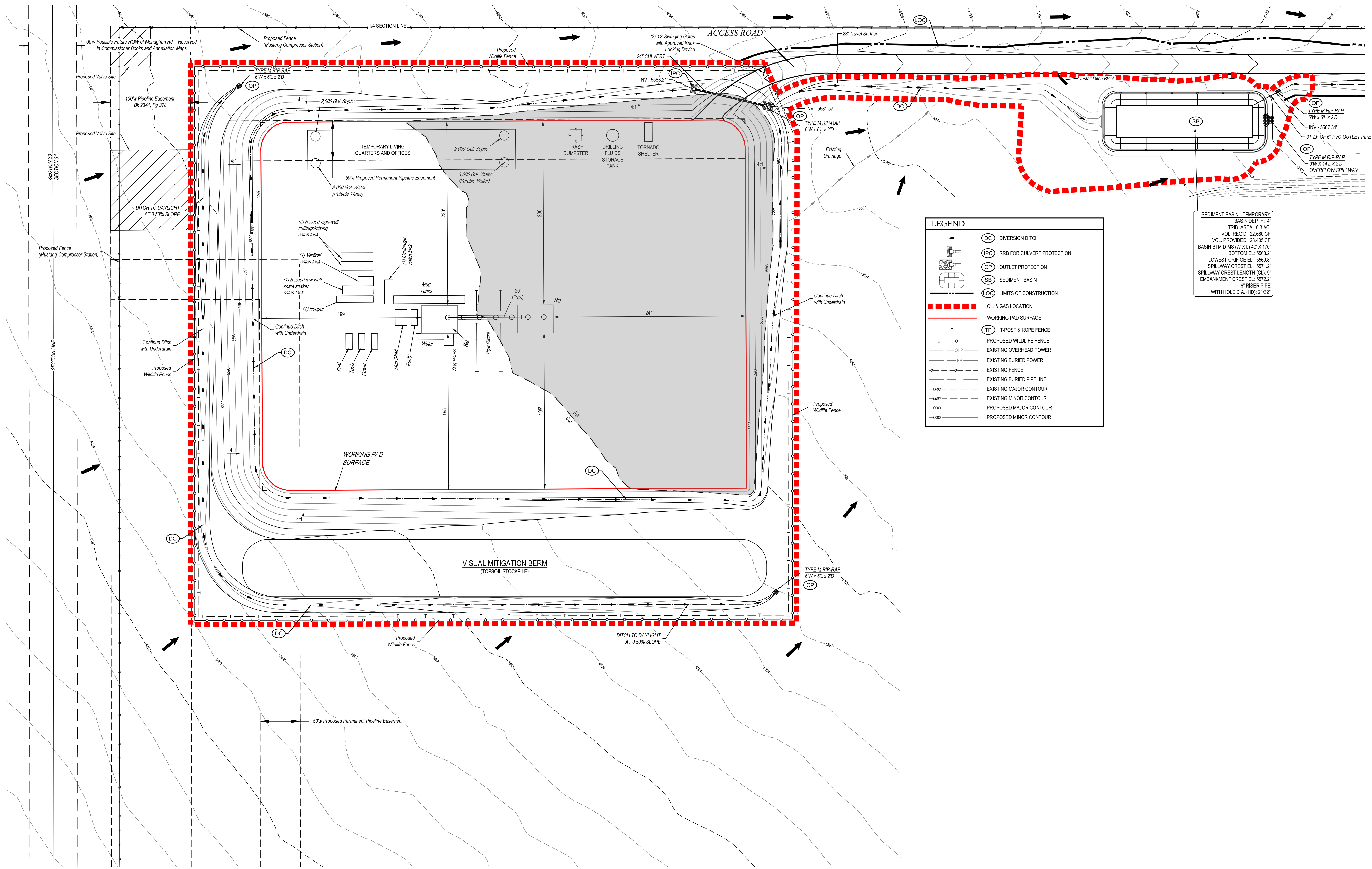
 ENGINEERING & LAND SURVEYING

REV: 4 09-01-21 J.J. (UPDATE DETENTION BASIN & DISTURBANCE)

CRESTONE PEAK
RESOURCES OPERATING LLC
 BLUE 3-65 33-32-31 1BH, 2AH, 2BH, 3AH, 3BH, 4AH, & 4BH
 NW 1/4 SW 1/4, SECTION 34, T38S, R65W, 6th P.M.
 ADAMS COUNTY, COLORADO

SURVEYED BY	MATT MILLER, O.R.	10-27-20	SCALE
DRAWN BY	C.J.VIE	11-24-20	1" = 100'

FACILITY LAYOUT



LEGEND

- DC DIVERSION DITCH
- IPC RRB FOR CULVERT PROTECTION
- OP OUTLET PROTECTION
- SB SEDIMENT BASIN
- LOC LIMITS OF CONSTRUCTION
- OIL & GAS LOCATION
- WORKING PAD SURFACE
- T T-POST & ROPE FENCE
- TP T-POST & ROPE FENCE
- PROPOSED WILDLIFE FENCE
- EXISTING OVERHEAD POWER
- EXISTING BURIED POWER
- EXISTING FENCE
- EXISTING BURIED PIPELINE
- EXISTING MAJOR CONTOUR
- EXISTING MINOR CONTOUR
- PROPOSED MAJOR CONTOUR
- PROPOSED MINOR CONTOUR

SEDIMENT BASIN - TEMPORARY
BASIN DEPTH: 4'
TRIB. AREA: 6.3 AC.
VOL. REQ'D: 22,880 CF
VOL. PROVIDED: 28,445 CF
BASIN BTM DIMS (W X L) 40' X 170'
BOTTOM EL: 5568.2'
LOWEST ORIFICE EL: 5569.0'
SPILLWAY CREST EL: 5571.2'
SPILLWAY CREST LENGTH (CL): 9'
EMBANKMENT CREST EL: 5572.2'
6" RISER PIPE
WITH HOLE DIA. (HD): 21/32"

NOTES

Overall working pad surface = 605' x 460'



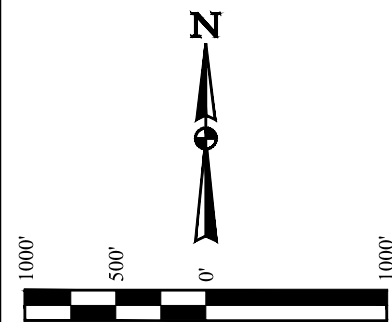
UELS, LLC
Corporate Office * 85 South 200 East
Vernal, UT 84078 * (435) 789-1017

REV: 3 09-01-21 J.J. (UPDATE DISTURBANCE)

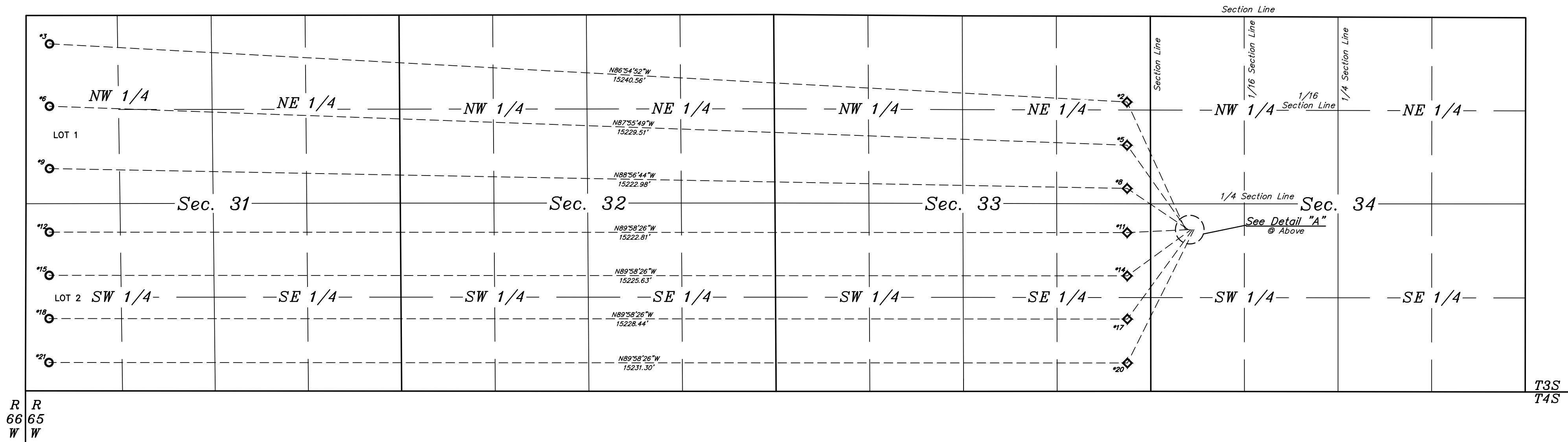
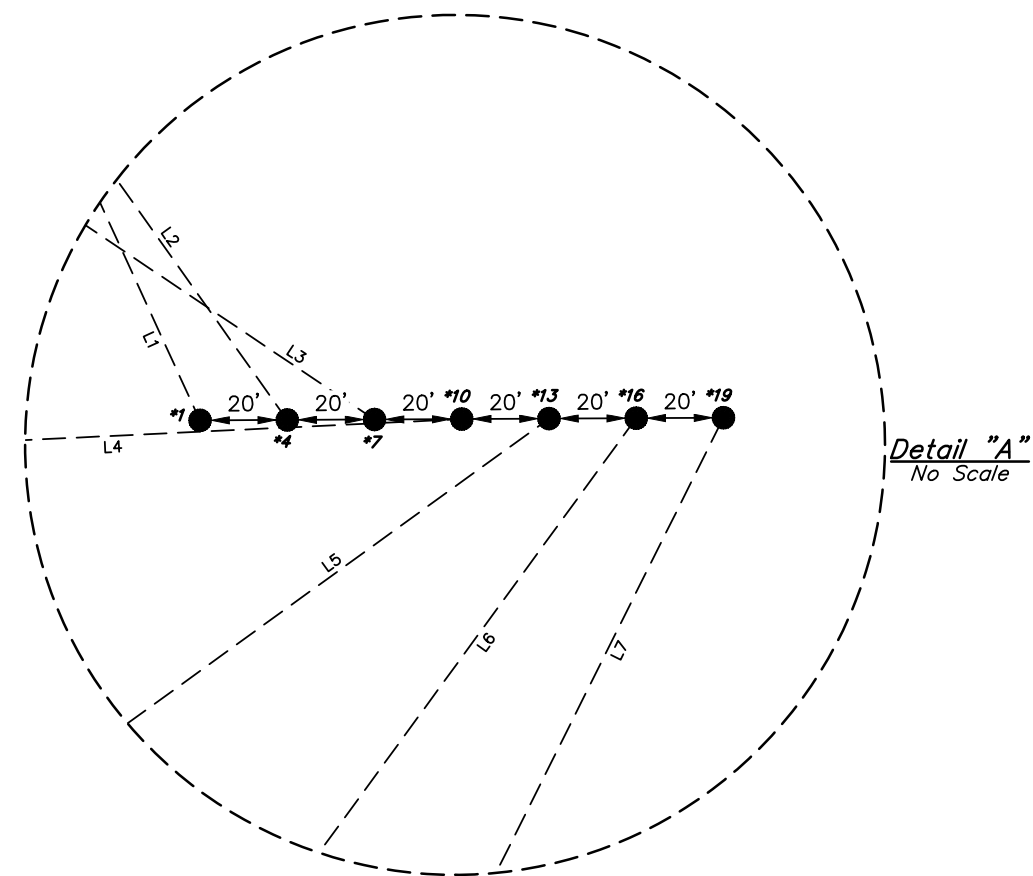
CRESTONE PEAK
RESOURCES OPERATING LLC
BLUE 3-65 33-32-31 1BH, 2AH, 2BH, 3AH, 3BH, 4AH, & 4BH
NW 1/4 SW 1/4, SECTION 34, T38S, R65W, 6th P.M.
ADAMS COUNTY, COLORADO

SURVEYED BY	MATT MILLER, O.R.	10-27-20	SCALE
DRAWN BY	C.J.VIE	11-24-20	1" = 60'

PRELIMINARY DRILL RIG LAYOUT



LEGEND:
● = SURFACE LOCATION.
◇ = TOP PRODUCTION ZONE.
○ = TARGET BOTTOM HOLE.



LINE TABLE		
LINE	DIRECTION	LENGTH
L1	N24°37'39"W	1981.60'
L2	N35°20'53"W	1460.48'
L3	N56°04'43"W	1041.37'
L4	S87°15'01"W	884.24'
L5	S54°07'35"W	1113.52'
L6	S36°07'09"W	1563.05'
L7	S26°32'32"W	2104.53'

WELL	SURFACE LOCATION	TOP PRODUCTION ZONE	TARGET BOTTOM HOLE
BLUE #3-65 33-32-31 1BH	*1 2283' FSL 493' FWL	*2 1210' FNL 330' FEL	*3 400' FNL 330' FWL
BLUE #3-65 33-32-31 2AH	*4 2283' FSL 513' FWL	*5 1820' FNL 330' FEL	*6 1280' FNL 330' FWL
BLUE #3-65 33-32-31 2BH	*7 2283' FSL 533' FWL	*8 2430' FNL 330' FEL	*9 2160' FNL 330' FWL
BLUE #3-65 33-32-31 3AH	*10 2283' FSL 553' FWL	*11 2240' FSL 330' FEL	*12 2240' FSL 330' FWL
BLUE #3-65 33-32-31 3BH	*13 2283' FSL 573' FWL	*14 1630' FSL 330' FEL	*15 1630' FSL 330' FWL
BLUE #3-65 33-32-31 4AH	*16 2284' FSL 593' FWL	*17 1020' FSL 330' FEL	*18 1020' FSL 330' FWL
BLUE #3-65 33-32-31 4BH	*19 2284' FSL 613' FWL	*20 400' FSL 330' FEL	*21 400' FSL 330' FWL

REV: 1 08-03-21 C.C. (COGCC UPDATES)

CRESTONE PEAK RESOURCES
OPERATING LLC

BLUE #3-65 33-32-31 1BH, 2AH, 2BH,
3AH, 3BH, 4AH & 4BH
NW 1/4 SW 1/4, SECTION 34, T3S, R65W, 6th P.M.
ADAMS COUNTY, COLORADO

UELS, LLC
Corporate Office * 85 South 200 East
Vernal, UT 84078 * (435) 789-1017

SURVEYED BY	MATT MILLER, O.R.	10-27-20	SCALE
DRAWN BY	J.J.	11-11-20	1" = 1000'

DIRECTIONAL WELL PLAT



PHOTO: VIEW OF PROPOSED LOCATION

CAMERA ANGLE: NORTHERLY

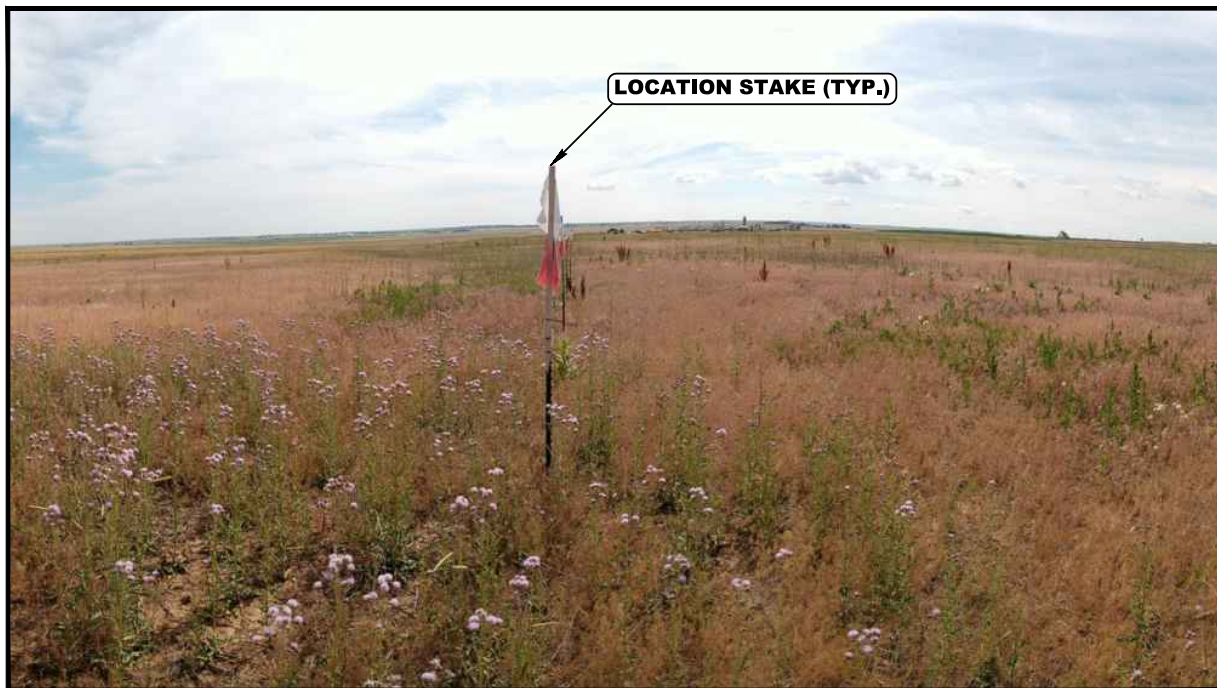


PHOTO: VIEW OF PROPOSED LOCATION

CAMERA ANGLE: EASTERLY

REV: 1 08-03-21 C.C. (UPDATE PHOTOS)

**CRESTONE PEAK
RESOURCES OPERATING LLC**

**BLUE 3-65 33-32-31 1BH, 2AH, 2BH, 3AH, 3BH, 4AH, & 4BH
NW 1/4 SW 1/4, SECTION 34, T3S, R65W, 6th P.M.
ADAMS COUNTY, COLORADO**

TAKEN BY	G.W.	11-23-20	
DRAWN BY	C.IVIE	11-24-20	
LOCATION PHOTOS		PHOTO 1	



UELS, LLC
Corporate Office * 85 South 200 East
Vernal, UT 84078 * (435) 789-1017



PHOTO: VIEW OF PROPOSED LOCATION

CAMERA ANGLE: SOUTHERLY



PHOTO: VIEW OF PROPOSED LOCATION

CAMERA ANGLE: WESTERLY

REV: 1 08-03-21 C.C. (UPDATE PHOTOS)

**CRESTONE PEAK
RESOURCES OPERATING LLC**

**BLUE 3-65 33-32-31 1BH, 2AH, 2BH, 3AH, 3BH, 4AH, & 4BH
NW 1/4 SW 1/4, SECTION 34, T3S, R65W, 6th P.M.
ADAMS COUNTY, COLORADO**

TAKEN BY	G.W.	11-23-20	
DRAWN BY	C.IVIE	11-24-20	
LOCATION PHOTOS		PHOTO 2	



UELS, LLC
Corporate Office * 85 South 200 East
Vernal, UT 84078 * (435) 789-1017