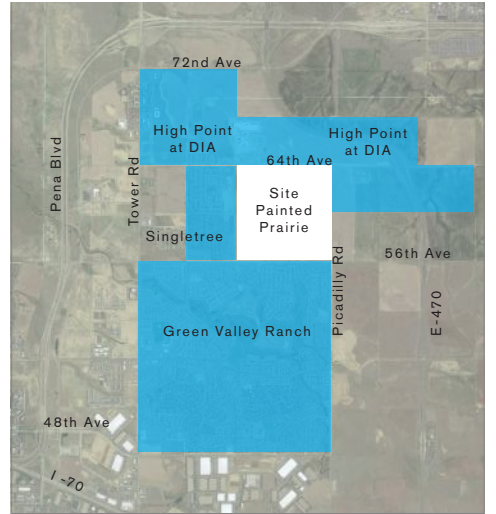


## LEGEND

- PD
- Open Space
- Retail and Office
- Civic
- Mixed Use Commercial
- CMU-10 (City & County of Denver)
- CMU-20 (City & County of Denver)
- Detention Area/Water Quality
- Flood Plain
- Painted Prairie Town Center
- Painted Prairie Civic
- Painted Prairie School
- Painted Prairie Community Park
- Painted Prairie Neighborhood Park
- Painted Prairie Mixed-Use Corridor
- Community Park
- Commercial Retail
- High Density Residential
- Hotel/Mix Use
- Multi-Family
- Oil and Gas
- Open Space w/ Preserved ROW
- Park
- SFA Small
- SFD Standard/Small
- SFA/SFD Small
- SFD Standard



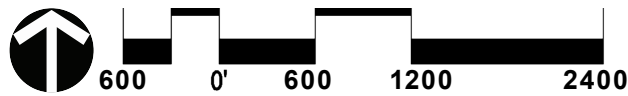
**Site Vicinity Map** 1" = 2 Miles

- Highline Regional Trail
- Community Connection
- High Point Community Connection
- Site Boundary
- Municipality
- Half Mile Boundary

## NOTES

Painted Prairie Development falls within the jurisdiction of the following district boundaries:

- City of Aurora Fire Department
- City of Aurora Police Department
- Aurora Public School District



**TAB 3**

# PAINTED PRAIRIE ▪ FRAMEWORK DEVELOPMENT PLAN ▪ CONTEXT MAP

CITY OF AURORA, COLORADO | SEPTEMBER 13, 2019

PREPARED FOR:  
**Painted Prairie Owner LLC**  
5750 DTC Parkway, Suite 210  
Greenwood Village, CO 80111

PREPARED BY:  
**LandDesign**  
1360 Walnut Street, Suite 102  
Boulder, CO 80302