

STAFFORD LOGISTICS CENTER SUBDIVISION FILING NO. 1

LOCATED IN THE NORTHWEST QUARTER OF SECTION 2, TOWNSHIP 4 SOUTH, RANGE 66 WEST OF THE 6TH PRINCIPAL MERIDIAN, CITY OF AURORA, COUNTY OF ARAPAHOE, STATE OF COLORADO

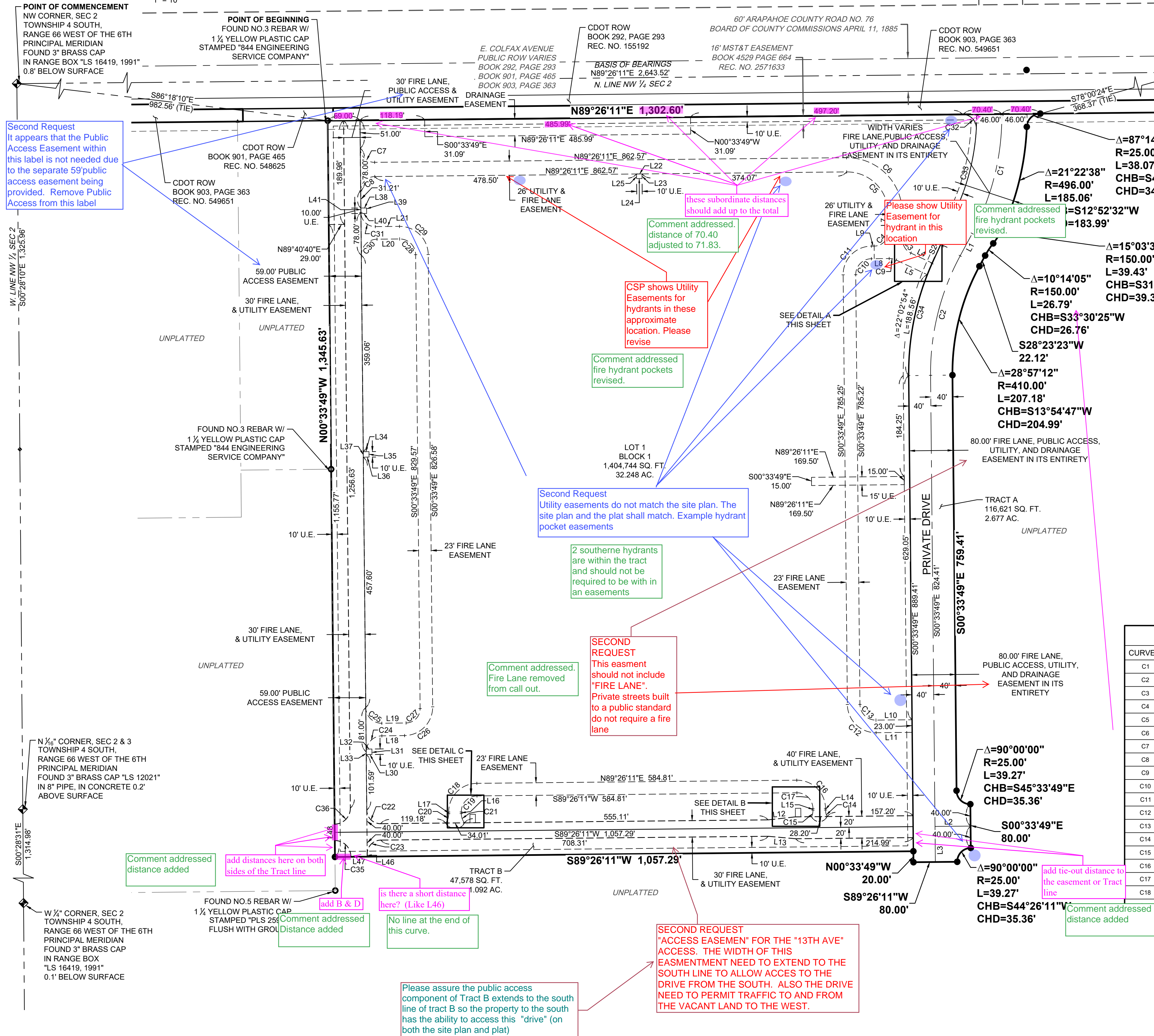
LEGEND

- SITE BOUNDARY
- - - SECTION LINE
- - - TRACT/LOT LINE
- - - EXISTING EASEMENT LINE
- - - EXISTING RIGHT-OF-WAY LINE
- - - EASEMENT LINE
- SET 18" NO. 5 REBAR W/ 1 1/2" YELLOW PLASTIC CAP STAMPED "PLS 25965" FLUSH WITH GROUND UNLESS OTHERWISE NOTED
- FOUND MONUMENT AS NOTED
- ◊ SECTION CORNER AS NOTED
- U.E. UTILITY EASEMENT

SCALE: 1" = 100'
ORIGINAL GRAPHIC SCALE

DETAIL A

1" = 10'



DETAIL B

1" = 10'

LINE #	BEARING	DISTANCE
L1	S28°23'23\"W	46.32'
L2	N89°26'11\"E	65.00'
L3	S00°33'49\"E	65.00'
L4	S64°49'46\"W	43.08'
L5	N64°49'46\"W	63.01'
L6	S00°45'55\"E	51.47'
L7	S00°45'55\"E	35.21'
L8	S89°26'11\"W	32.49'
L9	S89°40'10\"W	5.08'
L10	N89°26'11\"E	66.00'
L11	N89°26'11\"E	66.00'
L12	N83°43'33\"E	50.25'
L13	S64°51'11\"E	50.25'
L14	N00°33'49\"W	3.00'
L15	N00°33'49\"W	3.00'
L16	S00°33'49\"E	3.00'
L17	N00°33'49\"W	3.00'
L18	S89°18'55\"W	41.47'
L19	S89°18'55\"W	44.29'
L20	N89°26'11\"E	41.29'

LINE #	BEARING	DISTANCE
L21	N89°26'11\"E	44.29'
L22	N89°26'11\"E	10.00'
L23	S00°33'49\"E	8.50'
L24	S89°26'11\"W	10.00'
L25	N00°33'49\"W	8.50'
L26	S00°33'49\"E	15.65'
L27	S89°26'11\"W	10.00'
L28	N00°24'51\"W	15.65'
L29	N89°26'11\"E	9.96'
L30	S89°26'11\"W	10.50'
L31	S00°33'49\"E	10.00'
L32	N89°26'11\"E	10.50'
L33	N00°33'49\"W	10.00'
L34	N89°26'11\"E	10.50'
L35	S00°33'49\"E	10.00'
L36	S89°26'11\"W	10.50'
L37	N00°33'49\"W	10.00'
L38	S89°26'11\"W	10.50'
L39	N00°33'49\"W	10.00'
L40	N89°26'11\"E	10.50'

LINE #	BEARING	DISTANCE
L41	S00°33'49\"E	10.00'
L42	S89°26'11\"W	10.00'
L43	N00°33'49\"W	15.58'
L44	N89°26'11\"E	10.00'
L45	S00°33'49\"E	15.58'
L46	N00°33'49\"W	5.00'
L47	N89°26'11\"E	30.00'
L48	S00°33'49\"E	30.00'

this bearing should match the bearing for the boundary line
Comment addressed. Bearing updated

CURVE #	DELTA	RADIUS	ARC LENGTH	CHORD DIRECTION	CHORD LENGTH
C1	28°57'05\"	450.00'	227.38'	S13°54'50\"W	224.97'
C2	28°57'12\"	450.00'	227.40'	S13°54'47\"W	224.99'
C3	64°03'50\"	26.00'	29.07'	S32°47'51\"E	27.58'
C4	90°26'06\"	26.00'	41.04'	S44°27'07\"W	36.91'
C5	89°47'53\"	75.00'	117.55'	S45°39'52\"E	105.88'
C6	89°47'53\"	101.00'	158.29'	S45°39'52\"E	142.58'
C7	90°00'00\"	26.00'	40.84'	S45°33'49\"E	36.77'
C8	90°00'00\"	26.00'	40.84'	S44°26'11\"W	36.77'
C9	25°44'03\"	29.00'	13.03'	N77°41'47\"W	12.92'
C10	90°00'00\"	29.00'	45.55'	S44°26'11\"W	41.01'
C11	90°13'59\"	52.00'	81.89'	S44°33'11\"W	73.69'
C12	90°00'00\"	52.00'	81.68'	S45°33'49\"E	73.54'
C13	90°00'00\"	29.00'	45.55'	S45°33'49\"E	41.01'
C14	24°26'36\"	29.00'	12.37'	S12°47'07\"E	12.28'
C15	24°26'36\"	29.00'	12.37'	N11°39'29\"E	12.28'
C16	90°00'00\"	52.00'	81.68'	N45°33'49\"W	73.54'
C17	90°00'00\"	29.00'	45.55'	N45°33'49\"W	41.01'
C18	90°00'00\"	52.00'	81.68'	S44°26'11\"W	73.54'
C19	90°00'00\"	29.00'	45.55'	S44°26'11\"W	41.01'
C20	35°53'18\"	29.00'	18.16'	N17°22'50\"E	17.87'

CURVE #	DELTA	RADIUS	ARC LENGTH	CHORD DIRECTION	CHORD LENGTH
C21	35°53'18\"	29.00'	18.16'	S18°30'28\"E	17.87'
C22	90°00'00\"	25.00'	39.27'	S45°33'49\"E	35.36'
C23	90°00'00\"	25.00'	39.27'	S44°26'11\"W	35.36'
C24	89°52'44\"	29.00'	45.49'	S44°22'33\"W	40.97'
C25	90°07'16\"	29.00'	45.61'	N45°37'27\"W	41.06'
C26	89°52'44\"	52.00'	81.57'	S44°22'33\"W	73.46'
C27	89°52'44\"	26.00'	40.79'	S44°22'33\"W	36.73'
C28	90°00'00\"	29.00'	45.55'	S45°33'49\"E	41.01'
C29	90°00'00\"	52.00'	81.68'	S45°33'49\"E	73.54'
C30	90°00'00\"	29.00'	45.55'	N44°26'11\"E	41.01'
C31	90°00'00\"	26.00'	40.84'	S45°33'49\"E	36.77'
C32	93°46'55\"	25.00'	40.92'	S43°40'21\"E	36.50'
C33	20°52'28\"	404.00'	147.19'	S13°39'21\"W	146.37'
C34	24°39'23\"	490.00'	210.86'	S11°45'52\"W	209.24'
C35	91°50'56\"	29.04'	46.55'	N44°35'33\"W	41.73'
C36	90°00'00\"	29.00'	45.55'	N44°26'11\"E	41.01'

JOB NO. DCS18-4121-01
DATE: 07/17/2019
SCALE: 1" = 100'
Sheet 2 of 2

990 south broadway
suite 230
denver, co 80209
p 303.561.3333
waremalcomb.com

WARE MALCOMB
CIVIL ENGINEERING & SURVEYING

NO. DATE REMARKS
DRAWN BY: AJ PA/PM: TS