



# **Facility Specific Emergency Response Plan**

## **MCC 3-66 25-27**

23051 East 26th Ave.  
Aurora CO 80011

NESE, Section 25, Township 3 South, Range 66 West, 6<sup>th</sup> P.M.  
Lat/Long: 39.798242 / -104.776111

Document Date: 2/17/2020  
Last Review Date: 2/17/2020

## Table of Contents

1.0	Plan overview	3
1.1	Emergency Preparedness plan	4
1.2	General information	5
2.0	Maps	1
2.1	Spill or Release Response map	1
2.2	Risk Receptors map	1
3.0	Recognition, Reporting, and Notification	2
3.1	Emergency Response Agencies (First Responders)	2
3.1.1	Driving directions	3
3.2	GMT Exploration Emergency Contacts	4
3.3	Government Agencies	5
4.0	Response Actions	6
4.1	Evacuation	6
4.2	Shutdown protocols	6
4.3	Response	6
4.4	Secure location	6
4.5	Establish Incident Command System (ICS)	6
4.5	Available Resources	7
5.0	Incident tactics (details for specific Emergencies)	8
5.1	Medical Emergency (Injury or Illness)	8
5.1.1	Hospitals	9
5.2	Fire	10
5.3	Spills or Release	11
5.4	Natural Disasters and inclement weather	12
5.5	Responding to Media, Unauthorized Visitors, and Protesters	13

# 1.0 Plan overview

Emergency responses are the actions taken by company employees, contractors, or designated responders (fire department, paramedics, police etc.) in an emergency incident. An emergency incident is the unexpected event that has the potential to cause large-scale injury or death to humans, damage the environment, or damage property.

An emergency incident may include but is not limited to uncontrolled fire, extreme weather conditions (flooding, blizzards, hurricanes, tornadoes), explosions, pipeline or equipment ruptures, serious leaks, or release of hazardous chemicals.

The nature of an emergency incident will dictate the level of response and emergency actions needed. The Incident Levels are detailed in the field wide GMT Exploration's Emergency Response Plan (the "ERP").

Emergency Response prioritize the protection of human life and well-being. The initial response strategy will adhere to the following priorities:

1. People (human safety)
2. Environmental Protection
3. Assets/Property
4. Reputation

Not all incidents are considered an emergency. For example:

- The release of a hazardous substance where no potential safety or health hazards exist.
- Where the released substance can be absorbed, neutralized, or controlled in the immediate release area.
- Fires in their inception stage (small and quickly contained).

Post-emergency response includes activities performed after the immediate threat of the emergency is stabilized or eliminated. Such activities as repairs, decontamination, and clean up at the site are considered post emergency response. These are not considered part of the emergency response.

## 1.1 Emergency Preparedness plan

### Purpose:

The purpose of this plan is to provide a tool for employees and contractors to respond to emergencies at the MCC 3-66 25-27 pad location (the “Pad”). This plan, with the resources and equipment listed herein, is a planning document to demonstrate the potential response capability available to respond to an incident. It is not a guarantee of what will occur or the equipment/deployment sequencing that will be used in an actual event. Nothing in this plan is intended to limit the discretion of GMT company employees and/or contractors to select any sequence of actions or to take whatever time deemed necessary to maximize the effectiveness of their response consistent with safe practices.

GMT Exploration creates and maintains site-specific emergency response plans for each operated location. This plan was prepared in conjunction with the **City of Aurora Building Division Fire Life Safety**. It will be updated and reviewed at a minimum annually and whenever significant events occur that may impact this plan. The most current version of this plan can be found on file at GMT’s corporate headquarters.

Table of distribution for this document – *Contact details to be added after upon distribution*

Contact Name	Organization	Contact Phone #	Date Plan Was Received

### Training:

All field personnel and supervisors working on the Pad must receive training on this plan from their supervisor when:

- The plan is developed, or the employee is assigned initially to a job
- The employee’s responsibilities under the plan change
- The plan is changed

The purpose of this training is to review identified risks specific to one’s operating area and the corresponding initial response procedures. Individuals will understand the required notifications, specific to the Pad, in response to an emergency and review the expectation to support site control and site safety.

All emergency response training including walk throughs or table-top exercises will be coordinated with the **City of Aurora Building Fire Life Safety**.

This document focuses solely on the highlights and specific details for an emergency at the MCC 3-66 25-27 Pad. GMT Exploration has supporting documents that may be referenced in the response effort. These documents are GMT's EH&S policy, the ERP, the field wide SPCC, the MCC 3-66 25-27 Site-Specific Spill Response Plan and the Standard Operating Procedures (SOP) for the MCC pad.

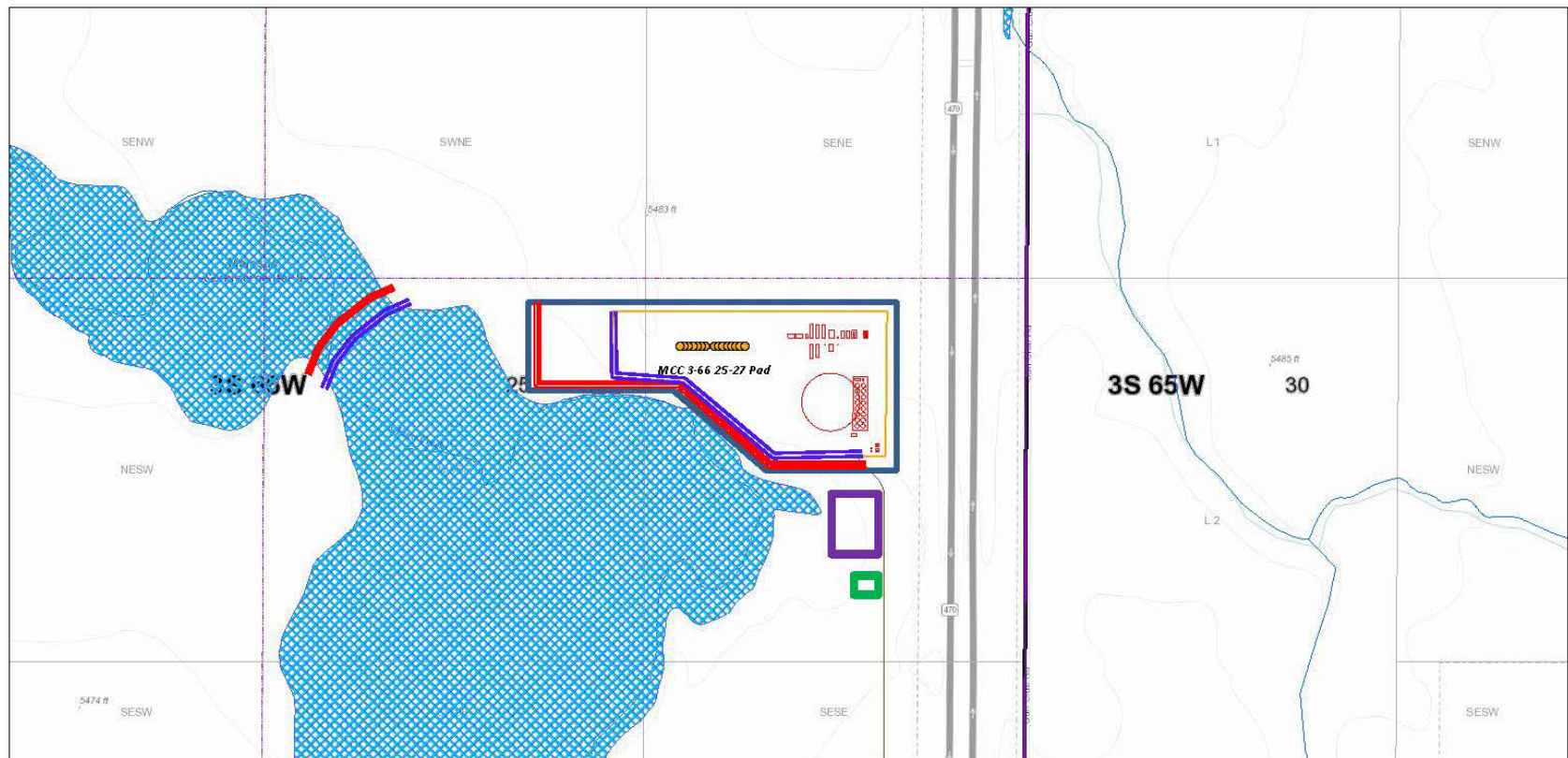
## 1.2 General information

The MCC pad is a planned oil and gas wellsite and production facility pad that is planned to contain 16 oil and gas wells and associated production facilities. The asset is ~15 miles from downtown Denver.

Changing conditions such as wind direction road closures and flooding may require deviation from this plan. It is the responsibility of the emergency response personnel to be trained in tactical and emergency response procedures and be able to adjust the plan as needed.

## 2.0 Maps

### 2.1 Spill or Release Response map



October 29, 2019

#### Wells (P)(S)

- Existing Well
- Proposed Well
- ▲ Abandoned Location
- Access Road (1:100K)

#### Facilities (1:10K)(P)(S)

- Proposed Facility Equipment

- Proposed Limits of Disturbance
- Proposed Well Pad

#### Ascent Section Line

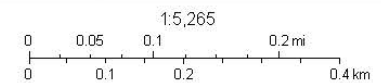
- Lot
- Qtr
- Qtr-Qtr
- Section

#### Building Poly

- Building
- Building Unit

#### Spill or Release Elements

- Muster Point
- Staging Area
- Sorbent Boom
- Boom



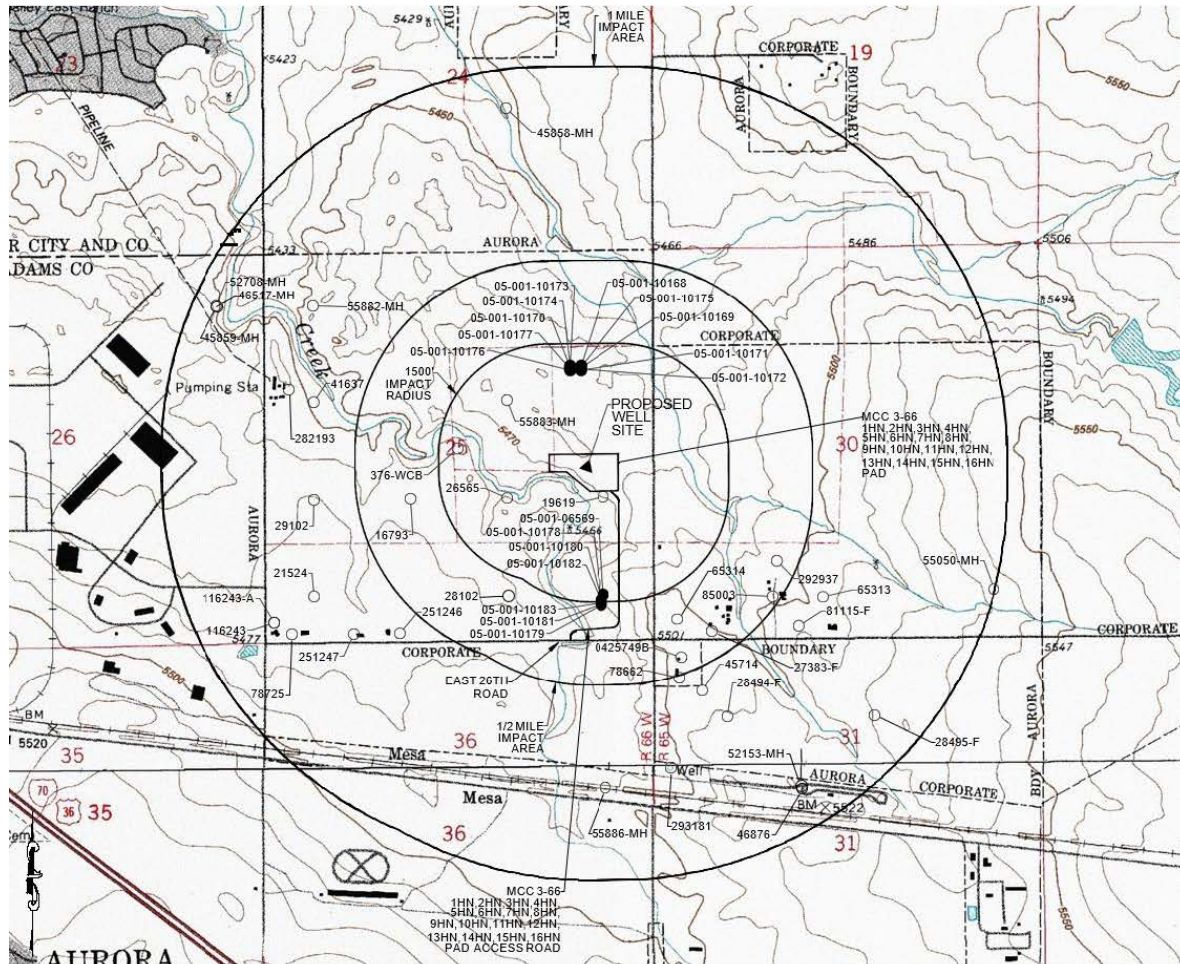
Sources: Esri, HERE, Garmin, Intermap, increment P Corp., GEBCO, USGS, FAO, NPS, NRCAN, GeoBase, IGN, Kadaster NL, Ordnance Survey, Esri Japan, METI, Esri China (Hong Kong), (c) OpenStreetMap contributors, and the GIS UserCommunity  
Ascent

DISCLAIMER: This figure is intended for reference use only and should not be used to establish, transfer, or dispute boundaries.

## 2.2 Risk Receptors Map

### IMPACT AREA – RISK RECEPTORS MAP

SITE ADDRESS: 23051 E. 26TH AVE AURORA, CO 80011



LEGEND		CULTURAL FEATURE DISTANCES	
FROM WELL (FT)		FROM PRODUCTION FACILITY (FT)	
► PROPOSED OIL AND GAS WELL SITE	BUILDING:	2440	2546
● PERMITTED OIL AND GAS WELL SITE PER COGCC GIS ONLINE AUGUST 2018	BUILDING UNIT:	2479	2638
○ PERMITTED WATER WELL PER COLORADO DIVISION OF WATER RESOURCES AUGUST 2018	HIGH OCCUPANCY BUILDING UNIT:	> 5280	> 5280
■ OCCUPIED STRUCTURE/RESIDENCE	DESIGNATED OUTSIDE ACTIVITY AREA:	> 5280	> 5280
	PUBLIC ROAD:	332	252
	ABOVE GROUND UTILITY:	3383	3162
	RAILROAD:	4131	4367
	PROPERTY LINE:	251	277

#### DISCLAIMER:

THIS PLOT DOES NOT REPRESENT A MONUMENTED LAND SURVEY AND SHOULD NOT BE RELIED UPON TO DETERMINE BOUNDARY LINES, PROPERTY OWNERSHIP OR OTHER PROPERTY INTERESTS. PARCEL LINES, IF DEPICTED HAVE NOT BEEN FIELD VERIFIED AND MAY BE BASED UPON PUBLICLY AVAILABLE DATA THAT ALSO HAS NOT BEEN INDEPENDENTLY VERIFIED.

#### DATA SOURCE:

USGS TOPOGRAPHIC DIGITAL RASTER GRAPHIC 1:24,000 SCALE PUBLICLY AVAILABLE DATA SOURCES HAVE NOT BEEN INDEPENDENTLY VERIFIED BY ASCENT.

## 3.0 Recognition, Reporting, and Notification

Upon recognition of an Emergency event.

1. Activate local alarm.
2. Shut down all work activities.
3. Assess the situation and severity. If safe to do so, remove or mitigate any immediate hazards that could cause further injuries.

### 3.1 Emergency Response Agencies (First Responders)

The MCC location has the following First Responders and Emergency Management Offices that will be contacted in the case of an emergency:

Emergency Response Agencies	
Agency	Telephone Number
National	
Police/Fire/EMS	911
National Response Center	(800) 424-8802
Adams County, Colorado	
Adams County Fire Department	(303) 539-6800
Adams County Sheriff (Rick Reigenborn)	(303) 654-1850
Adams County Office of Emergency Management (Richard Atkins)	(720) 523-6600
City of Aurora	
Aurora Fire Rescue	(303) 326-8999

### 3.1.1 Driving directions

Driving Direction to MCC 3-66 25-27	
East	FROM THE INTERSECTION OF Hudson Rd and E 26 <sup>th</sup> Ave head West on E 26 <sup>th</sup> Ave approximately 5.3 miles to the lease access road. Turn Right (North) onto the lease access road and proceed north to the MCC 3-66 Pad, wells and Production facility.
West	FROM THE INTERSECTION OF Tower Rd and E 32 <sup>nd</sup> Pkwy head East on E 32 <sup>nd</sup> Pkwy approximately 2.1 miles to the intersection of Piccadilly Rd and E 32 <sup>nd</sup> Pkwy. Turn Right (South) onto Piccadilly Rd and head South approximately .14 miles to the intersection of Piccadilly Rd and E 26 <sup>th</sup> Ave. Turn Left (East) onto 26 <sup>th</sup> and head East approximately .75 miles to the lease access road. Turn Right (North) onto the lease access road and proceed north to the MCC 3-66 Pad, wells and Production facility.
North	FROM THE INTERSECTION OF Piccadilly Rd and E 56 <sup>th</sup> Ave head South on Piccadilly Rd approximately 3.0 miles to the intersection of Piccadilly Rd and E 26 <sup>th</sup> Ave. Turn Left (East) onto 26 <sup>th</sup> and head East approximately .75 miles to the lease access road. Turn Right (North) onto the lease access road and proceed north to the MCC 3-66 Pad, wells and Production facility.
South	FROM THE INTERSECTION OF N Gun Club Rd and E 6 <sup>th</sup> Pkwy head North approximately 1.3 miles to the intersection of N Gun Club Rd and E Colfax Ave/I-70 Frontage Rd. Turn left (West) onto E Colfax Ave/I-70 Frontage Rd and head West approximately 0.1 mile. Use right 2 lanes to turn right (North). Head North 0.3 miles to E 19 <sup>th</sup> . Turn right (East) onto E 19 <sup>th</sup> Ave. Head East 0.1 miles to Smith Way. Turn left (North) onto Smith Way and head North approximately 1.0 mile to E Smith Rd. Turn left (West) onto E Smith Rd and head West to the intersection of Piccadilly Rd and E Smith Rd. Turn right (North) onto Piccadilly Rd and head North approximately 0.3 miles to the intersection of Piccadilly Rd and E 26 <sup>th</sup> Ave. Turn Right (East) onto 26 <sup>th</sup> and head East approximately .75 miles to the lease access road. Turn Right (North) onto the lease access road and proceed north to the MCC 3-66 Pad, wells and Production facility.

## 3.2 GMT Exploration Emergency Contacts

GMT Exploration Required Emergency Contacts			
Name	Position	Office	Cell
Pam Logan	VP Engineering <b>HSE Manager</b>	303-586-9290	303-653-3639
BJ Cox	Production Superintendent <b>Safety Supervisor</b>	303-586-9274	307-354-8895

Here is a list of the key information needs for notifications.

- a) Location or facility and call back phone number.
- b) Type of emergency.
- c) Time of discovery.
- d) Magnitude of emergency (size of fire or spill, number of people involved, injuries, other properties or companies are involved).
- e) What you have done prior to making notification.
- f) What external outside notifications have been made.
- g) Recommended next steps for the response.
- h) Weather conditions.
- i) What assistance you need.
- j) When you will call back with a subsequent report.

### 3.3 Government Agencies

The MCC location has the following government agencies and local contacts that will be contacted in the event of an emergency:

Emergency Response Agencies	
Agency	Telephone Number
National	
OSHA	(800) 321-6742
National Weather Service	(303) 494-4221
Poison Control Hotline	(800) 222-1222
Call Before You Dig	811
NRC (Nuclear Regulatory Commission)	(800) 424-8802
Colorado	
Colorado Oil and Gas Conservation Commission (COGCC)	(303) 894-2100
Colorado Department of Public Health and Environment (CDPHE)	(887) 518-5608
Bureau of Land Management Colorado State Office	(303) 239-3600
Occupational Safety and Health Administrations- Colorado Office (Denver Area)	(303) 844-5282
Colorado Emergency Management Agency	(720) 852-6600
Call Before You Dig (Colorado)	(800) 922-1987
Adams County	
Adams County Regional Communication Center	(303) 288-1535
Adams County Local Government Designee (Christine Dougherty)	(720)-523-6891
City of Aurora	
City of Aurora Non-Emergency Dispatch	(303) 627-3100
City of Aurora Health Department	(877) 518-5608
City of Aurora Local Government Designee (Stephen Rodriquez)	(303) 739-7186
City of Aurora LEPC – Office of Emergency Management	(303) 326-8995

## 4.0 Response Actions

### 4.1 Evacuation

1. Personnel onsite when an Emergency Event occurs, will evacuate to a predetermined point upwind and uphill muster point.
2. When the evacuation is complete, account for the personnel before proceeding.
3. If the muster point becomes unsafe, evacuated to one of the following sites.

### 4.2 Shutdown protocols

Perform emergency shutdown, remove ignition sources, or pressure reduction necessary to minimize hazards to life or property.

### 4.3 Response

1. First Responders (Company personnel or public First Responders who arrive at the Emergency Incident site first) need to observe and evaluate the general conditions before taking further action.
2. Offensive mitigation actions may not be attempted until Incident Command System (ICS) is established.

### 4.4 Secure location

1. Isolate and deny access to site. Only allow approved personnel and emergency services to enter site.
2. In conjunction with Emergency Response Agencies, isolate the scene of the Emergency Site. The following actions may be taken:
  - a. Establish perimeter controls to keep persons out of any potentially hazardous areas
  - b. Reroute traffic around the area
  - c. Identify and remove ignition sources
  - d. Identify roadways or interstates which may need to be closed due to the event.

### 4.5 Establish Incident Command System (ICS)

1. Establish the Incident Command (ICS) and identify the Incident Commander and the On-Site Group Supervisor.
2. ICS position beyond these two required positions should match the complexity of the situation.
3. The entire Incident Command structure is in the GMT Exploration US ERP.
4. Establish the Hot, Warm and Cold Zones. See Map 2.2 Risk Receptors to establish zones.

5. Establish reliable communication methods between individuals who will play an active role in the response.

## 4.5 Available Resources

Emergency Services Contact		
Service	Third Party Resource	Telephone Number
National (US)		
Safety Data Sheets (SDS) (chemicals on location)	Chem Tel	800- 255-3924
Spill Response (HAZWOPER/HAZMAT)	ECOS	888- 506-3165
Well Control Blowout	Well Control (Halliburton)	281-931-8884 800-BLOWOUT
Colorado		
Air & Groundwater Monitoring	LT Environmental (LTE) Chris Shepard	303-962-5503
Facility Repair Reclamation	Advanced Oilfield Justin Rapp	970- 379-0756

## 5.0 Incident tactics (details for specific Emergencies)

### 5.1 Medical Emergency (Injury or Illness)

1. Shut down all work activities.
2. Assess the situation and severity. If safe to do so, remove or mitigate any immediate hazards that could cause further injuries.
3. Call 911 for emergency services.
  - a) Follow the instructions of the operator at all times.
  - b) Provide as much information as possible to the operator.
4. Send a designated person to the nearest main road to guide emergency services to the location. If a helicopter is necessary for evacuation, direct an individual to establish a landing zone.
5. Make notification to GMT (see section 3.2 for instructions).
6. All unneeded field personnel, contractors, and visitors who are not assisting the victim should be evacuated to the Muster Point.
7. Continued instructions will come from the Incident Commander and will be relayed by the On-Site Group Supervisor.

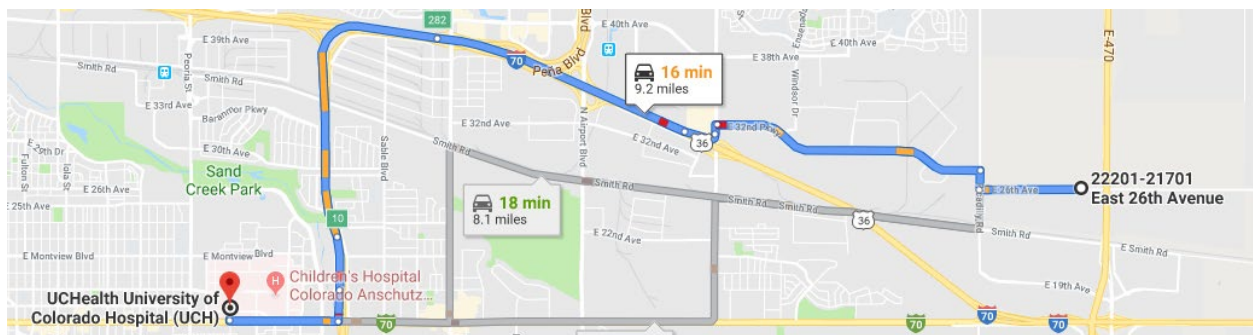
## 5.1.1 Hospitals

### UCHealth University of Colorado Hospital (UCH)

12605 E 16th Ave

Aurora, Colorado 80045

- Distance from location: 7.7 miles
- Ground travel time: ~17 minutes
- Level 1 Trauma Center
- Burn Unit



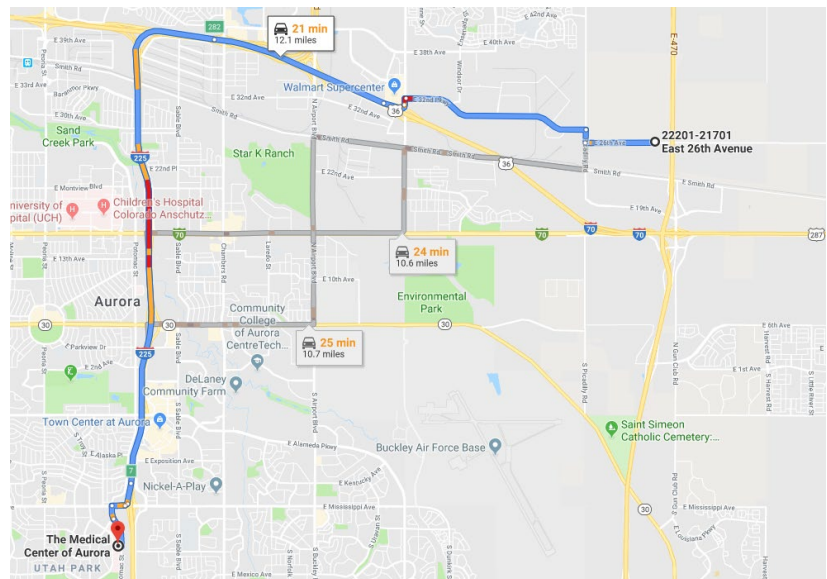
### Medical Center of Aurora

1501 S Potomac Street

Aurora, Colorado 80012

(303) 695-2600

- Distance from location: 10.6 miles
- Ground travel time: ~21 minutes
- Level 2 Trauma Center



## 5.2 Fire

These are general reminders of what to do in the event of a fire. Although fires in their inception stage are not normally considered an Emergency, please remember that conditions can change quickly. The MCC 3-66 25-27 has (will have) flammable material on location and is close to the public (E-470). Error on the side of caution when deciding to call 911.

1. Raise the alarm
2. Notify local fire department and emergency services
3. Evacuate to designated muster point.
4. Perform head count of personnel determine need for rescue of missing personnel
5. If safe to do so, activate emergency shut down systems
6. If safe to do so, isolate all potential ignition sources
7. If it can be done safely, the source has been shut off, and fire is small, then attempt to extinguish the fire.
  - a. Only personnel with current fire extinguisher training may attempt to extinguish fire
  - b. Fight the fire with wind at your back
  - c. Use appropriate fire extinguisher
  - d. Don't use water on petroleum or electrical fires
  - e. Do not endanger yourself and make sure you have a clear escape route
8. Do not return to site until cleared by fire department
9. Contain any potential runoff resulting from firefighting efforts
10. If needed, implement initial air monitoring program and establish site control
11. Do not return equipment to service until inspections are complete and all repairs are done
12. File post incident reports

## 5.3 Spills or Release

These are provisions for any spill outside of the containment area that has the potential to leave the Well Site or threatens water of the states. Hazardous substances are chemicals, and produced fluids included produced water, oil, and natural gas.

*Detailed Spill Response will be complete prior to construction but following this basic outline:*

1. Evacuate personnel from the immediate area of the spill
2. Identify the spilled material(s)
3. Set the Incident Command
4. Notify the spill response team (phone number of HAZWOPER trained responders)
5. Table of possible Agency that will need to notify depending on the Hazard and size of spill/release (emergency services, City Stormwater Engineer, Public Health Department, Environmental agency CDPHE, COGCC, City of Aurora, highway patrol).
6. Barricade the spill area and notify others in surrounding areas (updated map of location for booms and sorbents pads). Identify the location of containment supplies and list of needed tools. See map 2.2 Spill or Release Response.
7. Extinguish or disconnect all sources of ignition and contact the fire department if the chemical is flammable
8. Don the appropriate personal protective equipment
9. Contain the spill
10. Clean up the spill
11. Dispose of the spill in accordance with local, state and federal regulations
12. Reports

## 5.4 Natural Disasters and inclement weather

If the weather becomes severe to the point it threatens the safety of workers, it is a best practice to evacuate or take shelter.

1. Notify supervisor of the severe weather.
  2. Shut down all work activities.
  3. If possible, shut-in wells and production equipment.
  4. Evacuate location or take shelter.
- 
- a) **TORNADO** - It may not be best to evacuate. Use best judgment if a tornado is in sight. Go to the lowest point possible (i.e., ditches, culverts, creek bottoms). Do not stay in a vehicle! Lay face down and cover your head with your hands. Keep all PPE on; this can help protect you from flying debris. Wait for the storm to pass.
  - b) **THUNDER/LIGHTNING** – When you see lightning or hear thunder, “cab up” in a vehicle for 30 minutes from the last sighting.
  - c) **HIGH WINDS** – Do not work at heights. If a crane is being utilized, shut it down when winds become higher than 25 miles per hour (mph). “Cab up” and wait for the wind to die down. Keep all PPE on while in high winds. PPE can help protect from flying debris.
  - d) **SEVERE RAIN** – If driving and severe rain occurs, pull to the side of the road and wait for the rain to pass. Pull as far to the right as possible. Turn on hazard lights. If on a work sight, “cab up” until the rain passes.
  - e) **FLOODING** – If you are in an area that is prone to flooding, never attempt to stay on location when flooding occurs. Find the best route to high ground and remain until safe. Never drive through standing water.
  - f) **HAIL** – If hail occurs while on site, keep PPE on at all times. PPE can help protect you from falling ice. Seek shelter in a building or vehicle until the storm passes.
  - g) **WINTER WEATHER** (Blizzards and severe snow storms) – Avoid unnecessary driving and seek shelter immediately.

## 5.5 Responding to Media, Unauthorized Visitors, and Protesters

You may be confronted with media, unauthorized visitors and/or protesters on site at any time. Approach each of these situations calmly, cautiously and deliberately. Be alert; it could develop into a highly dangerous situation; therefore, avoid the hysterical or excited approach.

### Media near GMT wellsite

1. If you notice media near but not on a location, immediately notify your supervisor of the situation.
2. If you must engage the member of the media, remain polite, and professional. Tell them, **“The best way I can help you is to put you in touch with our communications team.”**

All Media Requests			
Phil Wood	VP Land Information Officer	Office phone 303-586-9284	<a href="mailto:pwood@gmtexploration.com">pwood@gmtexploration.com</a>

### Unauthorized visitors or protests near GMT wellsite

1. Peaceful, Non-Obstructive Protest
  - a. Notify your supervisor of the situation.
  - b. Peaceful protests should not be interrupted.
  - c. Do not engage with peaceful protesters.
  - d. Efforts should be made to conduct GMT business as normal.
2. Disruptive Protests

If any of these conditions exist, the protest is disruptive:

  - a. Disruption of the normal operations of the GMT facility.
  - b. Obstructing access to GMT wellsite.
  - c. Threat of physical harm to persons or damage to GMT facility.

If protest is disruptive, then take these actions:

  - a. Notify the sheriff's department (911).
  - b. Limit your engagement. Do not play the role of law enforcement.
  - c. Make notification to GMT (see section 3.2 for instructions).
  - d. Immediately safeguard personnel – including any other affected parties (other offices, or residents)
  - e. Assemble all personnel at Muster Point. Conducted a head count. Evacuate to a safer location if necessary.