

Parcel Map Check Report

Client: Prepared by:

Aztec Consultants

300 E. Mineral Ave. Ste 1 Littleton Co 80122

Date: 7/27/2021 9:33:35 AM

Parcel Name: BOUNDARY - 146

Description:

Process segment order counterclockwise: False

Enable mapcheck across chord: False

"North:8,024.991'" "East:19,578.932'"

Segment# 1: Line

"Course: S89° 57' 19""E" Length: 275.00'

"North: 8,024.777'" "East: 19,853.932'"

Segment# 2: Curve

Length: 495.03' Radius: 915.00'

"Delta: 30°59'53"" Tangent: 253.74'

Chord: 489.02' "Course: S74° 27' 23""E"

"Course In: S0° 02' 41""W" "Course Out: N31° 02' 34""E"

"RP North: 7,109.777'" "East: 19,853.217'"

"End North: 7,893.733'" "East: 20,325.063'"

Segment# 3: Line

"Course: S58° 57' 26""E" Length: 382.62'

"North: 7,696.424'" "East: 20,652.885'"

Segment# 4: Curve

Length: 470.89' Radius: 870.00'

"Delta: 31°00'41"" Tangent: 241.37'

Chord: 465.16' "Course: S74° 27' 47""E"

"Course In: N31° 02' 34""E" "Course Out: S0° 01' 53""W"

"RP North: 8,441.825'" "East: 21,101.525'"

"End North: 7,571.825'" "East: 21,101.048'"

Segment# 5: Line

"Course: S89° 58' 08""E" Length: 200.03'

"North: 7,571.717'" "East: 21,301.078'"

Segment# 6: Line

"Course: S0° 01' 43""W" Length: 779.65'

"North: 6,792.067'" "East: 21,300.689'"

Segment# 7: Line

"Course: N89° 57' 16""W" "Length: 1,722.71'"

"North: 6,793.437'" "East: 19,577.979'"

Segment# 8: Line

"Course: N0° 02' 41""E" "Length: 1,231.55'"

"North: 8,024.986'" "East: 19,578.941'"

"Perimeter: 5,557.47'" "Area: 1,751,353Sq.Ft."

Error Closure: 0.010 "Course: S58° 53' 30""E"
Error North : -0.0053 East: 0.0088

"Precision 1: 555,748.00"

COLORADO LAND SURVEY MONUMENT RECORD

Department of Regulatory Agencies
Board of Licensure for Architects, Professional Engineers and Professional Land Surveyors
1560 Broadway, Suite 1350
Denver, CO 80202

Phone (303) 894-7800; Fax (303) 894-2310; EMAIL aes@dora.state.co.us; V/TDD 711

RECEIVED
MAR 24 2014

COLO. ST. BD. OF LIC.

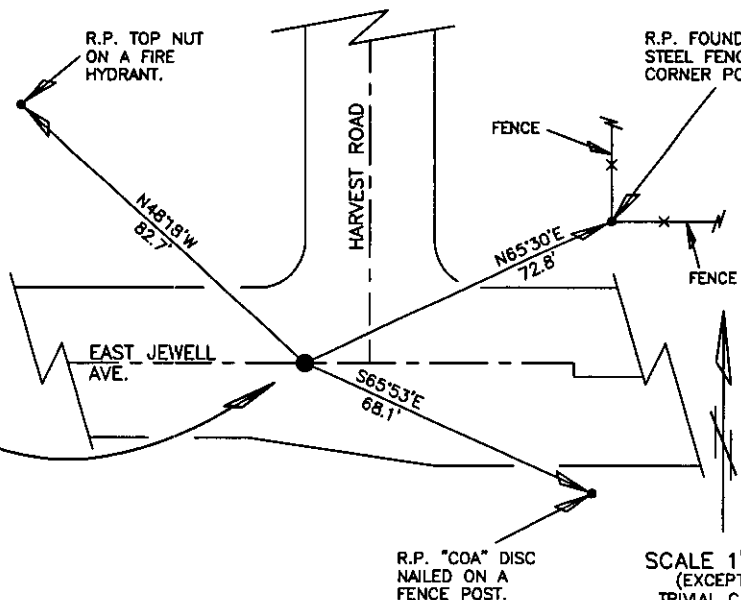
Report one monument only on this form - Reproduction of this form is **FOR A, P.E. AND PLS**
All items are to be filled in by the Land Surveyor using **PERMANENT BLACK LETTERING** and lines which can be reproduced.

1. TYPE OF MONUMENT: ☒ SECTION CORNER ☐ QUARTER CORNER ☐ SIXTEENTH CORNER ☐ OTHER _____
2. DESCRIPTION AND DATE OF MONUMENT FOUND:
ON THE DATE OF 02/07/2014 WE FOUND THE MONUMENT FOR THIS CORNER COMMON TO 4 SECTIONS WHICH IS A PRIVATE SURVEYOR'S 2 1/2" ALUMINUM CAP (LS 13155) 0.8' BENEATH THE SURFACE OF EAST JEWELL AVE. WHICH IS AN ASPHALT SURFACE ROAD. SOME OF THE MARKINGS ON THE ALUMINUM CAP ARE BADLY ERODED.
3. DESCRIPTION OF MONUMENT SET BY YOU TO PERPETUATE THE LOCATION OF THIS POINT:
WE SET REFERENCE POINTS FOR THIS CORNER AS SHOWN.
4. SKETCH SHOWING RELATIVE LOCATION OF MONUMENT, ACCESSORIES AND REFERENCE POINTS STATING WHETHER FOUND OR SET, SHOW SUPPORTING AND/OR CONTRADICTIONARY EVIDENCE WHERE APPLICABLE:

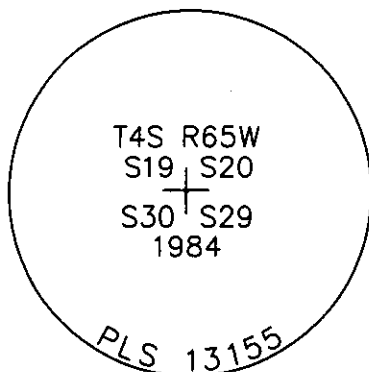
THE MONUMENT FOR THIS CORNER COMMON TO 4 SECTIONS IS A PRIVATE SURVEYOR'S 2 1/2" ALUMINUM CAP (LS 13155) 0.8' BENEATH THE SURFACE OF EAST JEWELL AVE. WHICH IS AN ASPHALT SURFACE ROAD. SOME OF THE MARKINGS ON THE ALUMINUM CAP ARE BADLY ERODED.

THIS MONUMENT IS FOR:

T4S R65W
S19 S20
S30 S29
1984
6TH P.M.



SCALE 1"=40'
(EXCEPT IN TRIVIAL CASES)
BEARINGS ARE RELATED TO WGS 84 WITH GPS OBSERVATIONS
DRAWN BY: NJM
P.C. D. P. SHANKS



Stamping on Cap

- a. Date of field Work to Establish, Restore or Rehabilitate Monument: 02/07/2014
- b. Date Monument was used as a Control corner: 02/07/2014

(Surveyor, do not fill in)

APR 30 2014

COLORADO BOARD OF LIC. FOR AES

RECEIVED AT OFFICE OF THE COUNTY CLERK _____ COUNTY

BY: _____

DATE: _____

Record to be filed numerically by Index Reference Number, then alphabetically by letter in the index reference number, then under appropriate Township, Range, and Meridian.

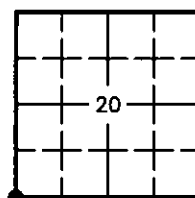
5. CERTIFICATION

This is to certify that I was in responsible charge of the surveying work described in this record and that to the best of my knowledge the information presented herein is true and correct.

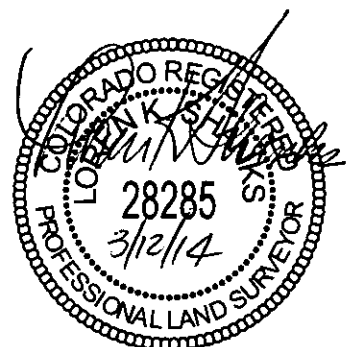
Name (Please Print): LOREN K. SHANKS
Firm Name: UELS, LLC
Firm Address: 85 SOUTH 200 EAST
VERNAL, UTAH 84078
Phone: 435-789-1017

6. LOCATION DIAGRAM

1" = 1 Mile



● = Location of Monument



Signature/Date through Seal

7. SEC 20 T 4S R 65W, 6th P.M.
COUNTY ARAPAHOE INDEX REF NUMBER 5-J

**8. SEC _____ T _____ R _____, _____ P.M.
COUNTY _____ INDEX REF NUMBER _____

** To be used only for monuments located on county lines



Dora
Department of Regulatory Agencies

Rev.02/01/2011

COLORADO LAND SURVEY MONUMENT RECORD

Department of Regulatory Agencies
Board of Licensure for Architects, Professional Engineers and Professional Land Surveyors
1560 Broadway, Suite 1350
Denver, CO 80202
Phone (303) 894-7800; Fax (303) 894-2310; EMAIL aes@dora.state.co.us; V/TDD 711

RECEIVED
APR 25 2014
GOLO ST. BD. OF LIC
FOR AES

Report one monument only on this form - Reproduction of this form is authorized. All items are to be filled in by the Land Surveyor using **PERMANENT BLACK LETTERING** and lines which are reproduced.

1. TYPE OF MONUMENT: ☐ SECTION CORNER ☒ QUARTER CORNER ☐ SIXTEENTH CORNER ☐ OTHER_____
2. DESCRIPTION AND DATE OF MONUMENT FOUND:
ON THE DATE OF 03/05/2014 WE FOUND THE LOCATION FOR THIS 1/4 CORNER OF MAXIMUM CONTROL BY A PROPORTIONATE METHOD. THE CORNER FALLS IN THE SURFACE OF A CONCRETE SIDEWALK; WE MADE A CROSS IN THE CONCRETE TO MARK THE POSITION OF THE CORNER. BECAUSE THE TRUE POSITION OF THE CORNER CANNOT BE MONUMENTED WE SET A WITNESS CORNER MONUMENT.
3. DESCRIPTION OF MONUMENT SET BY YOU TO PERPETUATE THE LOCATION OF THIS POINT:
WE SET A WITNESS CORNER MONUMENT FOR THIS 1/4 CORNER NORTH ALONG THE SECTION LINE 30' FROM THE TRUE CORNER. THE WITNESS MONUMENT IS A 2 1/2" ALUMINUM CAP ON A 3/4" REBAR 30" LONG FLUSH WITH THE GROUND AND MARKED AS SHOWN. THIS IS THE MONUMENT FOR THE WITNESS CORNER AND IS MARKED AS SHOWN.

WE REFERENCED THE WITNESS CORNER MONUMENT AS SHOWN.
4. SKETCH SHOWING RELATIVE LOCATION OF MONUMENT, ACCESSORIES AND REFERENCE POINTS STATING WHETHER FOUND OR SET, SHOW SUPPORTING AND/OR CONTRADICTORY EVIDENCE WHERE APPLICABLE:

THE WITNESS CORNER MONUMENT FOR THIS 1/4 CORNER IS A 2 1/2" ALUMINUM CAP ON A 3/4" BY 30" LONG REBAR MARKED AS SHOWN. THE WITNESS CORNER MONUMENT IS FLUSH WITH THE GROUND.

WC
T4S R65W
1/4
S19 | S20
2014
6TH P.M.

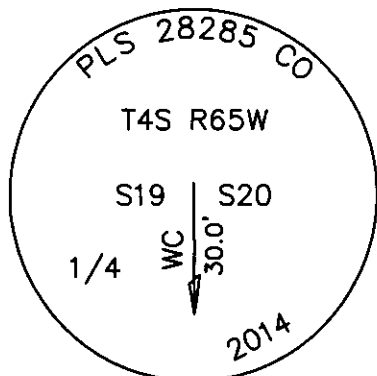
TRUE LOCATION OF THE
W 1/4 COR S20, T4S R65W
X IN CONCRETE.

R.P. SET A WASHER
MARKED LS 28285
WITH A NAIL IN THE
TOP OF THE CURB
IN A JOINT WITH A
NAIL.

R.P. SET A WASHER
MARKED LS 28285
WITH A NAIL IN THE
TOP OF THE CURB
IN A JOINT WITH A
NAIL.

HARVEST ROAD

SCALE 1"=40'
(EXCEPT IN
TRIVIAL CASES)
BEARINGS ARE RELATED
TO WGS 84 WITH
GPS OBSERVATIONS
DRAWN BY: NJM
P.C. D. NIELSEN



Stamping on Cap

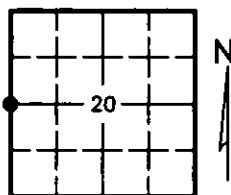
5. CERTIFICATION

This is to certify that I was in responsible charge of the surveying work described in this record and that to the best of my knowledge the information presented herein is true and correct.

Name (Please Print): LOREN K. SHANKS
Firm Name: UELS, LLC
Firm Address: 85 SOUTH 200 EAST
VERNAL, UTAH 84078
Phone: 435-789-1017

6. LOCATION DIAGRAM

1" = 1 Mile



● = Location of Monument



Signature/Date through Seal

7. SEC 20 T 4S R 65W, 6th P.M.
COUNTY ARAPAHOE INDEX REF NUMBER 5-L

**8. SEC _____ T _____ R _____, _____ P.M.
COUNTY _____ INDEX REF NUMBER _____

** To be used only for monuments located on county lines



Dora
Department of Regulatory Agencies

Rev.02/01/2011

- a. Date of field Work to Establish, Restore or Rehabilitate Monument: 03/05/2014
- b. Date Monument was used as a Control corner: 03/05/2014

(Surveyor, do not fill in)

ACCEPTED

MAY 31 2014

COLORADO STATE BOARD OF LAND SURVEYORS

RECEIVED AT OFFICE OF THE COUNTY CLERK
_____ COUNTY

BY: _____

DATE: _____

Record to be filed numerically by Index Reference Number, then alphabetically by letter in the index reference number, then under appropriate Township, Range, and Meridian.