

PUBLIC ART NARRATIVE

THE HARVEST CROSSING DEVELOPMENT PLAN IS A 208-ACRE SUBDIVISION LOCATED IN AURORA, COLORADO. THE SITE IS SITUATED NORTH OF YALE AVENUE, SOUTH OF JEWELL AVENUE, EAST OF HARVEST ROAD, AND WEST OF KEWAUNEE STREET. WITH THE ESTABLISHMENT OF A NEIGHBORHOOD AND COMMUNITY COMES THE OPPORTUNITY TO PROVIDE ITS RESIDENTS WITH PUBLIC ART, WHICH REFLECTS THE UNIQUE QUALITIES OF THE SITE AND ADDS MEANING TO THE COMMUNITY. THE SELECTED PIECES WORK IN HARMONY WITH THE DEVELOPMENT AS A WHOLE, WITH COMPLEMENTARY PIECES REPEATED THROUGHOUT FILINGS AND A CENTRAL THEME OF 'HARVEST-RELATED' CONCEPTS. A CENTRALIZED SCULPTURE LOCATED IN THE NEIGHBORHOOD PARK DRAWS VIEWERS INTO THE HIGHLIGHT OF THE DEVELOPMENT, WHILE THE THEME OF 'WHEAT' IS CARRIED INTO MULTIPLE FILINGS, CREATING A GATEWAY INTO THE NEIGHBORHOOD FROM MULTIPLE ENTRIES.

BUDGET

Harvest Crossing Public Art Budget	
Total Site Area	208 AC
Residential Rate	\$330.77/AC
Total Public Art Budget	\$68,800.16

Project Expenditures		
75%	Professional Artist Budget	\$51,600.12
5%	Public Art Plan Application Fee	\$3,440.00
10%	Future Maintenance & Repairs	\$6,880.02
10%	Project Coordination	\$6,880.02
	Total	\$68,800.16*

IMPLEMENTATION

ARTIST SELECTION -

THE ARTIST SHALL BE SELECTED VIA AN INVITATIONAL APPROACH. HARVEST CROSSING HAS SELECTED CHRIS WEED TO DESIGN AND PRODUCE THE CUSTOM SCULPTURES IN THE CENTRAL PARK. CHRIS WILL PREPARE A DESIGN FOR HARVEST CROSSING, UTILIZING A 'WHEAT' AND 'HARVEST' THEME.

Artist Contact Information:
Website: <http://christopherweedsculpture.com/>
Email: Chrisjweed@comcast.net
Phone: 720-224-4366

PRELIMINARY SCHEDULE -

THE SELECTED PIECES OF ARTWORK SHALL BE INSTALLED IN THE NEIGHBORHOOD PARK AT HARVEST CROSSING PLANNING AREA-6, THE CORNER OF YALE AND HARVEST IN PLANNING AREA-5, AND THE OPEN SPACE IN PLANNING AREA-2. THE PUBLIC ART PIECE PANEL SHOULD ANTICIPATE A MINIMUM OF 3-4 MONTHS FOR DESIGN, CONSTRUCTION, AND INSTALLATION. FINAL ART PIECE(S) SELECTION MUST BE CONFIRMED PRIOR TO THE BEGINNING OF PARK CONSTRUCTION. FINAL INSTALLATION SHALL BE WITHIN ONE (1) YEAR OF PARK COMPLETION. A MAINTENANCE PLAN TO FOLLOW UPON COMPLETION OF THE PROJECT.

ARTISTIC THEME

MATERIALS -

HARVEST CROSSING IS A COMMUNITY DEFINED BY THE VAST PLAINS OF CENTRAL COLORADO. LARGE SWATHS OF LAND WITH MOUNTAIN VIEWS TO THE WEST CREATE THE CHARACTER OF THIS SITE. A 'HARVEST' THEME HAS BEEN SELECTED TO CELEBRATE THESE DISTINCTIVE ATTRIBUTES AT HARVEST CROSSING. THE MAIN ELEMENTS THAT ARE REPEATED WITHIN THE DEVELOPMENT ARE STEEL AND WHEAT GRASS PATTERNS. PARKS WITHIN THE DEVELOPMENT MAY CONTAIN NATURAL THEMES AND/OR ORCHARDS, CELEBRATING THE FARMLAND QUALITY OF THE SITE. THE ACCOMPANYING PUBLIC ART SHOULD ALSO FEATURE ONE OR MORE OF THESE SAME ELEMENTS, TO REMAIN CONSISTENT WITH PROPOSED INFRASTRUCTURE.

STYLE -

THE INCLUSION OF PUBLIC ART AT HARVEST CROSSING IS EXPECTED TO ENHANCE THE ENVIRONMENT, TRANSFORM THE LANDSCAPE, AND HEIGHTEN AWARENESS OF THE NATURE THAT SURROUNDS THIS DISTINCTIVE SITE. GIVEN THESE GUIDELINES, THE HARVEST CROSSING PUBLIC ART PLAN RECOMMENDS THE ART TAKE ON A MORE SCULPTURAL FORM, CREATING GATEWAYS INTO PARKS AND OTHER NEIGHBORHOOD SPACES. REVERENCE WILL BE GIVEN TO PIECES HIGHLIGHTING METAL, STEEL, OR BRONZE, WITH A WHIMSICAL, NATURAL CHARACTER.

SAMPLE IMAGES -

THE FOLLOWING IMAGE SERVES AS AN EXAMPLE OF THE DESIRED MATERIALS AND THEMES FOR THE PUBLIC ART AT HARVEST CROSSING:

SCULPTURE IMAGE



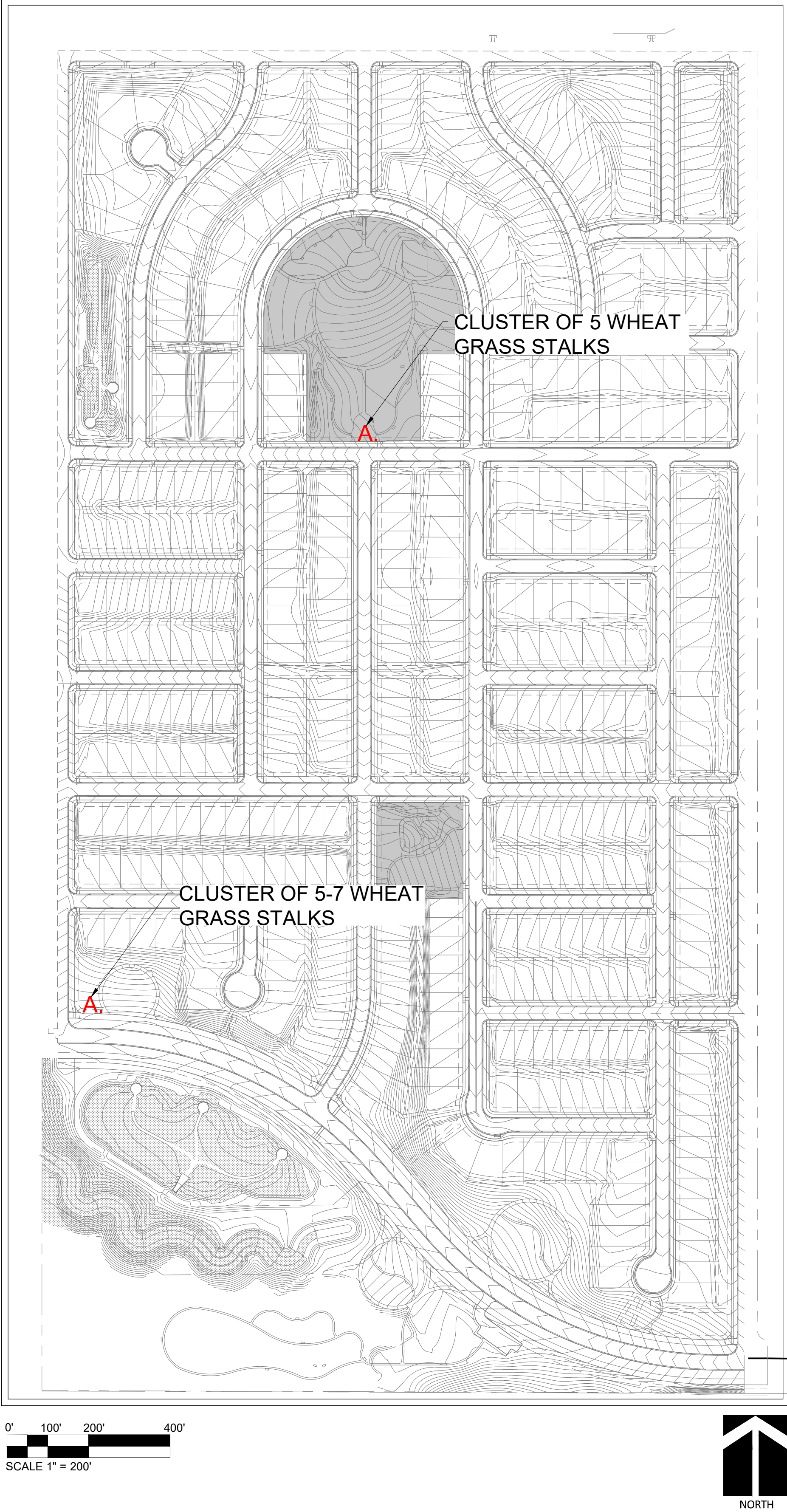
LOCATED IN CENTRAL PARK & AT INTERSECTION OF YALE AVE AND HARVEST RD.

OVERALL LOCATIONS

THE SITE LOCATIONS HAVE BEEN IDENTIFIED FOR THE ART INSTALLATION. THE SITES ARE LOCATED WITHIN THE NEIGHBORHOOD PARK (PLANNING AREA-6) AT THE CULMINATIONS OF THE CENTRAL SPINE ROAD, IN THE OPEN SPACE IN PLANNING AREA-2, AND AT THE CORNER OF YALE AVENUE AND HARVEST ROAD. AT THESE LOCATIONS, THE ART SERVES AS BOTH A GATEWAY AND A FOCAL POINT, INVITING PARKGOERS AND PEDESTRIANS, AS WELL AS VISITORS IN VEHICLES, INTO THE NEIGHBORHOOD AND PROVING YEAR-ROUND VISUAL INTEREST

- a. PLANNING AREA-6 PUBLIC ART SITE (PARK)
THIS NEIGHBORHOOD PARK SERVES AS THE CENTRAL FEATURE TO HARVEST CROSSING RESIDENTS. THE SELECTED PIECE SHALL BE PLACED WITHIN THE VICINITY OF THE SOUTHERN PLAZA AND THE NORTHERN PLAZA, VISIBLE FROM THE SPINE ROAD THAT RUNS THROUGH THE CENTER OF THE SITE AND CULMINATES IN THE LARGE PARK. THE LANDSCAPE ARCHITECT SHALL IDENTIFY THE FINAL LOCATION DURING THE SITE PLAN PROCESS. THE NEIGHBORHOOD PARK IS TO REMAIN PART OF THE METRO DISTRICT.
- b. PLANNING AREA-5 PUBLIC ART SITE (OPEN SPACE)
THIS OPEN SPACE IS LOCATED AT THE CORNER OF HARVEST ROAD AND YALE AVENUE, AND WILL SERVE AS A MAJOR GATEWAY INTO THE HARVEST CROSSING NEIGHBORHOOD. ART IN THIS LOCATION WILL HELP TO ACTIVATE THE OPEN SPACE AND BE AN EYE-CATCHING AND ICONIC LANDMARK, SETTING THE DEFINING THE CHARACTER OF THE NEIGHBORHOOD TO VEHICULAR TRAFFIC AND PEDESTRIANS. LOCATION IDENTIFIED WITH THIS PA-5 SITE PLAN. THE OPEN SPACE IS TO REMAIN PART OF THE METRO DISTRICT
- c. PLANNING AREA-2 PUBLIC ART SITE (OPEN SPACE / POCKET PARK)
THIS OPEN SPACE IS LOCATED ADJACENT TO ONE OF THE PRIMARY ENTRIES INTO THE SITE OFF OF KEWAUNEE STREET. ART IN THIS LOCATION WILL HELP TO ACTIVATE THE OPEN SPACE AND BE AN ICONIC VISUAL POINT AT A CENTRAL LOCATION WHERE IT CAN BE ENJOYED BY MANY. THE SOUTHERN END OF THIS PARK, VISIBLE FROM THE ROADWAY IS THE SPECIFIC LOCATION IDENTIFIED FOR THIS FILING. THE THE OPEN SPACE IS TO REMAIN PART OF THE METRO DISTRICT.

LOCATIONS:



SITE PLAN W/ ADJUSTMENT

HARVEST CROSSING PA. 5, 6, 7 & 9

AURORA, COLORADO

ISSUE RECORD	
SUBMITTAL # 1	06/08/2022
SUBMITTAL # 2	09/10/2022
SUBMITTAL # 3	09/29/2022
SUBMITTAL # 4	03/27/2024

PROJECT INFORMATION	
PROJECT #:	2021-40
DRAWN BY:	CD
CHECKED BY:	AH

PUBLIC ART PLAN

44

44 OF 45



PLANWEST

767 Santa Fe Drive
Denver, CO 80204
303-741-1411
planwest.com

OWNER / CLIENT

JEN COLORADO 20, LLC
7200 S. Alton Way, STE C-100
Centennial, CO 80112
JEN20@JENWEEDCROSS.COM

ENGINEER

KIMLEY-HORN
1500 WEST 10TH STREET, STE 1000
DENVER, CO 80202
303-225-2500

PLANNING
SITE DESIGN
ENTIREMENTS
LANDSCAPE ARCHITECTURE