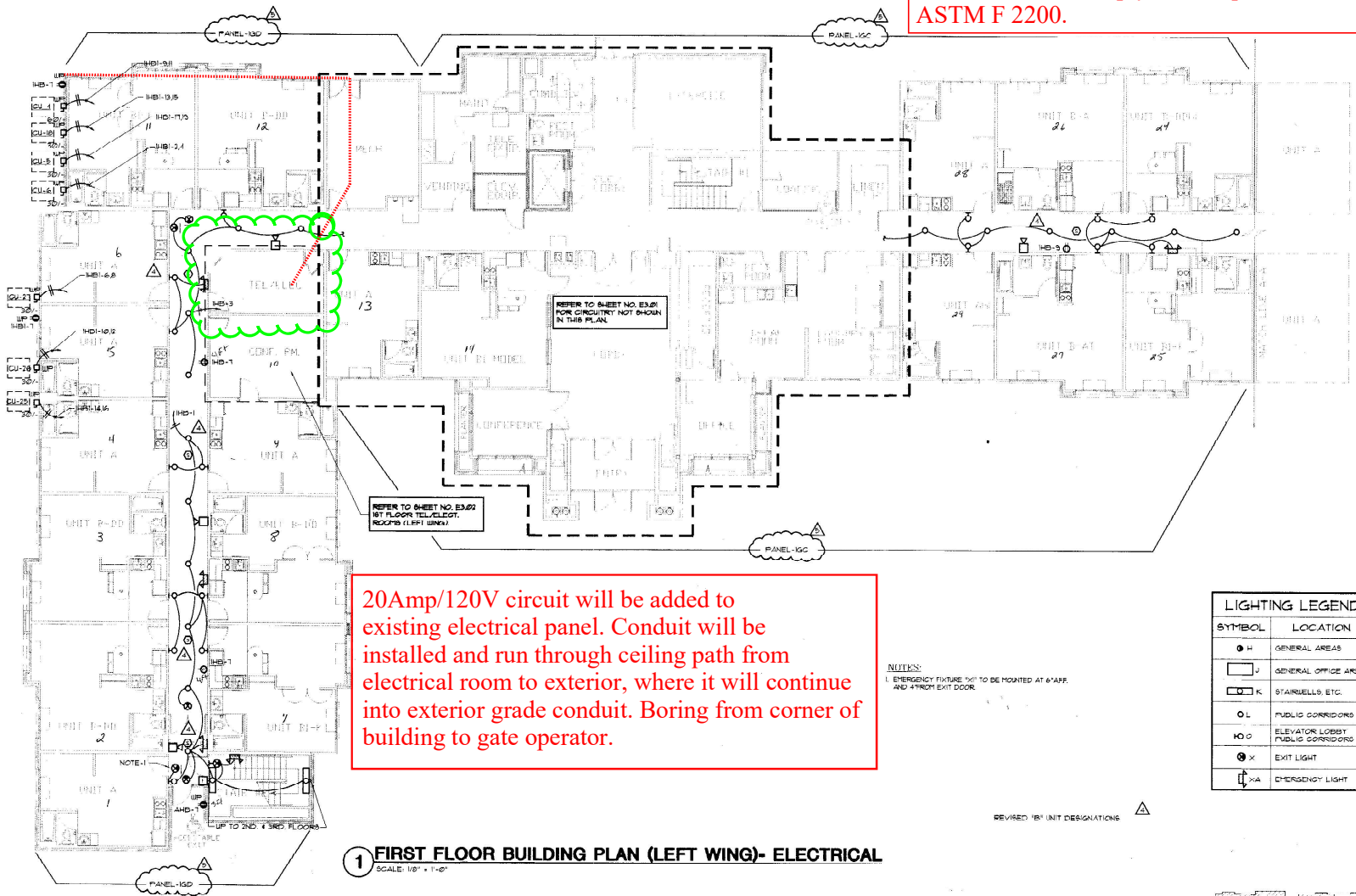


# Electrical Drawing #1 - West Gate Power Source

Electric gate operators, where provided, shall be listed in accordance with UL 325. Gates intended for automatic operation shall be designed, constructed and installed to comply with requirements of ASTM F 2200.

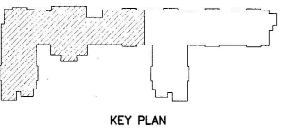


20Amp/120V circuit will be added to existing electrical panel. Conduit will be installed and run through ceiling path from electrical room to exterior, where it will continue into exterior grade conduit. Boring from corner of building to gate operator.

NOTES:  
1. EMERGENCY FIXTURES TO BE MOUNTED AT 6' AFF.  
AND 4" FROM EXIT DOOR.

LIGHTING LEGEND	
SYMBOL	LOCATION
● H	GENERAL AREAS
□ J	GENERAL OFFICE AREA
□ K	STAIRWELLS, ETC.
○ L	PUBLIC CORRIDORS
○ M	ELEVATOR LOBBY
○ N	PUBLIC CORRIDORS
○ X	EXIT LIGHT
□ A	EMERGENCY LIGHT

REVISED 'B' UNIT DESIGNATIONS



REVISIONS

NO.	ITEM	DATE
1		10-03-97
2		01-05-98

Homegate Studios & Suites

Aurora, Colorado

bei

basharkhah engineering incorporated

consulting engineers

5000 geniville way, #203

dallas, tx 75206

PH. (214) 692-5186

DRAWN BY: MG

CHECKED BY: SO

DATE: 08-16-97

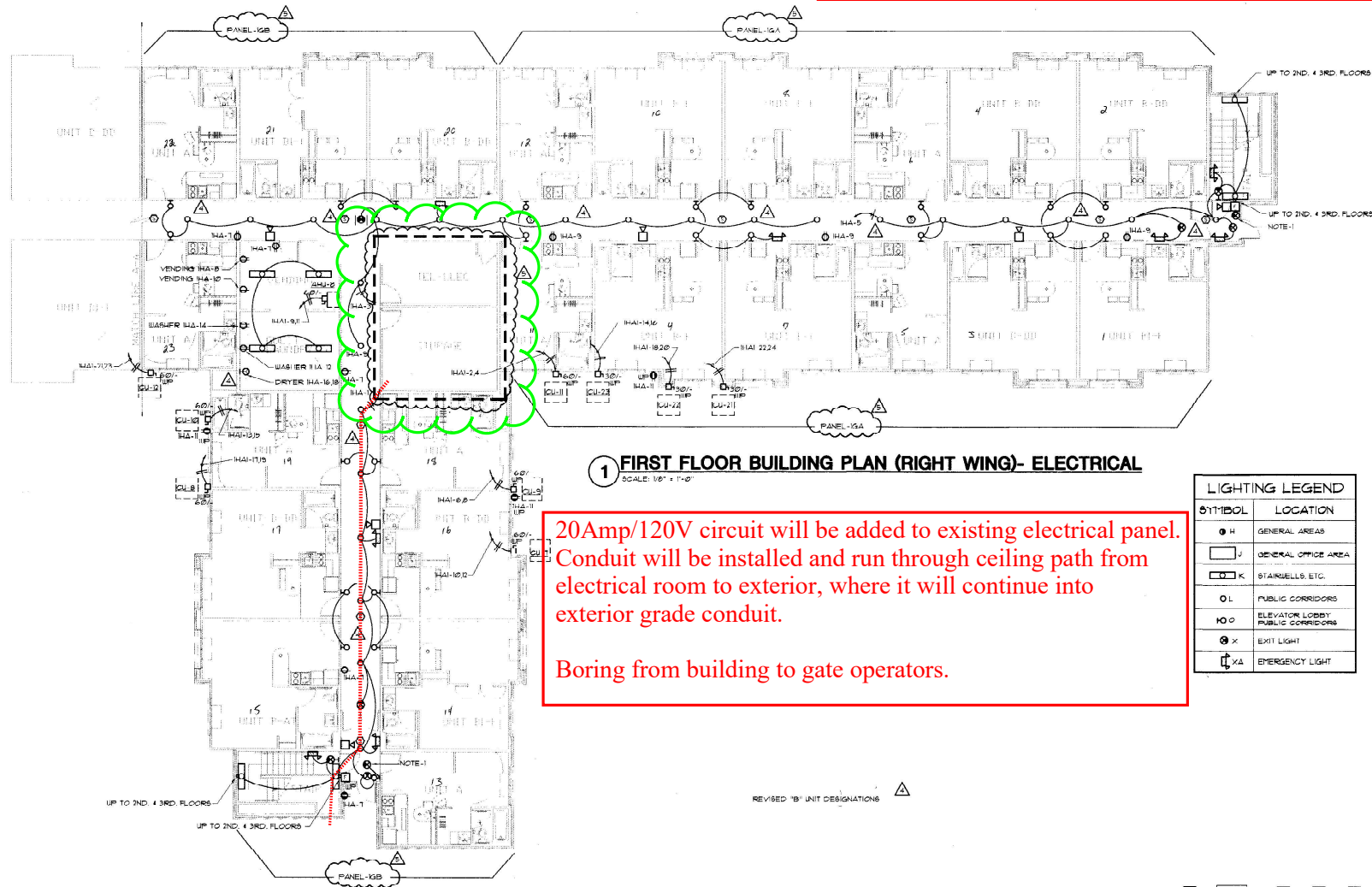
DATE:

PROJECT: 97135

SHEET: E2.01

# Electrical Drawing #2 - South and East Gate Power Sources

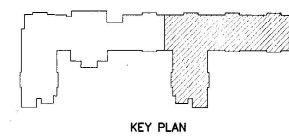
Electric gate operators, where provided, shall be listed in accordance with UL 325. Gates intended for automatic operation shall be designed, constructed and installed to comply with requirements of ASTM F 2200.



20Amp/120V circuit will be added to existing electrical panel. Conduit will be installed and run through ceiling path from electrical room to exterior, where it will continue into exterior grade conduit.

Boring from building to gate operators.

LIGHTING LEGEND	
SYMBOL	LOCATION
● H	GENERAL AREAS
□ J	GENERAL OFFICE AREA
□ K	STAIRWELLS, ETC.
○ L	PUBLIC CORRIDORS
○ O	ELEVATOR LOBBY
○ P	PUBLIC CORRIDORS
○ X	EXIT LIGHT
⚡	EMERGENCY LIGHT



NO. 1  
REVISIONS  
DATE  
10-03-97  
01-02-98

Homegate Studios & Suites  
Aurora, Colorado

bei  
bosharkhah  
engineering  
incorporated  
consulting engineers

4500 greenwood ave #505  
aurora, colorado 80016  
TEL (303) 692-5186

UNKNW BY: MG  
CHECKED BY: SG  
DATE: 08-18-97  
DATE:  
DATE:  
PROJECT: 97135

SHEET: E2.04