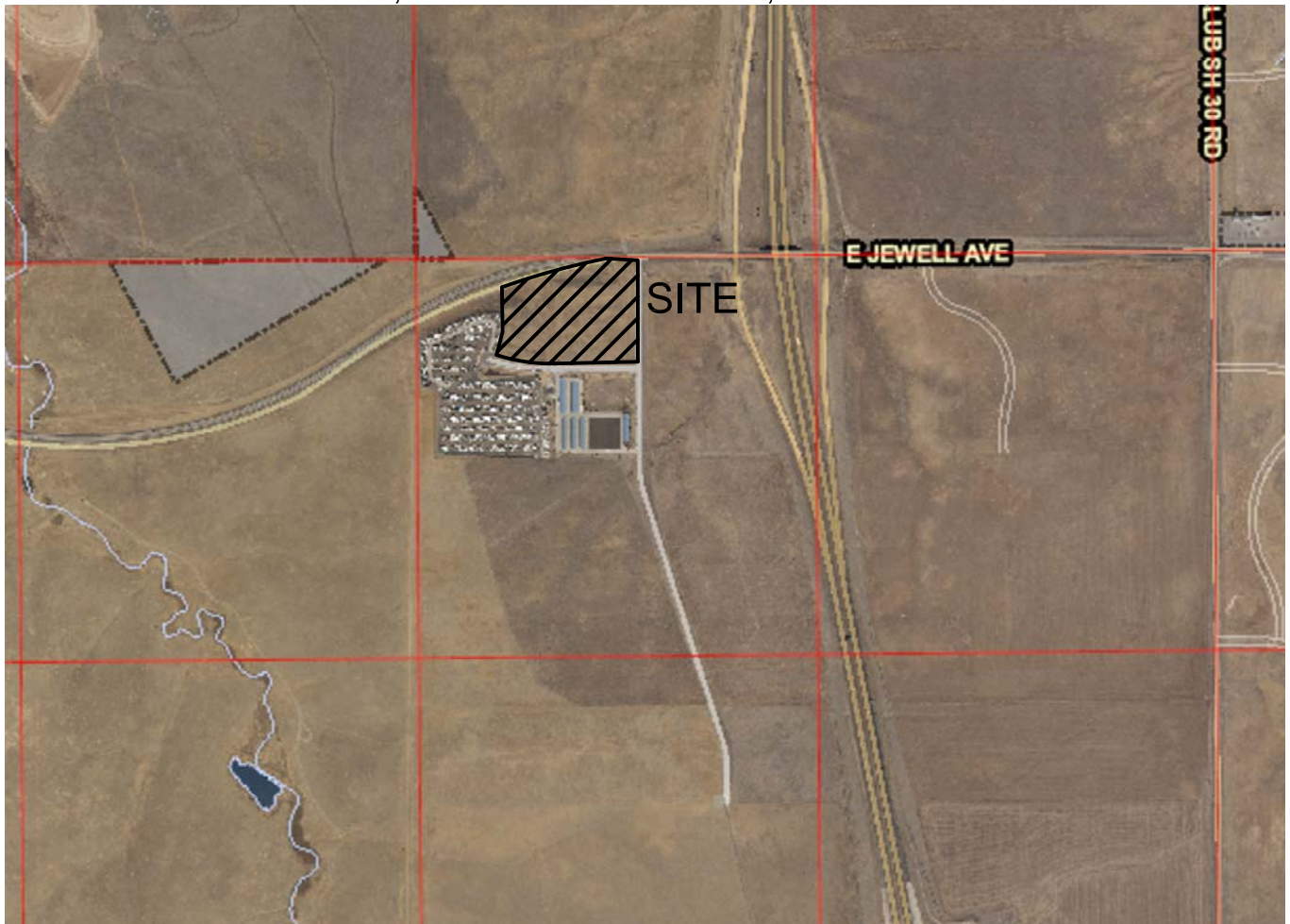


LANDINGS AT JEWELL INFRASTRUCTURE SITE PLAN

A PORTION OF THE NORTHWEST 1/4 OF SECTION 25, TOWNSHIP 4 SOUTH,
RANGE 66 WEST OF THE 6TH PRINCIPAL MERIDIAN
CITY OF AURORA, COUNTY OF ARAPAHOE, STATE OF COLORADO



NORTH

VICINITY MAP

1"=2000'