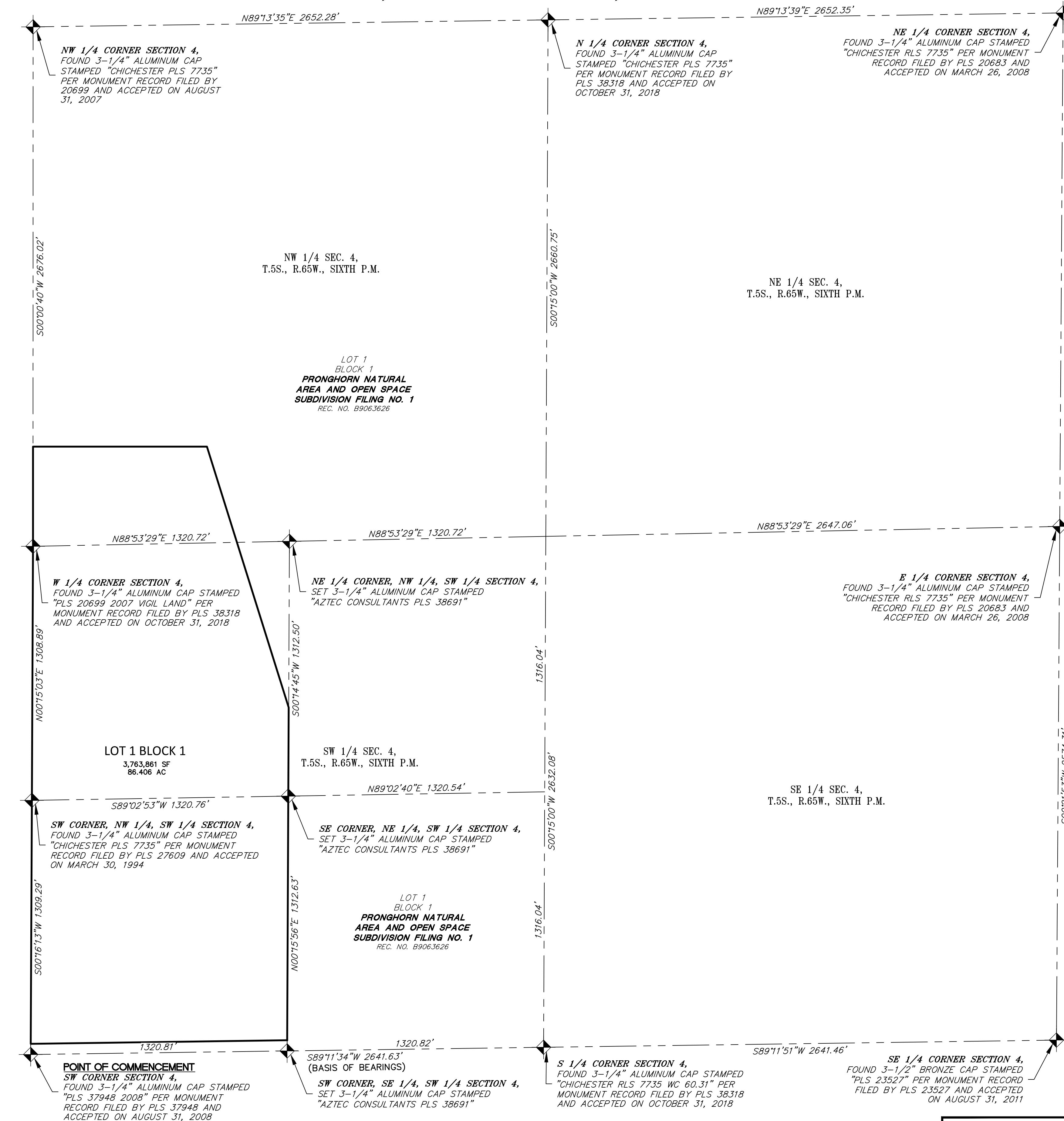


CERTIFICATION OF DEDICATION AND OWNERSHIP

S H E E T 1 O F 7

AURORA SEAM SUBDIVISION FILING NO. 1
A RESUBDIVISION OF A PORTION OF LOT 1, BLOCK 1, PRONGHORN NATURAL AREA AND OPEN SPACE
SUBDIVISION FILING NO. 1 AND THE SOUTHWEST QUARTER OF THE SOUTHWEST QUARTER LOCATED IN THE
WEST HALF OF SECTION 4, TOWNSHIP 5 SOUTH, RANGE 65 WEST OF THE SIXTH PRINCIPAL MERIDIAN,
CITY OF AURORA, COUNTY OF ARAPAHOE, STATE OF COLORADO.



FOR REVIEW

FOR AND ON BEHALF OF
AZTEC CONSULTANTS, INC

<div><div>AZTEC</div><div>CONSULTANTS, INC.</div></div>	<div>300 East Mineral Ave., Suite 1 Littleton, Colorado 80122 Phone: (303) 713-1898 Fax: (303) 713-1897 www.aztecconsultants.com</div>	<div>FINAL PLAT</div> <div>CITY OF AURORA</div>		DATE OF PREPARATION:	03-25-2020
				SCALE:	1"=300'
		AzTec Proj. No.: 23420-07	Drawn By: RBA	15151 E. ALAMEDA PARKWAY AURORA, COLORADO 80012 (303) 739-7000	

AURORA SEAM SUBDIVISION FILING NO. 1

A RESUBDIVISION OF A PORTION OF LOT 1, BLOCK 1, PRONGHORN NATURAL AREA AND OPEN SPACE SUBDIVISION FILING NO. 1 AND THE SOUTHWEST QUARTER OF THE SOUTHWEST QUARTER LOCATED IN THE WEST HALF OF SECTION 4, TOWNSHIP 5 SOUTH, RANGE 65 WEST OF THE SIXTH PRINCIPAL MERIDIAN,
CITY OF AURORA, COUNTY OF ARAPAHOE, STATE OF COLORADO.

NE 1/4, SW 1/4 SEC. 4,
T.5S., R.65W., SIXTH P.M.

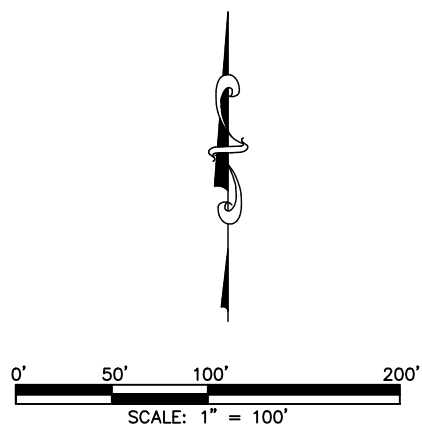
LOT 1
BLOCK 1
PRONGHORN NATURAL AREA AND OPEN
SPACE SUBDIVISION FILING NO. 1
REC. NO. B9063626

SOUTHEAST CORNER OF THE NORTHEAST
1/4 OF THE SOUTHWEST 1/4 SECTION 4,
T.5S., R.65W., 6TH P.M.
SET 3-1/4" ALUMINUM CAP STAMPED
"AZTEC CONSULTANTS PLS 38691"

SE 1/4, SW 1/4 SEC. 4,
T.5S., R.65W., SIXTH P.M.

MONUMENT SYMBOL LEGEND

- SET NO. 5 REBAR WITH 1-1/4" GREEN PLASTIC CAP STAMPED "AZTEC LS 38691"
- ¹ ● FOUND 2-1/2" ALUMINUM CAP STAMPED "LAND CONSULTANTS PLS 20699"
- ² ● FOUND 1-1/4" YELLOW PLASTIC CAP STAMPED "LS 27609"
- ◆ FOUND SECTION CORNER AS DESCRIBED HEREON



FOR REVIEW

FOR AND ON BEHALF OF
AZTEC CONSULTANTS, INC.

AzTEC
CONSULTANTS, INC.

300 East Mineral Ave., Suite 1
Littleton, Colorado 80122
Phone: (303) 713-1898
Fax: (303) 713-1897
www.aztecconsultants.com

FINAL PLAT
CITY OF AURORA

15151 E. ALAMEDA PARKWAY
AURORA, COLORADO 80012
(303) 739-7000

DATE OF
PREPARATION: 03-25-2020

SCALE: 1"=100'

SHEET 3 OF 7

AzTec Proj. No: 23420-07

Drawn By: RBA

AURORA SEAM SUBDIVISION FILING NO. 1

A RESUBDIVISION OF A PORTION OF LOT 1, BLOCK 1, PRONGHORN NATURAL AREA AND OPEN SPACE SUBDIVISION FILING NO. 1 AND THE SOUTHWEST QUARTER OF THE SOUTHWEST QUARTER LOCATED IN THE WEST HALF OF SECTION 4, TOWNSHIP 5 SOUTH, RANGE 65 WEST OF THE SIXTH PRINCIPAL MERIDIAN,
CITY OF AURORA, COUNTY OF ARAPAHOE, STATE OF COLORADO.

NORTHWEST 1/4 CORNER SECTION 4,
T5S, R65W, 6TH P.M.,
FOUND 3-1/4" ALUMINUM CAP AT
GRADE STAMPED "CHICHESTER RLS 7735"

LOT 1
BLOCK 1
PRONGHORN NATURAL
AREA AND OPEN SPACE
SUBDIVISION FILING NO. 1
REC. NO. B9063626

NW 1/4 SEC. 4,
T.5S., R.65W., SIXTH P.M.

NORTHEAST 1/4 CORNER OF THE
NORTHWEST 1/4 OF THE SOUTHWEST
1/4 SECTION 4,
T5S, R65W, 6TH P.M.,
SET 3-1/4" ALUMINUM CAP STAMPED
"AZTEC CONSULTANTS PLS 38691"

WEST 1/4 CORNER SECTION 4,
T5S, R65W, 6TH P.M.,
FOUND 3-1/4" ALUMINUM CAP AT GRADE
STAMPED "PLS 20699 2007 VIGIL LAND"

UNPLATTED

SE 1/4 SEC. 5,
T.5S., R.65W., SIXTH P.M.

NE 1/4, SW 1/4 SEC. 4,
T.5S., R.65W., SIXTH P.M.

LOT 1 BLOCK 1
3,741,408 SF
85.891 AC

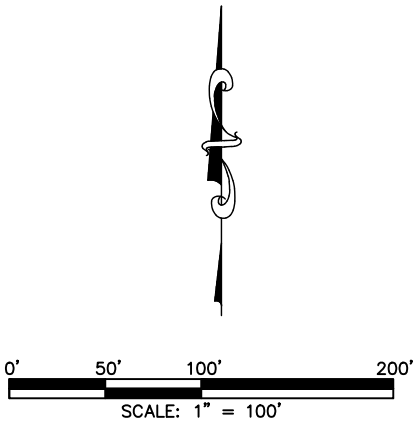
NW 1/4, SW 1/4 SEC. 4,
T.5S., R.65W., SIXTH P.M.

LOT 1
BLOCK 1
PRONGHORN NATURAL AREA AND OPEN
SPACE SUBDIVISION FILING NO. 1
REC. NO. B9063626

SOUTHEAST CORNER OF THE NORTHEAST
1/4 OF THE SOUTHWEST 1/4 SECTION
T.5S., R.65W., 6TH P.M.
SET 3-1/4" ALUMINUM CAP STAMPED
"AZTEC CONSULTANTS PLS 38691"

MONUMENT SYMBOL LEGEND

- SET NO. 5 REBAR WITH 1-1/4" GREEN PLASTIC CAP STAMPED "AZTEC LS 38691"
- 1 ● FOUND 2-1/2" ALUMINUM CAP STAMPED "LAND CONSULTANTS PLS 20699"
- 2 ● FOUND 1-1/4" YELLOW PLASTIC CAP STAMPED "LS 27609"
- ◆ FOUND SECTION CORNER AS DESCRIBED HEREON



FOR REVIEW

FOR AND ON BEHALF OF
AZTEC CONSULTANTS, INC

AzTEC
CONSULTANTS, INC.

300 East Mineral Ave., Suite 1
Littleton, Colorado 80122
Phone: (303) 713-1898
Fax: (303) 713-1897
www.aztecconsultants.com

FINAL PLAT
CITY OF AURORA

15151 E. ALAMEDA PARKWAY
AURORA, COLORADO 80012
(303) 739-7000

DATE OF
PREPARATION: 03-25-2020

SCALE: 1"=100'

SHEET 4 OF 7

AzTec Proj. No: 23420-07 Drawn By: RBA

A RESUBDIVISION OF A PORTION OF LOT 1, BLOCK 1, PRONGHORN
NATURAL AREA AND OPEN SPACE SUBDIVISION FILING NO. 1 AND THE
SOUTHWEST QUARTER OF THE SOUTHWEST QUARTER LOCATED IN THE
WEST HALF OF SECTION 4, TOWNSHIP 5 SOUTH, RANGE 65 WEST OF
THE SIXTH PRINCIPAL MERIDIAN,
CITY OF AURORA, COUNTY OF ARAPAHOE, STATE OF COLORADO.

NW 1/4 SEC. 4,
T.5S., R.65W., SIXTH P.M.

WEST 1/4 CORNER SECTION 4,
T5S, R65W, 6TH P.M.,
FOUND 3-1/4" ALUMINUM CAP AT GRADE
STAMPED "PLS 20699 2007 VIGIL LAND"

SE 1/4 SEC. 5,
T.5S., R.65W., SIXTH P.M.

NW 1/4, SW 1/4 SEC. 4,
T.5S., R.65W., SIXTH P.M.

LOT 1
BLOCK 1
— PRONGHORN NATURAL AREA AND OPEN
SPACE SUBDIVISION FILING NO. 1
REC. NO. B9063626

SOUTHEAST CORNER OF THE NORTHEAST
1/4 OF THE SOUTHWEST 1/4 SECTION 4,
T.5S., R.65W., 6TH P.M.
SET 3-1/4" ALUMINUM CAP STAMPED
"AZTEC CONSULTANTS PLS 38691"

○ SET NO. 5 REBAR WITH 1-1/4" GREEN PLASTIC CAP
 STAMPED "AZTEC LS 38691"
 1 ● FOUND 2-1/2" ALUMINUM CAP STAMPED "LAND
 CONSULTANTS PLS 20699"
 2 ● FOUND 1-1/4" YELLOW PLASTIC CAP STAMPED "LS
 27609"
 FOUND SECTION CORNER AS DESCRIBED HEREON



AZTEC
CONSULTANTS, INC.

300 East Mineral Ave., Suite 1
Littleton, Colorado 80122
Phone: (303) 713-1898
Fax: (303) 713-1897
www.aztecconsultants.com

AzTec Proj. No.: 23420-07 Drawn By: RBA

15151 E. ALAMEDA PARKWAY
AURORA, COLORADO 80012
(303) 739-7000

DATE OF	03-25-2020
---------	------------

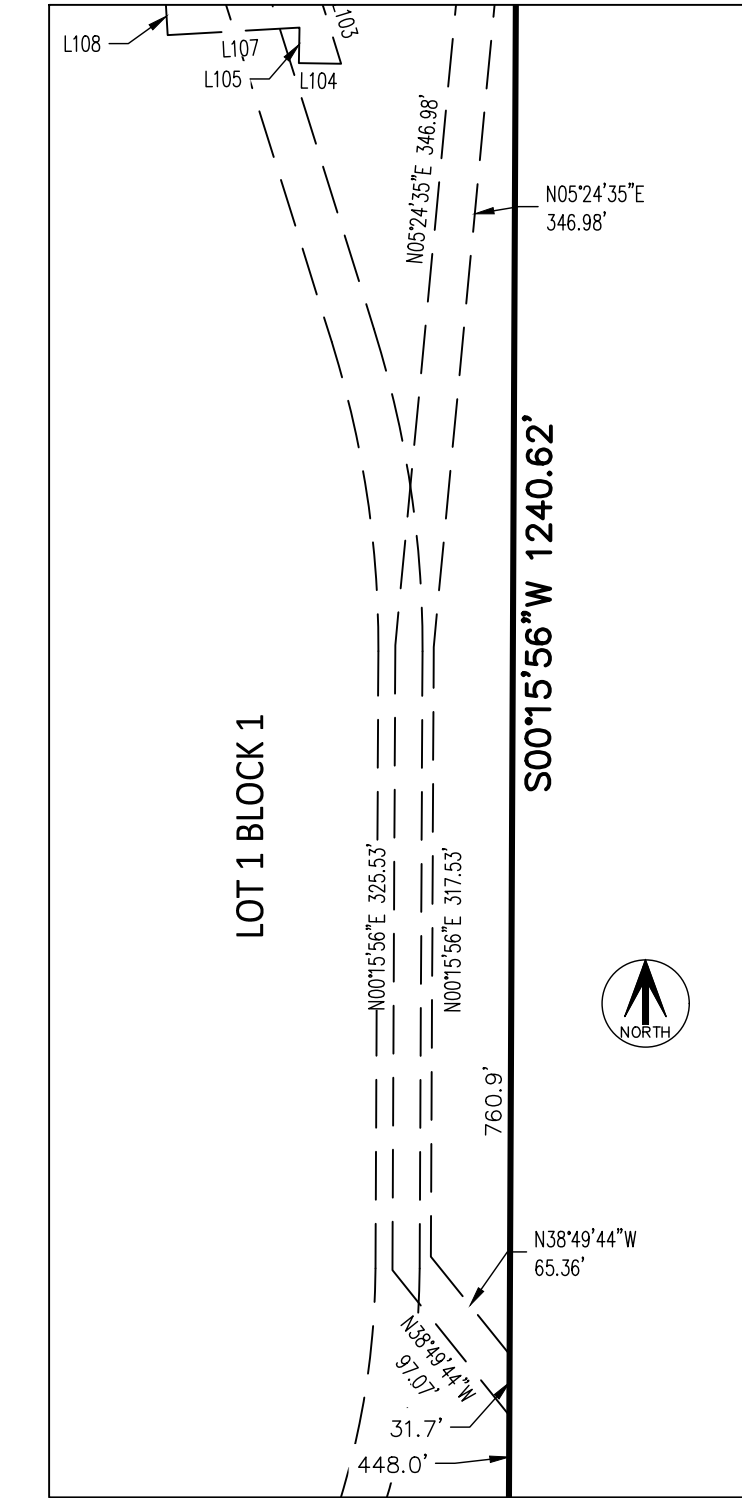
SCALE: 1"=100'

SHEET 5 OF 7

AURORA SEAM SUBDIVISION FILING NO. 1

A RESUBDIVISION OF A PORTION OF LOT 1, BLOCK 1, PRONGHORN NATURAL AREA AND OPEN SPACE SUBDIVISION FILING NO. 1 AND THE SOUTHWEST QUARTER OF THE SOUTHWEST QUARTER LOCATED IN THE WEST HALF OF SECTION 4, TOWNSHIP 5 SOUTH, RANGE 65 WEST OF THE SIXTH PRINCIPAL MERIDIAN,
CITY OF AURORA, COUNTY OF ARAPAHOE, STATE OF COLORADO.

LINE TABLE			LINE TABLE			LINE TABLE			CURVE			
LINE	BEARING	LENGTH	LINE	BEARING	LENGTH	LINE	BEARING	LENGTH	CURVE	DELTA	RADIUS	LENGTH
L1	N45°30'00"W	13.68'	L51	N00°00'00"E	48.22'	L101	N62°42'03"E	11.34'	C1	72°35'59"	30.00'	38.01'
L2	N90°00'00"E	54.45'	L52	N45°00'00"E	27.99'	L102	S62°42'03"W	11.35'	C2	107°24'01"	15.00'	28.12'
L3	S17°24'01"E	24.41'	L53	N00°00'00"E	47.12'	L103	S17°24'01"E	41.24'	C3	19°30'35"	57.50'	19.58'
L4	S72°35'59"W	15.90'	L54	S51°35'35"E	16.14'	L104	N89°02'27"W	22.02'	C4	97°09'40"	29.00'	49.18'
L5	S17°24'01"E	20.00'	L55	N88°16'43"E	97.32'	L105	N00°57'33"E	18.42'	C5	90°00'00"	15.00'	23.56'
L6	N72°35'59"E	35.90'	L56	N17°23'39"W	44.05'	L106	N86°46'11"E	79.27'	C6	90°00'00"	51.00'	80.11'
L7	N00°00'00"E	8.47'	L57	S72°35'59"W	28.81'	L107	S86°46'11"W	68.75'	C7	90°00'00"	20.00'	31.42'
L8	N00°15'03"E	20.00'	L58	S17°26'11"E	21.14'	L108	N03°13'49"W	20.00'	C8	73°50'06"	20.00'	25.77'
L9	S89°58'05"W	46.23'	L59	N72°33'49"E	33.62'	L109	N72°35'59"E	7.48'	C9	73°50'06"	27.00'	34.79'
L10	N72°35'59"E	27.61'	L60	N72°35'59"E	62.42'	L110	S90°00'00"E	4.15'	C10	64°55'48"	27.00'	30.60'
L11	S17°24'01"E	30.51'	L61	S72°35'59"W	23.00'	L111	S72°35'59"W	17.48'	C11	64°55'48"	20.00'	22.66'
L12	S72°35'59"W	6.00'	L62	N72°35'59"E	9.93'	L112	S17°24'01"E	6.32'	C12	90°00'00"	20.00'	31.42'
L13	S17°24'01"E	20.00'	L63	S17°24'01"E	11.00'	L113	S17°24'01"E	8.89'	C13	90°00'00"	4.00'	6.28'
L14	S72°35'59"W	6.00'	L64	N72°35'59"E	30.00'	L114	S72°35'59"W	30.00'	C14	90°00'00"	4.00'	6.28'
L15	S17°24'01"E	28.91'	L65	N72°35'59"E	14.13'	L115	N72°35'59"E	30.00'	C15	90°00'00"	4.00'	6.28'
L16	N28°20'37"E	39.84'	L66	S05°32'03"E	43.13'	L116	N90°00'00"W	45.04'	C16	90°00'00"	4.00'	6.28'
L17	N72°35'59"E	20.00'	L67	N72°35'59"E	77.26'	L117	N90°00'00"E	2.04'	C17	26°40'15"	50.00'	23.27'
L18	S17°24'01"E	27.65'	L68	N17°24'01"W	31.63'	L118	S72°35'59"W	3.95'	C18	112°40'18"	29.00'	57.03'
L19	N28°20'37"E	6.82'	L69	N72°35'59"E	10.00'				C19	12°19'58"	50.00'	10.76'
L20	S70°51'19"E	25.16'	L70	S17°24'01"E	31.63'				C20	107°24'01"	25.00'	46.86'
L21	N19°08'41"E	20.00'	L71	N72°35'59"E	96.26'				C21	90°00'00"	29.00'	45.55'
L22	S70°51'19"E	28.63'	L72	N72°35'59"E	27.58'				C22	90°00'00"	29.00'	45.55'
L23	S51°35'35"E	14.93'	L73	N78°42'57"E	20.17'				C23	107°24'01"	30.00'	56.23'
L24	N58°48'11"E	38.95'	L74	S67°21'46"E	31.67'				C24	72°35'59"	30.00'	38.01'
L25	N58°48'11"E	40.59'	L75	N05°32'03"W	41.00'							
L26	N72°35'59"E	33.43'	L76	S72°35'59"W	36.93'							
L27	N17°24'01"W	20.00'	L77	S75°10'15"W	24.13'							
L28	N72°35'59"E	33.59'	L78	N75°10'15"E	33.03'							
L29	S72°35'59"W	63.73'	L79	S72°35'59"W	33.00'							
L30	N90°00'00"W	40.39'	L80	N75°10'15"E	20.02'							
L31	N17°24'01"W	20.96'	L81	S51°35'35"E	18.81'							
L32	S90°00'00"E	46.66'	L82	N72°35'59"E	66.14'							
L33	N75°10'15"E	58.21'	L83	S62°24'01"E	41.85'							
L34	S14°49'45"E	20.00'	L84	S17°24'01"E	54.10'							
L35	S75°10'15"W	54.30'	L85	S78°42'57"W	4.95'							
L36	N17°24'01"W	16.68'	L86	S38°15'23"W	45.45'							
L37	S72°35'59"W	13.00'	L87	S72°35'59"W	13.41'							
L38	N17°24'01"W	7.68'	L88	N17°24'01"W	49.74'							
L39	S72°35'59"W	75.22'	L89	N62°24'01"W	41.85'							
L40	S37°31'42"E	23.08'	L90	N72°35'59"E	43.00'							
L41	S52°28'18"W	20.00'	L91	N13°37'35"E	38.26'							
L42	N37°31'42"W	30.41'	L92	N42°25'42"W	74.58'							
L43	S72°35'59"W	20.00'	L93	N38°15'23"E	41.36'							
L44	N17°24'01"W	102.95'	L94	N78°42'57"E	26.70'							
L45	N45°30'00"W	29.03'	L95	S17°24'01"E	33.37'							
L46	N90°00'00"E	23.56'	L96	N72°35'59"E	20.00'							
L47	N06°43'33"E	26.62'	L97	N17°24'01"W	31.22'							
L48	N12°19'31"E	60.95'	L98	S62°42'03"W	51.21'							
L49	N17°23'59"W	58.38'	L99	S67°21'46"E	10.84'							
L50	N46°38'11"E	27.22'	L100	N67°21'46"W	10.85'							



NE 1/4, SW 1/4 SEC. 4,
T.5S., R.65W., SIXTH P.M.

LOT 1
BLOCK 1
PRONGHORN NATURAL AREA AND OPEN
SPACE SUBDIVISION FILING NO. 1
REC. NO. B9063626

SOUTHEAST CORNER OF THE NORTHEAST
1/4 OF THE SOUTHWEST 1/4 SECTION
4,
T.5S., R.65W., SIXTH P.M.
SET 3-1/4" ALUMINUM CAP STAMPED
"AZTEC CONSULTANTS PLS 38691"

MONUMENT SYMBOL LEGEND	
○	SET NO. 5 REBAR WITH 1-1/4" GREEN PLASTIC CAP STAMPED "AZTEC LS 38691"
1	FOUND 2-1/2" ALUMINUM CAP STAMPED "LAND CONSULTANTS PLS 20699"
2	FOUND 1-1/4" YELLOW PLASTIC CAP STAMPED "LS 27609"
◆	FOUND SECTION CORNER AS DESCRIBED HEREON

FOR REVIEW

FOR AND ON BEHALF OF
AZTEC CONSULTANTS, INC

AzTEC CONSULTANTS, INC. 300 East Mineral Ave., Suite 1 Littleton, Colorado 80122 Phone: (303) 713-1898 Fax: (303) 713-1897 www.aztecconsultants.com	FINAL PLAT CITY OF AURORA		DATE OF PREPARATION:	03-25-2020
	15151 E. ALAMEDA PARKWAY AURORA, COLORADO 80012 (303) 739-7000		SCALE:	1"=100'
	AzTec Proj. No.: 23420-07 Drawn By: RBA		SHEET 6 OF 7	

AURORA SEAM SUBDIVISION FILING NO. 1

A RESUBDIVISION OF A PORTION OF LOT 1, BLOCK 1, PRONGHORN NATURAL AREA AND OPEN SPACE SUBDIVISION FILING NO. 1 AND THE SOUTHWEST QUARTER OF THE SOUTHWEST QUARTER LOCATED IN THE WEST HALF OF SECTION 4, TOWNSHIP 5 SOUTH, RANGE 65 WEST OF THE SIXTH PRINCIPAL MERIDIAN,
CITY OF AURORA, COUNTY OF ARAPAHOE, STATE OF COLORADO.

NORTHWEST 1/4 CORNER SECTION 4,
T5S, R65W, 6TH P.M.,
FOUND 3-1/4" ALUMINUM CAP AT
GRADE STAMPED "CHICHESTER RLS 7735"

LOT 1
BLOCK 1
PRONGHORN NATURAL
AREA AND OPEN SPACE
SUBDIVISION FILING NO. 1
REC. NO. B9063626

NW 1/4 SEC. 4,
T.5S., R.65W., SIXTH P.M.

NORTHEAST 1/4 CORNER OF THE
NORTHWEST 1/4 OF THE SOUTHWEST
1/4 SECTION 4,
T5S, R65W, 6TH P.M.,
SET 3-1/4" ALUMINUM CAP STAMPED
"AZTEC CONSULTANTS PLS 38691"

WEST 1/4 CORNER SECTION 4,
T5S, R65W, 6TH P.M.,
FOUND 3-1/4" ALUMINUM CAP AT GRADE
STAMPED "PLS 20699 2007 VIGIL LAND"

UNPLATTED

SE 1/4 SEC. 5,
T.5S., R.65W., SIXTH P.M.

SOUTHWEST CORNER OF THE
NORTHWEST 1/4 OF THE
SOUTHWEST 1/4 SECTION 4,
T5S, R65W, 6TH P.M.,
FOUND 3-1/4" ALUMINUM CAP
STAMPED "CHICHESTER RLS 7735"

N00°00'40"E 2676.02'

N90°00'00"E 895.57'

WEST LINE OF THE NORTHWEST 1/4 SECTION 4
N00°00'40"E 513.40'

WEST LINE OF THE NORTHWEST 1/4 OF THE
SOUTHWEST 1/4 SECTION 4
N00°15'03"E 1308.89'

N88°53'29"E 1320.72'
NORTH LINE OF THE SOUTHWEST 1/4 SECTION 4

EAST LINE OF THE NORTHWEST 1/4 OF THE
SOUTHWEST 1/4 SECTION 4
S00°14'45"W 1312.50'

NE 1/4, SW 1/4 SEC. 4,
T.5S., R.65W., SIXTH P.M.

S00°14'45"W
456.50'

LOT 1
BLOCK 1
PRONGHORN NATURAL AREA AND OPEN
SPACE SUBDIVISION FILING NO. 1
REC. NO. B9063626

SOUTHEAST CORNER OF THE NORTHEAST
1/4 OF THE SOUTHWEST 1/4 SECTION
T.5S., R.65W., 6TH P.M.
SET 3-1/4" ALUMINUM CAP STAMPED
"AZTEC CONSULTANTS PLS 38691"

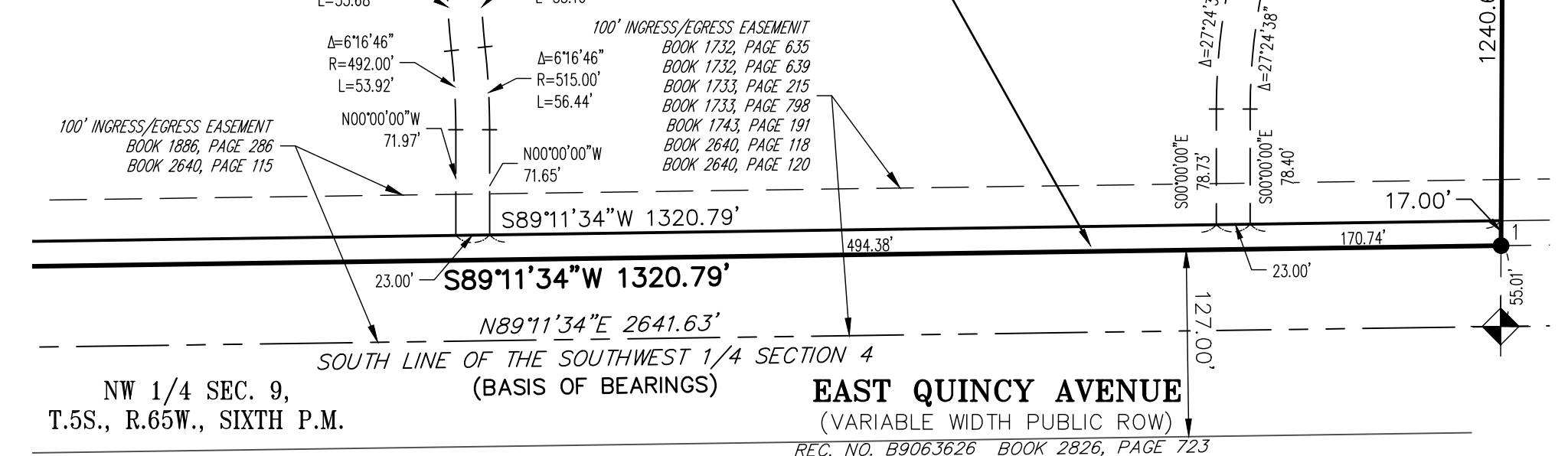
SEE ABOVE RIGHT

SEE BELOW LEFT

LOT 1 BLOCK 1

SW 1/4, SW 1/4 SEC. 4,
T.5S., R.65W., SIXTH P.M.

Dedicated to the city
of Aurora as Street Right-of-Way
22,453 SF
0.515 AC



MONUMENT SYMBOL LEGEND

- SET NO. 5 REBAR WITH 1-1/4" GREEN PLASTIC CAP STAMPED "AZTEC LS 38691"
- FOUND 2-1/2" ALUMINUM CAP STAMPED "LAND CONSULTANTS PLS 20699"
- FOUND 1-1/4" YELLOW PLASTIC CAP STAMPED "LS 27609"
- FOUND SECTION CORNER AS DESCRIBED HEREON

SEE SHEET 6
FOR LINE AND
CURVE
TABLES

FOR REVIEW

FOR AND ON BEHALF OF
AZTEC CONSULTANTS, INC

AzTEC
CONSULTANTS, INC.

300 East Mineral Ave, Suite 1
Littleton, Colorado 80122
Phone: (303) 713-1898
Fax: (303) 713-1897
www.aztecconsultants.com

AzTec Proj. No.: 23420-07 Drawn By: RBA

FINAL PLAT
CITY OF AURORA

15151 E. ALAMEDA PARKWAY
AURORA, COLORADO 80012
(303) 739-7000

DATE OF PREPARATION:	03-25-2020
SCALE:	1"=100'
SHEET 7 OF 7	