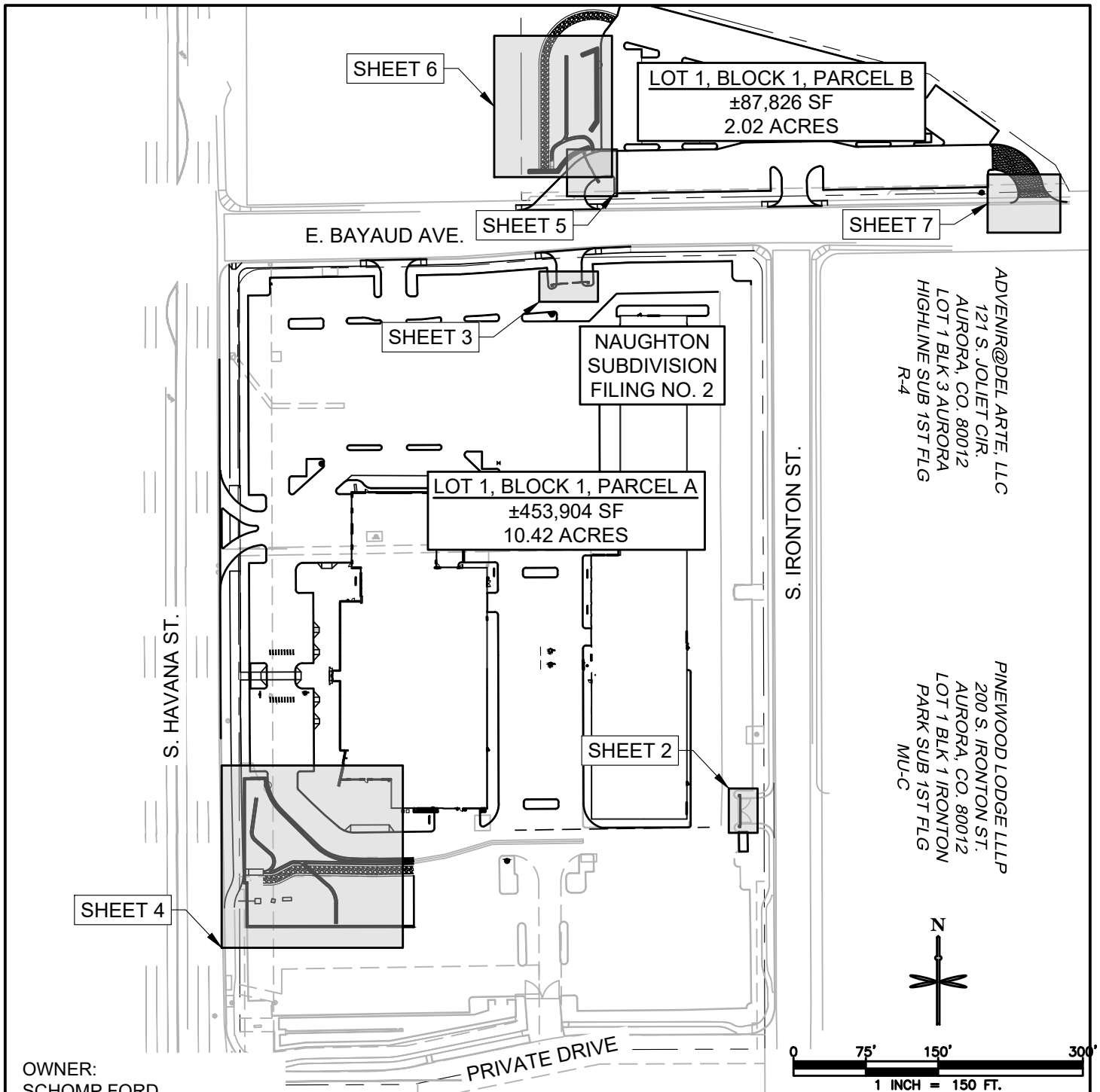


# EXHIBIT A ILLUSTRATION

SHEET 1 OF 8  
RSN: 1540336



OWNER:  
SCHOMP FORD  
150 SOUTH HAVANA STREET  
AURORA, CO 80012

THIS ILLUSTRATION DOES NOT REPRESENT A  
MONUMENTED SURVEY. IT IS INTENDED ONLY  
TO DEPICT THE ATTACHED DESCRIPTION.

**BASIS OF BEARINGS:** BEARINGS ARE BASED ON GRID BEARINGS OF THE  
COLORADO STATE PLAN COORDINATE SYSTEM, CENTRAL ZONE, NORTH  
AMERICAN DATUM 1983. THE BEARING OF THE WEST LINE OF LOT 1, BLOCK 1,  
NAUGHTON SUBDIVISION FILING NO. 2, BETWEEN MONUMENTS AS SHOWN  
HEREON IS N0°11'21"W, WITH ALL BEARINGS CONTAINED HEREON RELATIVE  
THERETO

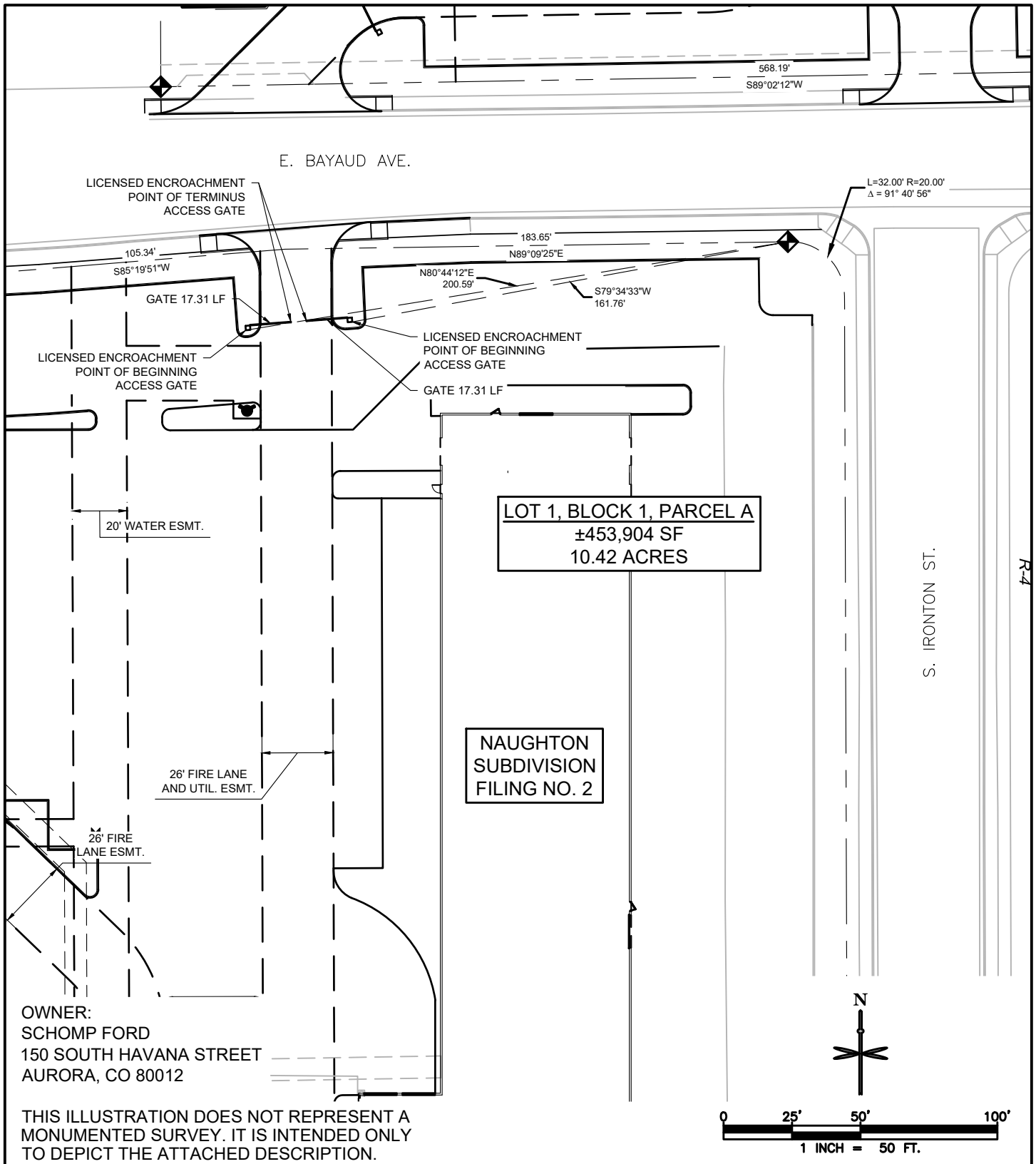
## CITY OF AURORA, COLORADO

A LICENSE FOR ACCESS GATES, DETENTION RETAINING  
WALLS, AND BOLLARDS IN A PARCEL OF LAND SITUATED  
IN PART OF THE SW 1/4 OF SECTION 11, T4S, R67W  
OF THE 6TH P.M.  
CITY OF AURORA, COUNTY OF ARAPAHOE  
STATE OF COLORADO  
NAUGHTON SUBDIVISION FILING NO. 2

DRAWN BY: <b>RAK</b>	SCALE: <b>1"=150'</b>	R-O-W FILE NO.:
CHECKED BY: <b>MG</b>	DATE: <b>05/12/2023</b>	PROJECT NO.: <b>WES00#.01</b>

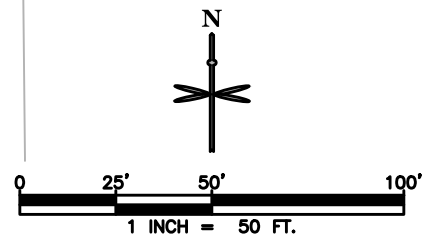
# EXHIBIT A ILLUSTRATION

SHEET 2 OF 8  
RSN: 1540336



OWNER:  
SCHOMP FORD  
150 SOUTH HAVANA STREET  
AURORA, CO 80012

THIS ILLUSTRATION DOES NOT REPRESENT A  
MONUMENTED SURVEY. IT IS INTENDED ONLY  
TO DEPICT THE ATTACHED DESCRIPTION.



CITY OF AURORA, COLORADO

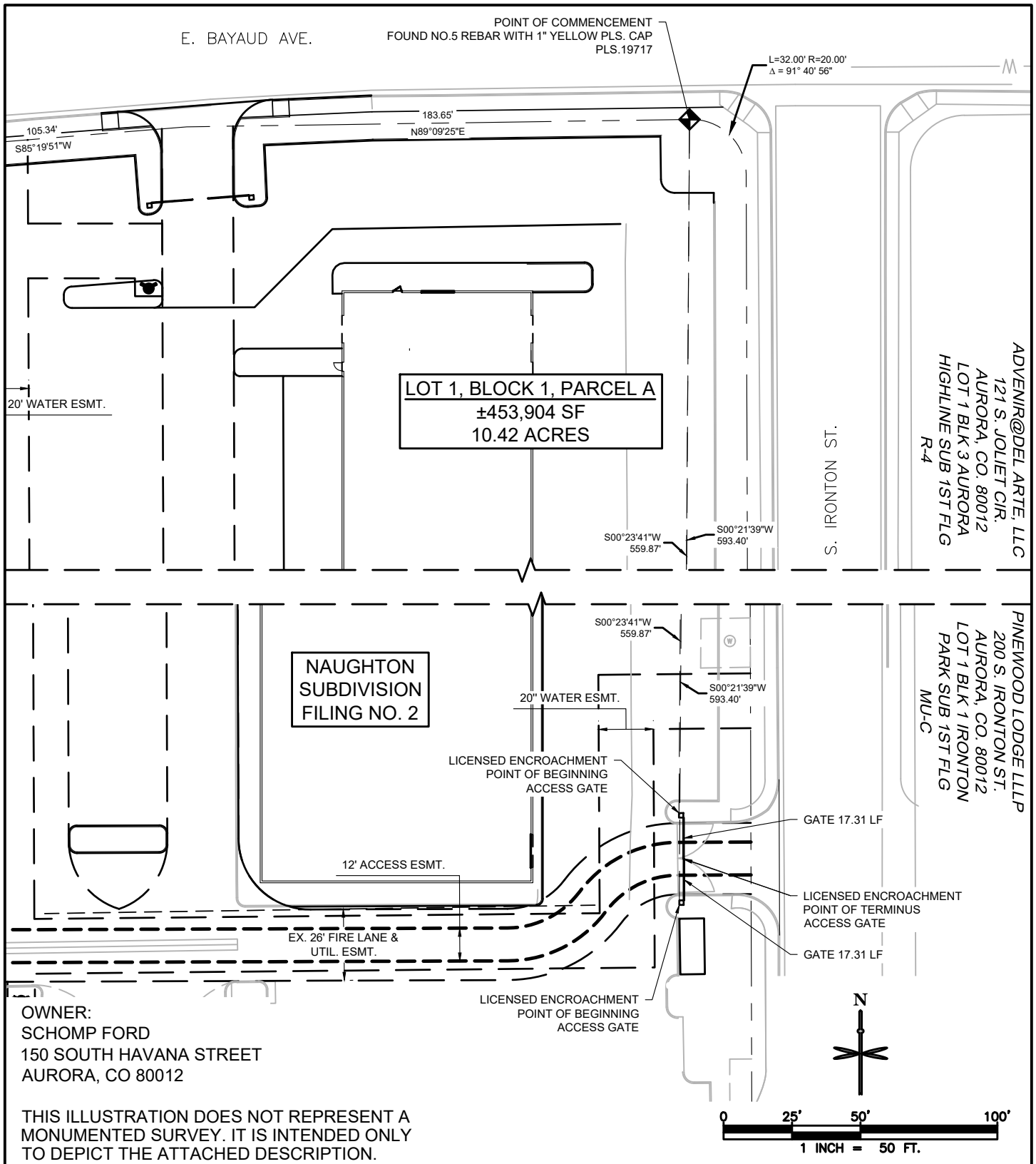
A LICENSE FOR ACCESS GATES IN A PARCEL OF LAND  
SITUATED IN A PARCEL OF LAND SITUATED IN PART OF THE  
SW 1/4 OF SECTION 11, T4S, R67W OF THE 6TH P.M.  
CITY OF AURORA, COUNTY OF ARAPAHOE  
STATE OF COLORADO  
NAUGHTON SUBDIVISION FILING NO. 2

DRAWN BY: <b>RAK</b>	SCALE: <b>1"=50'</b>	R-O-W FILE NO.:
CHECKED BY: <b>MG</b>	DATE: <b>05/12/2023</b>	PROJECT NO.: <b>WES00#.01</b>

# EXHIBIT A ILLUSTRATION

SHEET 3 OF 8

RSN: 1540336



5/12/2023 12:52 P.M. WESNAE ARCHITECTURE CO. AURORA - SCHOMP FORD 08 CAD LICENSE AGREEMENT WESNAE FORD L.A. DWG

## CITY OF AURORA, COLORADO

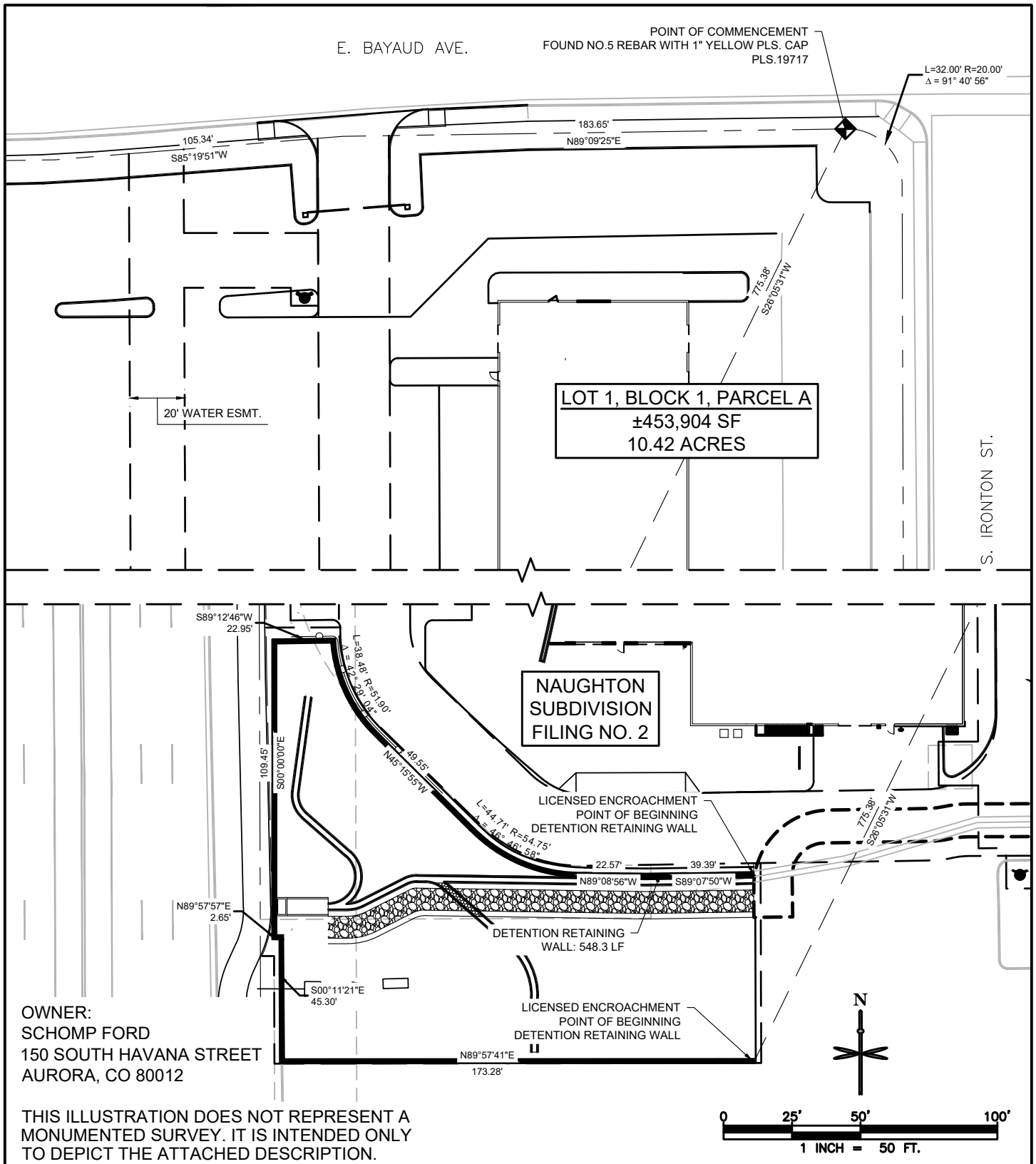
DRAWN BY:	SCALE:	R-O-W FILE NO.:
RAK	1"=50'	
CHECKED BY:	DATE:	PROJECT NO.:
MG	05/12/2023	WES00#.01

A LICENSE FOR ACCESS GATES IN A PARCEL OF LAND SITUATED IN A PARCEL OF LAND SITUATED IN PART OF THE SW 1/4 OF SECTION 11, T4S, R67W OF THE 6TH P.M. CITY OF AURORA, COUNTY OF ARAPAHOE STATE OF COLORADO NAUGHTON SUBDIVISION FILING NO. 2

# EXHIBIT A ILLUSTRATION

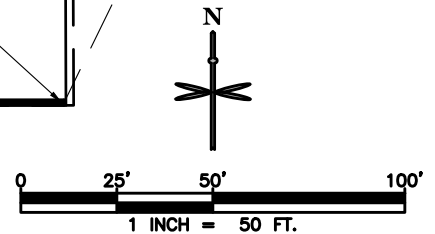
SHEET 4 OF 8

RSN: 1540336



OWNER:  
SCHOMP FORD  
150 SOUTH HAVANA STREET  
AURORA, CO 80012

THIS ILLUSTRATION DOES NOT REPRESENT A  
MONUMENTED SURVEY. IT IS INTENDED ONLY  
TO DEPICT THE ATTACHED DESCRIPTION.



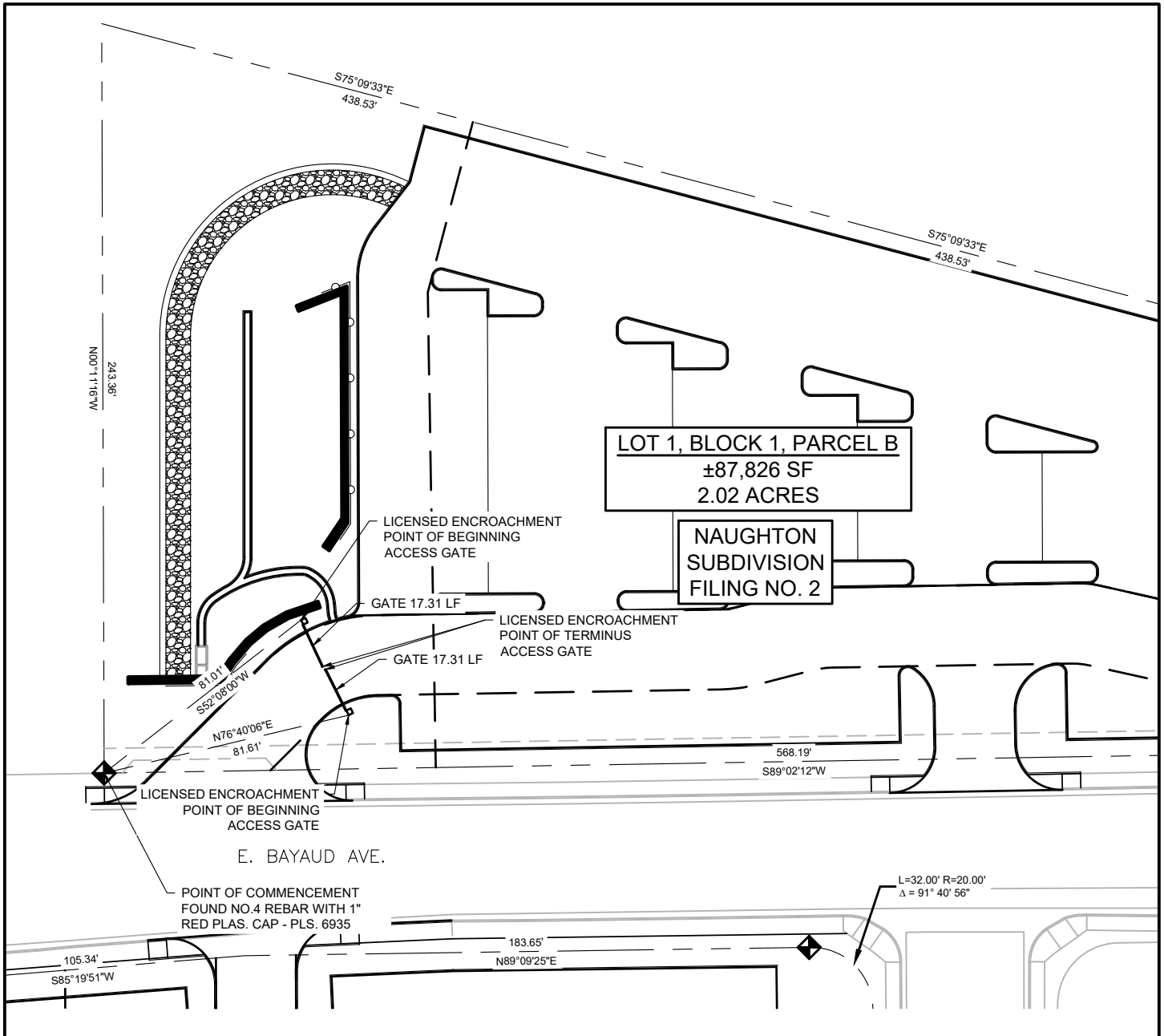
## CITY OF AURORA, COLORADO

A LICENSE FOR DETENTION RETAINING WALL IN A PARCEL  
OF LAND SITUATED IN A PARCEL OF LAND SITUATED IN  
PART OF THE SW 1/4 OF SECTION 11, T4S, R67W OF  
THE 6TH P.M.  
CITY OF AURORA, COUNTY OF ARAPAHOE  
STATE OF COLORADO  
NAUGHTON SUBDIVISION FILING NO. 2

DRAWN BY:	SCALE:	R-O-W FILE NO.:
RAK	1"=50'	
CHECKED BY:	DATE:	PROJECT NO.:
MG	05/12/2023	WES00#.01

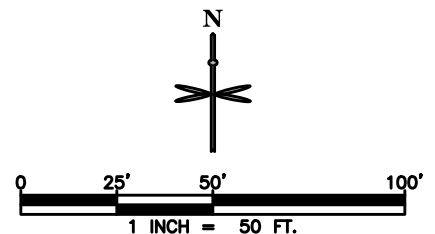
# EXHIBIT A ILLUSTRATION

SHEET 5 OF 8  
RSN: 1540336



OWNER:  
SCHOMP FORD  
150 SOUTH HAVANA STREET  
AURORA, CO 80012

THIS ILLUSTRATION DOES NOT REPRESENT A  
MONUMENTED SURVEY. IT IS INTENDED ONLY  
TO DEPICT THE ATTACHED DESCRIPTION.



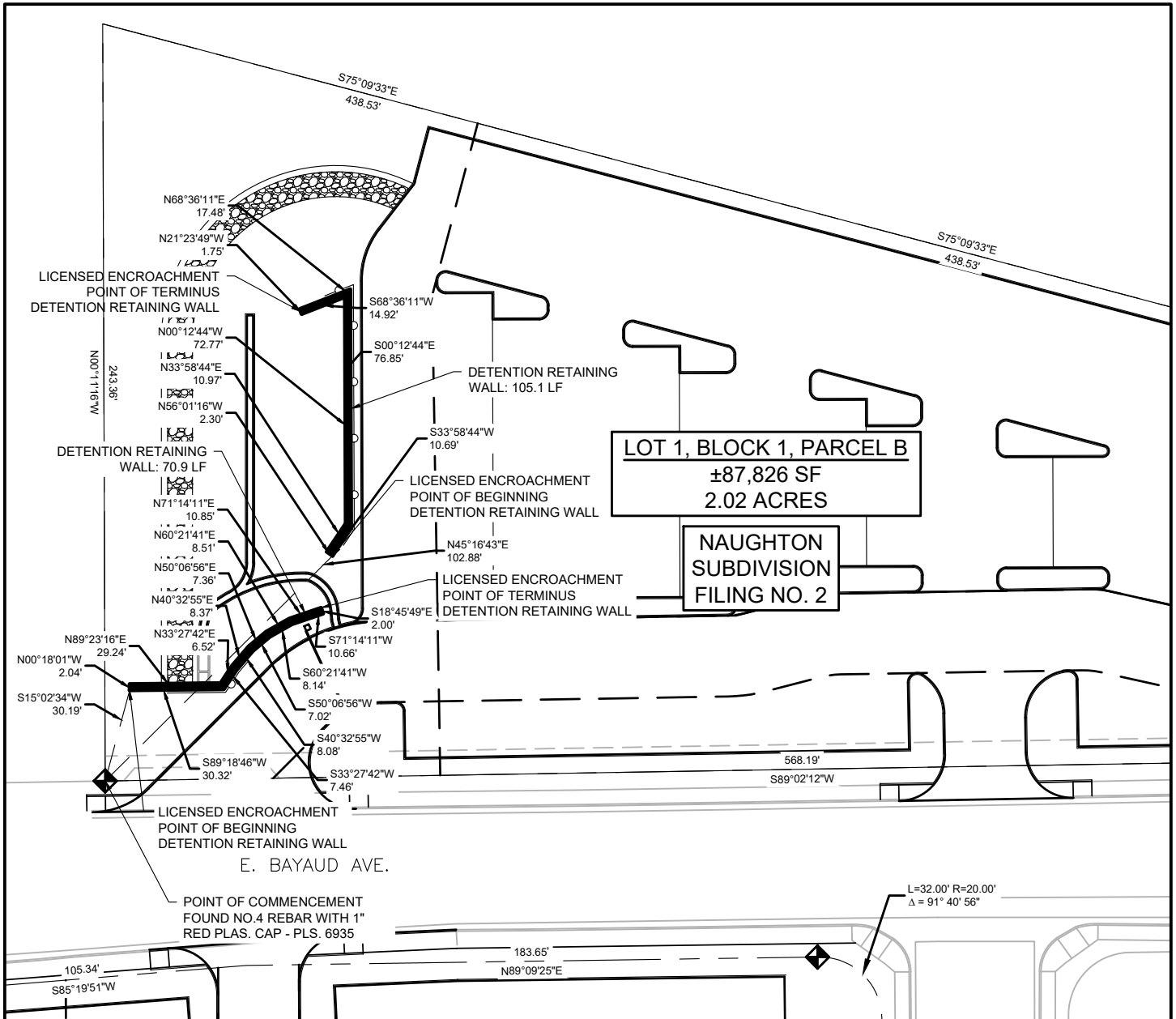
**CITY OF AURORA, COLORADO**

A LICENSE FOR ACCESS GATES IN A PARCEL OF LAND  
SITUATED IN A PARCEL OF LAND SITUATED IN PART OF THE  
SW 1/4 OF SECTION 11, T4S, R67W OF THE 6TH P.M.  
CITY OF AURORA, COUNTY OF ARAPAHOE  
STATE OF COLORADO  
NAUGHTON SUBDIVISION FILING NO. 2

DRAWN BY: <b>RAK</b>	SCALE: <b>1"=50'</b>	R-O-W FILE NO.:
CHECKED BY: <b>MG</b>	DATE: <b>05/12/2023</b>	PROJECT NO.: <b>WES00#.01</b>

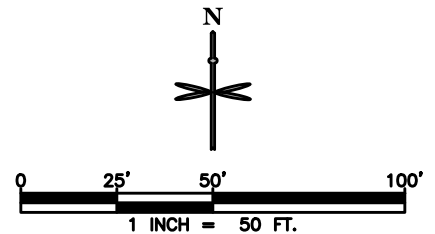
# EXHIBIT A ILLUSTRATION

SHEET 6 OF 8  
RSN: 1540336



OWNER:  
SCHOMP FORD  
150 SOUTH HAVANA STREET  
AURORA, CO 80012

THIS ILLUSTRATION DOES NOT REPRESENT A  
MONUMENTED SURVEY. IT IS INTENDED ONLY  
TO DEPICT THE ATTACHED DESCRIPTION.



CITY OF AURORA, COLORADO

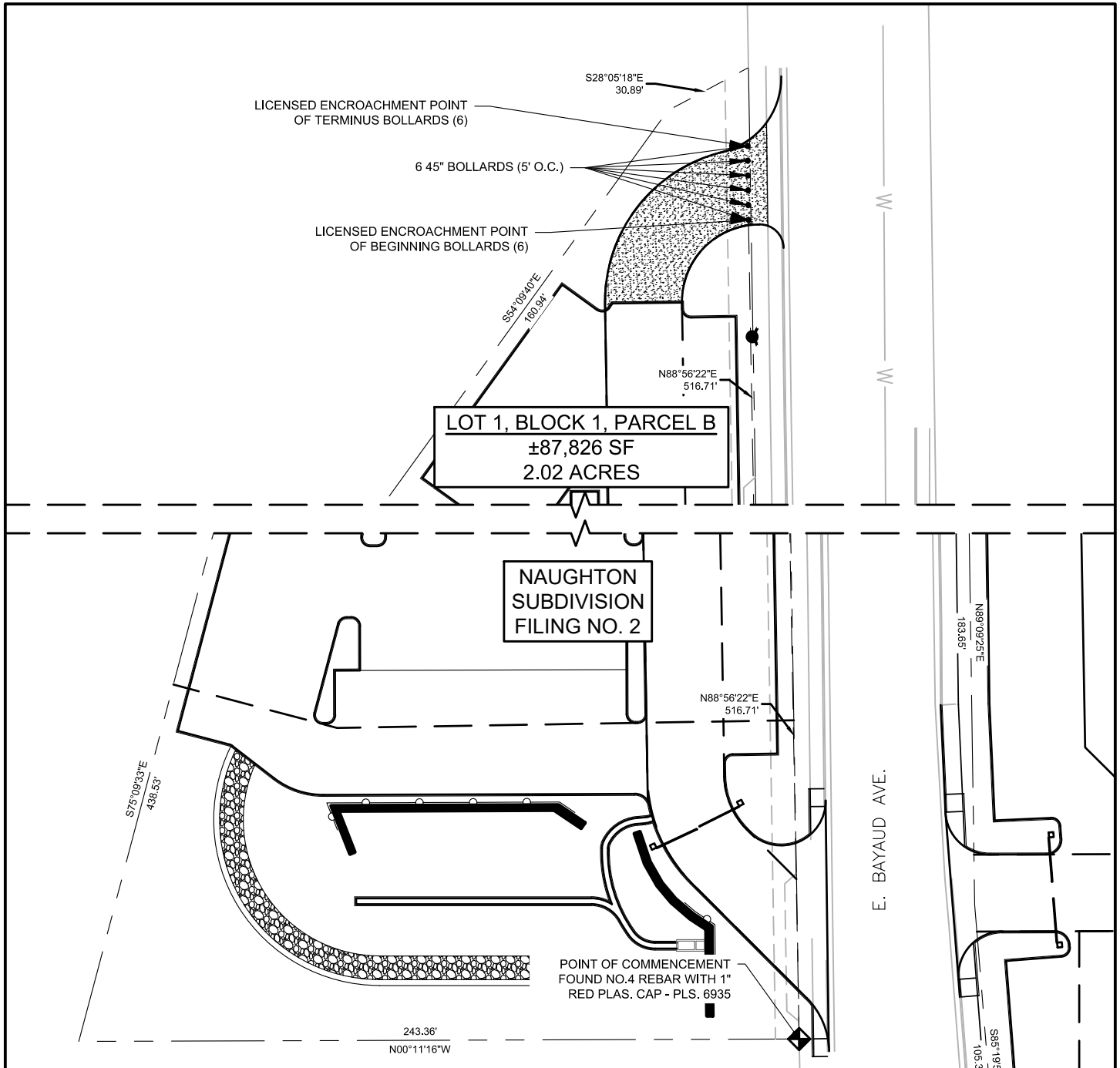
A LICENSE FOR DETENTION RETAINING WALL IN A PARCEL  
OF LAND SITUATED IN A PARCEL OF LAND SITUATED IN  
PART OF THE SW 1/4 OF SECTION 11, T4S, R67W OF  
THE 6TH P.M.  
CITY OF AURORA, COUNTY OF ARAPAHOE  
STATE OF COLORADO  
NAUGHTON SUBDIVISION FILING NO. 2

DRAWN BY: <b>RAK</b>	SCALE: <b>1"=50'</b>	R-O-W FILE NO.:
CHECKED BY: <b>MG</b>	DATE: <b>05/12/2023</b>	PROJECT NO.: <b>WES00#.01</b>

5/12/2023 12:52 P.M. WESNAE ARCHITECTURE CO. AURORA - SCHOMP FORD 08 CAD LICENSE AGREEMENT WESNAE FORD L.A. DWG

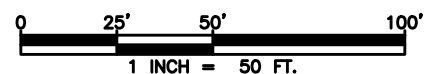
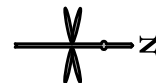
# EXHIBIT A ILLUSTRATION

SHEET 7 OF 8  
RSN: 1540336



OWNER:  
SCHOMP FORD  
150 SOUTH HAVANA STREET  
AURORA, CO 80012

THIS ILLUSTRATION DOES NOT REPRESENT A  
MONUMENTED SURVEY. IT IS INTENDED ONLY  
TO DEPICT THE ATTACHED DESCRIPTION.



**CITY OF AURORA, COLORADO**

A LICENSE FOR REMOVABLE 45" BOLLARDS IN A PARCEL  
OF LAND SITUATED IN PART OF THE SW 1/4 OF SECTION  
11, T4S, R67W OF THE 6TH P.M.  
CITY OF AURORA, COUNTY OF ARAPAHOE  
STATE OF COLORADO  
NAUGHTON SUBDIVISION FILING NO. 2

DRAWN BY:	SCALE:	R-O-W FILE NO.:
RAK	1"=50'	
CHECKED BY:	DATE:	PROJECT NO.:
MG	05/12/2023	WES00#.01

**SHEET 8 OF 8**  
**RSN: 1540336**



OWNER:  
SCHOMP FORD  
150 SOUTH HAVANA STREET  
AURORA, CO 80012

THIS ILLUSTRATION DOES NOT REPRESENT A  
MONUMENTED SURVEY. IT IS INTENDED ONLY  
TO DEPICT THE ATTACHED DESCRIPTION.

CITY OF AURORA, COLORADO

DETAILS SHOWING DETENTION RETAINING WALL IN A  
PARCEL OF LAND SITUATED IN PART OF THE SW 1/4 OF  
SECTION 11, T4S, R67W OF THE 6TH P.M.  
CITY OF AURORA, COUNTY OF ARAPAHOE  
STATE OF COLORADO  
NAUGHTON SUBDIVISION FILING NO. 2

DRAWN BY: <b>RAK</b>	SCALE: <b>1"=50'</b>	R-O-W FILE NO.:
CHECKED BY: <b>MG</b>	DATE: <b>05/12/2023</b>	PROJECT NO.: <b>WES00#.01</b>