

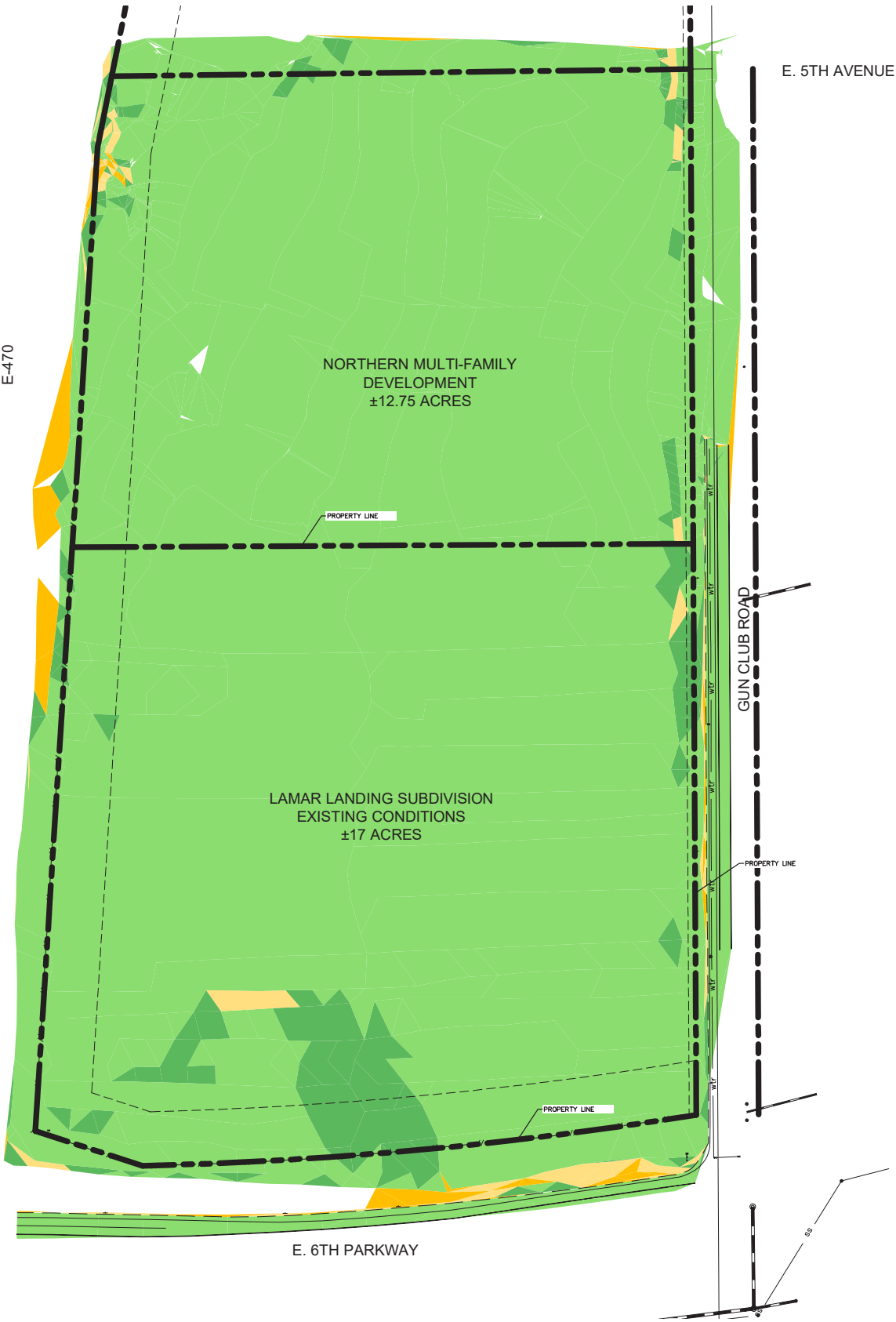
LEGEND

- PROPERTY BOUNDARY
- EXISTING TOPOGRAPHY (1' CONTOUR INTERVAL)
- ★ HIGH POINT
- RIDGE LINE
- ↗ VIEW CORRIDOR



Note: The Project Site is located within the Airport Influence Area of the Buckley Air Force Base.

1st Submittal: July 21, 2020  
2nd Submittal: September 25, 2020  
3rd Submittal: January 12, 2021  
4th Submittal: March 4, 2021



Slopes Table				
Number	Minimum Slope	Maximum Slope	Area	Color
1	0.00%	5.00%	1433357.71	
2	5.00%	8.00%	76417.31	
3	8.00%	12.00%	16555.33	
4	12.00%	25.00%	19524.93	