

METAL ROOFING:



A1



A2



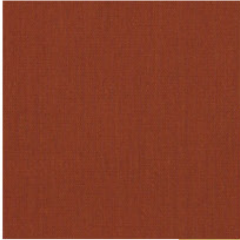
A3



ARCHITECTURAL STONE:

- A1 GRAPHITE
- A2 MONTECITO
- A3 LIMESTONE

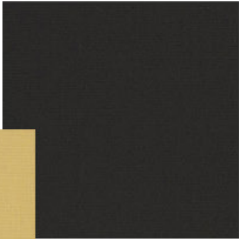
B1



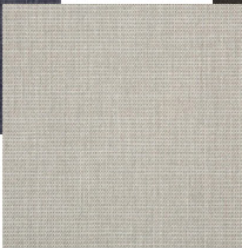
B2



B3



B4



B5



B6

SHADES:

- B1 TRESCO CLAY
- B2 WHEAT
- B3 SLATE
- B4 SPA
- B5 ALLOY DUNE
- B6 ALLOY SILVER

STONE VENEER-

- C1 BIRCH
- C2 BEACH PEBBLE
- C3 OCEAN FLOOR



C1



C2



C3

Note: Imagery is included to explore architectural materials & themes only and is not intended to depict an actual proposal.



SOUTH AURORA PROPERTY INVESTORS, LLC.

**EXHIBIT D:
POMEROY COMMERCIAL
MATERIALS BOARD**

ISSUE DATE: 9/15/17		PROJECT #: 216133	
DATE	REVISION COMMENTS		
5/3/18	2nd Submittal		
8/3/18	3rd Submittal		

SHEET NO.

1

1 OF 2