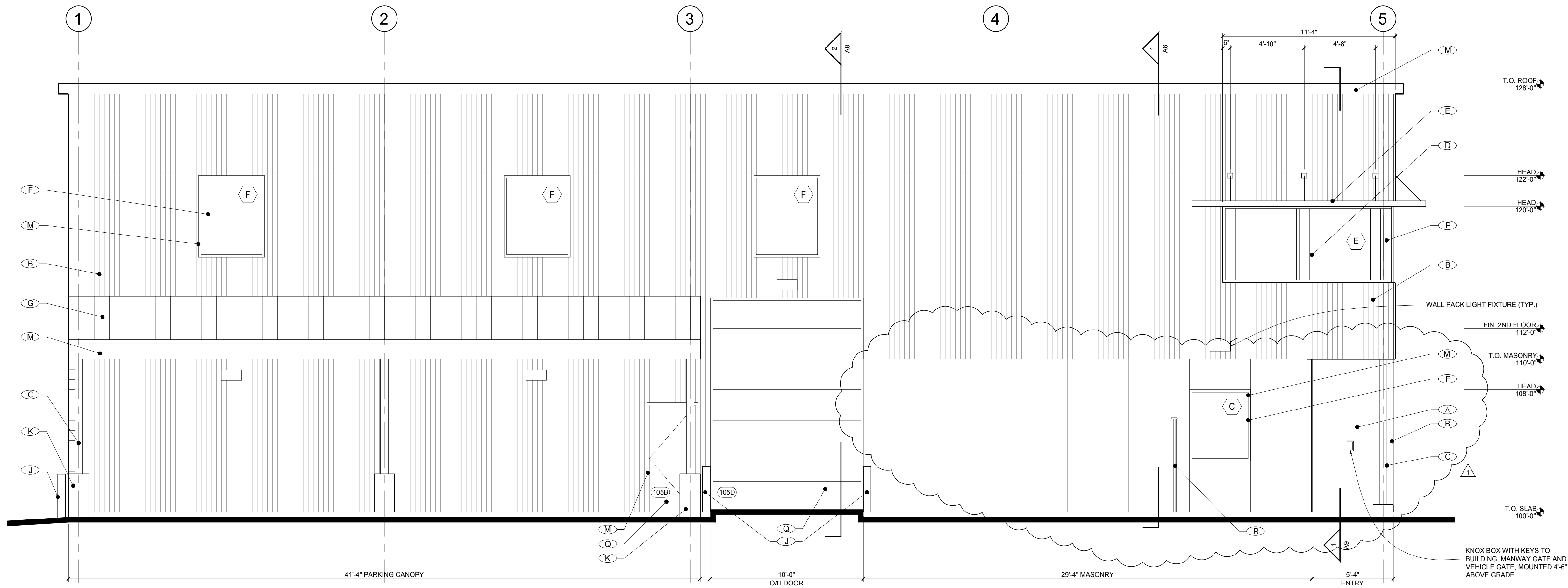
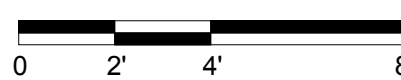


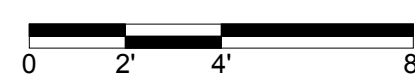
1 NORTH ELEVATION

1/4" = 1'-0"

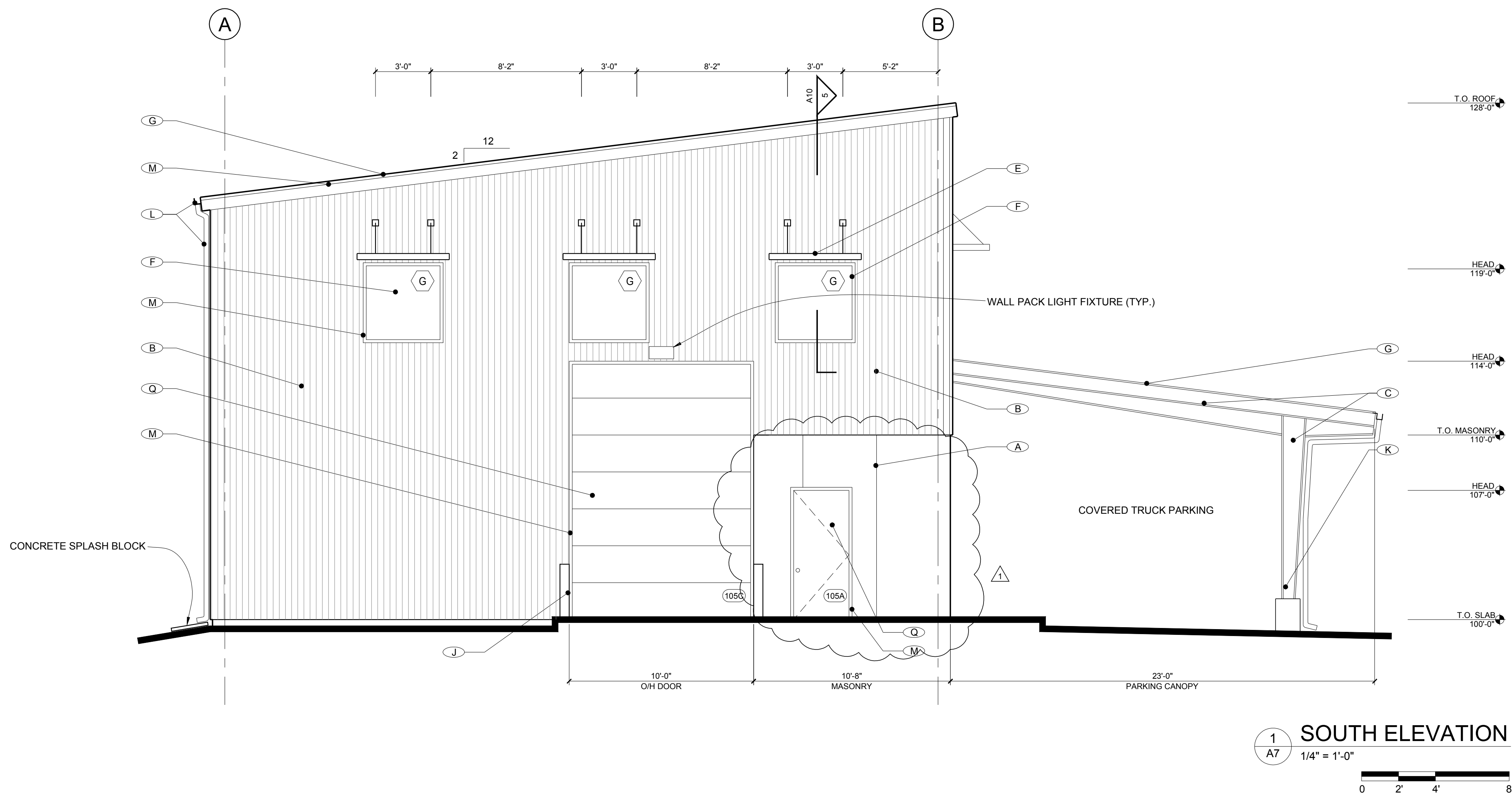


2 EAST ELEVATION

1/4" = 1'-0"



COPYRIGHT©2015 ALL RIGHTS RESERVED PAPPAS ARCHITECTURE + DESIGN LLC. ALL DESIGN DRAWINGS AND WRITTEN MATERIAL APPEARING HEREIN CONSTITUTE THE ORIGINAL AND UNPUBLISHED WORK OF THE ARCHITECT AND MAY NOT BE DUPLICATED, USED OR DISCLOSED IN ANY FORM WITHOUT THE PRIOR WRITTEN CONSENT OF THE ARCHITECT. THE ARCHITECT HOLDS EXCLUSIVE RIGHTS TO THE INFORMATION CONTAINED HEREIN.



MATERIAL LEGEND			
(A)	MATERIAL: SMOOTH FACE GRANITE PANELS COURSING: VARIES COLOR: VARIES	(J)	MATERIAL: PAINTED STEEL BOLLARD FINISH: SHERWIN WILLIAMS KEM-400 ENAMEL (SATIN) COLOR: TBD
(B)	MATERIAL: PRE-FINISHED METAL SIDING PROFILE: METAL SALES T10A COLOR: TBD	(K)	MATERIAL: EXPOSED CONCRETE FOUNDATION FINISH: CLEAR SEAL
(C)	MATERIAL: PAINTED STRUCTURAL STEEL MEMBER FINISH: SHERWIN WILLIAMS KEM-400 ENAMEL (SATIN) COLOR: TBD	(L)	MATERIAL: PRE-FINISHED METAL GUTTER / DOWNSPOUT MFR: METAL SALES COLOR: TBD
(D)	MATERIAL: ALUMINUM STOREFRONT SYSTEM FINISH: ANODIZED ALUMINUM COLOR: VISTAWALL FG-3000, CLEAR	(M)	MATERIAL: PRE-FINISHED METAL FASCIA / FLASHING / TRIM MFR: METAL SALES COLOR: TBD
(E)	MATERIAL: ALUMINUM SUNSHADE SYSTEM FINISH: ANODIZED ALUMINUM COLOR: CLEAR	(N)	MATERIAL: PRE-FINISHED METAL FASCIA / FLASHING / TRIM MFR: METAL SALES COLOR: TBD
(F)	MATERIAL: INSULATED WINDOW FINISH: ALUMINUM COLOR: CLEAR	(P)	MATERIAL: ALUMINUM BRAKE METAL FINISH: ANODIZED ALUMINUM COLOR: CLEAR
(G)	MATERIAL: PRE-FINISHED METAL STANDING SEAM ROOF PROFILE: METAL SALES VERTICAL SEAM (12", FLAT) COLOR: TBD	(Q)	MATERIAL: PAINTED METAL DOOR FINISH: SHERWIN WILLIAMS KEM-400 ENAMEL (SATIN) COLOR: TBD
(H)	MATERIAL: FIBER CEMENT SOFFIT PANELS FINISH: SHERWIN WILLIAMS EXTERIOR SATIN COLOR: TBD	(R)	MATERIAL: CEDAR FENCE - STAIN FINISH: SHERWIN WILLIAMS SEMI-TRANSPARENT COLOR: TBD

NOTE: T.O. FLOOR SLAB ELEVATION 100'-0" BASED UPON SURVEY ELEVATION OF 5438.50'

