

Frame & Fabric Colors

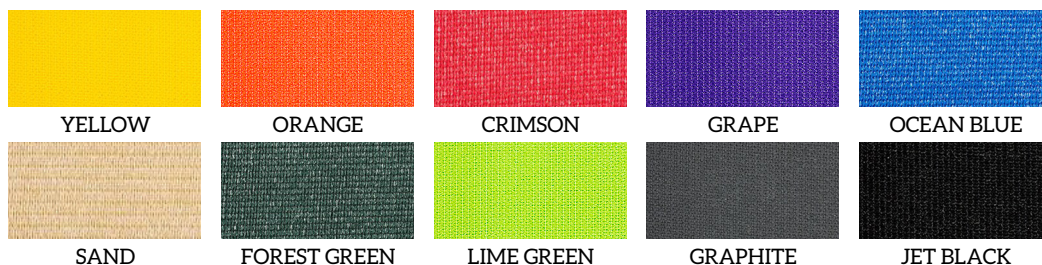
Super Durable Frame Color Options



Super Durable & Anti Graffiti Frame Color Options



Fabric Shelter Color Options



SolaMesh™, an industry leading performance fabric for shade sails, shade and fabric structures, awnings and other applications, is an exclusive new offering. Made from highly stable and color fast HDPE monofilament and tape. It provides best-in-class strength, value, and longevity.

Roof Panel Colors & Options

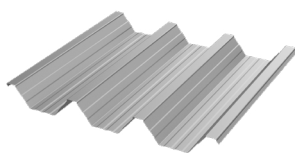
24" Aluminum Structural "W" Panel

Features:

Structural roof panel designed to limit the amount rafters & purlins per structure.

Best overall value when comparing cost & strength.

Gutters are included for water erosion management.

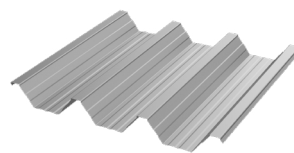


Coverage Width - 24"
Minimum Slope - 1/2:12
Thickness - .038" & .024" (560 Anodized Only)
Finish - Stucco Embossed
Coatings - DuraCoat XT40 Ceranamel
Rib Spacing - 8" on center
Rib Height - 2-1/2"

Compatible with all model shelters except for Pergola

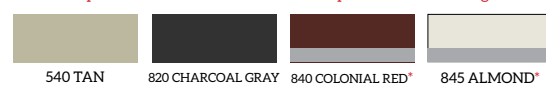


24" Galvalume® 24 Gauge Structural "W" Panel



Coverage Width - 24"
Minimum Slope - 1/2:12
Gauge - 24
Finish - Smooth
Coatings - Siliconized Polyester
Rib Spacing - 8" on center
Rib Height - 2-1/2"

Compatible with all model shelters except for Colonial & Pergola



Colors containing asterisks have a wash coat bottom side

36" Galvalume® 26 Gauge "R" Panel

Features:

Flush fit for a cleaner, sleeker appearance.

Designed to deter bird roosting.

Edge trim is included for a simple & flawless finish.

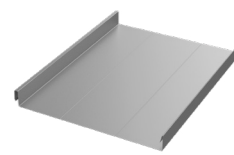


Coverage Width - 36"
Minimum Slope - 1/2:12
Gauge - 26
Finish - Smooth
Coatings - Siliconized Polyester
Rib Spacing - 12" on center
Rib Height - 1-1/4"

Compatible with all model shelters except for Meramec, Colonial & Pergola

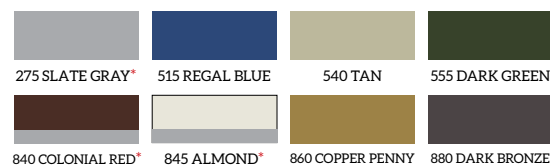


18" Galvalume® 24 Gauge Standing Seam Panel



Coverage Width - 18"
Minimum Slope - 1/2:12
Gauge - 24
Finish - Smooth
Coatings - Siliconized Polyester
Rib Spacing - N/A
Rib Height - 1-3/4"

Compatible with all model shelters except for Meramec, Colonial, & Pergola



Colors containing asterisks have a wash coat bottom side

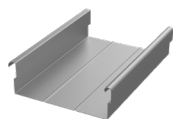
8" Aluminum Structural Flat Panel

Features:

Flush fit for a cleaner, sleeker appearance.

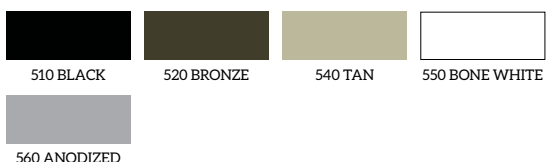
Designed to deter bird roosting.

Gutters are included for water erosion management.

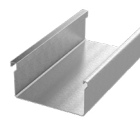


Coverage Width - 8"
Minimum Slope - 1/2:12
Thickness - .024", .032", & .040"
Finish - Smooth Matte Finish
Coatings - DuraCoat XT40 Ceranamel
Rib Spacing - N/A
Rib Height - 2-5/8"

Compatible with all model shelters except for Meramec & Pergola



6" Aluminum Extruded Flat Panel



Coverage Width - 6"
Minimum Slope - 1/2:12
Thickness - .065"
Finish - Smooth Gloss Finish
Coatings - Super Durable Polyester
Rib Spacing - N/A
Rib Height - 2-7/8"

Compatible only with Walkways & Entry Covers

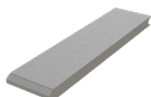


Powder coat finish available in all frame colors.
Full RAL color palette available at additional cost.

Features:

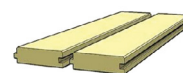
Insulated panels for noise and temperature control.

Flush fit for a cleaner, sleeker appearance.



3" thick sandwich panel
White stucco finish with foam core

Compatible with all model shelters except for Cherokee, Pergola, Walkways & Entry Covers



Tongue and Groove Wood

1) Southern Yellow Pine
2) Western Cedar

Utilized as sub roofing for shelters using the 18" standing seam panels or shingles.