



WATER DELIVERY METHOD

LONE TREE NORTH

Lone Tree North Water Delivery Method

Fresh water used for completion operations at the Lone Tree North location will be transported by a temporary water line ("Layflat").

Layflat description: Temporary, above-ground water supply line, typically 12" in diameter and typically made of synthetic rubber or similar "hose" material. They are used for the transfer of water from an identified water source to support company's hydraulic fracturing operations.

"Facilities" associated with use of Layflat lines include the following:

- In-line pumps
- Spools
- Secondary containment equipment
- Ramps

Equipment used for installation may include pick-up trucks, flatbed trailers, skid steer, and skid steer mounted reel winder.

Layflat lines are laid on the surface, at grade and do not require excavation. They do not require staking in order to secure them from movement and are placed at least 10' from the edge of the roadway.

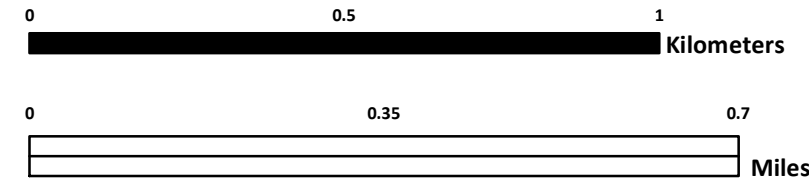
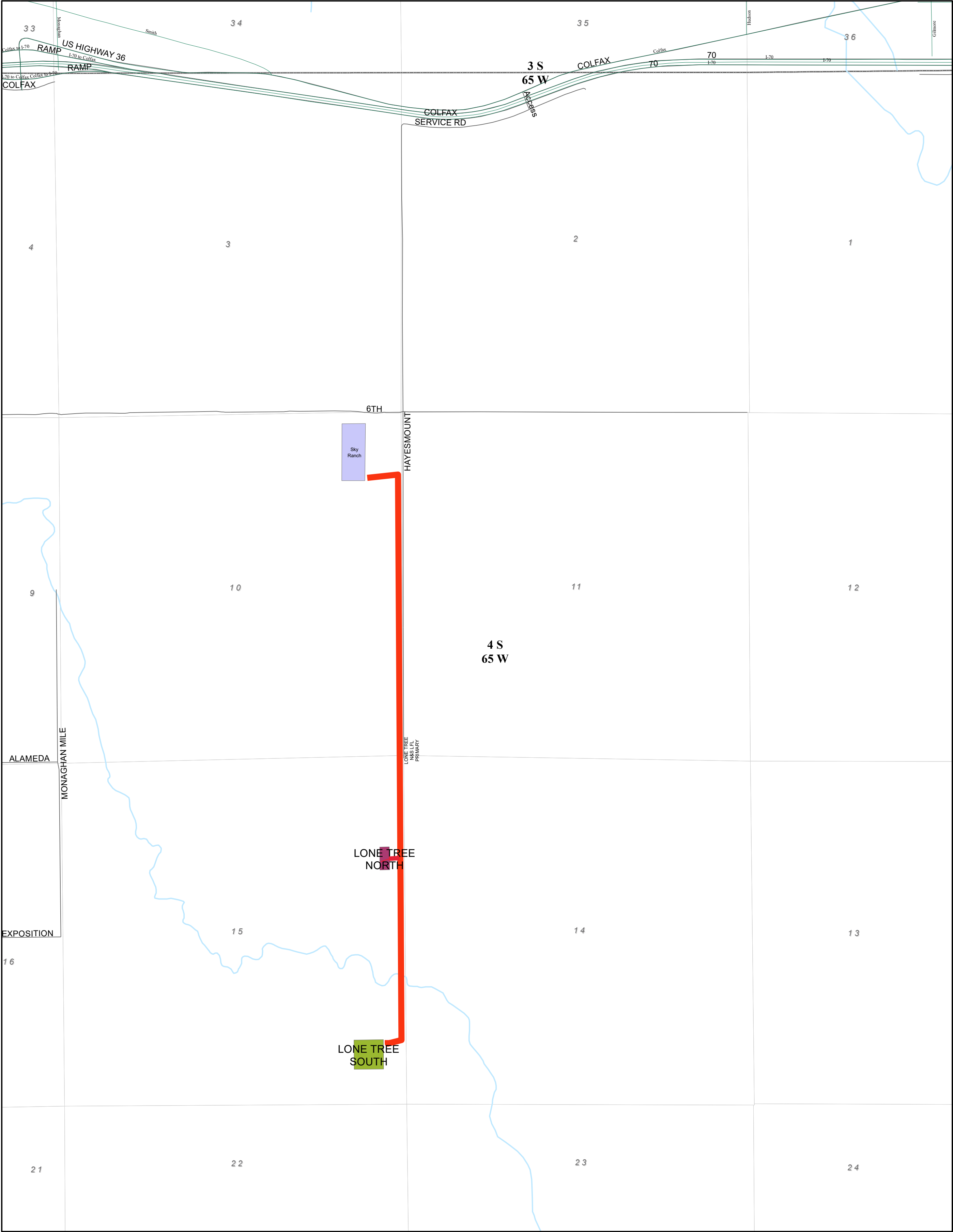
Deployment and retrieval of a Layflat line: a truck carrying spools of hose follows along-side a skid steer tractor. The skid steer carries and straddles the spool of Layflat line and releases the hose by the reel rolling forward. Victaulic couplings are used to assemble segments of Layflat hose. The process of retrieving the Layflat hose involves the same equipment and process in reverse (reel rolling backward). When Layflat lines run alongside road right of way, traffic control plans are implemented to manage and mandate safety procedures.

Route Description

The scope of this fresh water transfer will originate from Sky Ranch Pond located in Section 10, T4S, R65W, Arapahoe County, Colorado. The agreements listed below have been secured.

Lone Tree North and South Primary

- From Sky Ranch: South on Hayesmount Rd. via private landowner agreement
- Private landowner agreement to enter pad location



Legend

SL_CDA_OW

LONE TREE NORTH

LONE TREE SOUTH

Lone_Tree_North_South_Primary



ConocoPhillips

LONE TREE NORTH & SOUTH
LAY FLAT LINE ROUTE

Scale: 1:12,000

Author: Leon Hulon

Date Saved: 8/21/2019