



August 30, 2018

Craig Perl  
City of Aurora  
15151 E Alameda Parkway, Suite 3200  
Aurora, CO 80012

**RE: Preliminary Drainage Letter for  
Kings Point East Lift Station at Kings Point Filing 2  
Aurora, Colorado**

Mr. Perl:

This preliminary drainage letter is being prepared in accordance with Section 2.33 of the City of Aurora, Storm Drainage Design and Technical Criteria and the Pre-Application Meeting notes dated May 18, 2018. The proposed Kings Point East Lift Station is located with Tract M of the proposed Kings Point Subdivision Filing No. 2. Tract M is located south of East Long Avenue and east of Antelope Creek. The proposed lift station will be dedicated to the City of Aurora for use as a public facility.

The project area has been previously studied by the approved Master Drainage Report Amendment No. 1 by CORE Consultants, Inc dated April 21, 2017. The approved drainage patterns and impervious will not be altered from the approved Master Drainage Report. The lift station site is located within basin D7 which drains via overland flow to Antelope Creek prior to crossing Long Ave. The proposed lift station grading maintains the approved drainage pattern including maintaining the existing roadside swale within Long Ave.

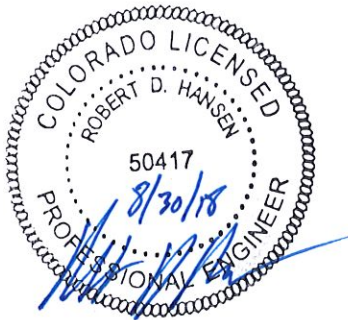
A Final Drainage report for Kings Point Filing No. 2 is currently in the review process with the City of Aurora. As the design as progressed it was determined to remove Pond F from the final design. Pond F was intended to outlet to the roadside swale within Long Ave upstream of the lift station site. This removal further reduces the impact to the existing roadside swale and the lift station site. Generally, runoff that was directed to Pond F has been re-routed to Pond C. Please refer to the Final Drainage report for additional information regarding the removal of Pond F.

An exhibit showing the pertinent portions from the Master Drainage Report has been provided following this letter. The proposed lift station will not alter the approved drainage patterns and impervious from the approved Master Drainage Report.



If you have any questions, concerns, or require additional information, please feel free to contact me directly at 303.703.5986 or at [hansen@corecivil.com](mailto:hansen@corecivil.com).

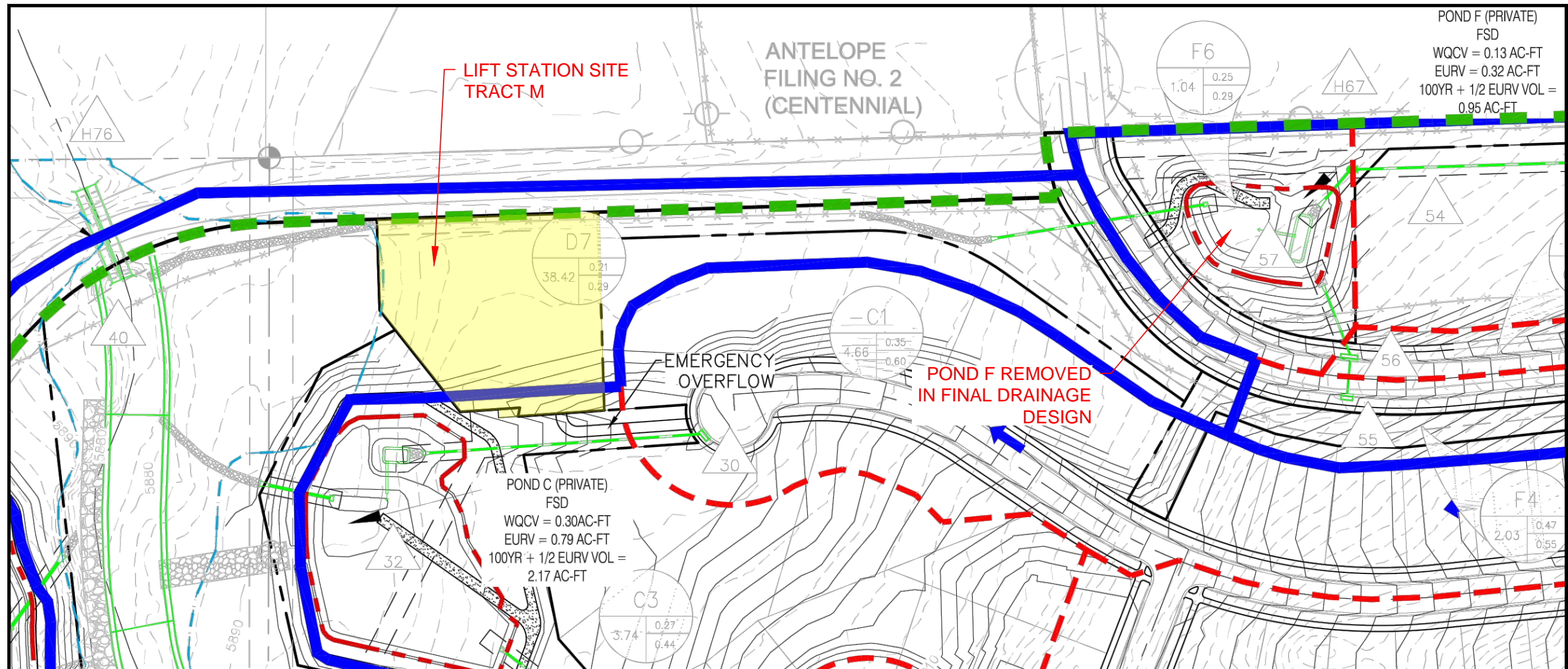
Sincerely,  
**CORE Consultants, Inc.**



Robert D. Hansen, PE, CFM  
Project Manager

Encl.





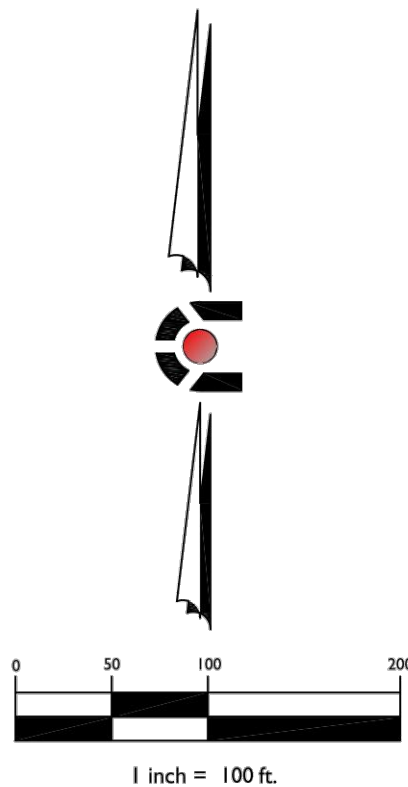
**KINGS POINT FILING 2**  
**AURORA, COLORADO**

**KINGS POINT EAST LIFT STATION**  
**DRAINAGE EXHIBIT**

Street	De- sign Pt.	Direct Runoff							Total Runoff				Street		Pipe Swale			Travel Time			Remarks
		Area De- sign (ac)	Area (ac)	Runoff Coeff. (C)	T <sub>c</sub> (min)	C*A (ac)	I (in/hr)	Q (cfs)	T <sub>c</sub> (min)	C*A (ac)	I (in/hr)	Q (cfs)	S (%)	Q (cfs)	Q Design (cfs)	S (%)	Pipe Size (in)	L (ft)	V (fps)	T <sub>t</sub> (min)	
(1)	(2)	(3)	(4)	(5)	(6)	(7)	(8)	(9)	(10)	(11)	(12)	(13)	(14)	(15)	(16)	(17)	(18)	(19)	(20)	(21)	
	40	D7	38.42	0.29	47.7	11.33	3.2	35.7	47.7	118.91	3.2	374.6						Design Points:			7C, 29, 32, 33 36, 39, 57

Contributing Basins & Design Points	Design Points	Contributing Area (acres)	Q <sub>2</sub> (cfs)	Q <sub>100</sub> (cfs)
HB2	H79	45.6	27.1	123.8
M5.3	H80	1.1	1.7	4.4
H79,H80,D1A	33	49.9	29.2	131.3
M5.1	81	1.4	3.2	8.6
OS4,81	34A	6.4	5.0	14.6
D4,34A	34B	19.2	10.6	34.1
D3	35A	1.2	2.4	6.9
D2,34B,35A	35B	25.0	13.7	43.7
D1B	35C	6.4	3.0	9.9
35B, 35C	36	31.4	15.9	51.1
D5	37	3.9	4.1	16.5
D6	38	1.1	1.2	4.8
37,38	39	5.0	5.3	21.2
*D7,7C,29,32,33,36,39,57	40	279.1	268.8	374.6

ALL ITEMS HAVE BEEN REFERENCED FROM THE APPROVED  
MASTER DRAINAGE REPORT FOR KINGS POINT FILING 2  
AMENDMENT NO. 1 BY CORE CONSULTANTS DATED APRIL 17, 2017



DATE: 08/30/18  
DESIGNED BY: RDH  
DRAWN BY: RDH  
CHECKED BY: RDH

JOB NO.  
14-030

SHEET  
1 OF 1