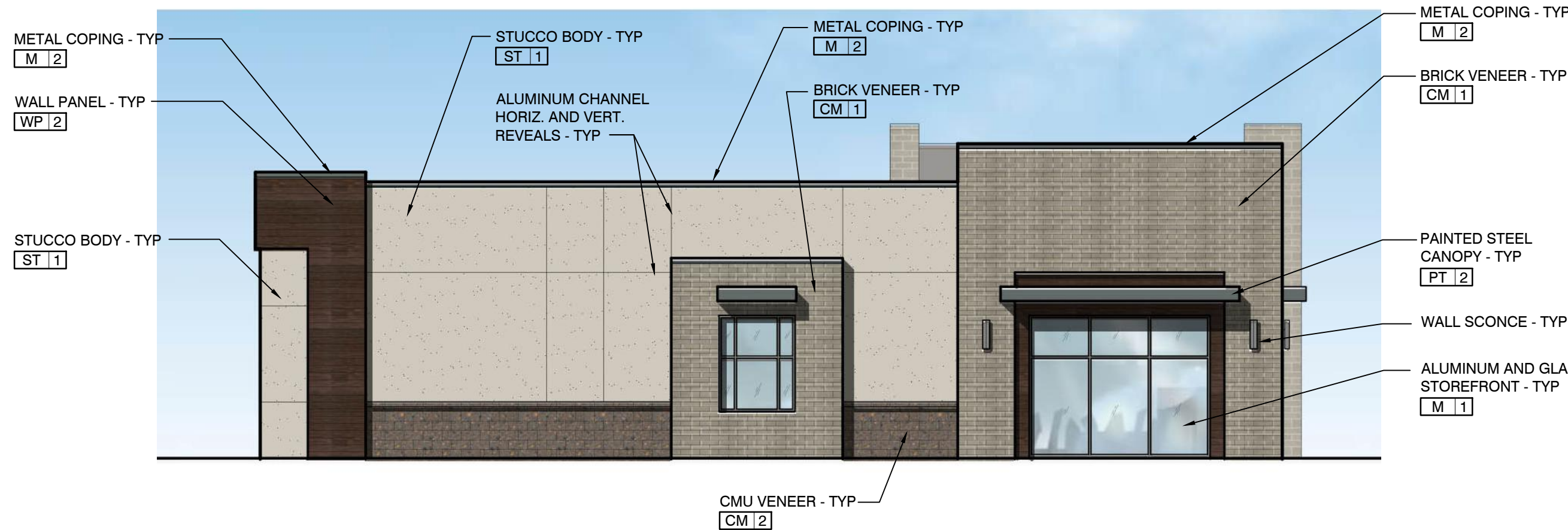
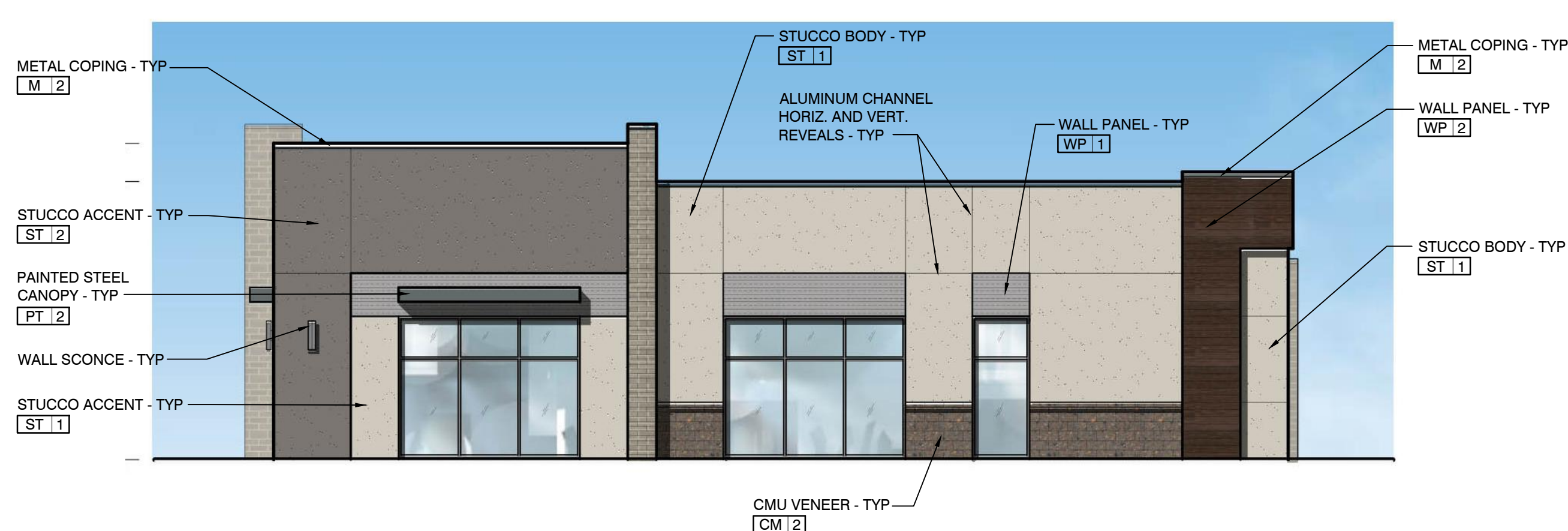


BUCKLEY YARD LOT 4 SITE PLAN WITH ADJUSTMENTS

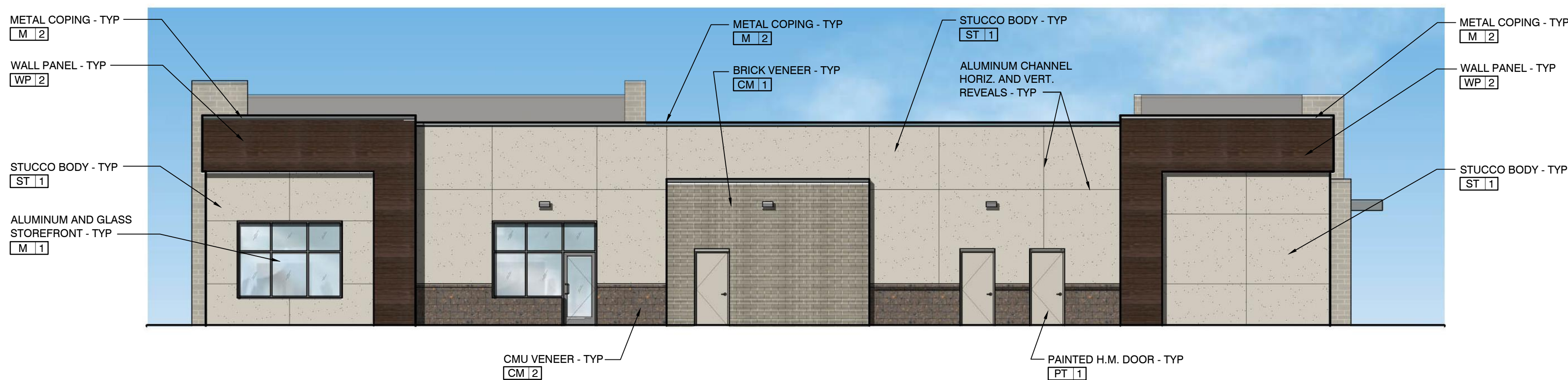
LOT 1, BLOCK 2 BUCKLEY YARD SUBDIVISION FILING NO. 1
LOCATED IN THE NORTHWEST 1/4 OF SECTION 16, T4S, R66W OF THE 6TH P.M.
CITY OF AURORA, COUNTY OF ARAPAHOE, STATE OF COLORADO



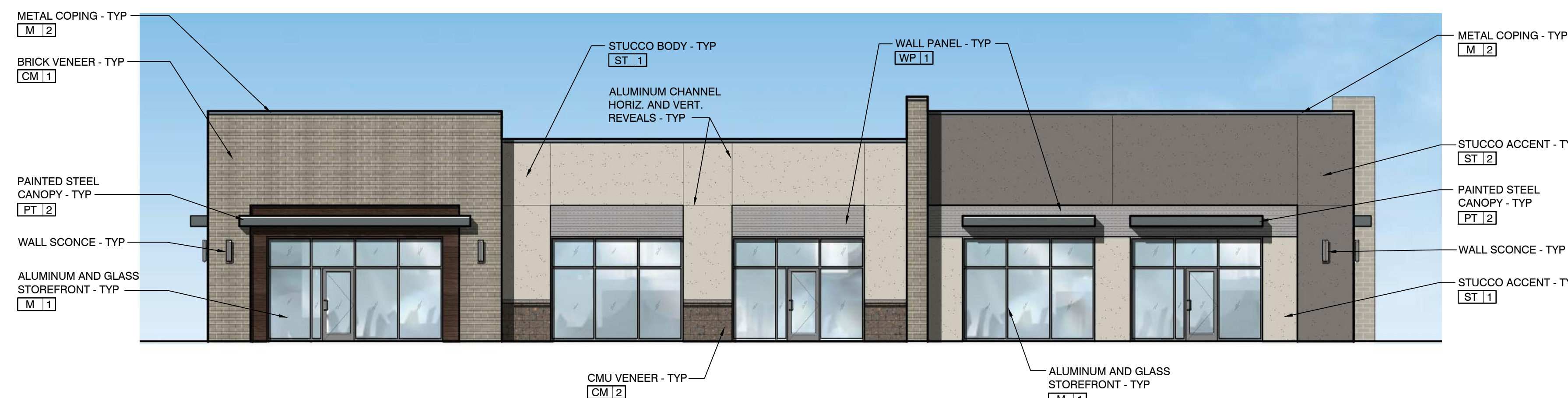
1 NORTH (LEFT SIDE) ELEVATION
SCALE: 1/8" = 1'-0"



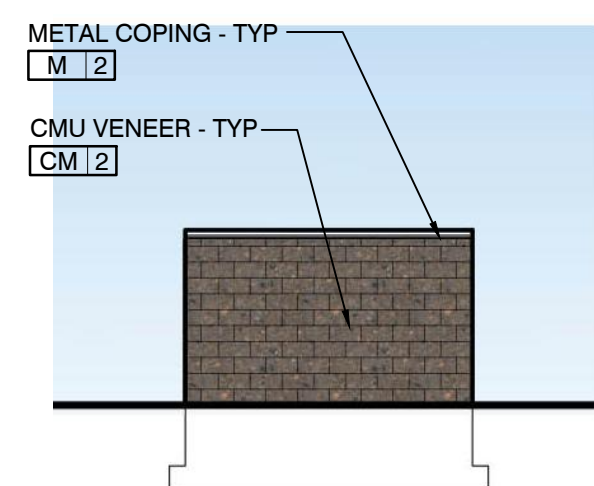
2 SOUTH (RIGHT SIDE) ELEVATION
SCALE: 1/8" = 1'-0"



3 EAST (REAR) ELEVATION
SCALE: 1/8" = 1'-0"

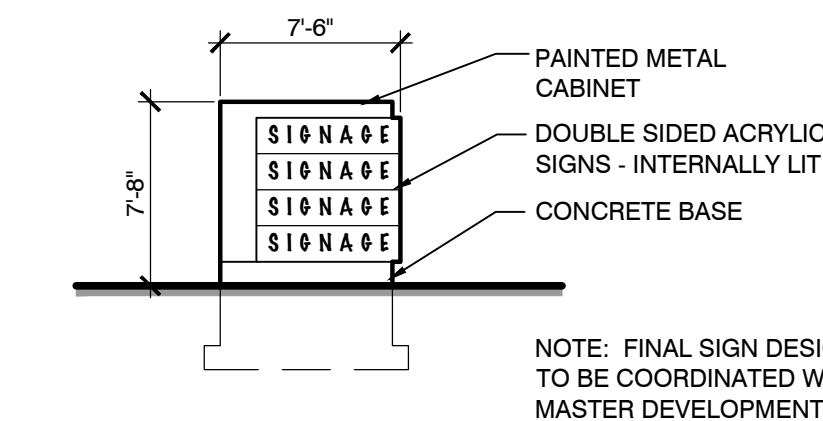
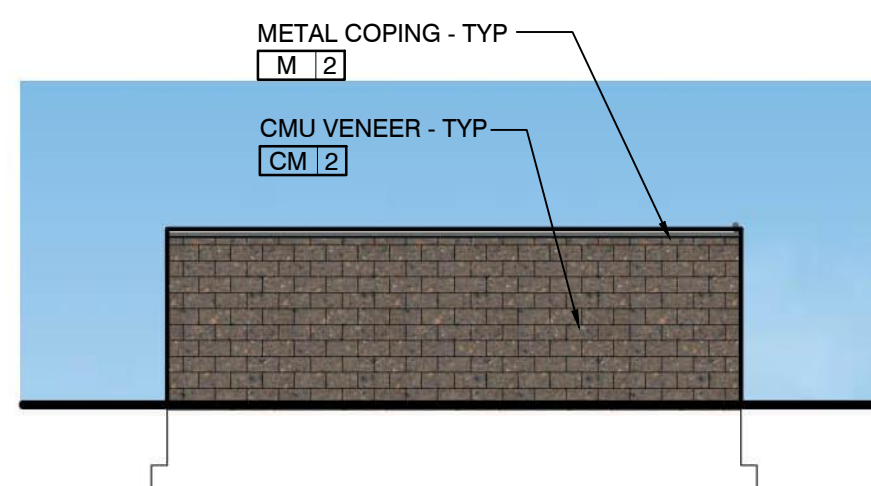
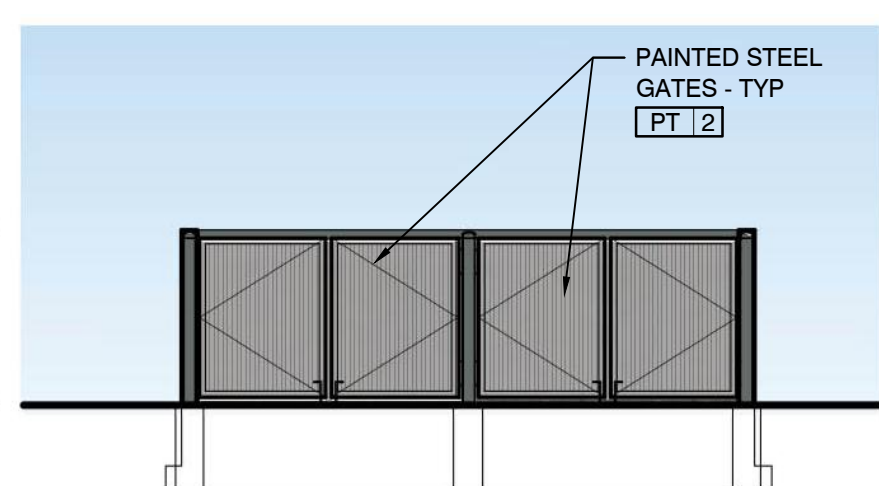


4 WEST (FRONT) ELEVATION
SCALE: 1/8" = 1'-0"



5 TRASH ENCLOSURE ELEVATION
SCALE: 1/8" = 1'-0"

T.O. WALL
ELEV. 107'-4" AFF
CONC. SLAB
ELEV. 100'-0" AFF



6 MONUMENT SIGN ELEVATION
SCALE: 1/8" = 1'-0"

FINISH MATERIALS

MASONRY

CM 1 COMMON BRICK
MFG.: SUMMIT BRICK
COLOR: PEBBLE GRAY

CM 2 8x16 CMU
MFG.: BASALITE
COLOR: SPLITFACE 638R

WALL PANEL

WP 1 CORRUGATED METAL PANEL
MFG.: BERRIDGE
STYLE: BR-12
COLOR: LEAD COTE

WP 2 FIBER CEMENT SIDING
MFG.: WOODSTONE
STYLE: RUSTIC SERIES
COLOR: TIMBER TRAIL

STUCCO

ST 1 STUCCO
MFG.: T.B.D.
COLOR: MATCH SHERWIN WILLIAMS
USEFUL GRAY SW7050

ST 2 STUCCO
MFG.: T.B.D.
COLOR: MATCH SHERWIN WILLIAMS
GAUNLET GRAY SW7019

PAINT

PT 1 H.M. DOORS AND FRAMES, UTILITIES
MFG.: SHERWIN WILLIAMS
COLOR: USEFUL GRAY SW7050

PT 2 STEEL CANOPIES
MFG.: SHERWIN WILLIAMS
COLOR: WEB GRAY SW7075

METAL

M 1 ENTRANCE DOORS AND WINDOWS
MFG.: T.B.D.
COLOR: CLEAR ANODIZED
ALUMINUM
GLASS: CLEAR INSULATED

M 2 SHEET METAL COPING
MFG.: BERRIDGE
COLOR: LEAD COTE

GENERAL NOTES

- ALL GLASS SHALL BE CLEAR.
- ALL SHEET METAL COPINGS, FASCIAS, SOFFITS, GUTTERS AND DOWNSPOUTS SHALL BE PREFINISHED.
- PROVIDE CAULK TO MATCH MORTAR AT ALL STEEL TO MASONRY JOINTS.
- CAULK AT STOREFRONT TO MATCH STOREFRONT COLOR.
- EXTERIOR HOLLOW METAL DOORS AND FRAMES SHALL BE PAINTED.
- ALL EXTERIOR UTILITY EQUIPMENT SHALL BE PAINTED.

0 4' 8' 16'
SCALE: 1/8" = 1'-0"

BUILDING ELEVATIONS MULTI-TENANT RETAIL

NORTH AIRPORT BLVD. AND EAST ALAMEDA PKWY.
LOT 1, BLOCK 2 BUCKLEY YARD SUBDIVISION FILING NO. 1
AURORA, COLORADO

SHEET

7 of 13

DAVID P GOODE
ARCHITECTURE
COMMERCIAL & RESIDENTIAL
558 CASTLE PINES PARKWAY
UNIT B4-174
CASTLE PINES, CO 80108
T: 303.246.4943
WWW.DAVIDPGOOD.COM