



Attention:

Heather Lamboy, Planning Supervisor
City of Aurora Planning Department

Re: Initial Submission Review Response
Application Number: DA-1233-39
Case Number: 2019-6008-00

Planning Department Comments

1. Aurora Public Schools conducts community outreach independent of the cities process. Though we are glad to hear no comments have been received, community outreach is not required from the city on this project.
2. Completeness and Clarity
 - a. APS believes the COA formatting standards conflict with the MOU between the city and the school district. APS references the Harmony P8 project submissions as being in agreement with the MOU. If the city requires specific information, please let us know, but a submission in the form of Mracheck is not being provided.
3. Landscape Design
 - a. This has been updated.
4. Civil Engineering
 - a. The preliminary Drainage Report/Letter is approved.
 - b. This is included.
 - c. This is included.
5. Life Safety
 - a. All FDC, Knox box and fire riser room signage is noted on A-200.
 - b. Notation on C3 has been added.
 - c. E-101 has been added with a minimum average of 1 Ft/Candle along the accessible route.
6. Real Property
 - a. See revised plans.
 - b. The general notes as agreed upon between APS and the city (Heather Lamboy) have been included on the first page of the submission. APS does not agree to all of the cities typical general notes.
 - c. Agreed. See attached revised drawings.
 - d. Agreed. See attached revised drawings.
 - e. It is our understanding that the FRA (the current property owner) has completed the easement release process.
 - f. Agreed. APS is in process and intend to execute agreements as they become the property owner.
7. Traffic Engineering

APS 6-12 (AST) Initial Submission Review Response

September 3, 2019

Page 2

- a. See attached revised drawings and Site Plan.

If there are any additional questions, please don't hesitate to contact me at the information below,

Jessica Blanford

MOA ARCHITECTURE

414 14th Street, Suite 300 | Denver, CO 80202 | P. 303.308.1190 ext 111

facebook.com/moaarch

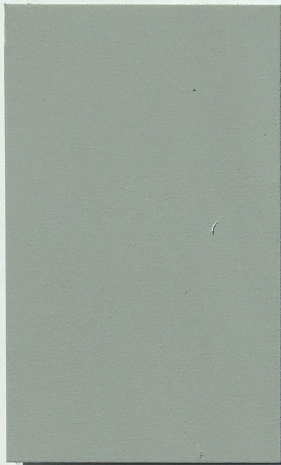
Principal

moaarch.com

Denver, CO | Casper, WY



METAL PANEL: CENTRIA, 784 CLAY



METAL PANEL: CENTRIA, 789 BEDROCK



STOREFRONT: CLEAR ANODIZED



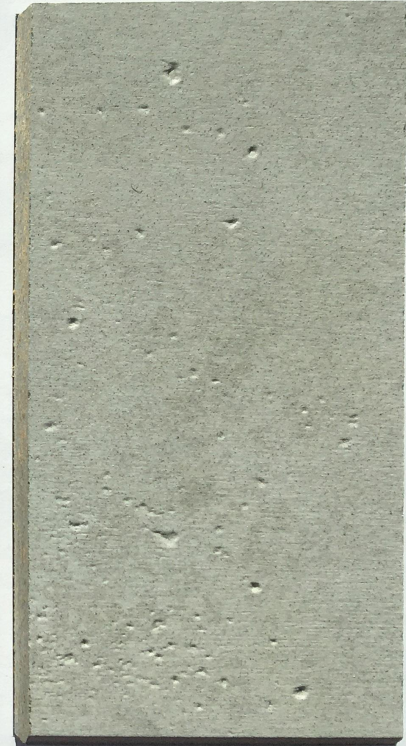
CMU: BASALITE, 900R, 8X16,
GROUND/SPLIT FACE



CMU: BASALITE, 807R, 8X16,
GROUND/SPLIT FACE



CMU: BASALITE, 701R, 4X16,
GROUND FACE



FIBER CEMENT PANEL: NICHHA,
INDUSTRIAL BLOCK CONCRETE

11.10.18



MOA ARCHITECTURE

AURORA PUBLIC SCHOOLS | 6-12 AT FITZSIMONS

