









DRAINAGE / STORM SEWER:

1. THE PROPOSED FIRST CREEK IMPROVEMENTS RESULT AND A NO RISE CONDITION AND ARE NOT SUBJECT TO THE FEMA CLOMR PROCESS. A CITY OF AURORA FLOODPLAIN DEVELOPMENT PERMIT WILL BE APPLIED FOR BASED ON DOCUMENTATION OF A NO RISE CONDITION.
2. THE PROPOSED IMPROVEMENT REACH OF FIRST CREEK HAS BEEN DETERMINED TO BE NON-JURISDICTIONAL BY THE USAGE AND IS NOT SUBJECT TO CLEAN WATER ACT COMPLIANCE THROUGH 404 PERMITTING.
3. THE PROPOSED CHANNEL RIFFLE CONCEPT WAS DEVELOPED BY ECOLOGICAL RESOURCE CONSULTANTS, INC. AND REFLECTS A GEOMORPHICALLY INFORMED HIGH FUNCTIONING LOW MAINTENANCE STREAM CORRIDOR DESIGNED TO MIMIC NATURAL CHANNEL PROCESSES.
4. BMPs AND EROSION CONTROL MEASURES SHALL BE INSTALLED TO MINIMIZE EROSION AND REDUCE EROSION CHARACTERISTICS AT CULVERT CROSSING AND WITHIN PROPOSED CHANNEL CONVEYANCE PATHS.

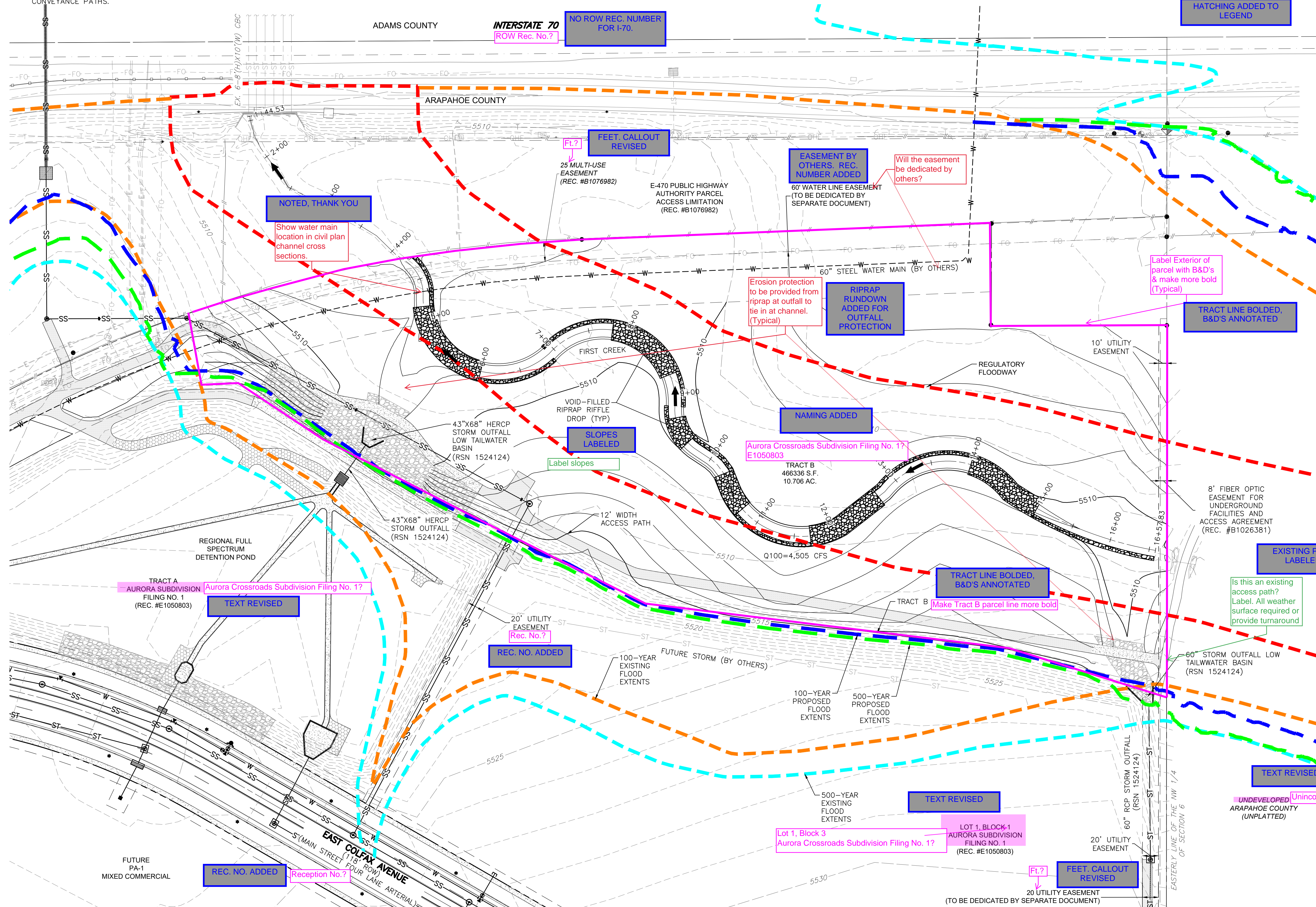
LEGEND

-  FEMA EFFECTIVE 100-YR FLOOD EXTENTS  
 FEMA EFFECTIVE 500-YR FLOOD EXTENTS  
 REGULATORY FLOODWAY  
 PROPOSED 100-YR FLOOD EXTENTS  
 PROPOSED 500-YR FLOOD EXTENTS

Include FIRM  
Panel and effective  
date

FIRM AND  
EFFECTIVE DATE  
ADDED

## WATCHING ADDED LEGEND



60 30 0 60 120  
SCALE: 1"=60'  
ALL LINEAL DIMENSIONS ARE IN U.S. SURVEY FEET

# INFRASTRUCTURE SITE PLAN

FIRST CREEK CHANNEL  
AURORA, COLORADO

Design Project No.  
**19.1522 C05**

---

Drawing Title

**OVERALL SITE  
PLAN - FIRST  
CREEK CHANNEL**

Drawing No.

2

[illegible]

**NORRIS DESIGN**  
Planning | Landscape Architecture | Branding

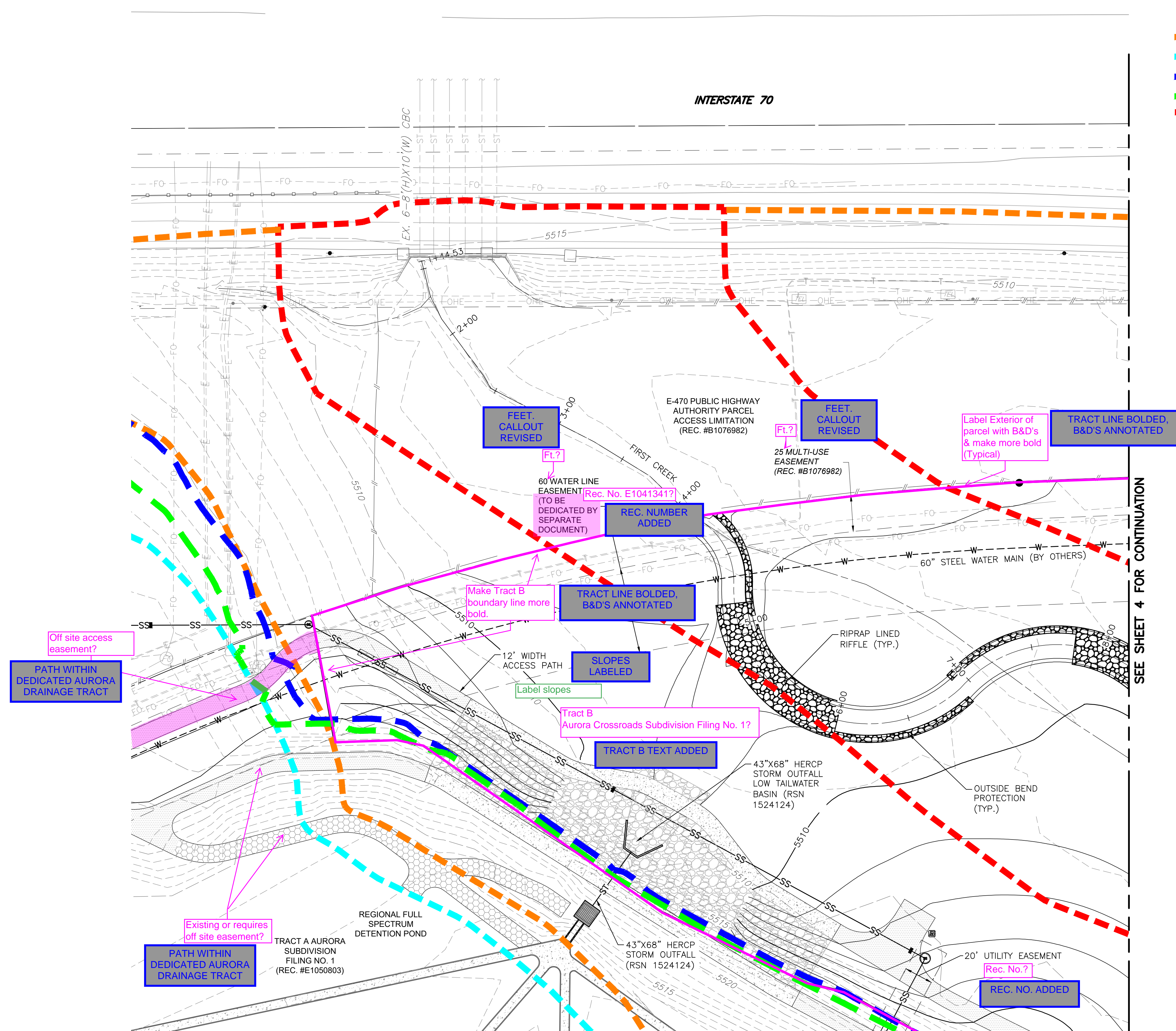
1101 Bannock Street  
Denver, Colorado 80204  
P 303.892.1166  
[www.norris-design.com](http://www.norris-design.com)

**MARTIN/MARTIN**  
CONSULTING ENGINEERS  
12499 WEST COLFAX AVENUE, LAKEWOOD, COLORADO 80215  
903.431.6100 MARTINMARTIN.COM



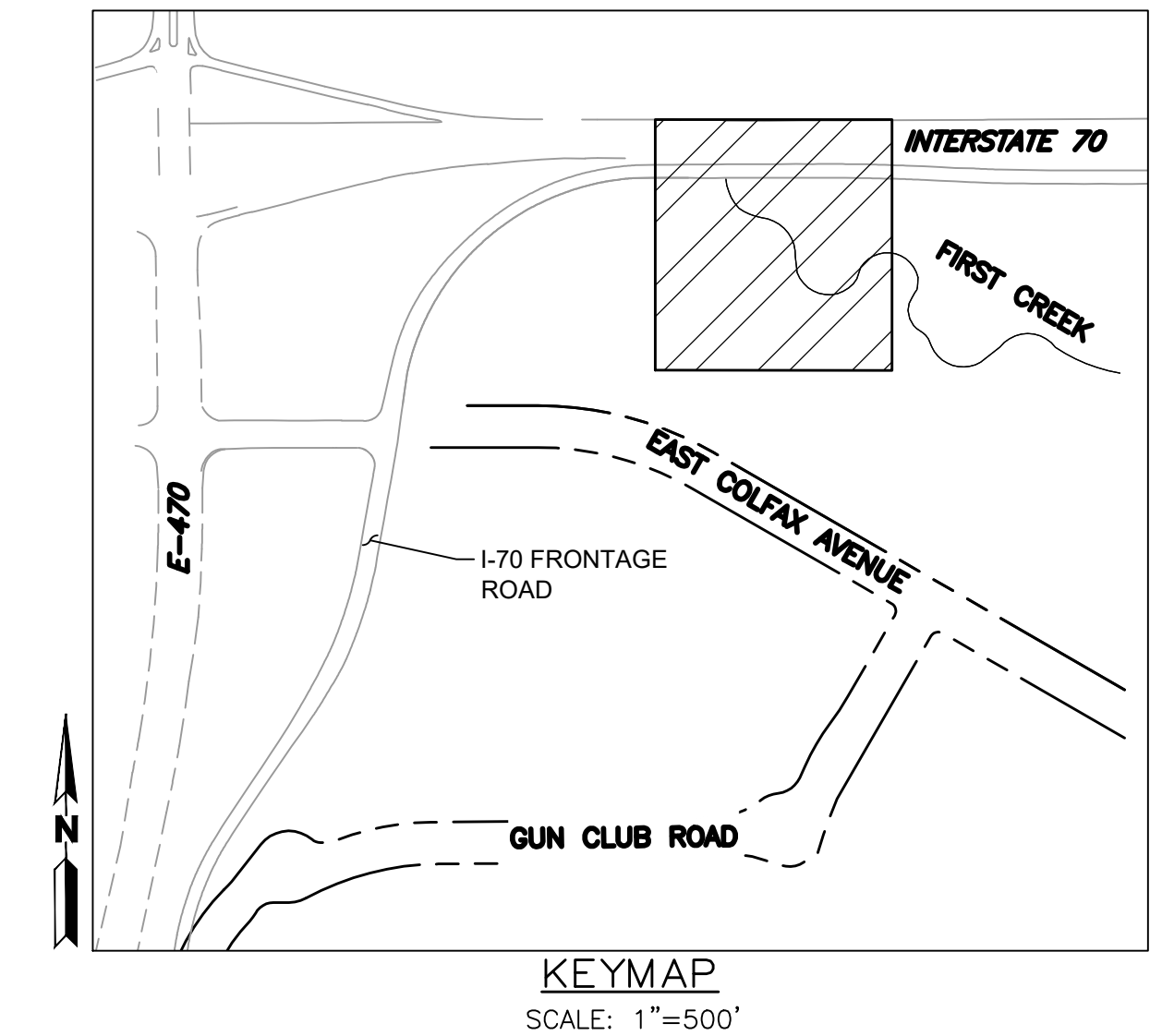
# FIRST CREEK AT AURORA CROSSROADS SUBDIVISION FILING NO. 1 SITE PLAN

A PARCEL OF LAND LOCATED IN THE WEST HALF OF SECTION 6,  
TOWNSHIP 4 SOUTH, RANGE 65 WEST OF THE 6TH PRINCIPAL MERIDIAN, CITY OF AURORA,  
COUNTY OF ARAPAHOE, STATE OF COLORADO



NOTES:

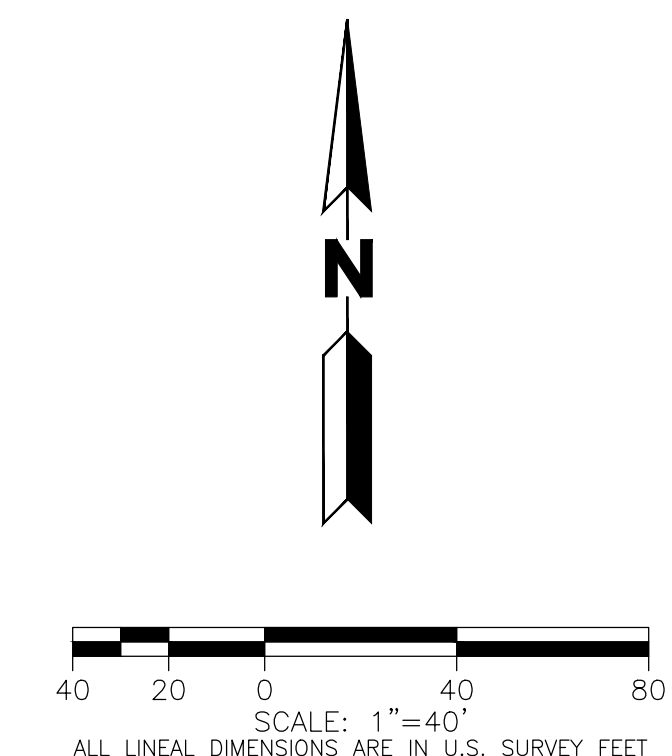
1. STORM SEWER WITHIN ROW IS PUBLIC AND WILL BE OWNED AND MAINTAINED BY THE CITY OF AURORA. STORM SEWER OUTSIDE ROW IS PRIVATE AND WILL BE OWNED AND MAINTAINED BY THE AURORA CROSSROADS METROPOLITAN DISTRICT NO. 1.
2. BMPS AND EROSION CONTROL MEASURES SHALL BE INSTALLED TO MINIMIZE EROSION AND REDUCE EROSION CHARACTERISTICS AT CULVERT CROSSING AND WITHIN PROPOSED CHANNEL CONVEYANCE PATHS.



EXISTING	LEGEND	PROPOSED
	PROPERTY LINE	
	RIGHT-OF-WAY LINE	
	SECTION LINE	
	SIGHT TRIANGLE	
	EASEMENT	
	CONTOURS	
	CURB & GUTTER	
	HANDICAP RAMPS	
	GRADING ARROW	
	STORM SEWER	
	STORM MANHOLE	
	STORM INLET	
	FLARED END SECTION	
	SANITARY SEWER	
	SANITARY MANHOLE	
	WATER LINE	
	WATER VALVE	
	FIRE HYDRANT	
	LIGHT POLE	
	SIGN	

Add hatching to  
legend (Typical)

HATCHING ADDED TO  
LEGEND



# INFRASTRUCTURE SILE PLAN

FIRST CREEK CHANNEL  
AURORA, COLORADO

Design Project No.  
**19.1522 C05**

Drawing Title  
**SITE PLAN -  
FIRST CREEK  
CHANNEL  
(0+00-8+00)**

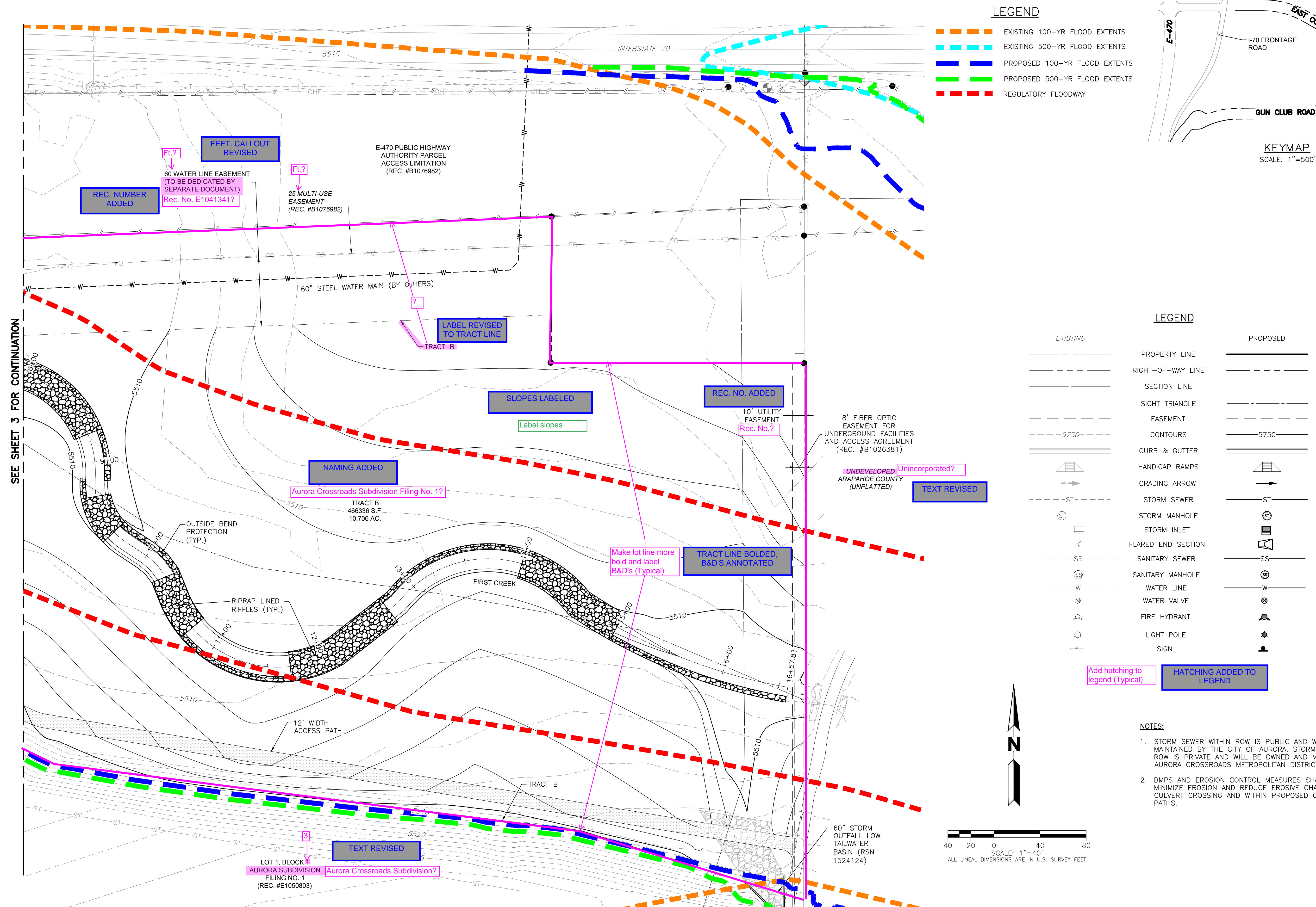
3

[illegible]



# FIRST CREEK AT AURORA CROSSROADS SUBDIVISION FILING NO. 1 SITE PLAN

A PARCEL OF LAND LOCATED IN THE WEST HALF OF SECTION 6,  
TOWNSHIP 4 SOUTH, RANGE 65 WEST OF THE 6TH PRINCIPAL MERIDIAN, CITY OF AURORA,  
COUNTY OF ARAPAHOE, STATE OF COLORADO

[illegible]

**NORRIS DESIGN**  
Planning | Landscape Architecture | Branding

1101 Bannock Street  
Denver, Colorado 80204  
P 303.892.1166  
[www.norris-design.com](http://www.norris-design.com)

**MARTIN/MARTIN**  
CONSULTING ENGINEERS  
499 WEST COLFAX AVENUE, LAKEWOOD, COLORADO 80215  
3.431.6100 MARTINMARTIN.COM

FIRST CREEK CHANNEL  
AURORA, COLORADO

Design Project No.  
**19.1522 C05**

SITE PLAN -  
FIRST CREEK  
CHANNEL  
(8+00-16+57.83)

Drawing No.





# FIRST CREEK AT AURORA CROSSROADS SUBDIVISION FILING NO. 1 SITE PLAN

A PARCEL OF LAND LOCATED IN THE WEST HALF OF SECTION 6,  
TOWNSHIP 4 SOUTH, RANGE 65 WEST OF THE 6TH PRINCIPAL MERIDIAN, CITY OF AURORA,  
COUNTY OF ARAPAHOE, STATE OF COLORADO

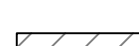
### PLANT SCHEDULE

DECIDUOUS TREES		BOTANICAL NAME	COMMON NAME	ROOT	SIZE	QTY
CA SP		CATALPA SPECIOSA	NORTHERN CATALPA	B & B	2" CAL	3
CE OC		CELTIS OCCIDENTALIS	COMMON HACKBERRY	B & B	2" CAL	5
GL SH		GLEDTISIA TRIACANTHOS INERMIS 'SHADEMASTER' TM	SHADEMASTER LOCUST	B & B	2" CAL	4
PO DE		POPULUS DELTOIDES	EASTERN COTTONWOOD	B & B	2" CAL	10
UL PR		ULMUS AMERICANA 'PRINCETON'	AMERICAN ELM	B & B	2" CAL	3
<b>EVERGREEN TREES</b>						
JU SC		JUNIPERUS SCOPULORUM	ROCKY MOUNTAIN JUNIPER	B & B	6' HEIGHT	2
PI ED		PINUS EDULIS	PINON PINE	B & B	6' HEIGHT	1
PI PO		PINUS PONDEROSA	PONDEROSA PINE	B & B	6' HEIGHT	3
<b>ORNAMENTAL TREES</b>						
AL TE		ALNUS INCANA 'TENUIFOLIA	THINLEAF ALDER	B & B	6' CLUMP	9
RH TY		RHUS TYPHINA	STAGHORN SUMAC	B & B	6' CLUMP	6
SA AM		SALIX AMYGDALOIDES	PEACH LEAF WILLOW	B & B	6' CLUMP	6
SA EX		SALIX EXIGUA	COYOTE WILLOW	B & B	6' CLUMP	7
<b>DECIDUOUS SHRUBS</b>						
AM CA		AMORPHA CANESCENS	LEADPLANT	CONT	5 GAL	7
AR FL		ARTEMISIA FILIFOLIA	SAND SAGEBRUSH	CONT	5 GAL	7
AR FR		ARTEMISIA FRIGIDA	FRINGED WORMWOOD	CONT	1 GAL	6
AR TR		ARTEMISIA TRIDENTATA	BIG SAGEBRUSH	CONT	5 GAL	7
CH NA		CHRYSOETHAMNUS NAUSEOSUS	RUBBER RABBITBRUSH	CONT	5 GAL	7
CH AL		CHRYSOETHAMNUS NAUSEOSUS ALBICAULIS	TALL BLUE RABBITBRUSH	CONT	5 GAL	7
FA PA		FALLUGIA PARADOXA	APACHE PLUME	CONT	5 GAL	11
KR CL		KRASCHENINNIKOVIA CERATOIDES LANATA	WINTERFAT	CONT	5 GAL	7
PR BE		PRUNUS BESSEYI	WESTERN SAND CHERRY	CONT	5 GAL	7
PR CH		PRUNUS VIRGINIANA	CHOKECHERRY	CONT	5 GAL	13
RH TR		RHUS TRILOBATA	SKUNKBUSH SUMAC	CONT	5 GAL	10
RI AU		RIBES AUREUM	GOLDEN CURRANT	CONT	5 GAL	7
<b>EVERGREEN SHRUBS</b>						
AT CA		ATRIPLEX CANESCENS	FOURWING SALTBUSH	CONT	5 GAL	5
PI DW		PINUS EDULIS	DWARF PINON PINE	CONT	5 GAL	4
YU GL		YUCCA GLAUCA	SOAPWEED	CONT	5 GAL	3

### SEED MIX LIST

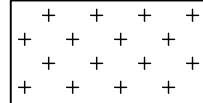
## UPLAND NATIVE SEED MIX - TEMPORARILY IRRIGATED

DRYLAND SEED MIX OR APPROVED EQUAL. CONTRACTOR TO SUBMIT CUTSHEETS FOR APPROVAL

COMMON NAME		BOTANICAL NAME	% OF TOTAL	PLS PER ACRE
	SIDE OATS GRAMA	BOULELOUA CURTIPENDULA	12.9%	4.00 LBS
	BUFFALOGRASS	BOULELOUA DACTYLOIDES	19.4%	6.00 LBS
	BLUE GRAMA	CHONDROSUM GRACILE	12.9%	4.00 LBS
	JUNEGRASS	KOELERIA CRISTATA	3.2%	1.00 LBS
	WESTERN WHEATGRASS	PASCOPYRUM SMITHII	22.6%	7.00 LBS
	LITTLE BLUESTEM	SCHIZACHYRIUM SCOPARIUM	6.5%	2.00 LBS
	SAND DROPSEED	SPOROBOLUS CRYPTANDRUS	3.2%	1.00 LBS
	GREEN NEEDLEGRASS	STIPA VIRIDULA (AKA NASELLA)	16.1%	5.00 LBS
	ARKANSAS VALLEY PERENNIAL WILDFLOWER MIX		3.2%	1.00 LBS
				100%

## WETLAND / RIPARIAN SEED MIX - NON-IRRIGATED

DRYLAND SEED MIX OR APPROVED EQUAL. CONTRACTOR TO SUBMIT CUTSHEETS FOR APPROVAL

COMMON NAME		BOTANICAL NAME	% OF TOTAL	PLS PER ACRE
	WOOLY SEDGE	CAREX PELLITA	0.8%	0.25 LBS
	NEBRASKA SEDGE	CAREX NEBRASCENSIS	0.8%	0.25 LBS
	INLAND SALT GRASS	DISTICHIS SPICATA	0.8%	0.25 LBS
	CREeping SPIKERUSH	ELEOCHARIS PALUSTRIS	0.8%	0.25 LBS
	WESTERN WHEATGRASS	PASCOPIRUM SMITHII	39.2%	11.75 LBS
	SWITCHGRASS	PANICUM VIRGATUM	7.5%	2.25 LBS
	GREEN NEEDLEGRASS	NASELLA VIRIDULA	24.9%	7.45 LBS
	PRAIRIE CORDGRASS	SPARTINA PECTINATA	5.8%	1.75 LBS
	YARROW	ACHILLEA MILLEFOLIUM	0.4%	0.10 LBS
	NUT TALL'S SUNFLOWER	HELIANTHUS NUTTALLII	8.3%	2.50 LBS
	MOUNTAIN RUSH	JUNCUS ARTICUSS SSP. LITTORALIS	0.4%	0.10 LBS
	ALKALI SACATON	SPOROBOLIS AIROIDES	0.8%	0.25 LBS
	WILD BERGAMOT	MONARDA FISTULOSA	0.4%	0.10 LBS
	SWAMP VERBENA	VERBENA HASTATA	2.5%	0.75 LBS
ARKANSAS VALLEY PERENNIAL WILDFLOWER MIX		3.3%	1.00 LBS	
ARKANSAS VALLEY WESTERN WILDFLOWER MIX		3.3%	1.00 LBS	
NOTE: ALL WETLAND SEED AREAS WILL BE OVERSEEDED WITH THE UPLAND NATIVE SEED MIX FOR A BLENDED MIX FOR ESTABLISHMENT.			100%	30.00 LBS. DRILLED

[illegible]

The first two steps are the most important. The first step is to identify the problem. The second step is to define the problem. The third step is to identify the causes of the problem. The fourth step is to identify the effects of the problem. The fifth step is to identify the stakeholders involved in the problem. The sixth step is to identify the resources available to solve the problem. The seventh step is to identify the constraints on the problem. The eighth step is to identify the risks associated with the problem. The ninth step is to identify the opportunities associated with the problem. The tenth step is to identify the solutions to the problem.

  
**NORRIS DESIGN**  
Planning | Landscape Architecture | Branding

---

1101 Bannock Street  
Denver, Colorado 80204  
P 303.892.1166  
[www.norris-design.com](http://www.norris-design.com)



MARTIN/MARTIN  
CONSULTING ENGINEERS  
12499 WEST COLFAX AVENUE, LAKEWOOD, COLORADO 80215  
303.431.6100 MARTINMARTIN.COM

INFRASTRUCTURE SITE PLAN

Design Project No.  
**19.1522 C05**

Drawing Title

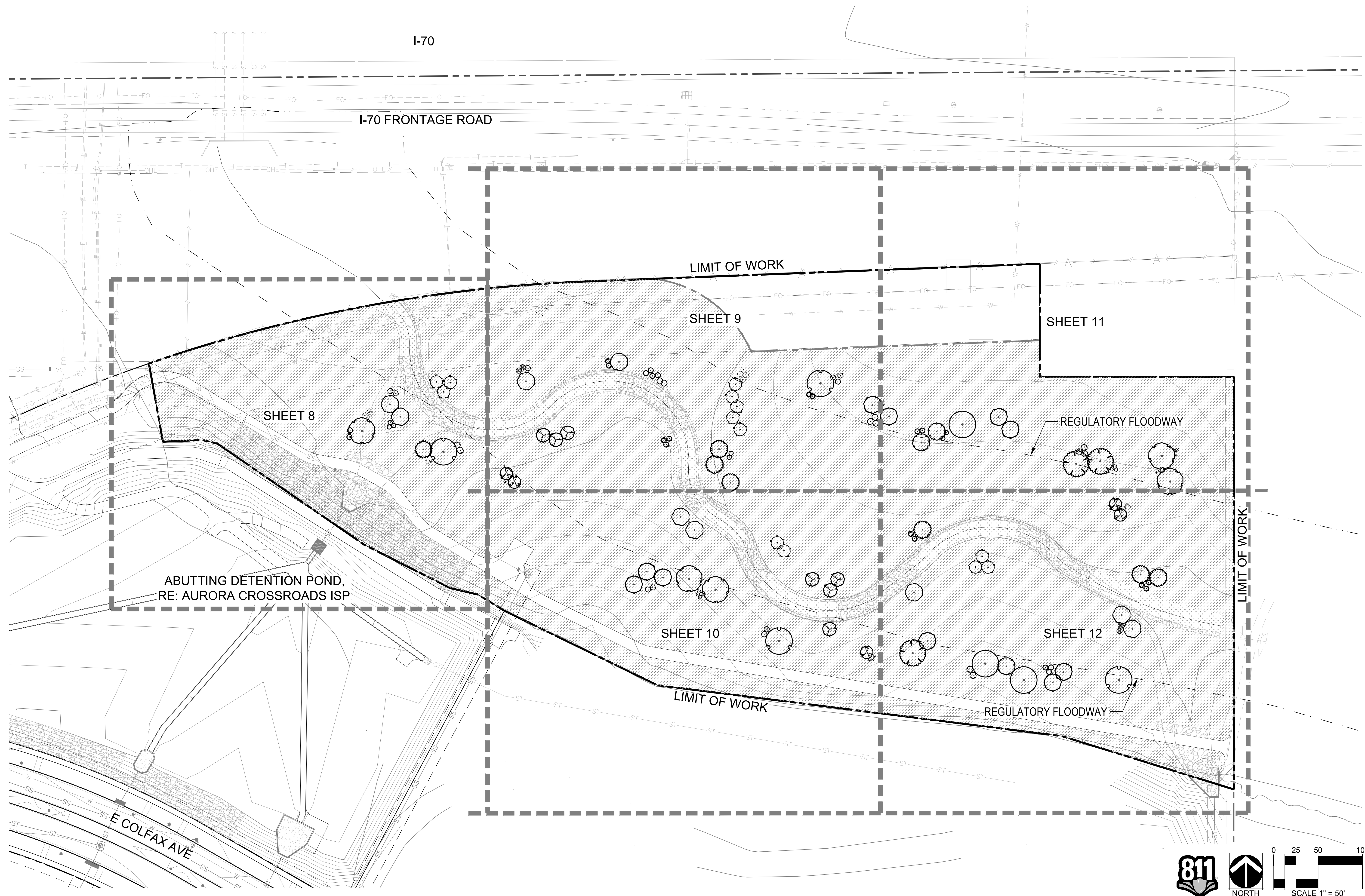
LANDSCAPE  
SCHEDULE

Drawing No.



# FIRST CREEK AT AURORA CROSSROADS SUBDIVISION FILING NO. 1 SITE PLAN

A PARCEL OF LAND LOCATED IN THE WEST HALF OF SECTION 6,  
TOWNSHIP 4 SOUTH, RANGE 65 WEST OF THE 6TH PRINCIPAL MERIDIAN, CITY OF AURORA,  
COUNTY OF ARAPAHOE, STATE OF COLORADO



The first two steps are the most important. The first step is to identify the problem. The second step is to define the problem. The third step is to identify the causes of the problem. The fourth step is to identify the effects of the problem. The fifth step is to identify the stakeholders involved in the problem. The sixth step is to identify the resources available to solve the problem. The seventh step is to identify the constraints on the problem. The eighth step is to identify the risks associated with the problem. The ninth step is to identify the opportunities associated with the problem. The tenth step is to identify the solutions to the problem. The eleventh step is to identify the implementation of the solutions. The twelfth step is to identify the evaluation of the solutions. The thirteenth step is to identify the monitoring of the solutions. The fourteenth step is to identify the reporting of the solutions. The fifteenth step is to identify the communication of the solutions. The sixteenth step is to identify the documentation of the solutions. The seventeenth step is to identify the archiving of the solutions. The eighteenth step is to identify the disposal of the solutions. The nineteenth step is to identify the recycling of the solutions. The twentieth step is to identify the reuse of the solutions.

**NORRIS DESIGN**  
Planning | Landscape Architecture | Branding

1101 Bannock Street  
Denver, Colorado 80204  
P 303.892.1166  
[www.norris-design.com](http://www.norris-design.com)



MARTIN/MARTIN  
CONSULTING ENGINEERS  
499 WEST COLFAX AVENUE, LAKEWOOD, COLORADO 80215  
3.431.6100 MARTINMARTIN.COM

FIRST CREEK CHANNEL  
AURORA, COLORADO

sign Project No.  
**19.1522 C05**

Following Title

## OVERALL LANDSCAPE PLAN

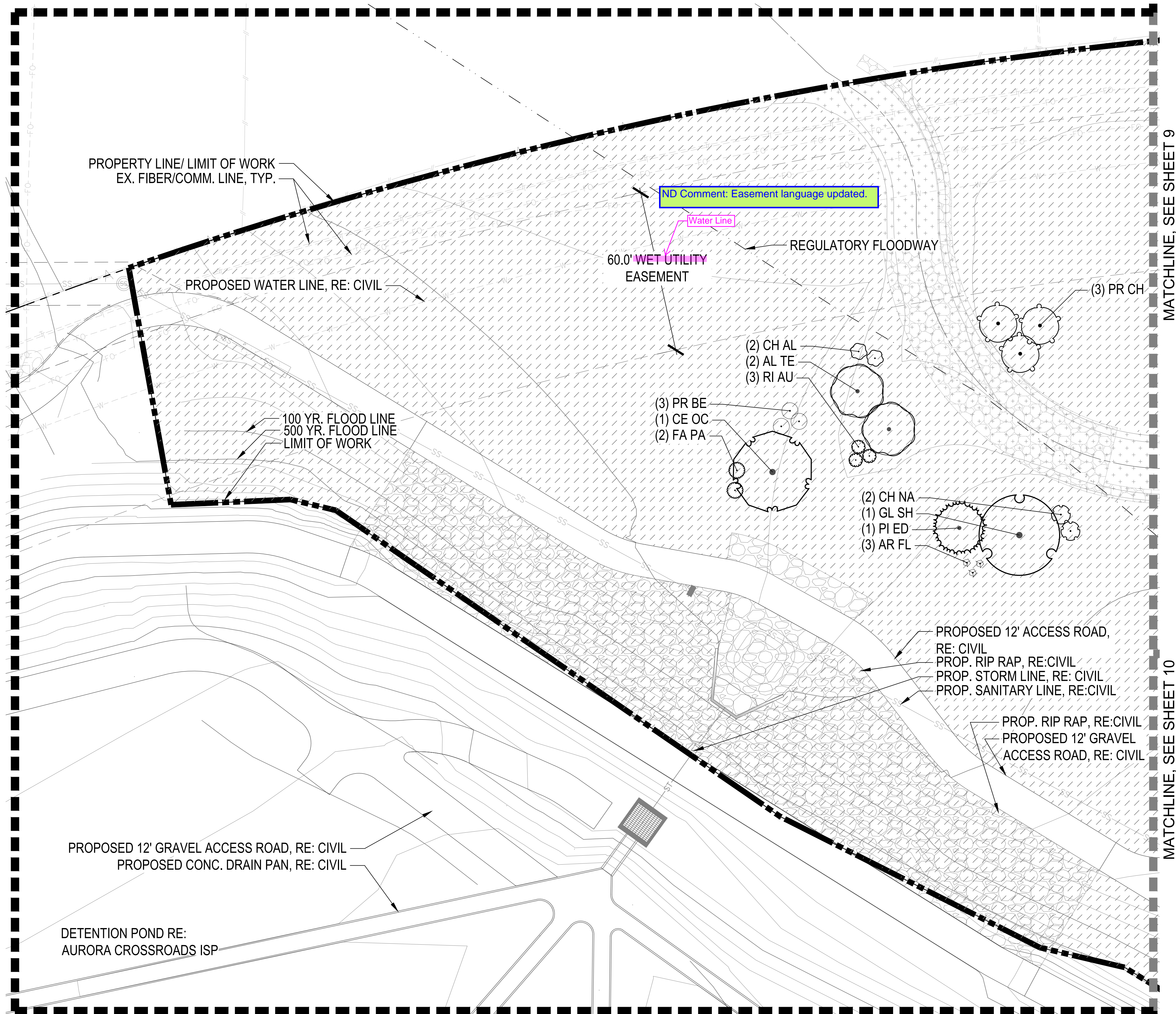
Drawing No.

7

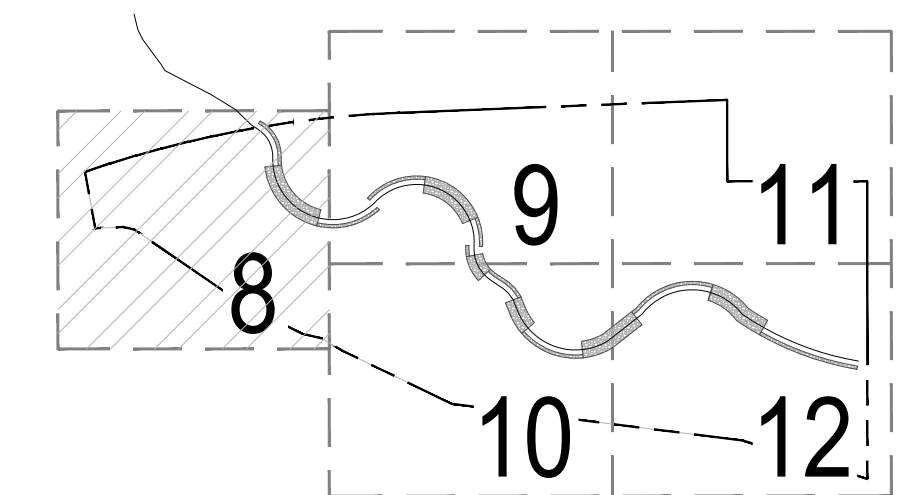


# FIRST CREEK AT AURORA CROSSROADS SUBDIVISION FILING NO. 1 SITE PLAN

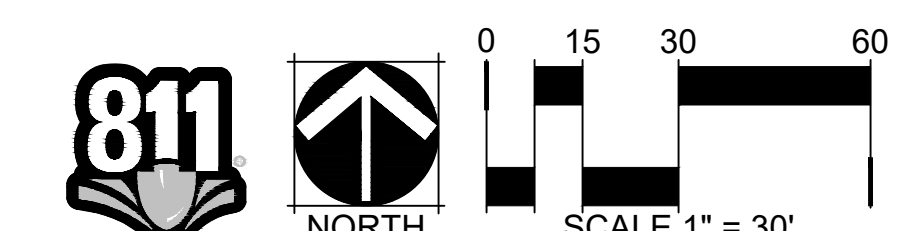
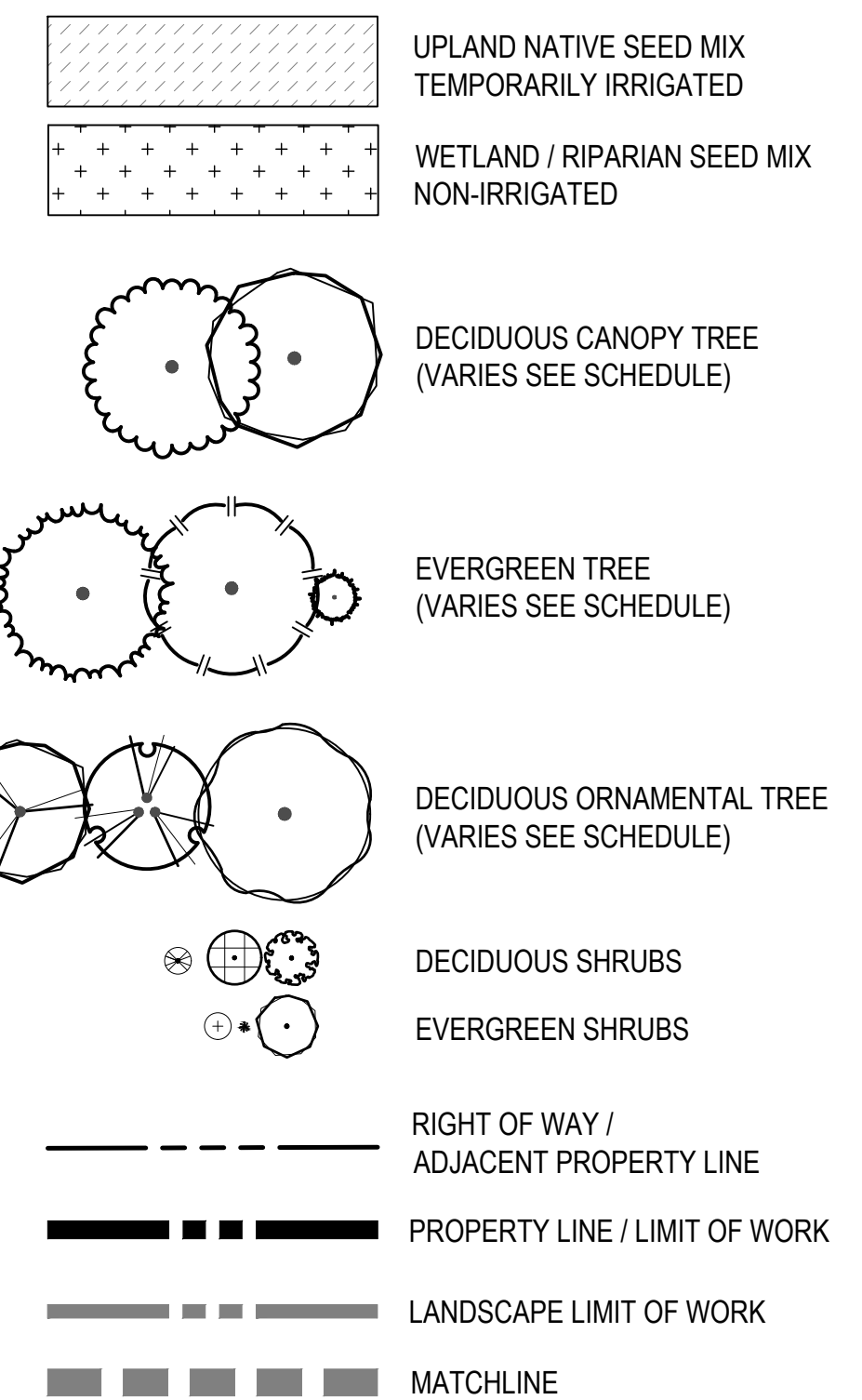
A PARCEL OF LAND LOCATED IN THE WEST HALF OF SECTION 6,  
TOWNSHIP 4 SOUTH, RANGE 65 WEST OF THE 6TH PRINCIPAL MERIDIAN, CITY OF AURORA,  
COUNTY OF ARAPAHOE, STATE OF COLORADO



## KEY MAP



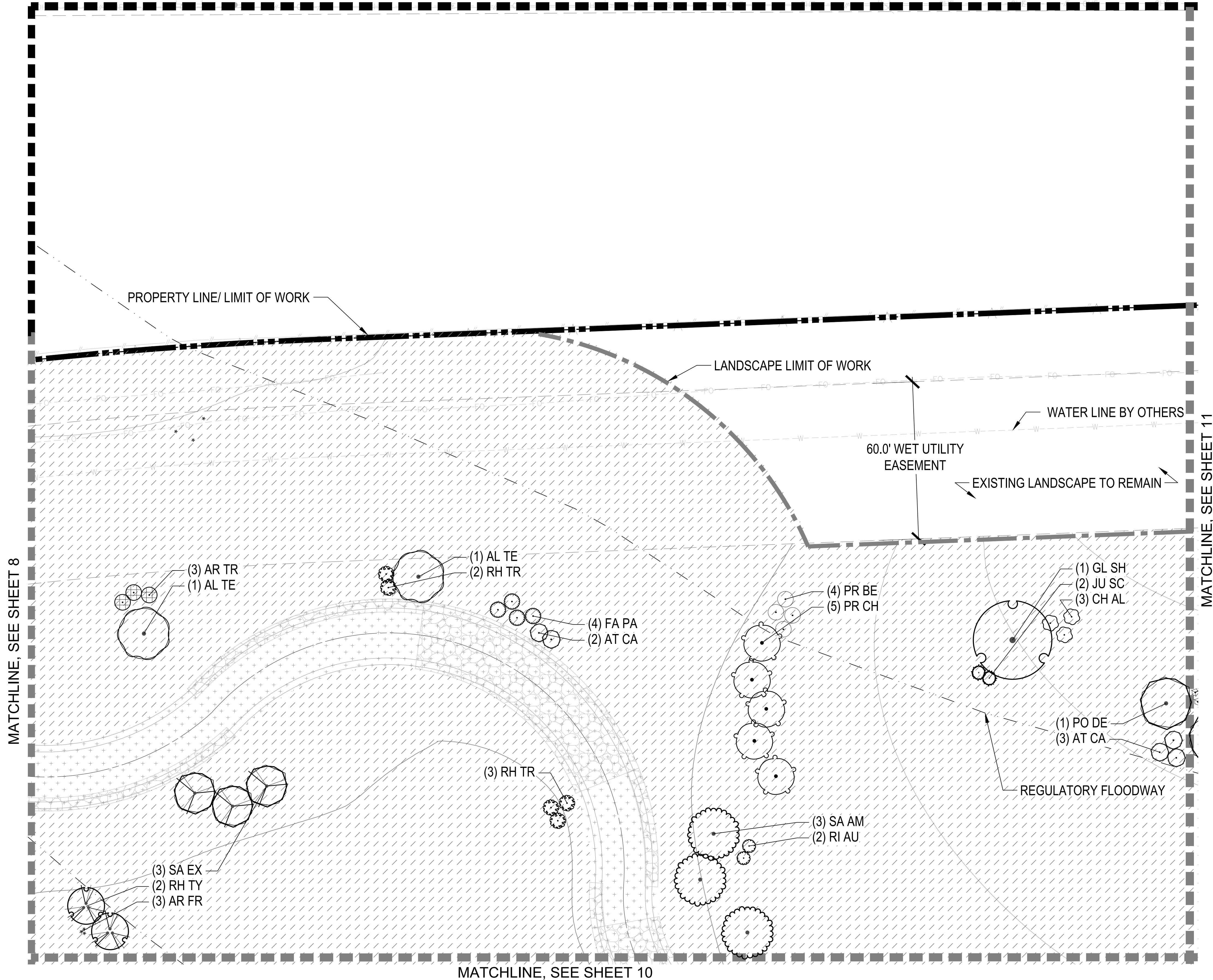
### LEGEND



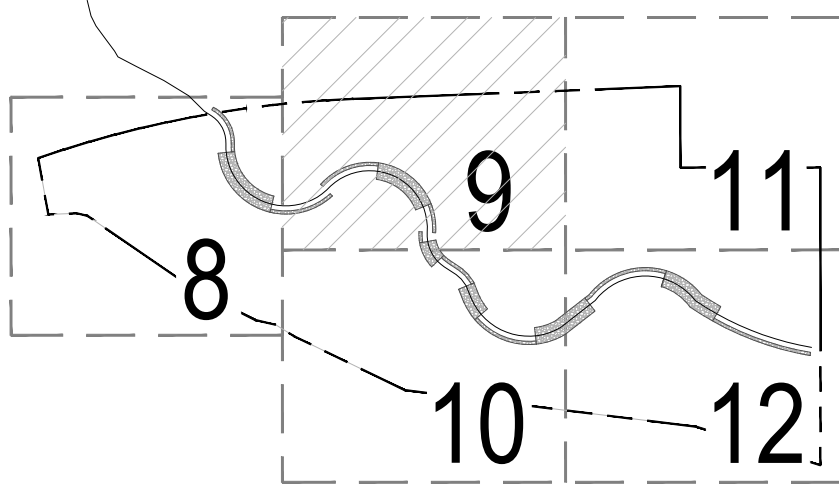


# FIRST CREEK AT AURORA CROSSROADS SUBDIVISION FILING NO. 1 SITE PLAN

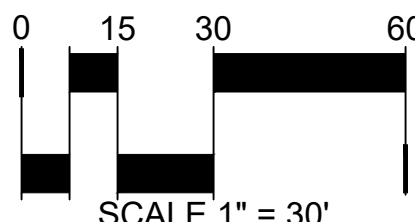
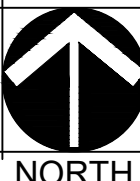
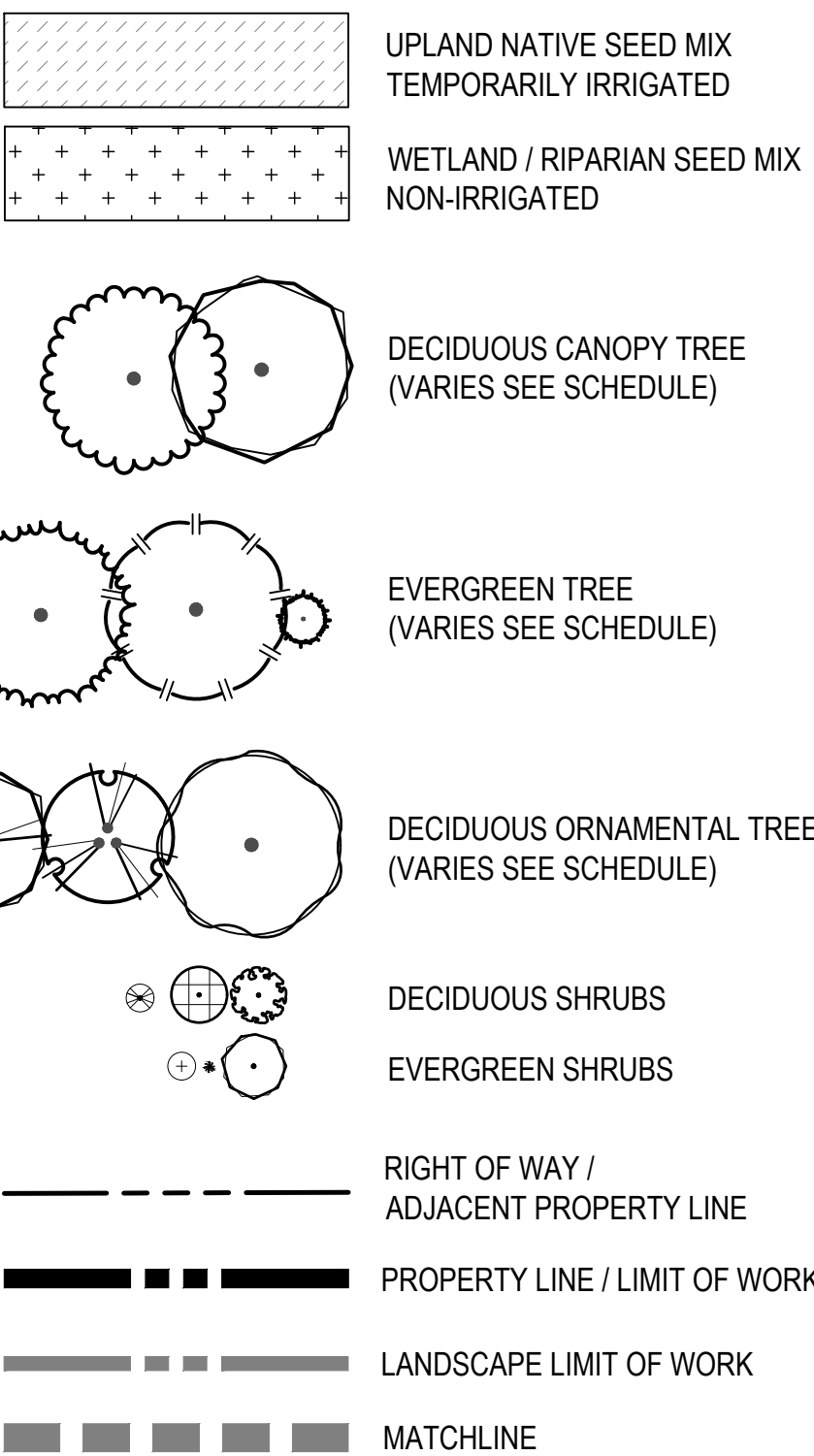
A PARCEL OF LAND LOCATED IN THE WEST HALF OF SECTION 6,  
TOWNSHIP 4 SOUTH, RANGE 65 WEST OF THE 6TH PRINCIPAL MERIDIAN, CITY OF AURORA,  
COUNTY OF ARAPAHOE, STATE OF COLORADO



## KEY MAP



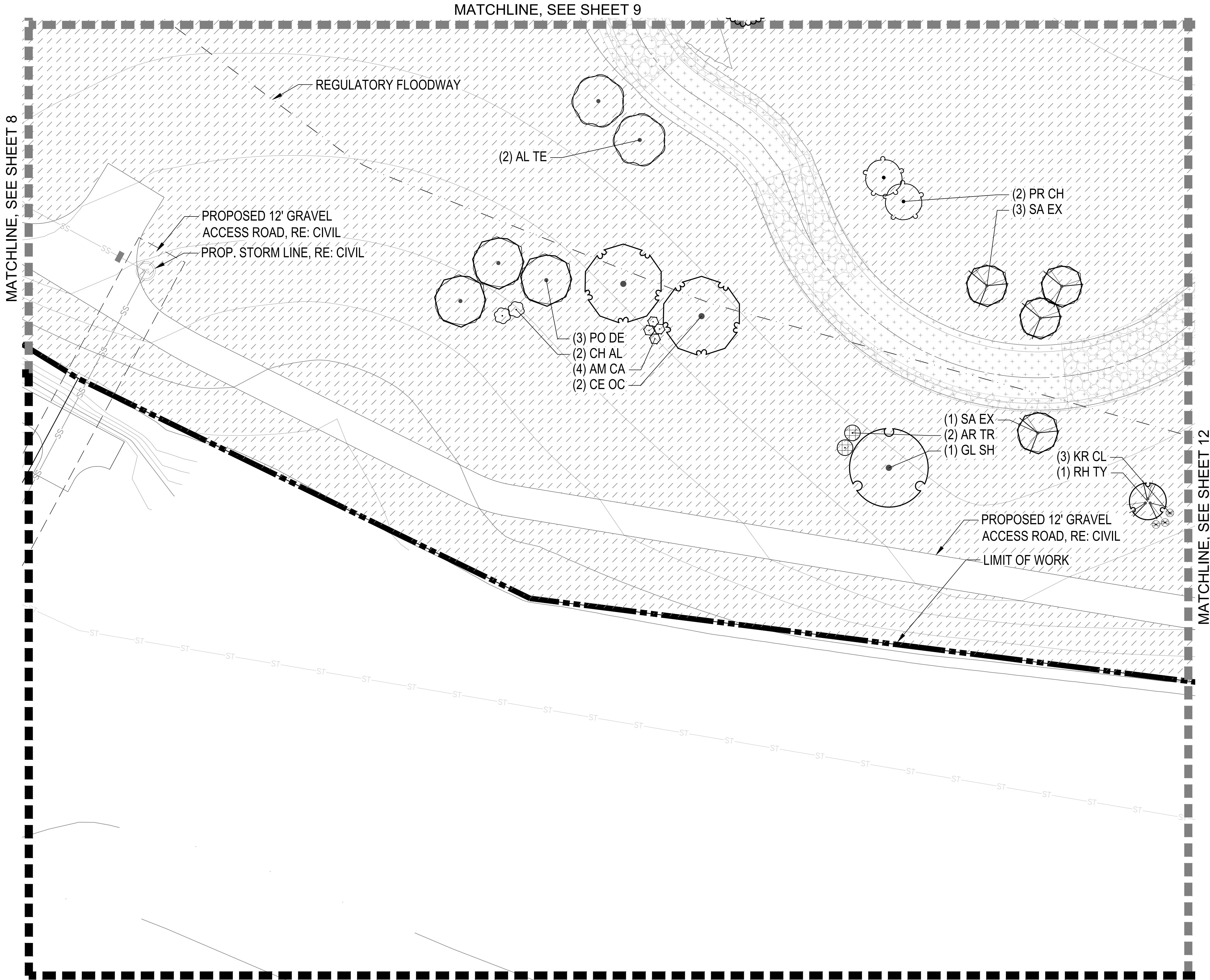
## LEGEND



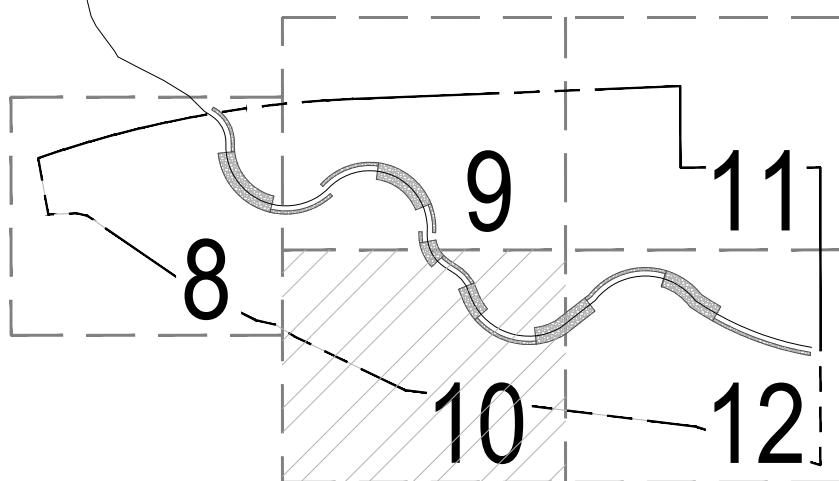


# FIRST CREEK AT AURORA CROSSROADS SUBDIVISION FILING NO. 1 SITE PLAN

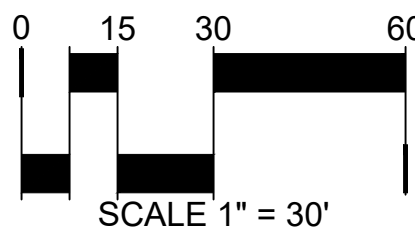
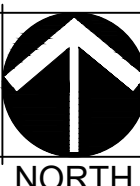
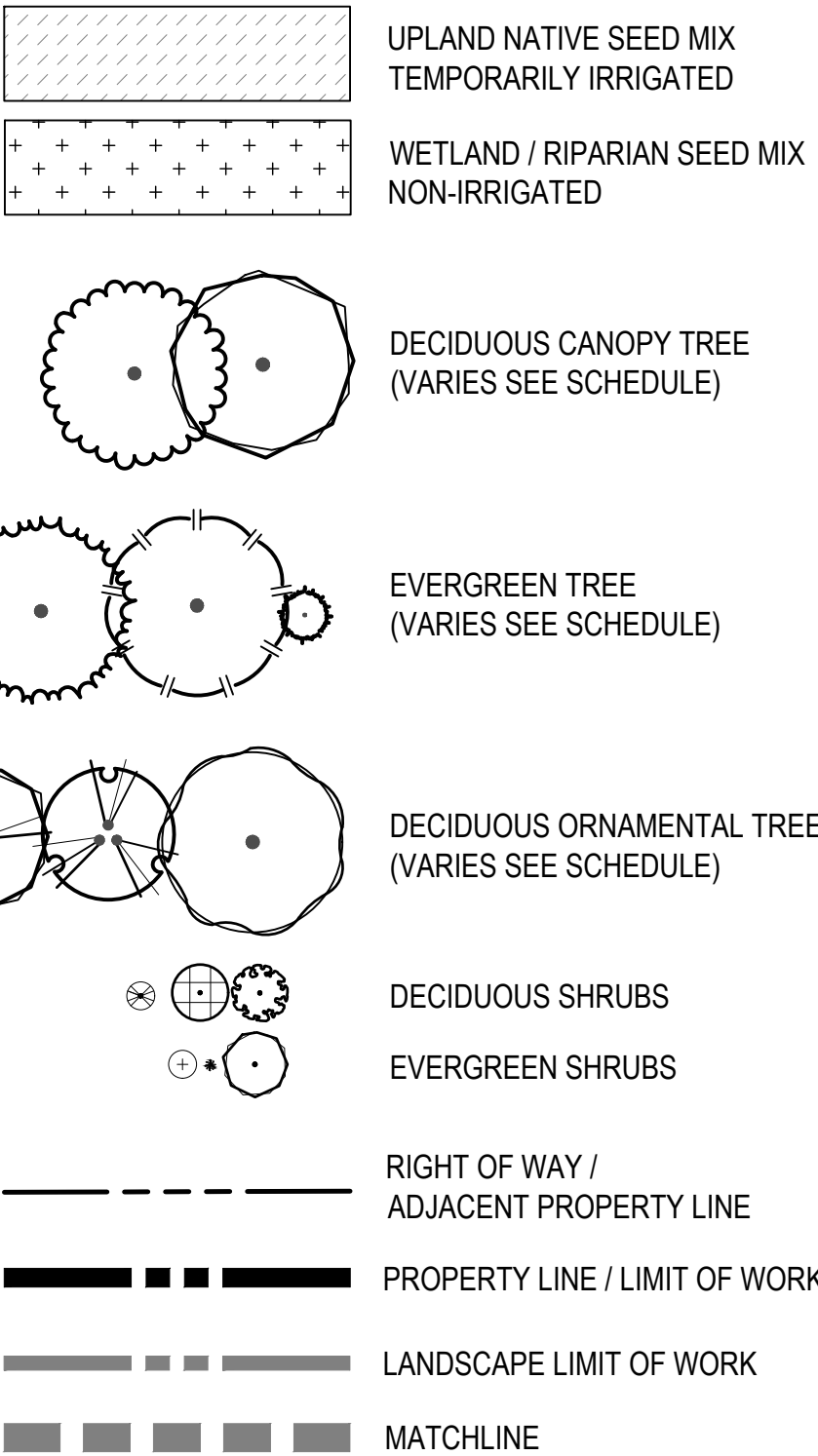
A PARCEL OF LAND LOCATED IN THE WEST HALF OF SECTION 6,  
TOWNSHIP 4 SOUTH, RANGE 65 WEST OF THE 6TH PRINCIPAL MERIDIAN, CITY OF AURORA,  
COUNTY OF ARAPAHOE, STATE OF COLORADO



## KEY MAP



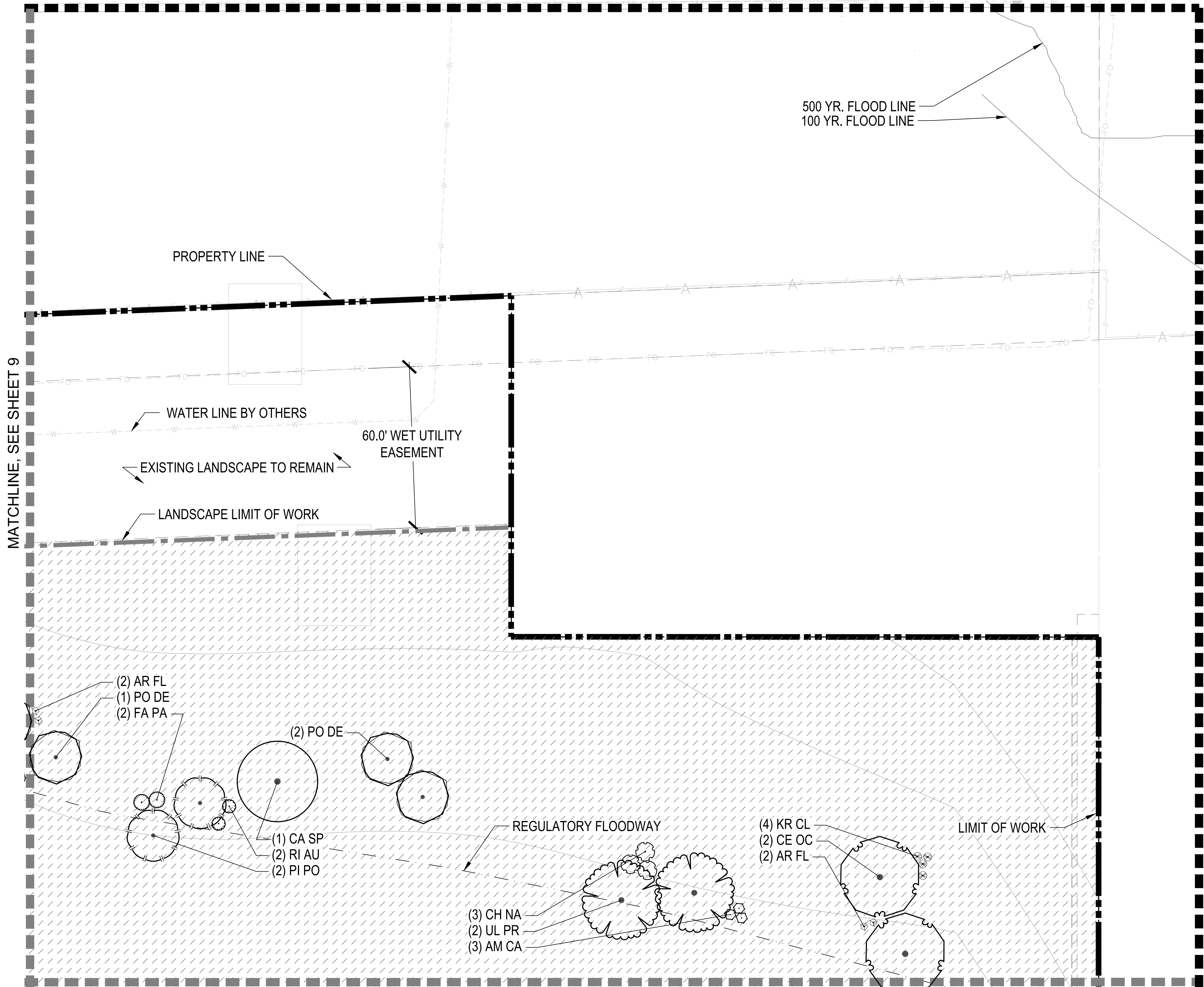
## LEGEND



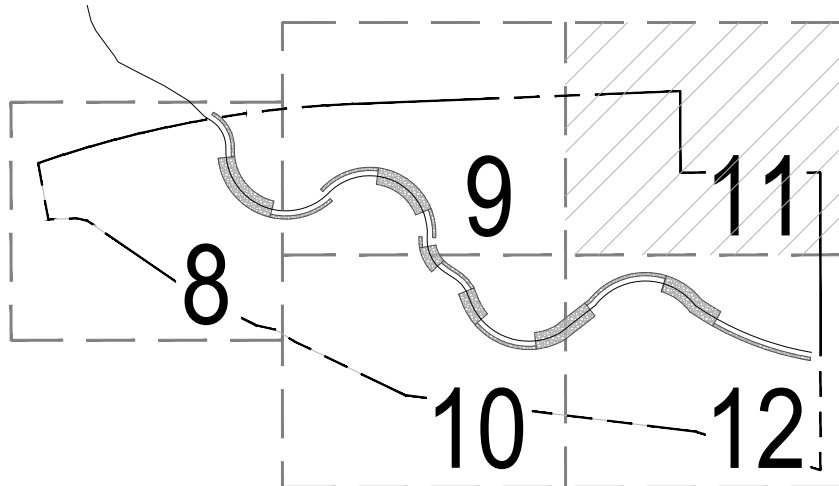


# FIRST CREEK AT AURORA CROSSROADS SUBDIVISION FILING NO. 1 SITE PLAN

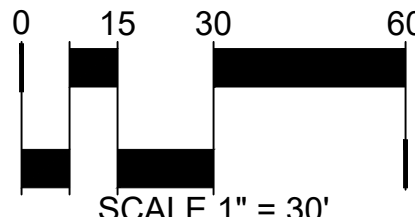
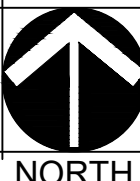
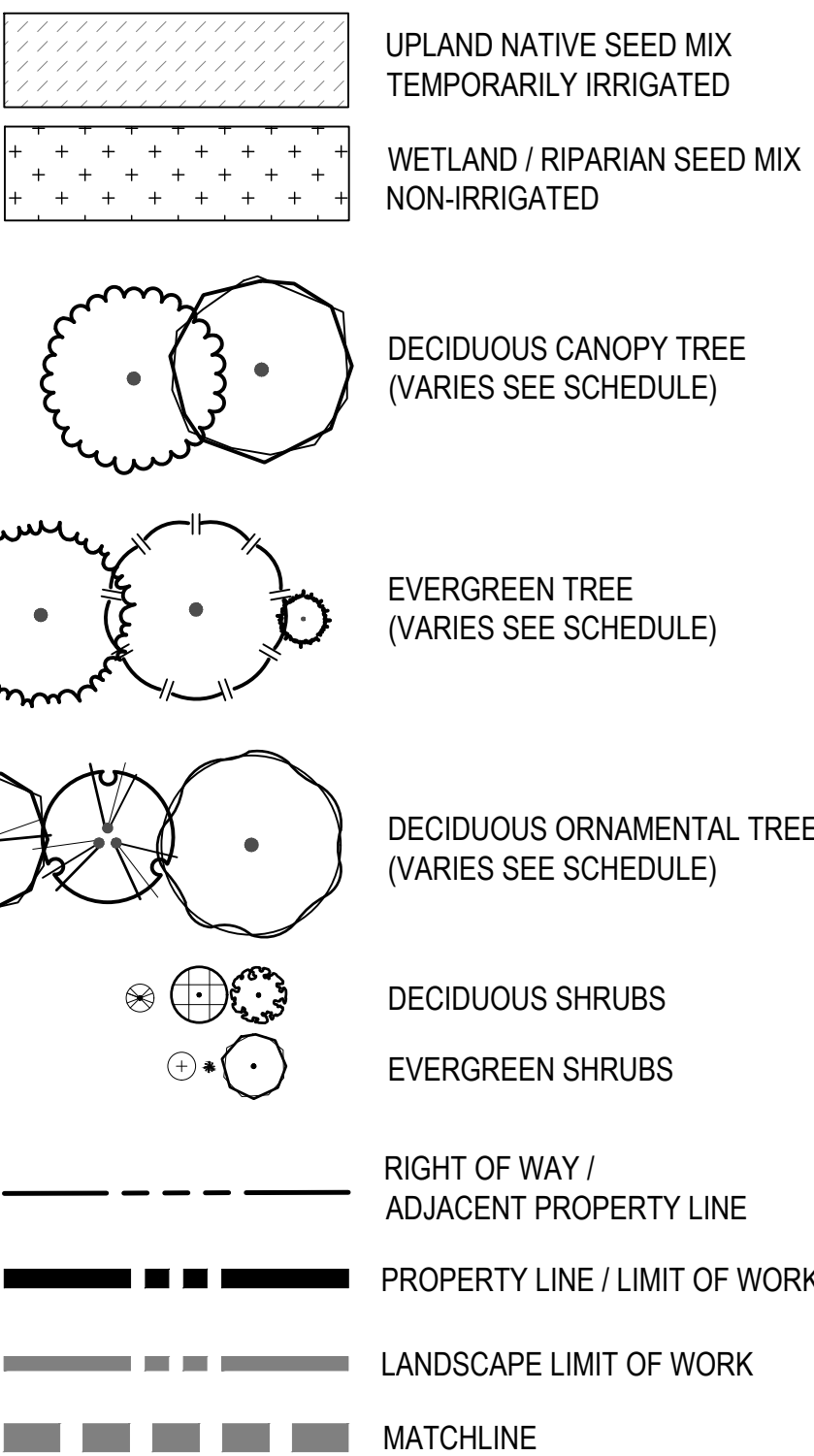
A PARCEL OF LAND LOCATED IN THE WEST HALF OF SECTION 6,  
TOWNSHIP 4 SOUTH, RANGE 65 WEST OF THE 6TH PRINCIPAL MERIDIAN, CITY OF AURORA,  
COUNTY OF ARAPAHOE, STATE OF COLORADO



## KEY MAP



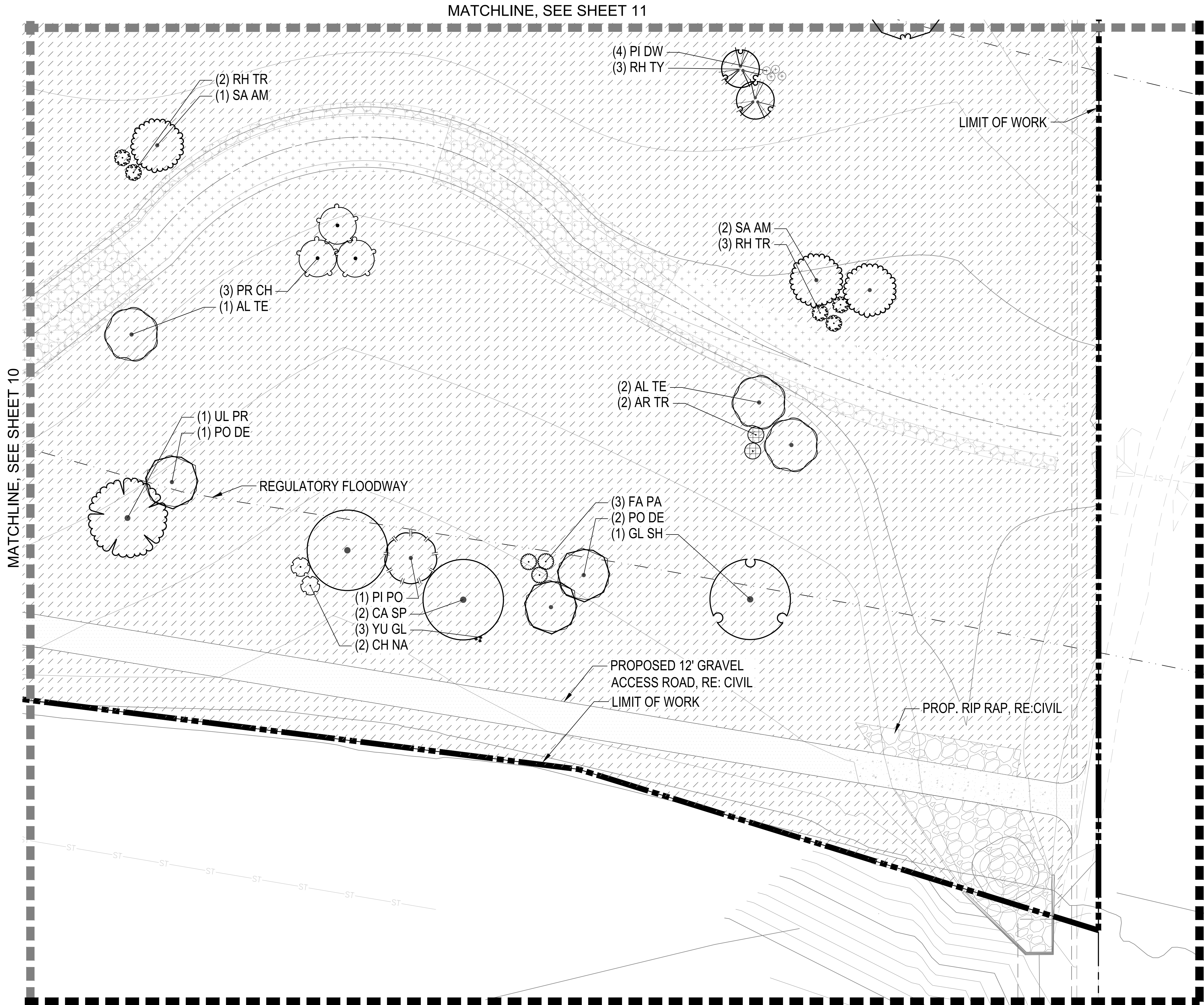
## LEGEND



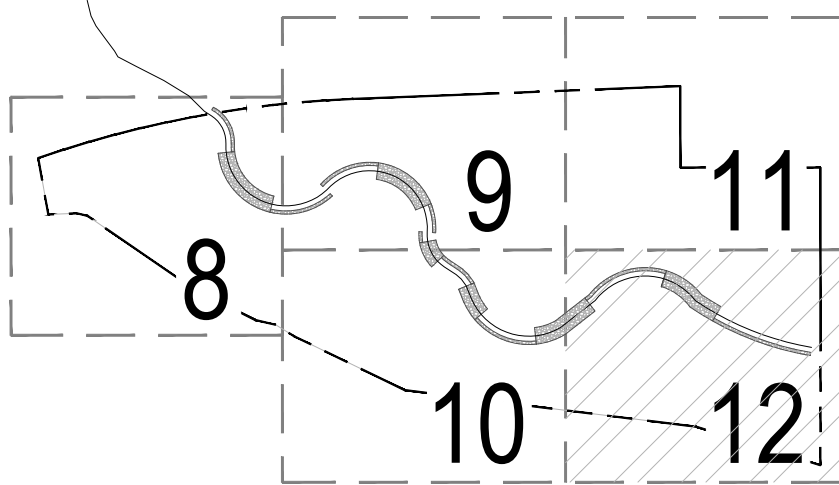


# FIRST CREEK AT AURORA CROSSROADS SUBDIVISION FILING NO. 1 SITE PLAN

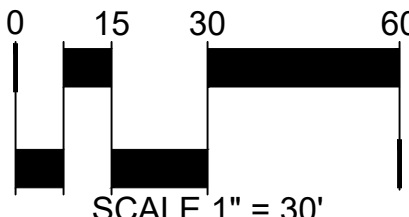
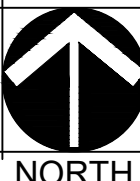
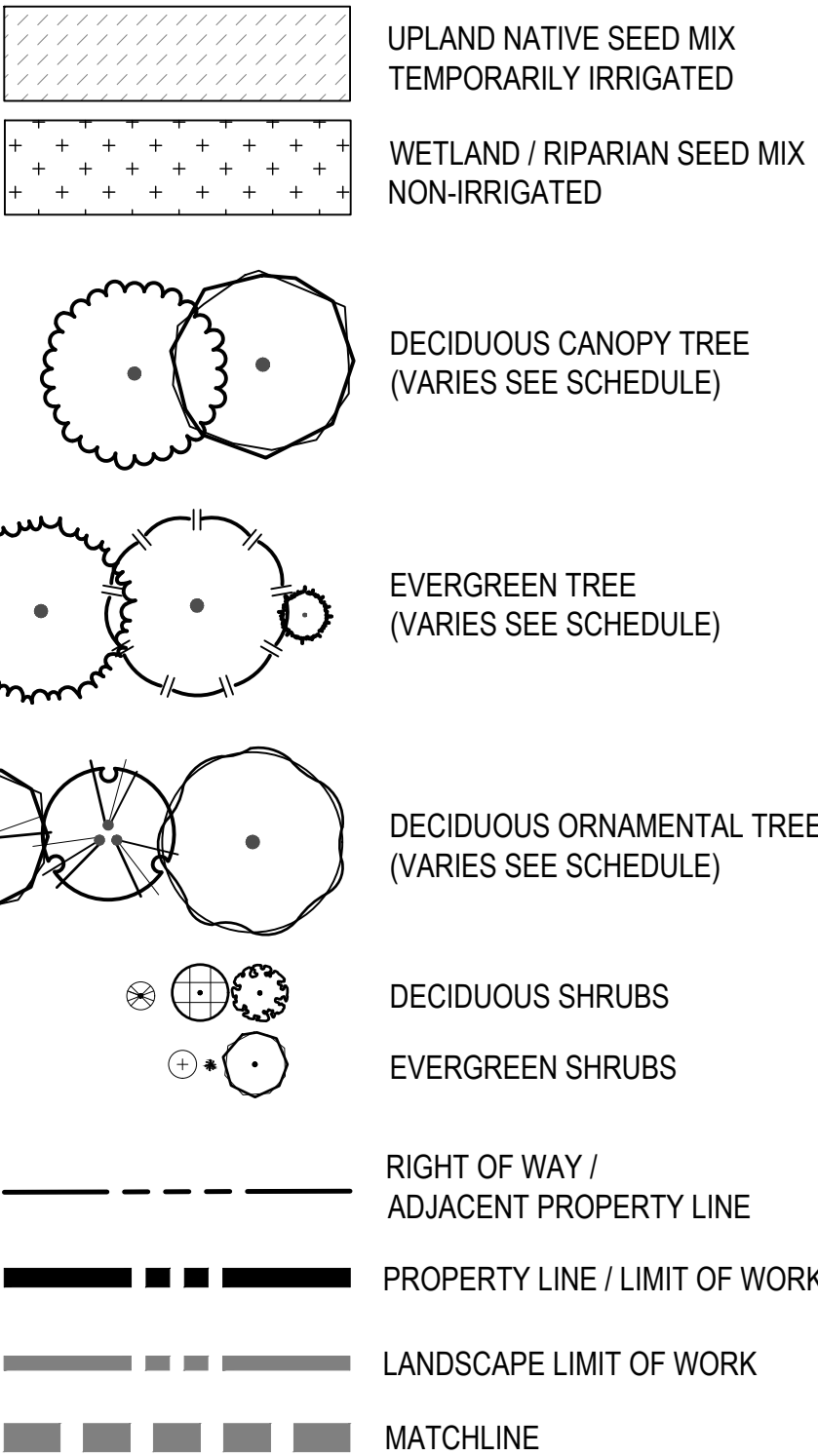
A PARCEL OF LAND LOCATED IN THE WEST HALF OF SECTION 6,  
TOWNSHIP 4 SOUTH, RANGE 65 WEST OF THE 6TH PRINCIPAL MERIDIAN, CITY OF AURORA,  
COUNTY OF ARAPAHOE, STATE OF COLORADO



## KEY MAP



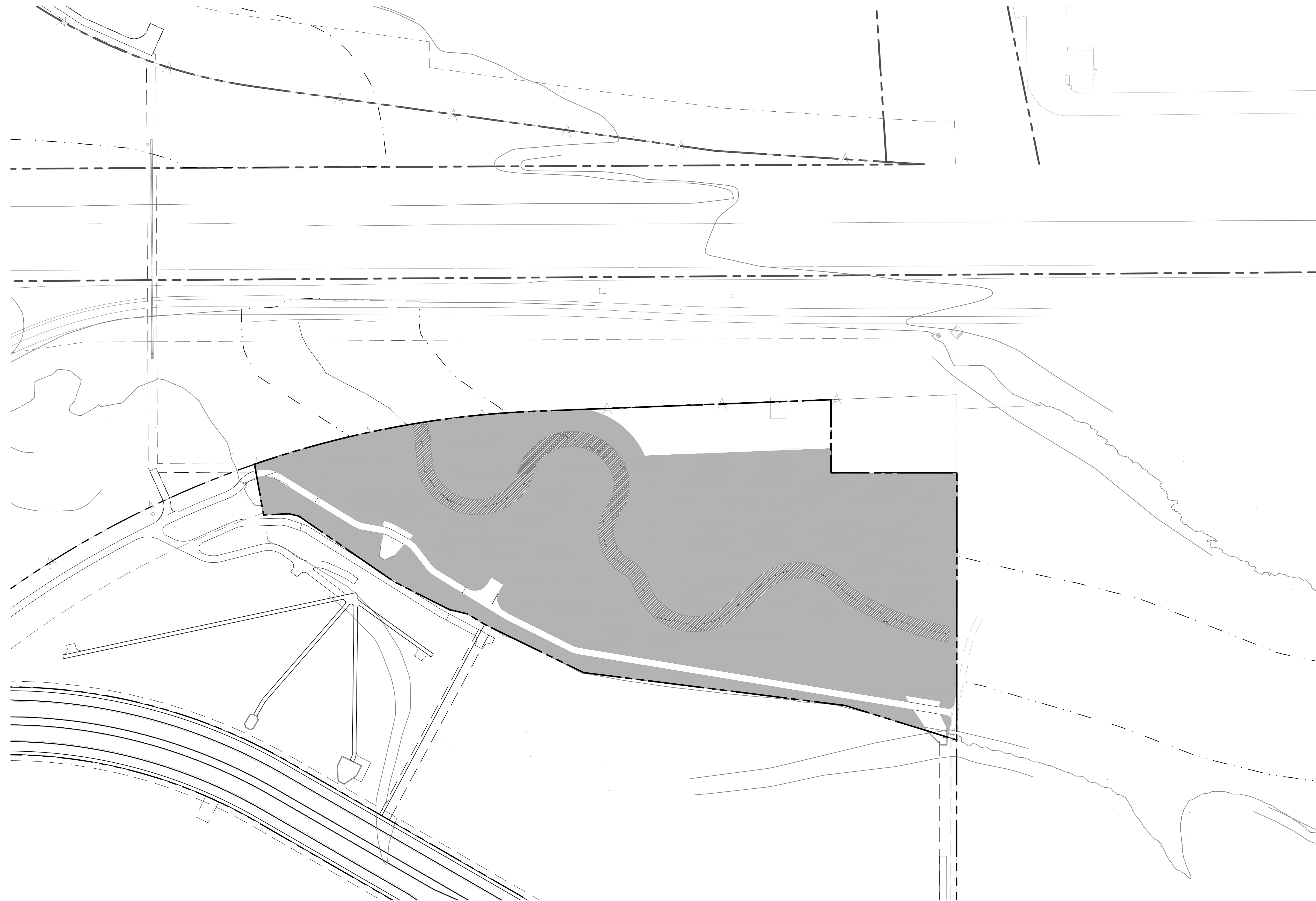
## LEGEND







# FIRST CREEK AT AURORA CROSSROADS SUBDIVISION FILING NO. 1 SITE PLAN

A PARCEL OF LAND LOCATED IN THE WEST HALF OF SECTION 6,  
TOWNSHIP 4 SOUTH, RANGE 65 WEST OF THE 6TH PRINCIPAL MERIDIAN, CITY OF AURORA,  
COUNTY OF ARAPAHOE, STATE OF COLORADO



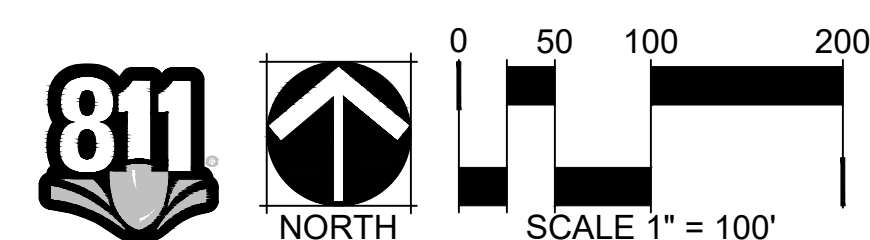
## LEGEND

 Z-ZONE - TEMPORARY IRRIGATED  
NATIVE SEED PER GESC

 LOW WATER USE - NATIVE SEED

## HYDRO-ZONE TABLE

<b>WATER USE TYPE</b>	<b>AREA (SF)</b>	<b>PERCENTAGE (%)</b>
TEMPORARY IRRIGATED NATIVE SEED	382,901 SF	92.7 %
NON-IRRIGATED STREAM CHANNEL BASIN	30,325 SF	7.3 %
TOTAL:	413,226 SF	100 %
<b>TOTAL IRRIGATED AREA TAP #TBD</b>	<b>382,901 SF</b>	

[illegible]

1101 Bannock Street  
Denver, Colorado 80204  
P 303.892.1166  
[www.norris-design.com](http://www.norris-design.com)



# INFRASTRUCTURE SITE PLAN

## FIRST CREEK CHANNEL

### AURORA, COLORADO

Design Project No.  
**19.1522 C05**

Drawing Title

HYDROZONE  
MAP

Drawing No.

13



A PARCEL OF LAND LOCATED IN THE WEST HALF OF SECTION 6,  
TOWNSHIP 4 SOUTH, RANGE 65 WEST OF THE 6TH PRINCIPAL MERIDIAN, CITY OF AURORA,  
COUNTY OF ARAPAHOE, STATE OF COLORADO



MARTIN/MARTIN  
CONSULTING ENGINEERS  
499 WEST COLFAX AVENUE, LAKEWOOD, COLORADO 80215  
3.431.6100 MARTINMARTIN.COM

Drawing No.

