



DEN JAMAICA  
1030 HAVANA ST  
AURORA, CO 80010  
ARAPAHOE COUNTY

Prepared By:  
**RLS**  
RELIANT LAND SERVICES  
3314 W. Grand Avenue  
Englewood, Colorado 80110  
(602) 549-4288

AERIAL MAP



EXISTING



PROPOSED



VIEW 1 - FROM EAST OF NEW STRUCTURE

Accuracy of photo simulation based upon information provided by project applicant. The proposed installation is an artistic representation, and not intended to be an exact reproduction. The final installation will have cables, cable ports, and various attachments, such as antennas, nuts, and bolts. Every effort will be made to disguise these components and they will not be readily apparent to the casual observer or passerby. However, upon close scrutiny, the true nature of the installation will be apparent.

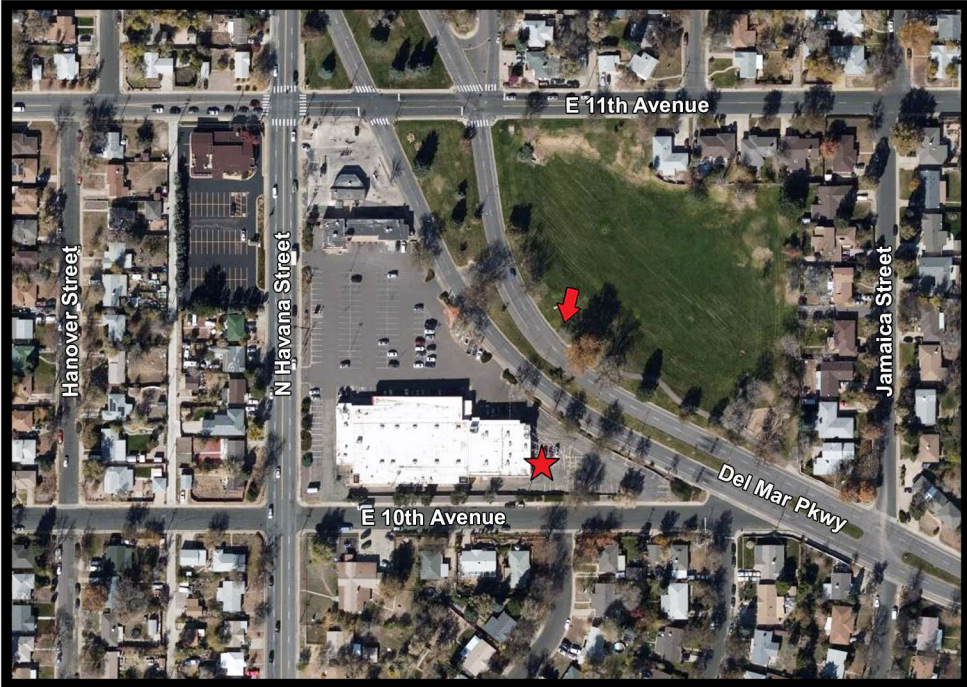




DEN JAMAICA  
1030 HAVANA ST  
AURORA, CO 80010  
ARAPAHOE COUNTY

Prepared By:  
**RLS**  
RELIANT LAND SERVICES  
3314 W. Grand Avenue  
Englewood, Colorado 80110  
(602) 549-4288

AERIAL MAP



EXISTING



PROPOSED



VIEW 2 - FROM NORTH OF NEW STRUCTURE

Accuracy of photo simulation based upon information provided by project applicant. The proposed installation is an artistic representation, and not intended to be an exact reproduction. The final installation will have cables, cable ports, and various attachments, such as antennas, nuts, and bolts. Every effort will be made to disguise these components and they will not be readily apparent to the casual observer or passerby. However, upon close scrutiny, the true nature of the installation will be apparent.

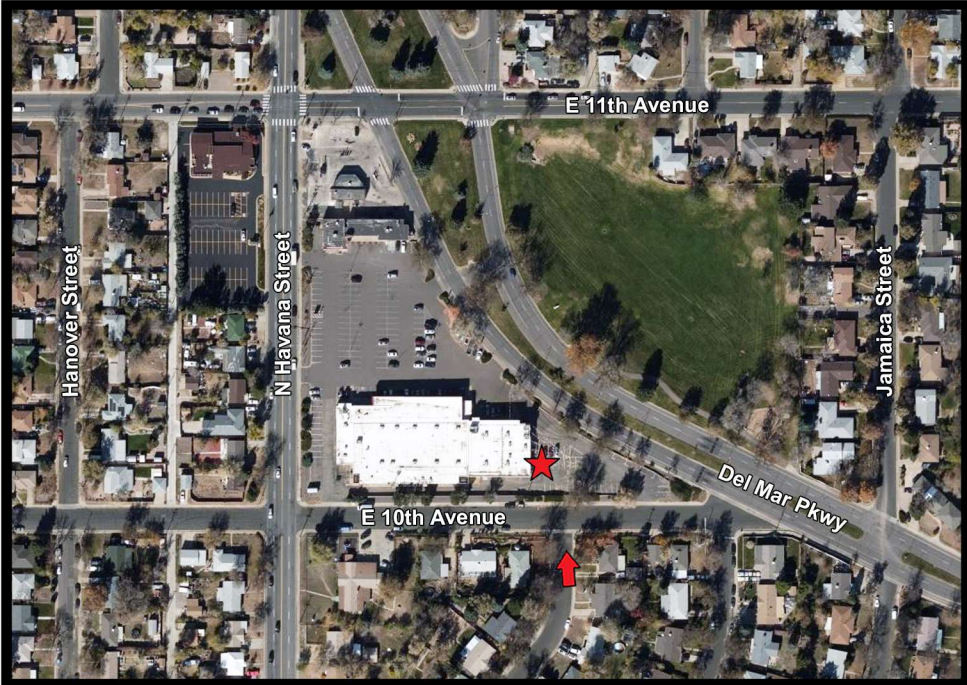




DEN JAMAICA  
1030 HAVANA ST  
AURORA, CO 80010  
ARAPAHOE COUNTY

Prepared By:  
**RLS**  
RELIANT LAND SERVICES  
3314 W. Grand Avenue  
Englewood, Colorado 80110  
(602) 549-4288

AERIAL MAP



EXISTING



PROPOSED



VIEW 3 - FROM SOUTH OF NEW STRUCTURE

Accuracy of photo simulation based upon information provided by project applicant. The proposed installation is an artistic representation, and not intended to be an exact reproduction. The final installation will have cables, cable ports, and various attachments, such as antennas, nuts, and bolts. Every effort will be made to disguise these components and they will not be readily apparent to the casual observer or passerby. However, upon close scrutiny, the true nature of the installation will be apparent.