



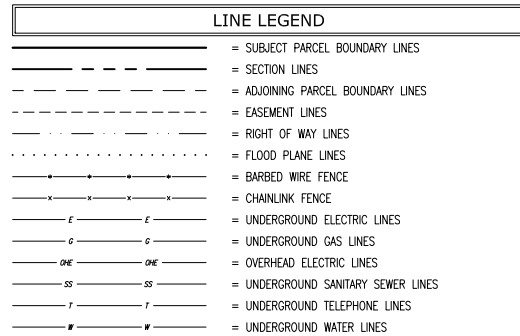
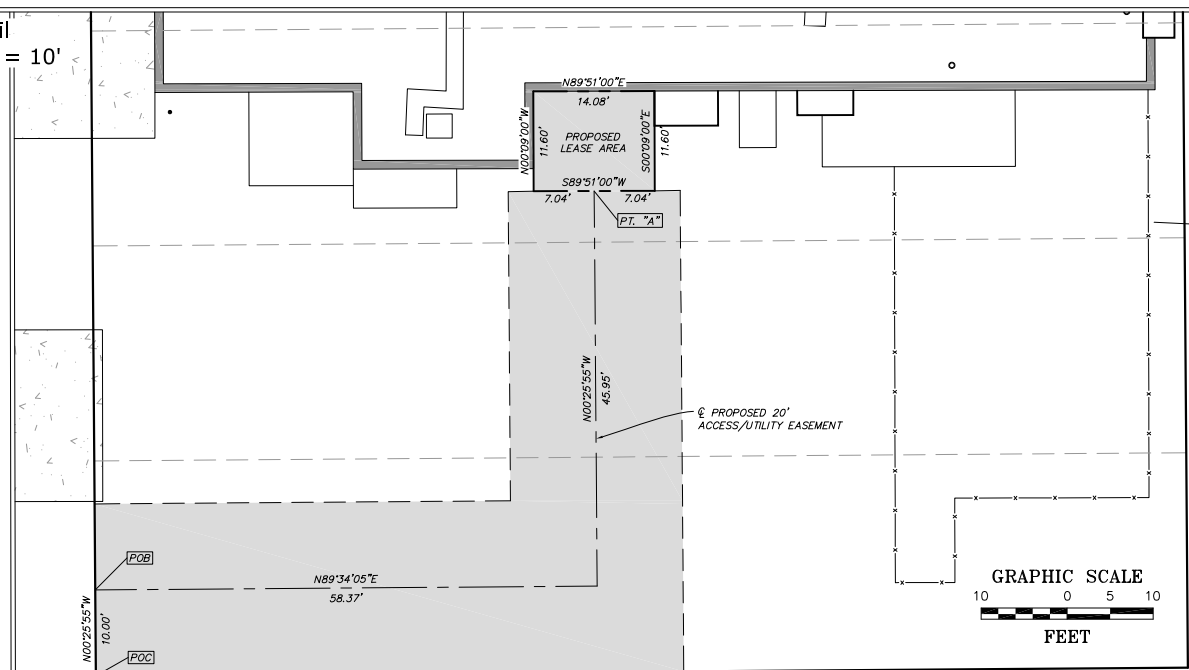
T-MOBILE SITE #: DN01524E
SITE NAME: CENTURYLINK
SITE ADDRESS: 1420 IOLA STREET
AURORA, CO 80012

APPROVAL SIGNATURE BLOCK

THE FOLLOWING PARTIES HAVE REVIEWED THESE DOCUMENTS.
ALL DOCUMENTS ARE SUBJECT TO REVISION BY THE LOCAL ZONING
BUILDING DEPARTMENTS AND MAY IMPOSE CHANGES OR MODIFICATIONS.

<div></div> <div>PROJECT MANAGER (PRINT)</div>	<div></div> <div>PROJECT MANAGER</div>	<div><input type="checkbox"/> APPROVED <input type="checkbox"/> REJECTED</div>	<div></div> <div>DATE</div>
<div></div> <div>RF ENGINEER (PRINT)</div>	<div></div> <div>RF ENGINEER</div>	<div><input type="checkbox"/> APPROVED <input type="checkbox"/> REJECTED</div>	<div></div> <div>DATE</div>
<div></div> <div>SITE ACQUISITION (PRINT)</div>	<div></div> <div>SITE ACQUISITION</div>	<div><input type="checkbox"/> APPROVED <input type="checkbox"/> REJECTED</div>	<div></div> <div>DATE</div>
<div></div> <div>T-MOBILE QUALITY ASSURANCE (PRINT)</div>	<div></div> <div>T-MOBILE QUALITY ASSURANCE</div>	<div><input type="checkbox"/> APPROVED <input type="checkbox"/> REJECTED</div>	<div></div> <div>DATE</div>

Site Detail
Scale: 1" = 10'



ACCESS/UTILITY EASEMENT

BEING A STRIP OF LAND 20.00 FEET IN WIDTH LYING WITHIN A PORTION OF LOTS 22, 23 & 24, BLOCK 15, AURORA, COUNTY OF ARAPAHOE, STATE OF COLORADO, LYING 10.00 FEET ON EACH SIDE OF THE FOLLOWING DESCRIBED CENTERLINE:

SIDELINES OF STRIP OF LAND ARE TO BE LENGTHENED AND/OR SHORTENED TO PREVENT GAPS AND/OR OVERLAPS.

LEASE AREA





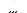

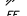

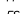

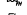
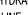
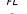
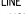

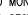

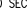




BEING A TELECOMMUNICATIONS LEASE PARCEL LYING WITHIN A PORTION OF LOT 22, BLOCK 15, AURORA, COUNTY OF ARAPAHOE, STATE OF COLORADO, BEING MORE PARTICULARLY DESCRIBED AS FOLLOWS:

BEGINNING AT POINT "A" AS DESCRIBED ABOVE; THENCE S89°51'00"W, 7.04 FEET; THENCE N00°09'00"W, 11.60 FEET; THENCE N89°51'00"E, 14.08 FEET; THENCE S00°09'00"E, 11.60 FEET; THENCE S89°51'00"W, 7.04 FEET TO THE POINT OF BEGINNING.

CONTAINING 163 SQ. FT. OR 0.004 ACRES MORE OR LESS

BURIED UTILITIES AND/OR PIPELINES SHOWN HEREON ARE PER VISIBLE AND APPARENT SURFACE EVIDENCE, RECORD DRAWINGS OF THE CONSTRUCTED UTILITY LINES OBTAINED FROM RELIABLE AND RESPONSIBLE SOURCES NOT CONNECTED WITH ALTRUDA LAND CONSULTANTS, LLC, OR MARKINGS PROVIDED BY AN INDEPENDENT LOCATING CONTRACTOR. NO GUARANTEE OR WARRANTY, EITHER EXPRESSED OR IMPLIED, IS MADE AS TO THE ACCURACY OR THOROUGHNESS OF SUCH INFORMATION. THE EXISTENCE OF ANY UTILITIES OR PIPELINES NOT SHOWN HEREON ARE REQUIRED, THE UTILITY OR PIPELINE WILL HAVE TO BE VERIFIED BY FIELD POT-HOLING. ALTRUDA LAND CONSULTANTS, LLC AND THE SURVEYOR OF RECORD SHALL NOT BE HELD LIABLE FOR THE LOCATION OF OR THE FAILURE TO NOTE THE LOCATION OF NON-VISIBLE UTILITIES OR PIPELINES.

NGS CONTROL POINT "LOWRY ASTRO", ELEVATION = 5451 FEET (NAVD 88)

	CONCRETE PAVEMENT	NG	NATURAL GROUND
	CONIFEROUS TREE	•	PARKING BOLLARD
	DIAMETER	POB	POINT OF BEGINNING
	DECIDUOUS TREE	POC	POINT OF COMMENCEMENT
	EDGE OF ASPHALT		OVERHEAD ELECTRIC LINE
	FINISHED FLOOR		POWER POLE
	FINISH SURFACE	PROPERTY LINE	
	FIRE HYDRANT	R.O.W.	RIGHT OF WAY
	FLOW LINE		SEWER MANHOLE
	FOUND MONUMENT AS NOTED		SIGN POST
	FOUND SECTION MONUMENT		STREET LIGHT STANDARD
	GEOGRAPHIC LOCATION		TELEPHONE PEDESTAL
	GAS METER	TYP	TYPICAL
	IRRIGATION CONTROL VALVE		WATER METER
			WATER VALVE

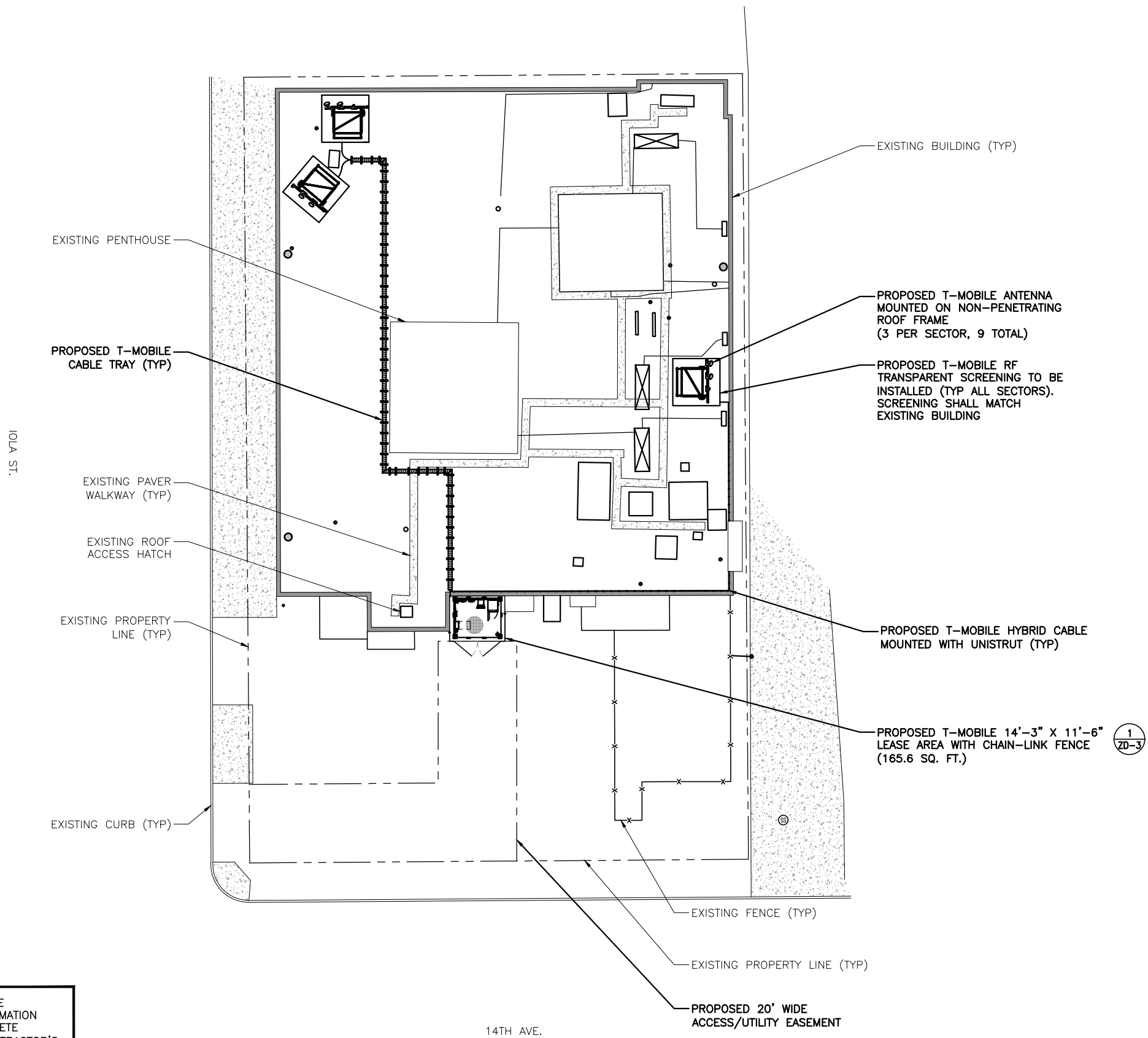
CERTIFICATE OF SURVEY

THIS IS TO CERTIFY THAT THE TOPOGRAPHIC MAP AND IMPROVEMENTS SHOWN ARE ACCURATE TO THE BEST OF MY KNOWLEDGE AND BELIEF.

THIS DOCUMENT DOES NOT REPRESENT AN INSTRUMENTED SURVEY.
REFERENCE SHALL BE MADE TO THE TITLE INSURANCE, NUMBER XXXXXXXXX, ISSUED BY
XX
XX, 2006. THIS SURVEY HAS MADE NO INVESTIGATION OR EFFECTIVE SEARCH FOR EASEMENTS
OF RECORD, ENCUMBRANCES, RESTRICTIVE COVENANTS, OWNERSHIP TITLE EVIDENCE, OR ANY OTHER
FACTS THAT AN ACCURATE AND CURRENT TITLE SEARCH MAY DISCLOSE. THE LESSOR'S LEGAL
DESCRIPTION AND RECORD BOUNDARY ARE SHOWN HEREON FOR REFERENCE ONLY.
THIS SURVEY DOES NOT CONSTITUTE A BOUNDARY SURVEY FOR THE LESSOR'S PROPERTY.



NOTE:
ALL VISIBLE T-MOBILE EQUIPMENT (INCLUDING RF TRANSPARENT WALLS) TO BE PAINTED TO MATCH THE EXISTING BUILDING.



THE UTILITIES AS SHOWN ON THIS SET OF DRAWINGS WERE DEVELOPED FROM THE INFORMATION AVAILABLE. THE INFORMATION PROVIDED IS NOT IMPLIED NOR INTENDED TO BE A COMPLETE INVENTORY OF THE UTILITIES IN THIS AREA. IT IS THE CONTRACTOR'S RESPONSIBILITY TO VERIFY THE LOCATION OF ALL UTILITIES (WHETHER SHOWN OR NOT) AND PROTECT SAID UTILITIES FROM ANY DAMAGE CAUSED BY CONTRACTOR'S ACTIVITIES.

OVERALL SITE PLAN

SCALE: 1" = 15' (24x36)
(OR) 1" = 30' (11x17)

1



T-MOBILE WEST, LLC
18400 E. 22ND AVENUE
AURORA, CO 80011



POWDER RIVER
Engineering Services, LLC
www.powderriverdev.com

LICENSE #: N/A

REVISIONS			
REV	DATE	DESCRIPTION	INT
A	08/02/17	ISSUED FOR REVIEW 90%	BCM

PRELIMINARY
NOT FOR
CONSTRUCTION

THESE PLANS AND SPECIFICATIONS, AS INSTRUMENTS OF SERVICE, ARE AND SHALL REMAIN THE PROPERTY OF POWDER RIVER DEVELOPMENT SERVICES, LLC WHETHER THE PROJECTS FOR WHICH THEY ARE MADE ARE EXECUTED OR NOT. THESE DRAWINGS AND SPECIFICATIONS SHALL NOT BE USED BY ANY PERSON OR ENTITY ON OTHER PROJECTS WITHOUT PRIOR WRITTEN CONSENT OF THE ENGINEER.

SITE INFORMATION

DN01524E

CENTURYLINK

1420 IOLA STREET
AURORA, CO 80012

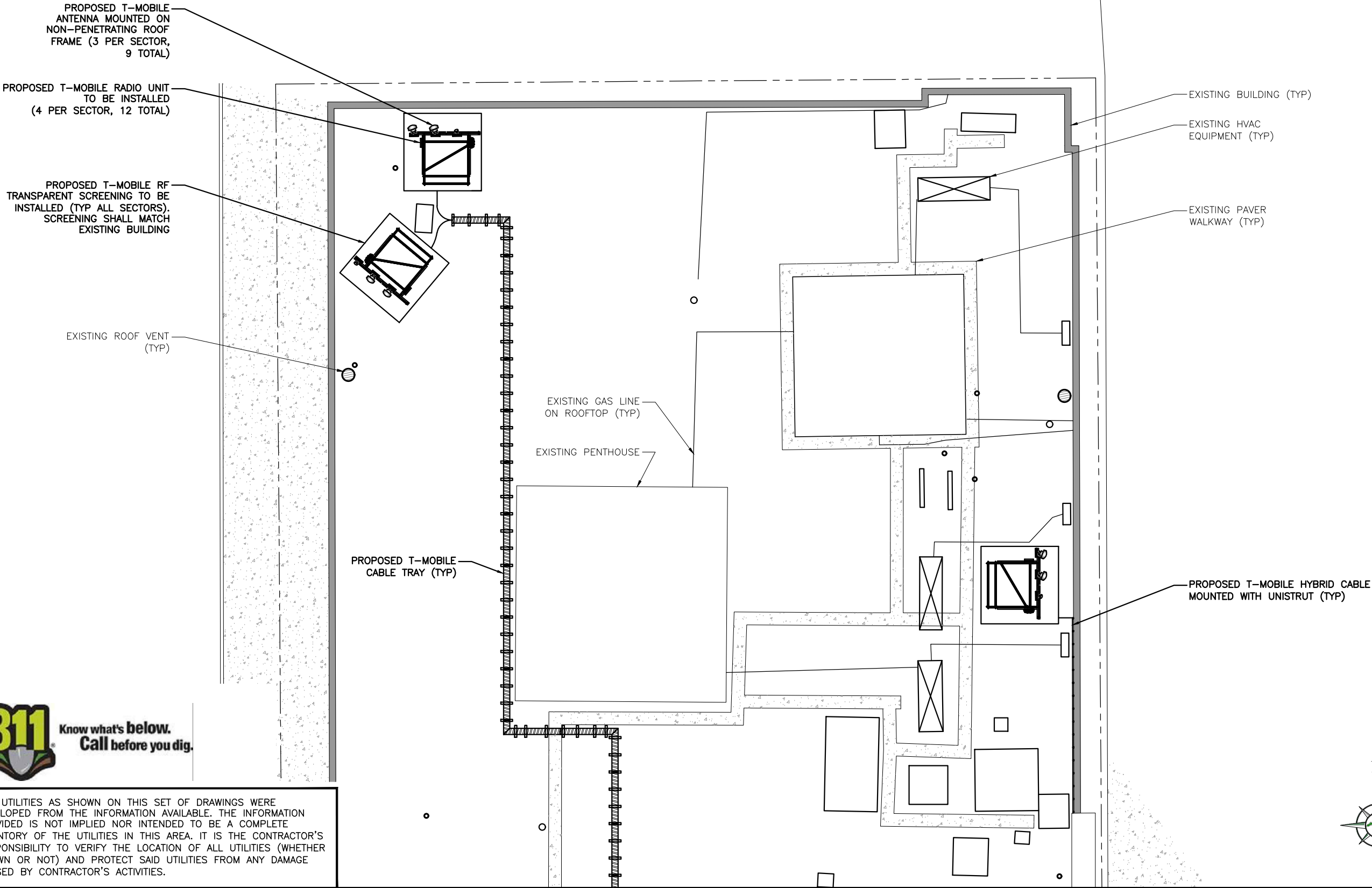
SHEET TITLE:

OVERALL
SITE PLAN

SHEET NUMBER:

ZD-1

NOTE:
ALL VISIBLE T-MOBILE EQUIPMENT (INCLUDING RF TRANSPARENT WALLS) TO BE PAINTED TO MATCH THE EXISTING BUILDING.



THE UTILITIES AS SHOWN ON THIS SET OF DRAWINGS WERE DEVELOPED FROM THE INFORMATION AVAILABLE. THE INFORMATION PROVIDED IS NOT IMPLIED NOR INTENDED TO BE A COMPLETE INVENTORY OF THE UTILITIES IN THIS AREA. IT IS THE CONTRACTOR'S RESPONSIBILITY TO VERIFY THE LOCATION OF ALL UTILITIES (WHETHER SHOWN OR NOT) AND PROTECT SAID UTILITIES FROM ANY DAMAGE CAUSED BY CONTRACTOR'S ACTIVITIES.



8" 0 4' 8" SCALE: 1/8" = 1'-0" (24x36)
(OR) 1/16" = 1'-0" (11x17)



T-MOBILE WEST, LLC
18400 E. 22ND AVENUE
AURORA, CO 80011



POWDER RIVER
Engineering Services, LLC
www.powderriverdev.com

LICENSE #: N/A

REVISIONS			
REV	DATE	DESCRIPTION	INT
A	08/02/17	ISSUED FOR REVIEW 90%	BCM

PRELIMINARY
NOT FOR
CONSTRUCTION

THESE PLANS AND SPECIFICATIONS, AS INSTRUMENTS OF SERVICE, ARE AND SHALL REMAIN THE PROPERTY OF POWDER RIVER DEVELOPMENT SERVICES, LLC WHETHER THE PROJECTS FOR WHICH THEY ARE MADE ARE EXECUTED OR NOT. THESE DRAWINGS AND SPECIFICATIONS SHALL NOT BE USED BY ANY PERSON OR ENTITY ON OTHER PROJECTS WITHOUT PRIOR WRITTEN CONSENT OF THE ENGINEER.

SITE INFORMATION

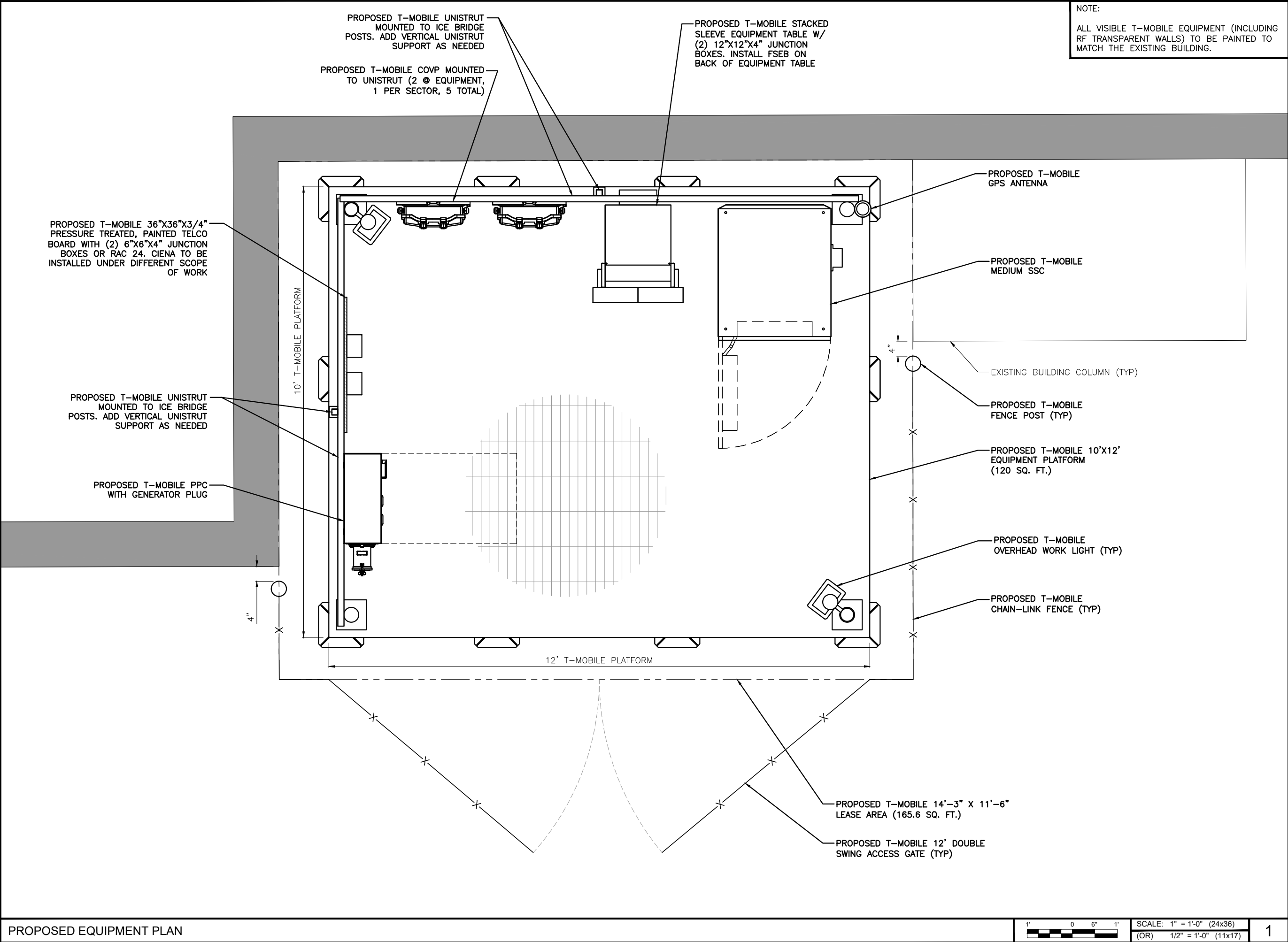
DN01524E

CENTURYLINK

1420 IOLA STREET
AURORA, CO 80012

SHEET TITLE:
ENLARGED
SITE PLAN

SHEET NUMBER:
ZD-2



NOTE:
ALL VISIBLE T-MOBILE EQUIPMENT (INCLUDING RF TRANSPARENT WALLS) TO BE PAINTED TO MATCH THE EXISTING BUILDING.

T-Mobile
T-MOBILE WEST, LLC
18400 E. 22ND AVENUE
AURORA, CO 80011

POWDER RIVER
Engineering Services, LLC
www.powderriverdev.com

LICENSE #:			N/A
REVISIONS			
V	DATE	DESCRIPTION	INT
	08/02/17	ISSUED FOR REVIEW 90%	BCM

PRELIMINARY
NOT FOR
CONSTRUCTION

THESE PLANS AND SPECIFICATIONS, AS INSTRUMENTS OF SERVICE, ARE AND SHALL REMAIN THE PROPERTY OF POWDER RIVER DEVELOPMENT SERVICES, LLC WHETHER THE PROJECTS FOR WHICH THEY ARE MADE ARE EXECUTED OR NOT. THESE DRAWINGS AND SPECIFICATIONS SHALL NOT BE USED BY ANY PERSON OR ENTITY ON OTHER PROJECTS WITHOUT PRIOR WRITTEN CONSENT OF THE ENGINEER.

SITE INFORMATION

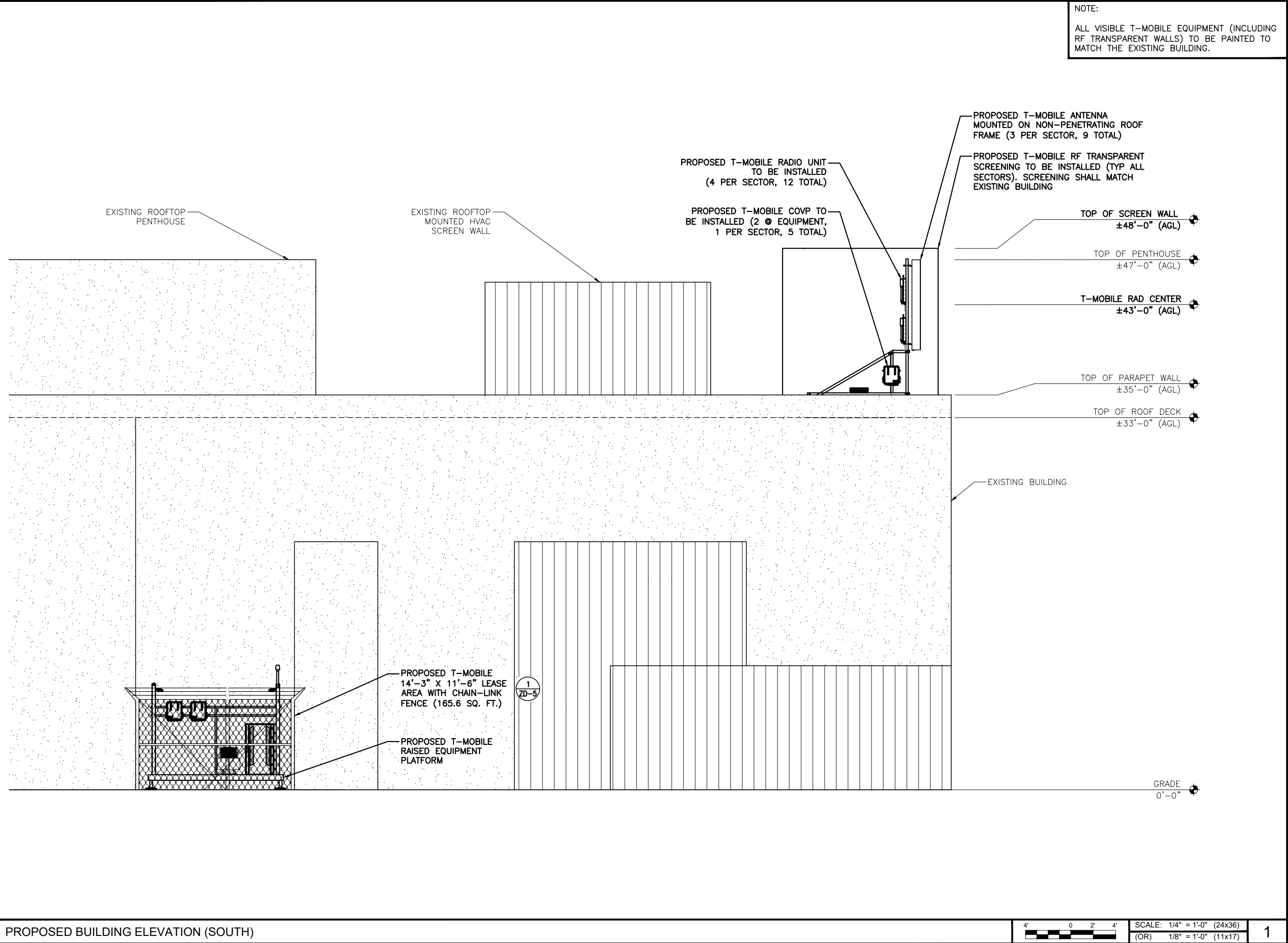
DN01524E

CENTURYLINK

**1420 IOLA STREET
AURORA, CO 80012**

SHEET TITLE:
EQUIPMENT PLAN

SHEET NUMBER:
ZD-3



T-MOBILE WEST, LLC
18400 E. 22ND AVENUE
AURORA, CO 80011



POWDER RIVER
Engineering Services, LLC
www.powderriverdev.com

LICENSE #: N/A

REVISIONS			
REV	DATE	DESCRIPTION	INT
A	08/02/17	ISSUED FOR REVIEW 90%	BCM

PRELIMINARY
NOT FOR
CONSTRUCTION

THESE PLANS AND SPECIFICATIONS, AS INSTRUMENTS OF SERVICE, ARE AND SHALL REMAIN THE PROPERTY OF POWDER RIVER DEVELOPMENT SERVICES, LLC WHETHER THE PROJECTS FOR WHICH THEY ARE MADE ARE EXECUTED OR NOT. THESE DRAWINGS AND SPECIFICATIONS SHALL NOT BE USED BY ANY PERSON OR ENTITY ON OTHER PROJECTS WITHOUT PRIOR WRITTEN CONSENT OF THE ENGINEER.

SITE INFORMATION

DN01524E

CENTURYLINK

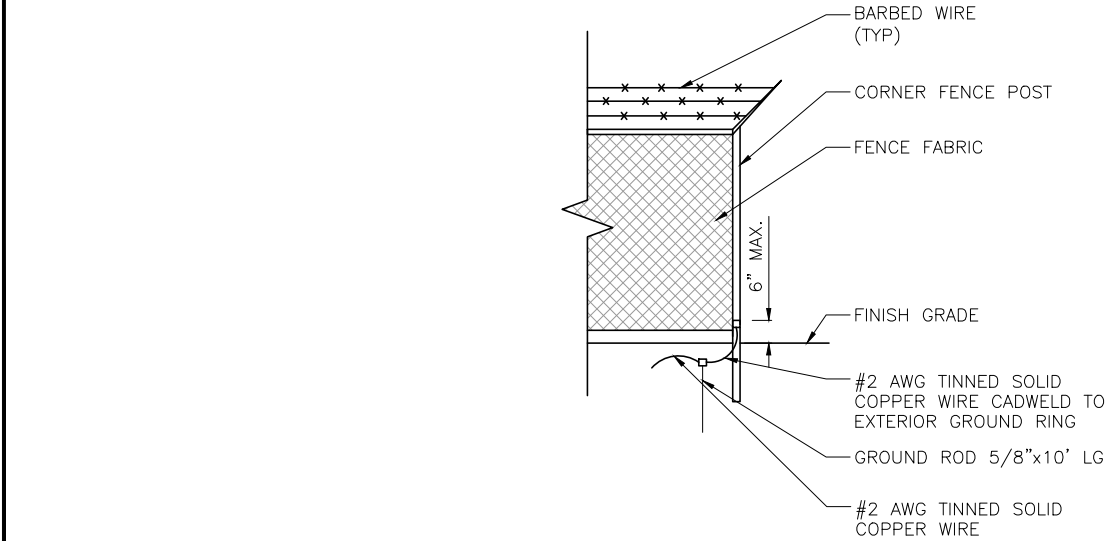
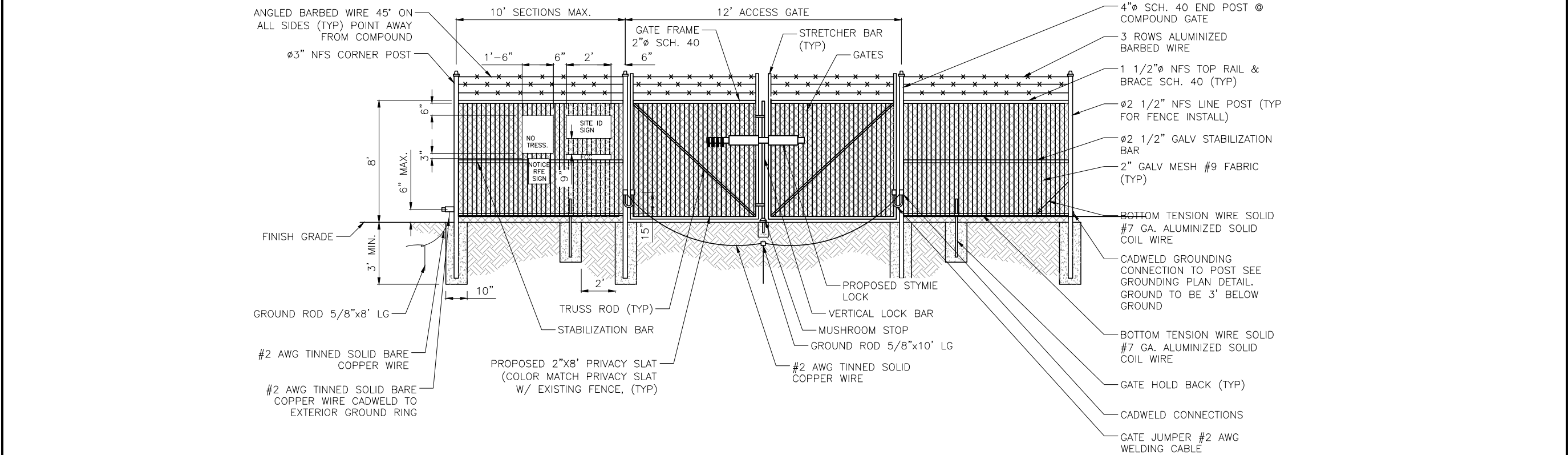
1420 IOLA STREET
AURORA, CO 80012

SHEET TITLE:

BUILDING
ELEVATION

SHEET NUMBER:

ZD-4



CHAIN LINK FENCE TABLE		
COMPONENT	DIMENSIONS	HARDWARE AND FEATURES
FENCE FABRIC	6' HIGH, 9 GA., 2"x2" ZINC COATED MESH	SELVEDGE TOP AND BOTTOM
BARBED WIRE	BARBED WIRE WITH FOUR (4) POINT BARBS	THREE (3) RUNS
EXTENSION ARM	STAMPED STEEL WITH MALLEABLE IRON BASE	45 DEGREE, ANGLE OUTWARD
END AND CORNER POSTS	3" STD. GA. (SCH 40) PIPE	36"x12" CONCRETE FOOTING
LINE POSTS	2" STD. GA. (SCH 40) PIPE	36"x10" CONCRETE FOOTING, REF NOTE 3
DRIVEWAY GATE POSTS	4" STD. GA. (SCH 40) PIPE	48"x12" CONCRETE FOOTING
WALKWAY GATE POSTS	3" STD. GA. (SCH 40) PIPE	36"x12" CONCRETE FOOTING
TOP RAILS	1 1/2" STD. GA. (SCH 40) PIPE	ATTACHED WITH PROPER FITTING
MID RAILS	1 1/2" STD. GA. (SCH 40) PIPE	ATTACHED WITH PROPER FITTING
BRACE RODS	3/8" CARBON STEEL	ATTACHED WITH PROPER FITTING
BOTTOM TENSION WIRE	7 GA. 1900 LB. TENSILE STRENGTH	ALL SIDES
TENSION BARS	3/16" x 3/4" FULL HEIGHT OF FRABRIC	SPACE TENSION BANDS AT 15" +/- O.C.
TENSION WIRE	9 GA. ALUMINUM	12" O.C. FOR LINE POSTS AND GATES 24" O.C. FOR RAILS AND TENSION WIRES
GATE FRAME	2" STD. GA. (SCH 40) PIPE	WELDED ASSEMBLY (COLD GA. AND SILVER PAINT WELDED AREAS)
POST CAPS	PER POST DIAMETER	ALL POSTS
POST, RAIL AND GATE FITTINGS	AS REQUIRED	STAMPED STEEL OR MALLEABLE CASTING
GATE HINGES	AS REQUIRED	OFFSET TYPE WITH 180 DEGREE SWING
DOUBLE GATE LATCH	AS REQUIRED	DUCKBILL LATCH ON ACTIVE LEAF, DROP BOLTS ON BOTH LEAVES
GATE STOPS (CLOSED POSITION)	AS REQUIRED	MUSHROOM STOP SET IN CONCRETE
GATE STOPS (OPEN POSITION)	AS REQUIRED	AS REQUIRED
LOCK CHAIN	3/8" SIZE, 36" LONG	HOT DIPPED GALVANIZED OR VINYL COATED
NOTES: 1. ABOVE INFORMATION SHOWN FOR REFERENCE ONLY. ACTUAL ENGINEERING OF FENCE SYSTEM SHALL BE COORDINATED WITH FENCE MANUFACTURER, CONTRACTOR & VENDOR. 2. ALL FENCE MATERIALS TO BE HOT-DIPPED GALVANIZED UNO. 3. CONTRACTOR MAY USE 36"x12" CONCRETE LINE POST FOOTINGS IN LIEU OF 36"x10". 4. DRILLED PIER FOOTING CONCRETE, f'c OF 3000 PSI MIN. 5. BRACING RODS TO BE TENSIONED PER INDUSTRY STANDARDS.		

TYPICAL CHAIN-LINK FENCE DETAIL



T-MOBILE WEST, LLC
18400 E. 22ND AVENUE
AURORA, CO 80011



POWDER RIVER
Engineering Services, LLC
www.powderriverdev.com

LICENSE #:			N/A
REVISIONS			
REV	DATE	DESCRIPTION	INT
A	08/02/17	ISSUED FOR REVIEW 90%	BCM

PRELIMINARY
NOT FOR
CONSTRUCTION

THESE PLANS AND SPECIFICATIONS, AS INSTRUMENTS OF SERVICE, ARE AND SHALL REMAIN THE PROPERTY OF POWDER RIVER DEVELOPMENT SERVICES, LLC WHETHER THE PROJECTS FOR WHICH THEY ARE MADE ARE EXECUTED OR NOT. THESE DRAWINGS AND SPECIFICATIONS SHALL NOT BE USED BY ANY PERSON OR ENTITY ON OTHER PROJECTS WITHOUT PRIOR WRITTEN CONSENT OF THE ENGINEER.

SITE INFORMATION

DN01524E

CENTURYLINK

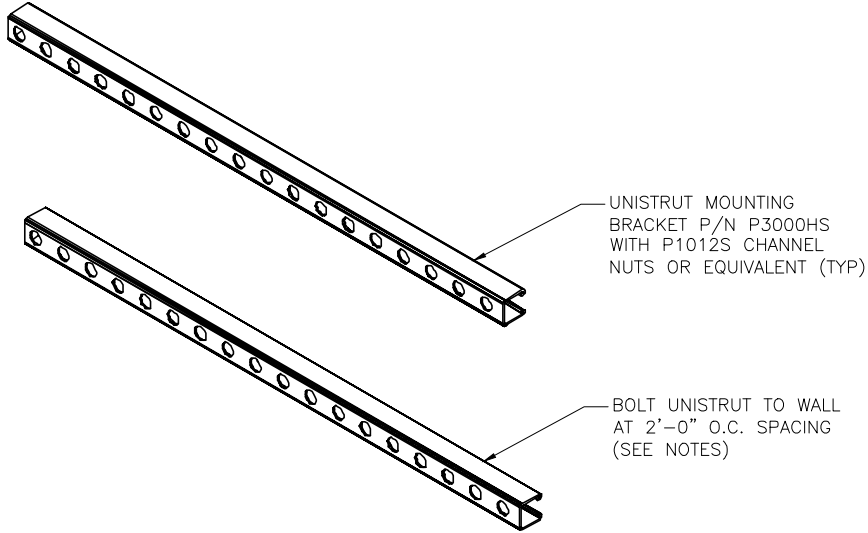
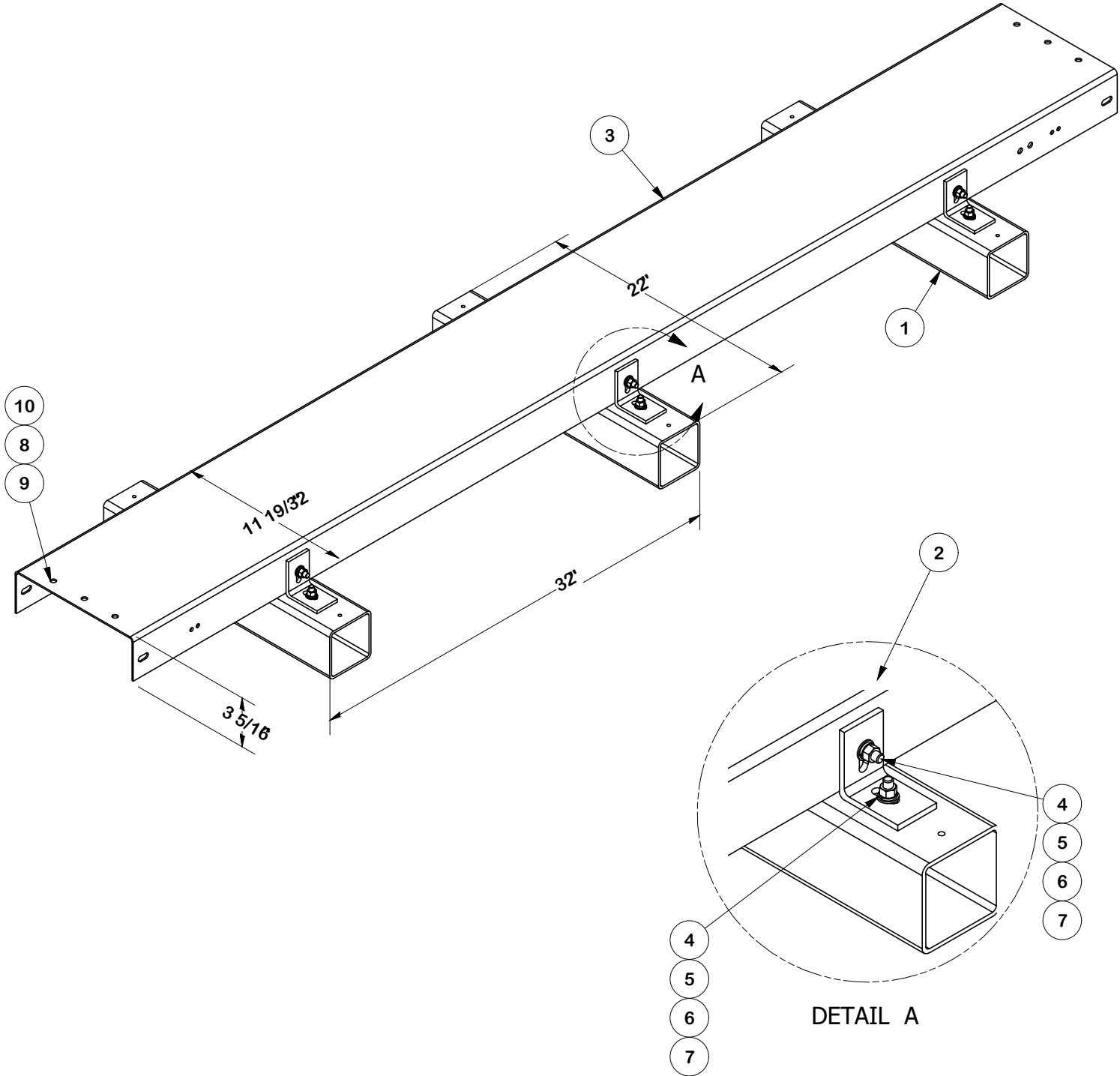
1420 IOLA STREET
AURORA, CO 80012

SHEET TITLE:
CONSTRUCTION
DETAILS

SHEET NUMBER:

ZD-5

PARTS LIST						
ITEM	QTY	PART NO.	PART DESCRIPTION	LENGTH	UNIT WT.	NET WT.
1	3	SLPR4	PVC ROOFTOP SLEEPER	22 in	2.10	6.29
2	6	RCCLIP	ROOFTOP COVER CLIP ANGLE		0.36	2.14
3	1	X-SP1542	4 RUN ROOFTOP COVER		47.77	47.77
4	12	G38114	3/8" x 1-1/4" HDG HEX BOLT GR5		0.06	0.75
5	18	G38FW	3/8" HDG USS FLATWASHER		0.01	0.21
6	12	G38LW	3/8" HDG LOCKWASHER		0.01	0.08
7	12	G38NUT	3/8" HDG HEAVY 2H HEX NUT		0.03	0.41
8	3	RN38	RETAINING NUT 3/8" X 1-1/4"		0.04	0.12
9	3	SS38114	SS 3/8" X 1-1/4" BOLT	1 1/4 in	0.06	0.18
10	3	SS38FW	3/8" STAINLESS FLATWASHER		0.01	0.03
TOTAL WT. #						57.98



- NOTES:
- CONCRETE
ANCHOR: HILTI HIT HY 150 ADHESIVE ANCHOR
SIZE: $\phi = 3/8"$
EMBEDMENT: 1 3/4"
SPACING: S = 24" (MAX)
* IF THE WALL THICKNESS IS LESS THAN 2", THE 1/2" ϕ A325 BOLT SHALL BE USED TO GO THROUGH THE WALL WITH A 3/8" BACK PLATE INSIDE OF THE WALL.
 - FULLY-GROUTED CMU WALL
ANCHOR: HILTI HIT HY 150 ADHESIVE ANCHOR
SIZE: $\phi = 3/8"$
EMBEDMENT: 1 3/4"
SPACING: ONE (1) ANCHOR PER CELL (MAX) AND 8" (MIN)
 - SOLID BRICK WALL
ANCHOR: HILTI HIT HY 20 ADHESIVE ANCHOR
SIZE: $\phi = 3/8"$
EMBEDMENT: 2"
SPACING: S = 24" (MAX)
 - HOLLOW, UNGROUTED CMU WALL & BRICK WALL WITH HOLES
ANCHOR: HILTI HIT HY 20 ADHESIVE ANCHOR
SIZE: $\phi = 3/8"$
EMBEDMENT: THROUGH FACE OF HOLLOW BASE $\geq 6"$ (MIN)
SPACING: S = (2) COMPLETE BRICKS IN ANY DIRECTION
(1) ANCHOR PER BLOCK CELL (CMU)
 - STEEL
BOLT: A325
BOLT SIZE: $\phi = 1/2"$
BOLT HOLE SIZE: $\phi = 9/16"$
 - IF THE WALL MATERIAL IS DIFFERENT FROM ABOVE, CONTRACTOR SHALL INFORM DESIGN ENGINEER IMMEDIATELY.
 - ALL HARDWARE AND PARTS SHALL BE HOT-DIPPED GALVANIZED WITH LOCK WASHERS AND HEAVY HEX NUTS.
 - ALL BOLT HOLES SHALL BE 7/16" ϕ UNLESS NOTED OTHERWISE.
 - THE MAX LOAD BETWEEN ANCHORS SHALL BE LESS THAN 400 POUNDS.

CABLE TRAY DETAIL

SCALE:
NTS

2

TYPICAL UNISTRUT WALL MOUNTING DETAIL

SCALE:
NTS

1

T-Mobile

T-MOBILE WEST, LLC
18400 E. 22ND AVENUE
AURORA, CO 80011



LICENSE #: N/A

REVISIONS			
REV	DATE	DESCRIPTION	INT
A	08/02/17	ISSUED FOR REVIEW 90%	BCM

PRELIMINARY
NOT FOR
CONSTRUCTION

THESE PLANS AND SPECIFICATIONS, AS INSTRUMENTS OF SERVICE, ARE AND SHALL REMAIN THE PROPERTY OF POWDER RIVER DEVELOPMENT SERVICES, LLC WHETHER THE PROJECTS FOR WHICH THEY ARE MADE ARE EXECUTED OR NOT. THESE DRAWINGS AND SPECIFICATIONS SHALL NOT BE USED BY ANY PERSON OR ENTITY ON OTHER PROJECTS WITHOUT PRIOR WRITTEN CONSENT OF THE ENGINEER.

SITE INFORMATION

DN01524E

CENTURYLINK

1420 IOLA STREET
AURORA, CO 80012

SHEET TITLE:
CONSTRUCTION
DETAILS

SHEET NUMBER:

ZD-6