



Clark, Richardson and Biskup
Consulting Engineers, Inc.

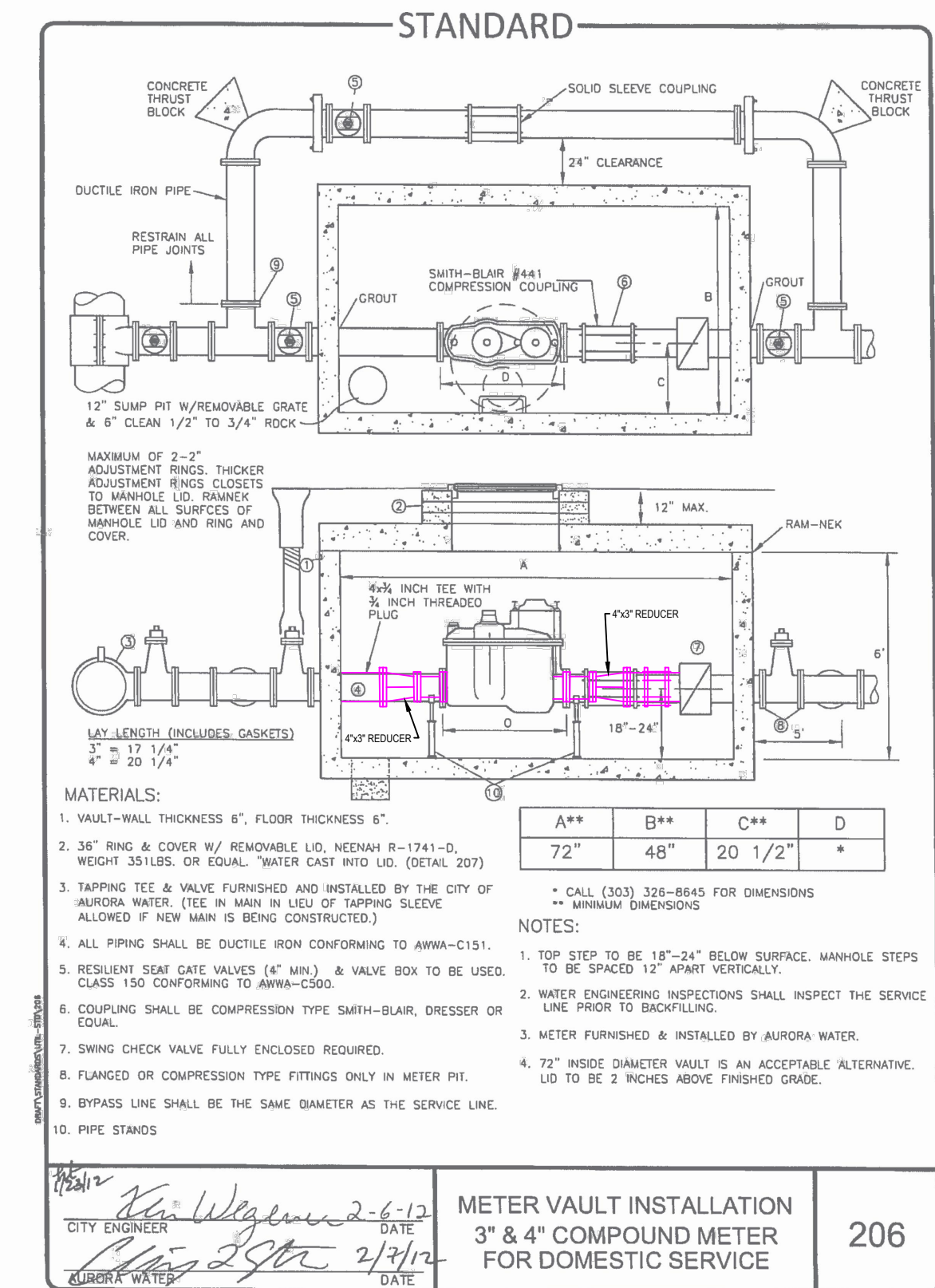
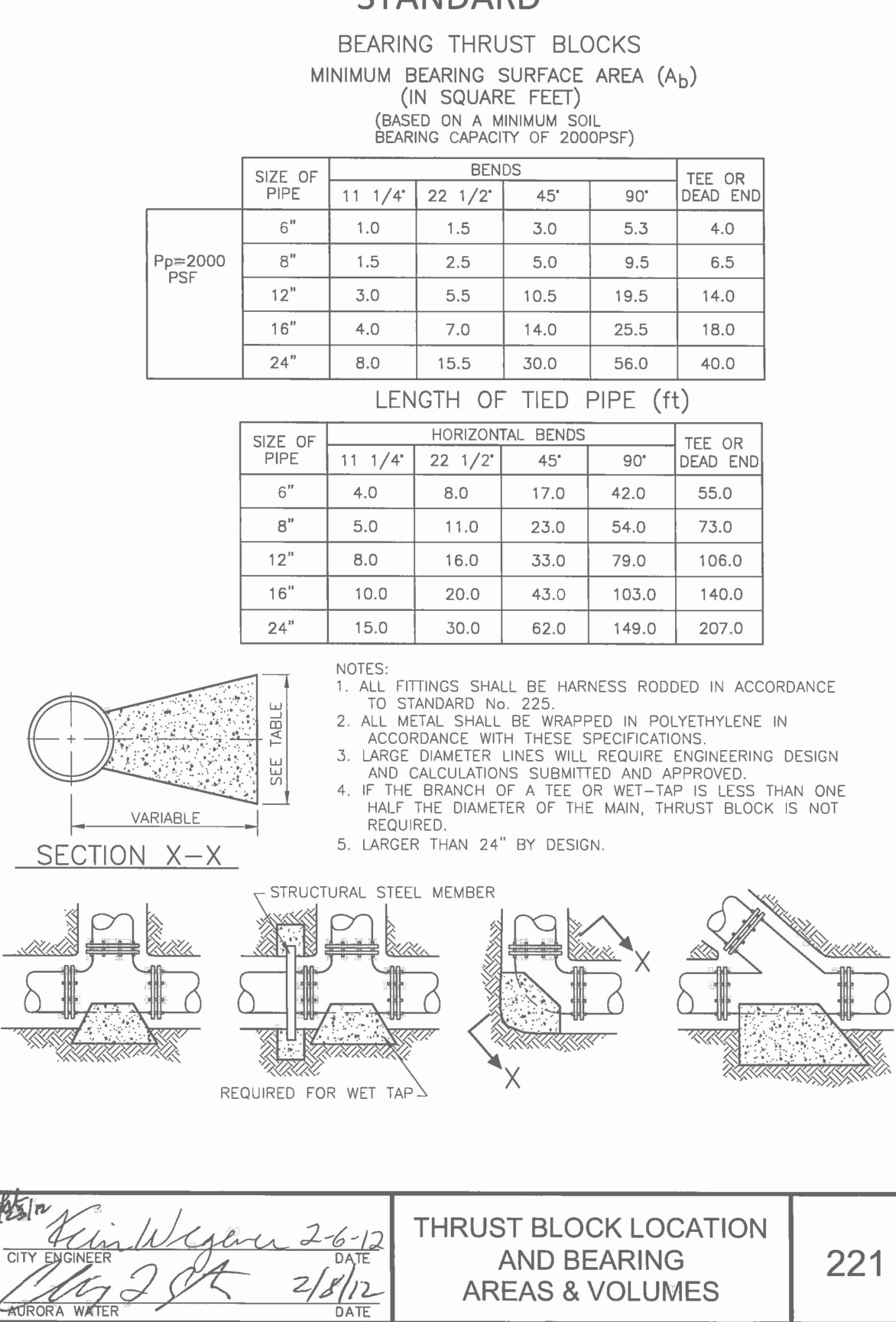
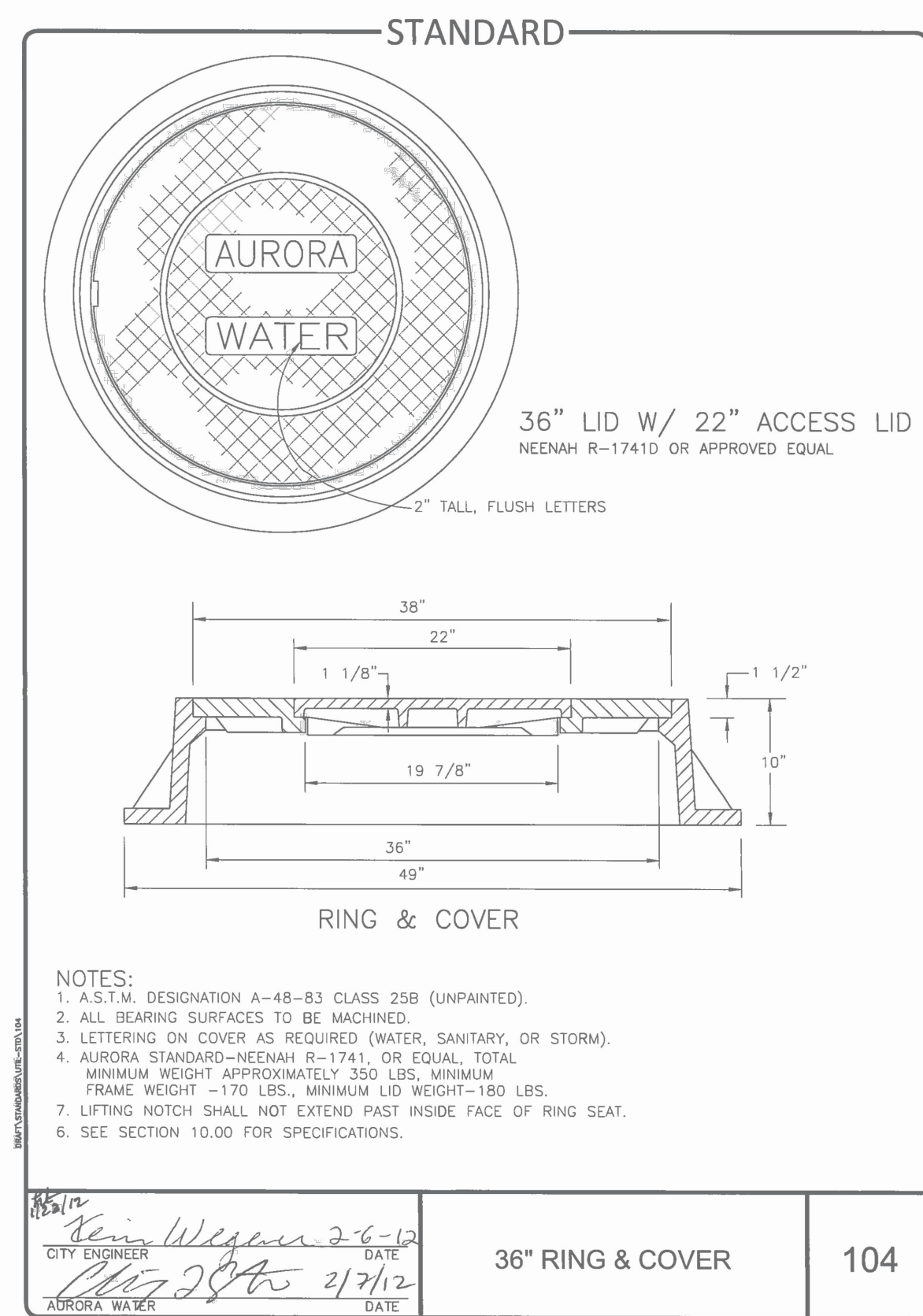
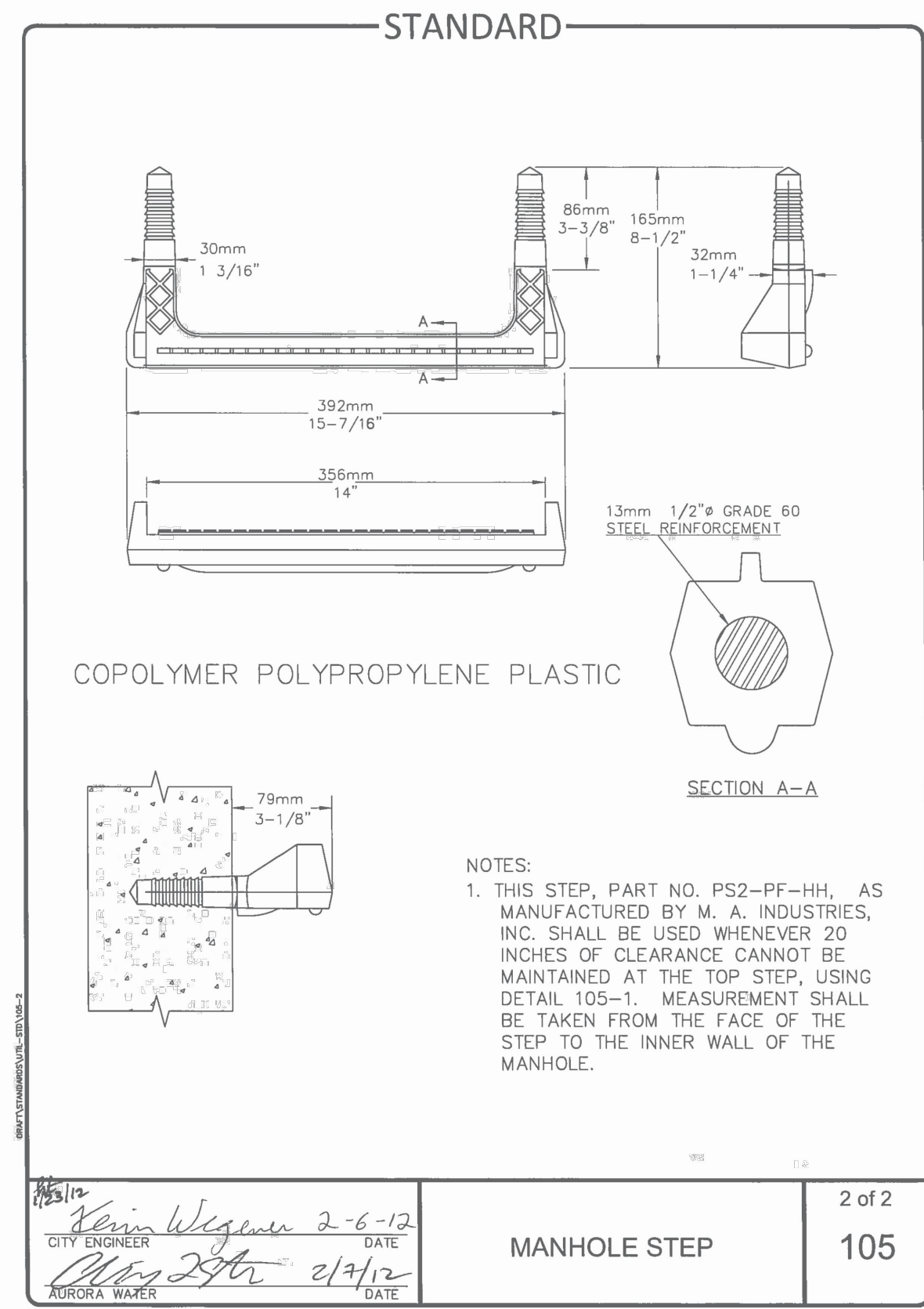
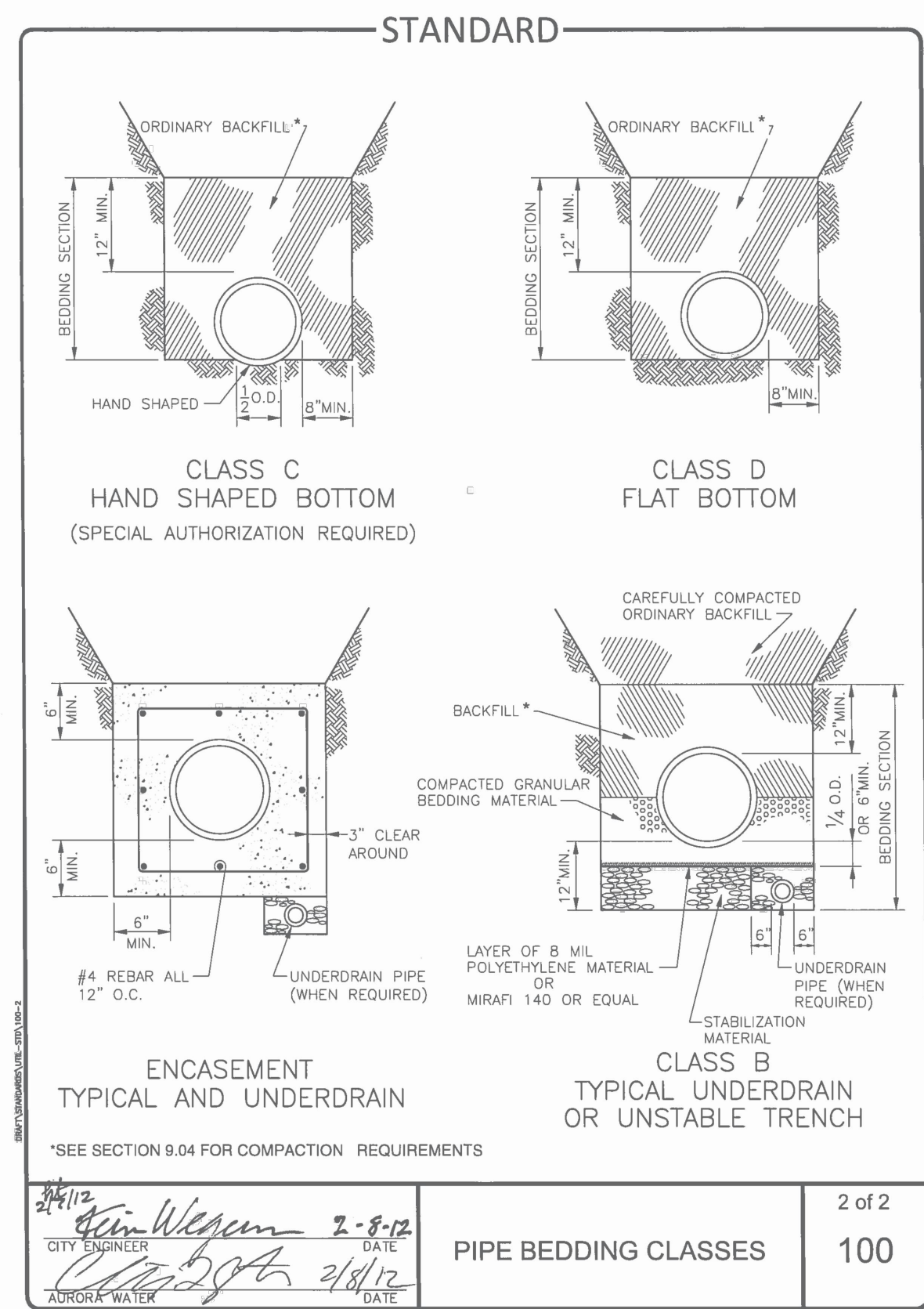
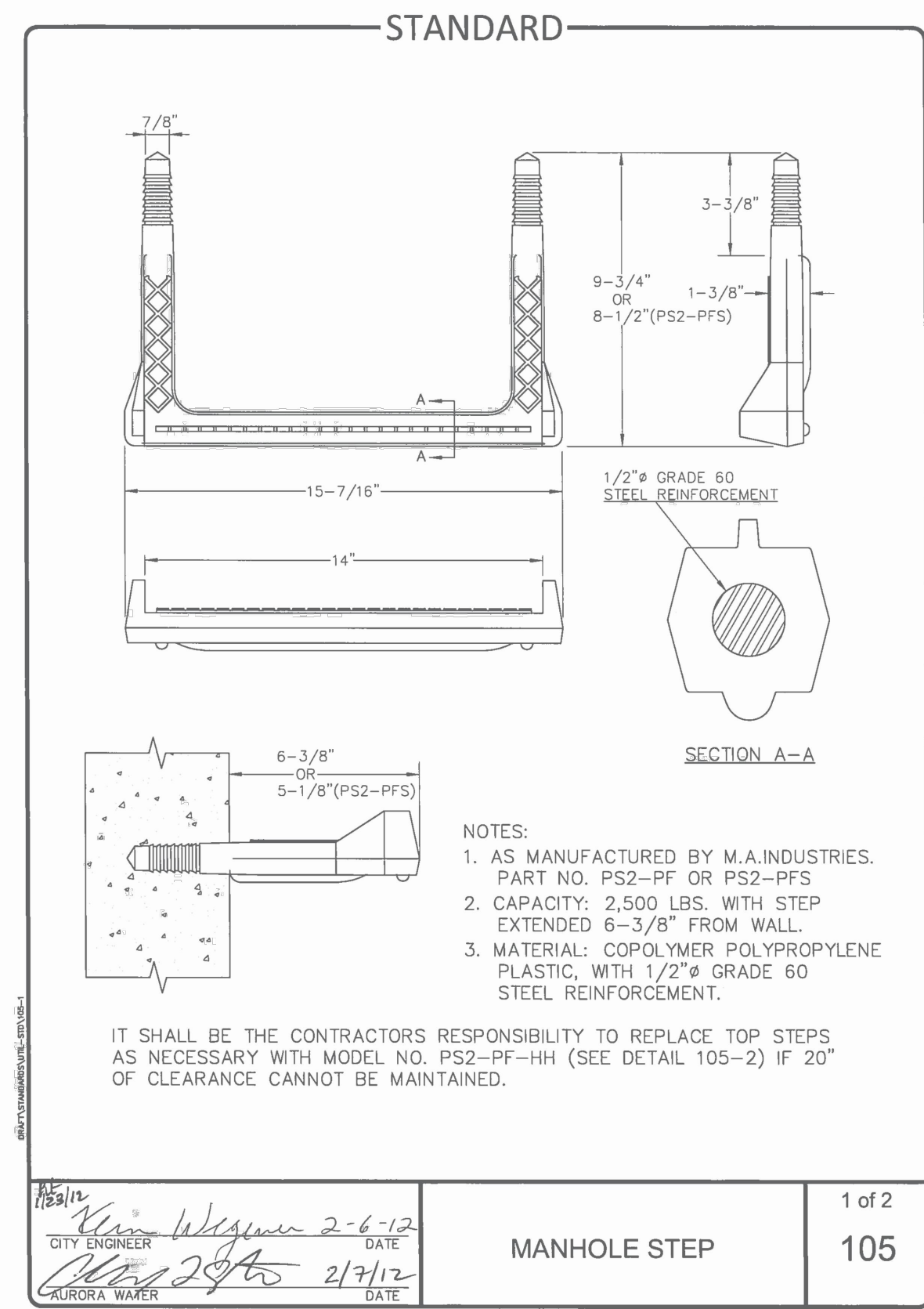
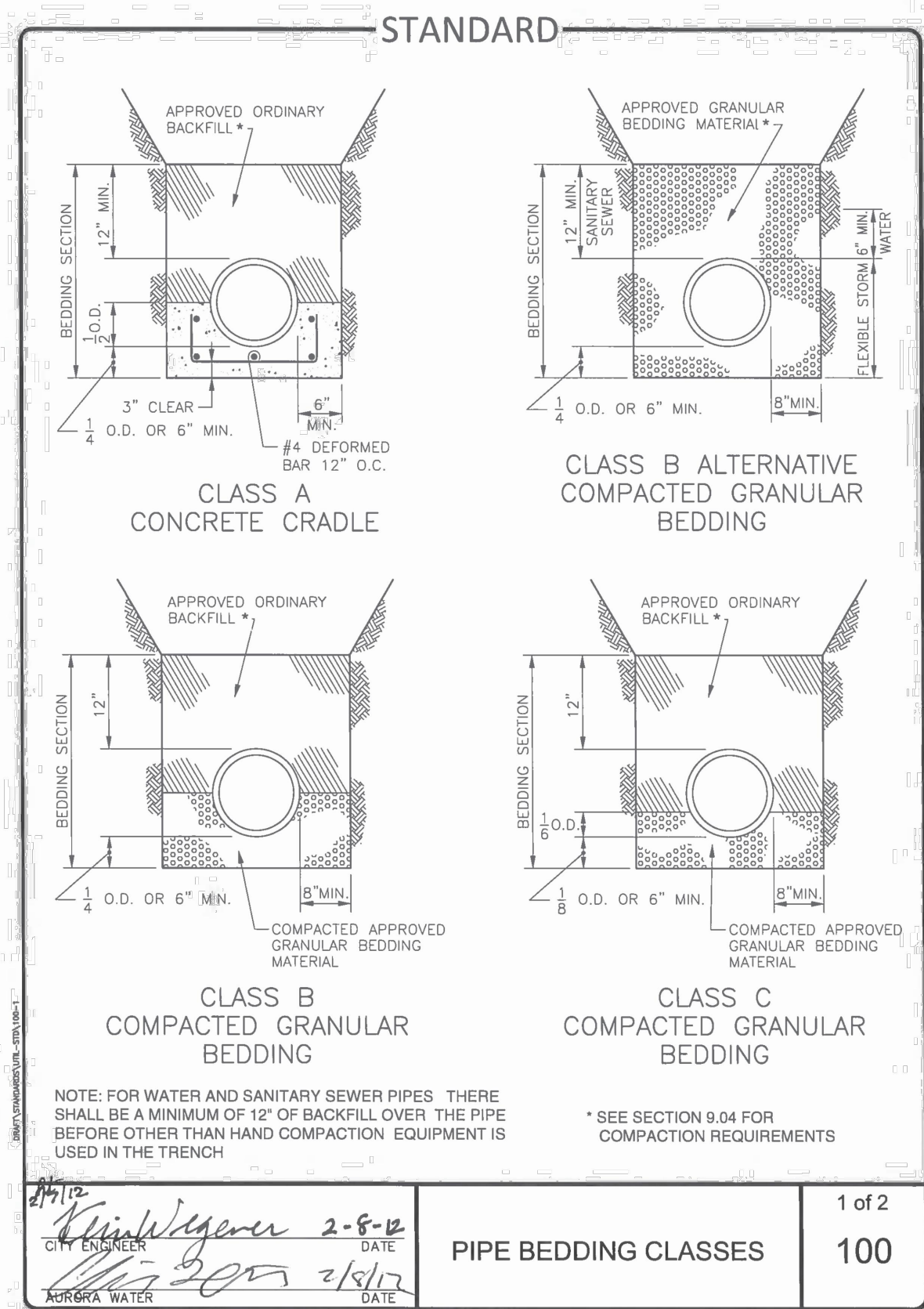
PROJECT MEMO

Date	02/21/2018	CRB Project # 173089	
Project	MycoTechnology – Project Shiitake		
	18250 E. 40 th Ave., Unit 50		
	Aurora, CO 80011		
To	City Of Aurora – Planning Department		
	15151 E. Alameda Parkway, 2 nd Floor		
	Aurora, Colorado 80012		
Subject	Minor Amendment Submittal Comments		

COMMENTS

Regarding the comments to our Minor Amendment Submission to CRB, the following comments have been addressed.

- C. Civil Engineering – Comment to sheet C-1 - “Point of Connection should be at the public main in the drive lane, not in Walden Street” and “Upsizing of the existing 2 inch to a 3 inch meter will be required. Show and label the abandonment of the existing service at the main, the removal of the 2 inch meter and vault, a new wet tap (8 by 4) and 3 inch meter vault per COA Standard detail. Additional pocket easement may be required by separate document.”**
CRB Response: Water main tie in location has been updated along with line size. Existing 2” line to be abandoned and easement application will be submitted. See updated drawings.
- F. Forestry – “Several of the trees on the project will be relocated out of construction limits. I have included the mitigation values of these trees in the event they do not survive transplanting. Any tree that is removed from the site will either be replaced within the landscape or be mitigated through payment to the Community Tree Fund.”**
CRB Response: CRB will assume the mitigation cost of \$1,161.64 for the removal of the trees.
- I. Life Safety – Comments to sheet A-6000**
CRB Response: The drawing has been updated to indicate the following requested information:
 - Generator type and volume
 - Tank contents and volume
 - Generator setback from building and building openings
 - Tank setback from building



MycoTechnology
Simply Better Taste

18250 E 40TH AVENUE UNIT #50, AURORA, CO 80011

CONSULTING ARCHITECT/ENGINEER

CLARK, RICHARDSON AND BISKUP
CONSULTING ENGINEERS, INC.
CRB ARCHITECTS-ENGINEERS P.C.
1251 NW BRIARCLIFF PARKWAY
SUITE 500
KANSAS CITY, MO 64116
PHONE: 816-880-9800
FAX: 816-880-9888

CONSULTING STRUCTURAL ENGINEER

ANWAR YUSUF P.E., S.E.
P.E. License No. CO 29553
Expiration Date: 10-31-19
12312 Olive Blvd, Ste 130
St Louis, MO 63141
314-540-2300
314-550-6282
Licensed in 49 states Anwar.Yusuf@gmail.com

CONSULTING CIVIL ENGINEER

CCG COLORADO
CIVIL GROUP, INC.
ENGINEERING CONSULTANTS
5110 GRANITE ST. UNIT D
LOVELAND COLORADO 80538
(970) 278-0029

PROJECT TITLE

PROJECT SHIITAKE

REV	BY	DATE	DESCRIPTION
1	EJ	02/22/2018	MINOR AMENDMENT RE-SUBMITTAL #1

LICENSEE

NOT FOR
CONSTRUCTION

OCTOBER 2019
EDWARD J. JANSURY JR.
CO # 50799

PROJ. NO.	0058.0001.00	DESIGNED BY:	EJ
SCALE:	NONE	CHECKED BY:	EJ
SHEET SIZE:	30x42	APPROVED BY:	EJ

DRAWING TITLE

DETAILS

DRAWING NUMBER

C-5001

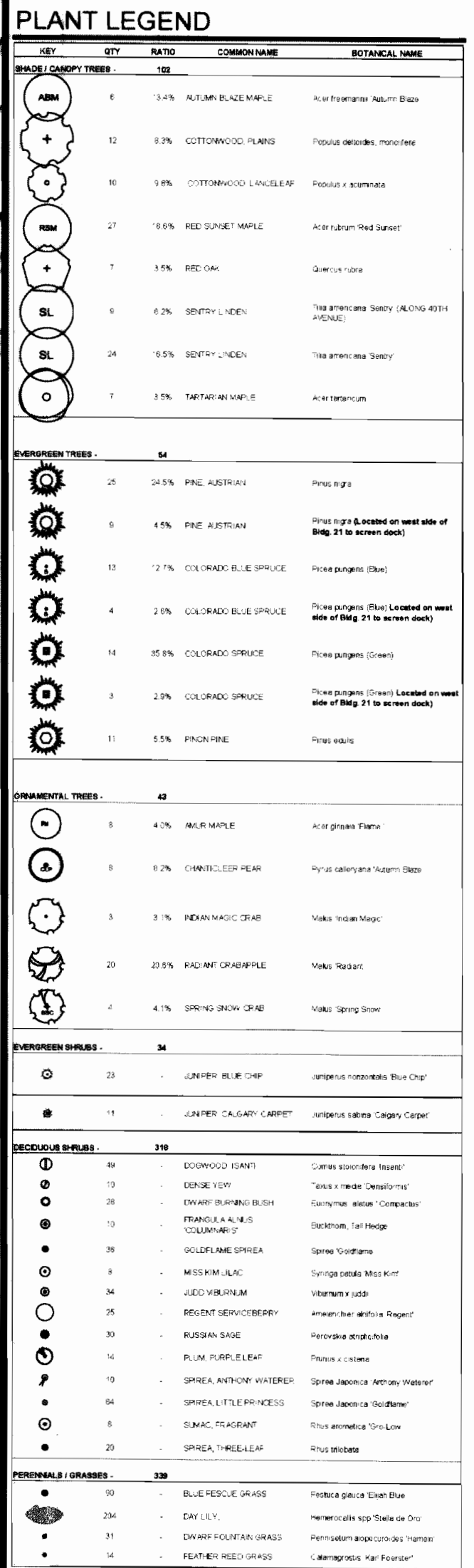
CALL THE UTILITY NOTIFICATION CENTER OF COLORADO



3 DAYS BEFORE YOU DIG
811 OR 1-800-952-1567
www.UCCO.org

0" 1" BAR IS ONE INCH ON ORIGINAL DRAWING

Existing trees to be removed to make way for the new electrical equipment. Any tree that is removed from this site will be mitigated through payment to the Community Tree Fund. See attached chart detailing mitigation value.



1	RESP. TO CITY COMMENTS	JCD	7/2
2	RESP. TO CITY COMMENTS	JCD	8/1
3	RESP. TO CITY COMMENTS	JCD	9/15
NO.	REVISION	BY	DATE APPR.

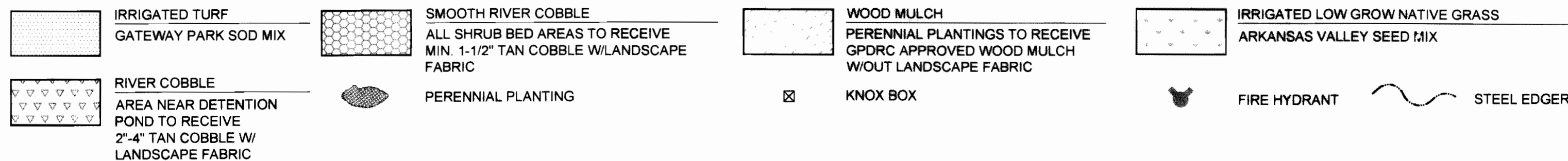
TB GROUP
landscape architecture | planning | illustration
444 Mountain Ave. TEL 970.532.5991
Berthoud, CO 80513 WEB TBGroup.us

BUILDING 21 AT GATEWAY PARK
GATEWAY PARK EAST FILING NO. 18
FINAL LANDSCAPE PLAN

DATE:	7/2/2014
DESIGNED BY:	JCD
DRAWN BY:	JCD
CHECKED BY:	MW

FILE NO.	PROJECT NO.
	067987010
SHEET NO.	
7	

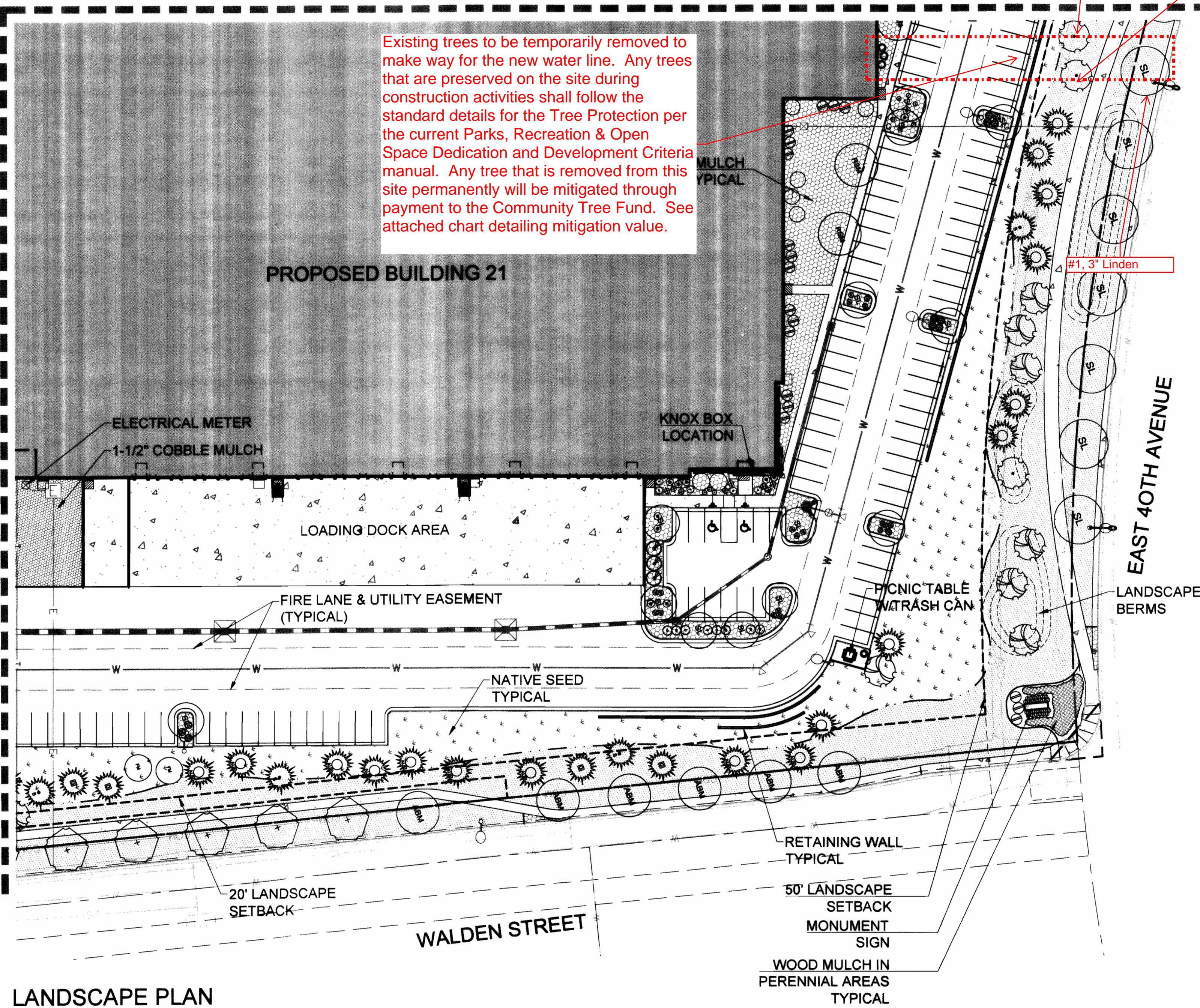
LEGEND



MATCHLINE - SEE SHEET - 10










MATCHLINE - SEE SHEET - 7

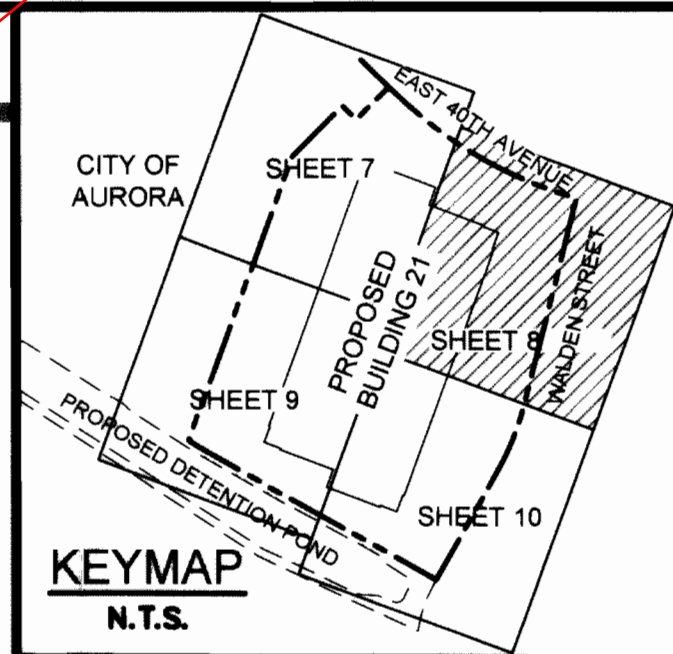
Existing trees to be temporarily removed to make way for the new water line. Any trees that are preserved on the site during construction activities shall follow the standard details for the Tree Protection per the current Parks, Recreation & Open Space Dedication and Development Criteria manual. Any tree that is removed from this site permanently will be mitigated through payment to the Community Tree Fund. See attached chart detailing mitigation value.



LANDSCAPE PLAN

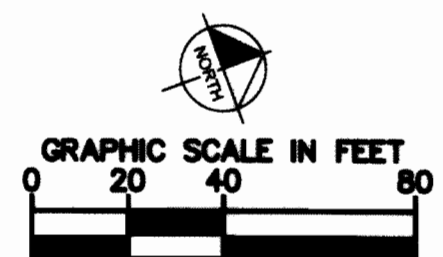
LEGEND

	IRRIGATED TURF GATEWAY PARK SOD MIX		SMOOTH RIVER COBBLE ALL SHRUB BED AREAS TO RECEIVE MIN. 1-1/2" TAN COBBLE W/LANDSCAPE FABRIC		WOOD MULCH PERENNIAL PLANTINGS TO RECEIVE GPDR C APPROVED WOOD MULCH W/OUT LANDSCAPE FABRIC		IRRIGATED LOW GROW NATIVE GRASS ARKANSAS VALLEY SEED MIX		
	RIVER COBBLE AREA NEAR DETENTION POND TO RECEIVE 2"-4" TAN COBBLE W/ LANDSCAPE FABRIC		PERENNIAL PLANTING		KNOX BOX		FIRE HYDRANT		STEEL EDGER



PLANT LEGEND

KEY	QTY	RATIO	COMMON NAME	BOTANICAL NAME
SHADE / CANOPY TREES - 102				
ABM	6	13.4%	AUTUMN GLAZE MAPLE	Acer dasycarpum 'Autumn Blaze'
+	12	8.9%	COTTONWOOD PLAINS	Populus deltoides 'monifera'
+	10	9.8%	COTTONWOOD LANCELEAF	Populus x alamosa
RMH	27	18.0%	RED SUNSET MAPLE	Acer rubrum 'Red Sunset'
+	7	1.4%	RED OAK	Quercus rubra
SL	9	6.2%	SENTRY LINDEN	Tilia americana 'Sentry' (ALONG 40TH AVENUE)
SL	24	16.5%	SENTRY LINDEN	Tilia americana 'Sentry'
O	7	3.5%	TARTARIAN MAPLE	Acer tartaricum
EVERGREEN TREES - 54				
+	25	24.5%	PINE, AUSTRALIAN	Pinus nigra
+	6	4.6%	PINE, AUSTRALIAN	Pinus nigra (located on west side of Bldg. 21 to screen dock)
+	15	12.7%	COLORADO BLUE SPRUCE	Pinus pungens (Blue)
+	4	2.6%	COLORADO BLUE SPRUCE	Pinus pungens (Blue) (located on west side of Bldg. 21 to screen dock)
+	14	35.8%	COLORADO SPRUCE	Pinus pungens (Green)
+	3	2.9%	COLORADO SPRUCE	Pinus pungens (Green) (located on west side of Bldg. 21 to screen dock)
+	11	5.5%	PRINCEPIN	Pinus edulis
ORNAMENTAL TREES - 43				
+	6	4.0%	AMUR MAPLE	Acer ginnale 'Flame'
+	8	5.2%	CHANTICLEER PEAR	Pyrus calleryana 'Autumn Blaze'
+	3	3.1%	NO ANIMATED CRAB	Malus 'Indian Magic'
+	20	26.6%	RADIANT CRABAPPLE	Malus 'Radiant'
+	4	4.1%	SPRING SNOW CRAB	Malus 'Spring Snow'
EVERGREEN SHRUBS - 34				
+	23	-	JUNIPER, BLUE CHIP	Juniperus horizontalis 'Blue Chip'
+	11	-	JUNIPER, CALDWAY CARPET	Juniperus sabina 'Caldway Carpet'
DECIDUOUS SHRUBS - 316				
+	49	-	DOGWOOD, WHITE	Cornus alternifolia 'Innocent'
+	10	-	DENSE YEW	Taxus x media 'Densiformis'
+	26	-	DMART BURNING BUSH	Eurocyathus 'Compact'
+	10	-	FRANKLIN ALBIS 'COLUMBIENS'	Buddleia 'Tail Hedge'
+	35	-	GOLDFLAME SPIREA	Spiraea 'Goldflame'
+	8	-	MISSISSIPPI LILAC	Syringa patula 'Missouri'
+	34	-	JUDO REBURNUM	Viburnum x juddi
+	25	-	RESENT SERVICEBERRY	Amelanchier alnifolia 'Ragwort'
+	30	-	RUSSIAN SAGE	Perovskia atropurpurea
+	14	-	FLUM, PURPLE LEAF	Prunus x cistena
+	10	-	SPirea, ANTHONY WATERER	Spiraea japonica 'Anthony Waterer'
+	64	-	SPirea, LITTLE PRINCESS	Spiraea japonica 'Little Princess'
+	8	-	SUMAC, FRAGRANT	Rhus aromatica 'Gris-Lux'
+	20	-	SPirea, THREES-LEAF	Rhus typhina
PERENNIALS / GRASSES - 329				
+	50	-	BLUE PEGASUS GRASS	Festuca glauca 'Blue Blue'
+	204	-	DAY LILY	Hemerocallis spp. 'Stella de Oro'
+	31	-	DMART FOUNTAIN GRASS	Pennisetum alopecuroides 'Harris'
+	14	-	FEATHER REED GRASS	Calamagrostis 'Nail Fender'



1	RESP. TO CITY COMMENTS	JCD	7/2
2	RESP. TO CITY COMMENTS	JCD	8/1
3	RESP. TO CITY COMMENTS	JCD	9/15
REVISION		BY	DATE
NO.		BY	DATE
13 GROUP landscape architecture (planning) illustration 444 Mountain Ave. TEL: 970.632.5981 Boulder CO 80513 WEB: 13Group.us			
BUILDING 21 AT GATEWAY PARK GATEWAY PARK EAST FILING NO. 18 FINAL LANDSCAPE PLAN			
DATE:	7/2/2014	DESIGNED BY:	JCD
		DRAWN BY:	JCD
		CHECKED BY:	MW
FILE NO.	PROJECT NO.	SHEET NO.	
	067987010	8	



DRAWING NUMBER

A-6000