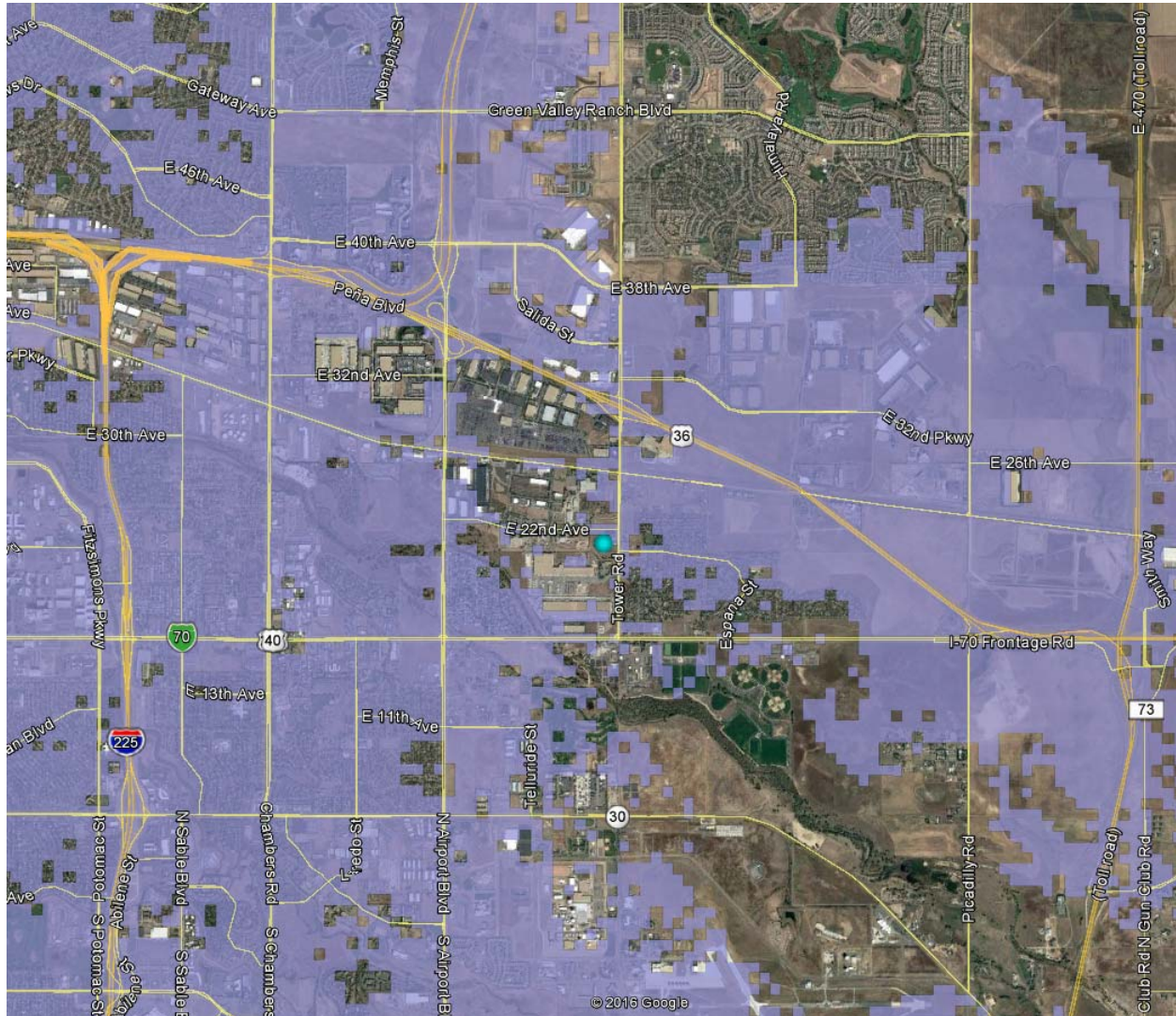


## DN01462A Existing T-Mobile Coverage

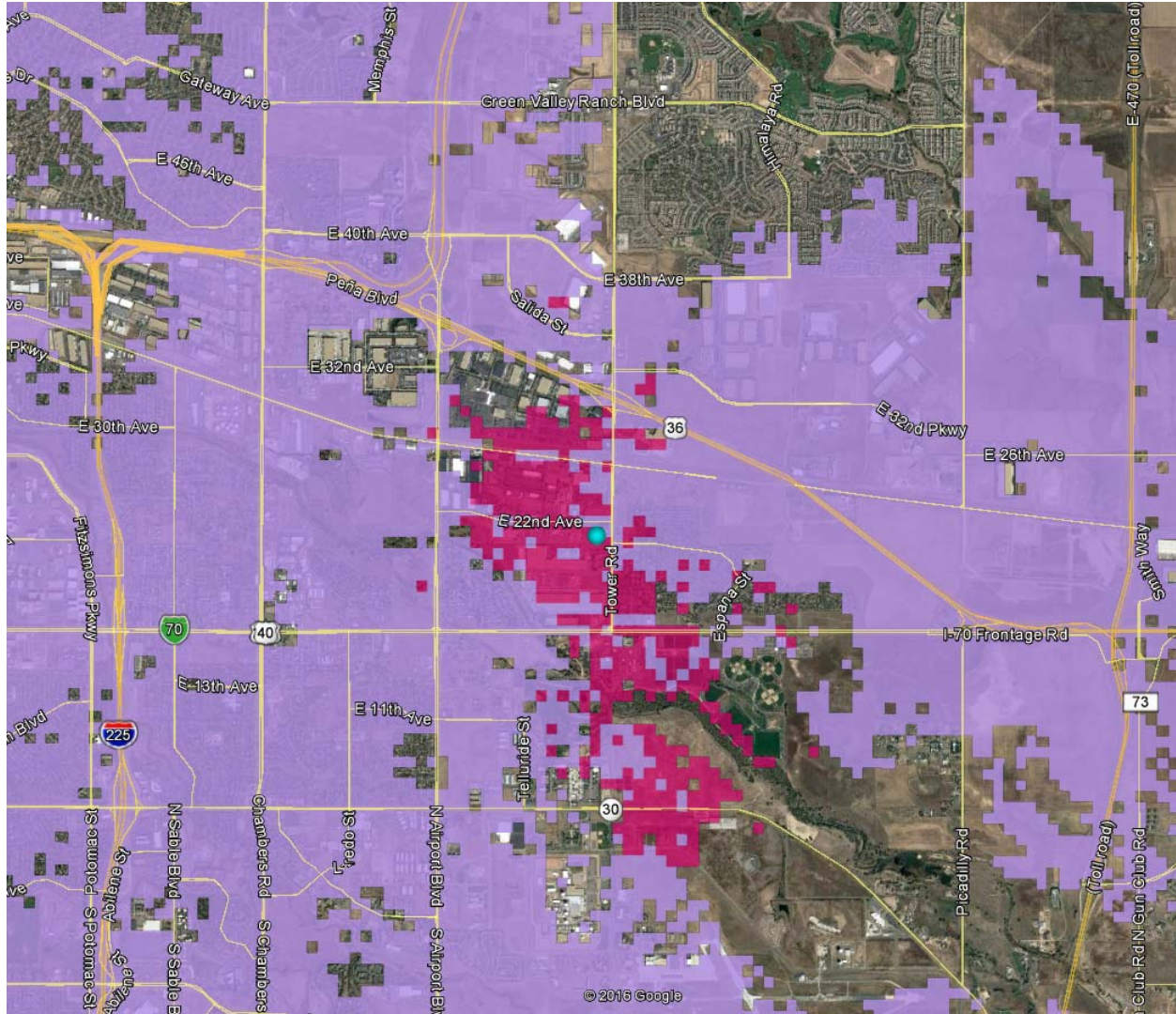
T-Mobile currently has significant gaps in service quality to the East and South of the property, particularly along Smith Rd and 6th Ave. Gaps also exist in neighborhood areas East of Tower road and North of 6<sup>th</sup> Ave. In addition, surrounding cell sites are projected to exceed the capacity capability of T-Mobile's radio frequency spectrum allotment within the next two years.



## DN01462A Projected T-Mobile Coverage with 60' Antenna Height

While there is improvement in coverage, several sizable gaps still exist along Smith Rd, 70 Business and 6th Ave.

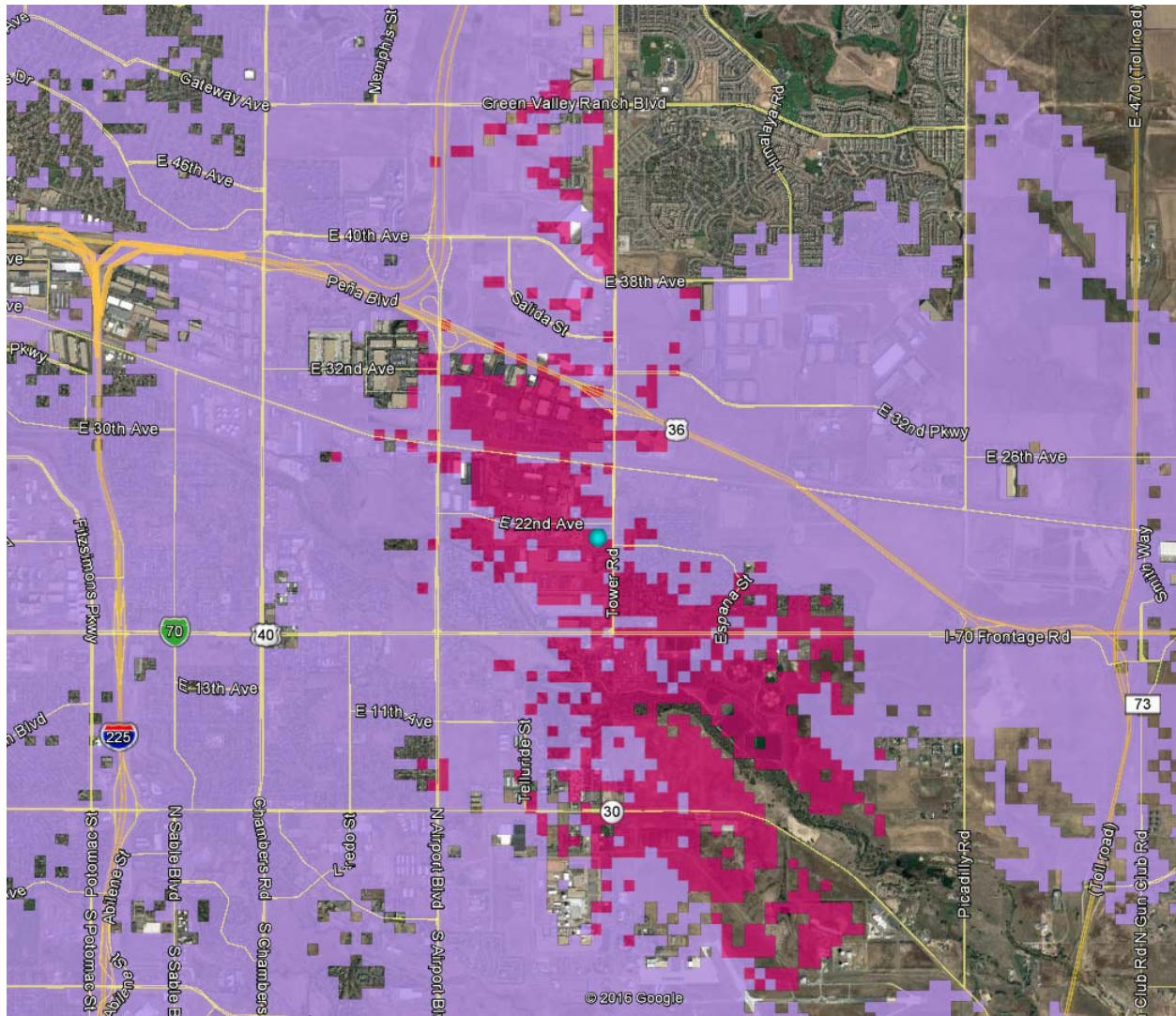
In addition T-Mobile engineers do not believe the capacity offload of adjacent cell sites would be significant enough for future growth without multiple transmission facilities of this height in the area.





## DN01462A Projected T-Mobile Coverage @ 125' Antenna Height

The greater height provides much better service levels in the target areas. Smith Rd and 70 Business are mostly covered. 6th Ave has small gaps but much more of it has coverage than at 60'. Additional height would be required to completely fill in these gaps but, T-Mobile engineers believe 125' is a good compromise, allowing for better in-building coverage for the customers. In addition 125' will provide significant offload of existing cell sites allowing for subdivision of network traffic for future capacity concerns.



## DN01462A Projected T-Mobile Composite Coverage

