

# Parcel Map Check Report

**Client:**  
**Prepared by:**  
Aztec Consultants  
300 E. Mineral Ave. Ste 1 Littleton Co 80122  
**Date:** 1/31/2020 2:48:53 PM

---

**Parcel Name:** OVERALL BOUNDARY - 1

**Description:**  
Process segment order counterclockwise: False  
Enable mapcheck across chord: False

North: 706,829.036'                      East: 209,831.639'

**Segment# 1: Line**

Course: S89° 33' 43"W                      Length: 195.75'  
North: 706,827.540'                      East: 209,635.895'

**Segment# 2: Curve**

Length: 39.34'                      Radius: 25.00'  
Delta: 90°09'30"                      Tangent: 25.07'  
Chord: 35.40'                      Course: N45° 21' 32"W  
Course In: N0° 26' 17"W                      Course Out: S89° 43' 12"W  
RP North: 706,852.539'                      East: 209,635.703'  
End North: 706,852.417'                      East: 209,610.704'

**Segment# 3: Line**

Course: N0° 16' 48"W                      Length: 927.15'  
North: 707,779.556'                      East: 209,606.173'

**Segment# 4: Curve**

Length: 39.39'                      Radius: 25.00'  
Delta: 90°16'48"                      Tangent: 25.12'  
Chord: 35.44'                      Course: N44° 51' 36"E  
Course In: N89° 43' 12"E                      Course Out: N0° 00' 00"E  
RP North: 707,779.678'                      East: 209,631.173'  
End North: 707,804.678'                      East: 209,631.173'

**Segment# 5: Line**

Course: N90° 00' 00"E                      Length: 97.01'  
North: 707,804.678'                      East: 209,728.183'

**Segment# 6: Curve**

Length: 23.56'                      Radius: 15.00'  
Delta: 90°00'00"                      Tangent: 15.00'  
Chord: 21.21'                      Course: S45° 00' 00"E  
Course In: S0° 00' 00"E                      Course Out: N90° 00' 00"E  
RP North: 707,789.678'                      East: 209,728.183'  
End North: 707,789.678'                      East: 209,743.183'

**Segment# 7: Line**

Course: S0° 00' 00"E                      Length: 4.50'  
North: 707,785.178'                      East: 209,743.183'

**Segment# 8: Line**

Course: N90° 00' 00"E                      Length: 64.00'  
North: 707,785.178'                      East: 209,807.183'

**Segment# 9: Line**

Course: N0° 00' 00"E                      Length: 4.50'  
North: 707,789.678'                      East: 209,807.183'

**Segment# 10: Curve**

Length: 23.56'                      Radius: 15.00'

Delta: 90°00'00"	Tangent: 15.00'
Chord: 21.21'	Course: N45° 00' 00"E
Course In: N90° 00' 00"E	Course Out: N0° 00' 00"E
RP North: 707,789.678'	East: 209,822.183'
End North: 707,804.678'	East: 209,822.183'
Segment# 11: Line	
Course: N90° 00' 00"E	Length: 89.00'
North: 707,804.678'	East: 209,911.183'
Segment# 12: Line	
Course: S0° 00' 00"E	Length: 494.97'
North: 707,309.708'	East: 209,911.183'
Segment# 13: Line	
Course: N90° 00' 00"E	Length: 93.00'
North: 707,309.708'	East: 210,004.183'
Segment# 14: Line	
Course: S0° 00' 00"E	Length: 64.00'
North: 707,245.708'	East: 210,004.183'
Segment# 15: Line	
Course: N90° 00' 00"E	Length: 382.50'
North: 707,245.708'	East: 210,386.683'
Segment# 16: Line	
Course: N0° 00' 00"E	Length: 64.00'
North: 707,309.708'	East: 210,386.683'
Segment# 17: Line	
Course: N90° 00' 00"W	Length: 4.50'
North: 707,309.708'	East: 210,382.183'
Segment# 18: Curve	
Length: 23.56'	Radius: 15.00'
Delta: 90°00'00"	Tangent: 15.00'
Chord: 21.21'	Course: N45° 00' 00"W
Course In: N0° 00' 00"E	Course Out: N90° 00' 00"W
RP North: 707,324.708'	East: 210,382.183'
End North: 707,324.708'	East: 210,367.183'
Segment# 19: Line	
Course: N0° 00' 00"E	Length: 185.93'
North: 707,510.638'	East: 210,367.183'
Segment# 20: Curve	
Length: 23.56'	Radius: 15.00'
Delta: 90°00'00"	Tangent: 15.00'
Chord: 21.21'	Course: N45° 00' 00"E
Course In: N90° 00' 00"E	Course Out: N0° 00' 00"E
RP North: 707,510.638'	East: 210,382.183'
End North: 707,525.638'	East: 210,382.183'
Segment# 21: Line	
Course: N90° 00' 00"E	Length: 4.50'
North: 707,525.638'	East: 210,386.683'
Segment# 22: Line	
Course: N0° 00' 00"E	Length: 64.00'
North: 707,589.638'	East: 210,386.683'
Segment# 23: Line	

Course: N90° 00' 00"W	Length: 4.50'
North: 707,589.638'	East: 210,382.183'
Segment# 24: Curve	
Length: 23.56'	Radius: 15.00'
Delta: 90°00'00"	Tangent: 15.00'
Chord: 21.21'	Course: N45° 00' 00"W
Course In: N0° 00' 00"E	Course Out: N90° 00' 00"W
RP North: 707,604.638'	East: 210,382.183'
End North: 707,604.638'	East: 210,367.183'
Segment# 25: Line	
Course: N0° 00' 00"E	Length: 95.00'
North: 707,699.638'	East: 210,367.183'
Segment# 26: Line	
Course: N90° 00' 00"E	Length: 347.32'
North: 707,699.638'	East: 210,714.503'
Segment# 27: Line	
Course: N33° 27' 08"W	Length: 156.22'
North: 707,829.980'	East: 210,628.388'
Segment# 28: Curve	
Length: 44.27'	Radius: 282.00'
Delta: 8°59'39"	Tangent: 22.18'
Chord: 44.22'	Course: N61° 02' 42"E
Course In: N24° 27' 29"W	Course Out: S33° 27' 08"E
RP North: 708,086.674'	East: 210,511.632'
End North: 707,851.389'	East: 210,667.082'
Segment# 29: Line	
Course: N56° 32' 52"E	Length: 50.95'
North: 707,879.474'	East: 210,709.592'
Segment# 30: Curve	
Length: 23.56'	Radius: 15.00'
Delta: 89°59'59"	Tangent: 15.00'
Chord: 21.21'	Course: S78° 27' 07"E
Course In: S33° 27' 07"E	Course Out: N56° 32' 52"E
RP North: 707,866.959'	East: 210,717.861'
End North: 707,875.228'	East: 210,730.376'
Segment# 31: Line	
Course: S33° 27' 08"E	Length: 4.50'
North: 707,871.473'	East: 210,732.856'
Segment# 32: Line	
Course: N56° 32' 52"E	Length: 64.00'
North: 707,906.753'	East: 210,786.254'
Segment# 33: Line	
Course: N33° 27' 08"W	Length: 4.50'
North: 707,910.507'	East: 210,783.774'
Segment# 34: Curve	
Length: 23.56'	Radius: 15.00'
Delta: 90°00'00"	Tangent: 15.00'
Chord: 21.21'	Course: N11° 32' 52"E
Course In: N56° 32' 52"E	Course Out: N33° 27' 08"W
RP North: 707,918.776'	East: 210,796.289'
End North: 707,931.291'	East: 210,788.020'

Segment# 35: Line	
Course: N56° 32' 52"E	Length: 223.97'
North: 708,054.753'	East: 210,974.889'
Segment# 36: Curve	
Length: 23.56'	Radius: 15.00'
Delta: 90°00'00"	Tangent: 15.00'
Chord: 21.21'	Course: S78° 27' 08"E
Course In: S33° 27' 08"E	Course Out: N56° 32' 52"E
RP North: 708,042.237'	East: 210,983.157'
End North: 708,050.506'	East: 210,995.673'
Segment# 37: Line	
Course: S33° 27' 08"E	Length: 4.50'
North: 708,046.752'	East: 210,998.153'
Segment# 38: Line	
Course: N56° 32' 52"E	Length: 64.00'
North: 708,082.031'	East: 211,051.551'
Segment# 39: Line	
Course: N33° 27' 08"W	Length: 4.50'
North: 708,085.786'	East: 211,049.071'
Segment# 40: Curve	
Length: 23.56'	Radius: 15.00'
Delta: 90°00'00"	Tangent: 15.00'
Chord: 21.21'	Course: N11° 32' 52"E
Course In: N56° 32' 52"E	Course Out: N33° 27' 08"W
RP North: 708,094.054'	East: 211,061.586'
End North: 708,106.569'	East: 211,053.317'
Segment# 41: Line	
Course: N56° 32' 52"E	Length: 151.03'
North: 708,189.823'	East: 211,179.329'
Segment# 42: Curve	
Length: 31.42'	Radius: 20.00'
Delta: 90°00'00"	Tangent: 20.00'
Chord: 28.28'	Course: S78° 27' 08"E
Course In: S33° 27' 08"E	Course Out: N56° 32' 52"E
RP North: 708,173.136'	East: 211,190.353'
End North: 708,184.161'	East: 211,207.040'
Segment# 43: Line	
Course: S33° 27' 08"E	Length: 4.50'
North: 708,180.407'	East: 211,209.521'
Segment# 44: Line	
Course: N56° 32' 52"E	Length: 80.00'
North: 708,224.506'	East: 211,276.269'
Segment# 45: Curve	
Length: 433.07'	Radius: 436.80'
Delta: 56°48'23"	Tangent: 236.21'
Chord: 415.55'	Course: S61° 51' 19"E
Course In: N56° 32' 52"E	Course Out: S0° 15' 31"E
RP North: 708,465.288'	East: 211,640.711'
End North: 708,028.493'	East: 211,642.682'
Segment# 46: Line	
Course: N89° 44' 29"E	Length: 467.55'
North: 708,030.603'	East: 212,110.228'

Segment# 47: Curve	
Length: 39.27'	Radius: 25.00'
Delta: 90°00'00"	Tangent: 25.00'
Chord: 35.36'	Course: N44° 44' 29"E
Course In: N0° 15' 31"W	Course Out: N89° 44' 29"E
RP North: 708,055.603'	East: 212,110.115'
End North: 708,055.716'	East: 212,135.115'

Segment# 48: Line	
Course: S0° 15' 31"E	Length: 909.61'
North: 707,146.115'	East: 212,139.220'

Segment# 49: Line	
Course: S3° 33' 18"W	Length: 210.47'
North: 706,936.050'	East: 212,126.170'

Segment# 50: Line	
Course: S0° 15' 25"E	Length: 76.55'
North: 706,859.501'	East: 212,126.513'

Segment# 51: Curve	
Length: 39.19'	Radius: 25.00'
Delta: 89°49'08"	Tangent: 24.92'
Chord: 35.30'	Course: S44° 39' 04"W
Course In: S89° 44' 29"W	Course Out: S0° 26' 22"E
RP North: 706,859.388'	East: 212,101.513'
End North: 706,834.389'	East: 212,101.705'

Segment# 52: Line	
Course: S89° 33' 43"W	Length: 2,110.08'
North: 706,818.256'	East: 209,991.687'

Segment# 53: Line	
Course: N86° 08' 53"W	Length: 160.41'
North: 706,829.032'	East: 209,831.639'

Perimeter: 8,811.47'	Area: 2,547,357Sq.Ft.
Error Closure: 0.004	Course: S1° 05' 01"E
Error North : -0.0043	East: 0.0001

Precision 1: 2,202,865.00

COLORADO LAND SURVEY MONUMENT RECORD

REPORT ONE MONUMENT ONLY ON THIS FORM  
REPRODUCTION OF THIS FORM IS AUTHORIZED.

All items to be filled in by the Land Surveyor using permanent black lettering and lines which can be reproduced. (Except)\*

1. TYPE OF MONUMENT

(Check one)

☐ Section Corner

☒ Quarter Corner

☐ Bench mark

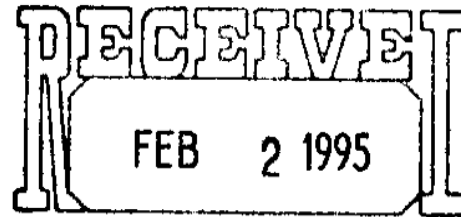
☐ Other \_\_\_\_\_

2. DESCRIPTION OF MONUMENT FOUND AND MONUMENT MARKINGS.

FOUND 2" BRASS CAP (MARKED AS SHOWN IN SKETCH BELOW) SET IN CONCRETE 0.2' BELOW SURFACE.

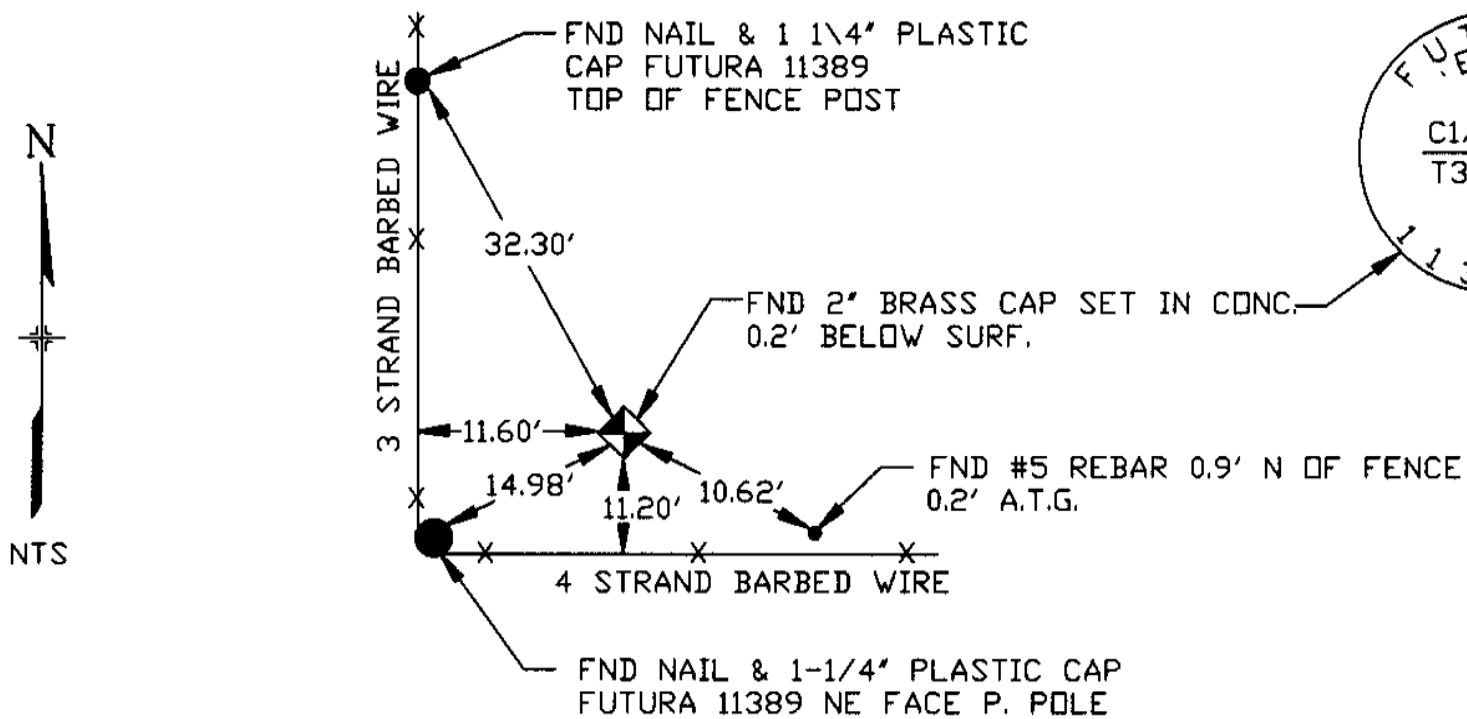
3. DESCRIPTION OF MONUMENT AND MONUMENT MARKINGS ESTABLISHED BY YOU TO PERPETUATE THE LOCATION OF THIS POINT.

MONUMENT AND REFERENCES MATCH MONUMENT RECORD DATED  
3\5\86 BY GARY LUTES LS 19611



COLO. ST. BD. OF REG.  
FOR PE AND PLS

4. SKETCH SHOWING RELATIVE LOCATION OF MONUMENT ACCESSORIES AND REFERENCE POINTS STATING WHETHER FOUND OR SET. SHOW SUPPORTING AND/OR CONTRADICTORY EVIDENCE WHERE APPLICABLE



Date of Field Work 11-18-93

5. CERTIFICATION

This is to certify that I was in responsible charge of the survey work described in this record and that to the best of my knowledge the information presented herein is true and correct.

Signature Lee E. Lovell  
Firm Name WESTERN STATES SURVEYING, INC.  
Firm Address 19029 EAST PLAZA DRIVE #252 PARKER, CO. 80134  
Phone (303) 841-7436

Date 1-24-94

EL70 Public Highway Authority

6. LOCATION DIAGRAM  
1" = 1 Mile



• = Location of Monument



Surveyor's Seal

\*(Do not fill in)

Accepted for Filing

State Board of Registration for Professional Engineers and Land Surveyors

APR 03 1995

By \_\_\_\_\_

Date \_\_\_\_\_

COLO. ST. BD. OF REG.  
FOR PE AND PLS

RECEIVED AT THE OFFICE OF THE COUNTY CLERK;

\_\_\_\_\_ COUNTY

By \_\_\_\_\_

Date \_\_\_\_\_

Record to be filed by Index Reference Number, numerically, then alphabetically, under appropriate Township, Range, and Meridian.

7. SEC. 24, T 3 S, R 66 W, 6th \_\_\_\_\_ P.M.

COUNTY ADAMS INDEX REF. NO. 23-L

8. SEC. \_\_\_\_\_, T \_\_\_\_\_, R \_\_\_\_\_, \_\_\_\_\_ P.M.

COUNTY \_\_\_\_\_ INDEX REF. NO. \_\_\_\_\_

COLORADO LAND SURVEY MONUMENT RECORD

REPORT ONE MONUMENT ONLY ON THIS FORM  
REPRODUCTION OF THIS FORM IS AUTHORIZED.

All items to be filled in by the Land Surveyor using permanent black lettering and lines which can be reproduced. (Except)\*

1. TYPE OF MONUMENT

(Check one)

☐ Section Corner

☒ Quarter Corner

☐ Bench mark

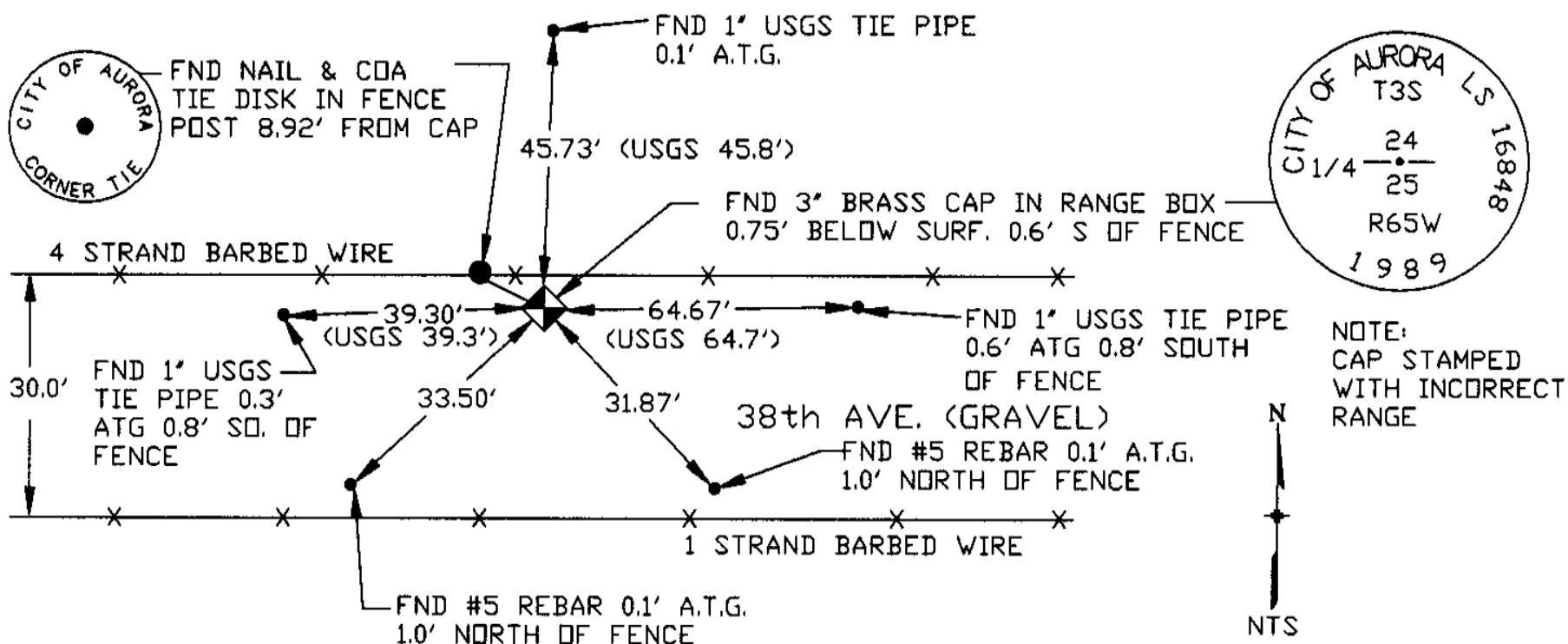
☐ Other \_\_\_\_\_

2. DESCRIPTION OF MONUMENT FOUND AND MONUMENT MARKINGS.

FOUND 3" BRASS CAP (MARKED AS SHOWN IN SKETCH BELOW) 0.75' BELOW SURFACE  
IN RANGE BOX

3. DESCRIPTION OF MONUMENT AND MONUMENT MARKINGS ESTABLISHED BY YOU TO PERPETUATE THE LOCATION OF THIS POINT.

4. SKETCH SHOWING RELATIVE LOCATION OF MONUMENT ACCESSORIES AND REFERENCE POINTS STATING WHETHER FOUND OR SET. SHOW SUPPORTING AND/OR CONTRADICTORY EVIDENCE WHERE APPLICABLE



Date of Field Work 11-18-93

5. CERTIFICATION

This is to certify that I was in responsible charge of the survey work described in this record and that to the best of my knowledge the information presented herein is true and correct.

Date 1-24-94

Signature

Firm Name: WESTERN STATES SURVEYING, INC.

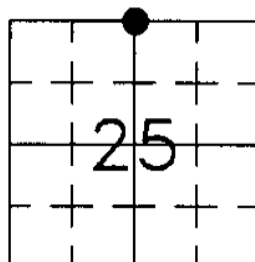
Firm Address: 19029 EAST PLAZA DRIVE #252 PARKER, CO. 80134

Phone: (303) 841-7436

ET10 Public Highway Authority

6. LOCATION DIAGRAM

1" = 1 Mile



• = Location of Monument



Surveyor's Seal

7. SEC. 25, T 3 S, R 66 W, 6th P.M.

COUNTY ADAMS INDEX REF. NO. 23-J

8. SEC. \_\_\_\_\_, T \_\_\_\_\_, R \_\_\_\_\_, \_\_\_\_\_ P.M.

COUNTY \_\_\_\_\_ INDEX REF. NO. \_\_\_\_\_

\*(Do not fill in)

Accepted for Filing

State Board of Registration for Professional Engineers and Land Surveyors:

By \_\_\_\_\_

Date \_\_\_\_\_

COLO. ST. BD. OF REG.  
FOR PE AND PLS

RECEIVED AT THE OFFICE OF THE COUNTY CLERK;

\_\_\_\_\_ COUNTY

By \_\_\_\_\_

Date \_\_\_\_\_

Record to be filed by Index Reference Number, numerically, then alphabetically, under appropriate Township, Range, and Meridian.

SEP 09 2009

REPORT ONE MONUMENT ONLY ON THIS FORM - REPRODUCTION OF THIS FORM IS AUTHORIZED  
All items to be filled in by the Land Surveyor using **PERMANENT BLACK LETTERING** and lines which can be reproduced

1. TYPE OF MONUMENT: ☒ SECTION CORNER ☐ QUARTER CORNER ☐ BENCH MARK ☐ OTHER \_\_\_\_\_

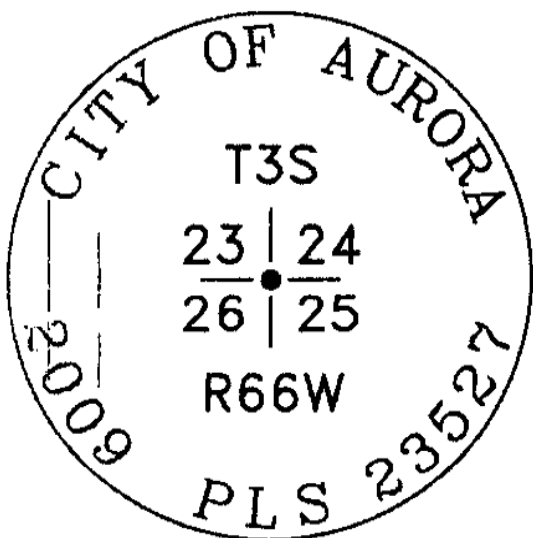
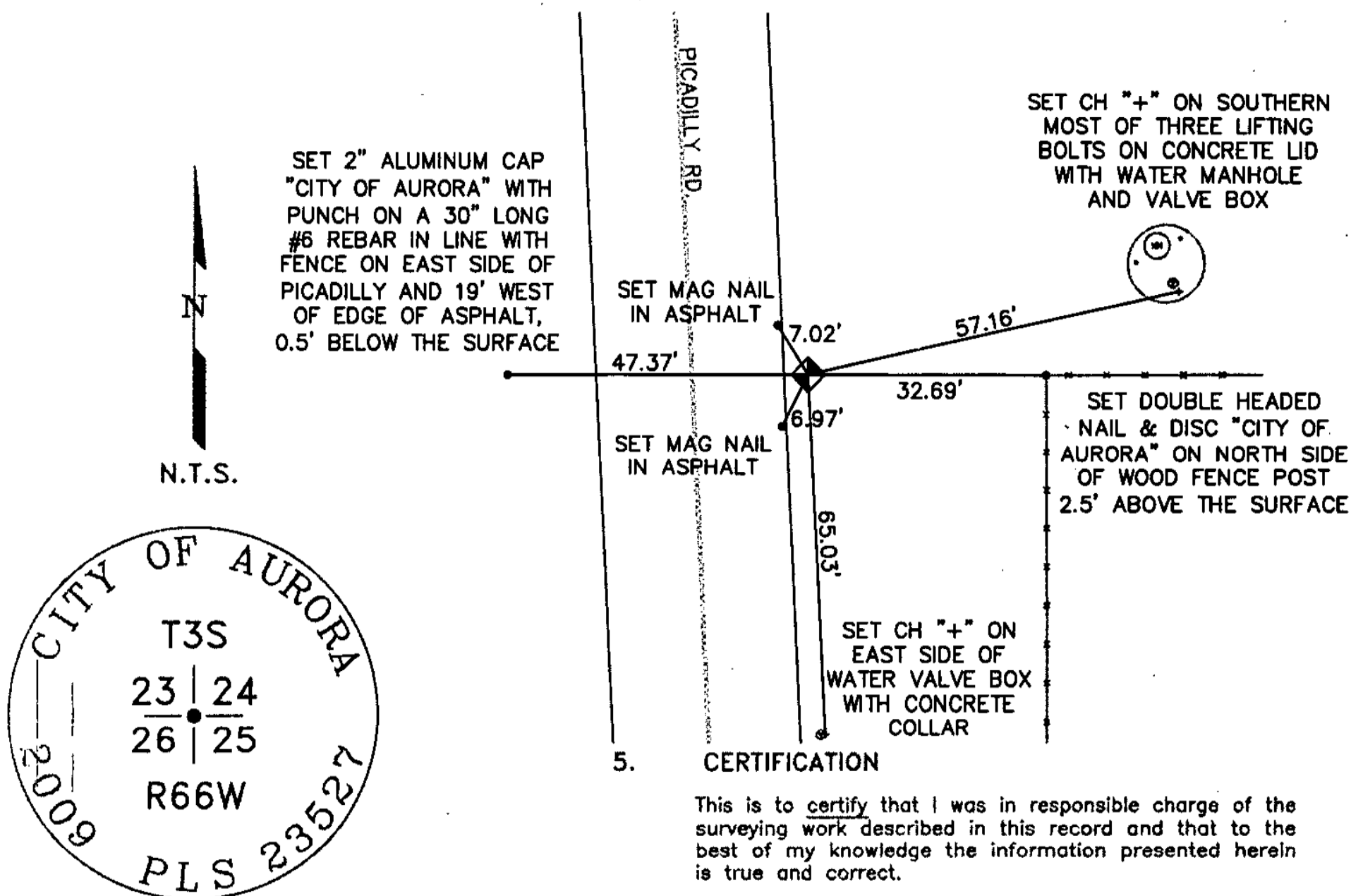
2. DESCRIPTION OF MONUMENT FOUND:

FOUND NO MONUMENT AND NO TIES, PRESUMABLY DESTROYED IN PICADILLY RD. CONSTRUCTION.

3. DESCRIPTION OF MONUMENT ESTABLISHED BY YOU TO PERPETUATE THE LOCATION OF THIS POINT:

ESTABLISHED POSITION FROM CITY OF AURORA HORIZONTAL CONTROL NETWORK AND SET 3" BRASS CAP ON A 30" LONG, 3" DIA. STEEL PIPE, IN CONCRETE AND 0.5' DOWN IN A RANGE BOX. SET T-POST 1.5' SOUTH OF CORNER.

4. SKETCH SHOWING RELATIVE LOCATION OF MONUMENT, ACCESSORIES AND REFERENCE POINTS STATING WHETHER FOUND OR SET, SHOW SUPPORTING AND/OR CONTRADICTORY EVIDENCE WHERE APPLICABLE:



Stamping on Cap

5. CERTIFICATION

This is to certify that I was in responsible charge of the surveying work described in this record and that to the best of my knowledge the information presented herein is true and correct.

Name (Please Print): JAN STERLING

Firm Name: CITY OF AURORA

Firm Address: 13645 E. ELLSWORTH AVE.  
AURORA, COLORADO 80012

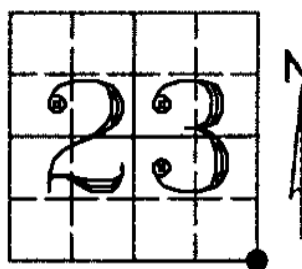
Phone: 303-326-8015

a. Date of field Work to Establish, Restore or Rehabilitate Monument: AUGUST 4, 2009

b. Date Monument was used as Control: \_\_\_\_\_

6. LOCATION DIAGRAM

1" = 1 Mile



• = Location of Monument Signature/Date through Seal

7. SEC. 23 T. 3S R. 66W 6TH P.M.  
COUNTY DENVER INDEX REF NUMBER 21-J

\*\*8. SEC. 24 T. 3S R. 66W 6TH P.M.  
COUNTY ADAMS INDEX REF NUMBER 21-J

(Do not fill in)

**ACCEPTED**

OCT 28 2009

COLO. ST. BD. OF LIC.  
FORAES

RECEIVED AT OFFICE OF THE COUNTY CLERK  
\_\_\_\_\_ COUNTY

BY: \_\_\_\_\_

SEP 09 2009

COLO. ST. BD. OF LIC.

FOR AES

REPORT ONE MONUMENT ONLY ON THIS FORM - REPRODUCTION OF THIS FORM IS AUTHORIZED FOR AES  
All items to be filled in by the Land Surveyor using **PERMANENT BLACK LETTERING** and lines which can be reproduced

1. TYPE OF MONUMENT: ☐ SECTION CORNER ☒ QUARTER CORNER ☐ BENCH MARK ☐ OTHER\_\_\_\_\_

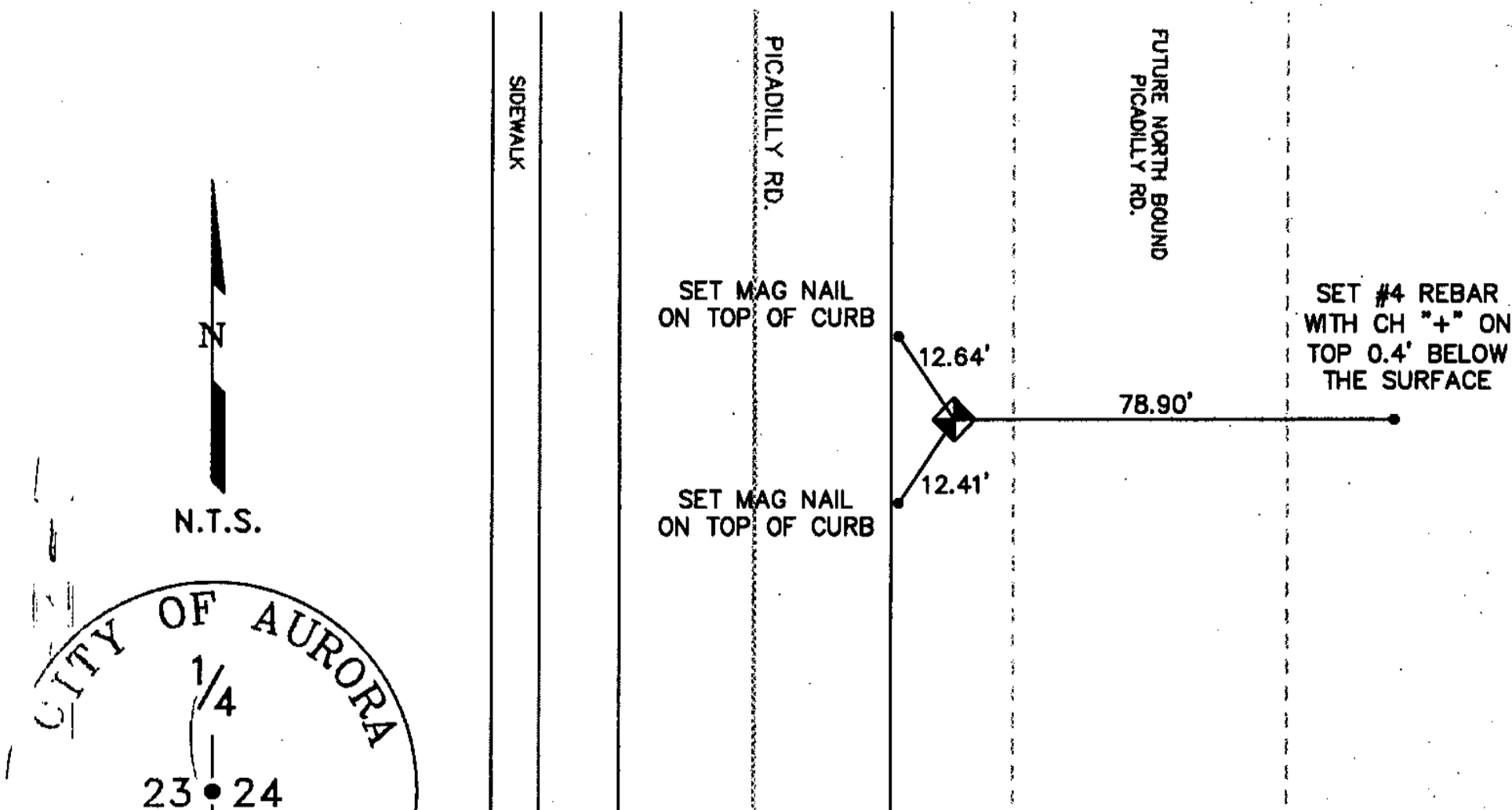
2. DESCRIPTION OF MONUMENT FOUND:

FOUND NO MONUMENT AND NO TIES, PRESUMABLY DESTROYED IN PICADILLY RD. CONSTRUCTION.

3. DESCRIPTION OF MONUMENT ESTABLISHED BY YOU TO PERPETUATE THE LOCATION OF THIS POINT:

ESTABLISHED POSITION FROM CITY OF AURORA HORIZONTAL CONTROL NETWORK AND SET 3" BRASS CAP ON A 30" LONG, 3" DIA. STEEL PIPE, IN CONCRETE AND 0.4' DOWN IN A RANGE BOX. SET T-POST 2' EAST OF CORNER.

4. SKETCH SHOWING RELATIVE LOCATION OF MONUMENT, ACCESSORIES AND REFERENCE POINTS STATING WHETHER FOUND OR SET, SHOW SUPPORTING AND/OR CONTRADICTIONARY EVIDENCE WHERE APPLICABLE:



5. CERTIFICATION

This is to certify that I was in responsible charge of the surveying work described in this record and that to the best of my knowledge the information presented herein is true and correct.

Name (Please Print): JAN STERLING

Firm Name: CITY OF AURORA

Firm Address: 13645 E. ELLSWORTH AVE.

AURORA, COLORADO 80012

Phone: 303-326-8015

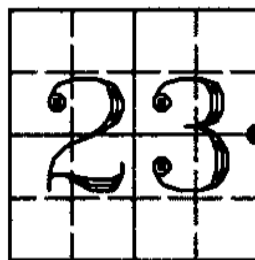
a. Date of field Work to Establish, Restore or Rehabilitate Monument: AUGUST 4, 2009

b. Date Monument was used as Control: \_\_\_\_\_

(Do not fill in)

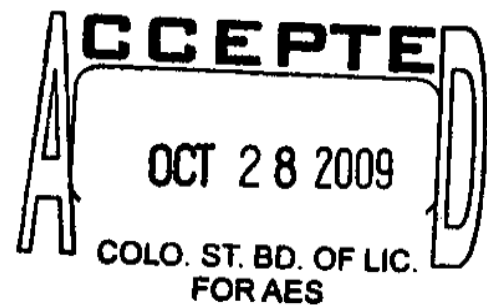
6. LOCATION DIAGRAM

1" = 1 Mile



7. SEC 23 T 3S R 66W 6TH P.M.  
COUNTY DENVER INDEX REF NUMBER 21-L

\*\*8. SEC 24 T 3S R 66W 6TH P.M.  
COUNTY ADAMS INDEX REF NUMBER 21-L



RECEIVED AT OFFICE OF THE COUNTY CLERK  
\_\_\_\_\_ COUNTY

BY: \_\_\_\_\_

DATE: \_\_\_\_\_

Record to be filed by Index Reference Number  
Numerically then Alphabetically under

\*\* To be used only for monuments located on county lines