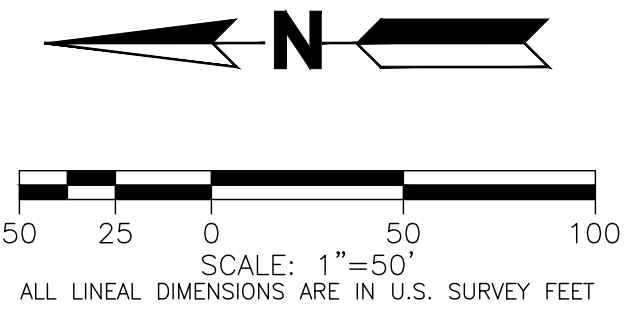
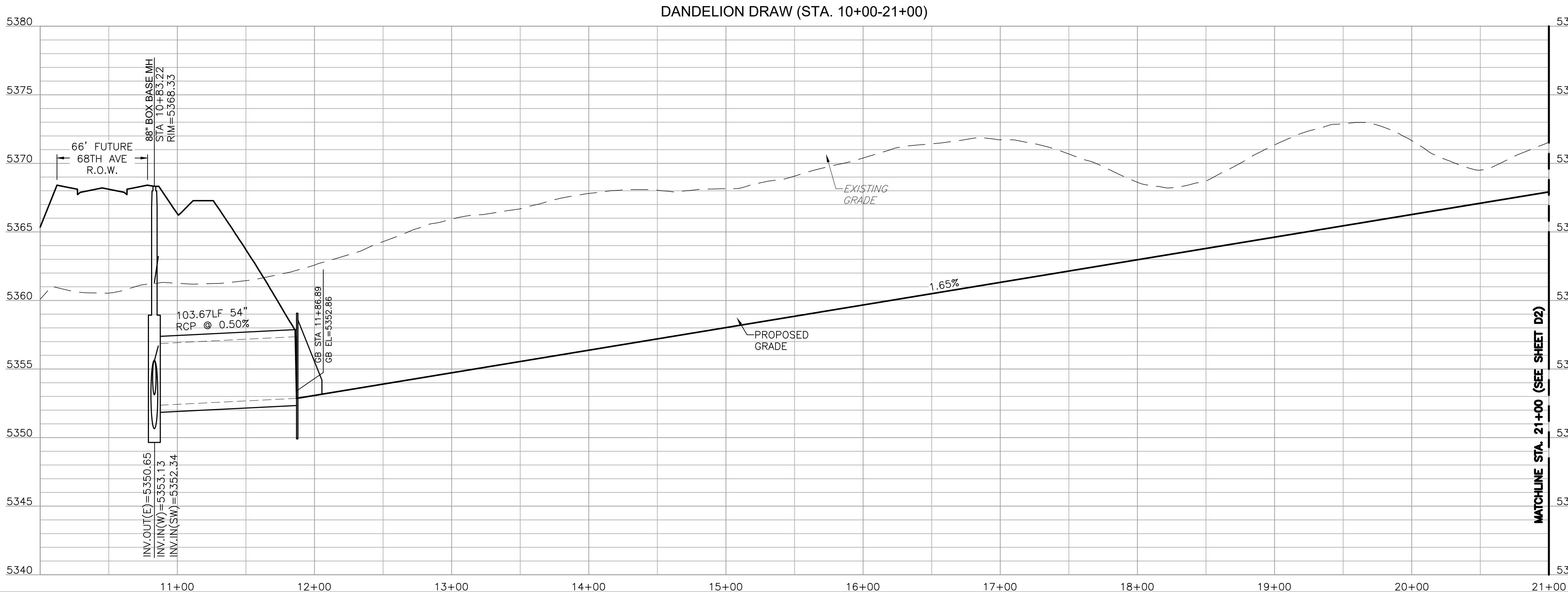
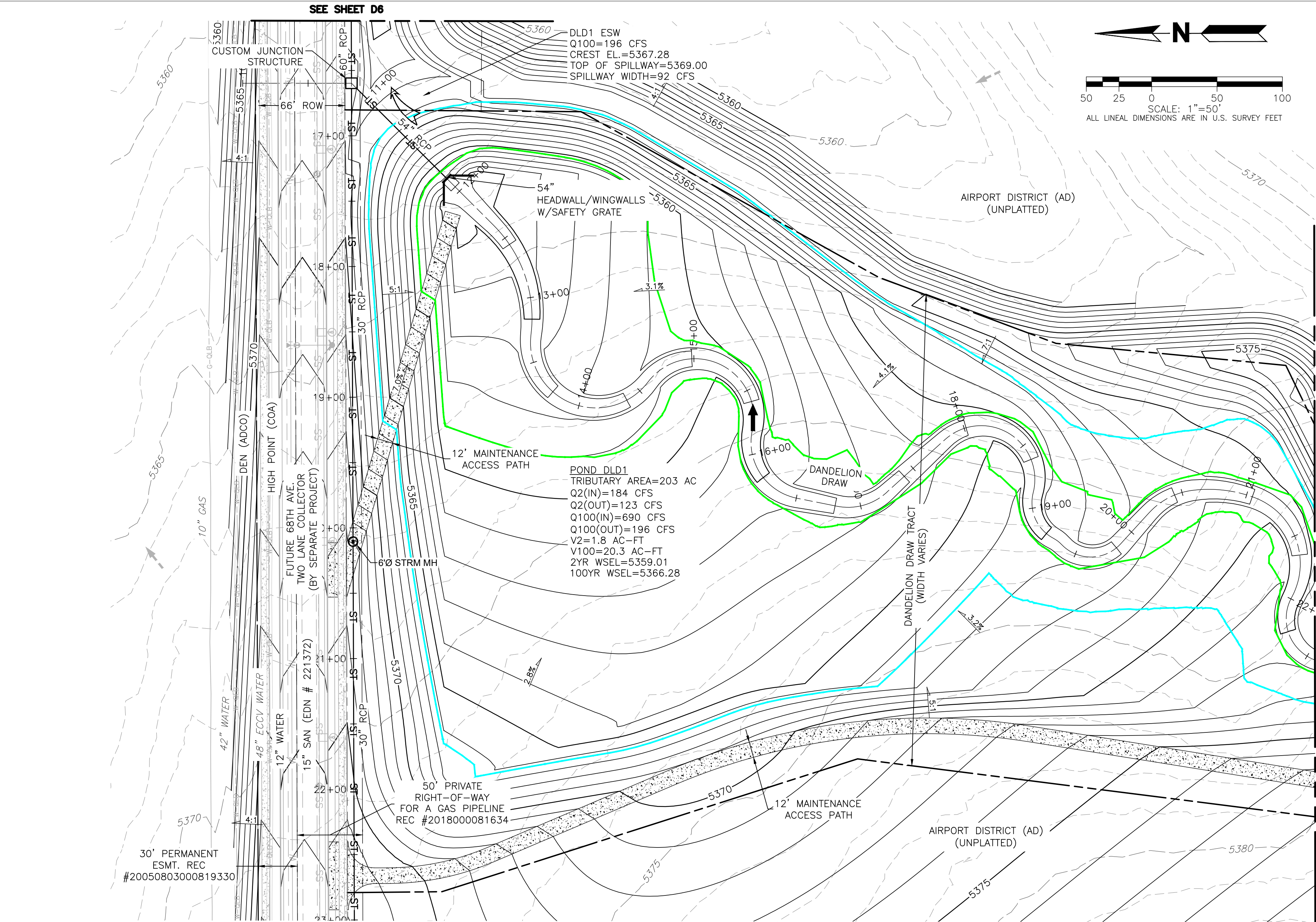


PLOT DATE: Tuesday, July 26, 2022 10:51 AM LAST SAVED BY: EBDNAR
DRAWING LOCATION: C:\HORN\19.1043-High Point - EAST\C19 Dandelion Draw\PLANS\DRAINAGE\DANDELION DRAW PNP.dwg



BENCHMARK

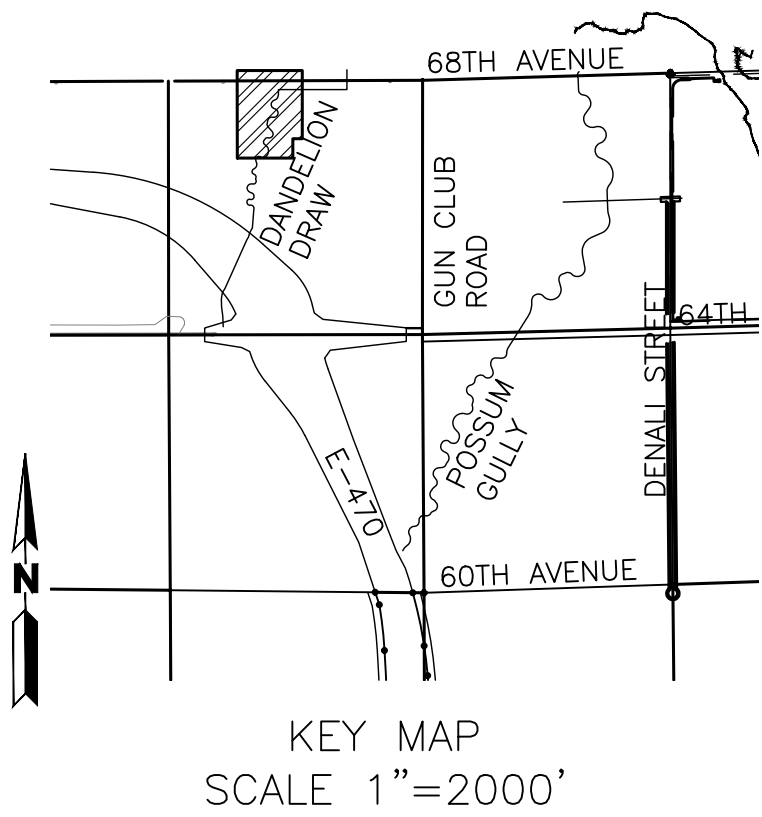
COA ID: 3S6508NW001

ELEVATIONS ARE BASED ON THE CITY OF AURORA AND COUNTY OF ADAMS BENCHMARK #3S6508NW001 A CITY OF AURORA AND COUNTY OF ADAMS 3-1/4" ALUMINUM CAP STAMPED (CITY OF AURORA B.M., 3S6508NW001, 2007). ON A 5' #6 REBAR, IN A 8" PVC PIPE WITH A CAP, LOCATED SOUTHEAST OF THE SECTION CORNER TO SECTIONS 6, 5, 8, 7, TOWNSHIP 3 SOUTH, RANGE 65 WEST, SOUTHEAST OF A YELLOW STEEL CONCRETE POST, SOUTH OF THE CENTERLINE OF A DIRT ROAD (64TH AVENUE) AND EAST OF THE INTERSECTION OF E-470 AND 64TH AVENUE.

ELEVATION = 5394.58' (NAVD1988) DATUM.

BASIS OF BEARING

BEARINGS ARE BASED ON AN ASSUMED BEARING OF S00°33'21"E ALONG THE EASTERLY LINE OF THE SOUTHWEST QUARTER OF SECTION 7, TOWNSHIP 3 SOUTH RANGE 65 WEST OF THE 6TH P.M. BEING MONUMENTED AS A FOUND 3 1/4"ALUMINUM CAP PLS # 25379 IN RANGEBOX AT THE CENTER QUARTER CORNER AND A FOUND 2 1/2"ALUMINUM CAP PLS #28285 AT THE SOUTH QUARTER CORNER.

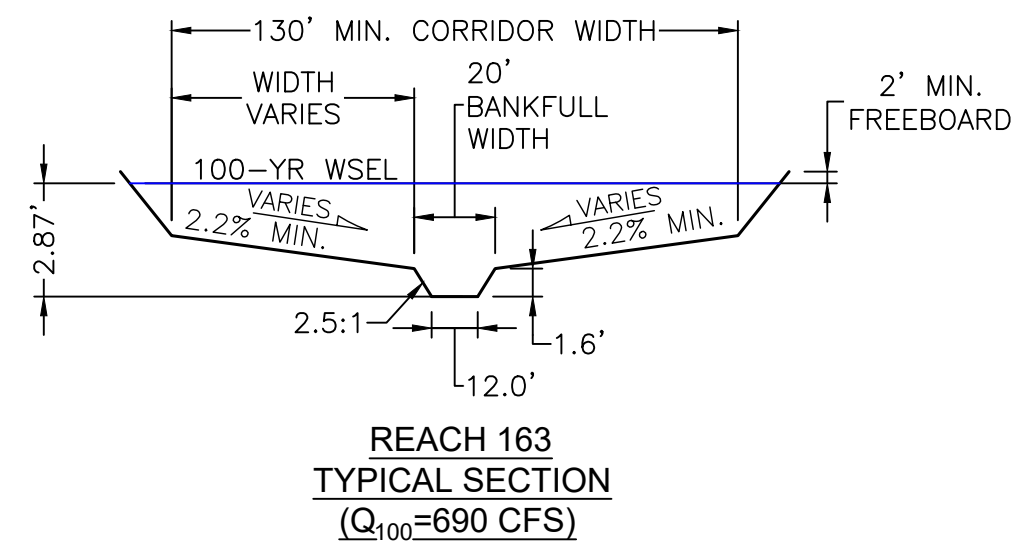


NOTES:

- CITY OF AURORA PLAN REVIEW IS ONLY FOR GENERAL CONFORMANCE WITH CITY OF AURORA DESIGN AND THE CITY CODE. THE CITY IS NOT RESPONSIBLE FOR THE ACCURACY AND ADEQUACY OF THE DESIGN, DIMENSIONS, AND ELEVATIONS WHICH SHALL BE CONFIRMED AND CORRELATED AT THE JOB SITE. THE CITY OF AURORA, THROUGH THE APPROVAL OF THIS DOCUMENT, ASSUMES NO RESPONSIBILITY FOR THE COMPLETENESS AND/OR ACCURACY OF THIS DOCUMENT.
- DESIGN RECURRENCE INTERVAL FOR REGIONAL CHANNEL AND STORM SEWER INFRASTRUCTURE INCLUDED IN THESE PLANS IS FOR A 100-YEAR STORM EVENT.
- DANDELION DRAW STORM SEWER SHOWN ON THESE PLANS WILL BE PUBLICLY OWNED AND MAINTAINED.
- THE DANDELION DRAW POND WILL BE IN A TRACT DEDICATED TO THE CITY OF AURORA WITH MHFD MAINTENANCE ELIGIBILITY.
- EFFECTIVE FIRM PANELS FOR THE STUDY REACH INCLUDE 08001C0665J, 08005C0054L, AND 08005C0062L ADAMS COUNTY, COLORADO AND INCORPORATED AREAS, EFFECTIVE FEBRUARY 17, 2017.
- FUTURE DEVELOPMENTS WILL BE REQUIRED TO PROVIDE A PATH AND A DRAINAGE EASEMENT IS RECOMMENDED FOR EMERGENCY FLOWS CONVEYED FROM PROPOSED SUMP INLETS AND PROPOSED WATER QUALITY DETENTION PONDS.
- THE APPROVED MDR (EDN#220143) REFERENCES A TYPICAL RIFFLE POOL SYSTEM. ULTIMATE DESIGN SLOPES WILL VARY FROM APPROVED MDR AND THIS PRELIMINARY DRAINAGE REPORT.
- FUTURE 68TH AVENUE IMPROVEMENTS (RSN #1549307) ARE BEING COMPLETED UNDER SEPARATE ISP/PDR SUBMITTAL. A PRE-APPLICATION MEETING HAS BEEN COMPLETED FOR THESE IMPROVEMENTS AND THE ISP/PDR IS CURRENTLY IN PROGRESS. 68TH AVENUE ROADWAY GRADES TO BE CONSTRUCTED TO APPROXIMATE FINAL ROADWAY GRADES WHILE AVOIDING CONCENTRATED FLOW PATHS ALONG ROADWAY ALIGNMENT.
- PROPOSED GRADING IS PRELIMINARY AND SUBJECT TO CHANGE DURING THE DESIGN REVIEW PROCESS.
- THE DANDELION DRAW DRAINAGE TRACT AND STORM SEWER OUTFALL HAVE BEEN DESIGNED TO CONVEY THE 100-YEAR STORM EVENT AND WILL BE PUBLICLY OWNED AND MAINTAINED BY THE CITY OF AURORA.

LEGEND

- FUTURE 100-YEAR WSEL
- FUTURE 2-YEAR WSEL
- EURV WSEL
- WQCV WSEL
- EMERGENCY OVERFLOW PATH



CALL 811 2-BUSINESS DAYS IN ADVANCE BEFORE YOU DIG, GRADE OR EXCAVATE FOR MARKING OF UNDERGROUND MEMBER UTILITIES

MARTIN/MARTIN ASSUMES NO RESPONSIBILITY FOR UTILITY LOCATIONS. THE UTILITIES SHOWN ON THIS DRAWING HAVE BEEN PLOTTED FROM (PROVIDED) ASCE (38) UTILITY QUALITY LEVEL (Q_U) AVAILABLE INFORMATION. IT IS, HOWEVER, THE CONTRACTOR'S RESPONSIBILITY TO FIELD VERIFY THE SIZE, MATERIAL, HORIZONTAL AND VERTICAL LOCATION OF ALL UTILITIES (DEPICTED OR NOT DEPICTED) PRIOR TO THE COMMENCEMENT OF ANY CONSTRUCTION.

APPROVED FOR ONE YEAR FROM THIS DATE

City Engineer

Date

Water Department

Date

DANDELION DRAW

PRELIMINARY DRAINAGE REPORT

DANDELION DRAW PLAN & PROFILE

No.	Issue / Revision	Date	Name
1	ISSUED FOR COA REVIEW	02/25/22	M/M
2	ISSUED FOR COA REVIEW	07/26/22	M/M

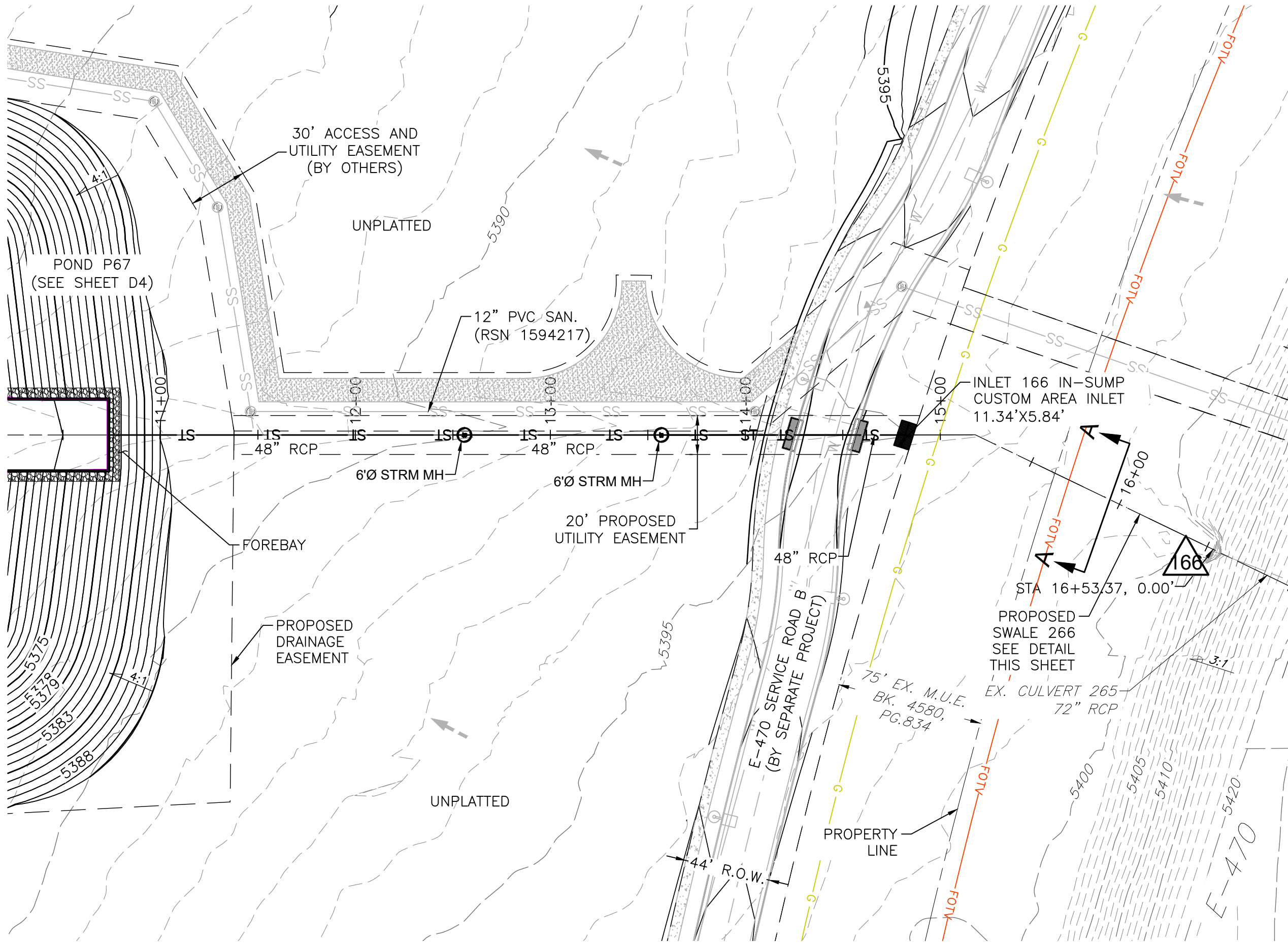
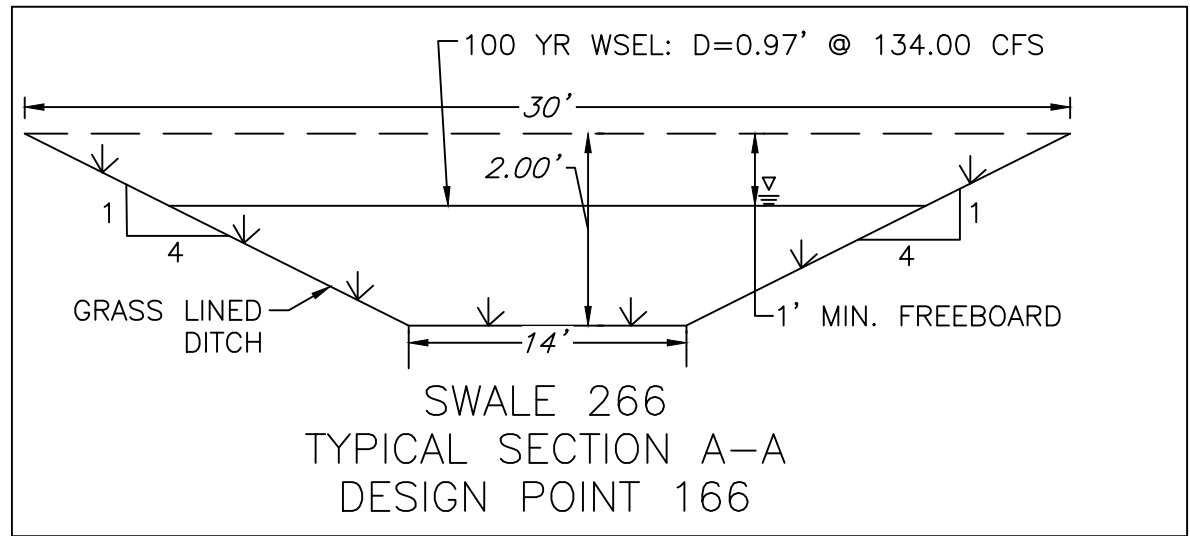
Job Number	19.1043 C19
Project Manager	R. BYRNE
Design By	R. BYRNE
Drawn By	G. KIRALY
Principal In Charge	P. HORN

Sheet Number:

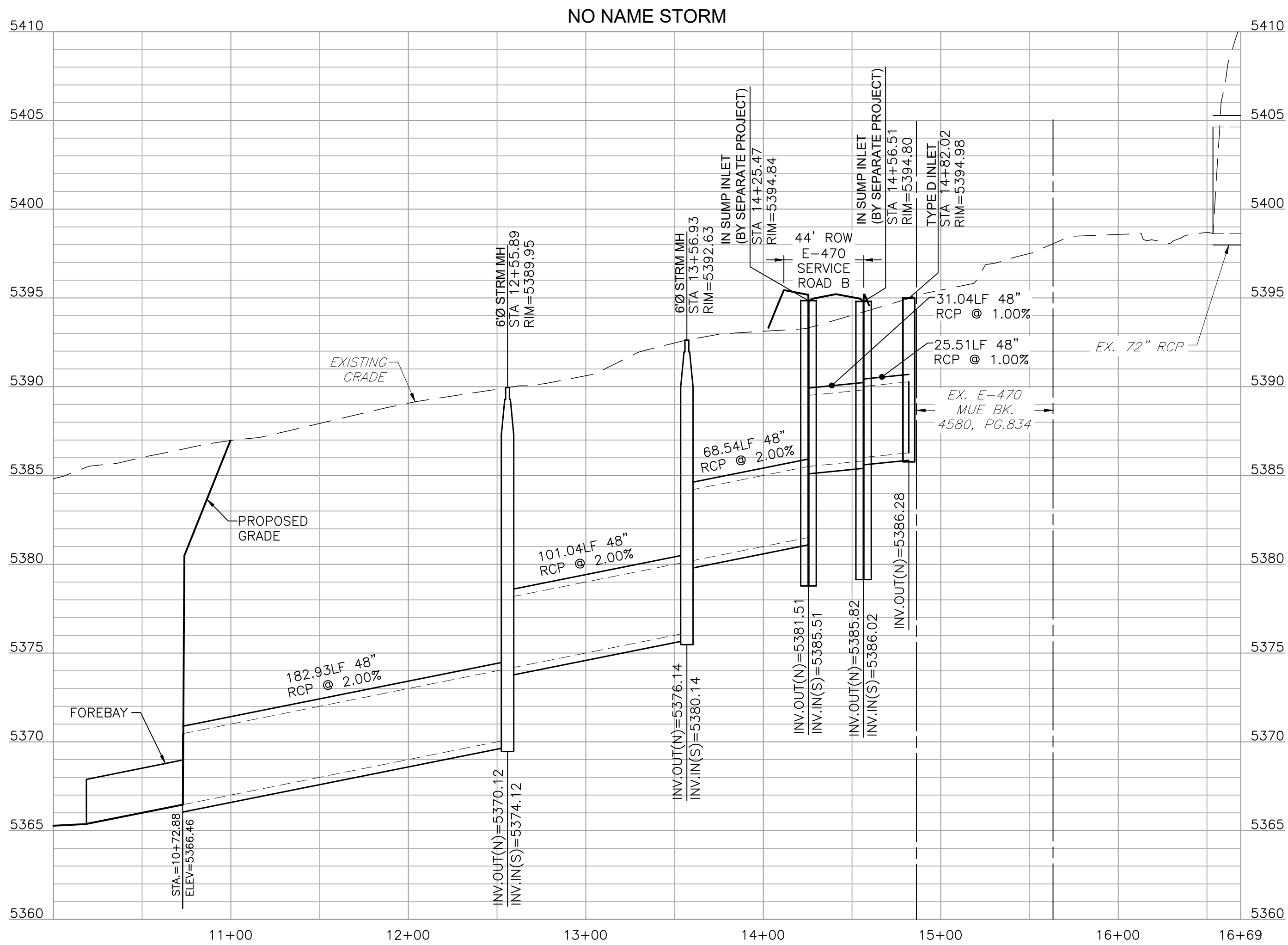
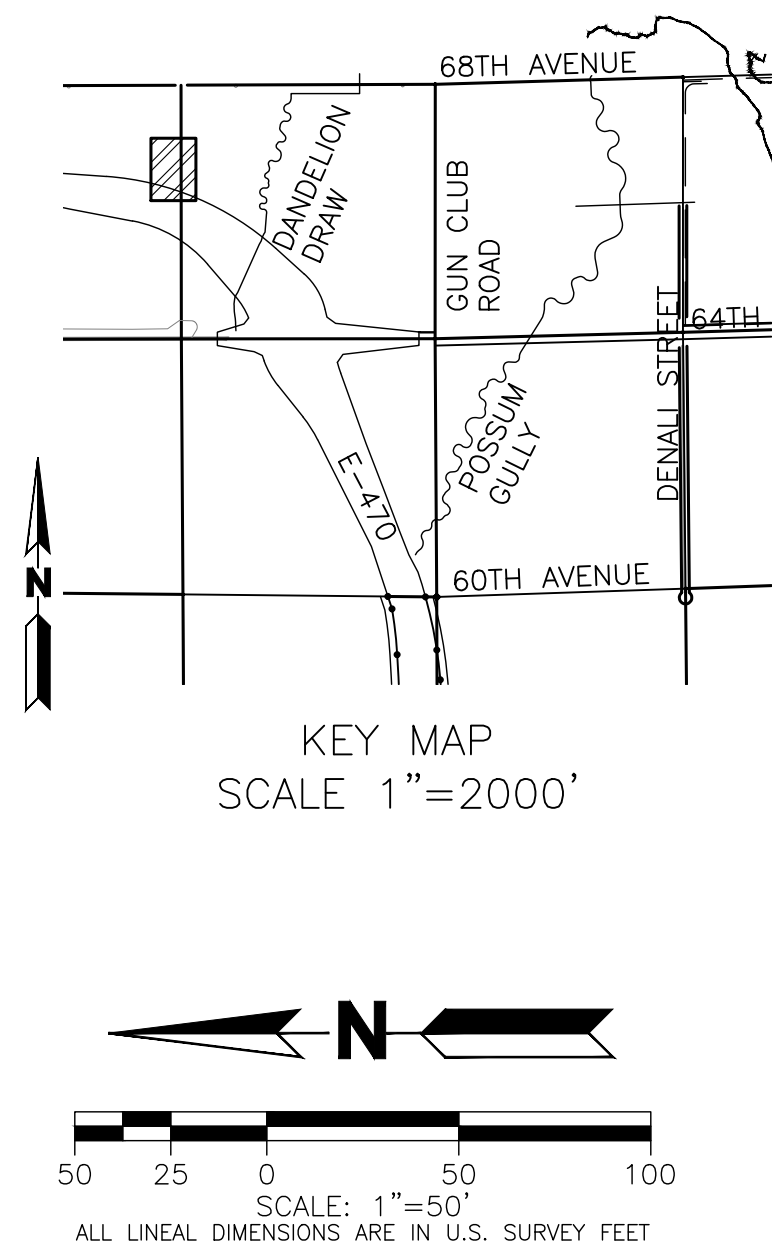
D1

MARTIN/MARTIN
CONSULTING ENGINEERS
12499 WEST COLFAX AVENUE, LAKEWOOD, COLORADO 80215
303.431.6100 MARTINMARTIN.COM

NOT FOR CONSTRUCTION



- NOTES:**
1. CITY OF AURORA PLAN REVIEW IS ONLY FOR GENERAL CONFORMANCE WITH CITY OF AURORA DESIGN AND THE CITY CODE. THE CITY IS NOT RESPONSIBLE FOR THE ACCURACY AND ADEQUACY OF THE DESIGN, DIMENSIONS, AND ELEVATIONS WHICH SHALL BE CONFIRMED AND CORRELATED AT THE JOB SITE. THE CITY OF AURORA, THROUGH THE APPROVAL OF THIS DOCUMENT, ASSUMES NO RESPONSIBILITY FOR THE COMPLETENESS AND/OR ACCURACY OF THIS DOCUMENT.
 2. DESIGN RECURRENCE INTERVAL FOR REGIONAL CHANNEL AND STORM SEWER INFRASTRUCTURE INCLUDED IN THESE PLANS IS FOR A 100-YEAR STORM EVENT.
 3. STORM SEWER SHOWN ON THESE PLANS WILL BE PUBLICLY OWNED AND MAINTAINED.
 4. EFFECTIVE FIRM PANELS FOR THE STUDY REACH INCLUDE 08001C0665J, 08005C0054L, AND 08005C0062L ADAMS COUNTY, COLORADO AND INCORPORATED AREAS, EFFECTIVE FEBRUARY 17, 2017.
 5. FUTURE DEVELOPMENTS WILL BE REQUIRED TO PROVIDE A PATH AND A DRAINAGE EASEMENT IS RECOMMENDED FOR EMERGENCY FLOWS CONVEYED FROM PROPOSED SUMP INLETS AND PROPOSED WATER QUALITY DETENTION PONDS.
 6. FUTURE 68TH AVENUE IMPROVEMENTS (RSN #1549307) ARE BEING COMPLETED UNDER SEPARATE ISP/PDR SUBMITTAL. A PRE-APPLICATION MEETING HAS BEEN COMPLETED FOR THESE IMPROVEMENTS AND THE ISP/PDR IS CURRENTLY IN PROGRESS. 68TH AVENUE ROADWAY GRADES TO BE CONSTRUCTED TO APPROXIMATE FINAL ROADWAY GRADES WHILE AVOIDING CONCENTRATED FLOW PATHS ALONG ROADWAY ALIGNMENT.
 7. PROPOSED GRADING IS PRELIMINARY AND SUBJECT TO CHANGE DURING THE DESIGN REVIEW PROCESS.



LEGEND

- FUTURE 100-YEAR WSEL
- FUTURE 2-YEAR WSEL
- EURV POND WSEL
- WQCV POND WSEL
- EMERGENCY OVERFLOW PATH

BENCHMARK

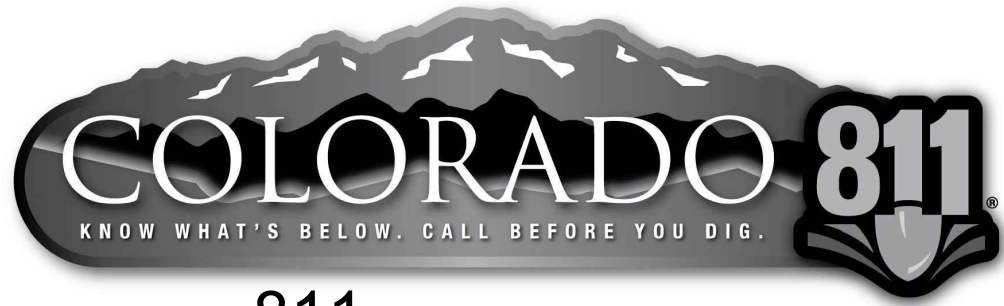
COA ID: 3S6508NW001

ELEVATIONS ARE BASED ON THE CITY OF AURORA AND COUNTY OF ADAMS BENCHMARK #3S6508NW001 A CITY OF AURORA AND COUNTY OF ADAMS 3-1/4" ALUMINUM CAP STAMPED (CITY OF AURORA B.M., 3S6508NW001, 2007). ON A 5' #6 REBAR, IN A 8" PVC PIPE WITH A CAP, LOCATED SOUTHEAST OF THE SECTION CORNER TO SECTIONS 6, 5, 8, 7, TOWNSHIP 3 SOUTH, RANGE 65 WEST, SOUTHEAST OF A YELLOW STEEL CONCRETE POST, SOUTH OF THE CENTERLINE OF A DIRT ROAD (64TH AVENUE) AND EAST OF THE INTERSECTION OF E-470 AND 64TH AVENUE.

ELEVATION =5394.58' (NAVD1988) DATUM.

BASIS OF BEARING

BEARINGS ARE BASED ON AN ASSUMED BEARING OF S00°33'21"E ALONG THE EASTERLY LINE OF THE SOUTHWEST QUARTER OF SECTION 7, TOWNSHIP 3 SOUTH RANGE 65 WEST OF THE 6TH P.M. BEING MONUMENTED AS A FOUND 3 1/4"ALUMINUM CAP PLS # 25379 IN RANGEBOX AT THE CENTER QUARTER CORNER AND A FOUND 2 1/2"ALUMINUM CAP PLS #28285 AT THE SOUTH QUARTER CORNER.



CALL **811** 2-BUSINESS DAYS IN ADVANCE
BEFORE YOU DIG, GRADE OR EXCAVATE FOR
MARKING OF UNDERGROUND MEMBER UTILITIES

MARTIN/MARTIN ASSUMES NO RESPONSIBILITY FOR UTILITY LOCATIONS. THE UTILITIES SHOWN ON THIS DRAWING HAVE BEEN PLOTTED FROM (PROVIDED) ASCE (38) UTILITY QUALITY LEVEL D (Q_U) AVAILABLE INFORMATION. IT IS, HOWEVER, THE CONTRACTORS RESPONSIBILITY TO FIELD VERIFY THE SIZE, MATERIAL, HORIZONTAL AND VERTICAL LOCATION OF ALL UTILITIES (DEPICTED OR NOT DEPICTED) PRIOR TO THE COMMENCEMENT OF ANY CONSTRUCTION.

DANDELION DRAW

PRELIMINARY DRAINAGE REPORT

NO NAME STORM PLAN & PROFILE

No.	Issue / Revision	Date	Name
1	ISSUED FOR COA REVIEW	02/25/22	M/M
2	ISSUED FOR COA REVIEW	07/26/22	M/M

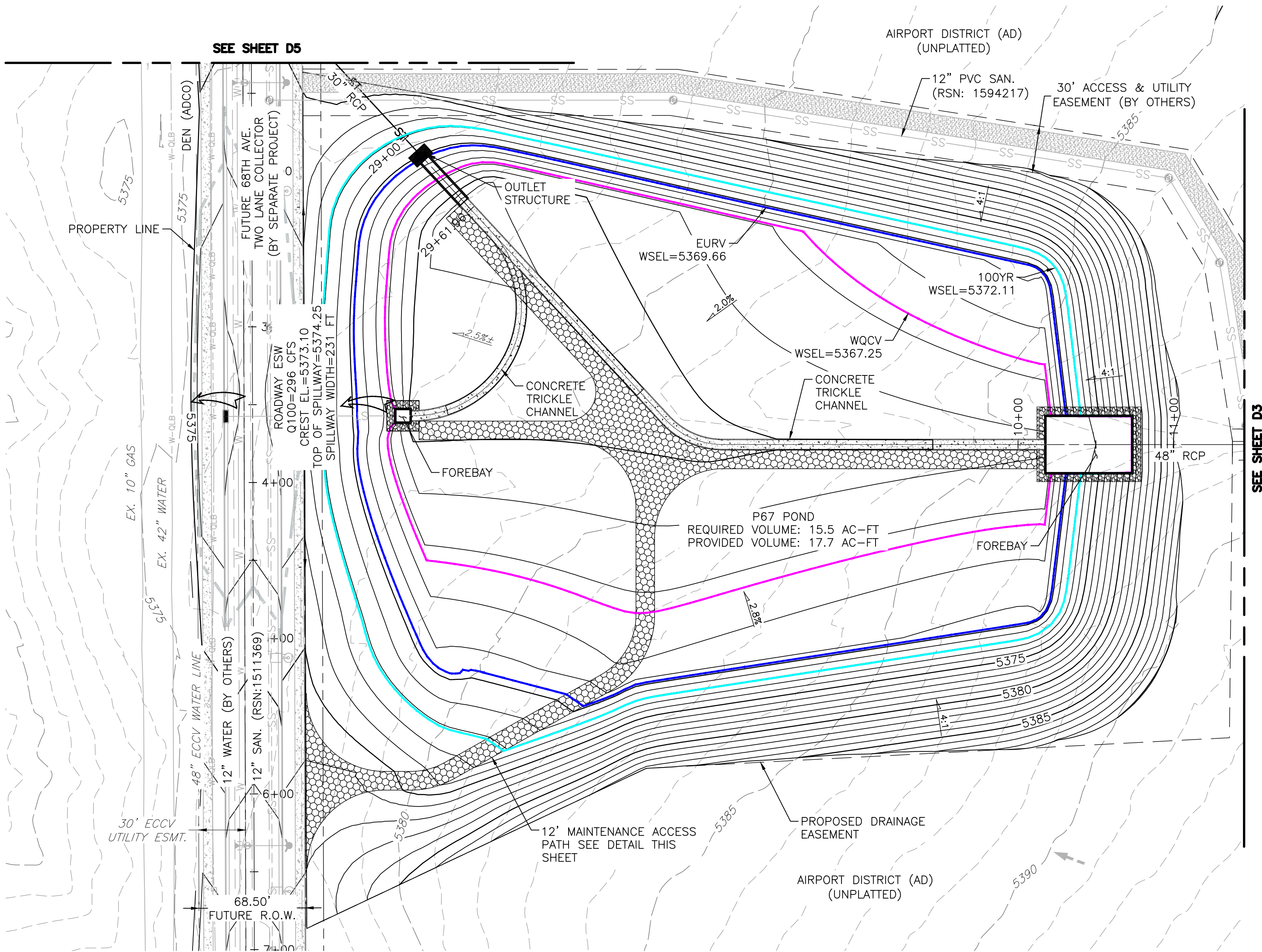
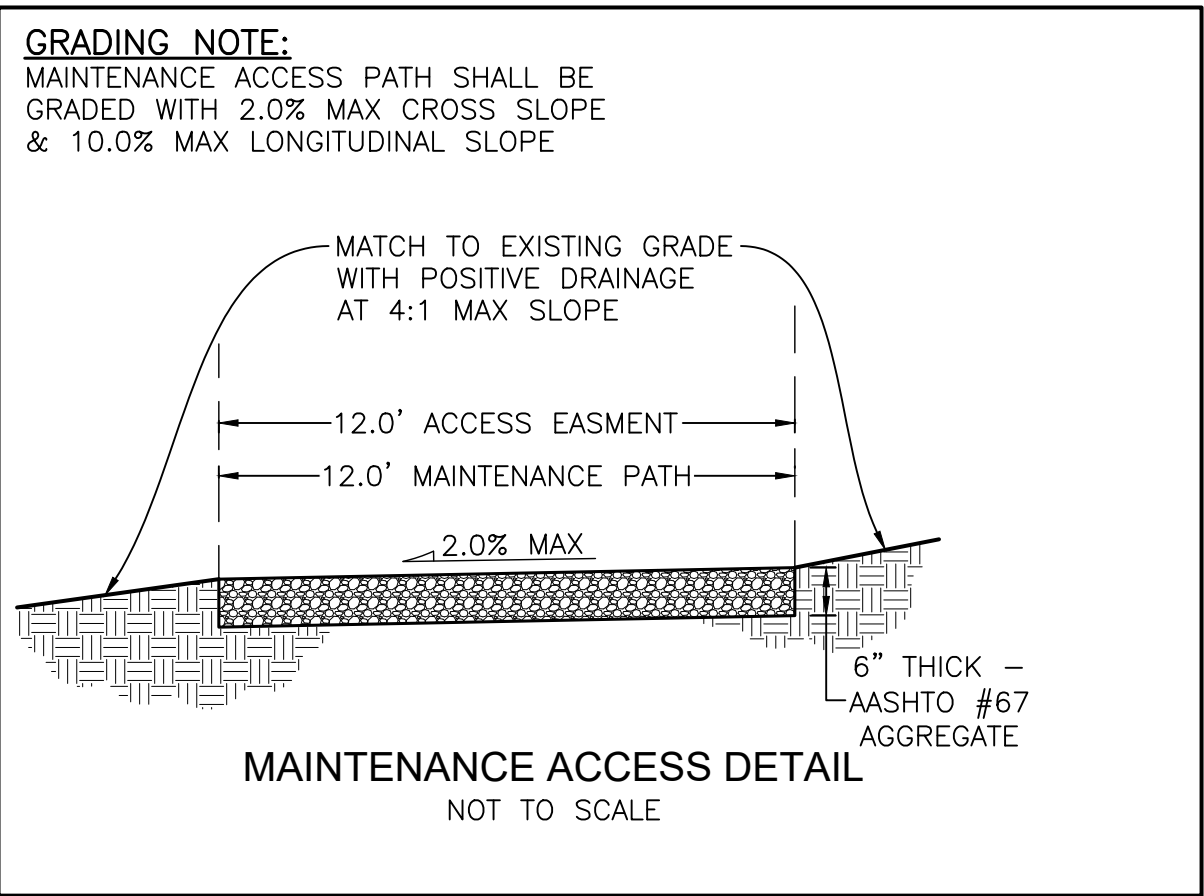
Job Number	19.1043 C19
Project Manager	R. BYRNE
Design By	R. BYRNE
Drawn By	G. KIRALY
Principal In Charge	P. HORN

Sheet Number:

D3

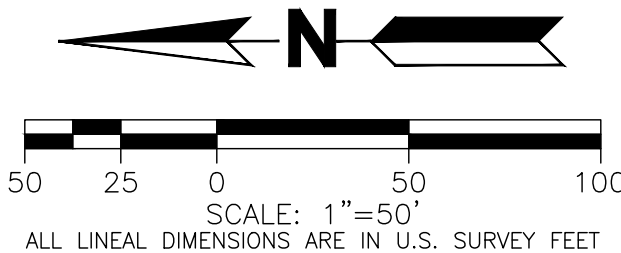
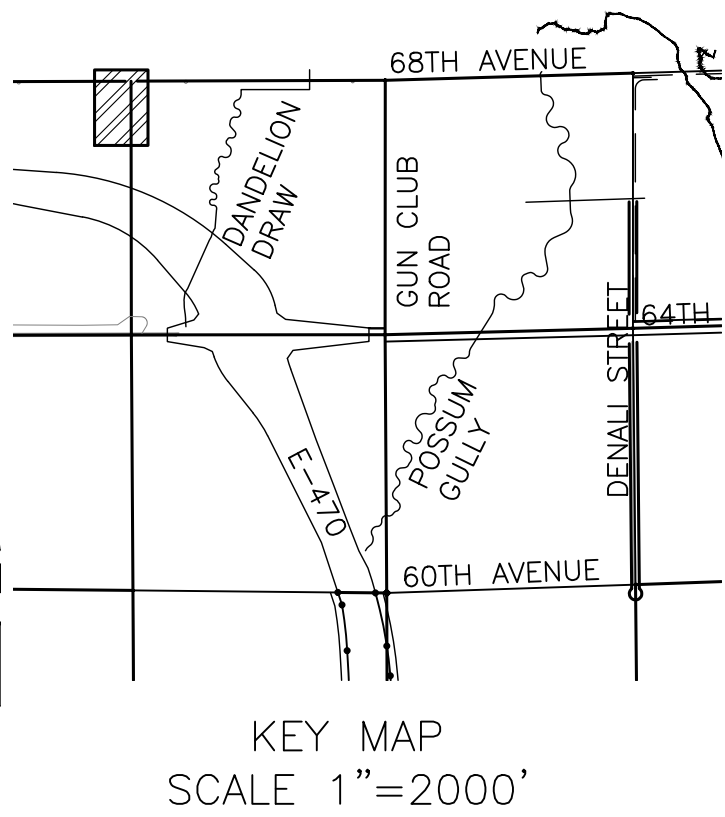
POND SUMMARY*					
WQCV (AC-FT)	EURV (AC-FT)	100-YR DETENTION VOLUME (AC-FT)	100-YR RELEASE RATE (CFS)	TOP OF POND ELEVATION	SPILLWAY WEIR ELEVATION
3.42	9.74	17.75	56.4	5375.00	5374.25

*DUE TO THE PROXIMITY TO DIA, NO NAME POND MUST BE DESIGNED TO RELEASE STORM RUNOFF WITHIN 40 HOURS FOR ALL STORM EVENTS. FOR THE FINAL DRAINAGE REPORT AND CIVIL PLANS MARTIN/MARTIN WILL ATTEMPT TO OPTIMIZE THE OUTLET STRUCTURE ORIFICES TO MAXIMIZE THE DRAIN TIME WITHIN THE ALLOWABLE LIMITS TO GET THE DISCHARGE RATIOS AS LOW AS POSSIBLE.



NOTES:

- CITY OF AURORA PLAN REVIEW IS ONLY FOR GENERAL CONFORMANCE WITH CITY OF AURORA DESIGN AND THE CITY CODE. THE CITY IS NOT RESPONSIBLE FOR THE ACCURACY AND ADEQUACY OF THE DESIGN, DIMENSIONS, AND ELEVATIONS WHICH SHALL BE CONFIRMED AND CORRELATED AT THE JOB SITE. THE CITY OF AURORA, THROUGH THE APPROVAL OF THIS DOCUMENT, ASSUMES NO RESPONSIBILITY FOR THE COMPLETENESS AND/OR ACCURACY OF THIS DOCUMENT.
- DESIGN RECURRENCE INTERVAL FOR REGIONAL CHANNEL AND STORM SEWER INFRASTRUCTURE INCLUDED IN THESE PLANS IS FOR A 100-YEAR STORM EVENT.
- STORM SEWER SHOWN ON THESE PLANS HAS BEEN SIZED TO CONVEY THE 100-YEAR STORM EVENT AND WILL BE PUBLICLY OWNED AND MAINTAINED BY THE CITY OF AURORA.
- EFFECTIVE FIRM PANELS FOR THE STUDY REACH INCLUDE 08001C0665J, 08005C0054L, AND 08005C0062L ADAMS COUNTY, COLORADO AND INCORPORATED AREAS, EFFECTIVE FEBRUARY 17, 2017.
- FUTURE DEVELOPMENTS WILL BE REQUIRED TO PROVIDE A PATH AND A DRAINAGE EASEMENT IS RECOMMENDED FOR EMERGENCY FLOWS CONVEYED FROM PROPOSED SUMP INLETS AND PROPOSED WATER QUALITY DETENTION PONDS.
- FUTURE 68TH AVENUE IMPROVEMENTS (RSN #1549307) ARE BEING COMPLETED UNDER SEPARATE ISP/PDR SUBMITTAL. A PRE-APPLICATION MEETING HAS BEEN COMPLETED FOR THESE IMPROVEMENTS AND THE ISP/PDR IS CURRENTLY IN PROGRESS. 68TH AVENUE ROADWAY GRADES TO BE CONSTRUCTED TO APPROXIMATE FINAL ROADWAY GRADES WHILE AVOIDING CONCENTRATED FLOW PATHS ALONG ROADWAY ALIGNMENT.



LEGEND

- FUTURE 100-YEAR WSEL
- FUTURE 2-YEAR WSEL
- EURV POND WSEL
- WQCV POND WSEL
- EMERGENCY OVERFLOW PATH

BENCHMARK

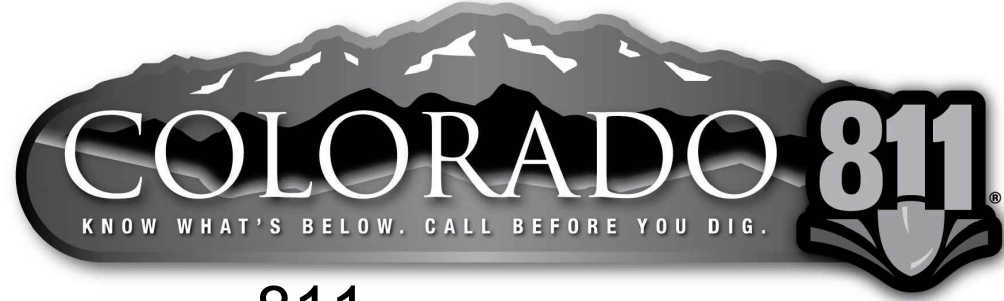
COA ID: 3S6508NW001

ELEVATIONS ARE BASED ON THE CITY OF AURORA AND COUNTY OF ADAMS BENCHMARK #3S6508NW001 A CITY OF AURORA AND COUNTY OF ADAMS 3-1/4" ALUMINUM CAP STAMPED (CITY OF AURORA B.M., 3S6508NW001, 2007). ON A 5' #6 REBAR, IN A 8" PVC PIPE WITH A CAP, LOCATED SOUTHEAST OF THE SECTION CORNER TO SECTIONS 6, 5, 8, 7, TOWNSHIP 3 SOUTH, RANGE 65 WEST, SOUTHEAST OF A YELLOW STEEL CONCRETE POST, SOUTH OF THE CENTERLINE OF A DIRT ROAD (64TH AVENUE) AND EAST OF THE INTERSECTION OF E-470 AND 64TH AVENUE.

ELEVATION =5394.58' (NAVD1988) DATUM.

BASIS OF BEARING

BEARINGS ARE BASED ON AN ASSUMED BEARING OF S00°33'21"E ALONG THE EASTERLY LINE OF THE SOUTHWEST QUARTER OF SECTION 7, TOWNSHIP 3 SOUTH RANGE 65 WEST OF THE 6TH P.M. BEING MONUMENTED AS A FOUND 3 1/4"ALUMINUM CAP PLS # 25379 IN RANGEBOX AT THE CENTER QUARTER CORNER AND A FOUND 2 1/2"ALUMINUM CAP PLS #28285 AT THE SOUTH QUARTER CORNER.



CALL 811 2-BUSINESS DAYS IN ADVANCE BEFORE YOU DIG, GRADE OR EXCAVATE FOR MARKING OF UNDERGROUND MEMBER UTILITIES

MARTIN/MARTIN ASSUMES NO RESPONSIBILITY FOR UTILITY LOCATIONS. THE UTILITIES SHOWN ON THIS DRAWING HAVE BEEN PLOTTED FROM (PROVIDED) ASCE (38) UTILITY QUALITY LEVEL D (Q_U) AVAILABLE INFORMATION. IT IS, HOWEVER, THE CONTRACTORS RESPONSIBILITY TO FIELD VERIFY THE SIZE, MATERIAL, HORIZONTAL AND VERTICAL LOCATION OF ALL UTILITIES (DEPICTED OR NOT DEPICTED) PRIOR TO THE COMMENCEMENT OF ANY CONSTRUCTION.

DANELION DRAW

PRELIMINARY DRAINAGE REPORT

P67 POND PLAN

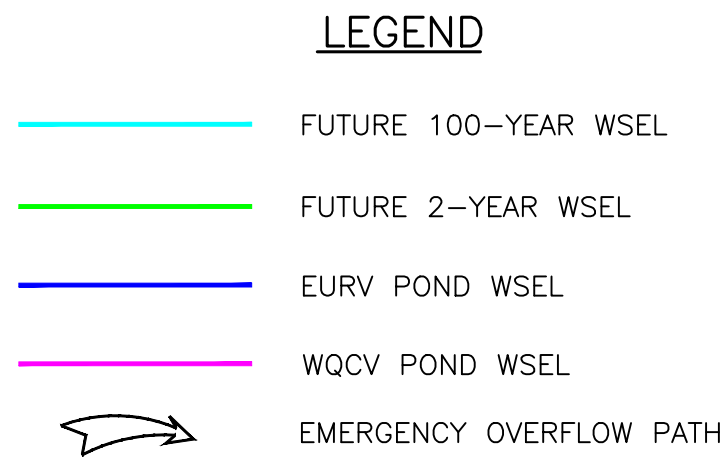
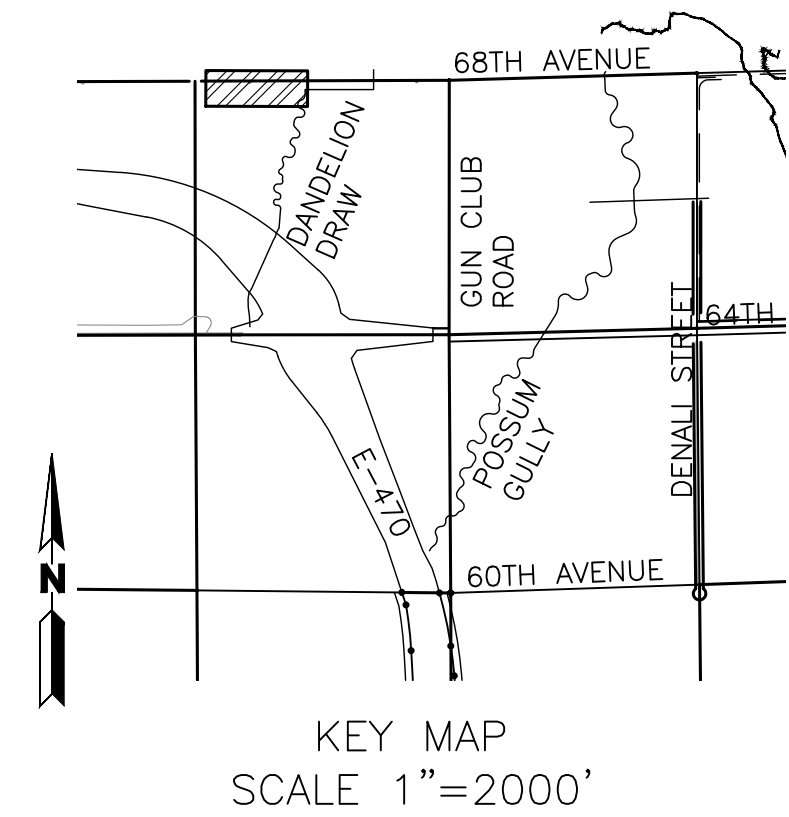
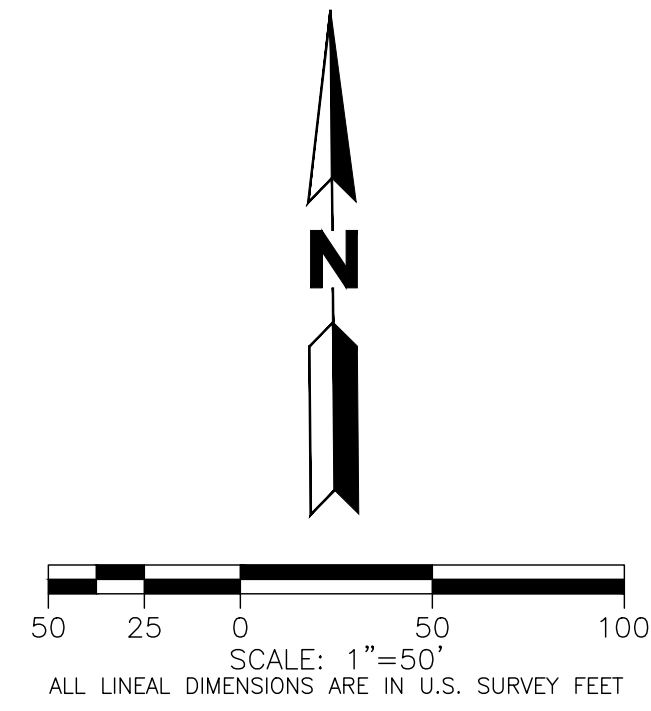
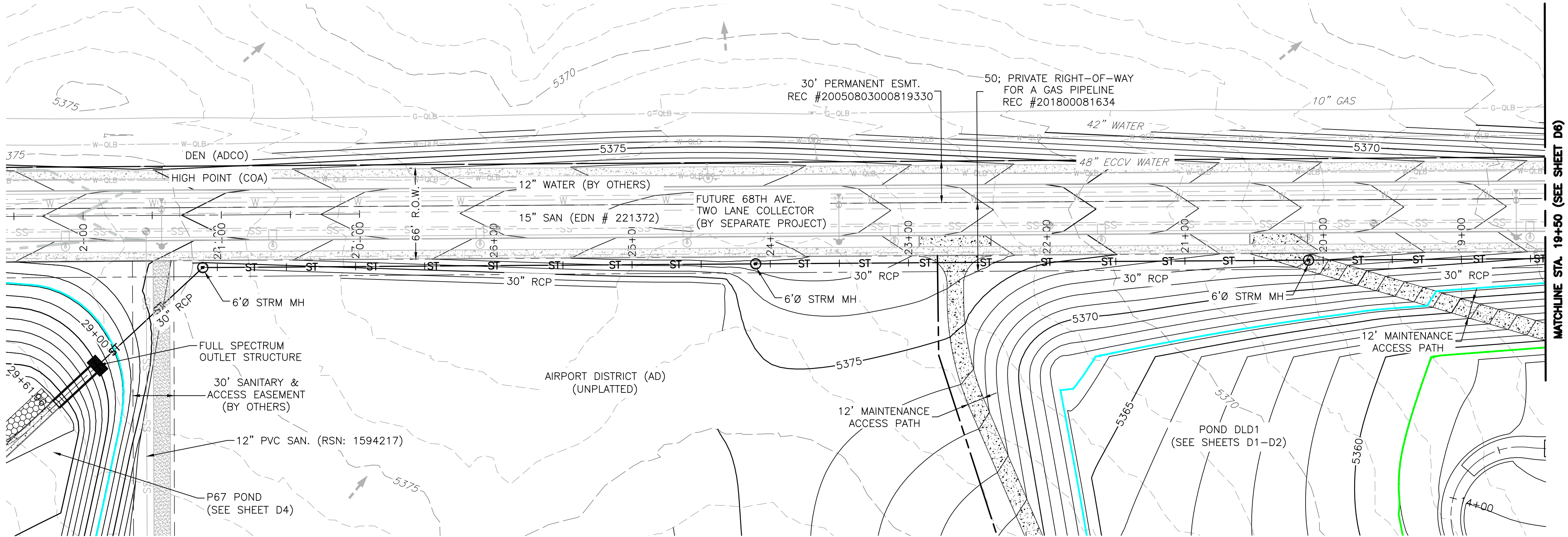
No.	Issue / Revision	Date	Name
1	ISSUED FOR COA REVIEW	02/25/22	M/W
2	ISSUED FOR COA REVIEW	07/26/22	M/W

Job Number	19.1043 C19
Project Manager	R. BYRNE
Design By	R. BYRNE
Drawn By	G. KIRALY
Principal In Charge	P. HORN

Sheet Number:

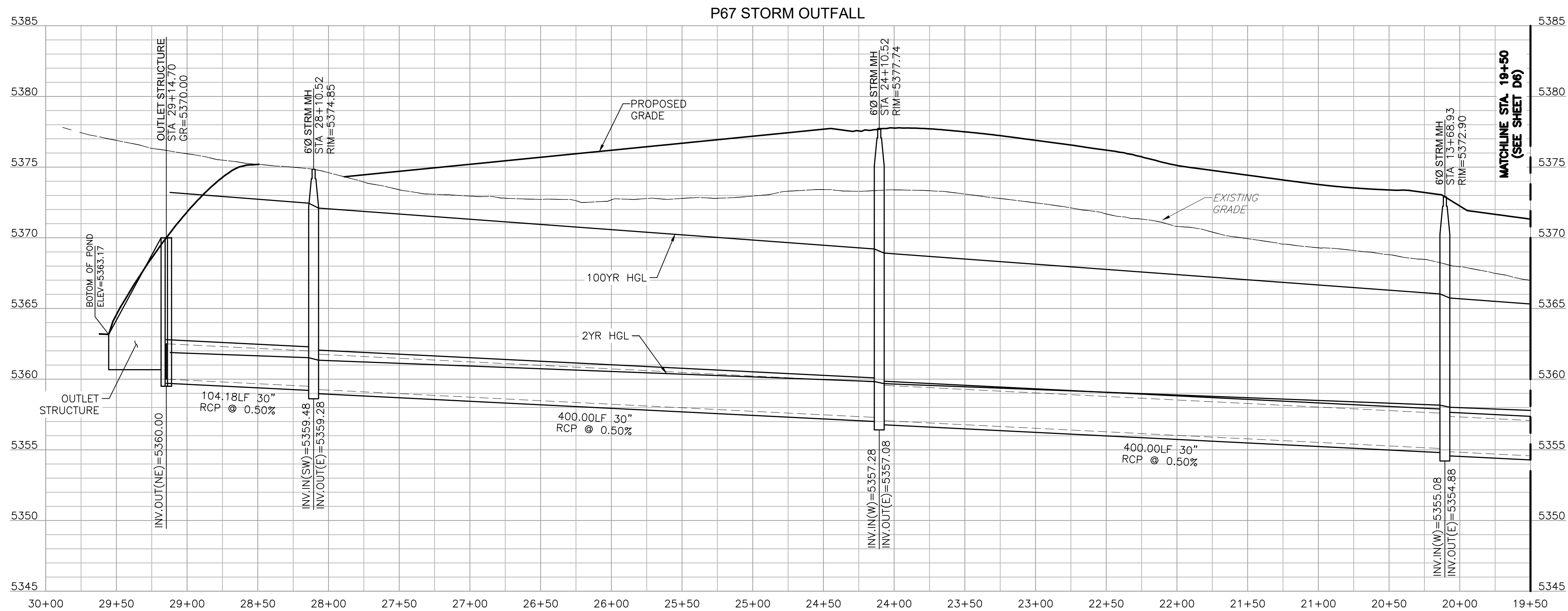
D4

PLOT DATE: Tuesday, July 26, 2022 10:55 AM LAST SAVED BY: EBDNAR
DRAWING LOCATION: C:\HORN\19.1043-High Point - EAST\C19 Dandelion Draw PNP.dwg



CALL **811** 2-BUSINESS DAYS IN ADVANCE
BEFORE YOU DIG, GRADE OR EXCAVATE FOR
MARKING OF UNDERGROUND MEMBER UTILITIES

MARTIN/MARTIN ASSUMES NO RESPONSIBILITY FOR UTILITY LOCATIONS. THE UTILITIES SHOWN ON THIS DRAWING HAVE BEEN PLOTTED FROM (PROVIDED) ASCE (38) UTILITY QUALITY LEVEL D (Q_u) AVAILABLE INFORMATION. IT IS, HOWEVER, THE CONTRACTORS RESPONSIBILITY TO FIELD VERIFY THE SIZE, MATERIAL, HORIZONTAL AND VERTICAL LOCATION OF ALL UTILITIES (DEPICTED OR NOT DEPICTED) PRIOR TO THE COMMENCEMENT OF ANY CONSTRUCTION.



NOTES:

- CITY OF AURORA PLAN REVIEW IS ONLY FOR GENERAL CONFORMANCE WITH CITY OF AURORA DESIGN AND THE CITY CODE. THE CITY IS NOT RESPONSIBLE FOR THE ACCURACY AND ADEQUACY OF THE DESIGN, DIMENSIONS, AND ELEVATIONS WHICH SHALL BE CONFIRMED AND CORRELATED AT THE JOB SITE. THE CITY OF AURORA, THROUGH THE APPROVAL OF THIS DOCUMENT, ASSUMES NO RESPONSIBILITY FOR THE COMPLETENESS AND/OR ACCURACY OF THIS DOCUMENT.
- DESIGN RECURRENCE INTERVAL FOR REGIONAL CHANNEL AND STORM SEWER INFRASTRUCTURE INCLUDED IN THESE PLANS IS FOR A 100-YEAR STORM EVENT.
- DANDELION DRAW STORM SEWER SHOWN ON THESE PLANS WILL BE PUBLICLY OWNED AND MAINTAINED.
- EFFECTIVE FIRM PANELS FOR THE STUDY REACH INCLUDE 08001C0665J, 08005C0054L, AND 08005C0062L ADAMS COUNTY, COLORADO AND INCORPORATED AREAS, EFFECTIVE FEBRUARY 17, 2017.
- FUTURE DEVELOPMENTS WILL BE REQUIRED TO PROVIDE A PATH AND A DRAINAGE EASEMENT IS RECOMMENDED FOR EMERGENCY FLOWS CONVEYED FROM PROPOSED SUMP INLETS AND PROPOSED WATER QUALITY DETENTION PONDS.
- THE APPROVED MDR (EDN#220143) REFERENCES A TYPICAL RIFFLE POOL SYSTEM. ULTIMATE DESIGN SLOPES WILL VARY FROM APPROVED MDR AND THIS PRELIMINARY DRAINAGE REPORT.
- FUTURE 68TH AVENUE IMPROVEMENTS (RSN #1549307) ARE BEING COMPLETED UNDER SEPARATE ISP/PDR SUBMITTAL. A PRE-APPLICATION MEETING HAS BEEN COMPLETED FOR THESE IMPROVEMENTS AND THE ISP/PDR IS CURRENTLY IN PROGRESS. 68TH AVENUE ROADWAY GRADES TO BE CONSTRUCTED TO APPROXIMATE FINAL ROADWAY GRADES WHILE AVOIDING CONCENTRATED FLOW PATHS ALONG ROADWAY ALIGNMENT.
- PROPOSED GRADING IS PRELIMINARY AND SUBJECT TO CHANGE DURING THE DESIGN REVIEW PROCESS.
- THE DANDELION DRAW DRAINAGE TRACT AND STORM SEWER OUTFALL HAVE BEEN DESIGNED TO CONVEY THE 100-YEAR STORM EVENT AND WILL BE PUBLICLY OWNED AND MAINTAINED BY THE CITY OF AURORA.

BENCHMARK

COA ID: 3S6508NW001

ELEVATIONS ARE BASED ON THE CITY OF AURORA AND COUNTY OF ADAMS BENCHMARK #3S6508NW001 A CITY OF AURORA AND COUNTY OF ADAMS 3-1/4" ALUMINUM CAP STAMPED (CITY OF AURORA B.M., 3S6508NW001, 2007). ON A 5' #6 REBAR, IN A 8" PVC PIPE WITH A CAP, LOCATED SOUTHEAST OF THE SECTION CORNER TO SECTIONS 6, 5, 8, 7, TOWNSHIP 3 SOUTH, RANGE 65 WEST, SOUTHEAST OF A YELLOW STEEL CONCRETE POST, SOUTH OF THE CENTERLINE OF A DIRT ROAD (64TH AVENUE) AND EAST OF THE INTERSECTION OF E-470 AND 64TH AVENUE.

ELEVATION =5394.58' (NAVD1988) DATUM.

BASIS OF BEARING

BEARINGS ARE BASED ON AN ASSUMED BEARING OF S00°33'21"E ALONG THE EASTERLY LINE OF THE SOUTHWEST QUARTER OF SECTION 7, TOWNSHIP 3 SOUTH RANGE 65 WEST OF THE 6TH P.M. BEING MONUMENTED AS A FOUND 3 1/4"ALUMINUM CAP PLS # 25379 IN RANGEBOX AT THE CENTER QUARTER CORNER AND A FOUND 2 1/2"ALUMINUM CAP PLS #28285 AT THE SOUTH QUARTER CORNER.

DANDELION DRAW

PRELIMINARY DRAINAGE REPORT

68TH AVE PLAN & PROFILE

No.	Issue / Revision	Date	Name
1	ISSUED FOR COA REVIEW	02/25/22	M/W
2	ISSUED FOR COA REVIEW	07/26/22	M/W

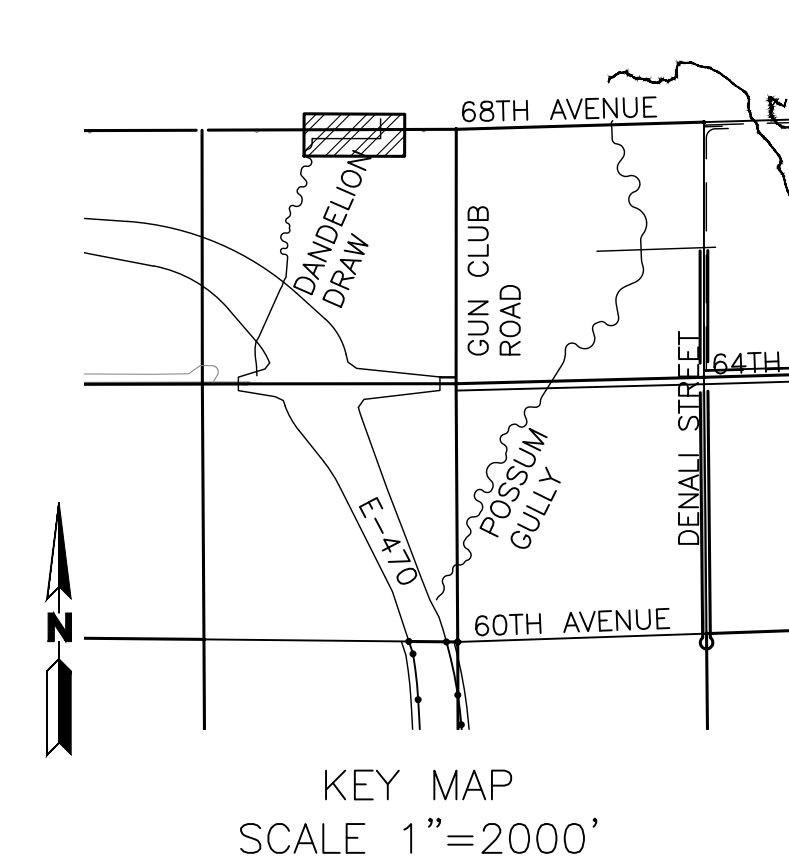
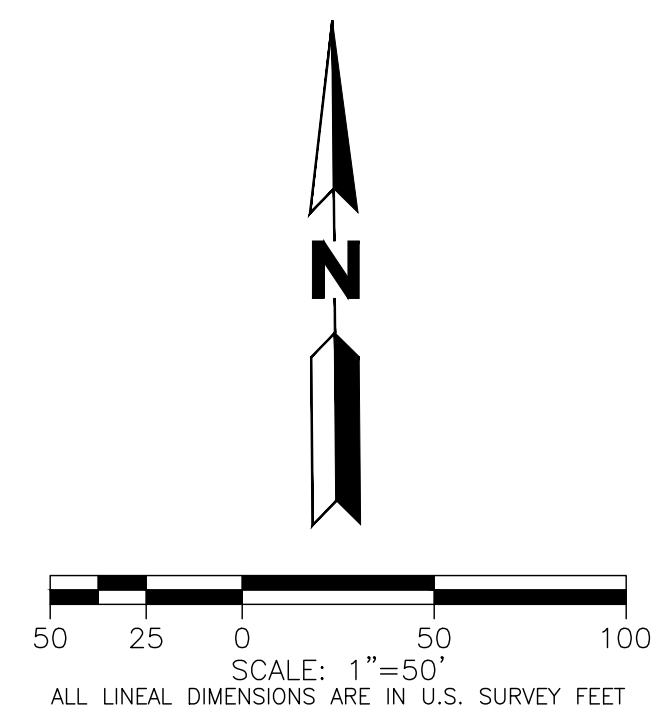
Job Number	19.1043 C19
Project Manager	R. BYRNE
Design By	R. BYRNE
Drawn By	G. KIRALY
Principal In Charge	P. HORN

Sheet Number:

D5

MARTIN/MARTIN
CONSULTING ENGINEERS
12495 WEST COLFAX AVENUE, LAKEWOOD, COLORADO 80215
303.431.6100 MARTINMARTIN.COM




NOT FOR CONSTRUCTION



MARTIN/MARTIN
CONSULTING ENGINEERS

12499 WEST COLFAX AVENUE, LAKEWOOD, COLORADO 80215
303.431.6100 MARTINMARTIN.COM

NOT FOR CONSTRUCTION

 FUTURE 100-YEAR WSEL
 FUTURE 2-YEAR WSEL
 EURV POND WSEL
 WQCV POND WSEL
 EMERGENCY OVERFLOW PATH

COA ID: 3S6508NW001

ELEVATIONS ARE BASED ON THE CITY OF AURORA AND COUNTY OF ADAMS BENCHMARK
#356508NW001 A.B.M., 356508NW001, 2007). ON A 5" #6 REBAR, IN A 8" PVC PIPE WITH A
CAP, LOCATED SOUTHEAST OF THE SECTION CORNER TO SECTIONS 6, 5, 8, 7, TOWNSHIP 3
SOUTH, RANGE 65 WEST, SOUTHEAST OF A YELLOW STEEL CONCRETE POST, SOUTH OF
THE CENTERLINE OF A DIRT ROAD (64TH AVENUE) AND EAST OF THE INTERSECTION OF E-470 AND
64TH AVENUE.

ELEVATION = 5394.58' (NAVD1988) DATUM.

BASIS OF BEARING

BEARINGS ARE BASED ON AN ASSUMED BEARING OF S00°33'21"E ALONG THE EASTERLY LINE OF THE SOUTHWEST QUARTER OF SECTION 7, TOWNSHIP 3 SOUTH RANGE 65 WEST OF THE 6TH P.M. BEING MONUMENTED AS A FOUND 3 1/4"ALUMINUM CAP PLS # 25379 IN RANGEBOX AT THE CENTER QUARTER CORNER AND A FOUND 2 1/2"ALUMINUM CAP PLS #28285 AT THE SOUTH QUARTER CORNER.

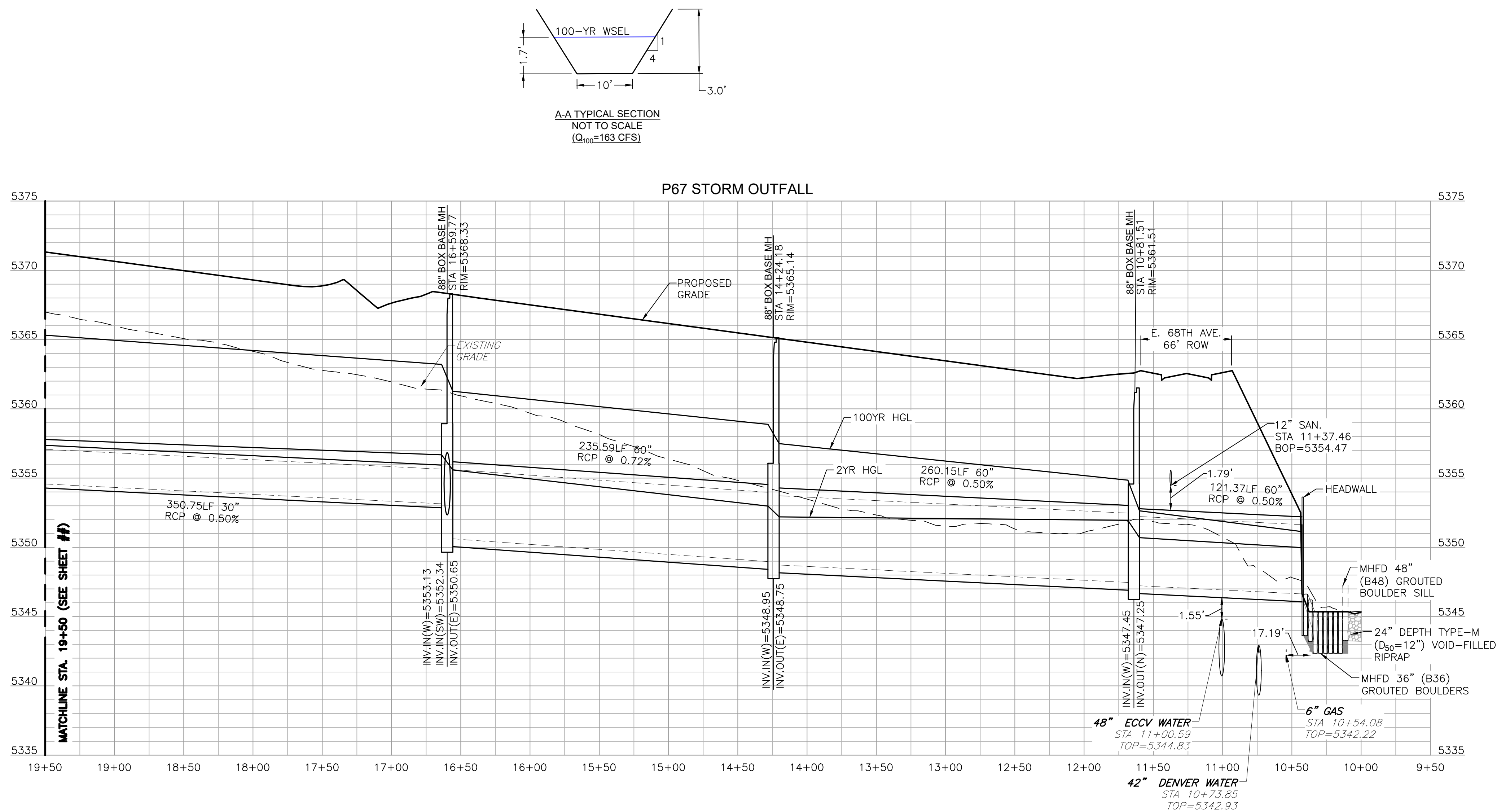
NOTES:

1. CITY OF AURORA PLAN REVIEW IS ONLY FOR GENERAL CONFORMANCE WITH CITY OF AURORA DESIGN AND THE CITY CODE. THE CITY IS NOT RESPONSIBLE FOR THE ACCURACY AND ADEQUACY OF THE DESIGN, DIMENSIONS, AND ELEVATIONS WHICH SHALL BE CONFIRMED AND CORRELATED AT THE JOB SITE. THE CITY OF AURORA, THROUGH THE APPROVAL OF THIS DOCUMENT, ASSUMES NO RESPONSIBILITY FOR THE COMPLETENESS AND/OR ACCURACY OF THIS DOCUMENT.
2. DESIGN RECURRENCE INTERVAL FOR REGIONAL CHANNEL AND STORM SEWER INFRASTRUCTURE INCLUDED IN THESE PLANS IS FOR A 100-YEAR STORM EVENT.
3. DANDELION DRAW WSEL SHOWN ON THESE PLANS WILL BE PUBLICLY OWNED AND MAINTAINED.
4. EFFECTIVE FIRM PANELS FOR THE STUDY REACH INCLUDE 08001C0665J, 08005C0054L, AND 08005C0062L ADAMS COUNTY, COLORADO AND INCORPORATED AREAS, EFFECTIVE FEBRUARY 17, 2017.
5. FUTURE DEVELOPMENTS WILL BE REQUIRED TO PROVIDE A PATH AND A DRAINAGE EASEMENT IS RECOMMENDED FOR EMERGENCY FLOWS CONVEYED FROM PROPOSED SUMP INLETS AND PROPOSED WATER QUALITY DETENTION PONDS.
6. THE APPROVED MDR (EDN#220143) REFERENCES A TYPICAL RIFFLE POOL SYSTEM. ULTIMATE DESIGN SLOPES WILL VARY FROM APPROVED MDR AND THIS PRELIMINARY DRAINAGE REPORT.
7. FUTURE 68TH AVENUE IMPROVEMENTS (RSN #1549307) ARE BEING COMPLETED UNDER SEPARATE ISP/PDR SUBMITTAL. A PRE-APPLICATION MEETING HAS BEEN COMPLETED FOR THESE IMPROVEMENTS AND THE ISP/PDR IS CURRENTLY IN PROGRESS. 68TH AVENUE ROADWAY GRADES TO BE CONSTRUCTED TO APPROXIMATE FINAL ROADWAY GRADES WHILE AVOIDING CONCENTRATED FLOW PATHS ALONG ROADWAY ALIGNMENT.
8. PROPOSED GRADING IS PRELIMINARY AND SUBJECT TO CHANGE DURING THE DESIGN REVIEW PROCESS.
9. THE DANDELION DRAW DRAINAGE TRACT AND STORM SEWER OUTFALL HAVE BEEN DESIGNED TO CONVEY THE 100-YEAR STORM EVENT AND WILL BE PUBLICLY OWNED AND MAINTAINED BY THE CITY OF AURORA.
10. MARTIN/MARTIN HAS COORDINATED WITH DEN, ADCO, MHFD, AND COA. THE OUTFALL WILL BE MAINTENANCE ELIGIBLE AND MAINTAINED BY CITY OF AURORA. MARTIN/MARTIN IS COORDINATING WITH DEN AND ADCO FOR PERMISSION TO CONSTRUCT THE IMPROVEMENTS.



CALL **811** 2-BUSINESS DAYS IN ADVANCE
BEFORE YOU DIG, GRADE OR EXCAVATE FOR
MARKING OF UNDERGROUND MEMBER UTILITIES

MARTIN/MARTIN ASSUMES NO RESPONSIBILITY FOR UTILITY
LOCATIONS. THIS CONTRACTOR'S DRAWINGS HAVE BEEN
PLOTTED FROM (PROVIDED) SHEET (38) UTILITY QUALITY LEVEL D
(Q_{40}) AVAILABLE INFORMATION. IT IS, HOWEVER, THE CONTRACTORS
RESPONSIBILITY TO FIELD VERIFY THE SIZE, MATERIAL, HORIZONTAL
AND VERTICAL LOCATION OF ALL UTILITIES (DEPICTED OR NOT
DEPICTED) PRIOR TO THE COMMENCEMENT OF ANY CONSTRUCTION.



DANDELION DRAW

PRELIMINARY DRAINAGE REPORT

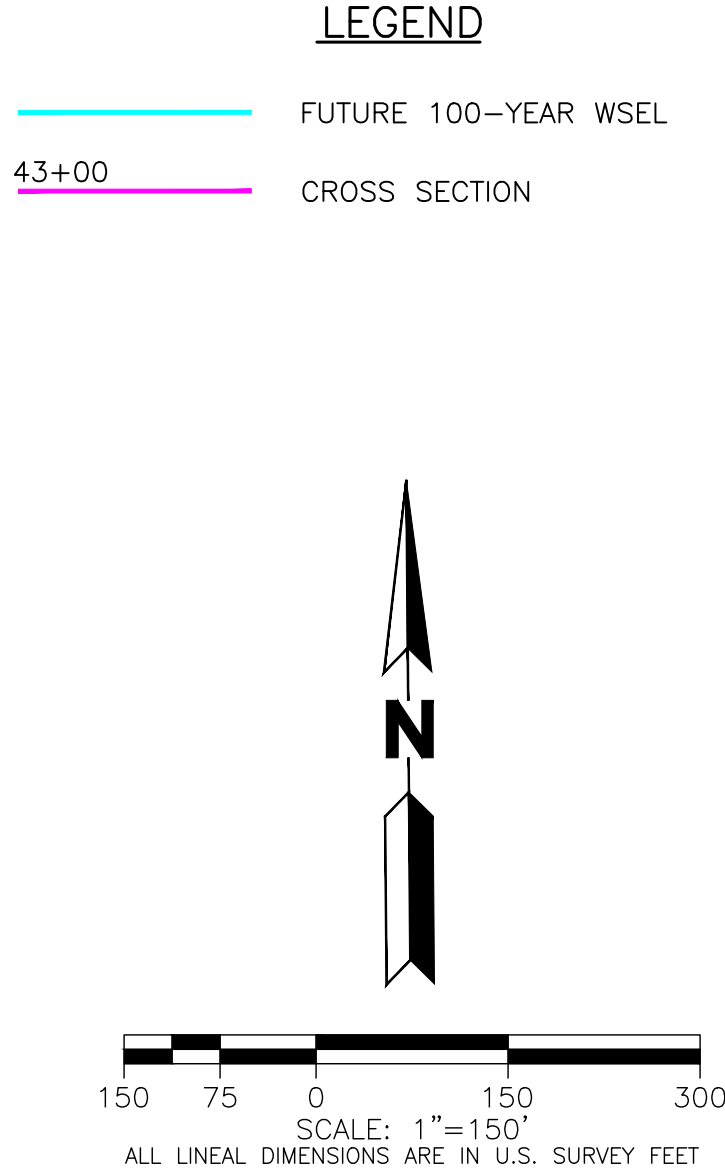
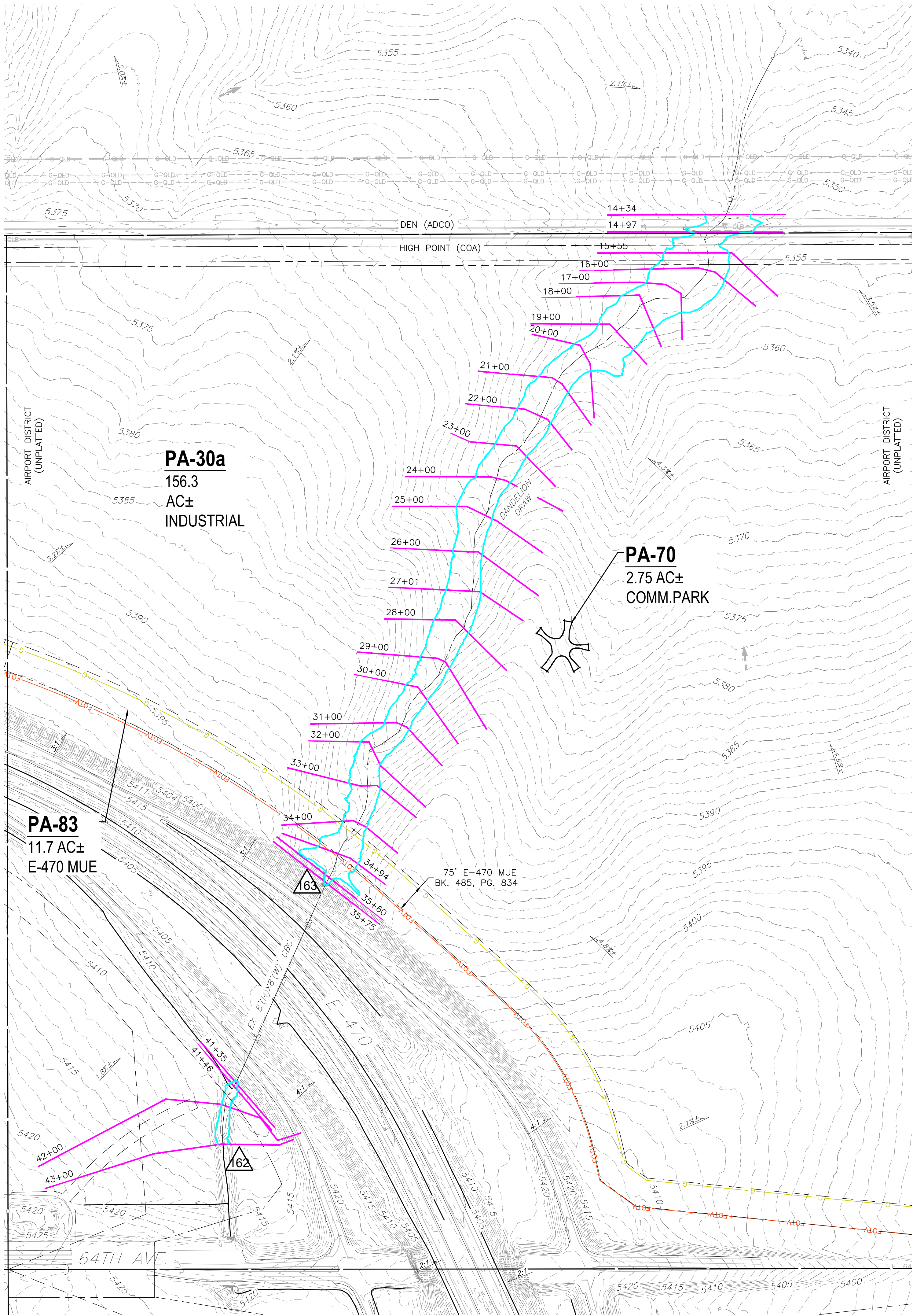
68TH AVE PLAN & PROFILE

[illegible]

Job Number	19.1043 C19
Project Manager	R. BYRNE
Design By	R. BYRNE
Drawn By	G. KIRALY
Principal In Charge	P. HORN

Sheet Number:

D6



CROSS SECTION	100-YR EXISTING WSEL	100-YR FUTURE WSEL
43+00	5407.97	5408.79
42+00	5405.50	5406.36
41+46	5403.50	5406.24
41+35	5402.25	5404.62
35+75	5391.02	5393.55
35+60	5389.31	5390.57
34+94	5387.40	5388.00
34+00	5385.48	5386.18
33+00	5383.26	5383.94
32+00	5381.22	5381.81
31+00	5379.18	5379.88
30+00	5377.39	5378.04
29+00	5375.66	5376.30
28+00	5373.56	5374.09
27+01	5371.31	5371.88
26+00	5368.88	5369.56
25+00	5366.39	5366.91
24+00	5363.91	5364.46
23+00	5361.98	5362.55
22+00	5360.11	5360.73
21+00	5358.71	5359.32
20+00	5357.08	5357.69
19+00	5355.31	5355.88
18+00	5354.22	5354.71
17+00	5353.07	5353.60
16+00	5352.52	5353.06
15+55	5351.67	5352.08
14+97	5350.39	5350.79
14+34	5348.25	5348.65

DESIGN POINT	100-YR EXISTING FLOW (CFS)	100-YR FUTURE FLOW (CFS)
162	141	335
163	272	636

*FLOWS FROM 2020 MDP, EDN #220091

BENCHMARK

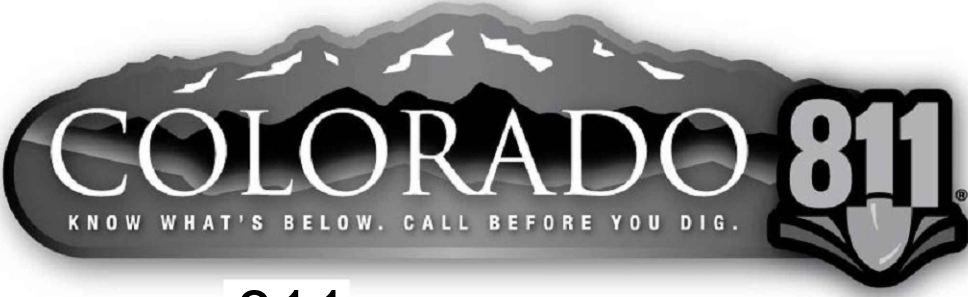
COA ID: 3S6508NW001

ELEVATIONS ARE BASED ON THE CITY OF AURORA AND COUNTY OF ADAMS BENCHMARK #3S6508NW001 A CITY OF AURORA AND COUNTY OF ADAMS 3-1/4" ALUMINUM CAP STAMPED (CITY OF AURORA B.M., 3S6508NW001, 2007). ON A 5' #6 REBAR, IN A 8" PVC PIPE WITH A CAP, LOCATED SOUTHEAST OF THE SECTION CORNER TO SECTIONS 6, 5, 8, 7, TOWNSHIP 3 SOUTH, RANGE 65 WEST, SOUTHEAST OF A YELLOW STEEL CONCRETE POST, SOUTH OF THE CENTERLINE OF A DIRT ROAD (64TH AVENUE) AND EAST OF THE INTERSECTION OF E-470 AND 64TH AVENUE.

ELEVATION = 5394.58' (NAVD1988) DATUM.

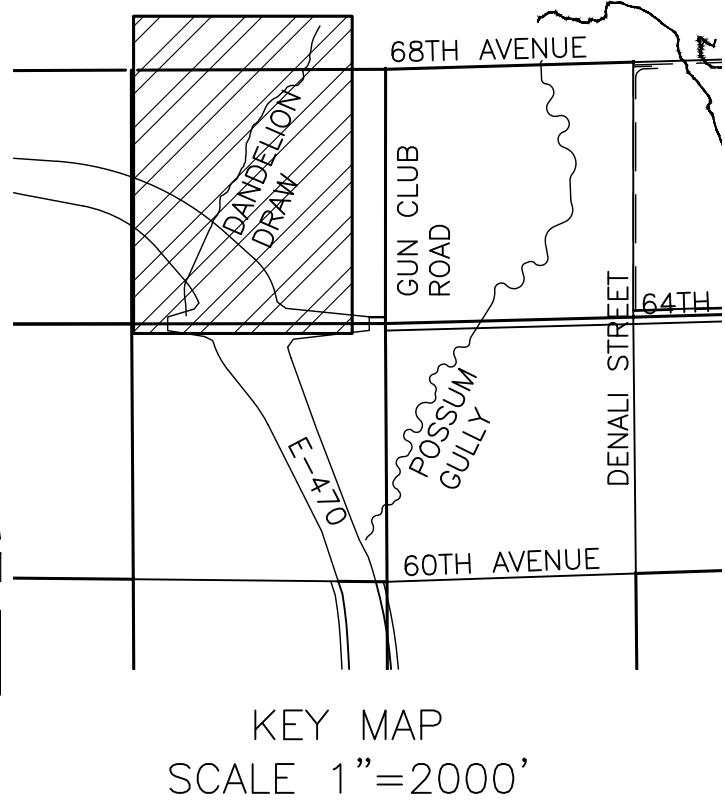
BASIS OF BEARING

BEARINGS ARE BASED ON AN ASSUMED BEARING OF S00°33'21"E ALONG THE EASTERLY LINE OF THE SOUTHWEST QUARTER OF SECTION 7, TOWNSHIP 3 SOUTH RANGE 65 WEST OF THE 6TH P.M. BEING MONUMENTED AS A FOUND 3 1/4"ALUMINUM CAP PLS # 25379 IN RANGEBOX AT THE CENTER QUARTER CORNER AND A FOUND 2 1/2"ALUMINUM CAP PLS #28285 AT THE SOUTH QUARTER CORNER.



CALL 811 2-BUSINESS DAYS IN ADVANCE BEFORE YOU DIG, GRADE OR EXCAVATE FOR MARKING OF UNDERGROUND MEMBER UTILITIES

MARTIN/MARTIN ASSUMES NO RESPONSIBILITY FOR UTILITY LOCATIONS. UNLESS OTHERWISE NOTED, THE UTILITIES SHOWN ON THIS DRAWING ARE BASED ON INFORMATION PROVIDED BY OTHERS AND DEPICTED AS ASCE (38) QUALITY LEVEL D. IN ACCORDANCE WITH THE PROVISIONS OF COLORADO REVISED STATUTE, TITLE 9, IT IS THE CONTRACTORS RESPONSIBILITY TO CALL COLORADO 811 UTILITY LOCATE SERVICE FOR UTILITY LOCATES BEFORE DIGGING, AND FIELD VERIFY THE SIZE, MATERIAL, HORIZONTAL AND VERTICAL LOCATION OF ALL EXISTING UTILITIES (DEPICTED OR NOT DEPICTED) PRIOR TO THE COMMENCEMENT OF ANY CONSTRUCTION.



DANDELION DRAW

PRELIMINARY DRAINAGE REPORT

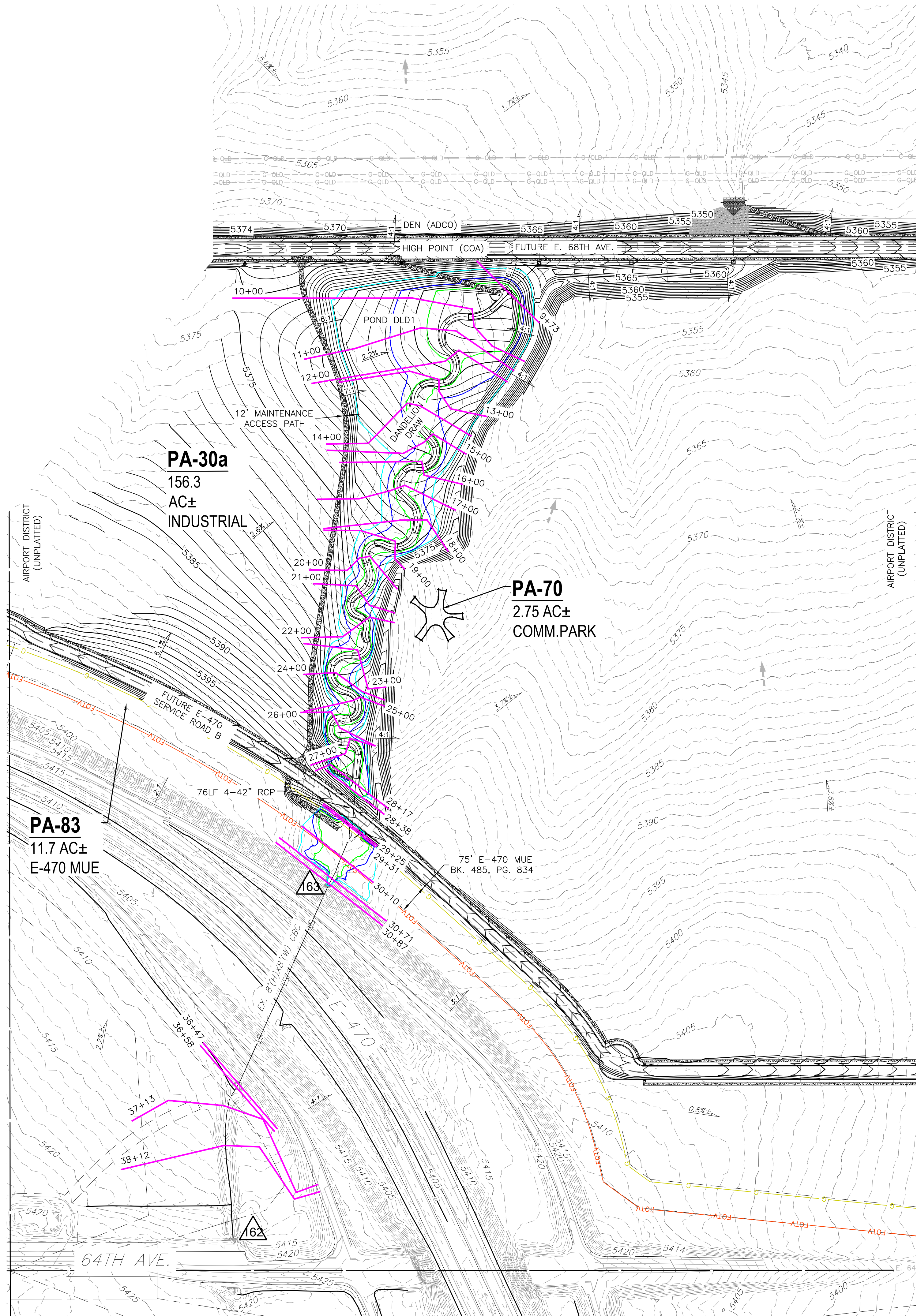
EXISTING CONDITIONS WORKMAP

No.	Issue / Revision	Date	Name
1	ISSUED FOR COA REVIEW	02/25/22	M/W
2	ISSUED FOR COA REVIEW	07/26/22	M/W

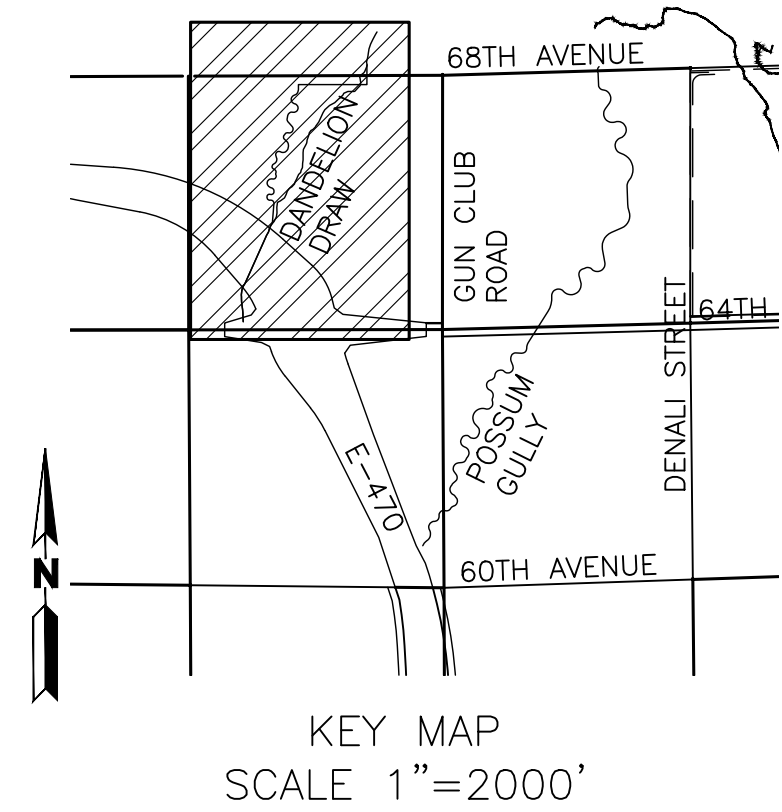
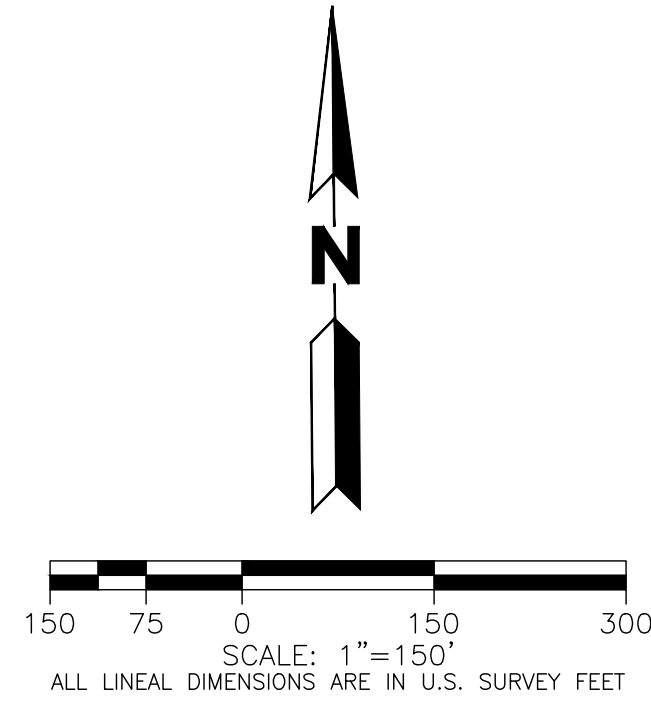
Job Number	19.1043 C19
Project Manager	R. BYRNE
Design By	R. BYRNE
Drawn By	G. KIRALY
Principal In Charge	P. HORN

Sheet Number:

D8



- LEGEND**
- FUTURE 100-YEAR WATER SURFACE ELEVATION
 - FUTURE 10-YEAR WATER SURFACE ELEVATION
 - FUTURE 2-YEAR WATER SURFACE ELEVATION
 - CROSS SECTION



CROSS SECTION	100-YR EXISTING WSEL	100-YR FUTURE WSEL
38+12	5407.97	5408.75
37+13	5405.51	5406.35
36+58	5403.48	5406.23
36+47	5402.25	5404.61
30+87	5389.87	5391.54
30+71	5388.71	5389.60
30+10	5387.21	5389.34
29+31	5387.12	5389.24
29+25	5387.01	5389.09
28+38	5386.25	5387.25
28+17	5386.05	5386.85
27+00	5384.55	5385.31
26+00	5382.96	5383.75
25+00	5381.24	5382.07
24+00	5379.59	5380.45
23+00	5378.04	5378.70
22+00	5376.31	5377.19
21+00	5374.66	5375.53
20+00	5373.01	5373.84
19+00	5371.36	5372.16
18+00	5369.74	5370.42
17+00	5367.99	5368.65
16+00	5366.49	5367.15
15+00	5366.27	5366.24
14+00	5366.28	5366.29
13+00	5366.28	5366.29
12+00	5366.28	5366.29
11+00	5366.28	5366.29
10+00	5366.28	5366.29
9+73	5366.28	5366.28

DESIGN POINT	100-YR EXISTING FLOW (CFS)	100-YR FUTURE FLOW (CFS)
162	141	335
163	272	636

*FLOWS FROM 2020 MDP, EDN #220091

BENCHMARK

COA ID: 3S6508NW001

ELEVATIONS ARE BASED ON THE CITY OF AURORA AND COUNTY OF ADAMS BENCHMARK #3S6508NW001 A CITY OF AURORA AND COUNTY OF ADAMS 3-1/4" ALUMINUM CAP STAMPED (CITY OF AURORA B.M., 3S6508NW001, 2007), ON A 5' #6 REBAR, IN A 8" PVC PIPE WITH A CAP, LOCATED SOUTHEAST OF THE SECTION CORNER TO SECTIONS 6, 5, 8, 7, TOWNSHIP 3 SOUTH, RANGE 65 WEST, SOUTHEAST OF A YELLOW STEEL CONCRETE POST, SOUTH OF THE CENTERLINE OF A DIRT ROAD (64TH AVENUE) AND EAST OF THE INTERSECTION OF E-470 AND 64TH AVENUE.

ELEVATION = 5394.58' (NAVD1988) DATUM.

BEARING OF BEARING

BEARINGS ARE BASED ON AN ASSUMED BEARING OF S00°33'21"E ALONG THE EASTERLY LINE OF THE SOUTHWEST QUARTER OF SECTION 7, TOWNSHIP 3 SOUTH RANGE 65 WEST OF THE 6TH P.M. BEING MONUMENTED AS A FOUND 3 1/4"ALUMINUM CAP PLS # 25379 IN RANGEBOX AT THE CENTER QUARTER CORNER AND A FOUND 2 1/2"ALUMINUM CAP PLS #28285 AT THE SOUTH QUARTER CORNER.



CALL 811 2-BUSINESS DAYS IN ADVANCE BEFORE YOU DIG, GRADE OR EXCAVATE FOR MARKING OF UNDERGROUND MEMBER UTILITIES

MARTIN/MARTIN ASSUMES NO RESPONSIBILITY FOR UTILITY LOCATIONS. UNLESS OTHERWISE NOTED, THE UTILITIES SHOWN ON THIS DRAWING ARE BASED ON INFORMATION PROVIDED BY OTHERS AND DEPICTED AS ASCE (38) QUALITY LEVEL D. IN ACCORDANCE WITH THE PROVISIONS OF COLORADO REVISED STATUTE, TITLE 9, IT IS THE CONTRACTORS RESPONSIBILITY TO CALL COLORADO 811 UTILITY LOCATE SERVICE FOR UTILITY LOCATES BEFORE DIGGING, AND FIELD VERIFY THE SIZE, MATERIAL, HORIZONTAL AND VERTICAL LOCATION OF ALL EXISTING UTILITIES (DEPICTED OR NOT DEPICTED) PRIOR TO THE COMMENCEMENT OF ANY CONSTRUCTION.

DANDELION DRAW

PRELIMINARY DRAINAGE REPORT

PROPOSED CONDITIONS WORKMAP

No.	Issue / Revision	Date	Name
1	ISSUED FOR COA REVIEW	02/25/22	M/W
2	ISSUED FOR COA REVIEW	07/26/22	M/W

Job Number	19.1043 C19
Project Manager	R. BYRNE
Design By	R. BYRNE
Drawn By	G. KIRALY
Principal In Charge	P. HORN

Sheet Number:

D9